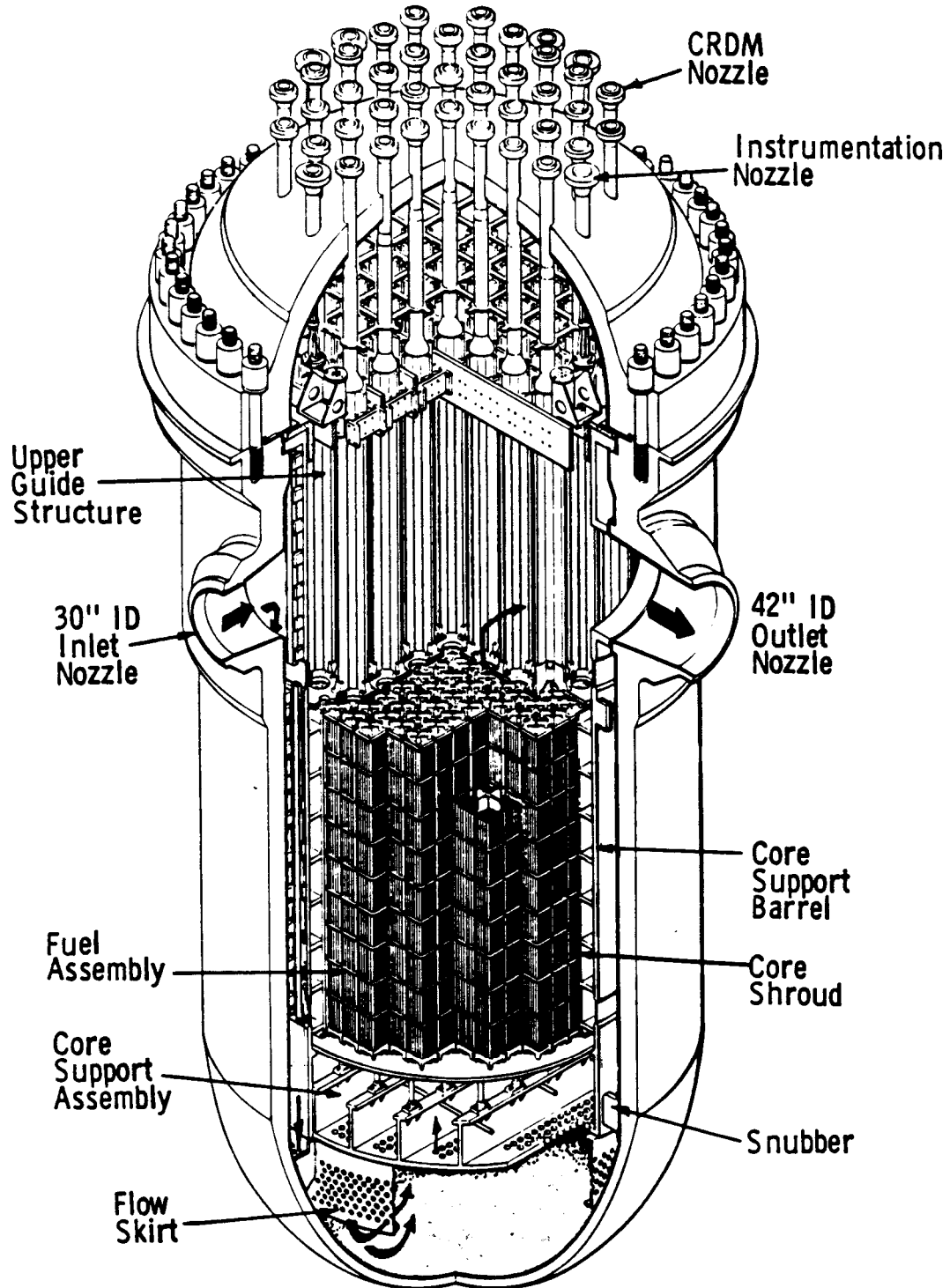
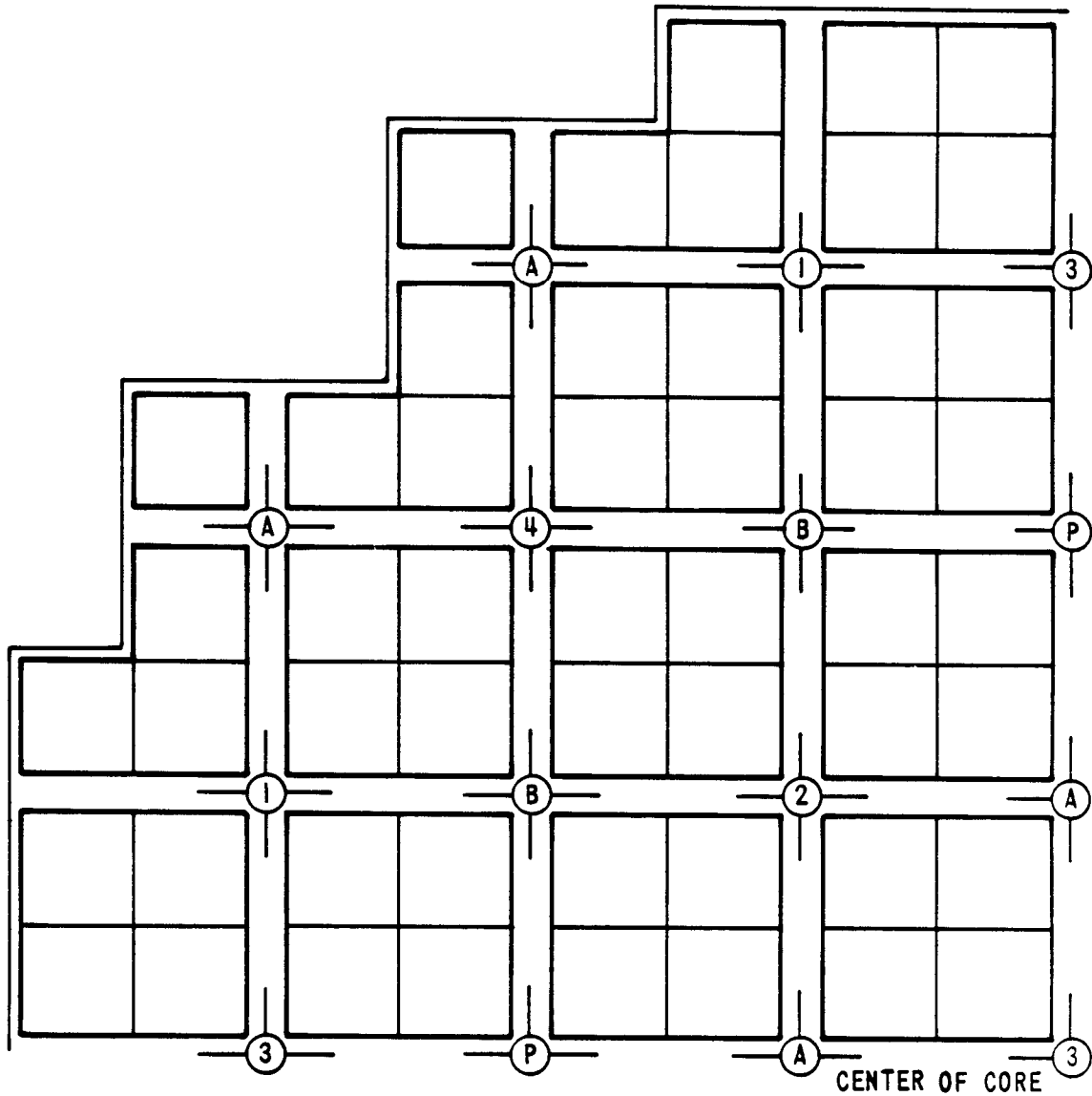


REACTOR

ARRANGEMENT



POSITION OF FUEL ASSEMBLIES AND  
CONTROL ROD GROUPS IN THE PALISADES CORE

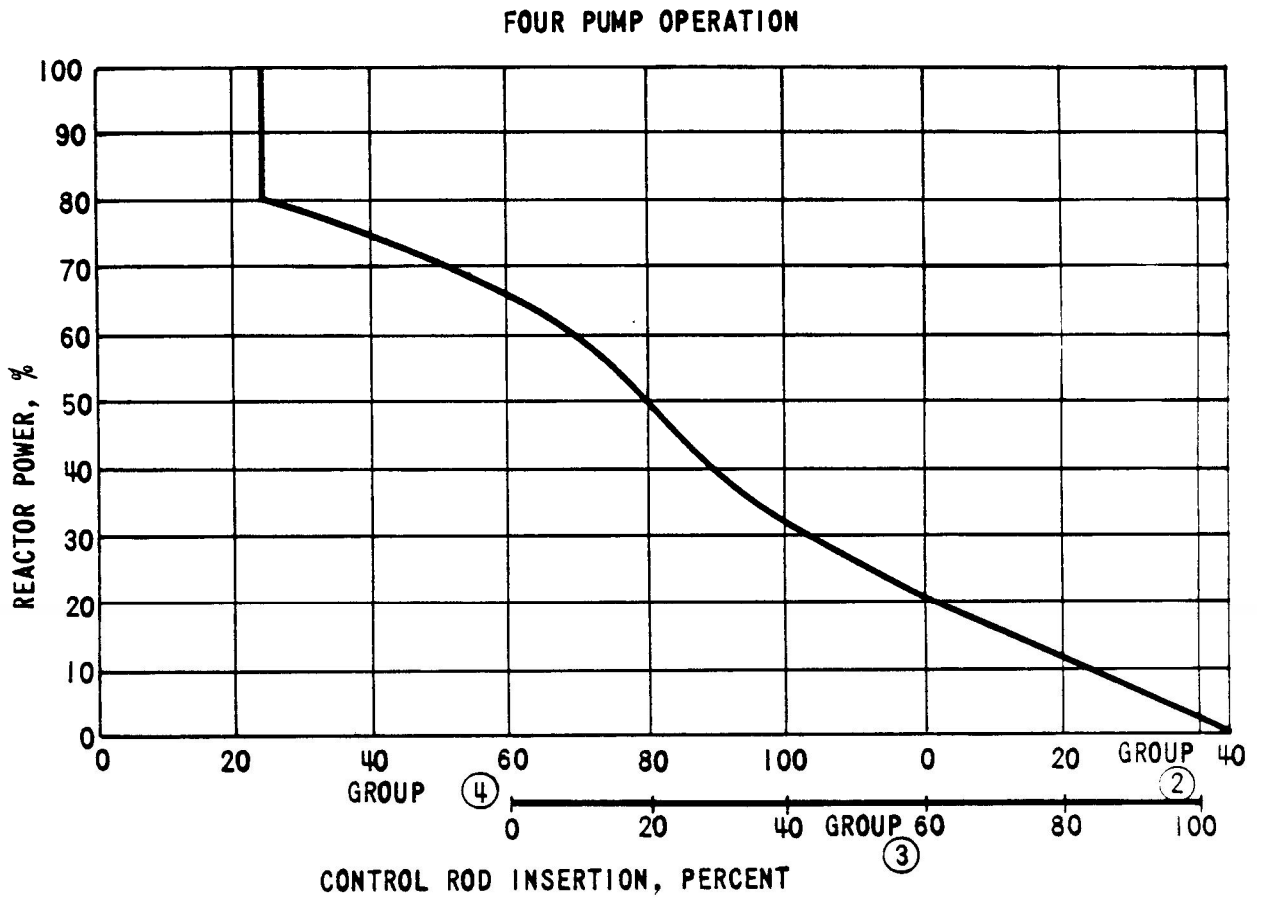


LEGEND

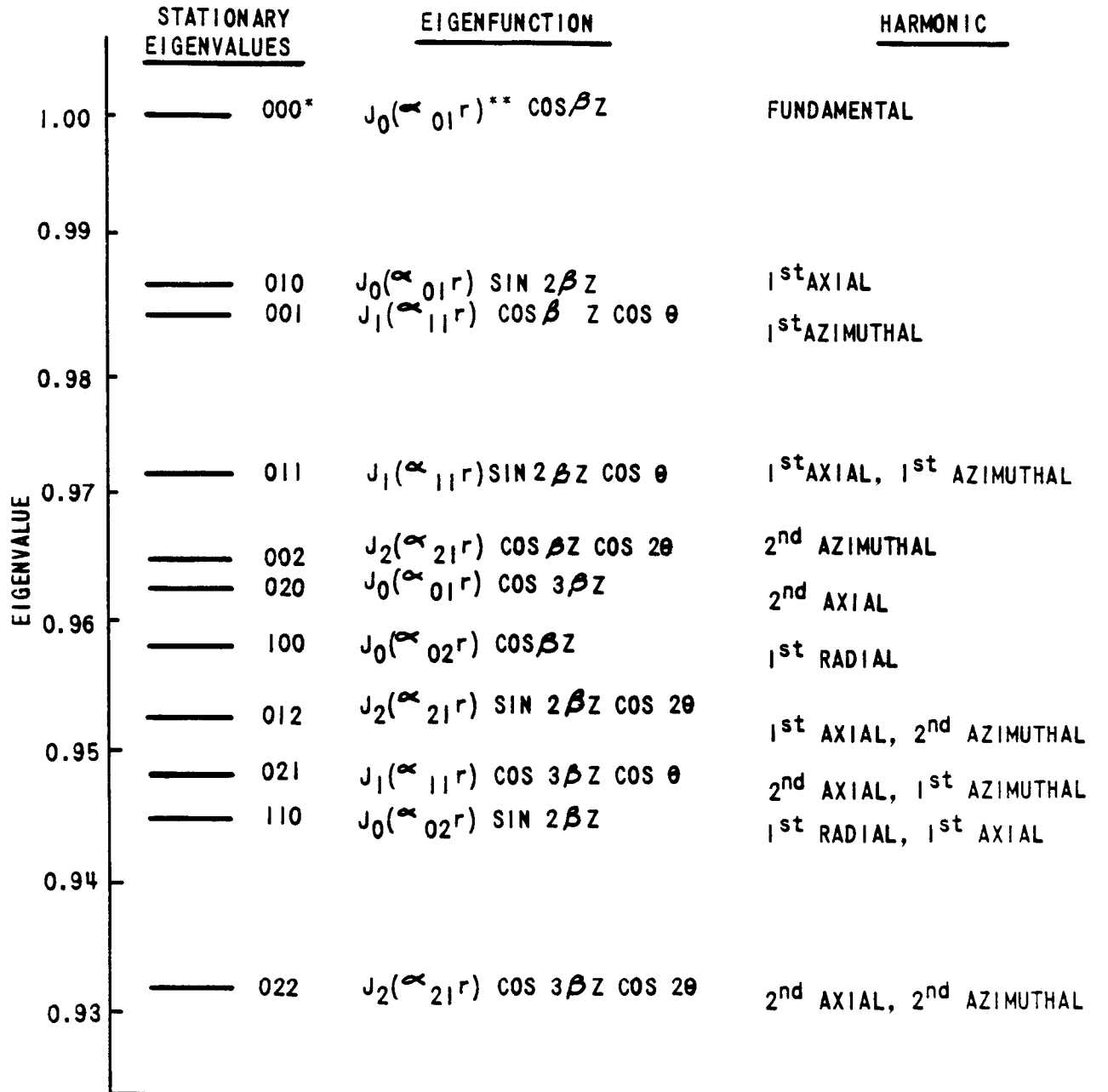
CONTROL ROD GROUPS

- ① ② ③ ④ REGULATING
- Ⓐ Ⓑ SHUT DOWN
- Ⓟ PART LENGTH

CONTROL ROD INSERTION LIMITS



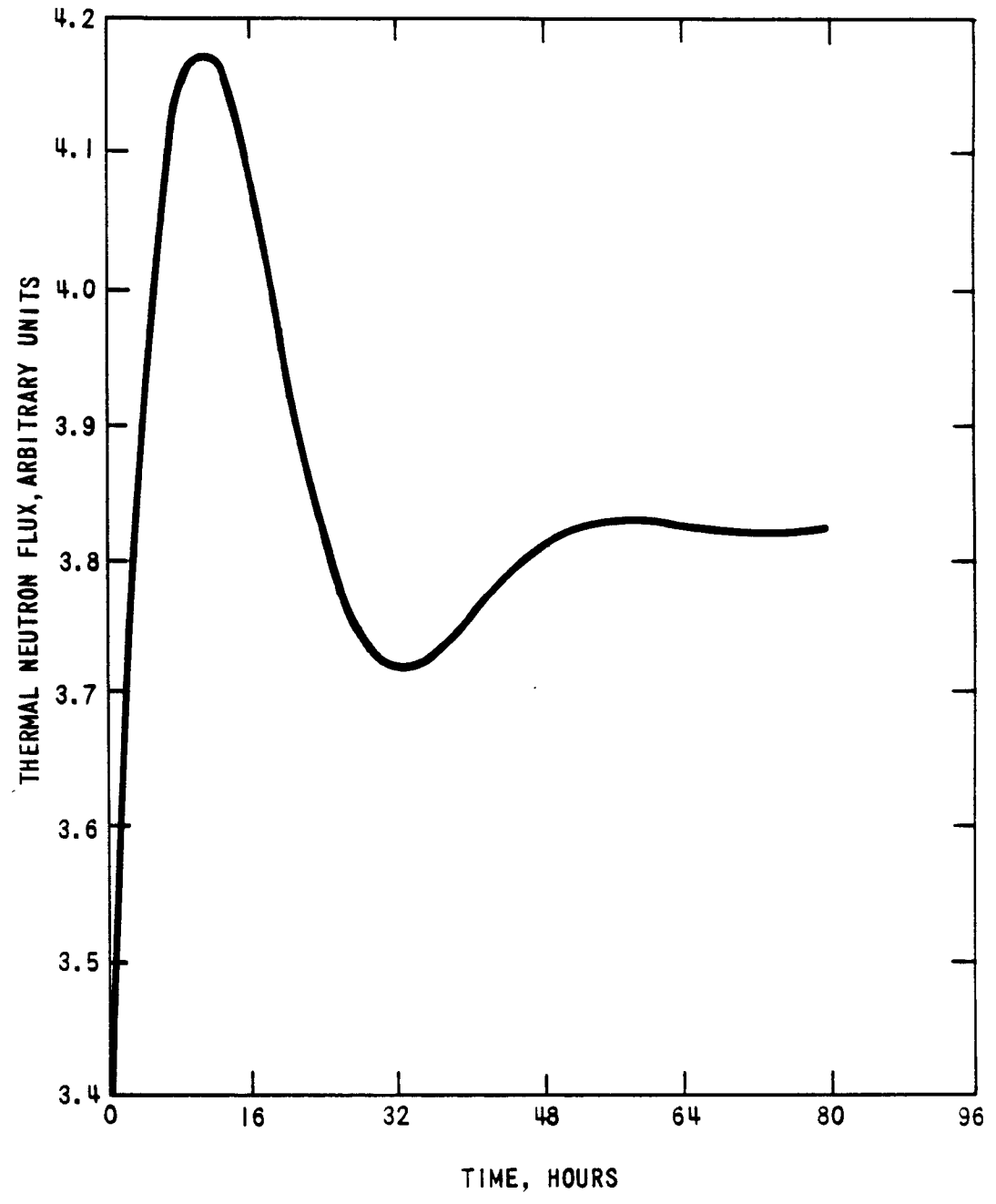
REACTIVITY DIFFERENCE BETWEEN FUNDAMENTAL AND  
EXCITED STATES OF A BARE CYLINDRICAL REACTOR



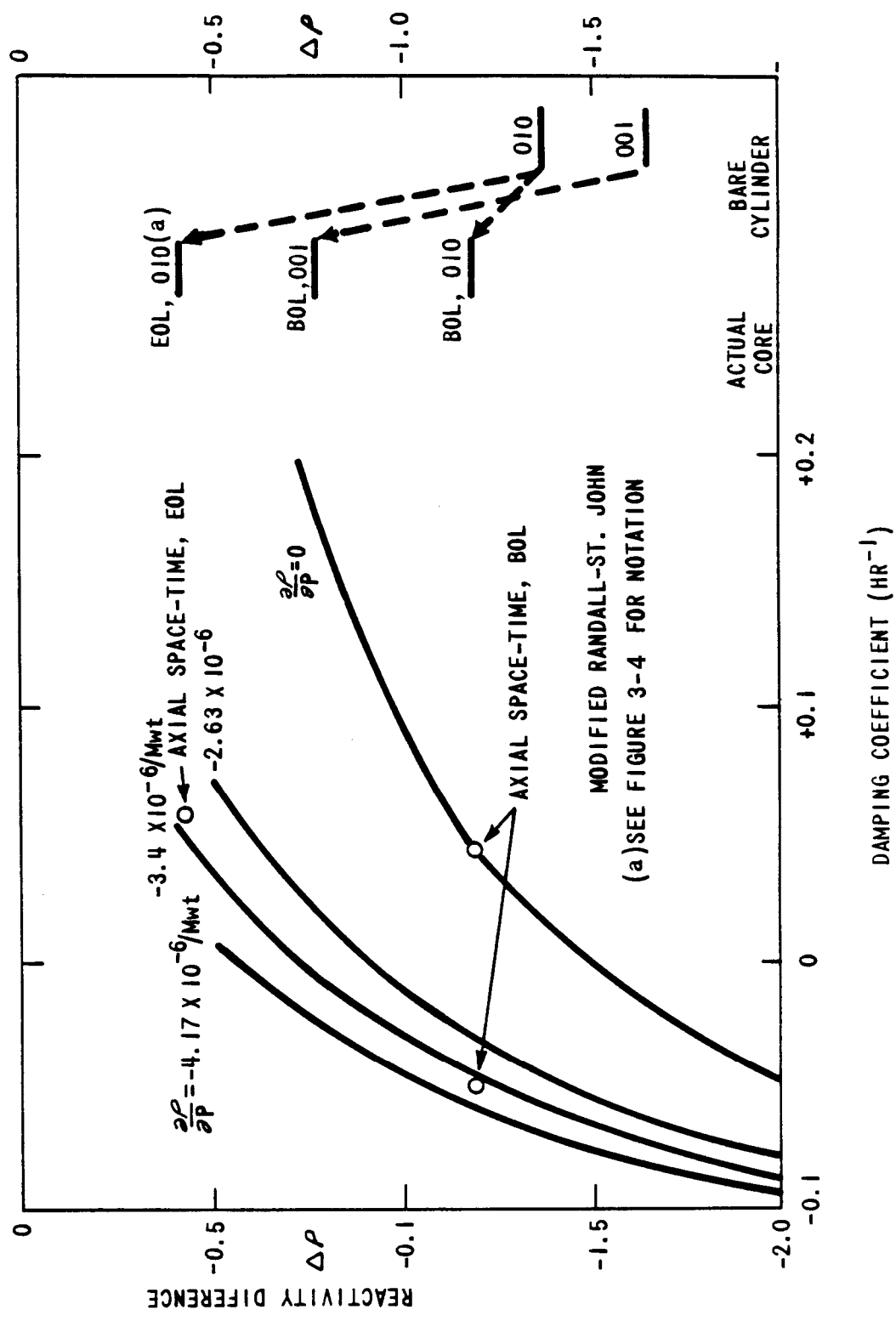
\* THE INDICES INDICATE RADIAL, AXIAL AND AZIMUTHAL COMPONENTS OF THE SEPARABLE MODES IN THAT ORDER

\*\*  $\alpha_{ij}$  INDICATES THE  $j^{\text{th}}$  ZERO OF THE  $i^{\text{th}}$  BESSEL FUNCTION

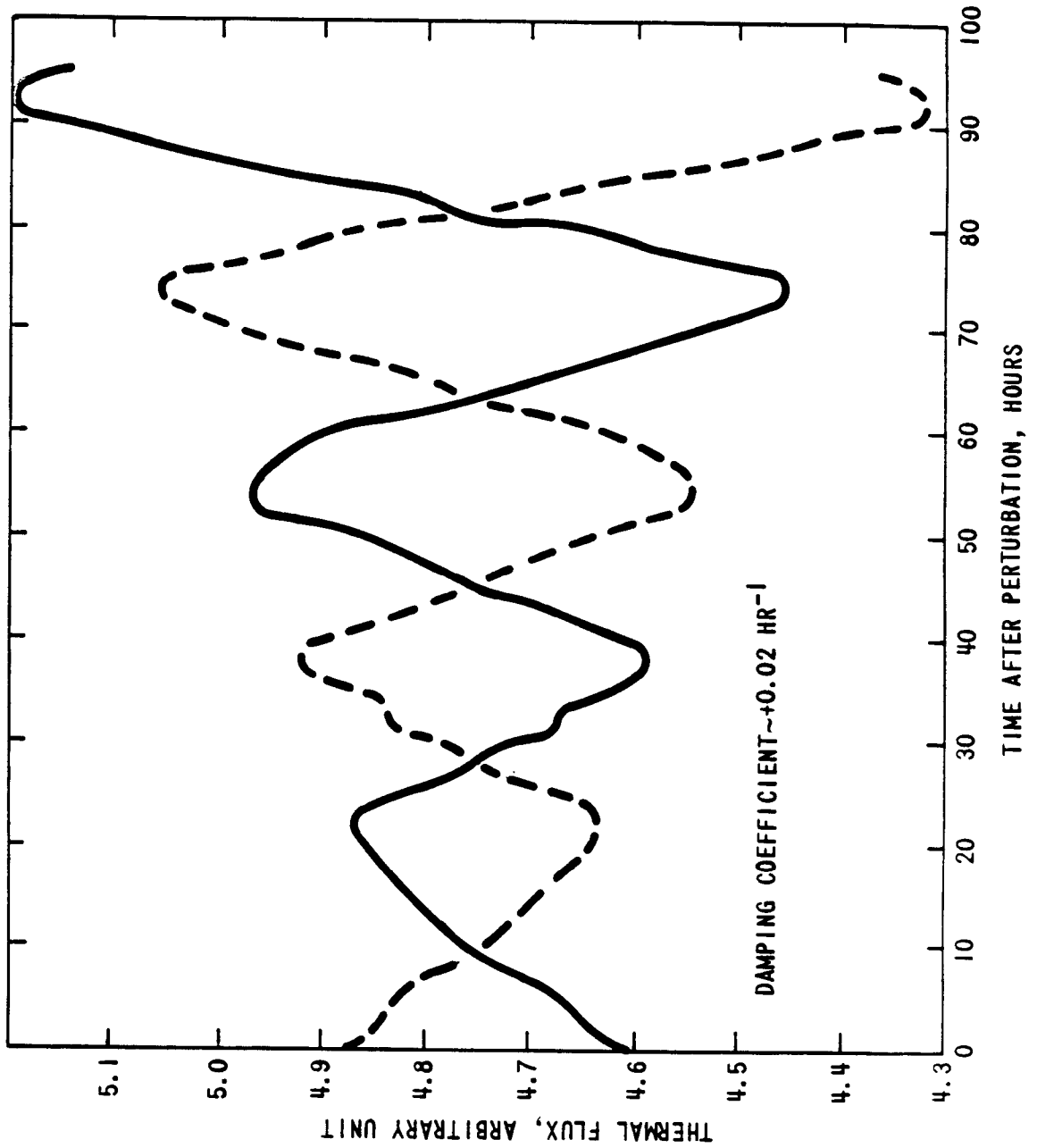
THERMAL NEUTRON FLUX AT THE CENTER OF THE CORE VS TIME



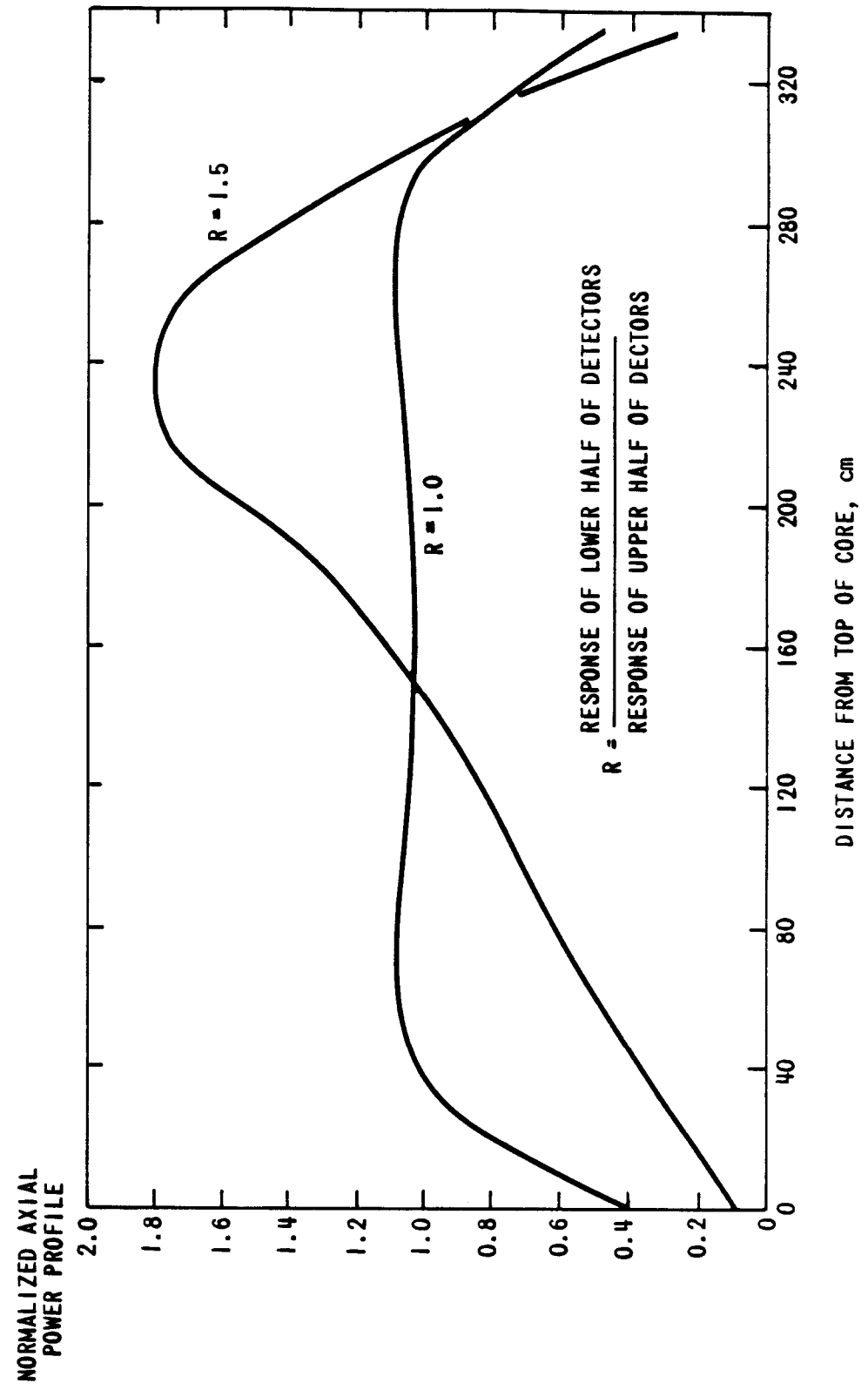
DAMPING COEFFICIENT VS REACTIVITY DIFFERENCE BETWEEN  
FUNDAMENTAL AND EXCITED STATE



END OF LIFE AXIAL OSCILLATIONS WITH DOPPLER FEEDBACK,  
FULL POWER (2-HOUR TIME STEPS)

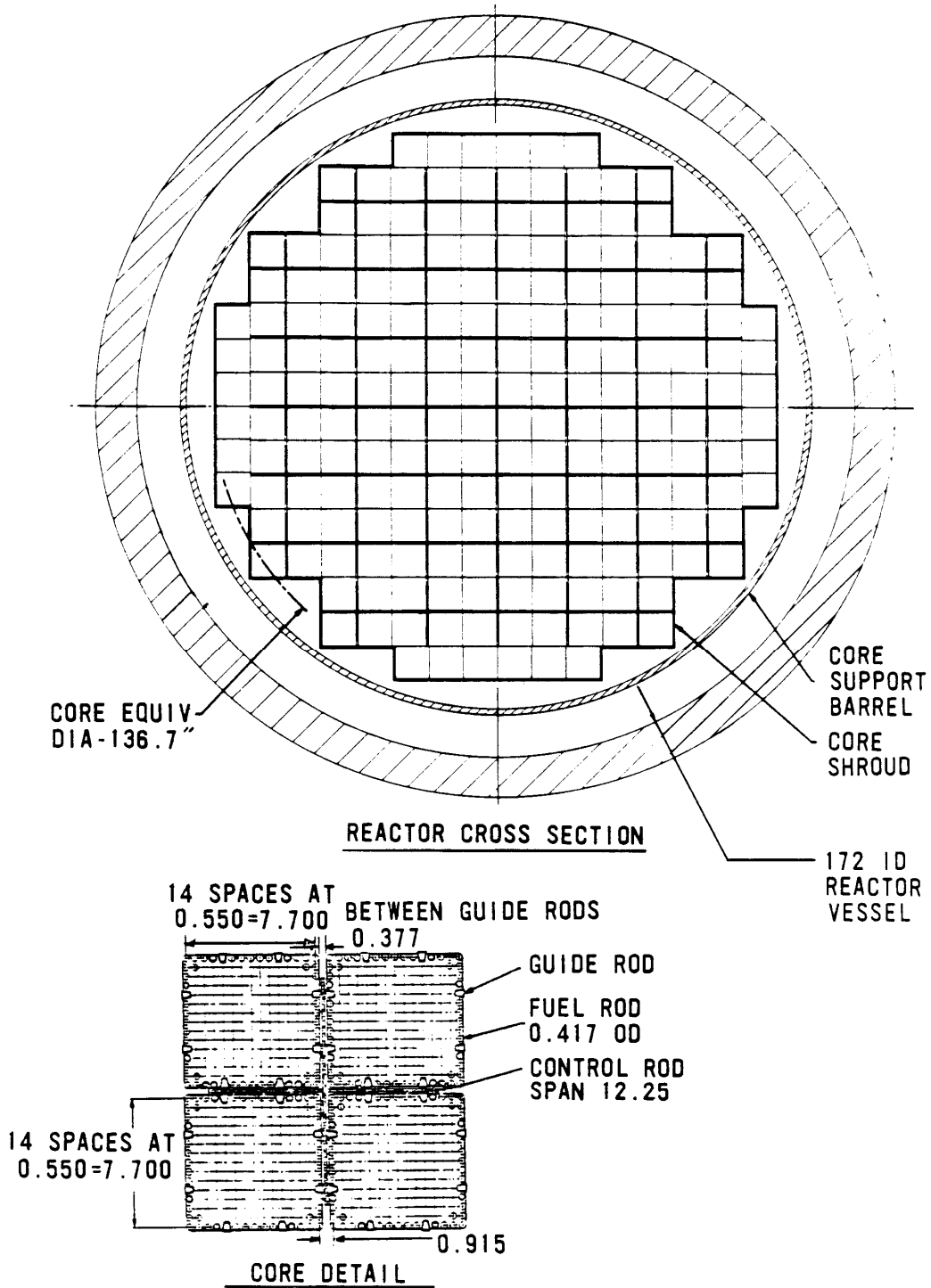


SPLIT DETECTOR RESPONSE TO AXIAL POWER PROFILES IN THE CORE

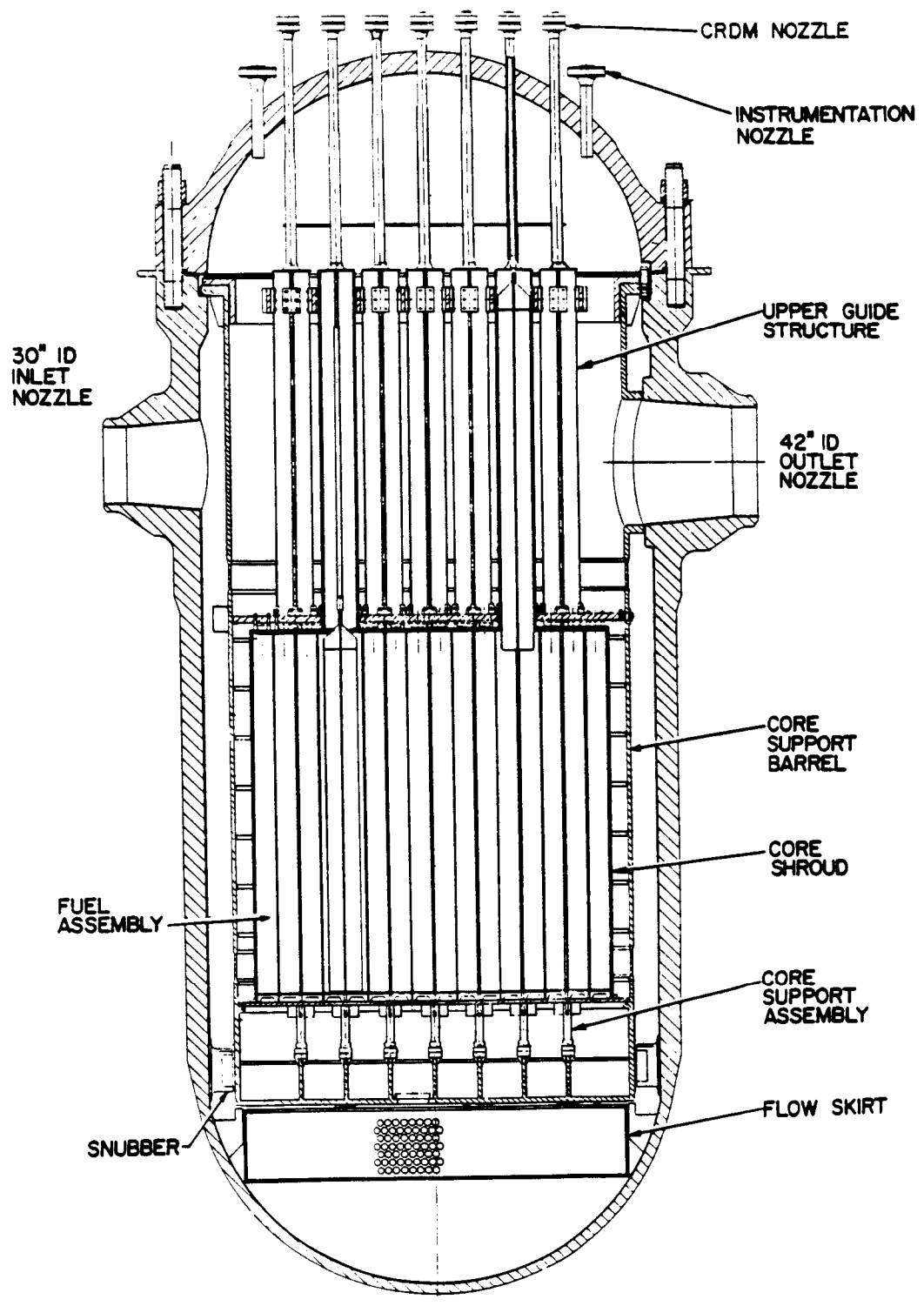




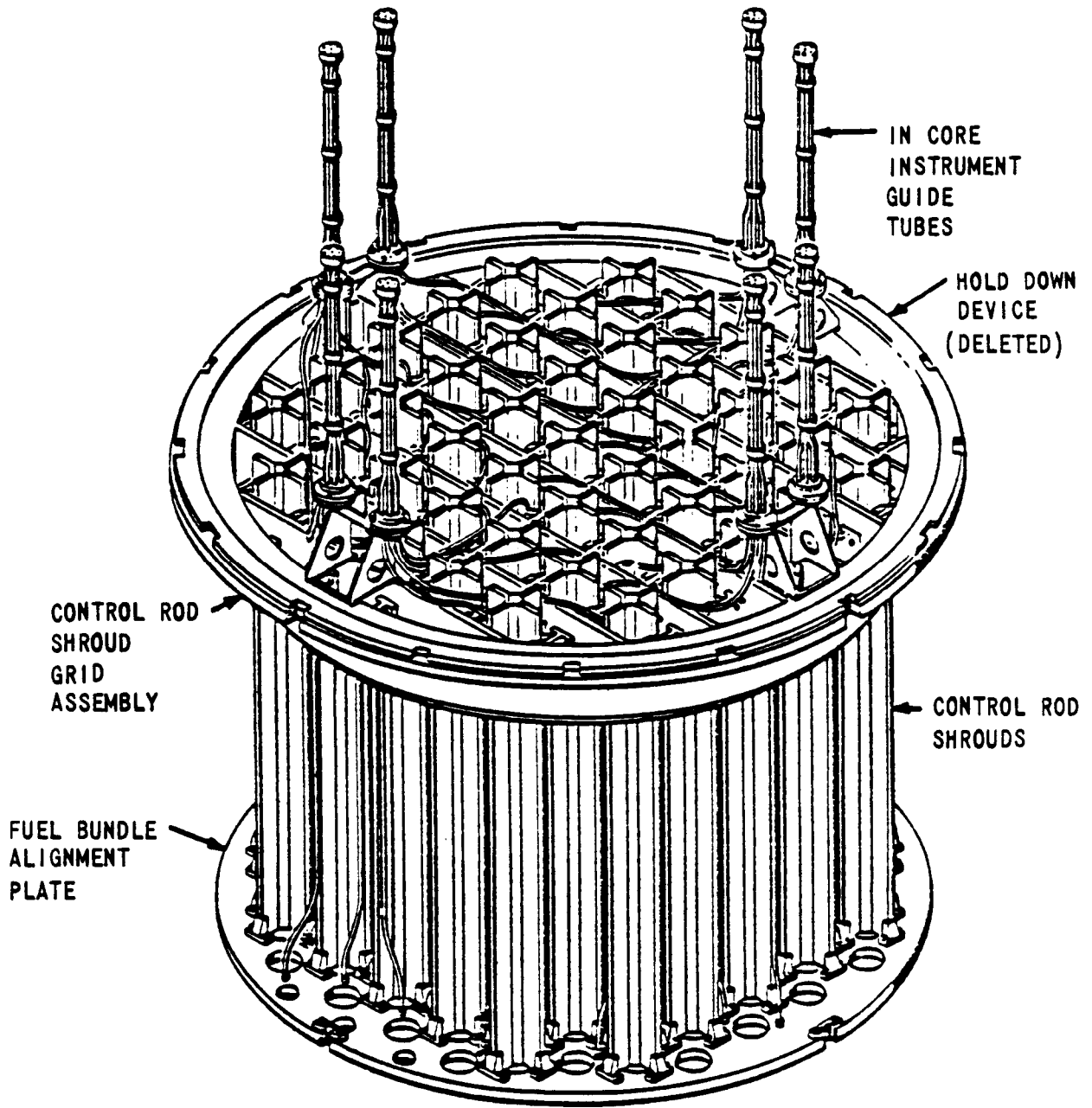
REACTOR CORE CROSS SECTION



REACTOR ARRANGEMENT

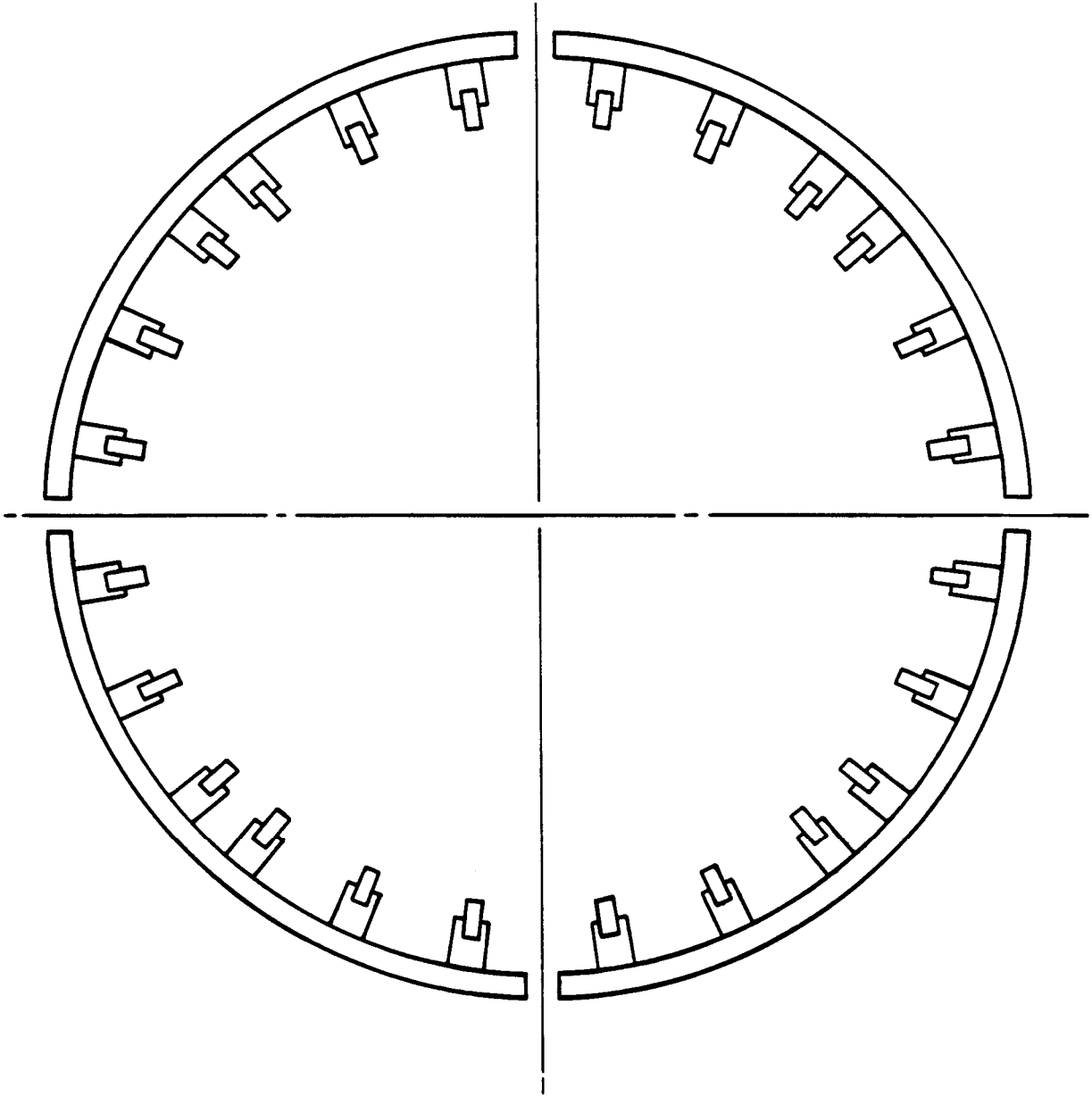


UPPER GUIDE STRUCTURE ASSEMBLY

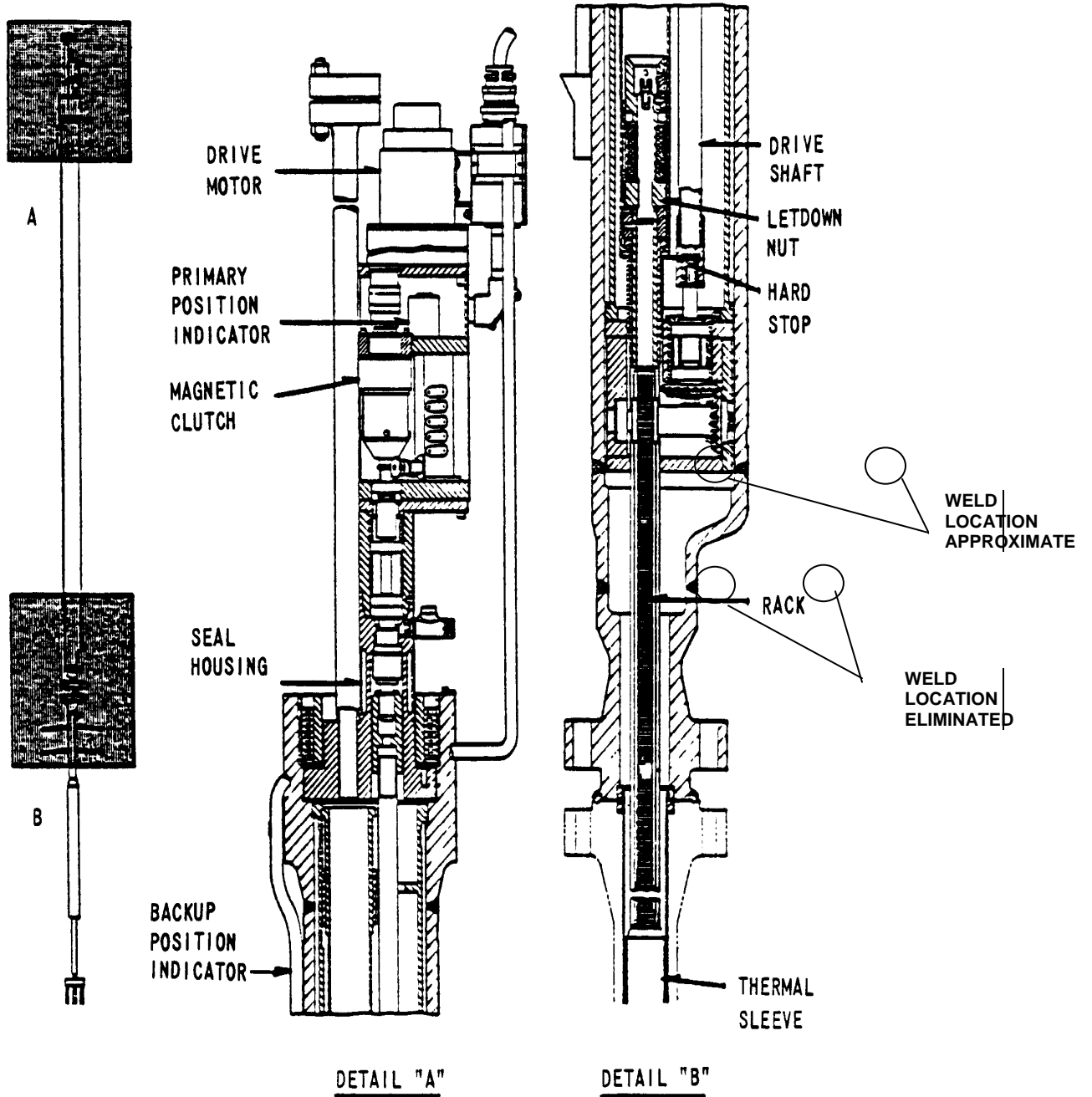


---

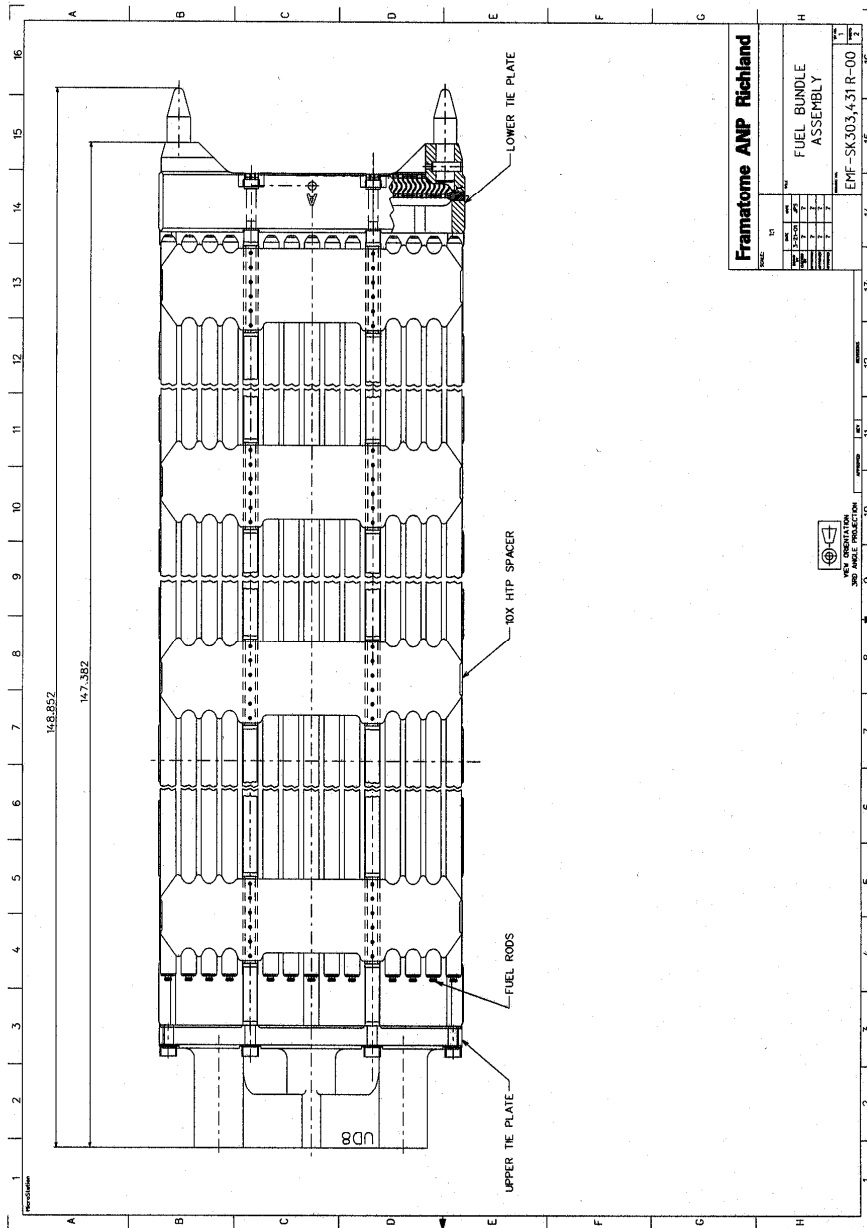
HOLD DOWN RING



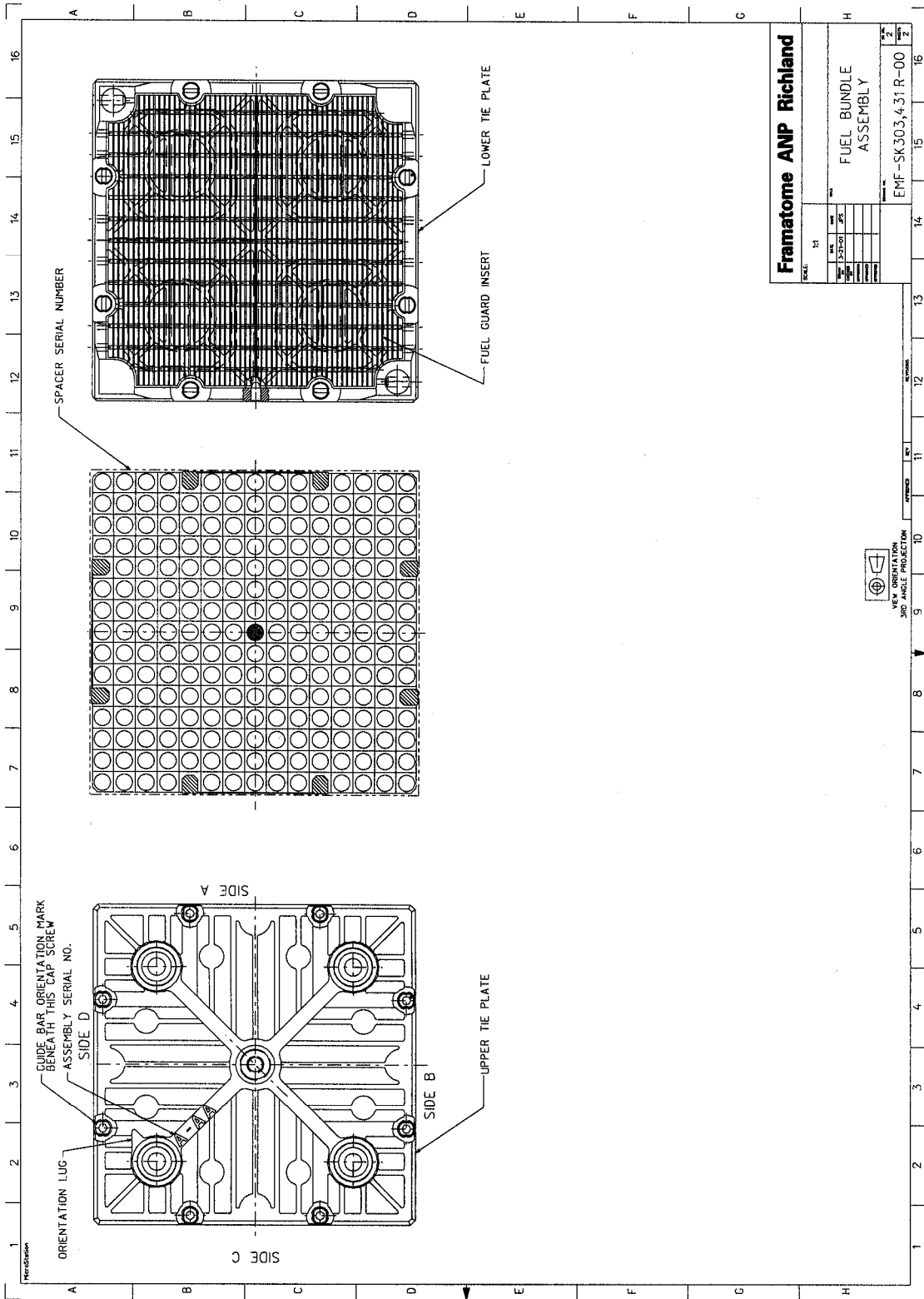
CONTROL ROD DRIVE MECHANISM



FUEL BUNDLE ASSEMBLY  
Sheet 1 of 2



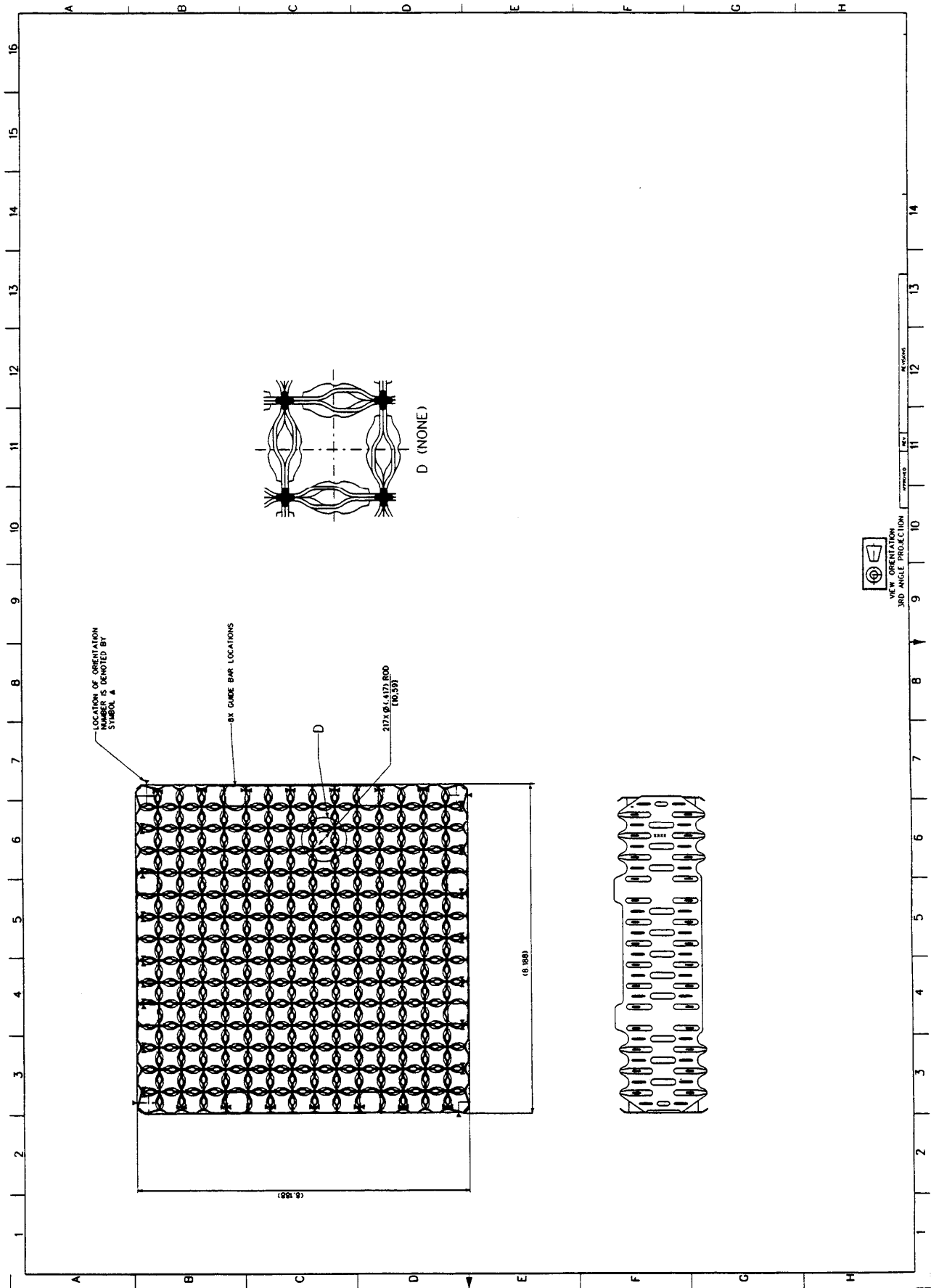
FUEL BUNDLE ASSEMBLY  
Sheet 2 of 2



<b>Framatome ANP Richland</b>	
SIZE: N1	
REV	DATE
1	8-27-81
2	
3	
4	
5	
6	
7	
8	
9	
10	
11	
12	
13	
14	
15	
16	
FUEL BUNDLE ASSEMBLY	
EMF-SK303,431 R-00	
17	
18	

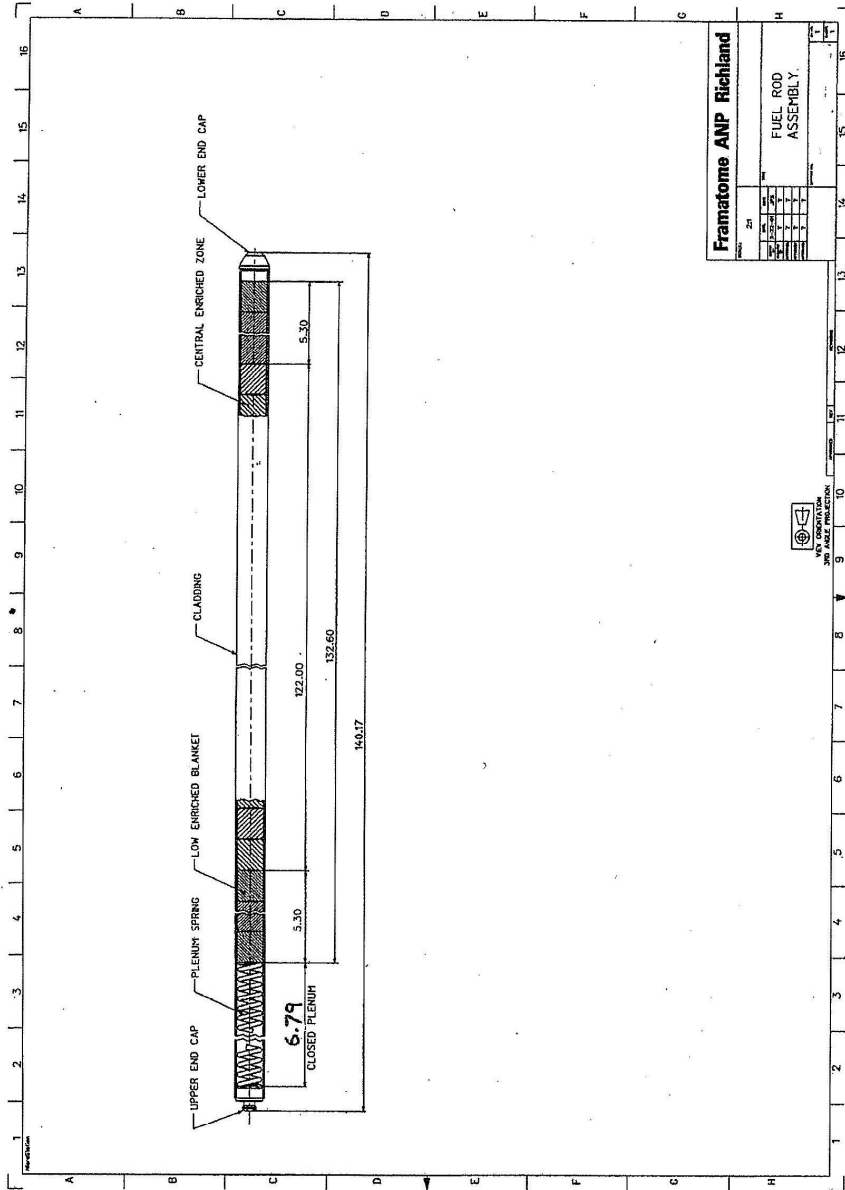


SPACER ASSEMBLY  
HTP

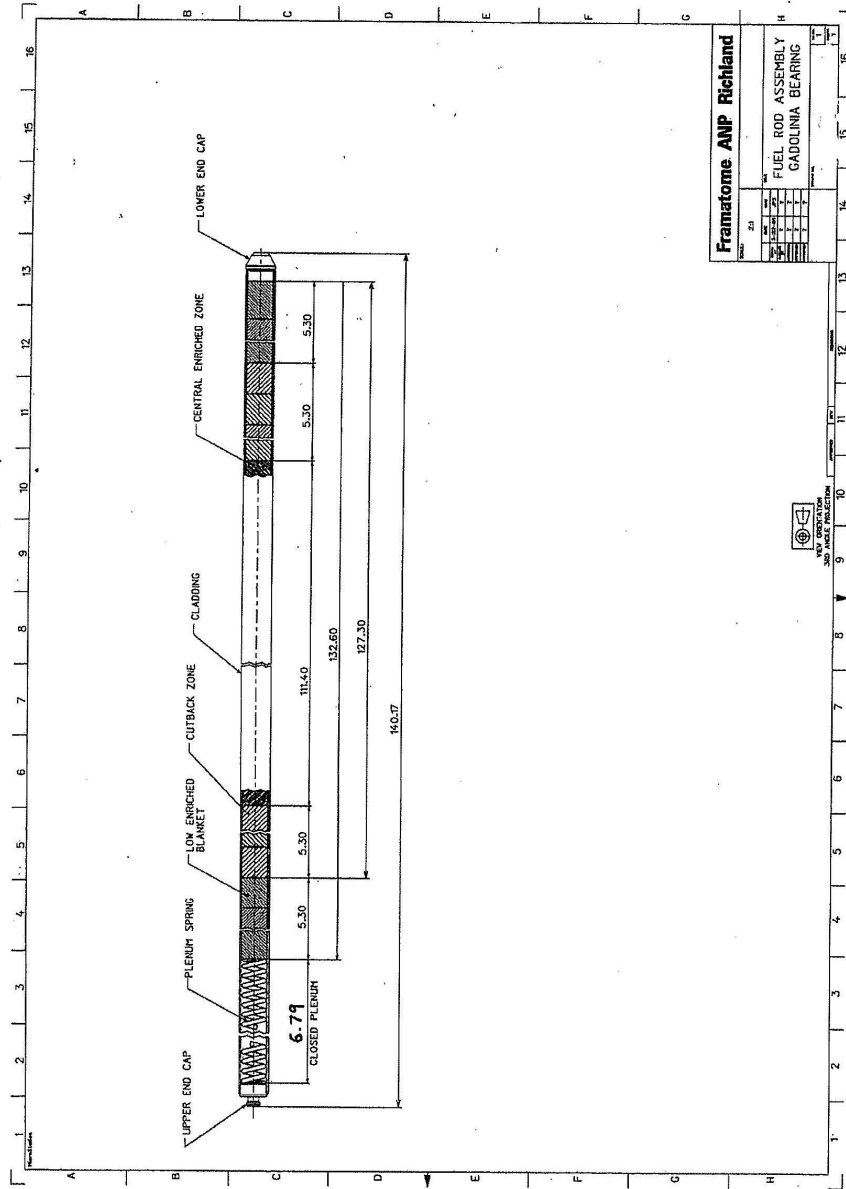




UO<sub>2</sub> FUEL ROD ASSEMBLY



FUEL ROD ASSEMBLY  
GADOLINIA BEARING



CONTROL ROD

