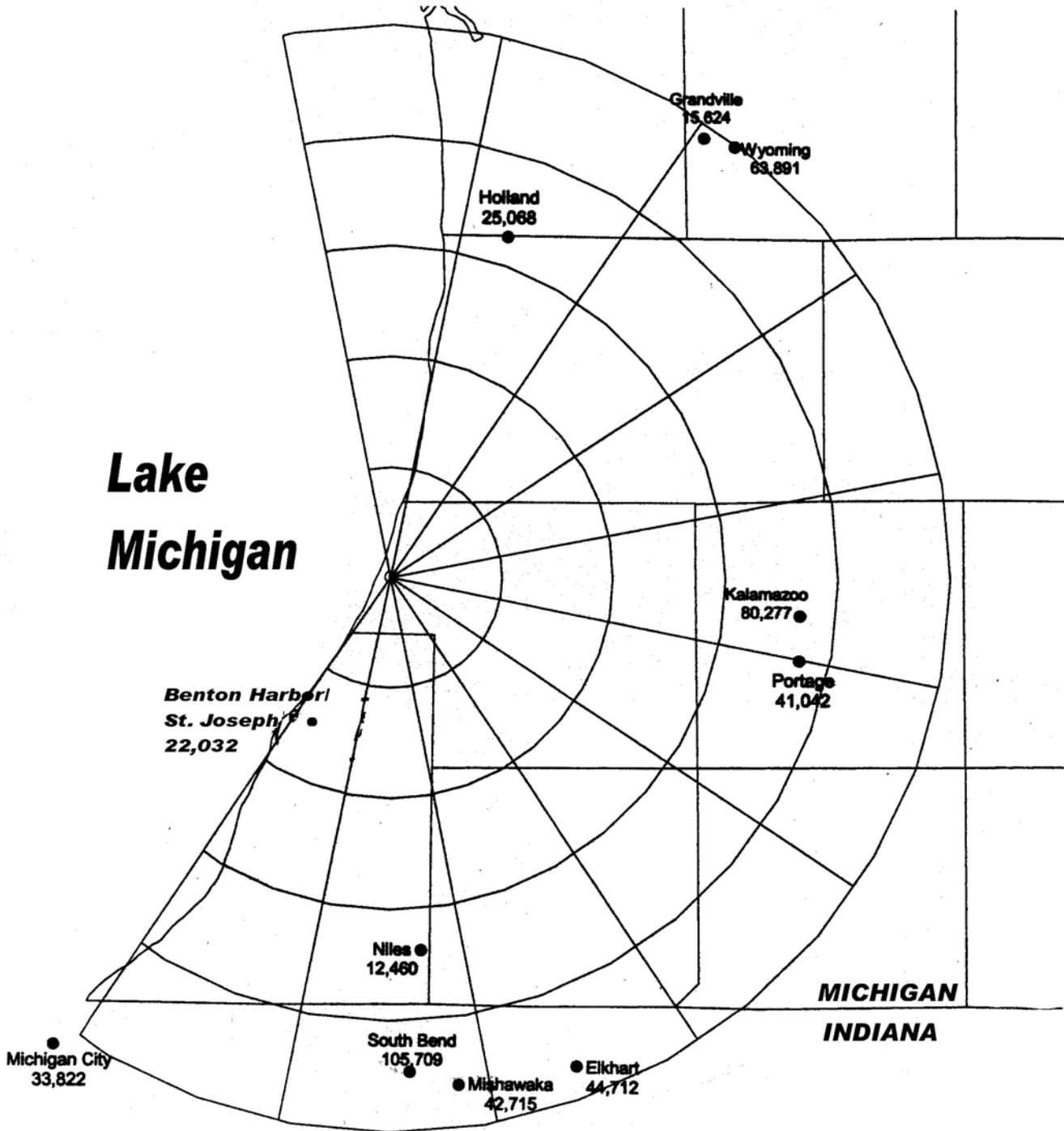
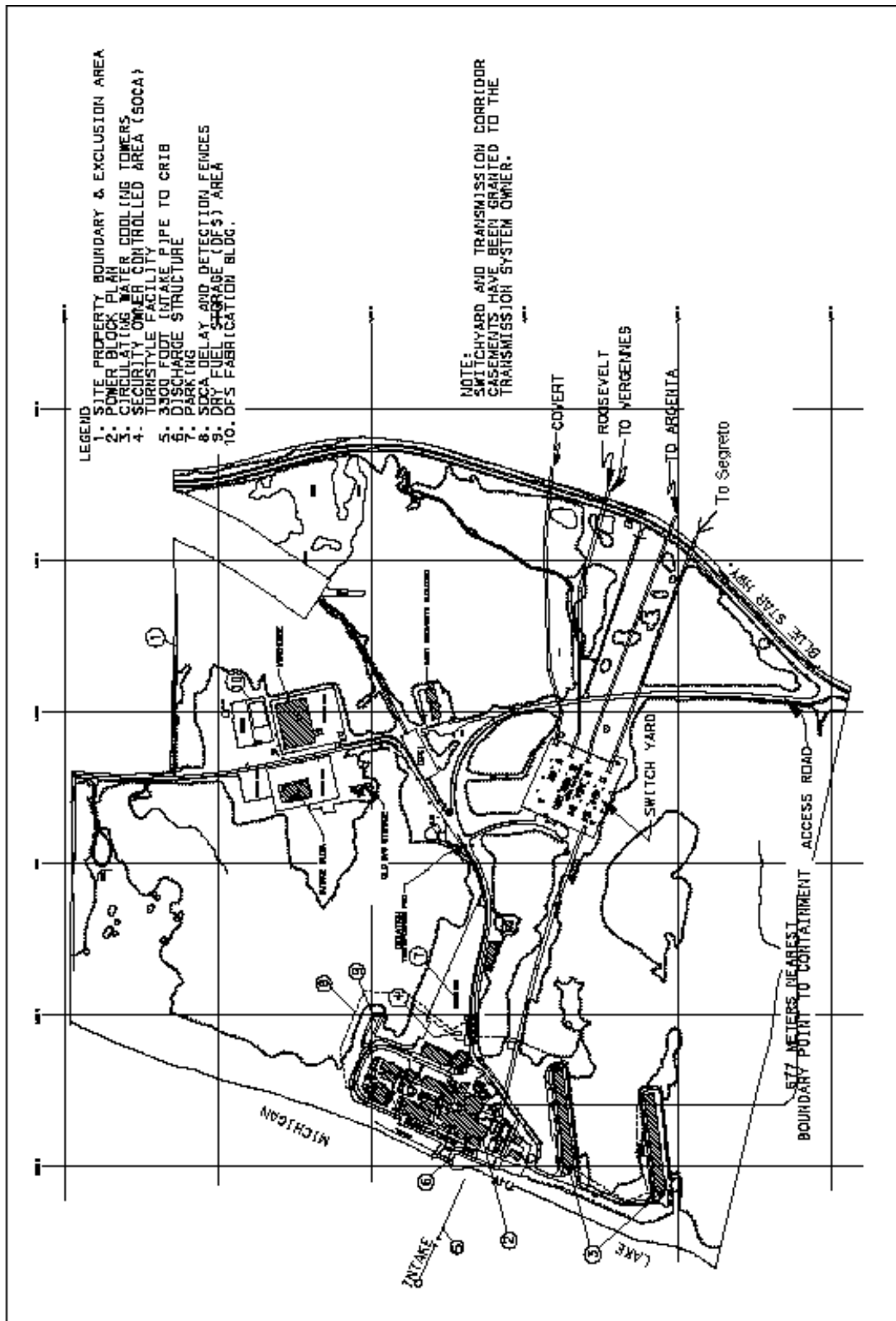


**POPULATION CENTERS
1990 CENSUS OVER 10,000, 0 TO 50 MILES**

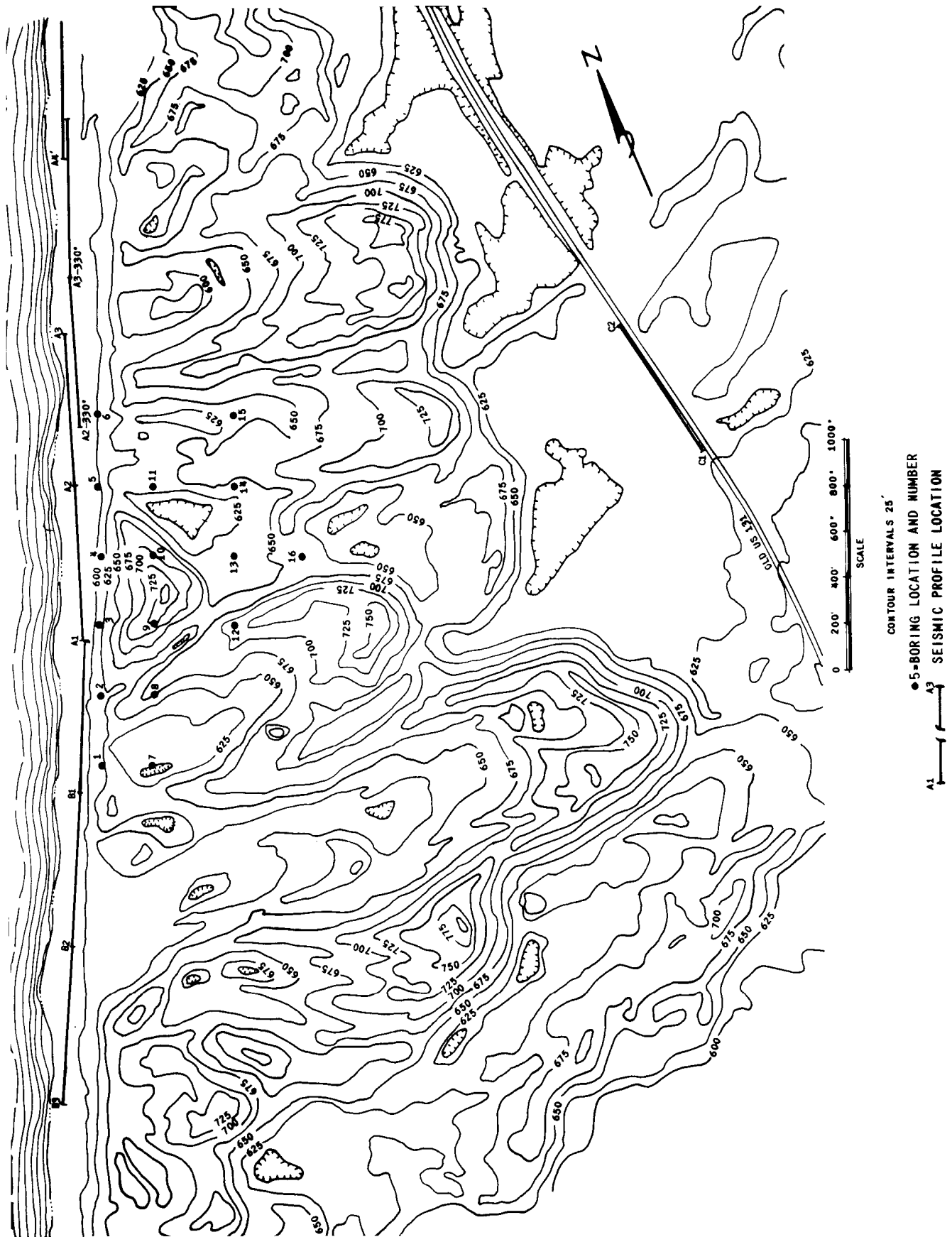
NOTE: Population values reported for incorporated cities or villages only.



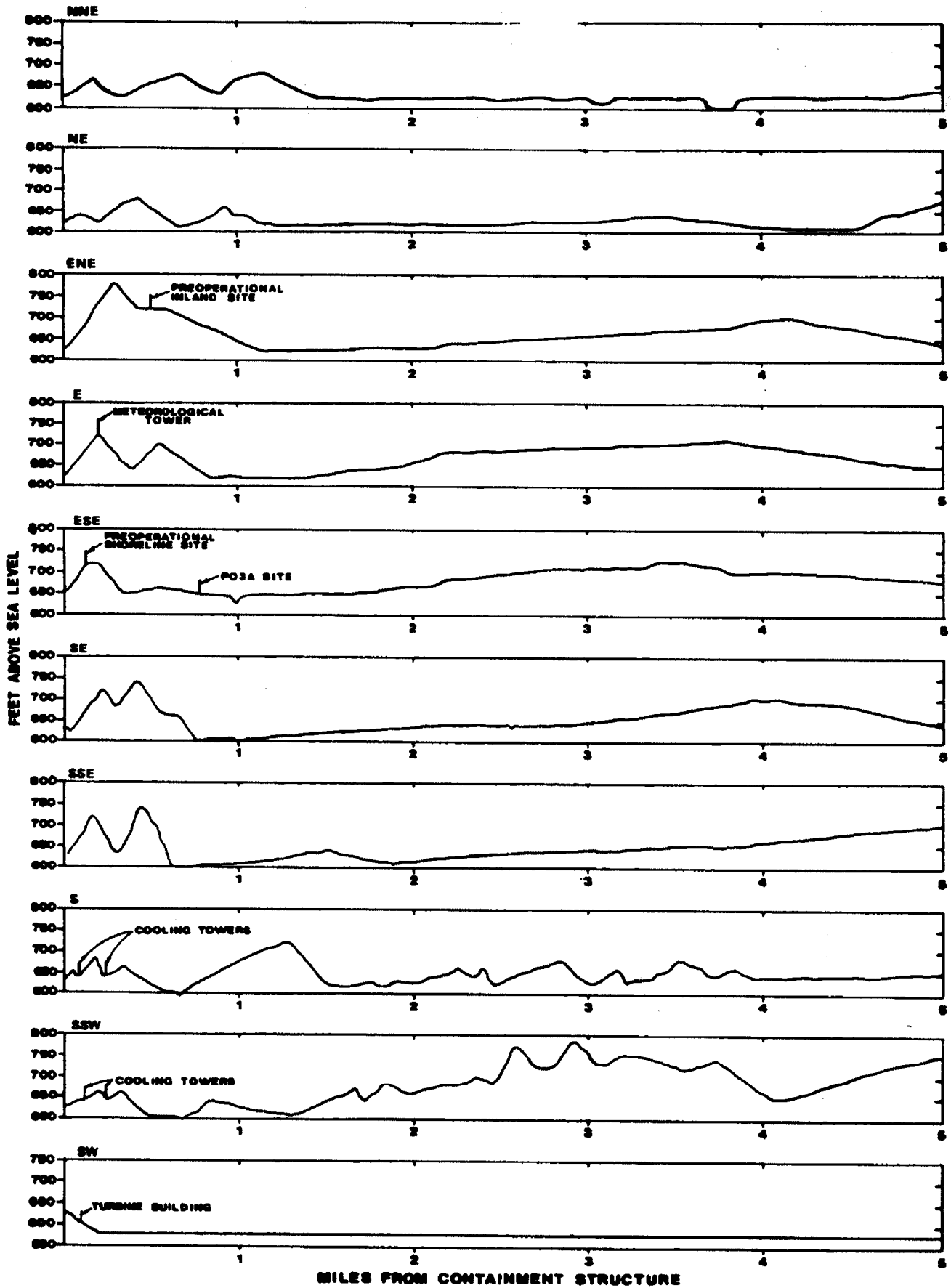
SITE LAYOUT



SITE TOPOGRAPHY, BORING LOCATIONS,
AND SEISMIC PROFILES



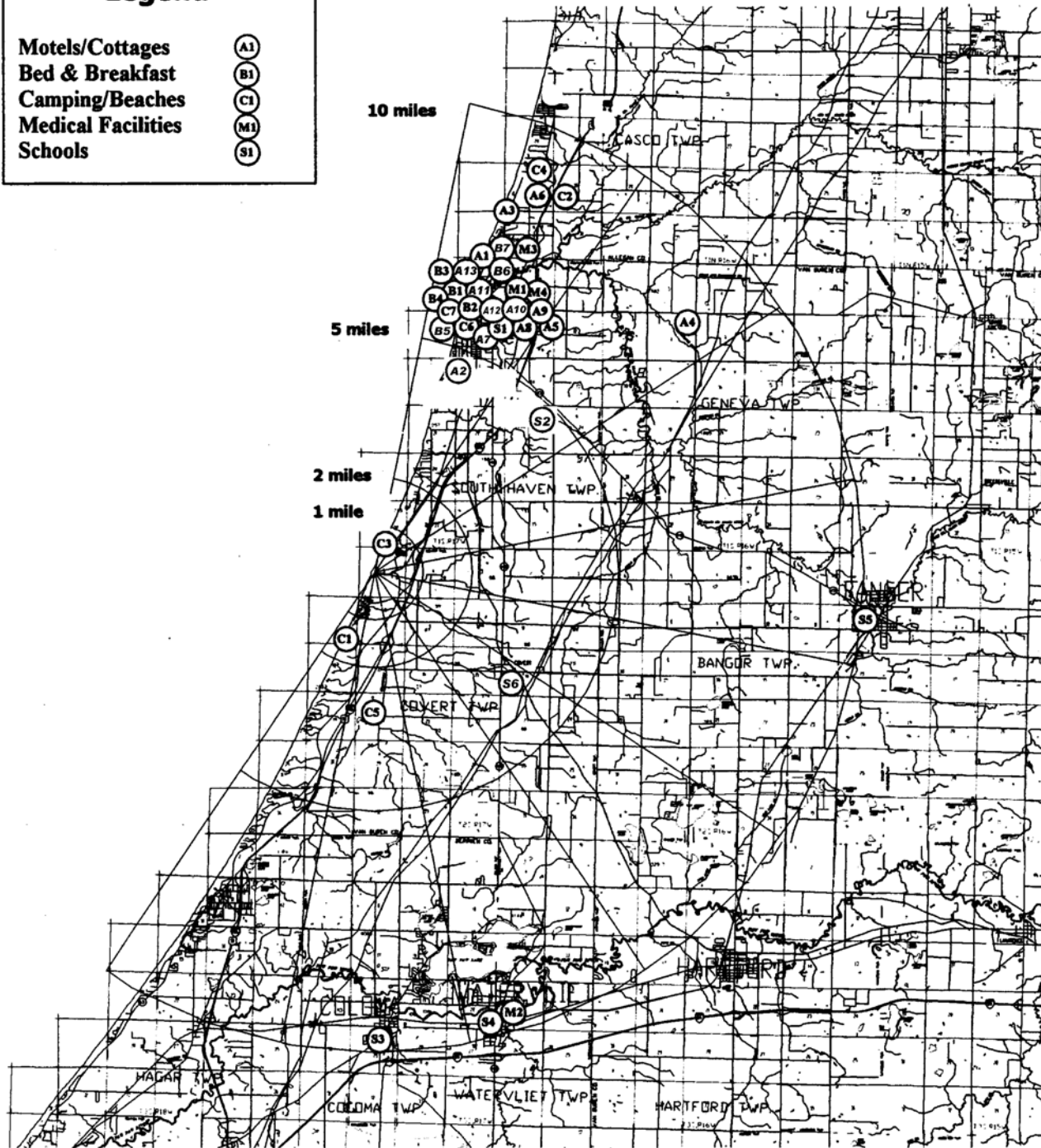
TOPOGRAPHY CROSS SECTIONS



SELECTED LAND USE CATEGORIES

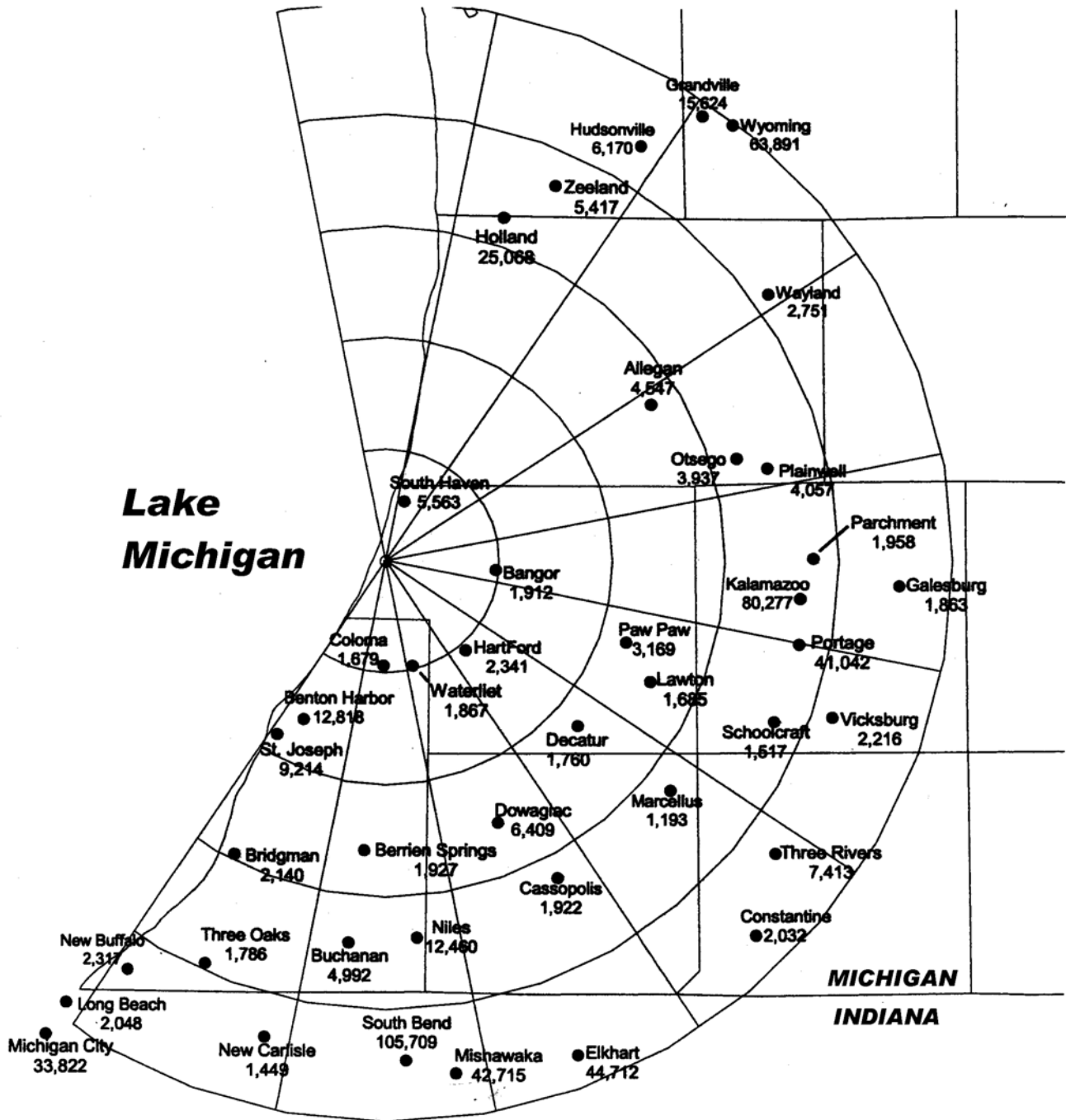
Legend

Motels/Cottages	(A1)
Bed & Breakfast	(B1)
Camping/Beaches	(C1)
Medical Facilities	(M1)
Schools	(S1)



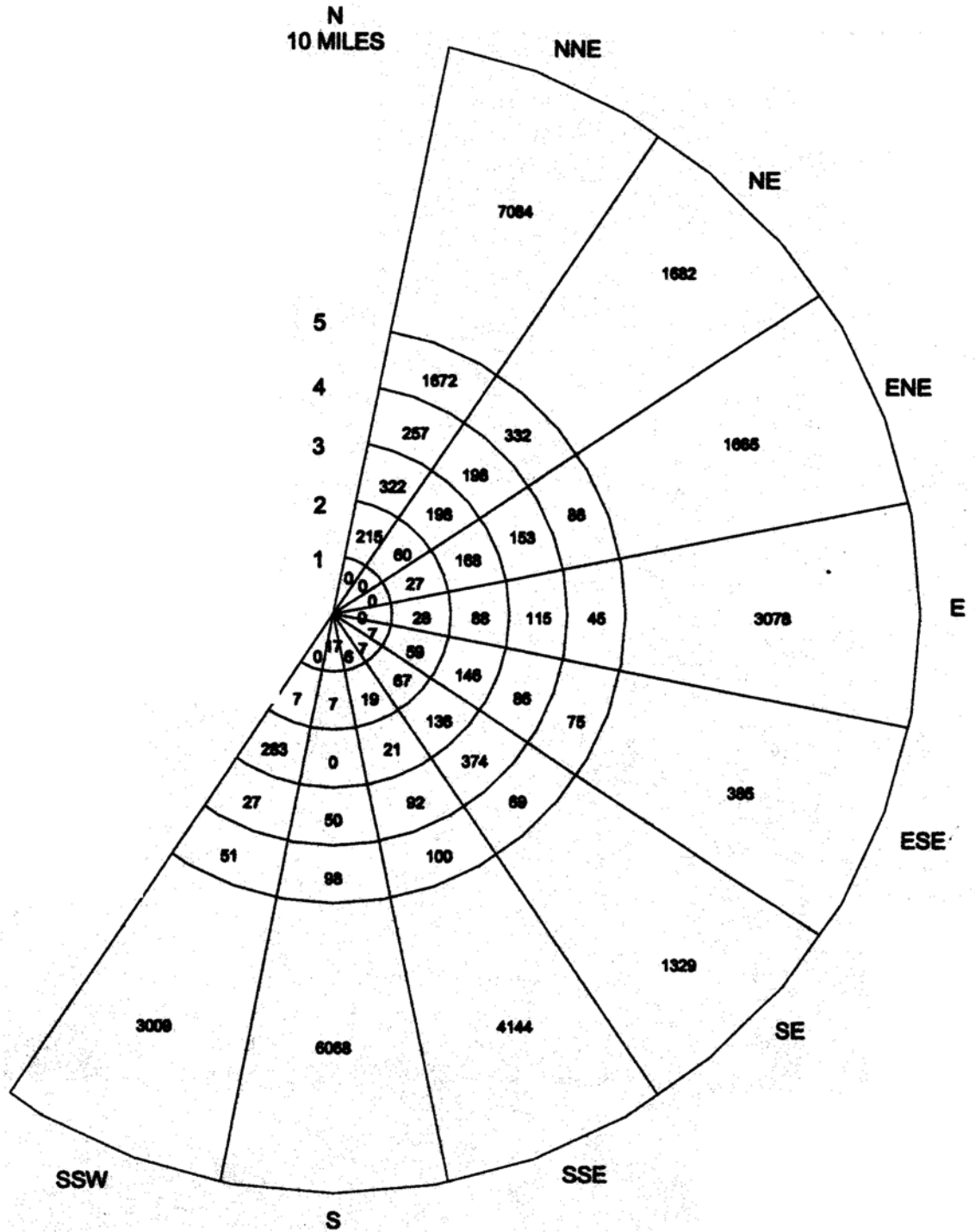
**POPULATION CENTERS
1990 CENSUS OVER 1,000, 0 TO 50 MILES**

NOTE: Population values reported for incorporated cities or villages only.

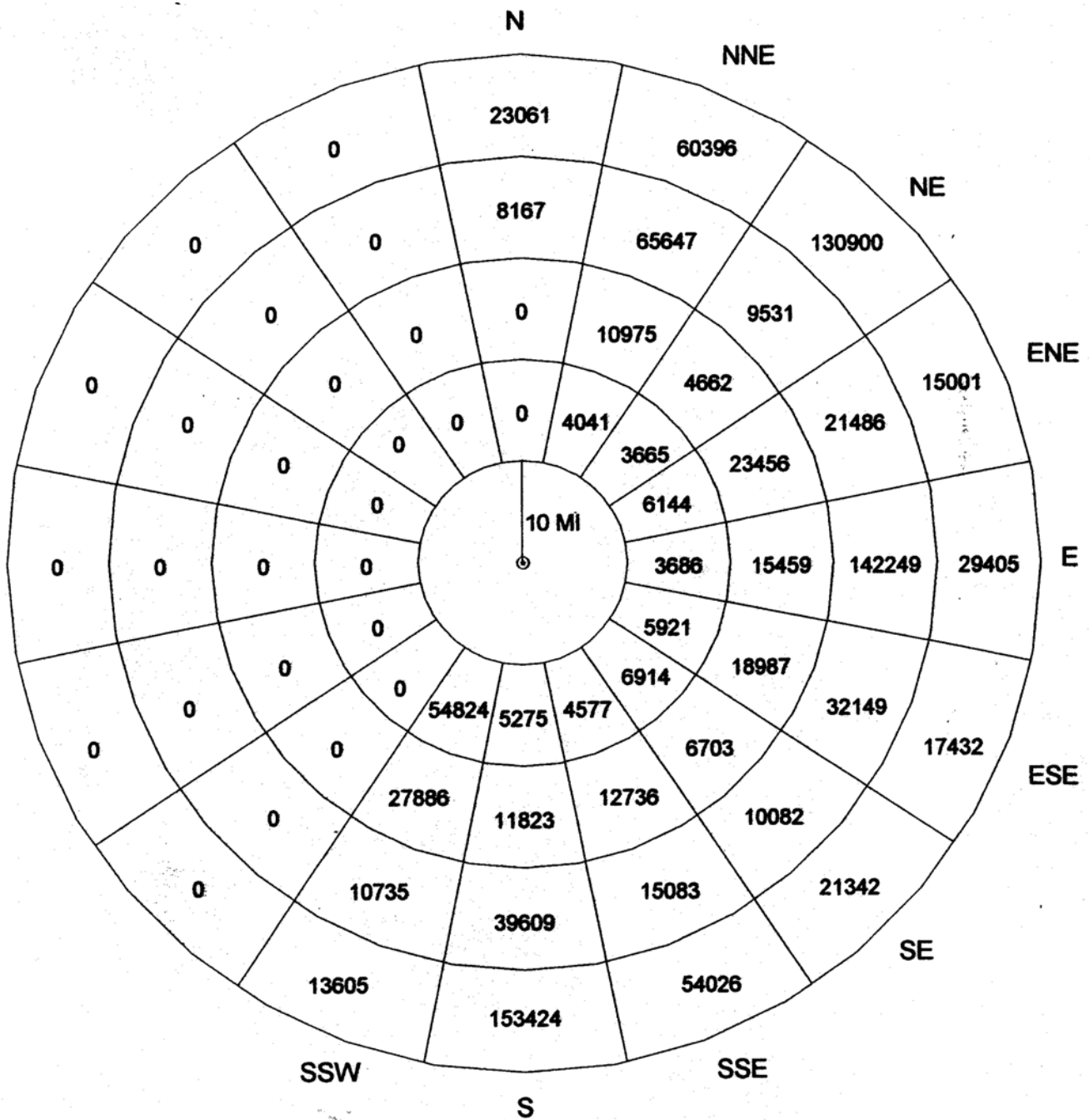


PERMANENT RESIDENTIAL POPULATION BREAKDOWN (1990)

NOTE: Lake Michigan occupies part or all of cardinal compass points. SSW through N.

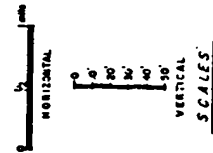
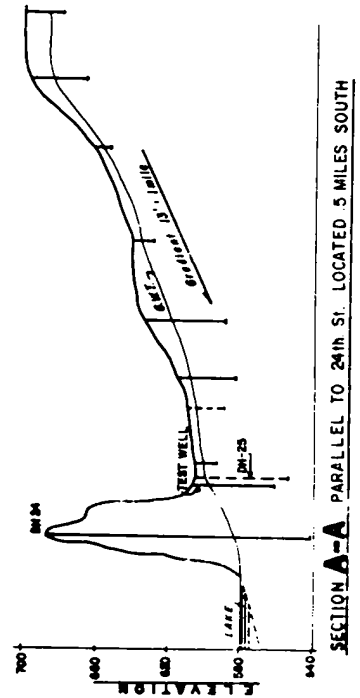
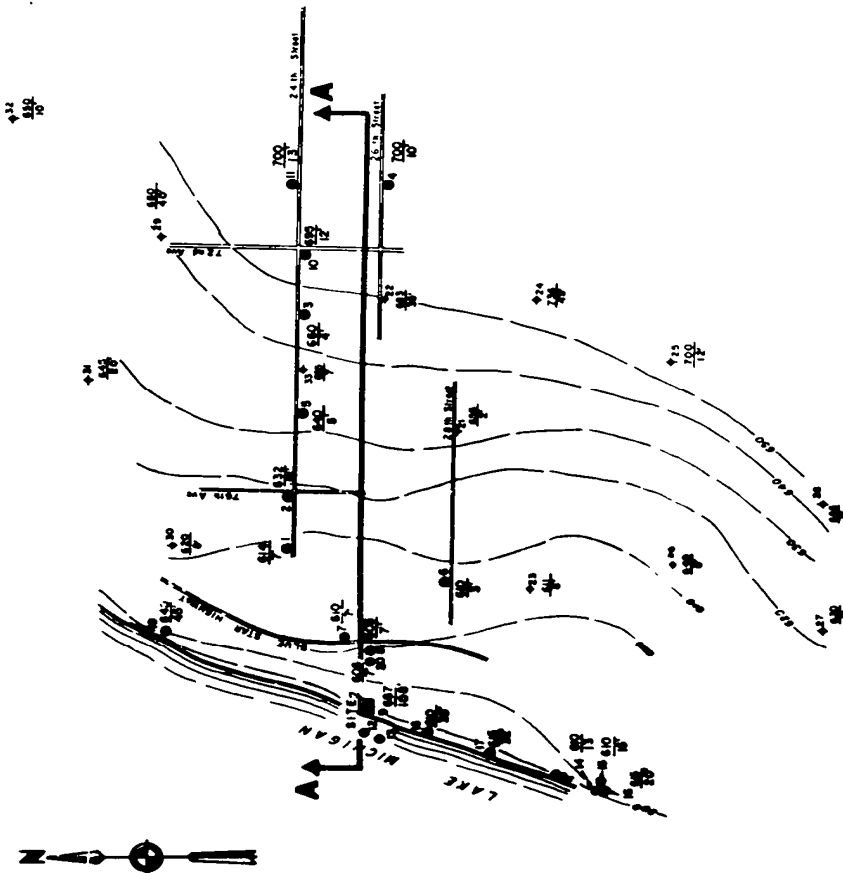


POPULATION DISTRIBUTION (1990)
10 TO 50 MILES



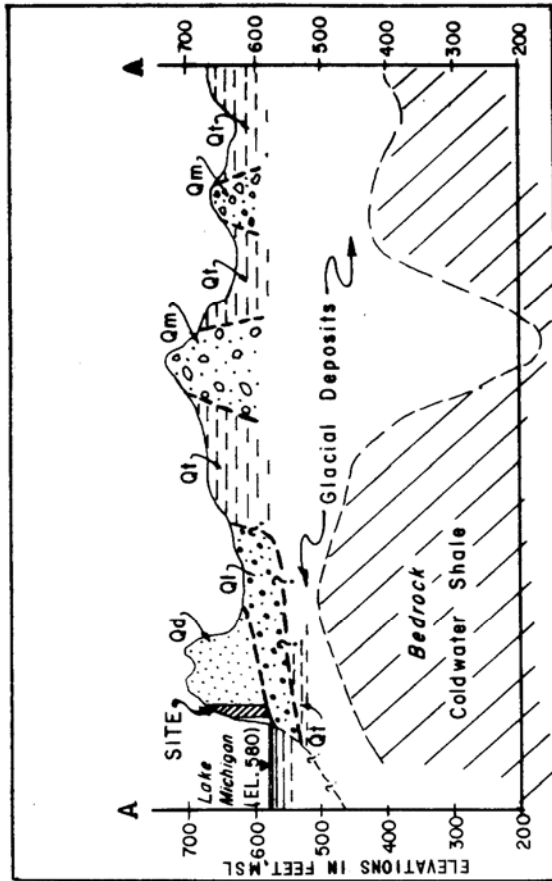
GROUNDWATER ELEVATIONS
AND AREA GRADIENTS

WATER SAMPLE LOCATION AND NUMBER 7
EXPLANATION
 510 - ELEVATION OF WELL COLLAR
 7' - DEPTH TO WATER
 528 - ELEVATION OF COLLAR
 8' - DEPTH TO WATER
 600 - GROUND WATER CONTOUR



7

GEOLOGIC MAP AND CROSS SECTION



SECTION A-A

--- BEDROCK CONTOURS (FROM REFERENCE 4)

--- BEDROCK CONTOURS (FROM REFERENCE 8)

NOTES:

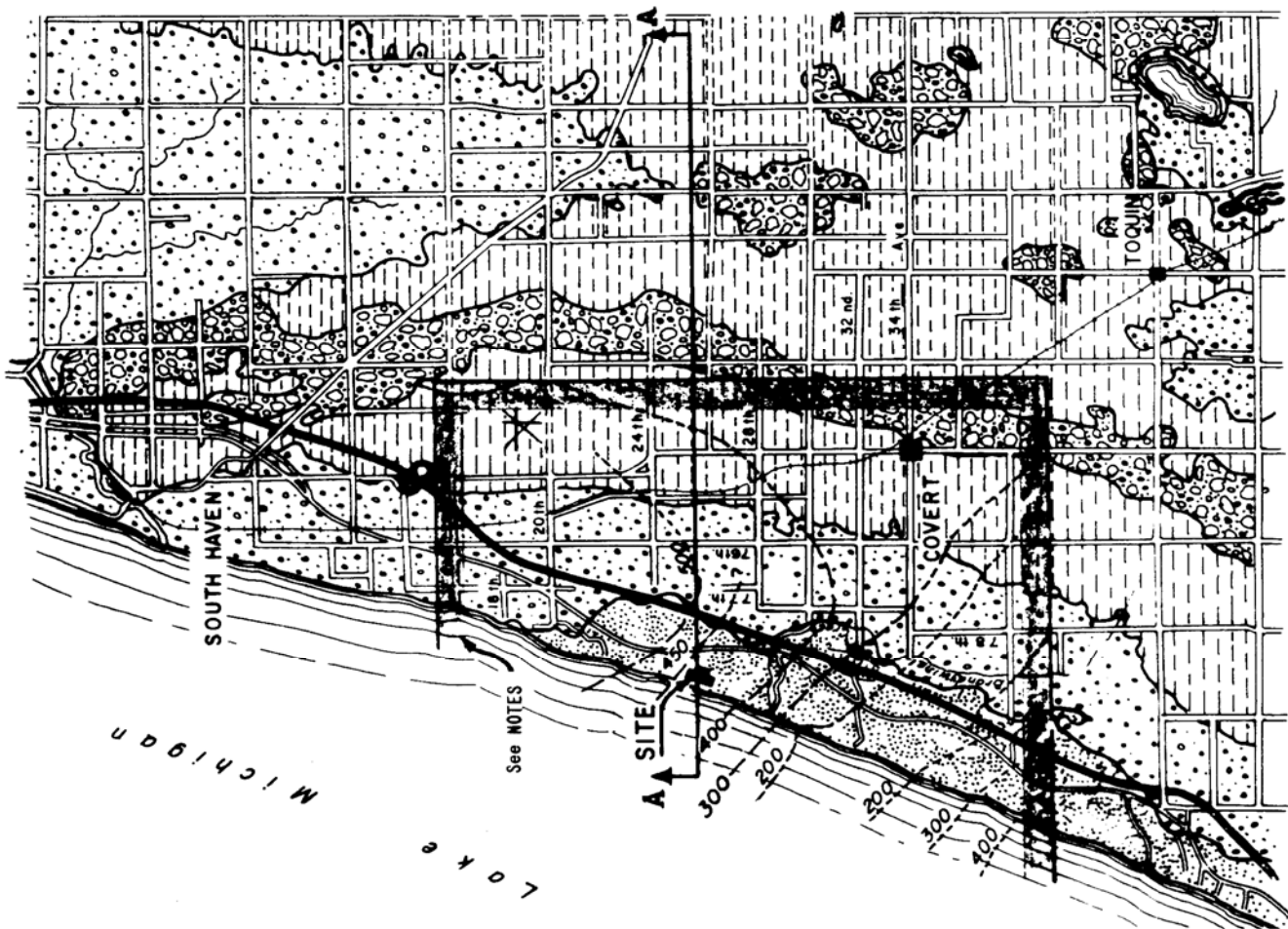
Area showing approximate contours on bedrock.
Datum is Mean Sea Level.

Qm - Terminal Moraine

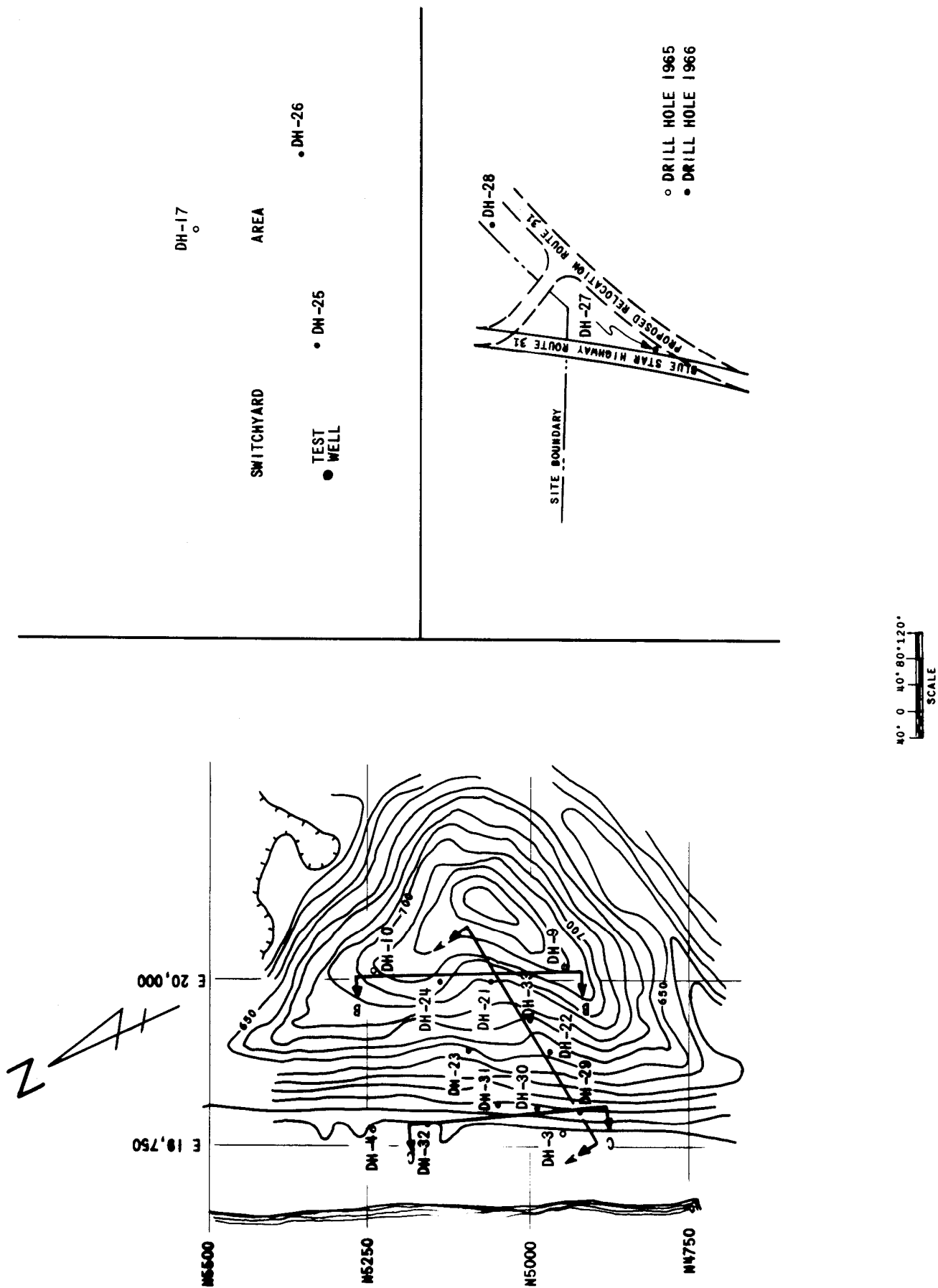
Ql - Ground Moraine

Ql - Lake Deposits

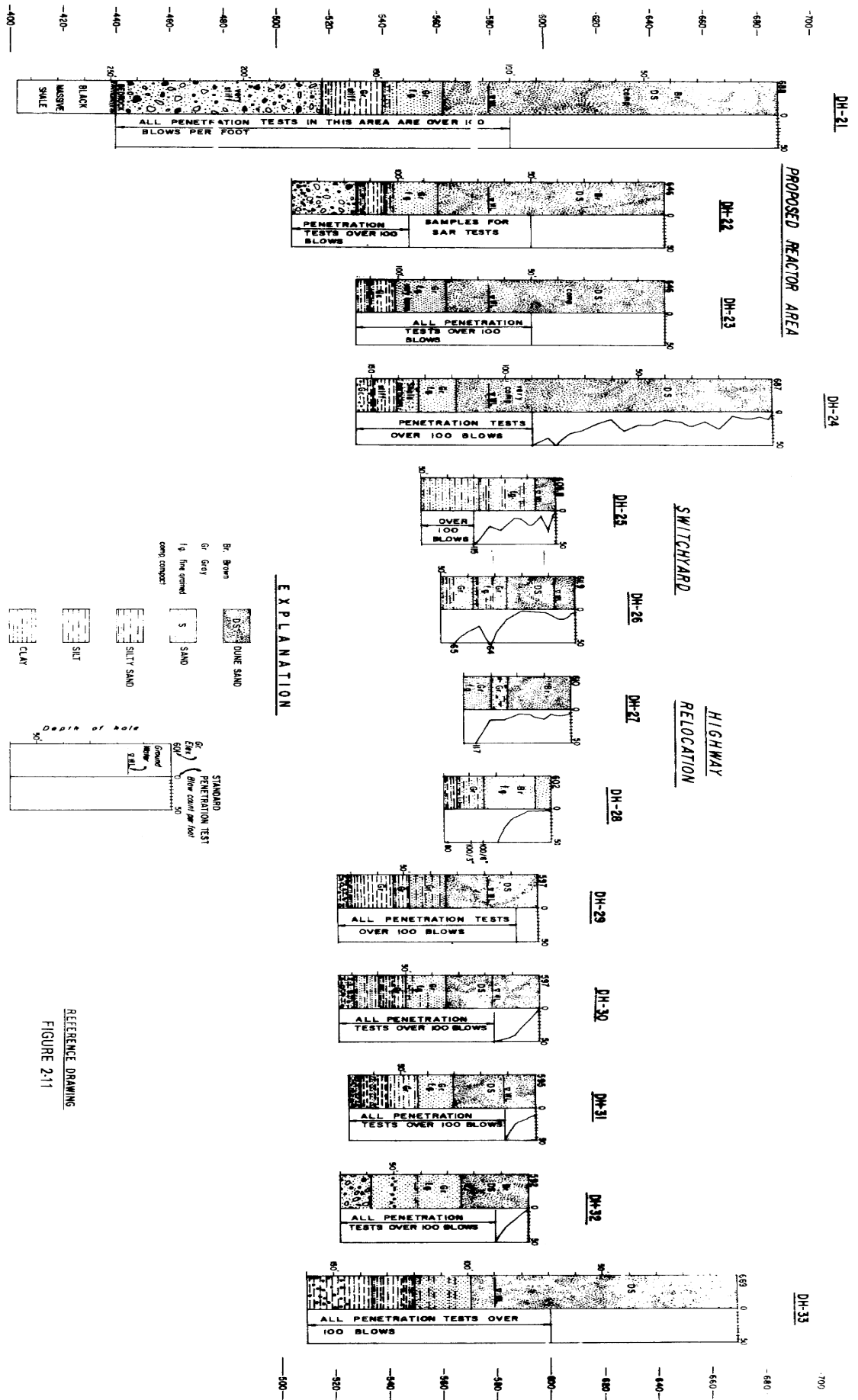
Qd - Dune Areas



1966 DRILLING PROGRAM
DRILL HOLE AND CROSS SECTION LOCATIONS

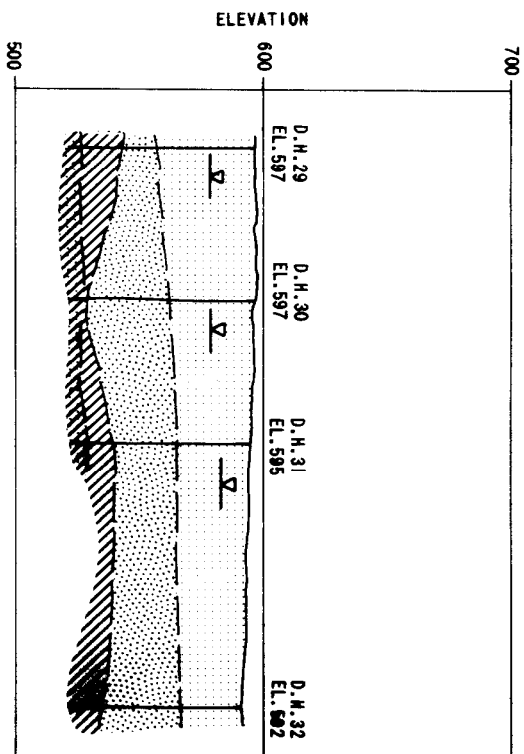
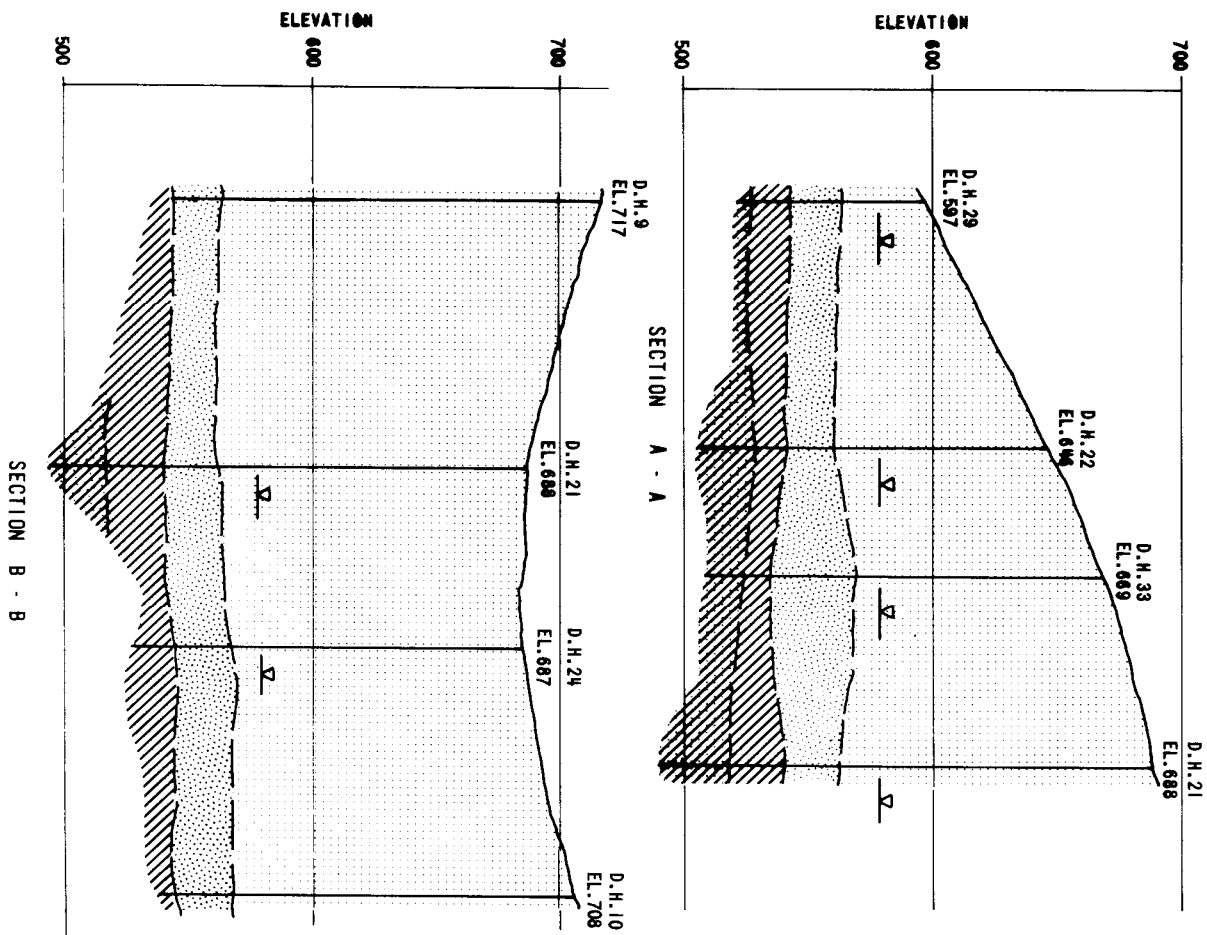


1966 DRILLING PROGRAM
DRILL LOGS AND SOIL PENETRATION TEST RESULTS



REFERENCE DRAWING
FIGURE 2-11

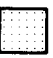




1966 DRILLING PROGRAM
SUBSURFACE SECTIONS



NOTES:

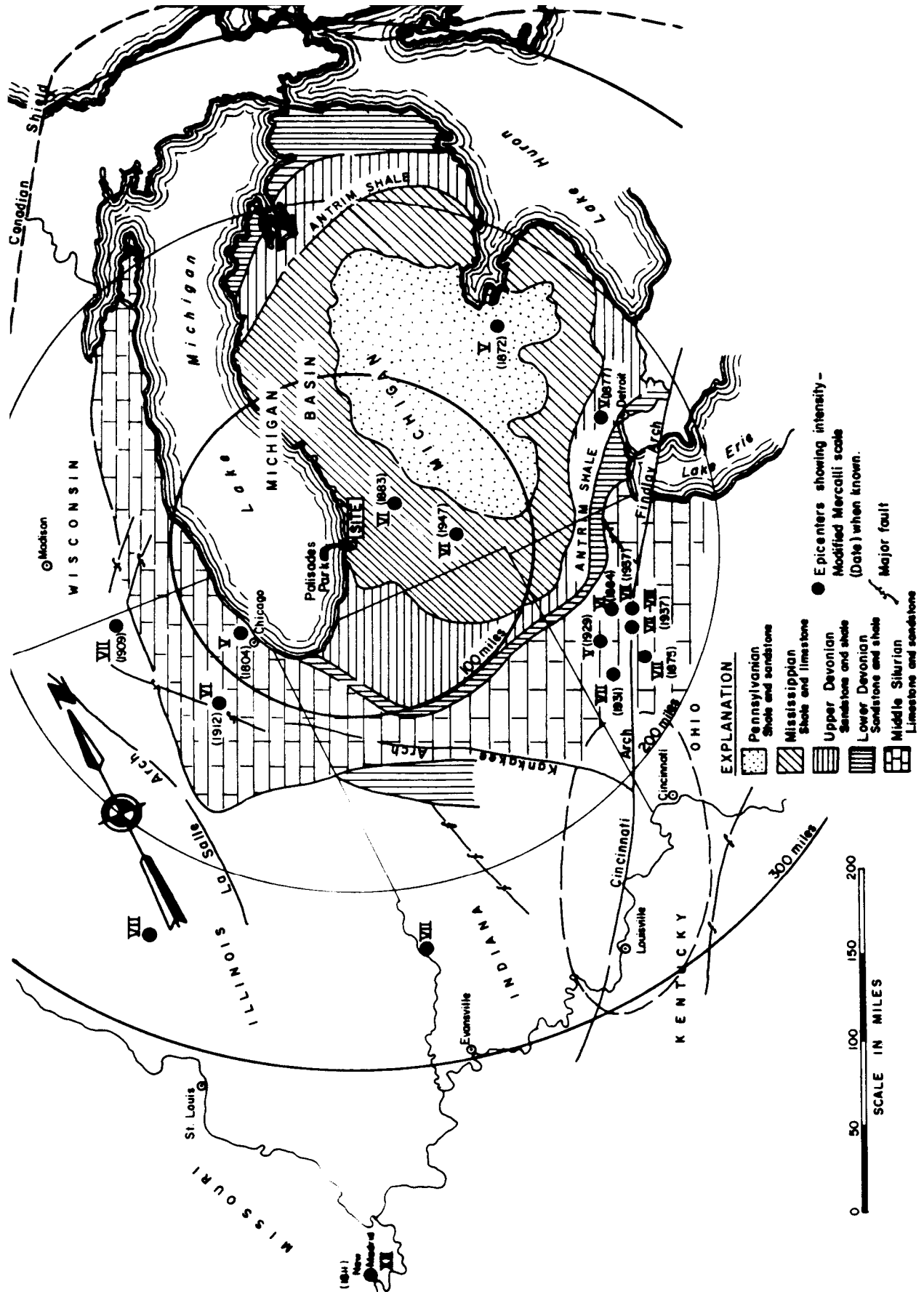
1. BORING 21 REACHED BEDROCK AT EL. 400'. BOTTOM OF HOLE WAS AT EL. 603'.
2. LOGS OF BORINGS 9 AND 10 ARE GIVEN IN REFERENCE 9; REMAINING LOGS ARE GIVEN IN REFERENCES 3 AND 10.

LEGEND

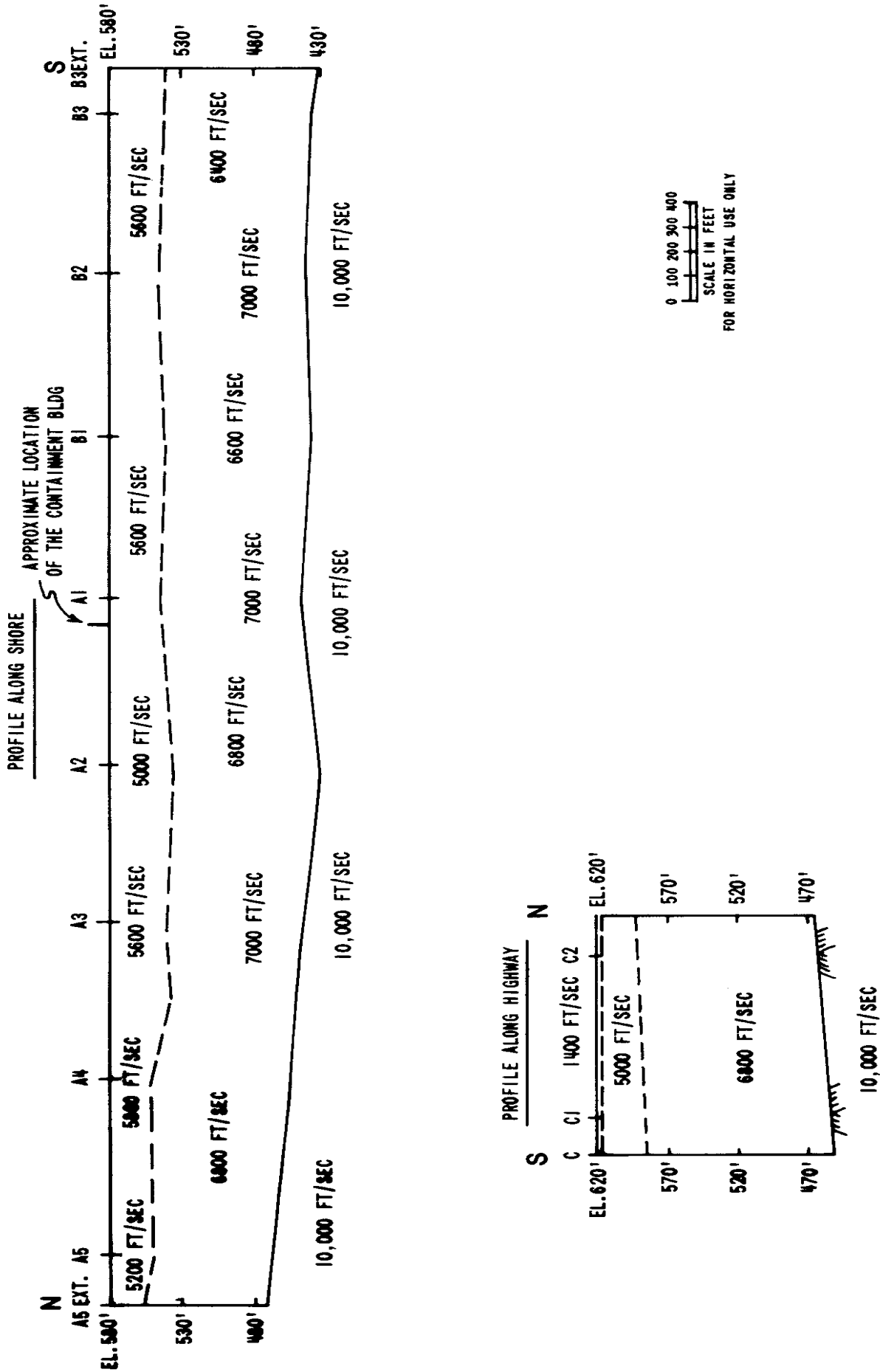
-  UNIFORM GRAIN SIZE SAND. (DUNE SAND)
-  STIFF GRAY CLAY.
-  WATER LEVEL AT TIME OF DRILLING. (IF MEASURED.)
-  DENSE TO VERY DENSE GRAY SILTY SAND OR SANDY SILT.
-  STIFF TO HARD GRAY GLACIAL TILL.

REFERENCE DRAWINGS
FIGURES 2-11 AND 2-12

REGIONAL STRUCTURES, BEDROCK GEOLOGY, MAJOR FAULTING AND EPICENTERS

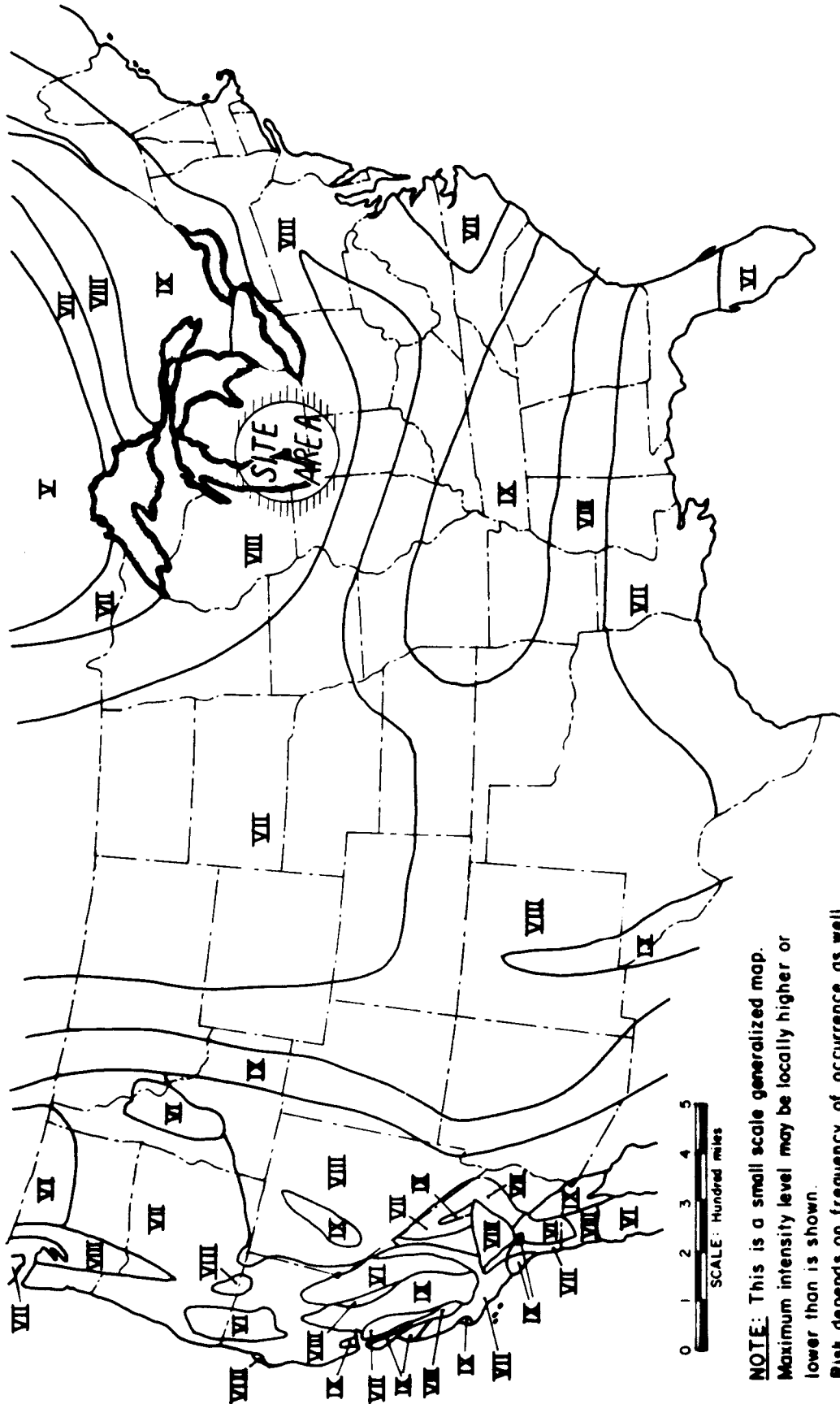


COMPRESSIONAL (P)WAVE VELOCITIES
FROM SEISMIC SURVEY



NOTE: DATA TAKEN FROM REFERENCE 8

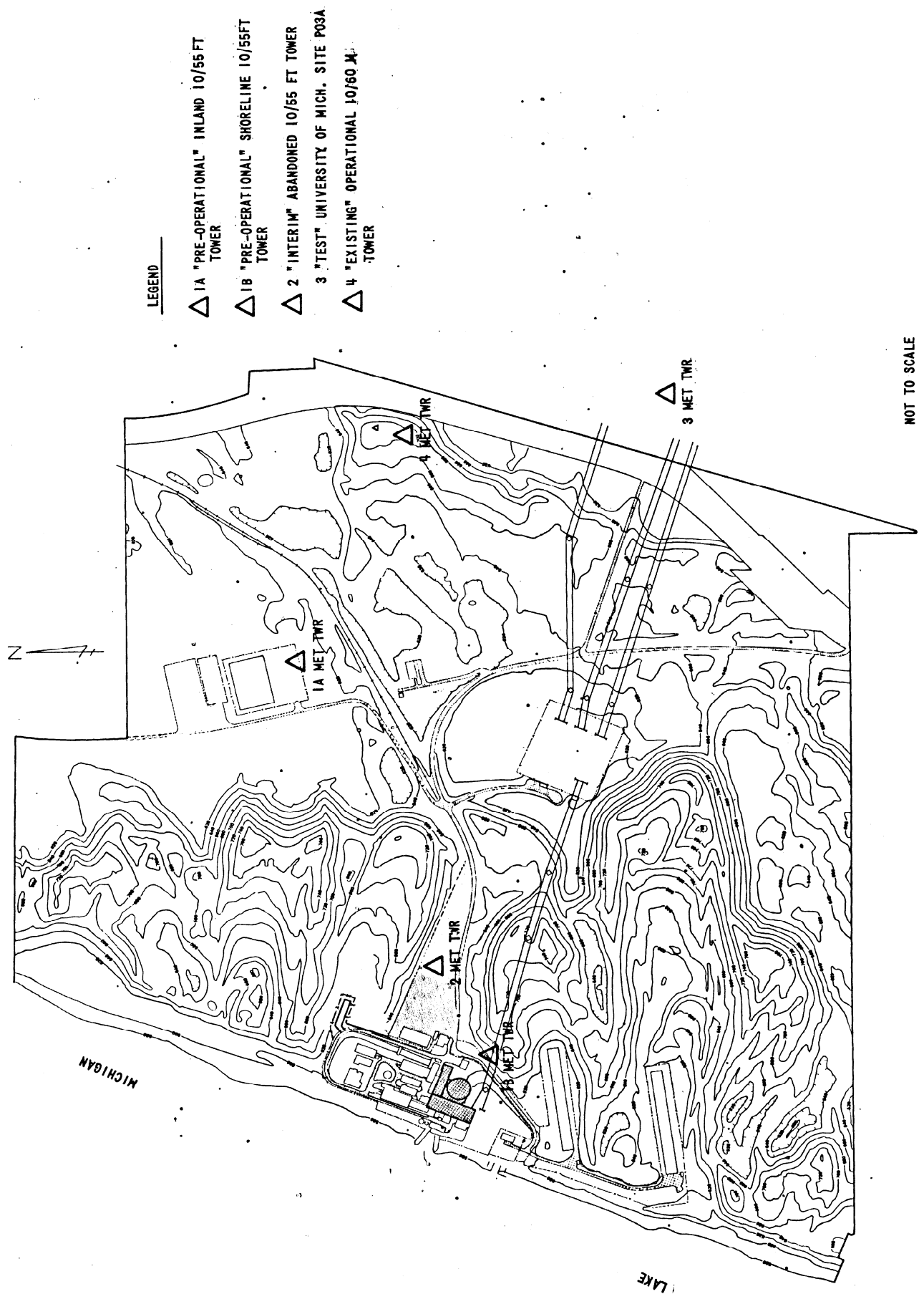
SEISMIC REGIONALIZATION:
ZONES OF PROBABLE MAXIMUM INTENSITY (MM)



NOTE: This is a small scale generalized map.
Maximum intensity level may be locally higher or lower than is shown.
Risk depends on frequency of occurrence as well as on maximum expected intensity

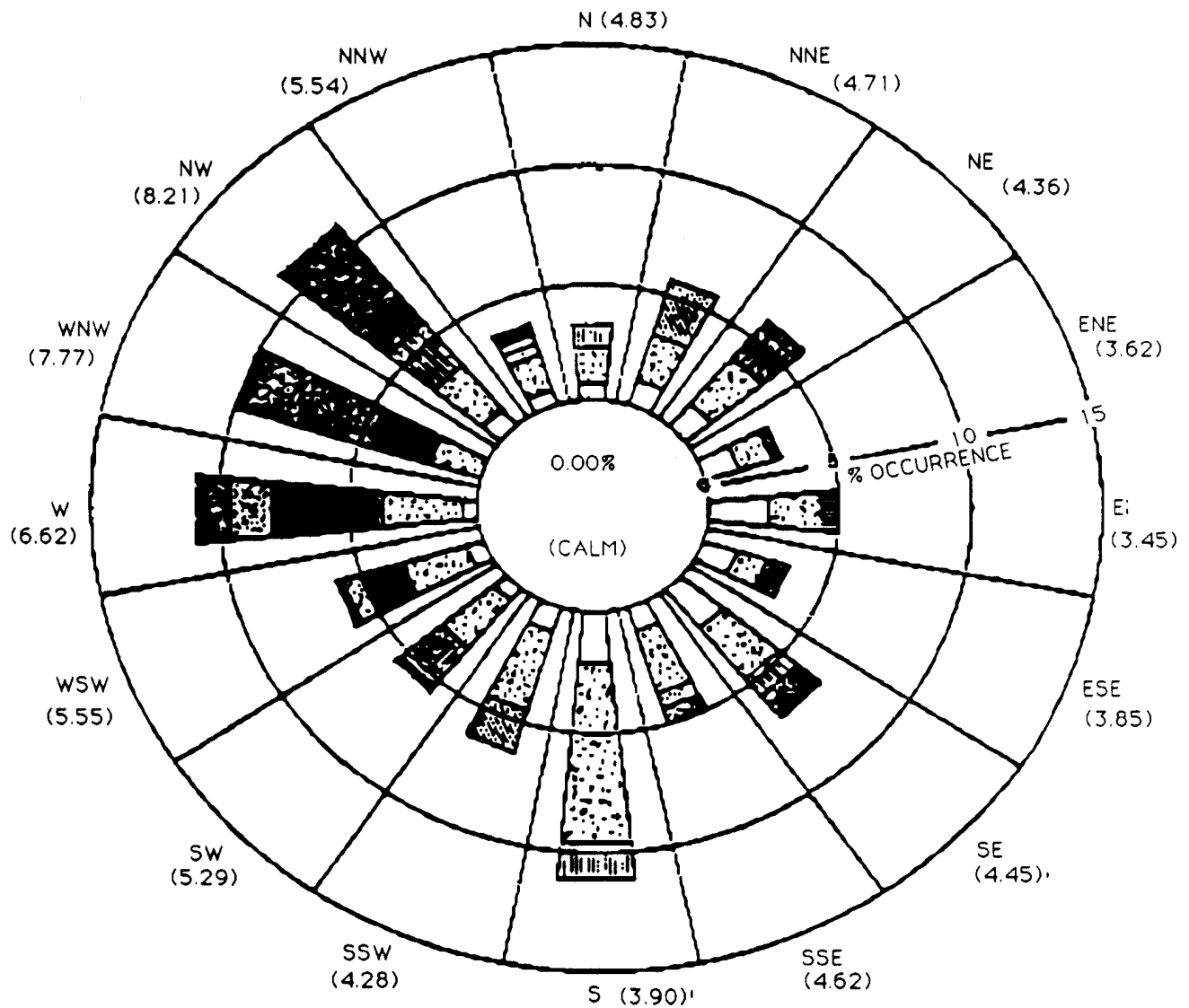
After C.F. Richter, Bulletin Seismological Society of America, Vol 49, April, 1959.

METEOROLOGICAL TOWER LOCATIONS



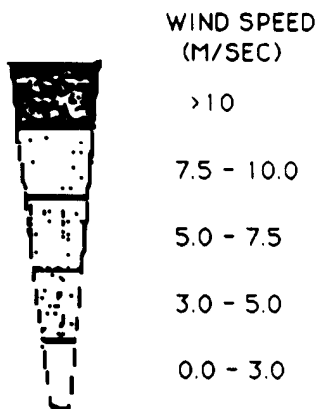
NOT TO SCALE

10 METER WIND FREQUENCY DISTRIBUTION - PALISADES SITE
DECEMBER 1, 1977 THROUGH FEBRUARY 28, 1978

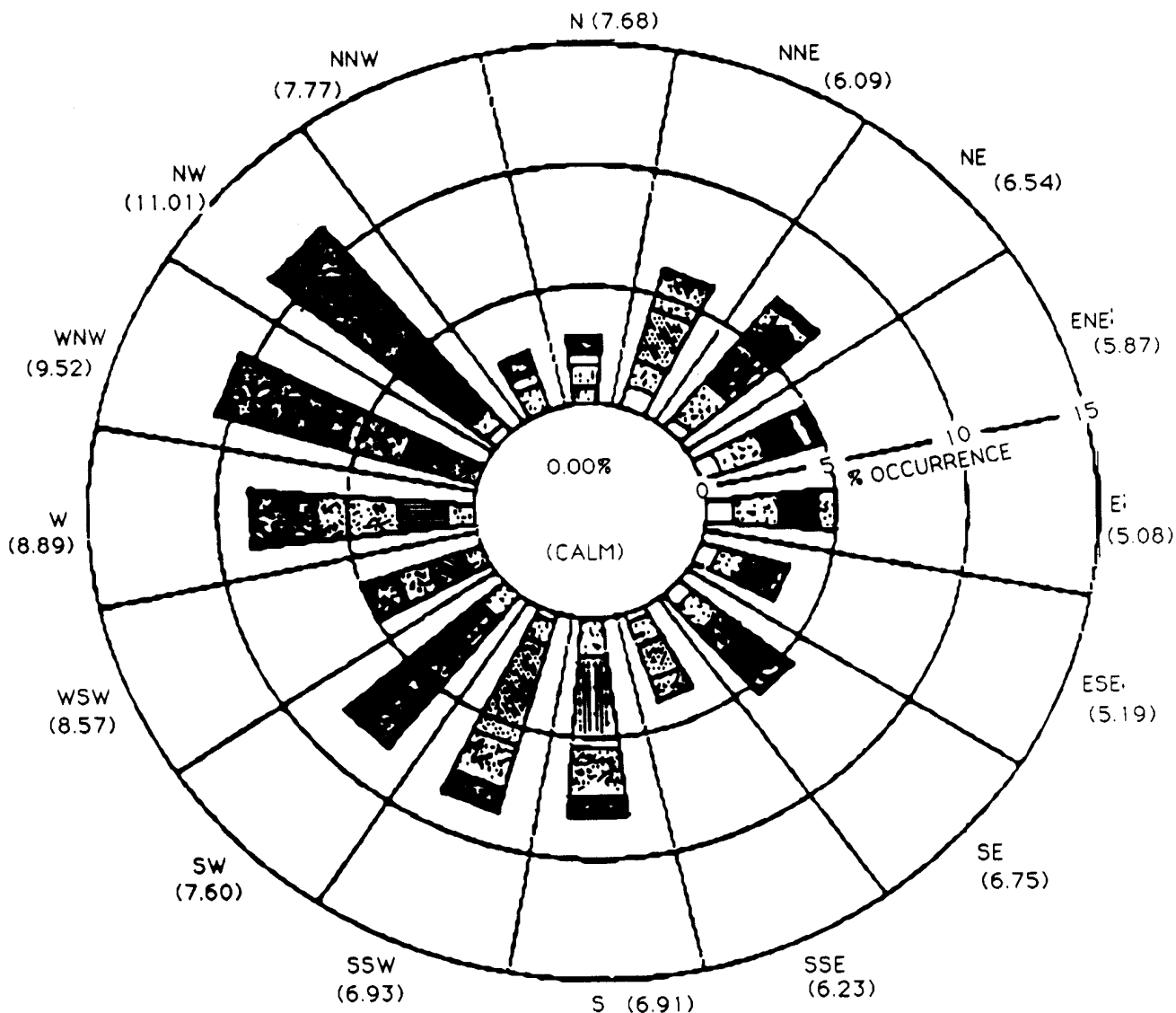


LEGEND:

(X.XX) - MEAN WIND SPEED
(m/sec) FOR SECTOR

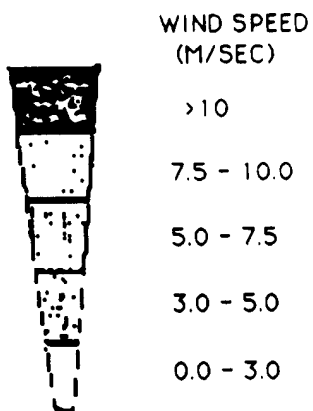


60 METER WIND FREQUENCY DISTRIBUTION - PALISADES SITE
DECEMBER 1, 1977 THROUGH FEBRUARY 28, 1978

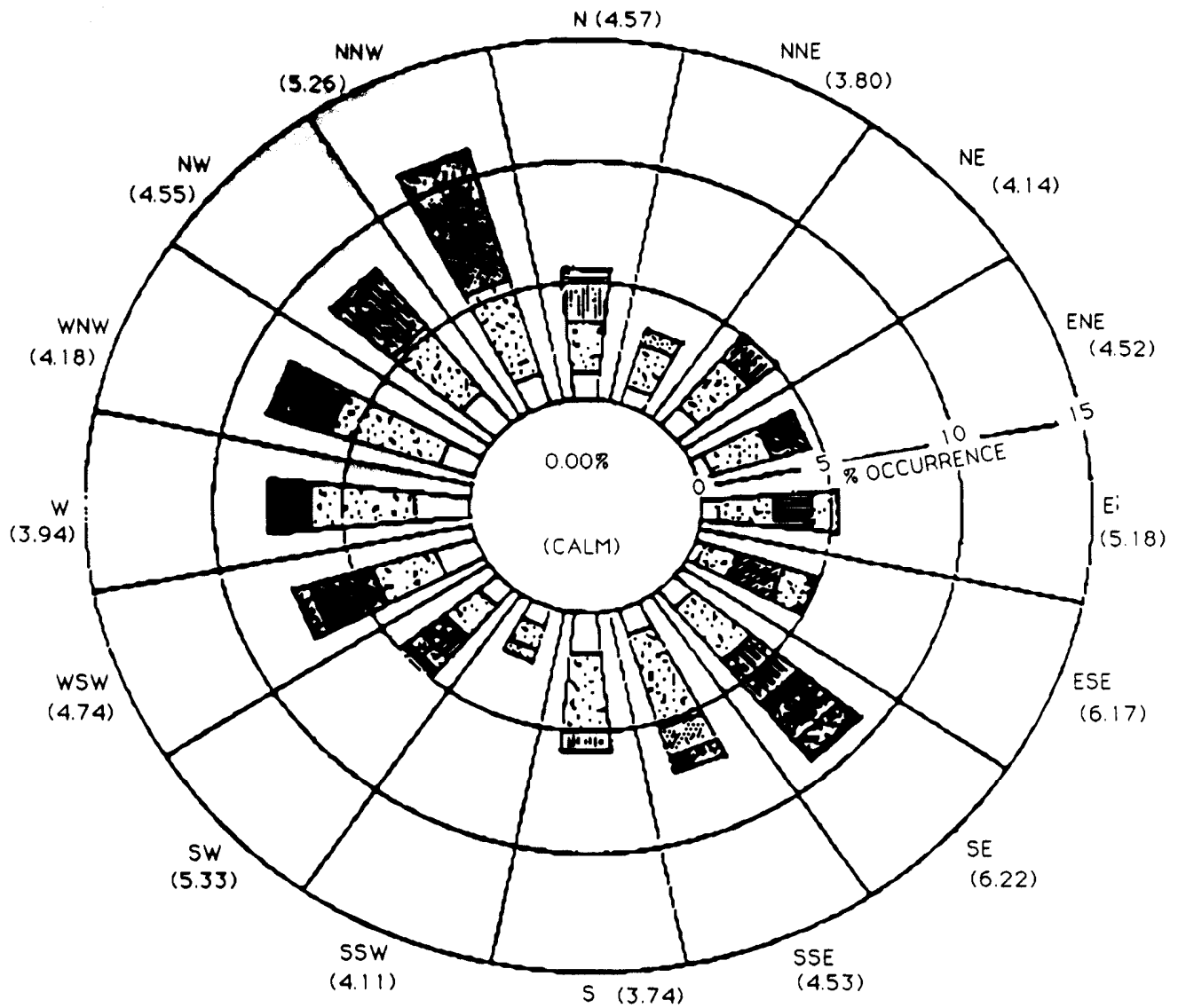


LEGEND:

(X.XX) - MEAN WIND SPEED
(m/sec) FOR SECTOR

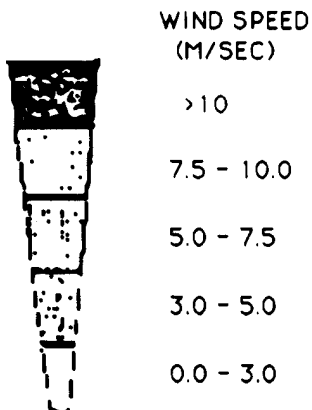


10 METER WIND FREQUENCY DISTRIBUTION - PALISADES SITE
MARCH 1 THROUGH MAY 31, 1978

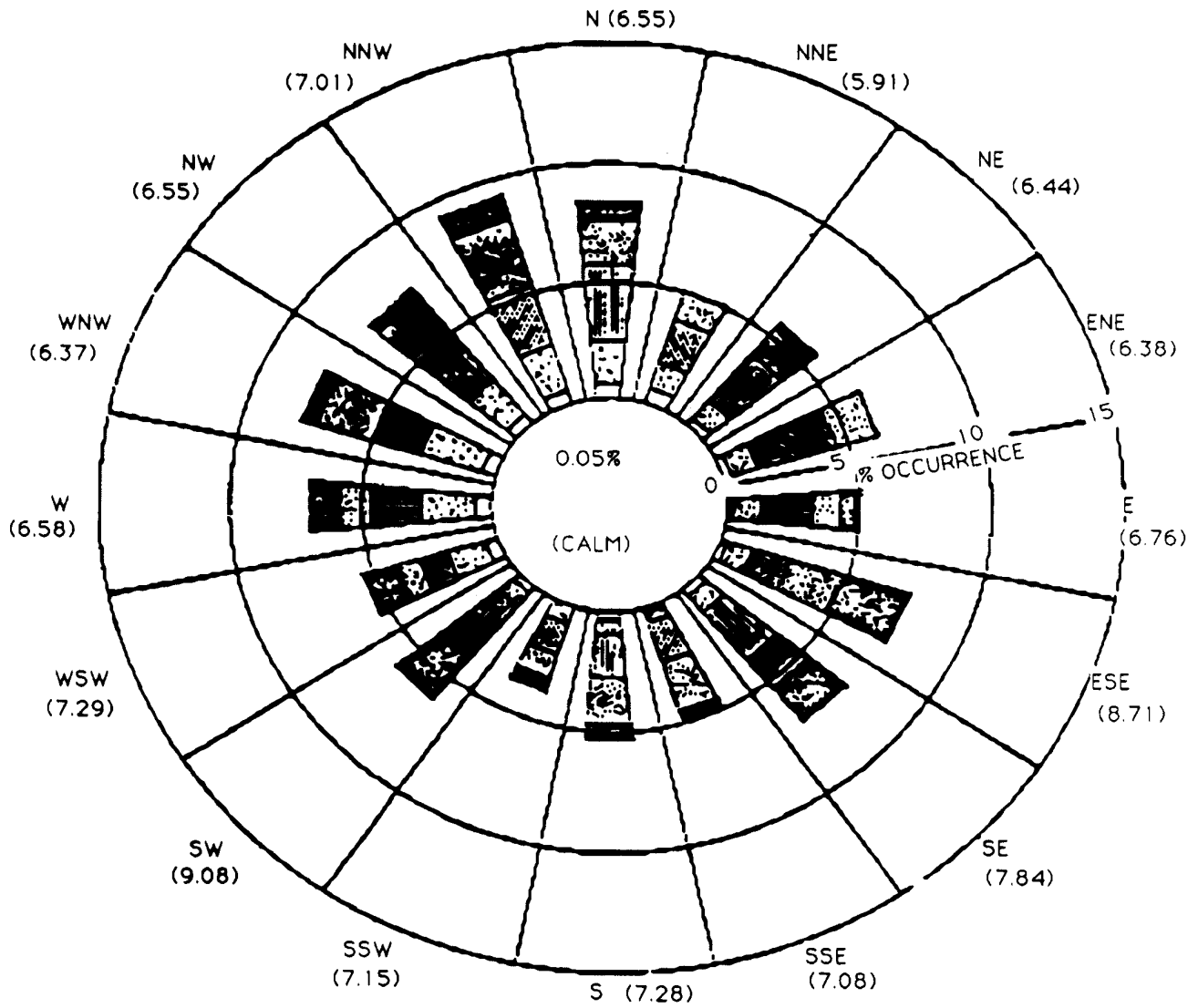


LEGEND:

(5.62) - MEAN WIND SPEED
(m/sec) FOR SECTOR

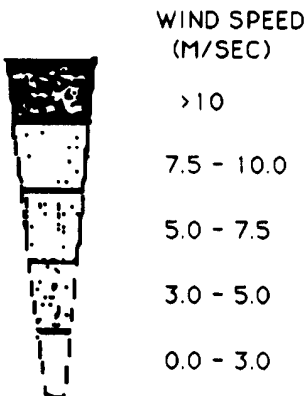


60 METER WIND FREQUENCY DISTRIBUTION - PALISADES SITE
MARCH 1 THROUGH MAY 31, 1978

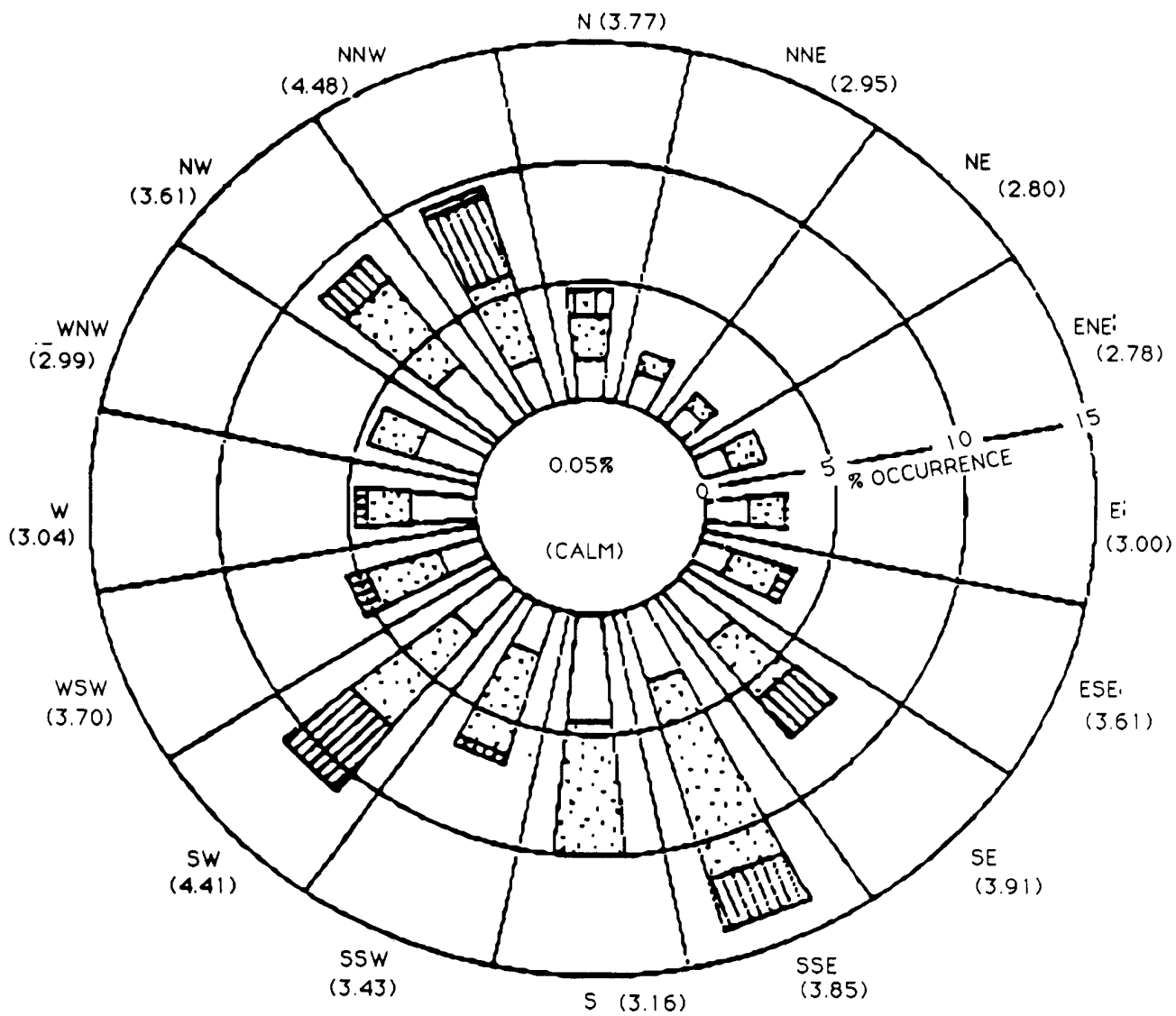


LEGEND:

(5.62) - MEAN WIND SPEED
(m/sec) FOR SECTOR

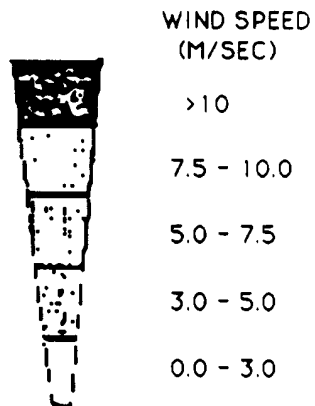


10 METER WIND FREQUENCY DISTRIBUTION - PALISADES SITE
JUNE 1 THROUGH AUGUST 31, 1978

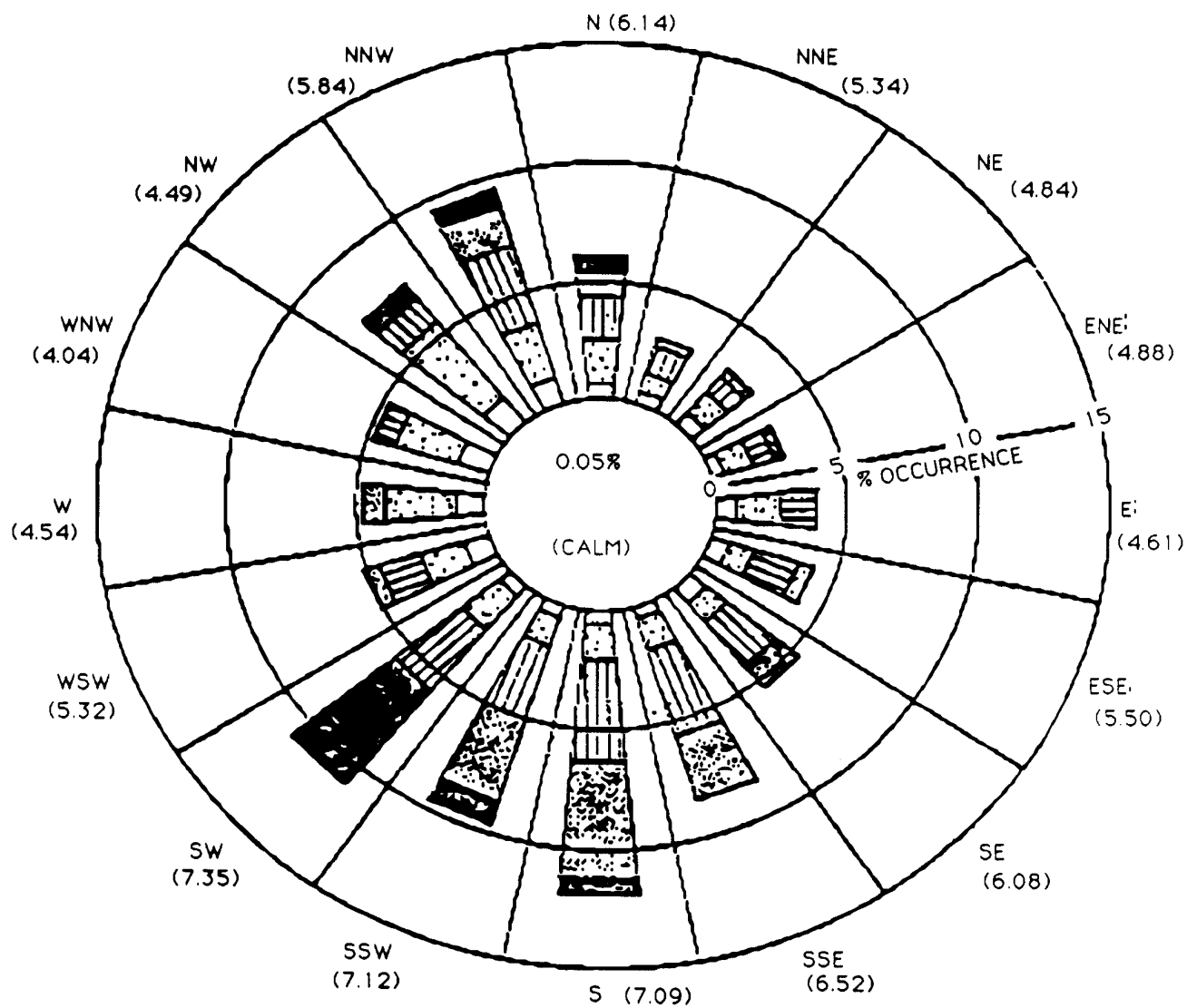


LEGEND:

(5.62) - MEAN WIND SPEED
(m/sec) FOR SECTOR

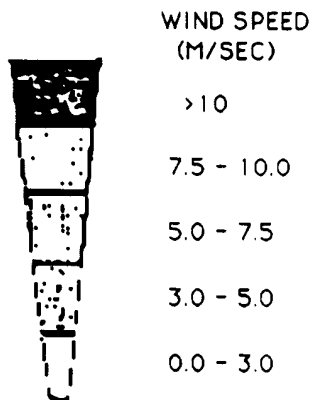


60 METER WIND FREQUENCY DISTRIBUTION - PALISADES SITE
JUNE 1 THROUGH AUGUST 31, 1978

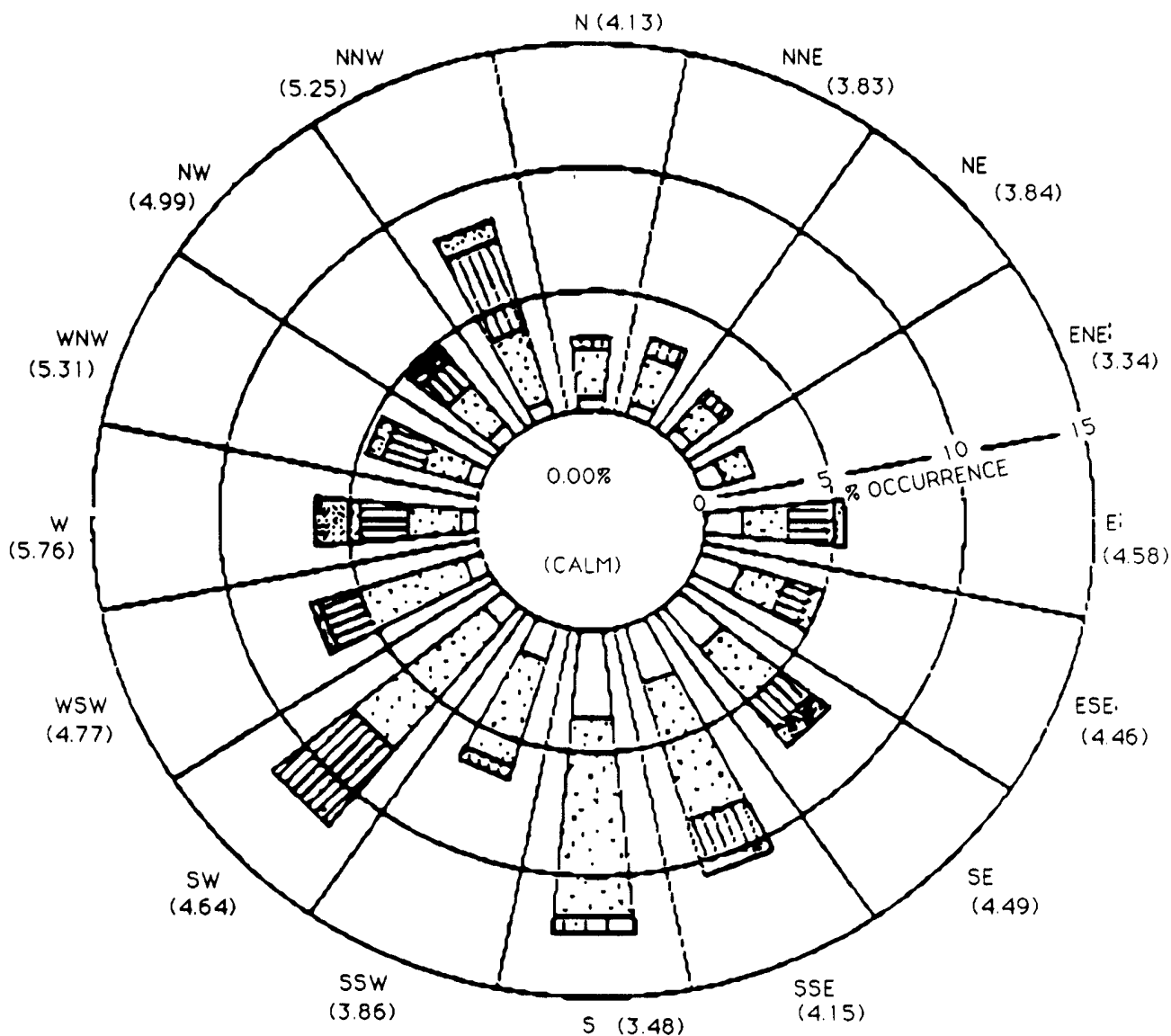


LEGEND:

(5.62) - MEAN WIND SPEED
(m/sec) FOR SECTOR

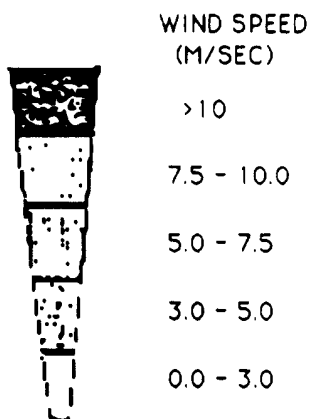


10 METER WIND FREQUENCY DISTRIBUTION - PALISADES SITE
SEPTEMBER 1 THROUGH NOVEMBER 30, 1978

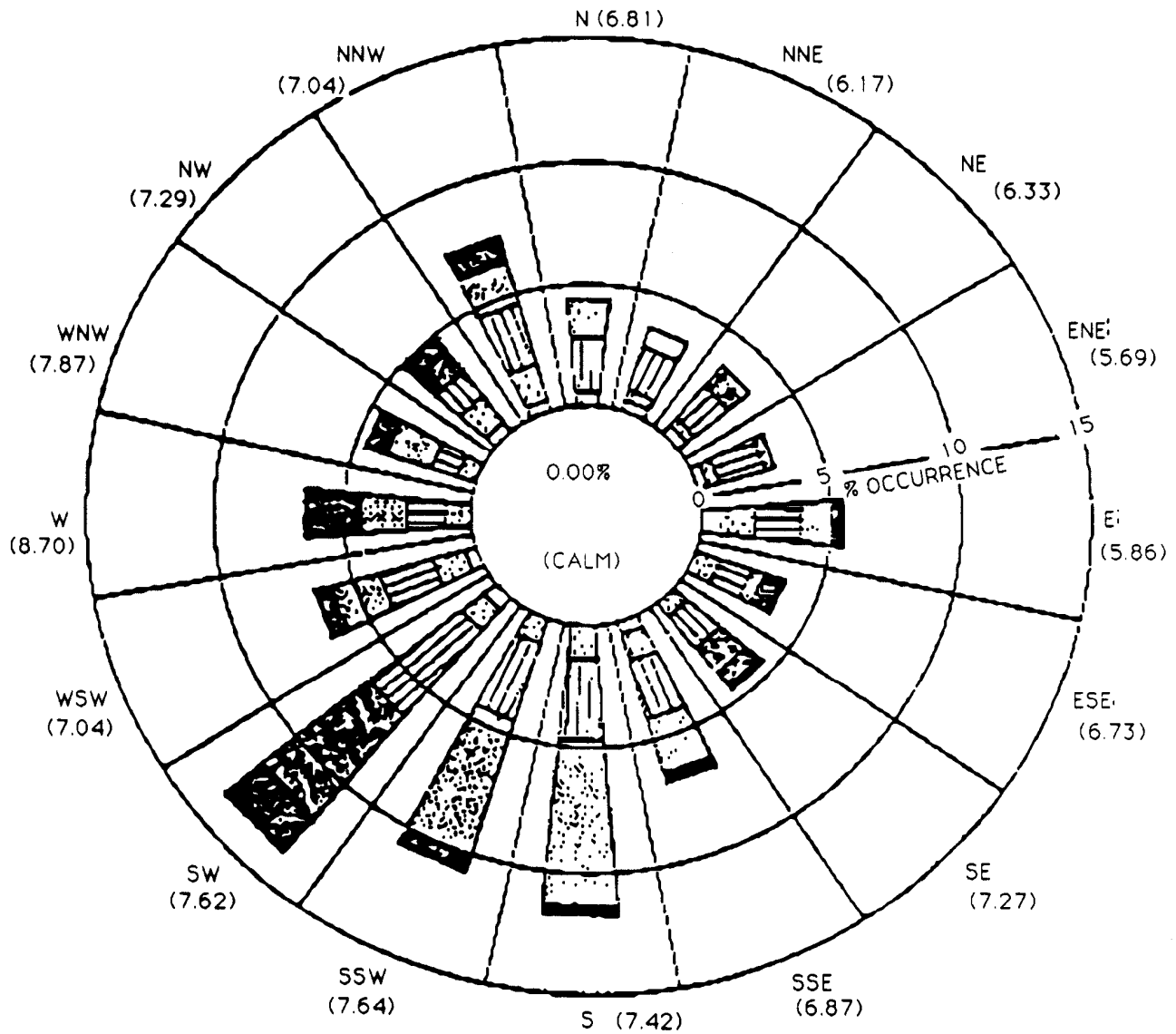


LEGEND:

(5.62) - MEAN WIND SPEED
(m/sec) FOR SECTOR

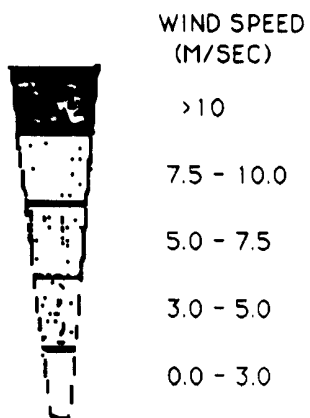


60 METER WIND FREQUENCY DISTRIBUTION - PALISADES SITE
SEPTEMBER 1 THROUGH NOVEMBER 30, 1978

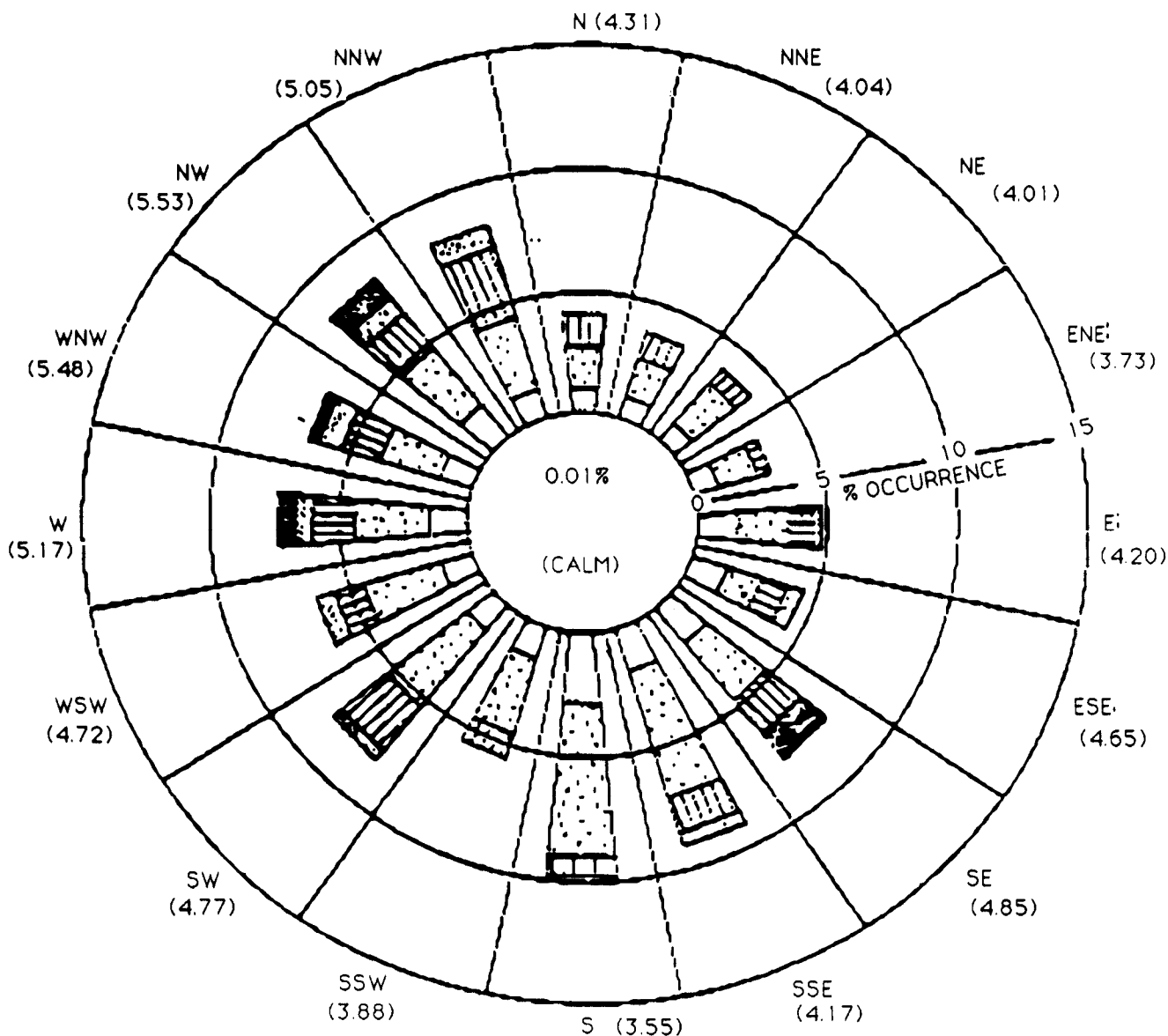


LEGEND:

(5.62) - MEAN WIND SPEED
(m/sec) FOR SECTOR

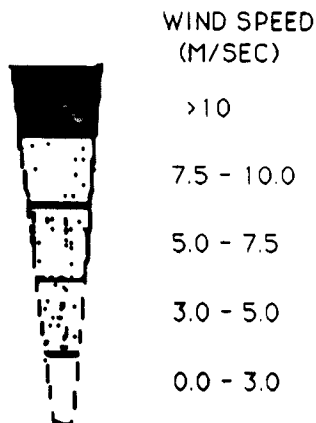


10 METER WIND FREQUENCY DISTRIBUTION - PALISADES SITE
DECEMBER 1, 1977 THROUGH NOVEMBER 30, 1978

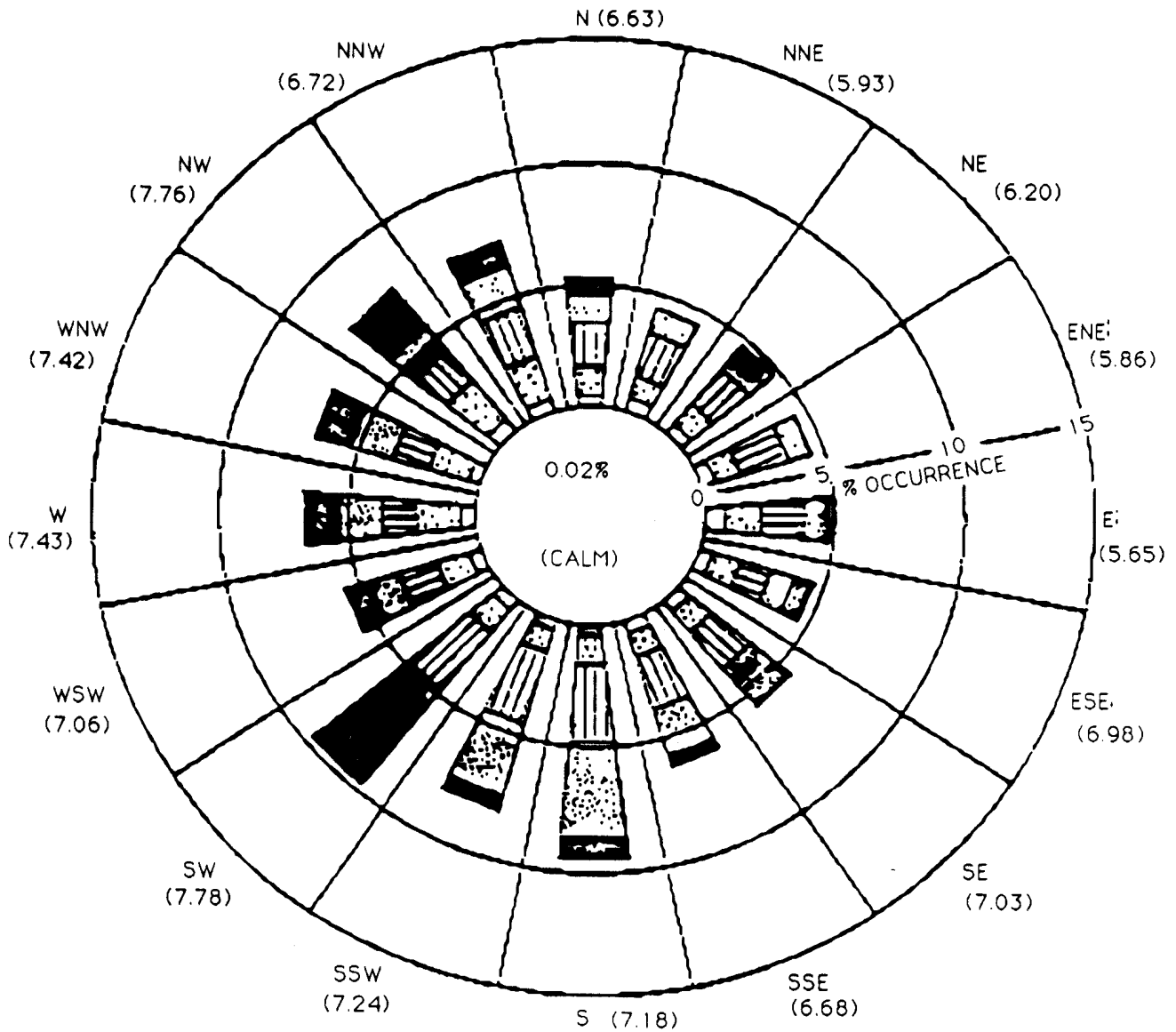


LEGEND:

(5.62) - MEAN WIND SPEED
(m/sec) FOR SECTOR



60 METER WIND FREQUENCY DISTRIBUTION - PALISADES SITE
DECEMBER 1, 1977 THROUGH NOVEMBER 30, 1978



LEGEND:

(5.62) - MEAN WIND SPEED
(m/sec) FOR SECTOR

