

From: [DeFord, Douglas K](#)
To: [Desotell, Lloyd](#)
Cc: [Bergeron, Marcel P](#); [Sunil Mehta](#); [Ross, Sherri R. \(HQ\)](#)
Subject: [External_Sender] Action Item 10-30.25
Date: Thursday, April 11, 2019 1:42:10 PM

Lloyd,

I got one of our engineers to do a quick survey of WMA C tank configuration drawings, for a rough list of equipment remaining in tanks. The photos (from the WIR) illustrate example tanks.

#####

General Retrieval Equipment:

- All retrieval pumps, whether electrically or hydraulically driven, are approximately 10" in diameter and 36' long from the riser flange down (designed to go about ½" above tank bottom).
- Standard sluicers are about 4" diameter and extend about 5-7' below the tank riser.
- Extended Reach Sluicers (ERS) are about 11" diameter and typically extend about 20' below the tank riser.
- Sample Sleeves are 3" diameter and extend about 15' below the tank riser.
- C-104 and the C-200 Series tanks have an Articulating Mast System (AMS). Actual dimensions are buried in a VI file, but I would estimate 10" diameter and length to reach the tank bottom.
- The C-105 Waste Accumulator Tank (WAT) is approximately 40" diameter by 7' in height. I don't know exactly how high above the tank bottom it is but it is in the top portion.

Other tank equipment:

- Several tanks have thermocouple trees or dip legs that are generally 3" diameter and conservatively extend close to the tank bottom.
- Most C-100 series tank drawings show a sludge pump in Riser 9 (42" riser); however, not all tanks actually have them. The ones that did usually had a significant amount of waste stuck to them, and would've been included in the final volume estimate. Further research is needed to identify them and their dimensions. I will not include them in the following list.

C-101

- 1 ERS (typically there are two but one was removed)
- 1 Retrieval Pump

C-102

- 2 ERS
- 1 Retrieval Pump
- 2 Dip legs

C-103, C-108

- 2 Standard sluicers

- 1 Retrieval Pump
- 1 Thermocouple

C-104

- 2 Standard sluicers
- 1 Retrieval Pump
- 2 Dip legs
- 1 AMS

C-105

- 2 ERS
- 1 Retrieval Pump
- 2 Dip legs
- Waste Accumulator Tank

C-106

- 2 Standard sluicers
- 1 Retrieval Pump
- 1 Thermocouple
- 1 Dip Tub
- 1 Failed Pump that is not a retrieval pump (assume to be no larger than a retrieval pump)

C-107

- 2 Thermocouples
- 1 MARS (I'd estimate triple the volume of a retrieval pump with all of the additional components)

C-109

- 2 Standard sluicers
- 1 Retrieval Pump
- 1 Sample Sleeve

C-110

- 2 Standard sluicers
- 1 Retrieval Pump
- 1 Thermocouple
- 1 FoldTrack vehicle and hydraulic hose

C-111

- 2 ERS
- 1 Retrieval Pump
- 1 Sample Sleeve

C-112

- 1 Standard sluicer
- 1 ERS
- 2 Thermocouples
- 1 Sample Sleeve

C-201, C-202, C-203, C-204

- 1 AMS

#####

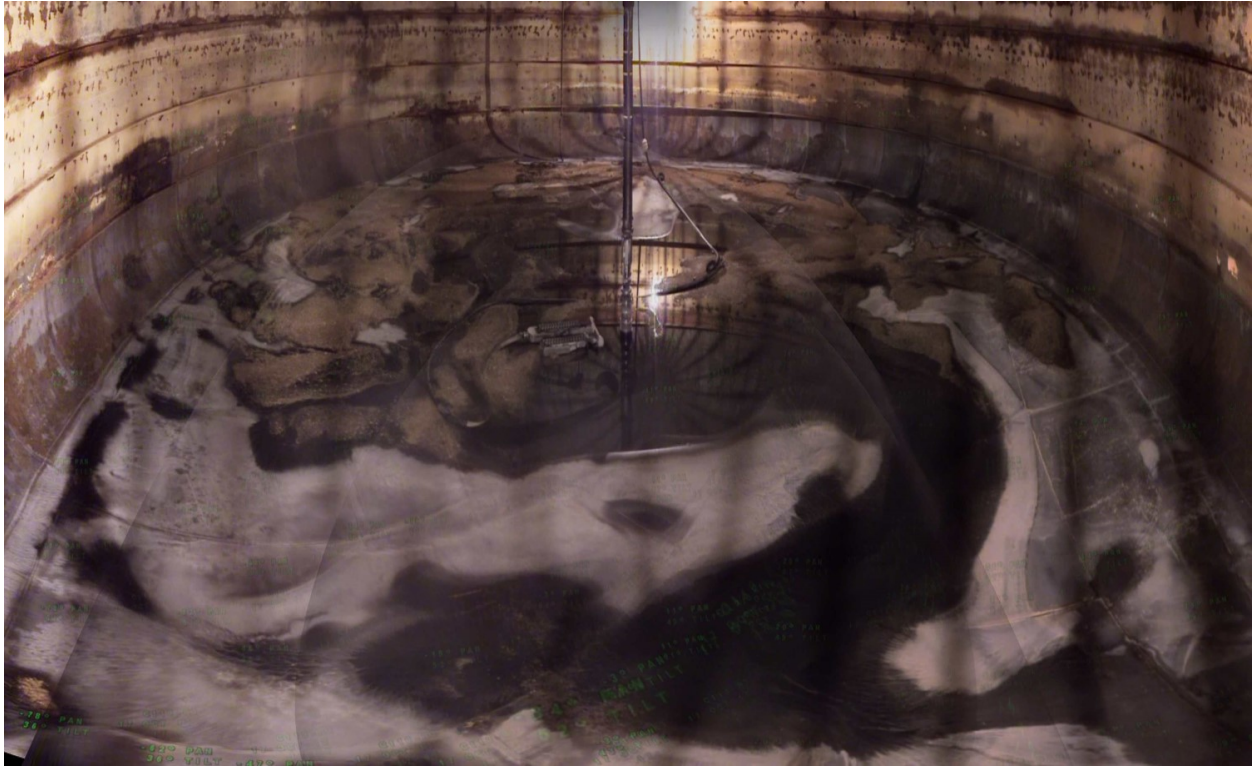
Let me know if this meets your needs for this action item.

Thanks,

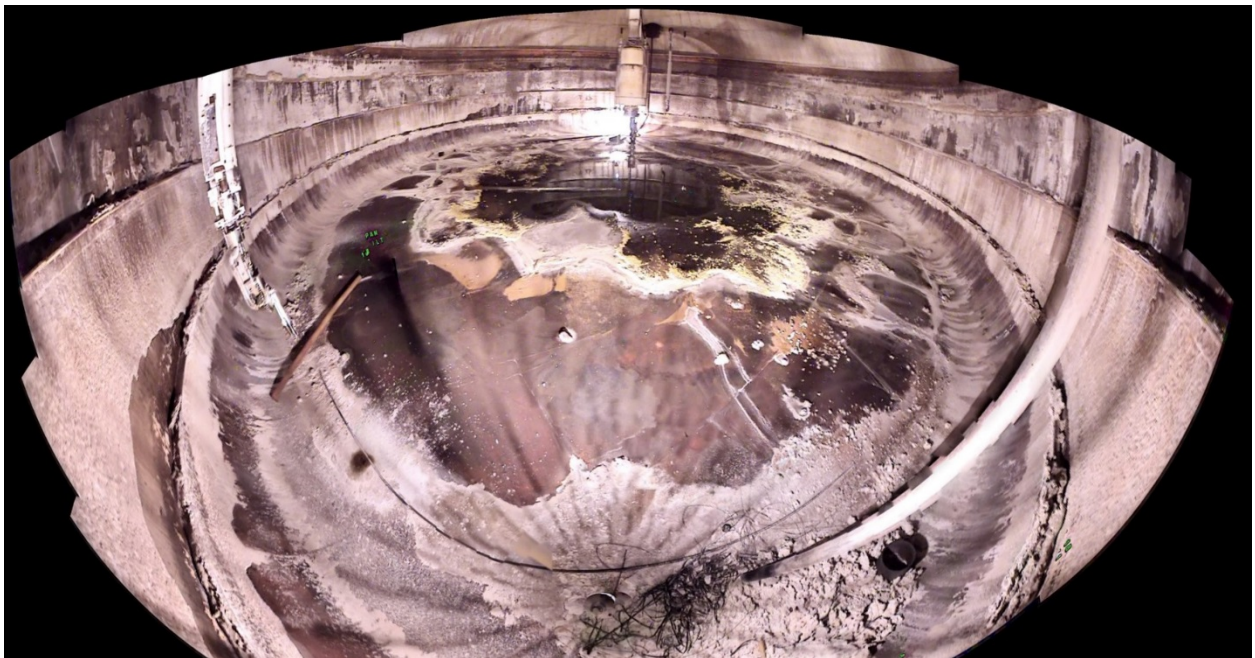
Doug DeFord, PE
SST Closure and Interim Measures
Office 509-373-5727
Mobile 509-528-2156



Contractor to the United States Department of Energy



Tank C-110



Tank C-105