

71-9314



AEA Technology
QSA Inc.
40 North Avenue
Burlington, MA 01803
Telephone (781) 272-2000
Telephone (800) 815-1383
Facsimile (781) 273-2216

13 July 2005

Mr. Shawn Williams
Licensing Section
Spent Fuel Project Office
Office of Nuclear Material Safety and Safeguards
U.S. Nuclear Regulatory Commission
11555 Rockville Pike
One White Flint
Rockville, MD 20852

Docket No.: 71-9314

Dear Mr. Williams:

As discussed with you, please find enclosed a revision to drawing R97608 which adds a notation to the drawing describing the use of "ref" for some of the dimensions specified on the drawing. Previously AEA Technology QSA, Inc. had identified "reference" dimensions on the descriptive drawings by enclosing the values in parentheses. Therefore for consistency, we have also enclosed revisions to these affected drawings which showed reference dimensions in the format requested for use on drawing R97608.

Should you have any additional questions or wish to discuss this submission after receipt please contact me as shown below. Again your assistance is greatly appreciated in this matter.

Sincerely,

Lori Podolak
Product Licensing Specialist
Regulatory Affairs Department
Ph: (781) 272-2000 ext 241
Fax: (781) 359-9191
Email: Lori.Podolak@aeat-qa.com

RA/QA Approval

Engineering Approval

13 Jul 05
Date
13 July 05
Date

Enclosed Drawings: R97608 Revision E
R976A through E Revisions D
R976F, R3056, R3078 & R1911 Revisions C

NMS501

5

4

3

2

1

D

D

C

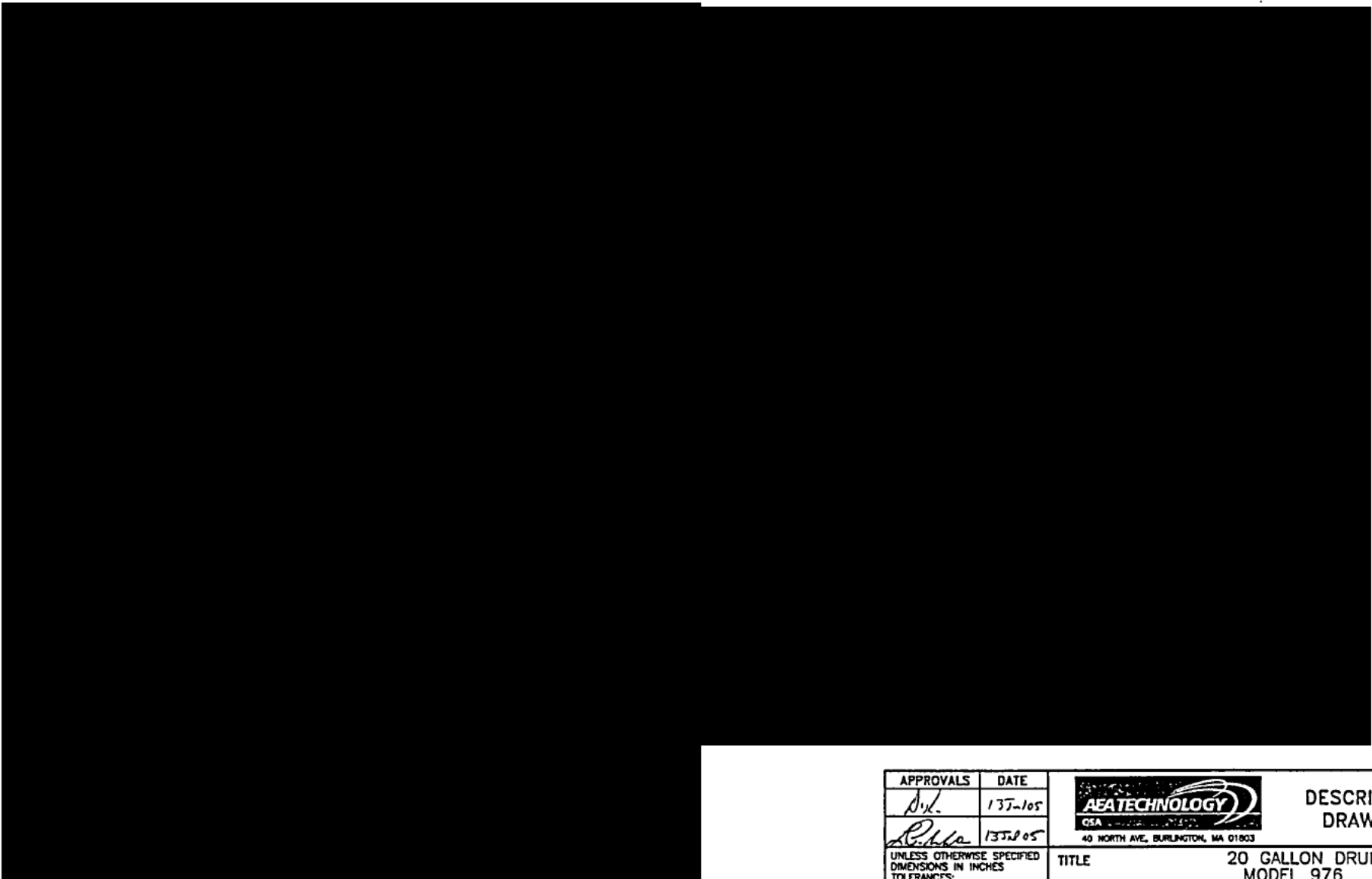
C

B

B

A

A



ERF#
1100

APPROVALS	DATE
<i>Dyk</i>	13J-105
<i>R. Ma</i>	13J205



DESCRIPTIVE
DRAWING

UNLESS OTHERWISE SPECIFIED
DIMENSIONS IN INCHES
TOLERANCES:
FRACTIONS ± 1/2
X.X ± 0.12
X.XX ± 0.08
X.XXX ± 0.020

TITLE		20 GALLON DRUM MODEL 976	
SIZE	DWG. NO.	R97608	
B	SCALE: NONE	SHEET 1 OF 1	REV E

5

4

3

2

1

5

4

3

2

1

D

D

C

C

B

B

A

A

SECTION B-B

9	NA	4	SCREW, SS, 3/8-16 x 3/4 LONG
8	NA	1	STEEL FIREPROOF TYPE B LABEL
7	NA	1	SEAL WIRE Ø.02 MIN, STEEL
6	RCLM009	1	CLAMP, SS BAND
5	R97616	1	BOTTOM OUTER CORK INSERT
4	R97615	1	TOP OUTER CORK INSERT
3	R97608	1	LID, FOR 20 GAL DRUM, 16GA SS
2	R97608	1	DRUM, 20 GAL, 16GA SS
1	R85590	1	MODEL 855 SHIELD CONTAINER

ITEM NO.	DRWNG NO.	QTY.	DESCRIPTION
----------	-----------	------	-------------

APPROVALS	DATE
<i>[Signature]</i>	135-105
<i>[Signature]</i>	135-105



DESCRIPTIVE DRAWING

UNLESS OTHERWISE SPECIFIED
DIMENSIONS IN INCHES
TOLERANCES:
FRACTIONS ± 1/8
X.X ± 0.12
X.XX ± 0.08
X.XXX ± 0.020

TITLE 976A TYPE B PACKAGE WITH 855 SHIELD CONTAINER		
SIZE B	DWG. NO. R976A	REV D
SCALE: NONE		SHEET 1 OF 1

ERF#
1100

- NOTES:
1. ALL PERSONNEL QUALIFICATIONS, WELDING AND EXAMINATION PROCEDURES ARE IN ACCORDANCE WITH THE REQUIREMENTS OF THE AWS, ASME OR BRITISH STANDARD WELDING CODES CURRENT AT THE TIME OF FABRICATION AND INSPECTION.
 2. NOTES APPLY TO ALL PAGES.
 3. TORQUE CLAMP BOLT TO 10FT*LBS (+2/-0). THIS IS EQUIVALENT TO A .75-1.25" GAP BETWEEN THE CLAMP BAND SIDES.
 4. MAXIMUM PACKAGE WEIGHT - 300 lbs.
 5. ALL HARDWARE TO MEET ASME B18 STANDARDS.
 6. "REF" DENOTES A REFERENCE DIMENSION, PROVIDED FOR GENERAL INFORMATION ONLY. ACTUAL DIMENSION ON FINISHED ITEM MAY FALL OUTSIDE TOLERANCES SHOWN ON DRAWING.

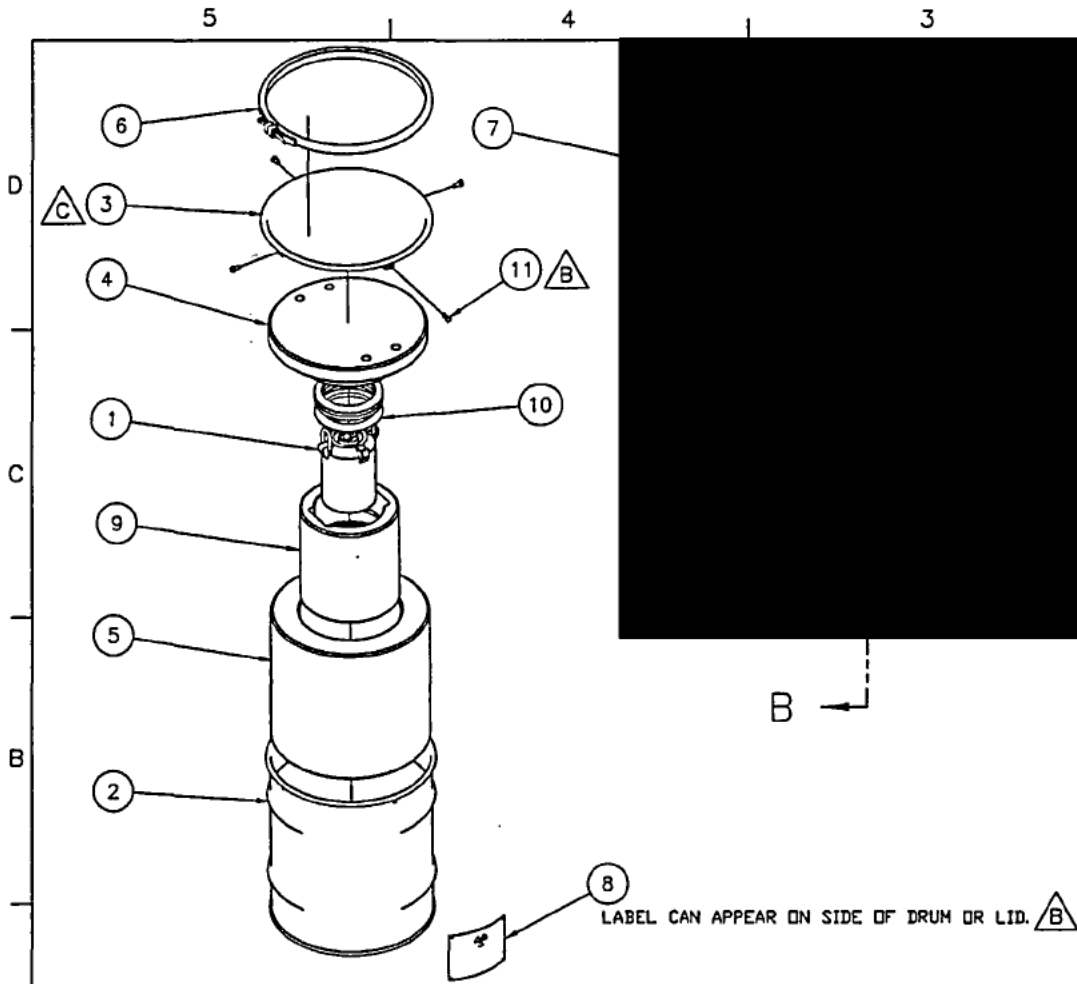
5

4

3

2


1

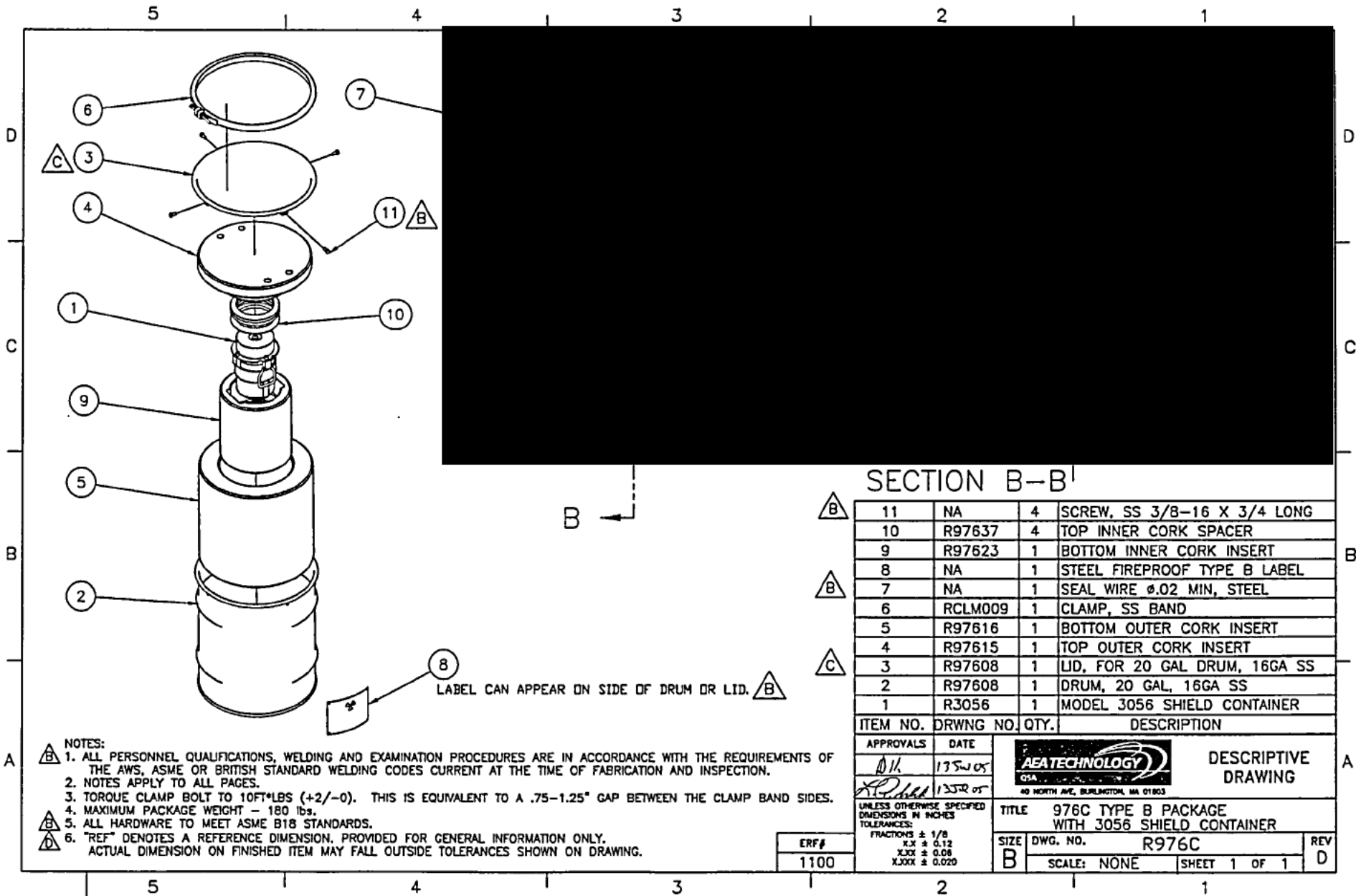


SECTION B-B

ITEM NO.	DRWG NO.	QTY.	DESCRIPTION
11	NA	4	SCREW, SS 3/8-16 X 3/4 LONG
10	R97637	4	TOP INNER CORK SPACER
9	R97623	1	BOTTOM INNER CORK INSERT
8	NA	1	STEEL FIREPROOF TYPE B LABEL
7	NA	1	SEAL WIRE ϕ .02 MIN, STEEL
6	RCLM009	1	CLAMP, SS BAND
5	R97616	1	BOTTOM OUTER CORK INSERT
4	R97615	1	TOP OUTER CORK INSERT
3	R97608	1	LID, FOR 20 GAL DRUM, 16GA SS
2	R97608	1	DRUM, 20 GAL, 16GA SS
1	R3015	1	MODEL 3015 SHIELD CONTAINER

- NOTES:
1. ALL PERSONNEL QUALIFICATIONS, WELDING AND EXAMINATION PROCEDURES ARE IN ACCORDANCE WITH THE REQUIREMENTS OF THE AWS, ASME OR BRITISH STANDARD WELDING CODES CURRENT AT THE TIME OF FABRICATION AND INSPECTION.
 2. NOTES APPLY TO ALL PAGES.
 3. TORQUE CLAMP BOLT TO 10FT*lbs (+2/-0). THIS IS EQUIVALENT TO A .75-1.25" GAP BETWEEN THE CLAMP BAND SIDES.
 4. MAXIMUM PACKAGE WEIGHT - 180 lbs.
 5. ALL HARDWARE TO MEET ASME B18 STANDARDS.
 6. "REF" DENOTES A REFERENCE DIMENSION. PROVIDED FOR GENERAL INFORMATION ONLY. ACTUAL DIMENSION ON FINISHED ITEM MAY FALL OUTSIDE TOLERANCES SHOWN ON DRAWING.

APPROVALS	DATE	 40 NORTH AVE. BURLINGTON, MA 01803	DESCRIPTIVE DRAWING
<i>Neil</i> <i>R. Williams</i>	135-105 137-05		
UNLESS OTHERWISE SPECIFIED DIMENSIONS IN INCHES TOLERANCES: FRACTIONS \pm 1/8 .XX \pm 0.12 .XXX \pm 0.06 .XXXX \pm 0.020		TITLE 976B TYPE B PACKAGE WITH 3015 SHIELD CONTAINER	REV D
ERF# 1100	SIZE DWG. NO. R976B SCALE: NONE	SHEET 1 OF 1	



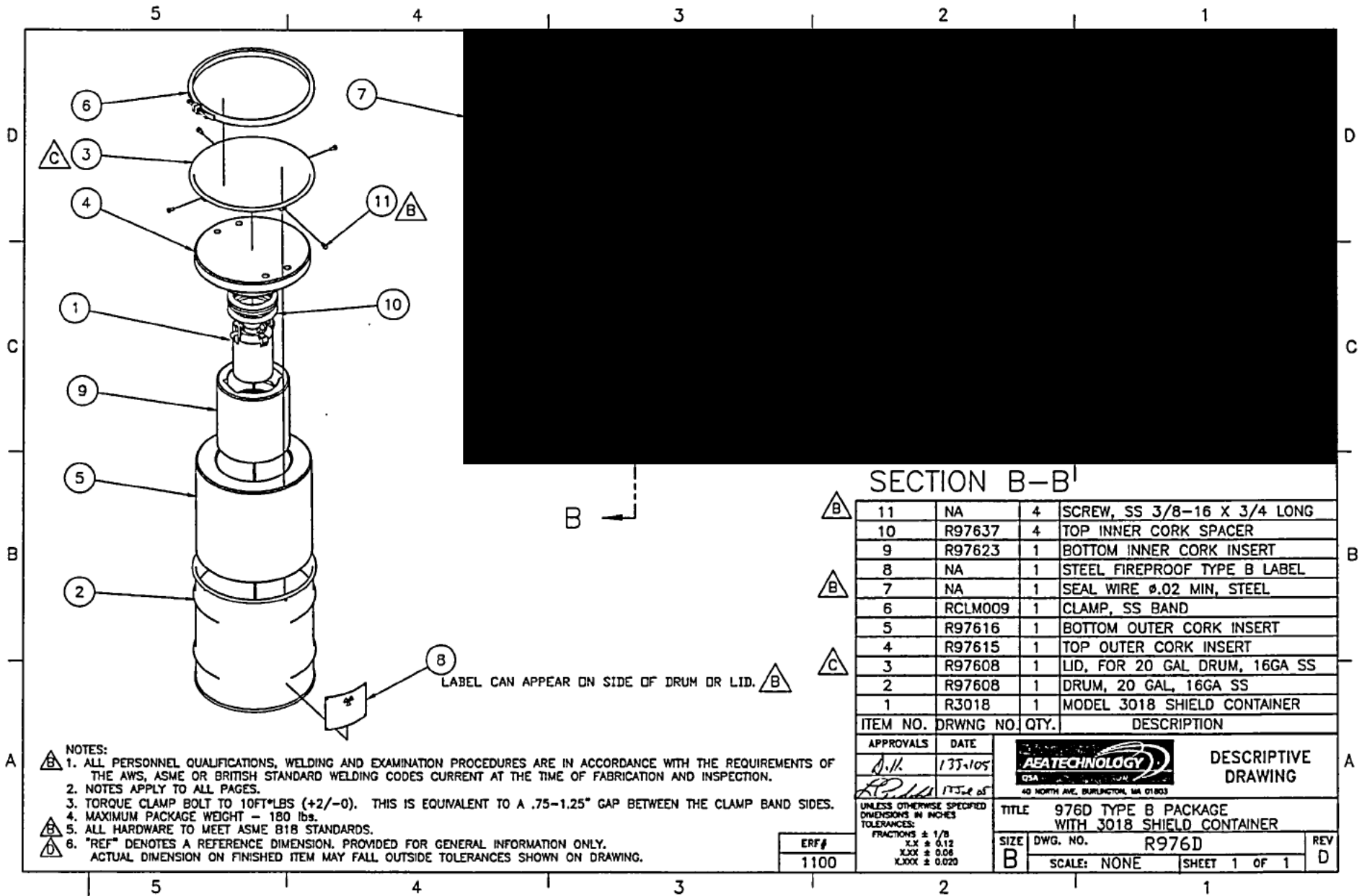
SECTION B-B'

ITEM NO.	DRWNG NO.	QTY.	DESCRIPTION
11	NA	4	SCREW, SS 3/8-16 X 3/4 LONG
10	R97637	4	TOP INNER CORK SPACER
9	R97623	1	BOTTOM INNER CORK INSERT
8	NA	1	STEEL FIREPROOF TYPE B LABEL
7	NA	1	SEAL WIRE ϕ .02 MIN, STEEL
6	RCLM009	1	CLAMP, SS BAND
5	R97616	1	BOTTOM OUTER CORK INSERT
4	R97615	1	TOP OUTER CORK INSERT
3	R97608	1	LID, FOR 20 GAL DRUM, 16GA SS
2	R97608	1	DRUM, 20 GAL, 16GA SS
1	R3056	1	MODEL 3056 SHIELD CONTAINER

- NOTES:
1. ALL PERSONNEL QUALIFICATIONS, WELDING AND EXAMINATION PROCEDURES ARE IN ACCORDANCE WITH THE REQUIREMENTS OF THE AWS, ASME OR BRITISH STANDARD WELDING CODES CURRENT AT THE TIME OF FABRICATION AND INSPECTION.
 2. NOTES APPLY TO ALL PAGES.
 3. TORQUE CLAMP BOLT TO 10FT*LBS (+2/-0). THIS IS EQUIVALENT TO A .75-1.25" GAP BETWEEN THE CLAMP BAND SIDES.
 4. MAXIMUM PACKAGE WEIGHT - 180 lbs.
 5. ALL HARDWARE TO MEET ASME B18 STANDARDS.
 6. "REF" DENOTES A REFERENCE DIMENSION, PROVIDED FOR GENERAL INFORMATION ONLY. ACTUAL DIMENSION ON FINISHED ITEM MAY FALL OUTSIDE TOLERANCES SHOWN ON DRAWING.

ERF#
1100

APPROVALS	DATE	 40 NORTH AVE, BURLINGTON, MA 01803	DESCRIPTIVE DRAWING
<i>[Signature]</i>	175W 05		
UNLESS OTHERWISE SPECIFIED DIMENSIONS IN INCHES TOLERANCES: FRACTIONS \pm 1/8 X.X \pm 0.12 X.XX \pm 0.08 X.XXX \pm 0.020		TITLE 976C TYPE B PACKAGE WITH 3056 SHIELD CONTAINER	
SIZE	DWG. NO.	REV	
B	R976C		D
SCALE: NONE		SHEET 1 OF 1	



SECTION B-B'

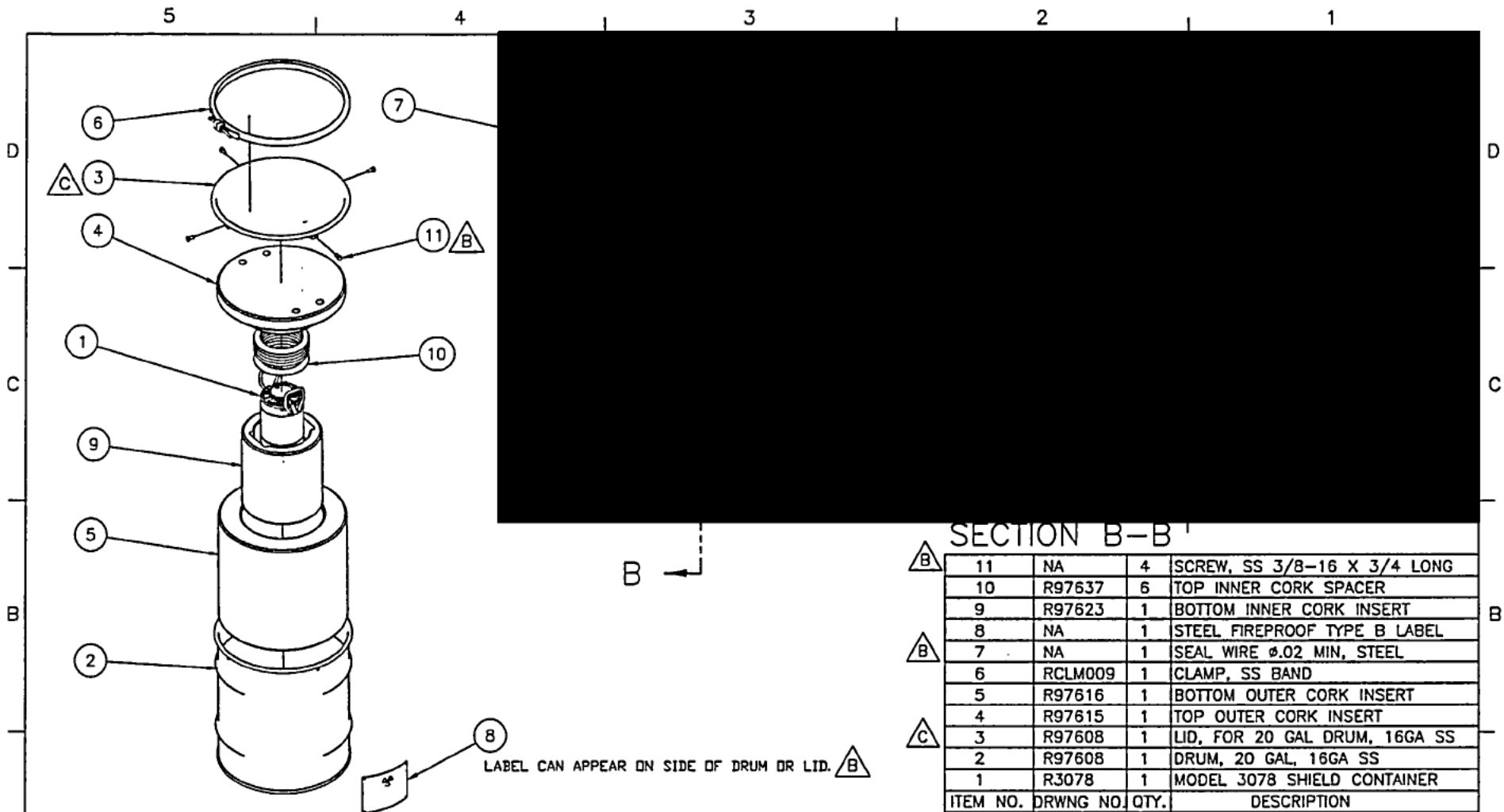
ITEM NO.	DRWNG NO.	QTY.	DESCRIPTION
11	NA	4	SCREW, SS 3/8-16 X 3/4 LONG
10	R97637	4	TOP INNER CORK SPACER
9	R97623	1	BOTTOM INNER CORK INSERT
8	NA	1	STEEL FIREPROOF TYPE B LABEL
7	NA	1	SEAL WIRE ϕ .02 MIN, STEEL
6	RCLM009	1	CLAMP, SS BAND
5	R97616	1	BOTTOM OUTER CORK INSERT
4	R97615	1	TOP OUTER CORK INSERT
3	R97608	1	LID, FOR 20 GAL DRUM, 16GA SS
2	R97608	1	DRUM, 20 GAL, 16GA SS
1	R3018	1	MODEL 3018 SHIELD CONTAINER

APPROVALS	DATE	 40 NORTH AVE, BURLINGTON, MA 01803	DESCRIPTIVE DRAWING
<i>D.H.</i>	1/31/05		
<i>R.P.L.</i>	1/31/05	TITLE 976D TYPE B PACKAGE WITH 3018 SHIELD CONTAINER	
UNLESS OTHERWISE SPECIFIED DIMENSIONS IN INCHES TOLERANCES: FRACTIONS \pm 1/8 .XX \pm 0.12 .XXX \pm 0.08 .XXXX \pm 0.020		SIZE DWG. NO. R976D B SCALE: NONE	REV D SHEET 1 OF 1

ERF#
1100

- NOTES:
1. ALL PERSONNEL QUALIFICATIONS, WELDING AND EXAMINATION PROCEDURES ARE IN ACCORDANCE WITH THE REQUIREMENTS OF THE AWS, ASME OR BRITISH STANDARD WELDING CODES CURRENT AT THE TIME OF FABRICATION AND INSPECTION.
 2. NOTES APPLY TO ALL PAGES.
 3. TORQUE CLAMP BOLT TO 10FT*lbs (+2/-0). THIS IS EQUIVALENT TO A .75-1.25" GAP BETWEEN THE CLAMP BAND SIDES.
 4. MAXIMUM PACKAGE WEIGHT - 180 lbs.
 5. ALL HARDWARE TO MEET ASME B1B STANDARDS.
 6. "REF" DENOTES A REFERENCE DIMENSION. PROVIDED FOR GENERAL INFORMATION ONLY. ACTUAL DIMENSION ON FINISHED ITEM MAY FALL OUTSIDE TOLERANCES SHOWN ON DRAWING.

8 LABEL CAN APPEAR ON SIDE OF DRUM OR LID.

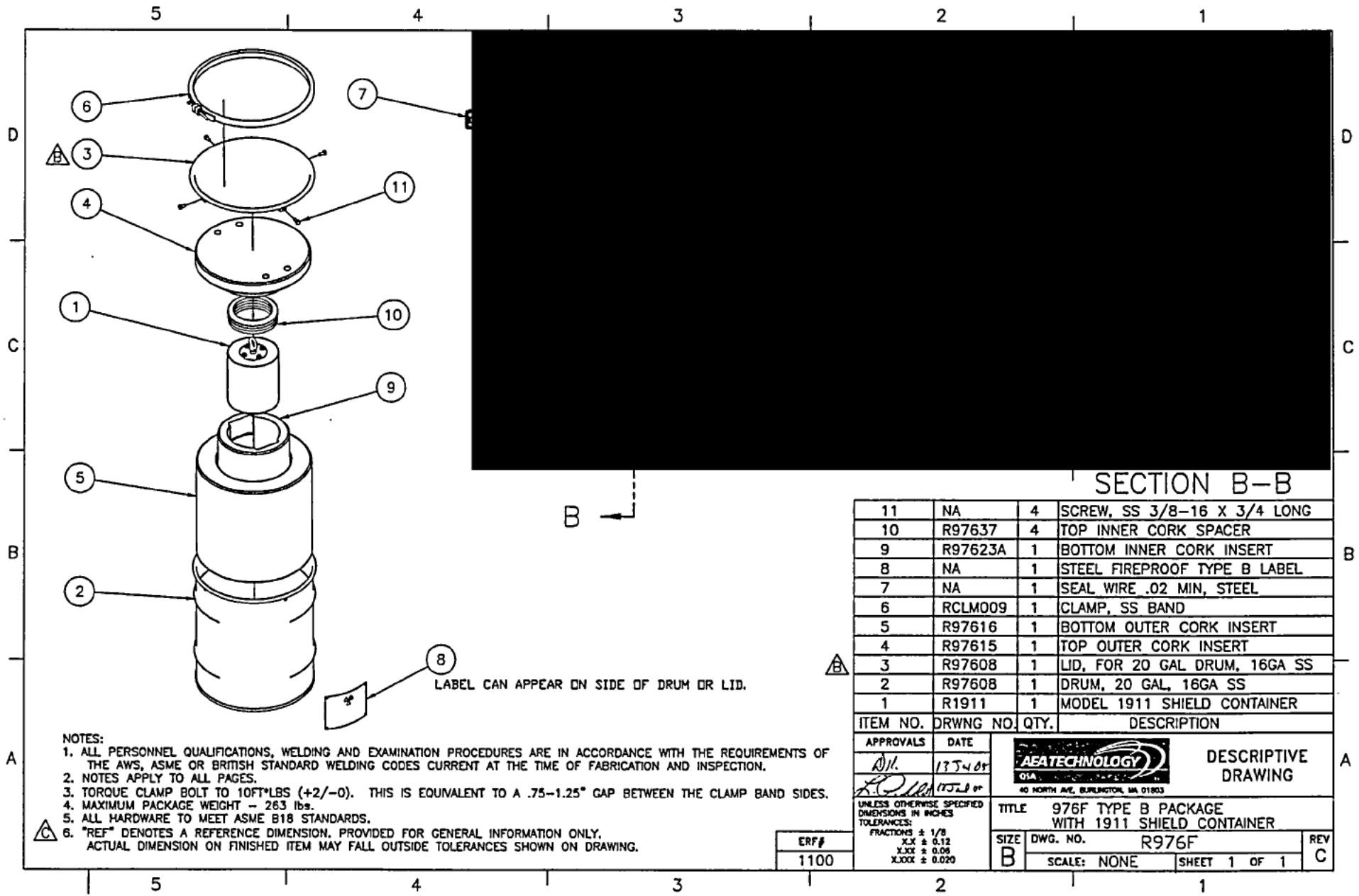


- NOTES:**
1. ALL PERSONNEL QUALIFICATIONS, WELDING AND EXAMINATION PROCEDURES ARE IN ACCORDANCE WITH THE REQUIREMENTS OF THE AWS, ASME OR BRITISH STANDARD WELDING CODES CURRENT AT THE TIME OF FABRICATION AND INSPECTION.
 2. NOTES APPLY TO ALL PAGES.
 3. TORQUE CLAMP BOLT TO 10FT*LBS (+2/-0). THIS IS EQUIVALENT TO A .75-1.25" GAP BETWEEN THE CLAMP BAND SIDES.
 4. MAXIMUM PACKAGE WEIGHT - 212 lbs.
 5. ALL HARDWARE TO MEET ASME B18 STANDARDS.
 6. "REF" DENOTES A REFERENCE DIMENSION. PROVIDED FOR GENERAL INFORMATION ONLY.
 7. "ACTUAL DIMENSION ON FINISHED ITEM MAY FALL OUTSIDE TOLERANCES SHOWN ON DRAWING."

SECTION B-B


ITEM NO.	DRWNG NO.	QTY.	DESCRIPTION
11	NA	4	SCREW, SS 3/8-16 X 3/4 LONG
10	R97637	6	TOP INNER CORK SPACER
9	R97623	1	BOTTOM INNER CORK INSERT
8	NA	1	STEEL FIREPROOF TYPE B LABEL
7	NA	1	SEAL WIRE ϕ .02 MIN, STEEL
6	RCLM009	1	CLAMP, SS BAND
5	R97616	1	BOTTOM OUTER CORK INSERT
4	R97615	1	TOP OUTER CORK INSERT
3	R97608	1	LID, FOR 20 GAL DRUM, 16GA SS
2	R97608	1	DRUM, 20 GAL, 16GA SS
1	R3078	1	MODEL 3078 SHIELD CONTAINER

APPROVALS	DATE	 40 NORTH AVE, BURLINGTON, MA 01803	DESCRIPTIVE DRAWING
<i>[Signature]</i>	13J-105		
UNLESS OTHERWISE SPECIFIED DIMENSIONS IN INCHES TOLERANCES: FRACTIONS \pm 1/8 X.X \pm 0.12 X.XX \pm 0.08 X.XXX \pm 0.020		TITLE 976E TYPE B PACKAGE WITH 3078 SHIELD CONTAINER	
ERF#	1100	SIZE	REV
		B	D
		SCALE: NONE	SHEET 1 OF 1



SECTION B-B

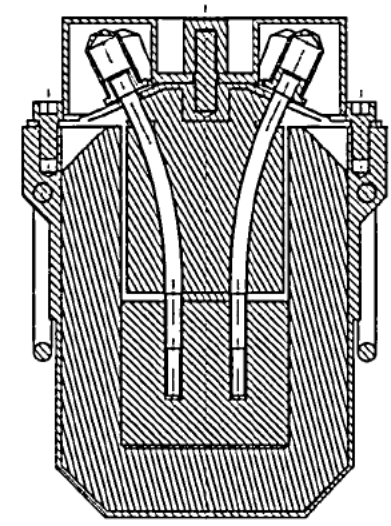
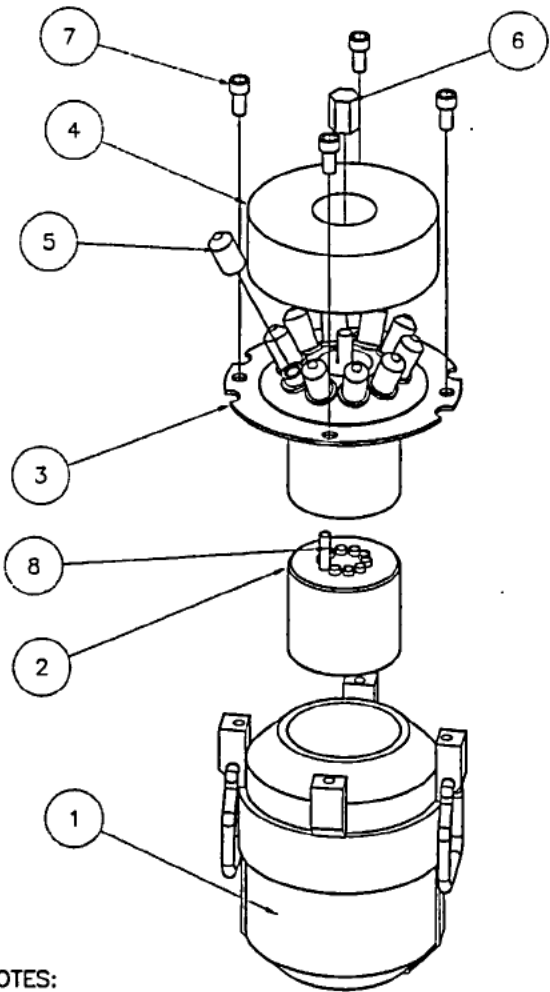
11	NA	4	SCREW, SS 3/8-16 X 3/4 LONG
10	R97637	4	TOP INNER CORK SPACER
9	R97623A	1	BOTTOM INNER CORK INSERT
8	NA	1	STEEL FIREPROOF TYPE B LABEL
7	NA	1	SEAL WIRE .02 MIN, STEEL
6	RCLM009	1	CLAMP, SS BAND
5	R97616	1	BOTTOM OUTER CORK INSERT
4	R97615	1	TOP OUTER CORK INSERT
3	R97608	1	LID, FOR 20 GAL DRUM, 16GA SS
2	R97608	1	DRUM, 20 GAL, 16GA SS
1	R1911	1	MODEL 1911 SHIELD CONTAINER

ITEM NO.	DRWNG NO.	QTY.	DESCRIPTION
APPROVALS		DATE	 DESCRIPTIVE DRAWING <small>40 NORTH AVE. BURLINGTON, MA 01803</small>
<i>[Signature]</i>		11/24/01	
<i>[Signature]</i>		11/24/01	
<small>UNLESS OTHERWISE SPECIFIED DIMENSIONS IN INCHES</small>			TITLE 976F TYPE B PACKAGE WITH 1911 SHIELD CONTAINER
<small>TOLERANCES:</small> FRACTIONS ± 1/8 X.X ± 0.12 X.XX ± 0.06 X.XXX ± 0.020		SIZE B DWG. NO. R976F SCALE: NONE	REV C SHEET 1 OF 1

ERF#
1100

- NOTES:
1. ALL PERSONNEL QUALIFICATIONS, WELDING AND EXAMINATION PROCEDURES ARE IN ACCORDANCE WITH THE REQUIREMENTS OF THE AWS, ASME OR BRITISH STANDARD WELDING CODES CURRENT AT THE TIME OF FABRICATION AND INSPECTION.
 2. NOTES APPLY TO ALL PAGES.
 3. TORQUE CLAMP BOLT TO 10FT*lbs (+2/-0). THIS IS EQUIVALENT TO A .75--1.25° GAP BETWEEN THE CLAMP BAND SIDES.
 4. MAXIMUM PACKAGE WEIGHT - 263 lbs.
 5. ALL HARDWARE TO MEET ASME B18 STANDARDS.
 6. "REF" DENOTES A REFERENCE DIMENSION. PROVIDED FOR GENERAL INFORMATION ONLY. ACTUAL DIMENSION ON FINISHED ITEM MAY FALL OUTSIDE TOLERANCES SHOWN ON DRAWING.

LABEL CAN APPEAR ON SIDE OF DRUM OR LID.



SECTION A-A

NOTES:
 1. ALL PERSONNEL QUALIFICATIONS, WELDING AND EXAMINATION PROCEDURES ARE IN ACCORDANCE WITH THE REQUIREMENTS OF THE AWS, ASME OR BRITISH STANDARD WELDING CODES CURRENT AT THE TIME OF FABRICATION AND INSPECTION. △ B
 2. NOTES APPLY TO ALL PAGES.
 3. MAXIMUM WEIGHT = 104 lbs.
 4. ALL HARDWARE TO MEET ASME B18 STANDARDS. △ B
 5. "REF" DENOTES A REFERENCE DIMENSION. PROVIDED FOR GENERAL INFORMATION ONLY. ACTUAL DIMENSION ON FINISHED ITEM MAY FALL OUTSIDE TOLERANCES SHOWN ON DRAWING. △ C

8	10	LOWER INSERT TUBE, SS
7	4	M10 X 20mm LG SOCKET HEAD SCREW, SS
6	1	RETAINING NUT, SS
5	10	CAP NUT
4	1	TOP HAT, SS
3	1	UPPER INSERT, LEAD INSIDE SS
2	1	LOWER INSERT, DU
1	1	LEAD POT ASSY

ITEM NO.	QTY.	DESCRIPTION
APPROVALS		DATE
		13 JUL 05
		13 JUL 05
<small>UNLESS OTHERWISE SPECIFIED DIMENSIONS IN INCHES TOLERANCES:</small> FRACTIONS ± 1/8 X.X ± 0.12 X.XX ± 0.05 X.XXX ± 0.020		 <small>40 NORTH AVE. BURLINGTON, MA 01803</small>
TITLE		MODEL 3056 SHIELD CONTAINER TOP LEVEL ASSY
SIZE	DWG. NO.	R3056
B	SCALE:	NA
SHEET		1 OF 4
REV		C

ERF#	1100
------	------

5

4

3

2

1

D

D

C

C

B

B

A

A



DESCRIPTIVE
DRAWING

UNLESS OTHERWISE SPECIFIED
DIMENSIONS IN INCHES
TOLERANCES:

FRACTIONS ± 1/8
X.X ± 0.12
X.XX ± 0.06
X.XXX ± 0.020

TITLE MODEL 3056 SHIELD CONTAINER
TOP LEVEL ASSY

SIZE B	DWG. NO.	R3056	REV C
	SCALE:	NA	

5

4

3

2

1

5

4

3

2

1

D

C

B

A



DESCRIPTIVE
DRAWING

TITLE MODEL 3056 SHIELD CONTAINER
TOP LEVEL ASSY

SIZE	DWG. NO.	R3056	REV
B	SCALE:	NA	C
		SHEET 3 OF 4	

5

4

3

2

1

5

4

3

2

1

D

C

B

A



DESCRIPTIVE
DRAWING

MATERIAL: SST

UNLESS OTHERWISE SPECIFIED
DIMENSIONS IN INCHES
TOLERANCES:
FRACTIONS ± 1/8
X.X ± 0.12
X.XX ± 0.06
X.XXX ± 0.020

TITLE MODEL 3056 SHIELD CONTAINER
TOP LEVEL ASSY

ERF#
1100

SIZE B	DWG. NO. R3056	SCALE: NA	SHEET 4 OF 4
------------------	-------------------	-----------	--------------

REV C

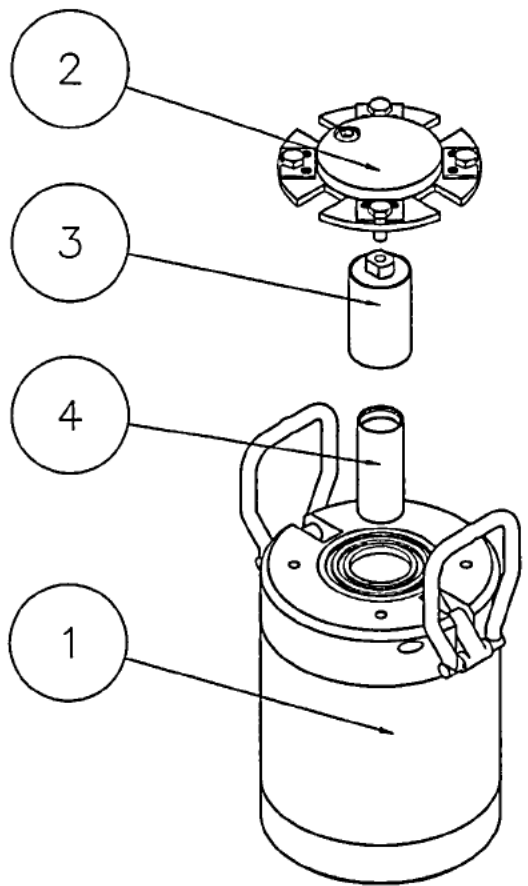
5

4

3

2


1



- NOTES:
- 1. ALL PERSONNEL QUALIFICATIONS, WELDING AND EXAMINATION PROCEDURES ARE IN ACCORDANCE WITH THE REQUIREMENTS OF THE AWS, ASME OR BRITISH STANDARD WELDING CODES CURRENT AT THE TIME OF FABRICATION AND INSPECTION.
 - 2. NOTES APPLY TO ALL PAGES.
 - 3. MAXIMUM WEIGHT = 136 lbs.
 - 4. MAXIMUM DU WEIGHT = 113 lbs.
 - 5. ALL HARDWARE TO MEET ASME B18 STANDARDS.
 - 6. "REF" DENOTES A REFERENCE DIMENSION. PROVIDED FOR GENERAL INFORMATION ONLY. ACTUAL DIMENSION ON FINISHED ITEM MAY FALL OUTSIDE TOLERANCES SHOWN ON DRAWING.

ERF#
1100

ITEM NO.	QTY.	DESCRIPTION
3	1	DU PLUG, MAX WEIGHT OF DU = 2.8 lbs.
2	1	POT LID ASSY
1	1	DU POT ASSY, MAX WIEGHT OF DU = 110 lbs.

APPROVALS	DATE	 DESCRIPTIVE DRAWING
<i>Nil.</i>	13 Jun 105	
<i>A. P. Lee</i>	13 Jun 05	

UNLESS OTHERWISE SPECIFIED DIMENSIONS IN INCHES TOLERANCES:
 FRACTIONS ± 1/8
 X.X ± 0.12
 X.XX ± 0.06
 X.XXX ± 0.020

TITLE		MODEL 3078 SHIELD CONTAINER TOP LEVEL ASSEMBLY	
SIZE	DWG. NO.	R3078	
B	SCALE:	NA	SHEET 1 OF 4
			REV C

5

4

3

2

1

D

C

B

A



DESCRIPTIVE
DRAWING

TITLE MODEL 3078 SHIELD CONTAINER
TOP LEVEL ASSEMBLY

SIZE B	DWG. NO.	R3078	REV C
	SCALE:	-	

5

4

3

2

1

5

4

3

2

1

D

D

C

C

B

B

A

A



DESCRIPTIVE
DRAWING

TITLE MODEL 3078 SHIELD CONTAINER
TOP LEVEL ASSEMBLY

SIZE	DWG. NO.	R3078	REV
B	SCALE:	-	C
		SHEET 3 OF 4	

5

4

3

2

1

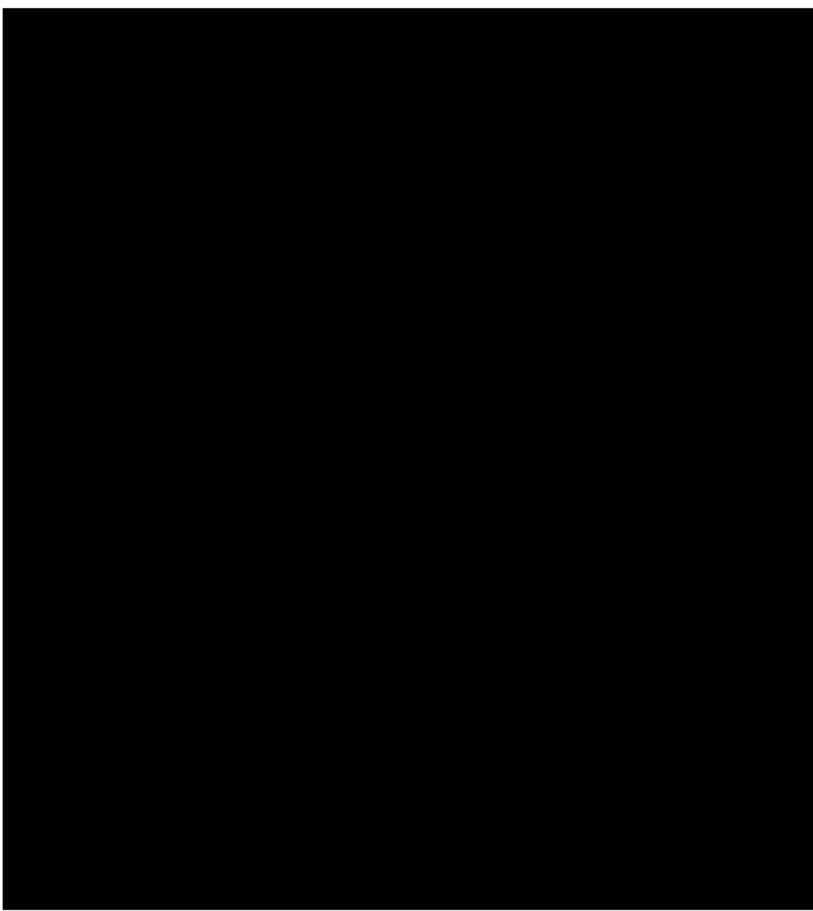
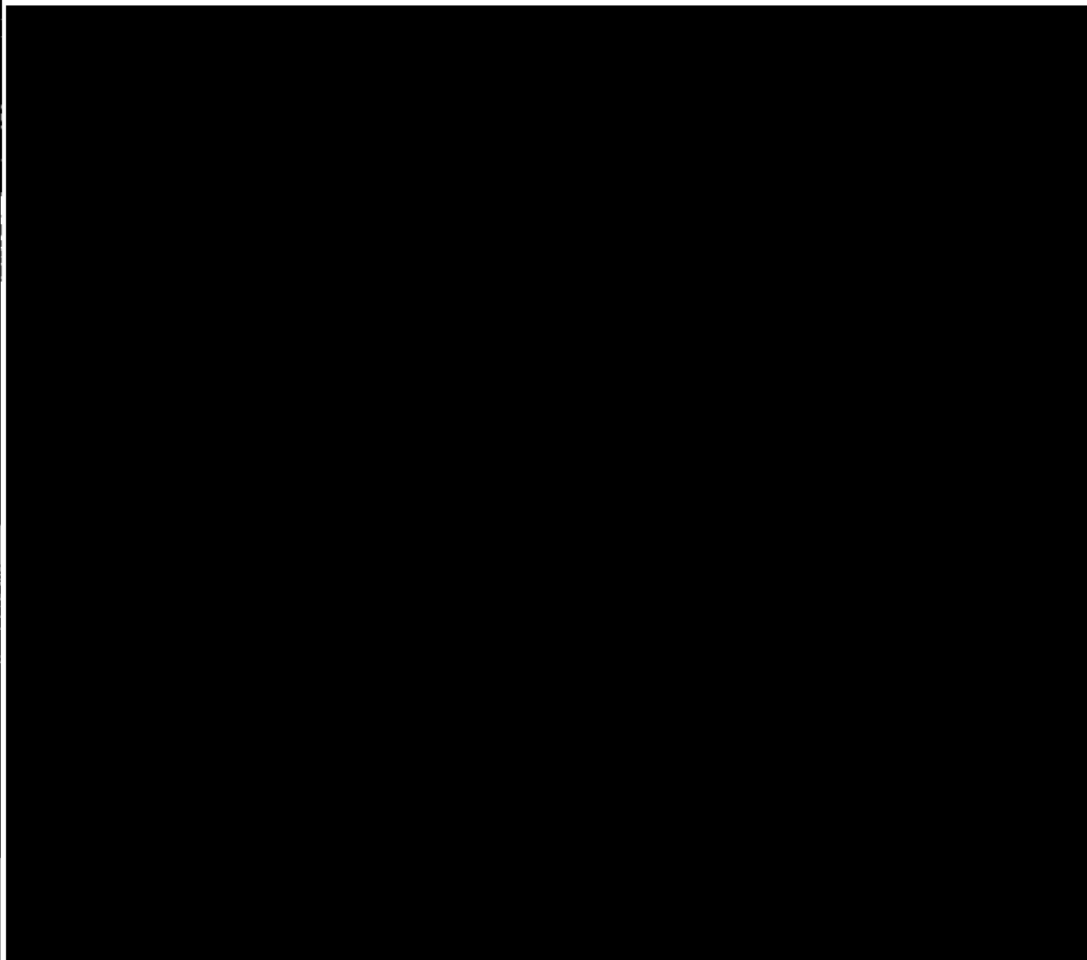
5

4

3

2

1



ITEM 3
 MATERIAL: SST EXTERIOR
 DU INTERIOR



DESCRIPTIVE
 DRAWING

UNLESS OTHERWISE SPECIFIED
 DIMENSIONS IN INCHES
 TOLERANCES:
 FRACTIONS ± 1/8
 .XX ± 0.12
 .XXX ± 0.06
 .XXXX ± 0.020

ERF#
 1100

TITLE		MODEL 3078 SHIELD CONTAINER TOP LEVEL ASSEMBLY	
SIZE	DWG. NO.	R3078	
B	SCALE:	NA	SHEET 4 OF 4

REV
 C

5

4

3

2

1

5

4

3

2

1

D

D

C

C

B

B

A

A

NOTES:

1. ALL PERSONNEL QUALIFICATIONS, WELDING AND EXAMINATION PROCEDURES ARE IN ACCORDANCE WITH THE REQUIREMENTS OF THE AWS, ASME OR BRITISH STANDARD WELDING CODES CURRENT AT THE TIME OF FABRICATION AND INSPECTION.
2. NOTES APPLY TO ALL PAGES.
3. MAXIMUM WEIGHT = 184 lbs
4. MATERIAL OF INSERTS COULD BE DU, TUNGSTEN OR LEAD. FOR DETAILS OF INSERTS SEE SH.8
5. ALL HARDWARE TO MEET ASME B18 STANDARDS.
6. "REF" DENOTES A REFERENCE DIMENSION. PROVIDED FOR GENERAL INFORMATION ONLY. ACTUAL DIMENSION ON FINISHED ITEM MAY FALL OUTSIDE TOLERANCES SHOWN ON DRAWING.



ERF#
1100

8	INSERT	1	SEE NOTE 5 AND SH.8
7	EYEBOLT	1	M10x1.5 SS 20mm shank
6	WASHER	4	MB SS PLAIN WASHER
5	BOLT	4	MBx25 HEX HD BOLT SS
4	JACKET BOTTOM PLATE	1	300 SERIES SS. SEE SH.6
3	JACKET TOP PLATE	1	300 SERIES SS. SEE SH.5
2	JACKET BODY	1	8" OD SS TUBE SEE SH.4
1	LEAD POT 1911 ASSY	1	SEE SH.2

ITEM NO.	PART NAME	QTY.	DESCRIPTION
APPROVALS		DATE	
<i>A.H.</i>		155-105	
<i>X.P.M.A.</i>		17-2-05	
UNLESS OTHERWISE SPECIFIED DIMENSIONS IN INCHES TOLERANCES:			
FRACTIONS ± 1/8			
X.X ± 0.12			
X.XX ± 0.06			
X.XXX ± 0.020			
TITLE			MODEL 1911 SHIELD
SIZE	DWG. NO.	R1911	
B	SCALE:	NTS	SHEET 1 OF 8
			REV C



DESCRIPTIVE
DRAWING

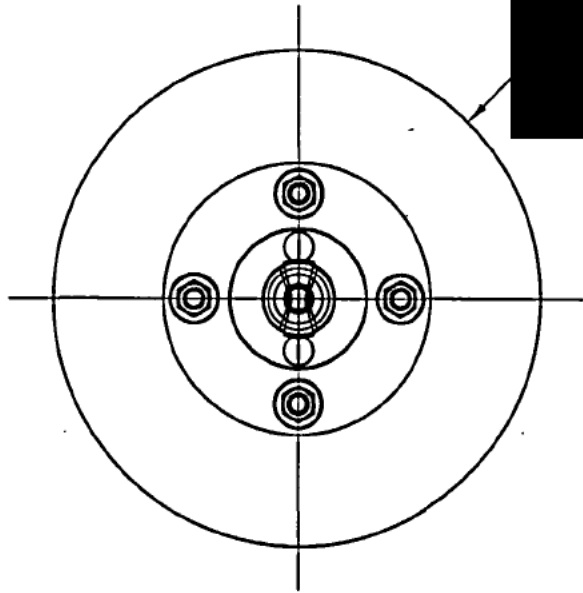
5


4

3

2

1



2	CLOSURE PLATE	1	ST.STEEL SEE SH.7
1	1911 SHIELD	1	LEAD AND SS. SEE SH.3
ITEM NO.	PART NAME	QTY.	DESCRIPTION
			
		40 NORTH AVE, BURLINGTON, MA 01803	
UNLESS OTHERWISE SPECIFIED DIMENSIONS IN INCHES TOLERANCES:		TITLE	
FRACTIONS ± 1/8		MODEL 1911 SHIELD	
X.X ± 0.12		SIZE	DWG. NO. R1911
X.XX ± 0.06		B	SCALE: NTS
X.XXX ± 0.020			SHEET 2 OF 8
ERF#	1100	REV	C

D
C
B
A

D
C
B
A

5 4 3 2 1

5 4 3 2 1

5

4

3

2

1

D

D

C

C

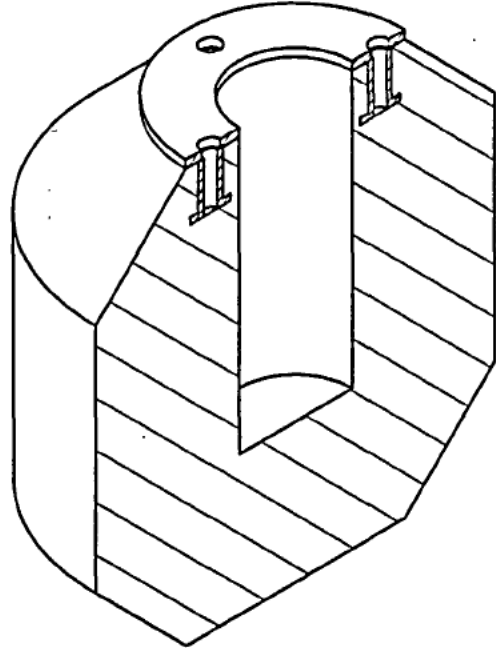
B

B

C

A

A



NO.	PART NAME	QTY.	DESCRIPTION
4	THREADED BOSS	4	MB x 1.25 1" LNG SS
1	TOP PLATE	1	1/8 THK STAINLESS STEEL
1	POT BODY	1	LEAD

NOTES:

1. EXTERIOR LEAD SHIELD DIMENSIONS CAN BE ϕ 7 1/8 BY 8 3/8 TALL IF VERSIONS 2 OF THE TOP PLATE AND BOTTOM PLATE ARE USED IN CONSTRUCTION OF THE STAINLESS STEEL SHIELD HOUSING (SEE SHEETS 5 AND 6)



DESCRIPTIVE DRAWING

UNLESS OTHERWISE SPECIFIED DIMENSIONS IN INCHES

TOLERANCES:
 FRACTIONS \pm 1/8
 .XX \pm 0.12
 .XXX \pm 0.05
 .XXXX \pm 0.020

ERF#
1100

TITLE MODEL 1911 SHIELD

SIZE	DWG. NO.	REV
B	R1911	C
SCALE: NONE		SHEET 3 OF 8

5

4

3

2

1

5

4

3

2

1

D

D

C

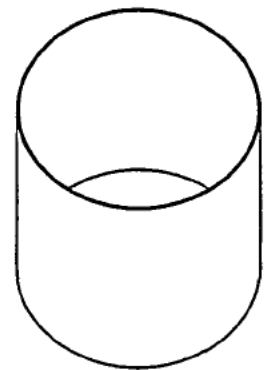
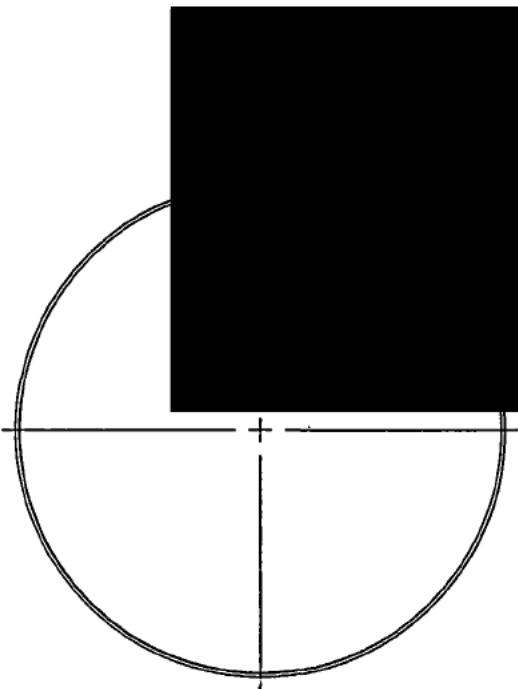
C

B

B

A

A



MATERIAL: STAINLESS STEEL



DESCRIPTIVE DRAWING

UNLESS OTHERWISE SPECIFIED DIMENSIONS IN INCHES TOLERANCES:		TITLE		MODEL 1911 SHIELD		
FRACTIONS ± 1/8		SIZE	DWG. NO.	R1911		
X.X ± 0.12		B	SCALE: 1:2	SHEET 4 OF 8		
X.XX ± 0.06						REV
X.XXX ± 0.020						C
ERF#	1100					

5

4

3

2

1

5

4

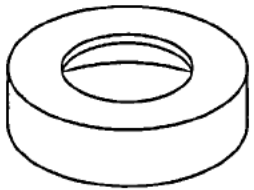
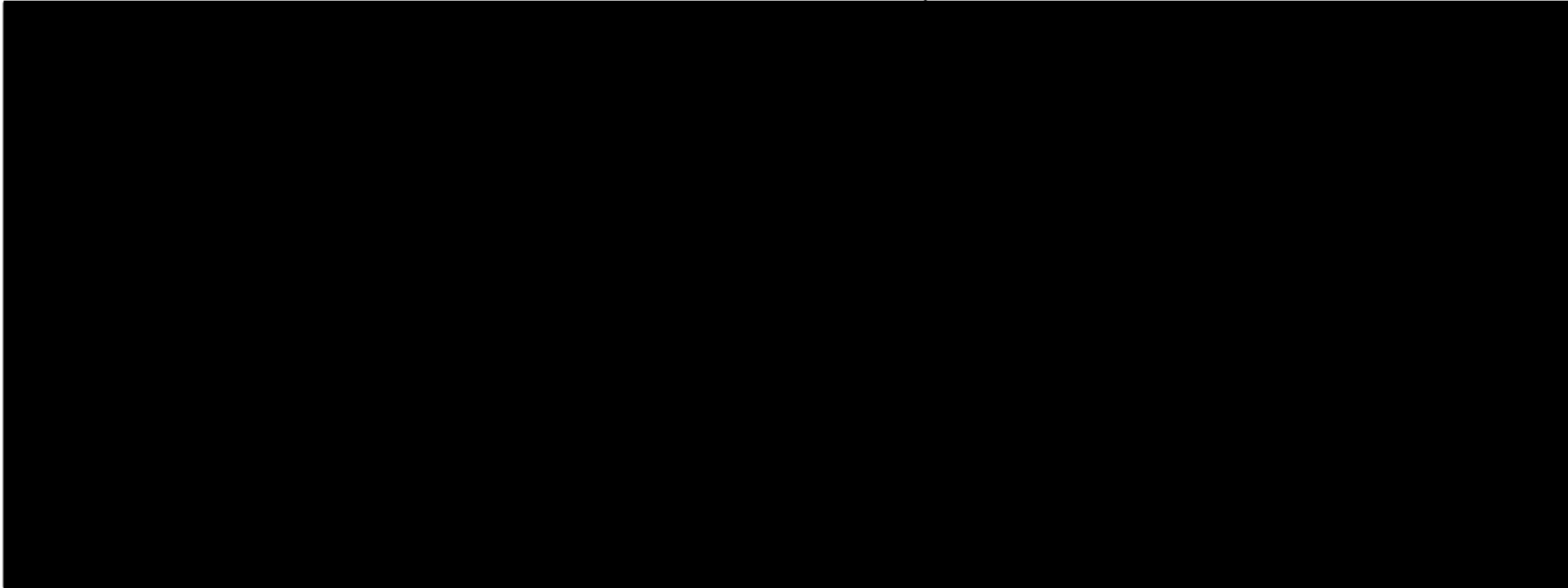
3

2

1

VERSION 1 TOP PLATE

VERSION 2 TOP PLATE



MATERIAL: STAINLESS STEEL



DESCRIPTIVE DRAWING

UNLESS OTHERWISE SPECIFIED
 DIMENSIONS IN INCHES
 TOLERANCES:
 FRACTIONS ± 1/8
 X.X ± 0.12
 X.XX ± 0.06
 X.XXX ± 0.020

TITLE		MODEL 1911 SHIELD	
SIZE	DWG. NO.	R1911	
B	SCALE: 1:2	SHEET 5 OF 8	
REV	C		

ERF#
1100

5

4

3

2

1

D

D

C

C

B

B

A

A

5

4

3

2

1

D

D

C

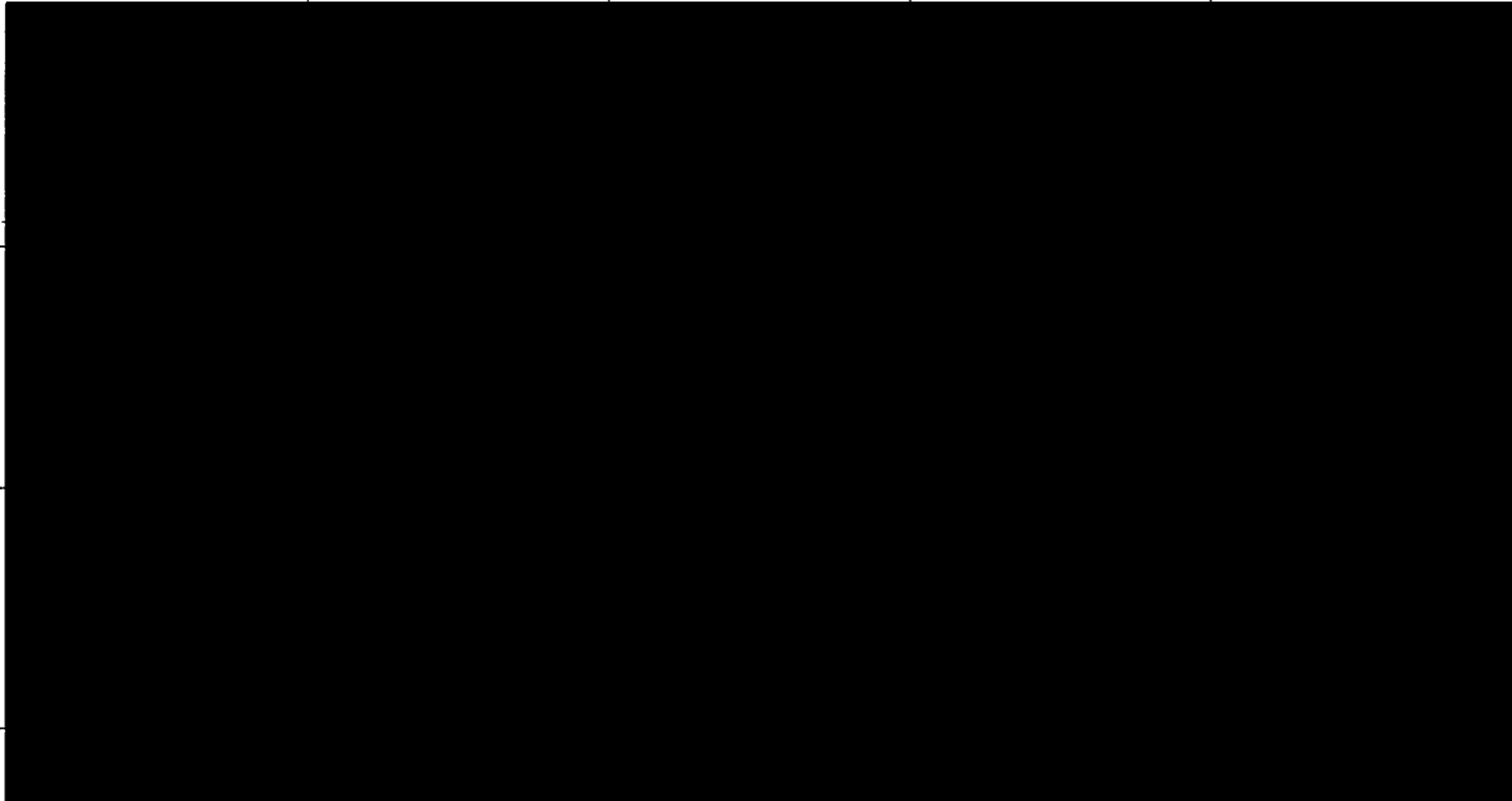
C

B

B

A

A



MATERIAL: STAINLESS STEEL



DESCRIPTIVE
DRAWING

UNLESS OTHERWISE SPECIFIED
DIMENSIONS IN INCHES
TOLERANCES:

FRACTIONS ± 1/8
X.X ± 0.12
X.XX ± 0.06
X.XXX ± 0.020

TITLE MODEL 1911 SHIELD

ERF#
1100

SIZE	DWG. NO.	REV
B	R1911	C
	SCALE: 1:2	SHEET 6 OF 8

5

4

3

2

1

5

4

3

2

1

D

D

C

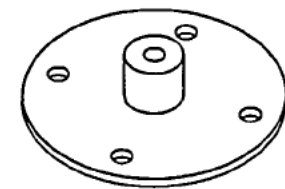
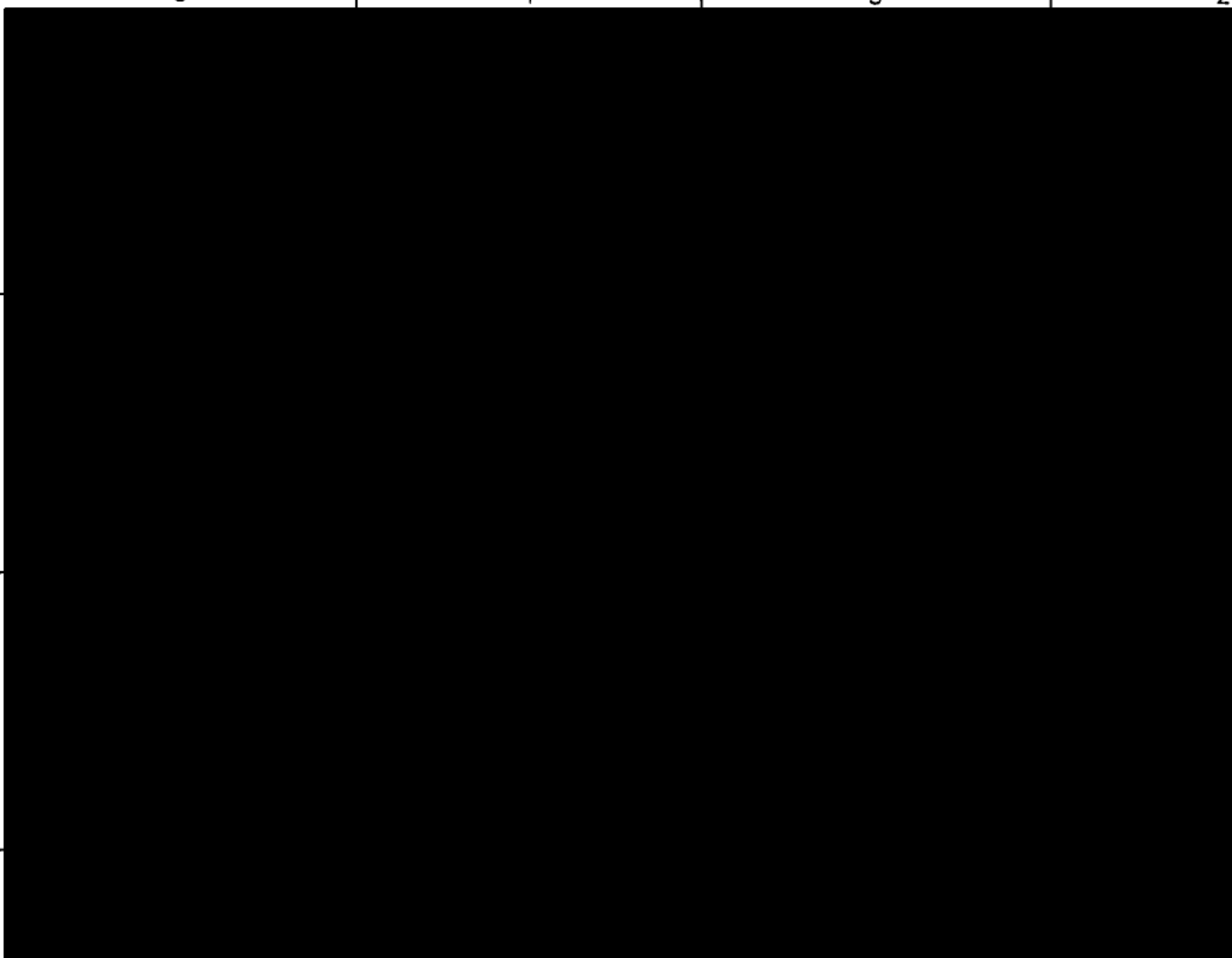
C

B

B

A

A



DESCRIPTIVE
DRAWING

UNLESS OTHERWISE SPECIFIED
DIMENSIONS IN INCHES
TOLERANCES:
FRACTIONS ± 1/8
XX ± 0.12
X.XX ± 0.06
X.XXX ± 0.020

ERF#
1100

TITLE		MODEL 1911 SHIELD	
SIZE	DWG. NO.	R1911	
B	SCALE:	1:1	SHEET 7 OF 8
			REV C

5

4

3

2

1

5

4

3

2

1

D

D

C

C

B

B

A

A

NOTES
 1. WIRE HANDLES NOT SHOWN HERE FOR CLARITY.



40 NORTH AVE. BURLINGTON, MA 01803

DESCRIPTIVE
DRAWING

UNLESS OTHERWISE SPECIFIED
 DIMENSIONS IN INCHES
 TOLERANCES:
 FRACTIONS ± 1/8
 .XX ± 0.12
 .XXX ± 0.05
 .XXXX ± 0.020

ERF#
1100

TITLE		MODEL 1911 SHIELD	
SIZE	DWG. NO.	R1911	
B	SCALE:	NTS	SHEET 8 OF 8
			REV C

5

4

3

2

1