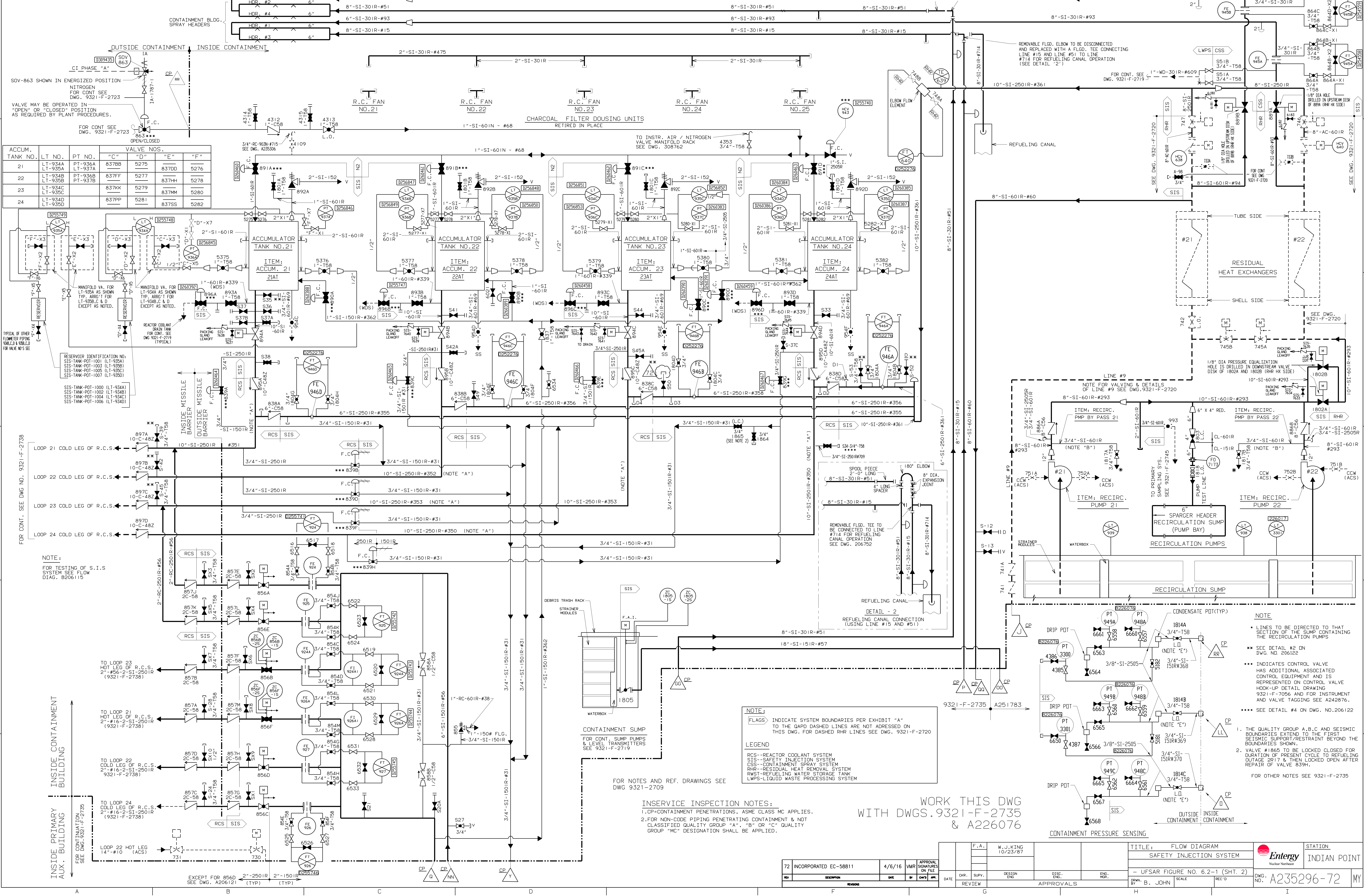


A235296



| TANK NO. | LT NO. | PT NO. | "C" | "D" | "E" | "F" |
|----------|---------|---------|-------|------|-------|------|
| 21 | LT-934A | PT-936A | 8378B | 5275 | 8370D | 5276 |
| | LT-935A | PT-937A | 8378F | 5277 | 8370H | 5278 |
| 22 | LT-934B | PT-936B | 8377F | 5279 | 8374H | 5280 |
| | LT-935B | PT-937B | 8377K | 5279 | 8374M | 5280 |
| 23 | LT-934C | PT-936C | 8377K | 5279 | 8374M | 5280 |
| | LT-935C | PT-937C | 8377P | 5281 | 8375S | 5282 |
| 24 | LT-934D | PT-936D | 8377P | 5281 | 8375S | 5282 |
| | LT-935D | PT-937D | 8377P | 5281 | 8375S | 5282 |

RESERVOIR IDENTIFICATION NO:
 SIS-TANK-POT-100 (LT-934A)
 SIS-TANK-POT-100 (LT-934B)
 SIS-TANK-POT-100 (LT-934C)
 SIS-TANK-POT-100 (LT-934D)
 SIS-TANK-POT-100 (LT-935A)
 SIS-TANK-POT-100 (LT-935B)
 SIS-TANK-POT-100 (LT-935C)
 SIS-TANK-POT-100 (LT-935D)

FOR CONT. SEE DWG NO. 9321-F-2738
 LOOP 21 COLD LEG OF R.C.S.
 LOOP 22 COLD LEG OF R.C.S.
 LOOP 23 COLD LEG OF R.C.S.
 LOOP 24 COLD LEG OF R.C.S.

NOTE:
 FOR TESTING OF S.I.S. SYSTEM SEE FLOW DIAG. 8206119

INSIDE CONTAINMENT BUILDING
 INSIDE PRIMARY AUX. BUILDING
 FOR CONTINUATION SEE DWG. 9321-F-2735

EXCEPT FOR 856D 2"-250IR (TYP) 2"-150IR (TYP)

NOTE:
 FLAGS INDICATE SYSTEM BOUNDARIES PER EXHIBIT "A" TO THE GMP. DASHED LINES ARE NOT ADDRESSED ON THIS DWG. FOR DASHED RHR LINES SEE DWG. 9321-F-2720

LEGEND
 RCS-REACTOR COOLANT SYSTEM
 SIS-SAFETY INJECTION SYSTEM
 CSS-CONTAINMENT SPRAY SYSTEM
 RHR-RESIDUAL HEAT REMOVAL SYSTEM
 RWST-REFUELING WATER STORAGE TANK
 LWPS-LIQUID WASTE PROCESSING SYSTEM

INSERVICE INSPECTION NOTES:
 1. CP=CONTAINMENT PENETRATIONS. ASME CLASS MC APPLIES.
 2. FOR NON-CODE PIPING PENETRATING CONTAINMENT & NOT CLASSIFIED QUALITY GROUP "A", "B" OR "C" QUALITY GROUP "MC" DESIGNATION SHALL BE APPLIED.

FOR NOTES AND REF. DRAWINGS SEE DWG 9321-2709

WORK THIS DWG WITH DWGS. 9321-F-2735 & A226076

| | | | | | | | | | | | |
|--|--------|-----|-----------------------------|------|-----|-------|--------------|------------|-----------|---|-----------------------|
| 72 INCORPORATED EC-58811 | 4/6/16 | VNR | APPROVAL SIGNATURES ON FILE | DATE | CR. | SUPV. | DESIGN ENGR. | SIS. ENGR. | ENG. MGR. | TITLE: FLOW DIAGRAM SAFETY INJECTION SYSTEM | STATION: INDIAN POINT |
| APPROVALS W. J. KING 10/23/87 B. JOHN SCALE: REC'D DWG. NO. A235296-72 | | | | | | | | | | | |