

**COMMUNITY** Hospital

September 14, 2018

U.S. Nuclear Regulatory Commission  
Licensing Division Region III  
2443 Warrenville Road, Suite 120  
Lisle, IL 60532

RE: NRC Radioactive Material License #13-15882-03, The Community Hospital, Munster,  
Indiana

Dear Sir or Madam:

We request that the Cardiology Clinic, Suite 208, be removed from our license for unrestricted use.

1. Wayne Wcislo, Senior Nuclear Medicine Technologist, completed the closeout survey of the room on September 8, 2018.
2. The attached report demonstrates the area is currently at background levels for radiation and is free of fixed and removable contamination, meeting all the requirements for the release of this area for unrestricted use.

Thank you for your assistance in this matter. If you have any further questions, please contact our radiation safety officer at (219) 703-1742 x31725.

Sincerely,



Jacqueline Katz  
Director of Radiation Oncology and Medical Physics

RECEIVED SEP 20 2018

## Suite 208, Community Hospital, Munster, IN Closeout

### Work History

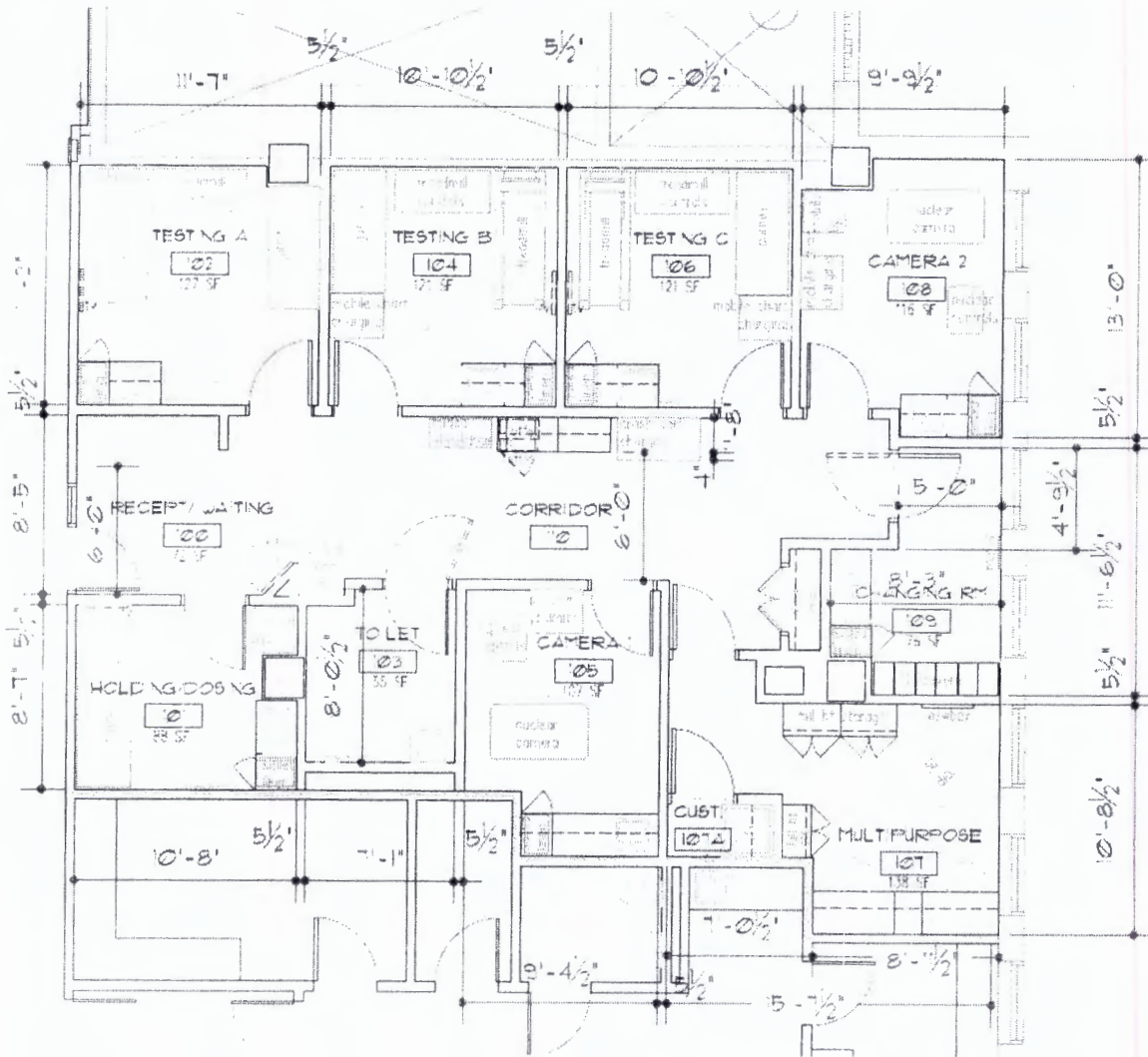
Wayne Wcislo performed the closeout survey of the Cardiology Clinic spaces at Suite 208, Community Hospital, Munster, IN on September 8, 2018.

1. Historical review of the licensed activities determined the only unsealed isotope used in these spaces was Tc-99m.
2. Tc-99m had not been used in these spaces since September 4, 2018.
3. Historical records show that no major spills have occurred in these spaces.
4. No sealed sources are present in these spaces. All sealed sources and records have been moved across the hall to the new cardiology spaces.

### Survey Procedures

1. A survey of the rooms using a Ludlum 14 survey meter (SN: 30497) with a pancake probe model 44-9, calibrated on April 13, 2018, was completed. All floors and walls had readings at background, 0.01 mR/hr.
2. A removable contamination survey was performed to determine if any radioactive materials remained in the rooms (Tc-99m).
  - a. The floors were divided into grid squares approximately 1-meter x 1-meter, conforming to the room shape. The walls were divided into sections approximately 1 meter wide, and each wipe covered the section from the floor to approximately 2 meters up. The diagrams are attached to reference the wipe locations for the removable contamination data. A total of 66 locations were surveyed and wiped.
  - b. The removable survey data includes the four rooms where isotopes were used or stored in this clinic. These rooms are the Hot Lab, approximately 4 ft x 18 inches – 3 wipes; the injection room, approximately 9 ft x 9 ft – 21 wipes; the dual head camera room, approximately 8 ft x 10 ft – 21 wipes; the triple head camera room – approximately 8 ft x 10 ft – 21 wipes.
  - c. A Biodex Well Counter, Model 075-590, serial number 1803171, was used to analyze the wipes. The collected samples were each from a minimum of 100 cm<sup>2</sup> area. Each sample was counted for 1 minute. The Minimum Detectable Concentration (MDC) calculation for this equipment is 114 DPM. All wipes had readings below the MDC for this instrument.
3. The surveys performed demonstrate that all areas are at background levels for radiation. The results of the removable contamination wipes verify the rooms are below the MDC of this equipment and the MDC is below the release criteria for unrestricted use. The results provided meet the regulatory requirements of the NRC for the release of these spaces for unrestricted use.

Revisions, dated 7/10/15.



Cardiovascular  
Nuclear Stress  
Testing  
Suite 208 MOB  
7/10/15



Physics

Temp-Return  
Service Requested  
1109/17/1A11

PRESORTED  
FIRST-CLASS  
US POSTAGE \$00.45<sup>8</sup>  
SEP 15 2018  
ZIP 46601  
0R01 1052712

U.S. NR c  
Licensing Division Region III  
2443 Warrenville Road  
Hisle, IL 60532

RECEIVED SEP 20 2018

2 FRDENMP 60532

