

R 77 W

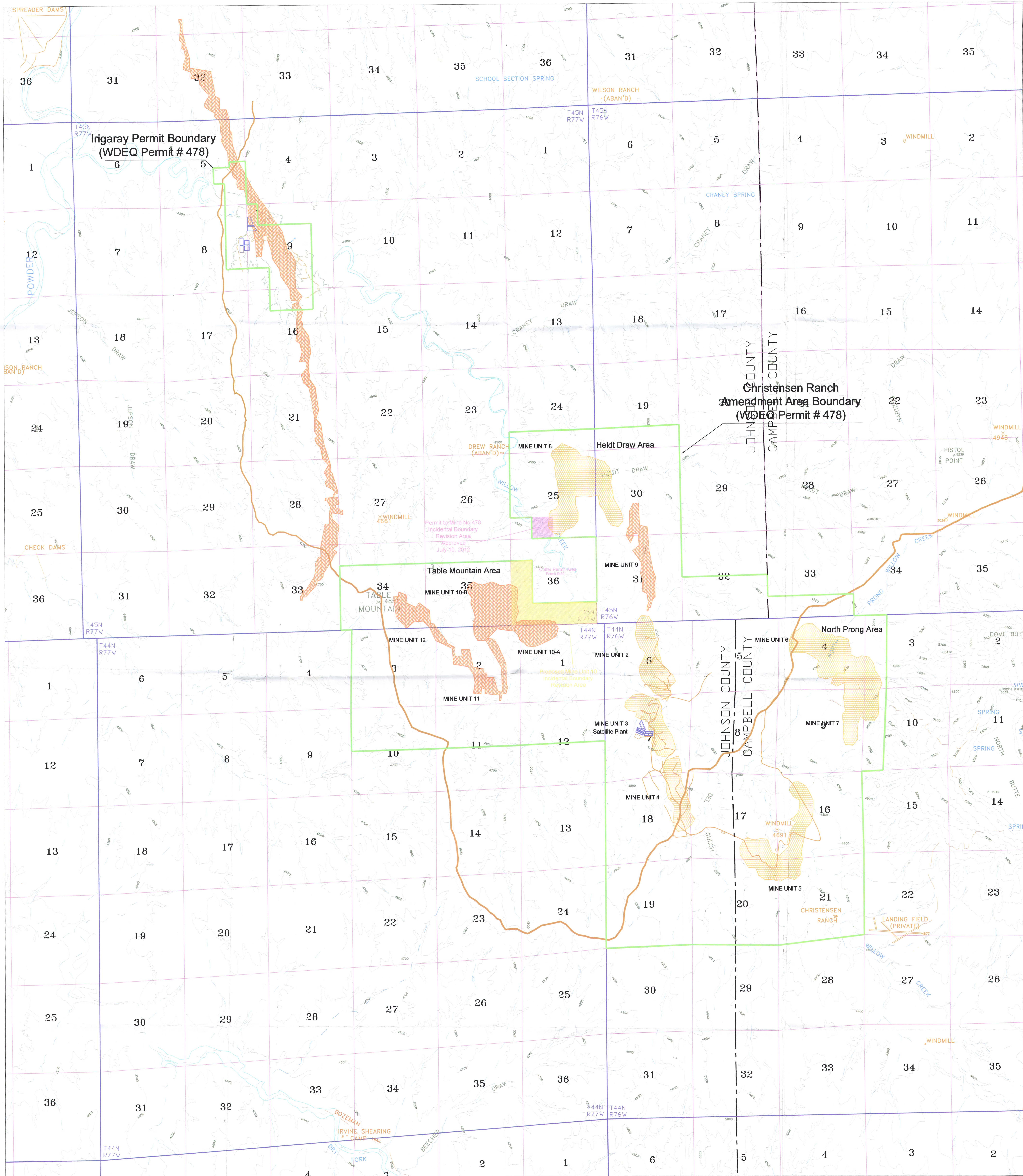
R 76 W

T 45 N

T 45 N

T 44 N

T 44 N

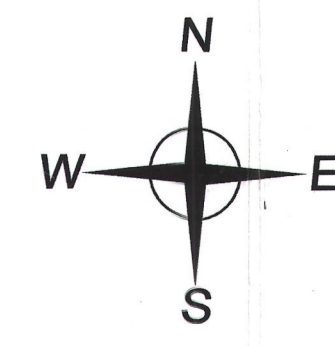


R 77 W

R 76 W

- LEGEND**
- Wellfield Access Roads
 - Haul Road
 - Wellfield Area - Existing
 - Wellfield Area - Future
 - Evaporation Ponds
 - Topsoil Stockpile
 - Incidental Boundary Revision Area
 - Mine Unit 10 Incidental Boundary Revision

0 2000 4000



uraniumone™
investing in our energy

907 North Poplar St., Suite 260, Casper, WY 82601 307-234-8235

Figure 3.1
Willow Creek Project
Irigaray & Christensen Ranch Permit Areas

Johnson & Campbell Counties, Wyoming

Date: 11/28/2011	By: U1	Checked:		
Rev. No.	Description	Date	By	Sheet:
Rev 1	Incidental Boundary Revision	April 2012	U1	
Rev 2	MU10 Incidental Boundary Revision	October 2012	CEO	