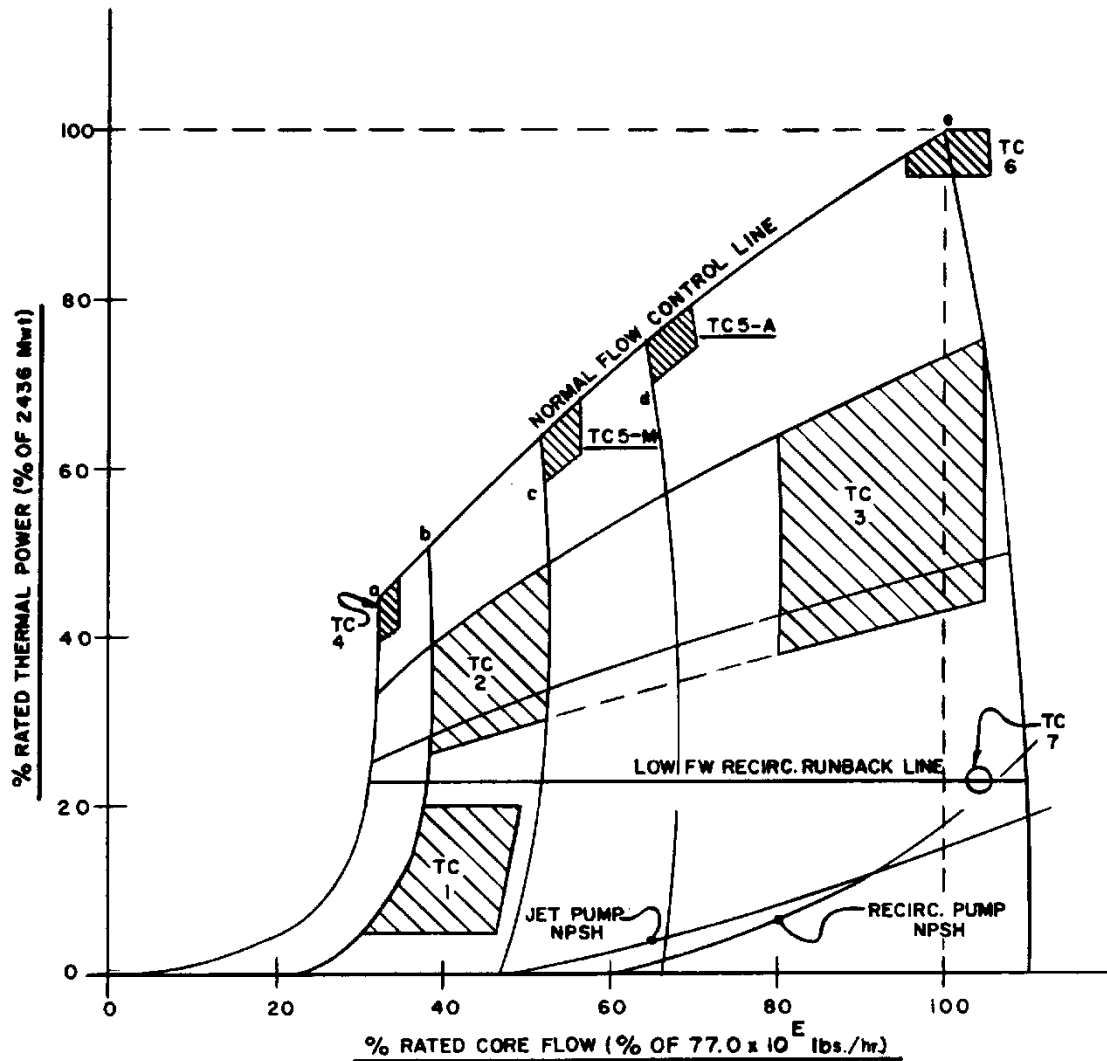
	UPDATED FSAR INITIAL TEST PROGRAM CHAPTER 14 FIGURES	Revision: 25 Chapter: 14 Page: 1 of 1
---	---	---

LIST OF FIGURES

FIGURE NUMBER	TITLE
FIGURE 14-1	POWER - FLOW MAP AND START UP TEST CONDITIONS
FIGURE 14-2	BRUNSWICK STARTUP AND OPERATIONS ORGANIZATION - PHASE I
FIGURE 14-3	BRUNSWICK STARTUP AND OPERATIONS ORGANIZATION - PHASE II

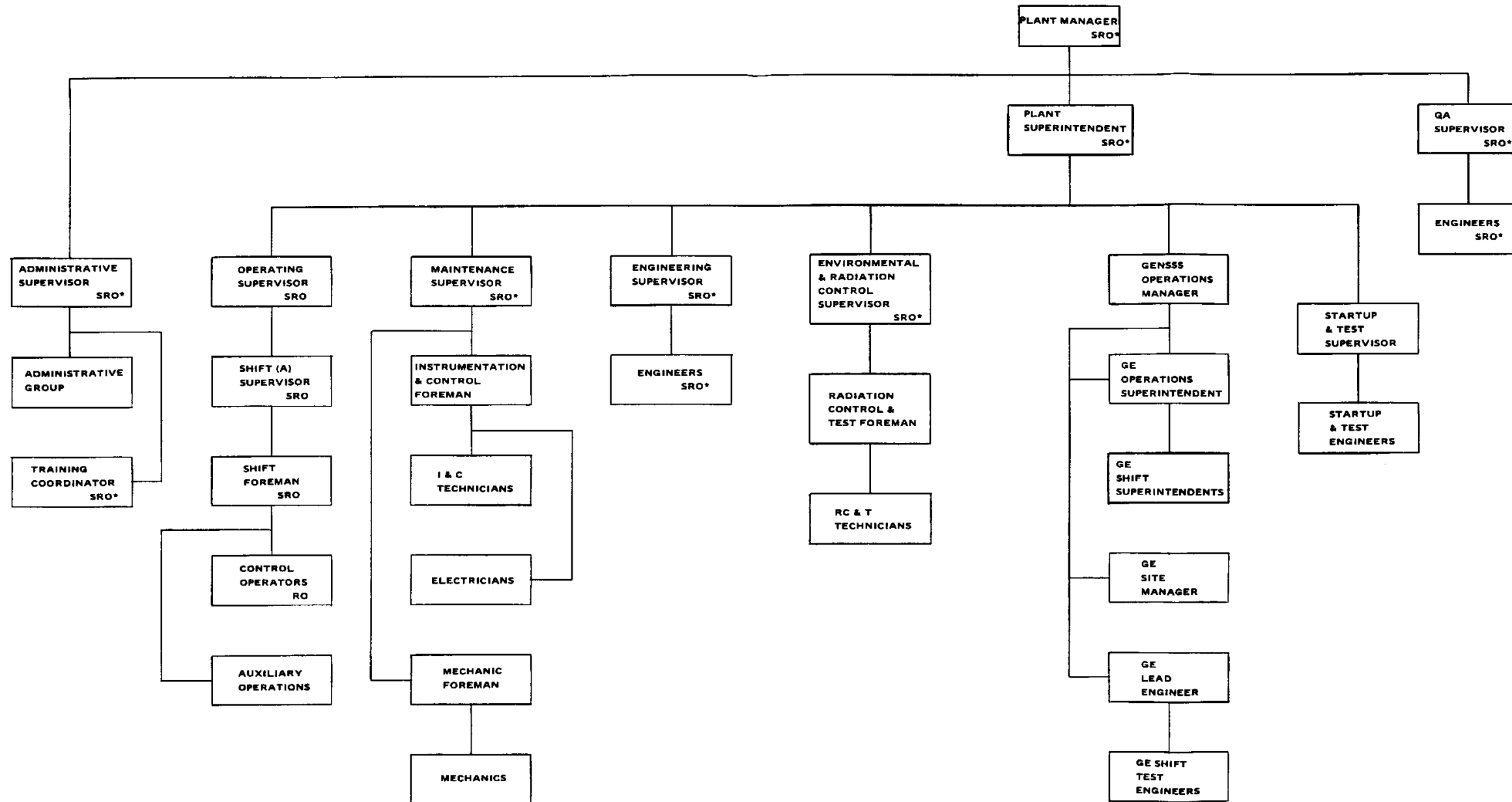
POWER - FLOW MAP AND START-UP TEST CONDITIONS



NOTES

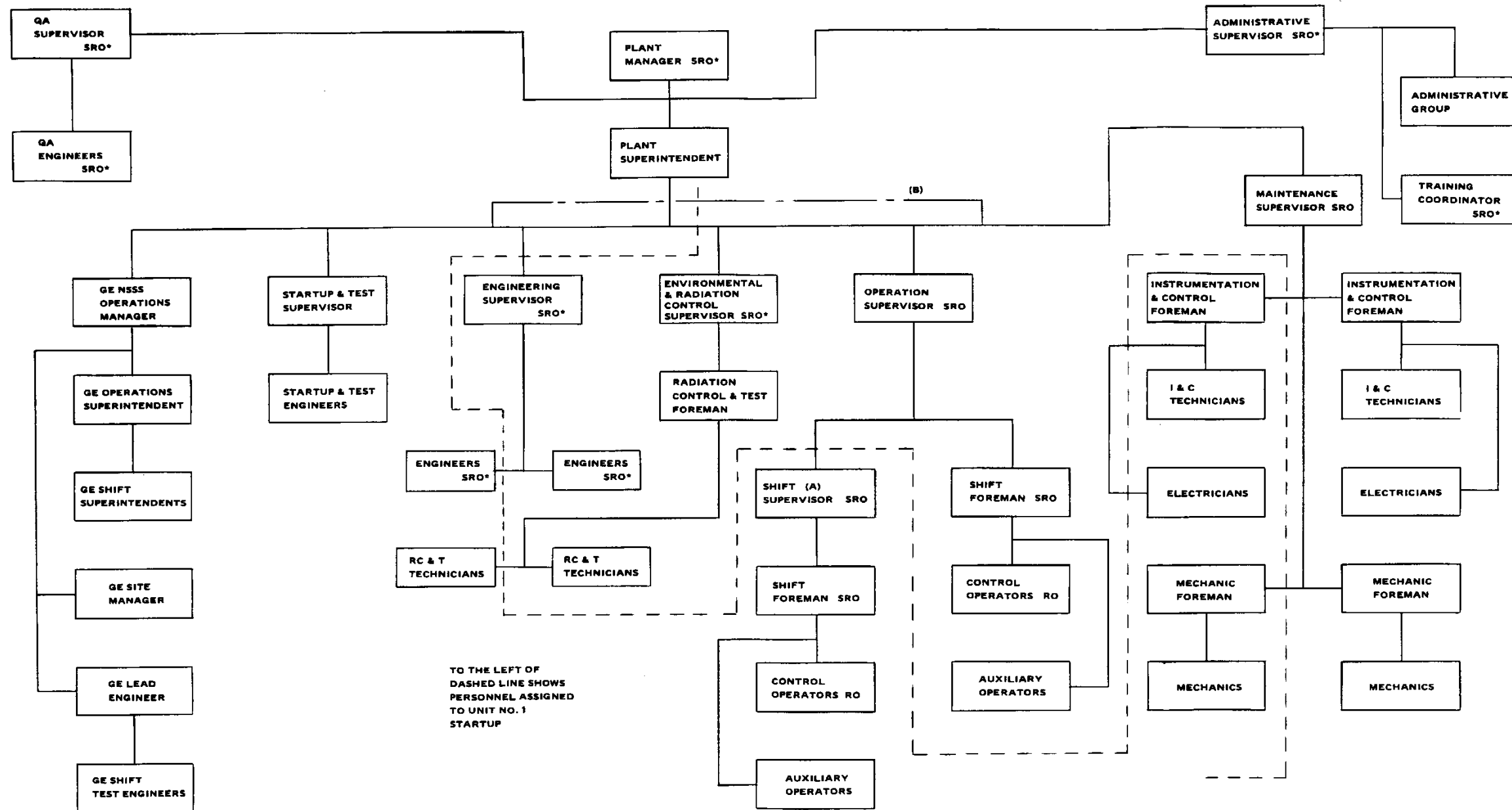
1. See Table 14.2.1 - 2 for definition of test conditions
2. Constant Pump Speed Lines
 - a. Natural circulation
 - b. 20% Pump speed
 - c. Analytical lower limit of master flow control
 - d. Contractual lower limit of flow control
 - e. Rated pump speed (results in rated flow at rated power)

BRUNSWICK STARTUP AND OPERATIONS ORGANIZATION - PHASE I



* SRO DESIRED;
(A) REQUIRED ON SHIFT WHEN SIGNIFICANT TESTING IS IN PROGRESS DURING STARTUP PROGRAM

BRUNSWICK STARTUP AND OPERATIONS ORGANIZATION - PHASE II



TO THE LEFT OF
DASHED LINE SHOWS
PERSONNEL ASSIGNED
TO UNIT NO. 1
STARTUP

* SRO DESIRED
(A) REQUIRED ON SHIFT WHEN SIGNIFICANT TESTING IS IN PROGRESS DURING INITIAL STARTUP PROGRAM. WHEN SIGNIFICANT TESTING IS NOT IN PROGRESS, SHIFT CREW WILL REVERT TO NORMAL 2 UNIT OPERATING CREW.
(B) MATTERS CONCERNING UNIT 1 WILL BE COORDINATED THROUGH STARTUP SUPERVISOR.