	<p><b>UPDATED FSAR</b></p> <p><b>AUXILIARY SYSTEMS</b></p> <p><b>CHAPTER 9 FIGURES</b></p>	<p>Revision: 26</p> <p>Chapter: 9</p> <p>Page: 1 of 5</p>
---	--	---

## ***LIST OF FIGURES***

**FIGURE**

<b>NUMBER</b>	<b>TITLE</b>
FIGURE 9-1	NEW FUEL STORAGE VAULT
FIGURE 9-2	OUTLINE NEW FUEL STORAGE RACK
FIGURE 9-3	DELETED IN REVISION 21
FIGURE 9-4	FUEL POOL MODULE ARRANGEMENTS
FIGURE 9-5	FUEL PREPARATION MACHINE
FIGURE 9-6	CHANNEL GAUGING FIXTURE
FIGURE 9-7	OUTLINE CONTROL ROD (ORIGINAL EQUIPMENT DESIGN)
FIGURE 9-8	SPENT FUEL POOL GRID STRUCTURE
FIGURE 9-9	6 x 6 BWR FUEL RACK
FIGURE 9-10	PWR FUEL RACK
FIGURE 9-11	FUEL RACK LATCH ASSEMBLIES
FIGURE 9-12	SCHEMATIC OF TYPICAL HDFSS MODULE
FIGURE 9-13	HDFSS MODULE SUPPORT SYSTEM
FIGURE 9-14	HDFSS MODULE SUPPORT SYSTEM DETAIL
FIGURE 9-15	BRUNSWICK FUEL POOL EVALUATION CASE 1 – BATCH OFFLOAD STARTING AT 190 HOURS
FIGURE 9-16	BRUNSWICK FUEL POOL EVALUATION CASE 2 – FULL CORE OFFLOAD STARTING AT 24 HOURS
FIGURE 9-17	BRUNSWICK FUEL POOL EVALUATION CASE 1 – BATCH OFFLOAD STARTING AT 190 HOURS

## ***LIST OF FIGURES***

**FIGURE**

<b>NUMBER</b>	<b>TITLE</b>
FIGURE 9-18	BRUNSWICK FUEL POOL EVALUATION CASE 2 – FULL CORE OFFLOAD STARTING AT 24 HOURS
FIGURE 9-19	BRUNSWICK FUEL POOL EVALUATION CASE 1 – BATCH OFFLOAD STARTING AT 190 HOURS
FIGURE 9-20	DELETED IN REVISION 18A
FIGURE 9-21	DELETED IN REVISION 21
FIGURE 9-22	DELETED IN REVISION 21
FIGURE 9-23	REDUNDANT FEATURES OF REACTOR BUILDING CRANE
FIGURE 9-24	REDUNDANT HOOK AND LOAD BLOCK
FIGURE 9-25	UPKICK LUG
FIGURE 9-26	TYPICAL 35 DAY OUTAGE WINDOW SCHEDULE
FIGURE 9-27	DELETED IN REVISION 21
FIGURE 9-28	DELETED IN REVISION 21
FIGURE 9-29	DELETED IN REVISION 21
FIGURE 9-30	SERVICE WATER PUMP DIMENSIONS
FIGURE 9-31	DELETED IN REVISION 21
FIGURE 9-32	DELETED IN REVISION 21
FIGURE 9-33	DELETED IN REVISION 21
FIGURE 9-34	DELETED IN REVISION 21
FIGURE 9-35	DELETED IN REVISION 21

## *LIST OF FIGURES*

**FIGURE**

<b>NUMBER</b>	<b>TITLE</b>
FIGURE 9-36	DELETED IN REVISION 21
FIGURE 9-37	DELETED IN REVISION 21
FIGURE 9-38	DELETED IN REVISION 21
FIGURE 9-39	DELETED IN REVISION 21
FIGURE 9-40	DELETED IN REVISION 21
FIGURE 9-41	DELETED IN REVISION 21
FIGURE 9-42	DELETED IN REVISION 21
FIGURE 9-43	DELETED IN REVISION 21
FIGURE 9-44	DELETED IN REVISION 21
FIGURE 9-45	BLOCK FLOW DIAGRAM – DRAINAGE SYSTEM
FIGURE 9-46	DELETED IN REVISION 21
FIGURE 9-47	STANDBY LIQUID CONTROL CORE $\Delta P$ LINE
FIGURE 9-48	SATURATION TEMPERATURE OF SODIUM PENTABORATE SOLUTION
FIGURE 9-49	SODIUM PENTABORATE SOLUTION VOLUME CONCENTRATION REQUIREMENTS
FIGURE 9-50	BORON REQUIREMENTS OF THE STANDBY LIQUID CONTROL SYSTEM
FIGURE 9-51	DELETED IN REVISION 21
FIGURE 9-52	DELETED IN REVISION 21
FIGURE 9-53	DELETED IN REVISION 21
FIGURE 9-54	DELETED IN REVISION 21

## ***LIST OF FIGURES***

**FIGURE**

<b>NUMBER</b>	<b>TITLE</b>
FIGURE 9-55	DELETED IN REVISION 21
FIGURE 9-56	DELETED IN REVISION 26
FIGURE 9-57	DELETED IN REVISION 26
FIGURE 9-58	DELETED IN REVISION 26
FIGURE 9-59	DELETED IN REVISION 23
FIGURE 9-60	DELETED IN REVISION 26
FIGURE 9-61	DELETED IN REVISION 26
FIGURE 9-62	DELETED IN REVISION 26
FIGURE 9-63	DELETED IN REVISION 26
FIGURE 9-64	DELETED IN REVISION 26
FIGURE 9-65	DELETED IN REVISION 26
FIGURE 9-66	DELETED IN REVISION 26
FIGURE 9-67	DELETED IN REVISION 26
FIGURE 9-68	DELETED IN REVISION 21
FIGURE 9-69	DELETED IN REVISION 21
FIGURE 9-70	DELETED IN REVISION 21
FIGURE 9-71	DELETED IN REVISION 21
FIGURE 9-72	DELETED IN REVISION 21
FIGURE 9-73	DELETED IN REVISION 21

## ***LIST OF FIGURES***

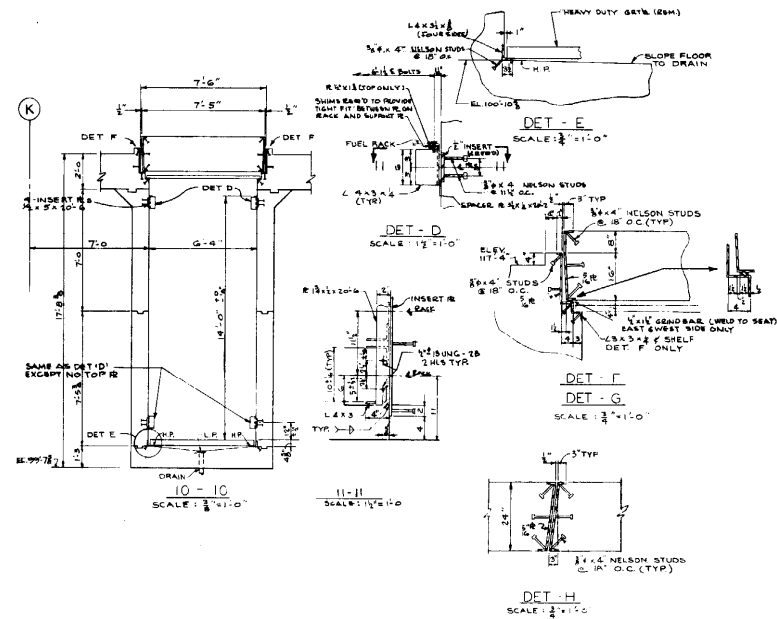
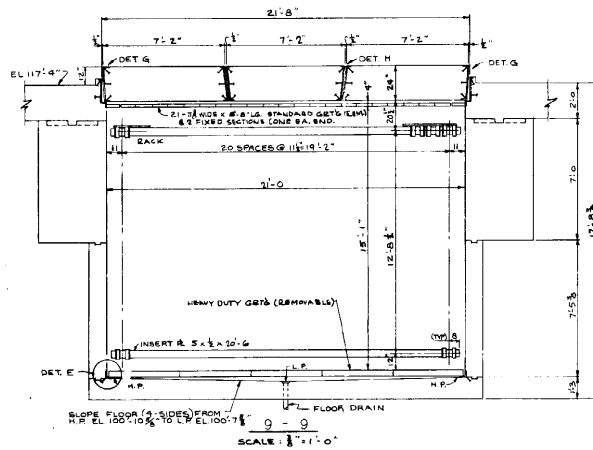
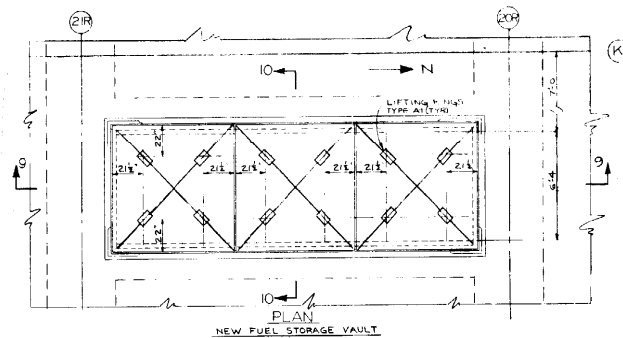
**FIGURE**

<b>NUMBER</b>	<b>TITLE</b>
---------------	--------------

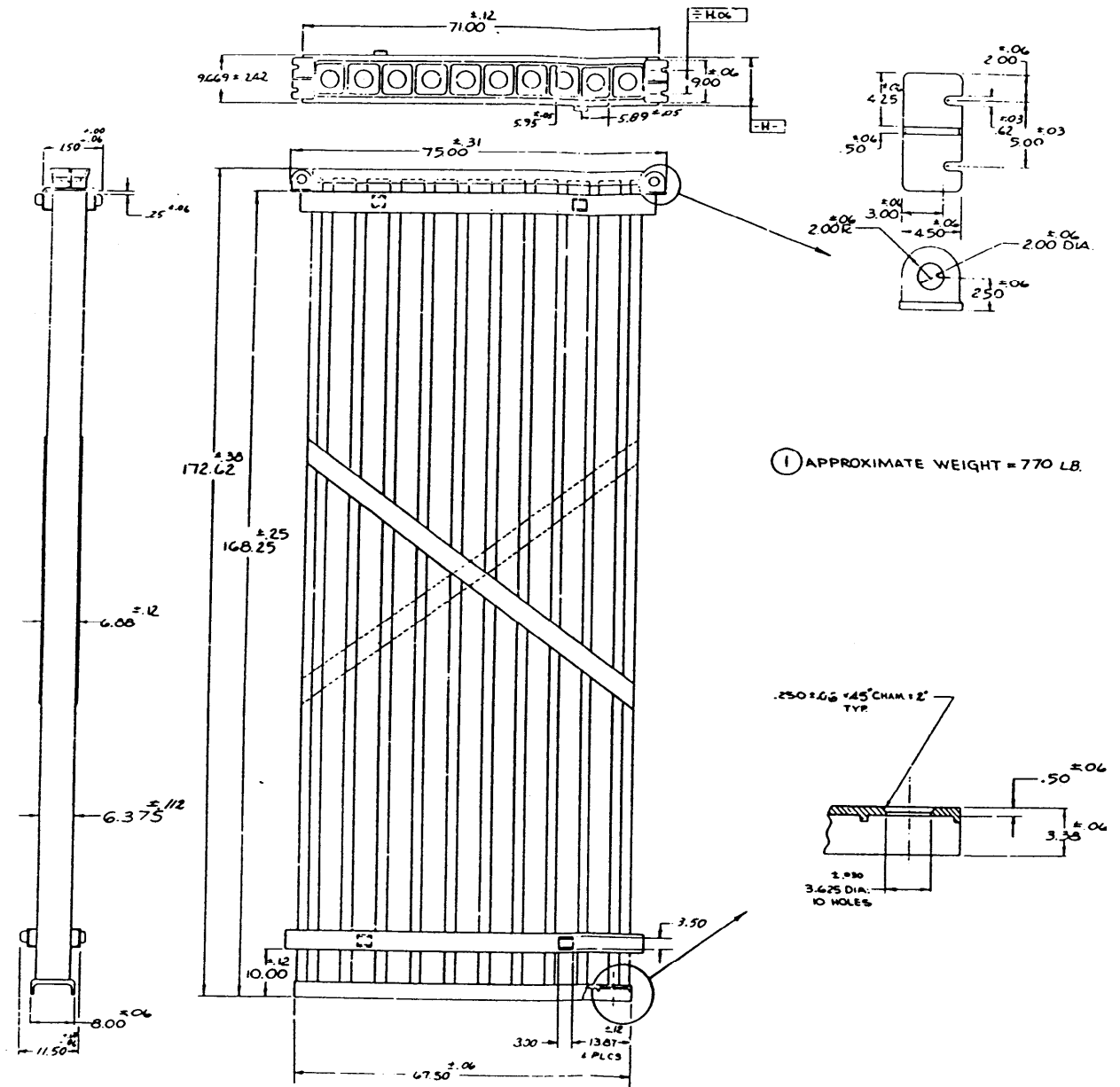
---

- |             |  |
|-------------|--|
| FIGURE 9-74 | DELETED IN REVISION 21                         |
| FIGURE 9-75 | DELETED IN REVISION 21                         |
| FIGURE 9-76 | SINGLE LINE KEY AC LIGHTING DISTRIBUTION       |
| FIGURE 9-77 | DELETED IN REVISION 21                         |
| FIGURE 9-78 | DC SINGLE LINE EMERGENCY LIGHTING DISTRIBUTION |

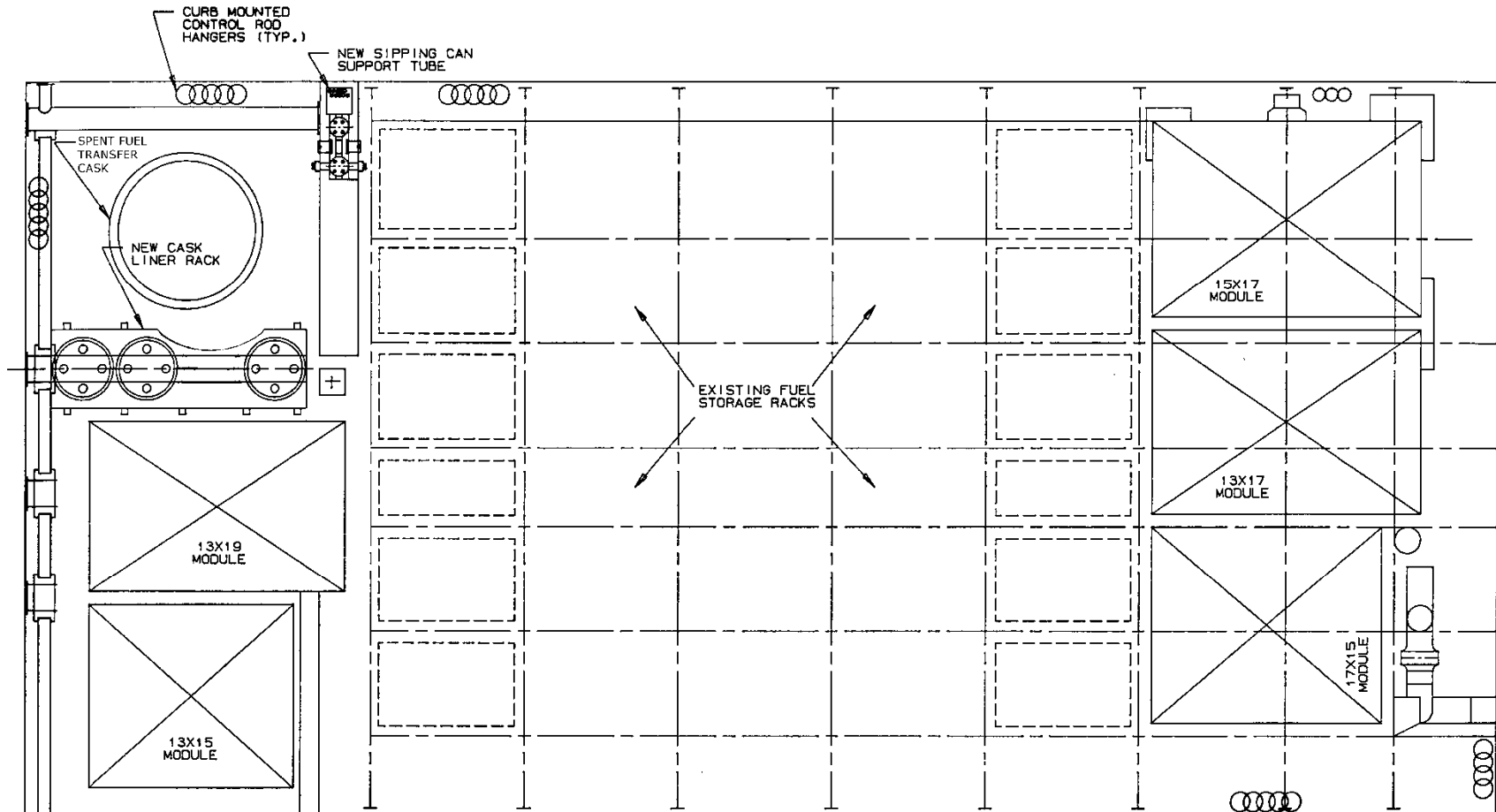
**NEW FUEL STORAGE VAULT**



### Outline New Fuel Storage Rack

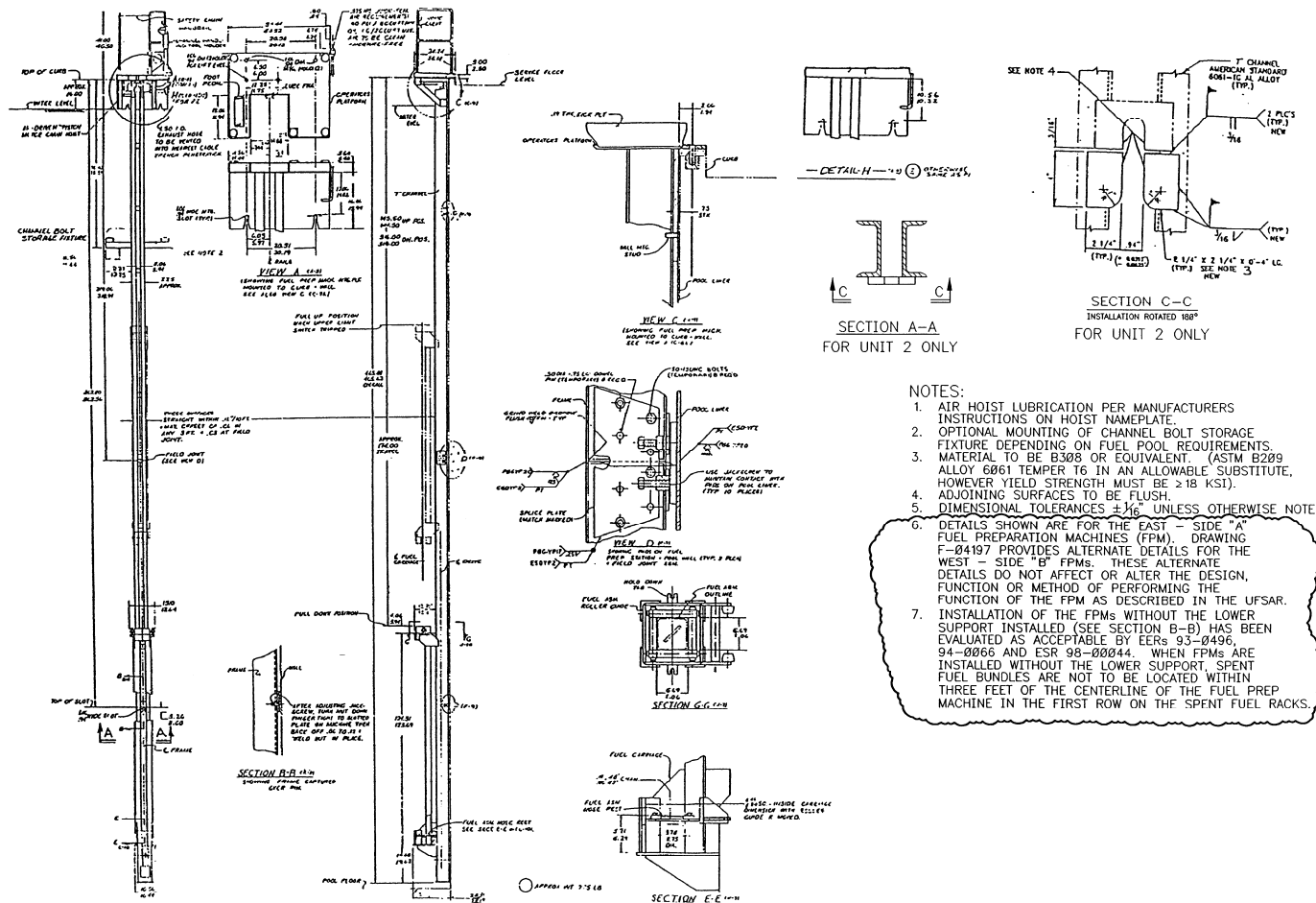


### FUEL POOL MODULE ARRANGEMENTS





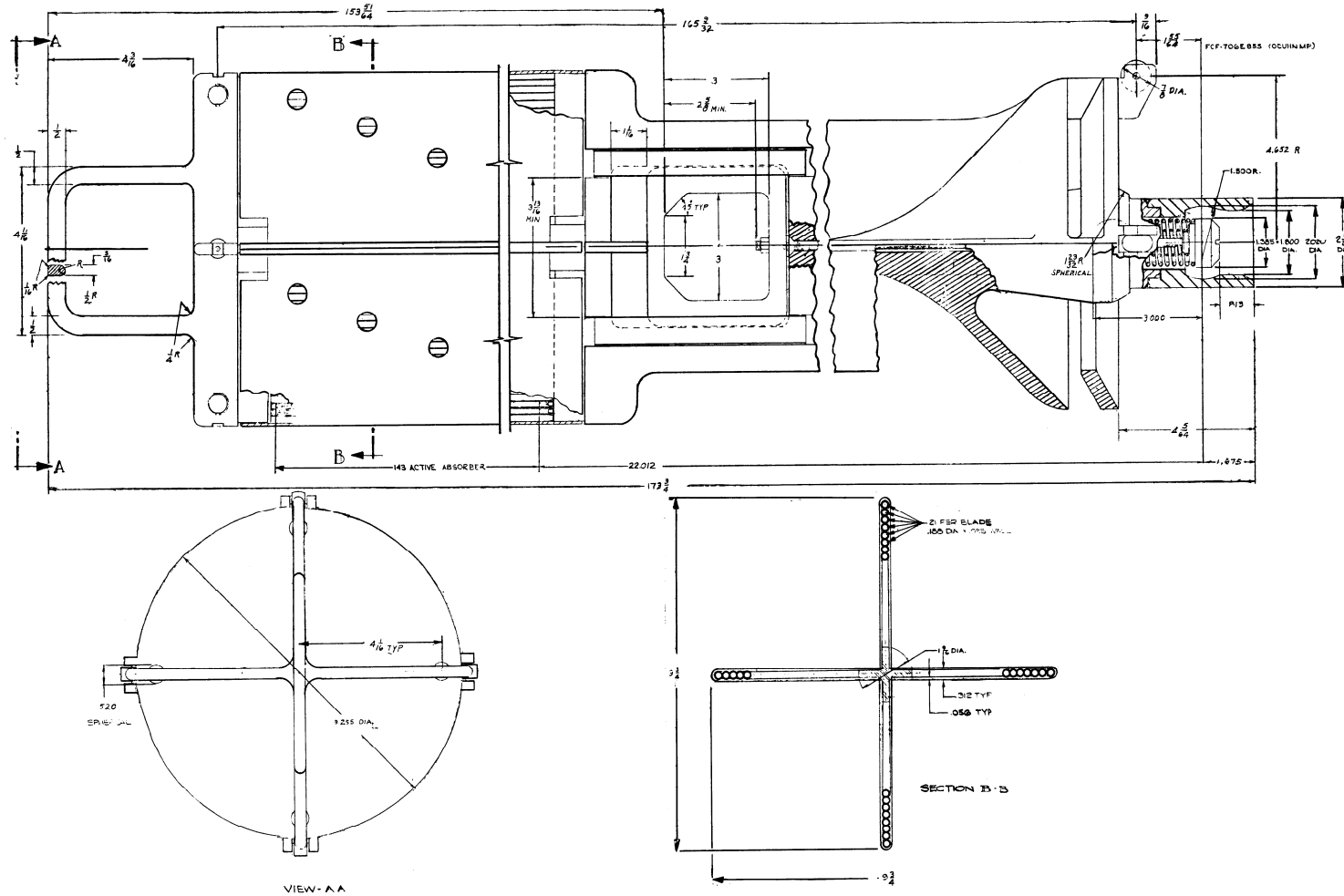
**FUEL PREPARATION MACHINE**



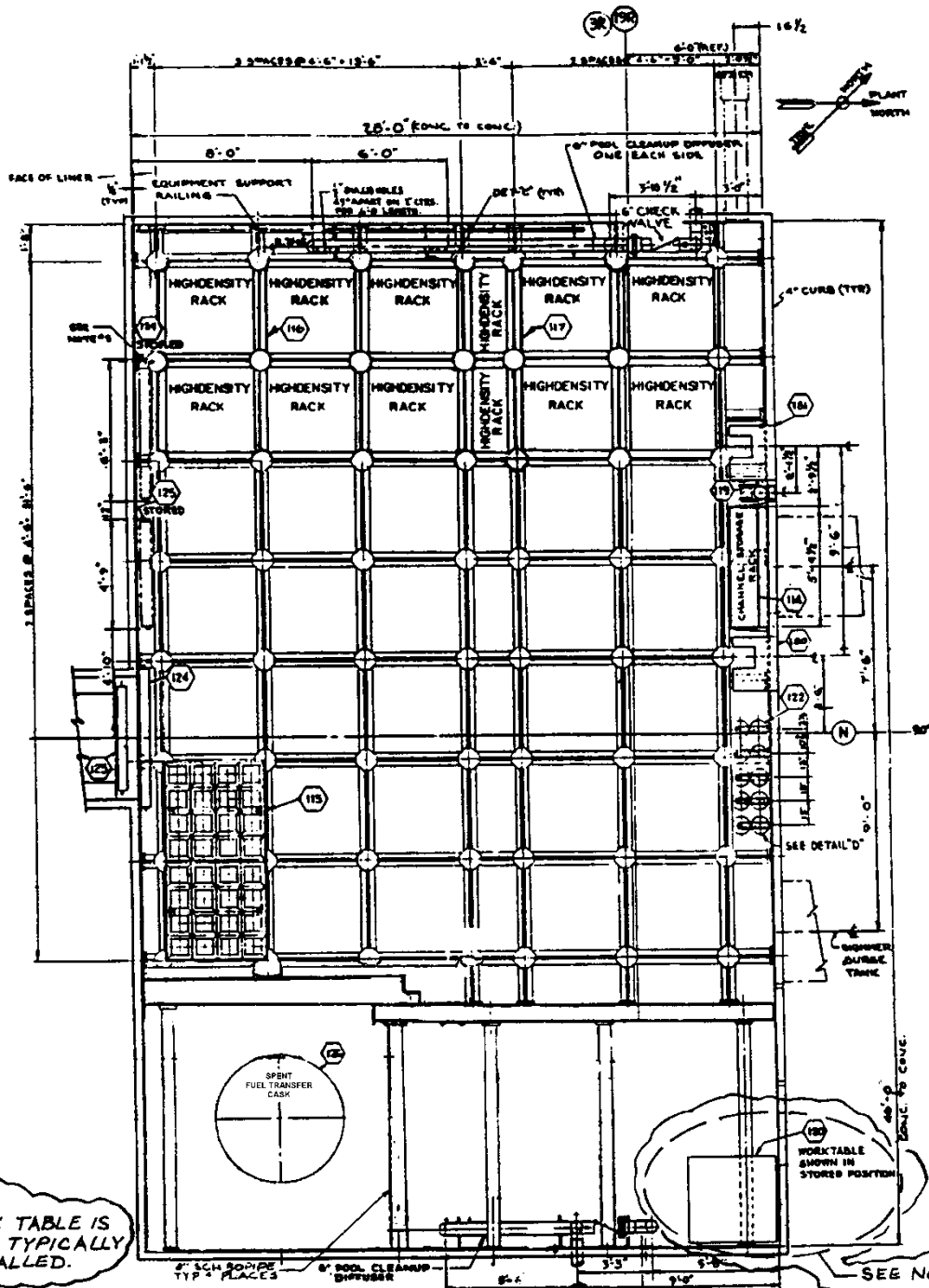
- NOTES:**
1. AIR HOIST LUBRICATION PER MANUFACTURERS INSTRUCTIONS ON HOIST NAMEPLATE.
  2. OPTIONAL MOUNTING OF CHANNEL BOLT STORAGE FIXTURE DEPENDING ON FUEL POOL REQUIREMENTS.
  3. MATERIAL TO BE B308 OR EQUIVALENT. (ASTM B209 ALLOY 6061 TEMPER T6 IN AN ALLOWABLE SUBSTITUTE, HOWEVER YIELD STRENGTH MUST BE  $\geq 18$  KSI).
  4. ADJOINING SURFACES TO BE FLUSH.
  5. DIMENSIONAL TOLERANCES  $\pm 1/16"$  UNLESS OTHERWISE NOTED.
  6. DETAILS SHOWN ARE FOR THE EAST - SIDE "A" FUEL PREPARATION MACHINES (FPM). DRAWING F-04197 PROVIDES ALTERNATE DETAILS FOR THE WEST - SIDE "B" FPMs. THESE ALTERNATE DETAILS DO NOT AFFECT OR ALTER THE DESIGN, FUNCTION OR METHOD OF PERFORMING THE FPM AS DESCRIBED IN THE UFSAR.
  7. INSTALLATION OF THE FPMs WITHOUT THE LOWER SUPPORT INSTALLED (SEE SECTION B-B) HAS BEEN EVALUATED AS ACCEPTABLE BY EERs 93-0496, 94-0066 AND ESR 98-00044. WHEN FPMs ARE INSTALLED WITHOUT THE LOWER SUPPORT, SPENT FUEL BUNDLES ARE NOT TO BE LOCATED WITHIN THREE FEET OF THE CENTERLINE OF THE FUEL PREP MACHINE IN THE FIRST ROW ON THE SPENT FUEL RACKS.



**OUTLINE - CONTROL ROD (ORIGINAL EQUIPMENT DESIGN)**



**SPENT FUEL POOL GRID STRUCTURE**

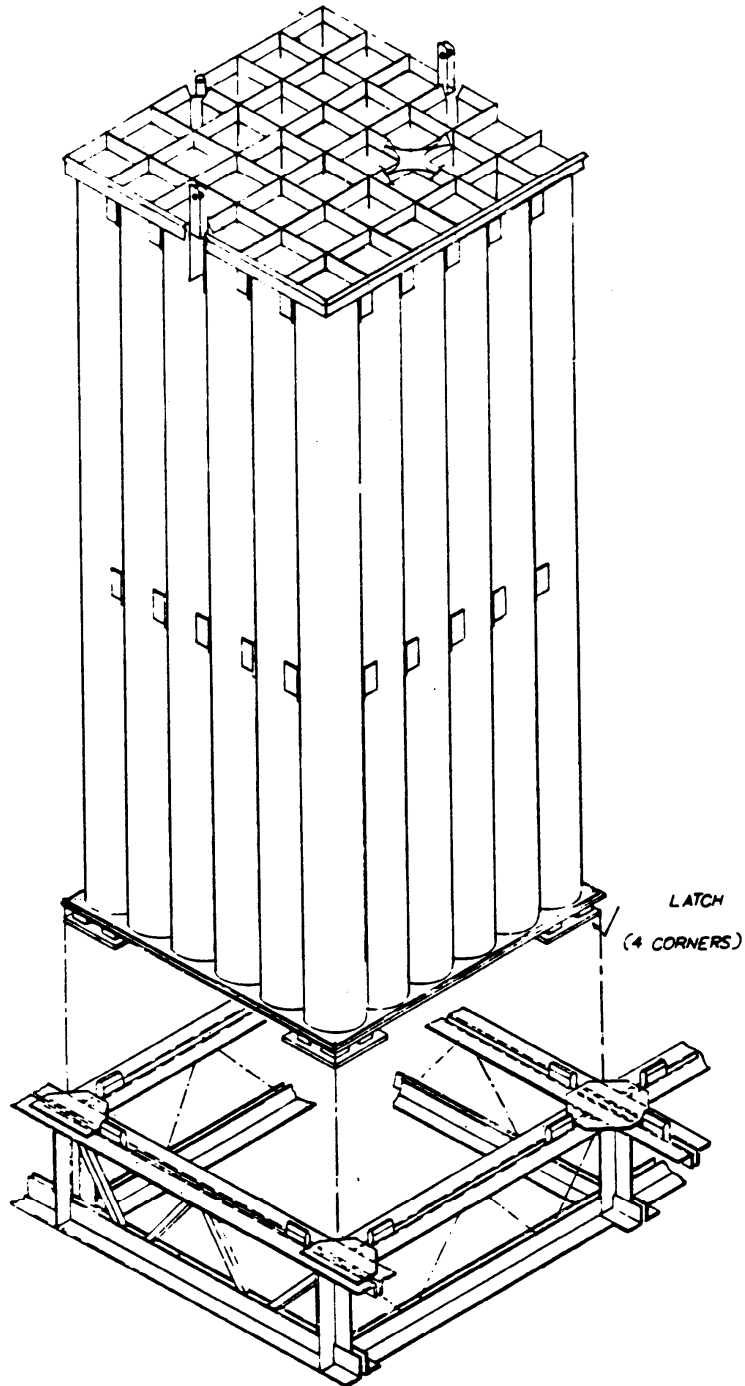


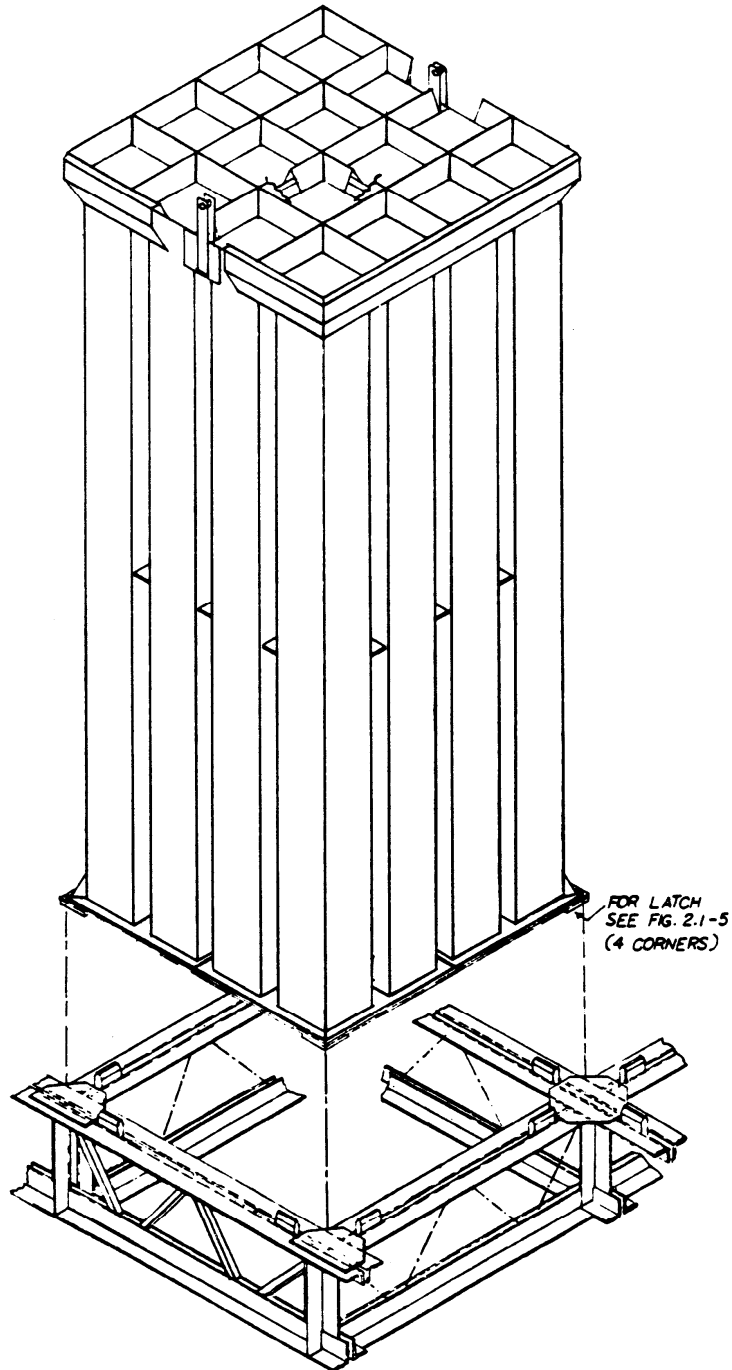
**NOTE:**  
 1. WORK TABLE IS NOT TYPICALLY INSTALLED.

SEE NOTE 1

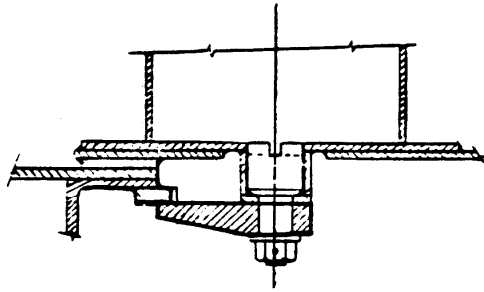
PLAN-BOTTOM OF POOL - EL. 78'-7'

### 6 x 6 BWR RACK

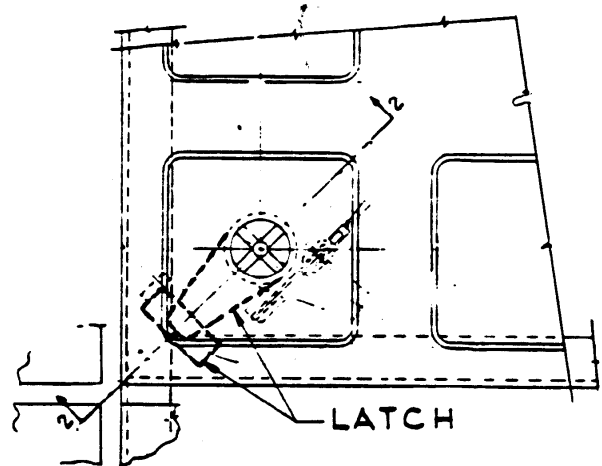


**PWR RACK**

### FUEL RACK LATCH ASSEMBLIES

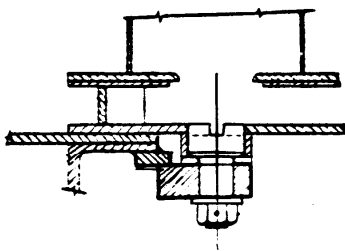


SECTION 2-2

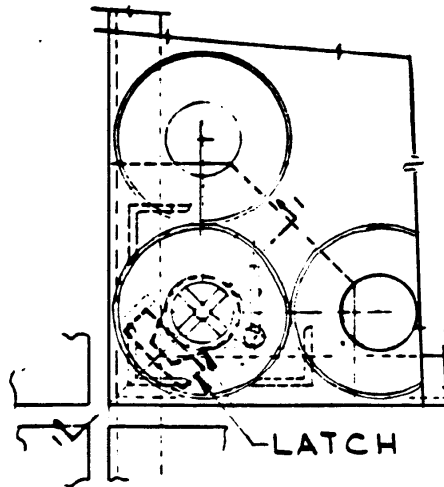


LATCH

LATCH ASSEMBLY - PWR FUEL RACK  
4 REQUIRED FOR EACH RACK



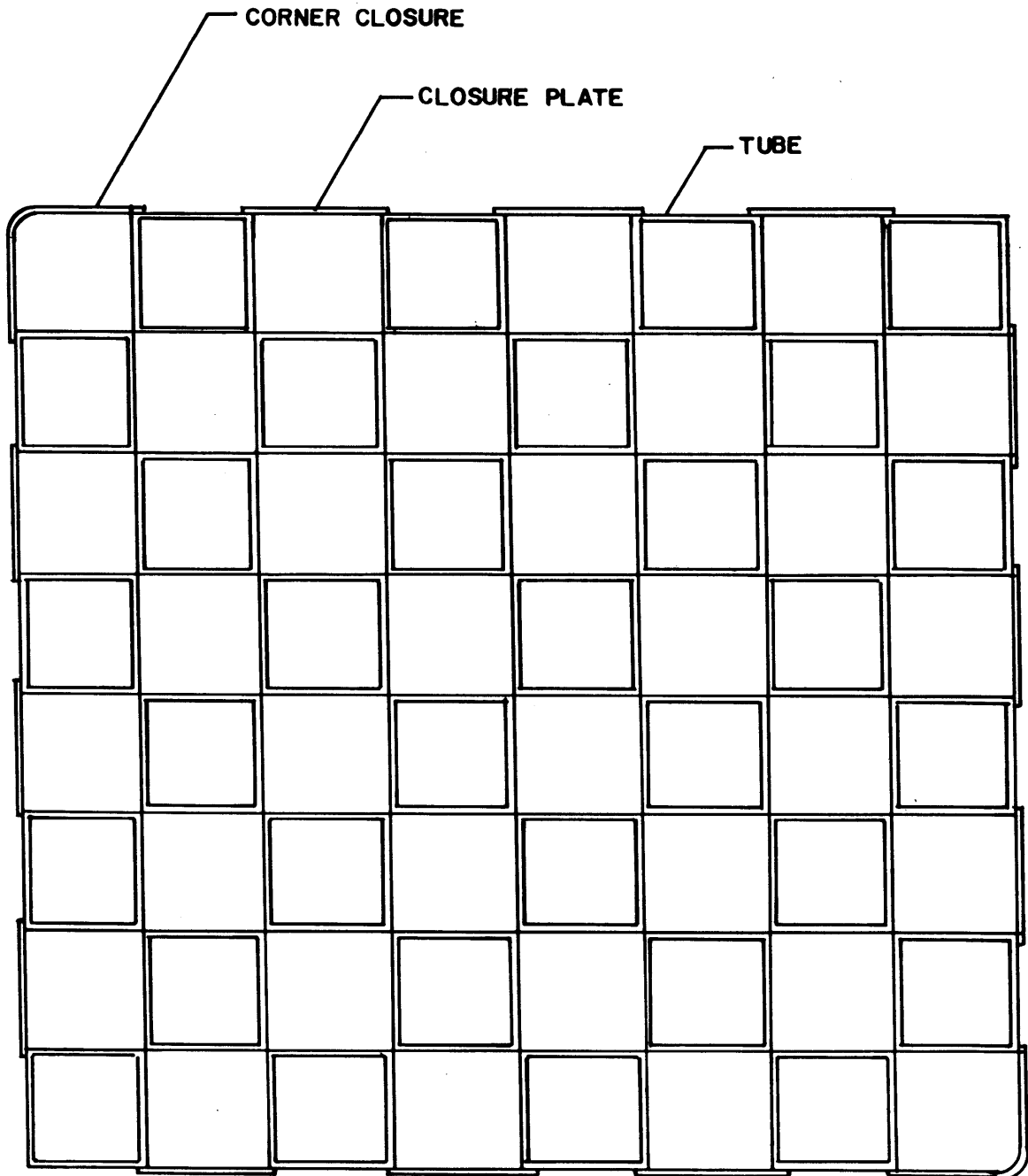
SECTION 1-1



LATCH

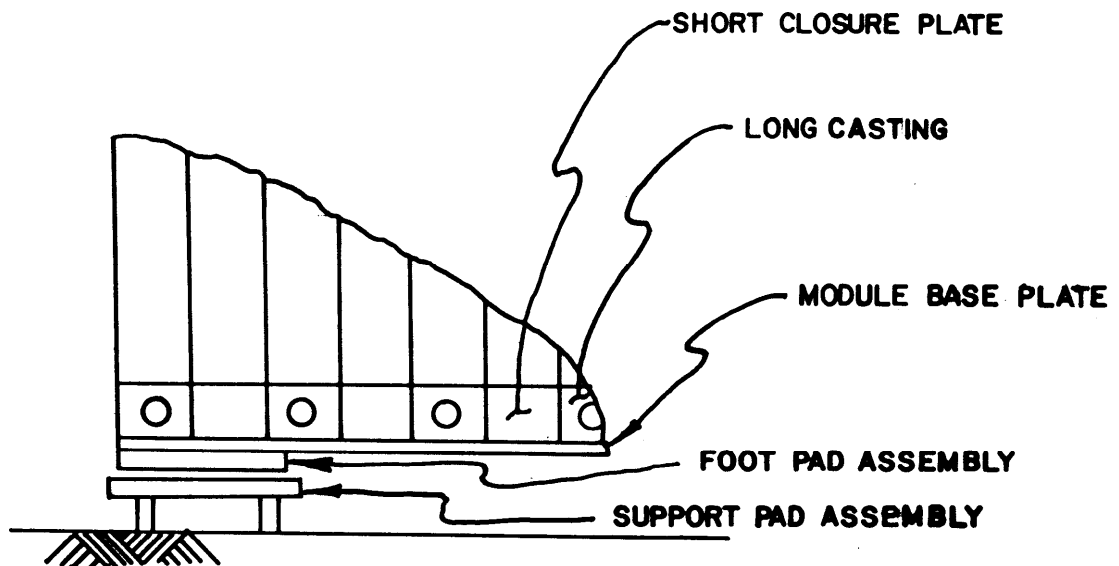
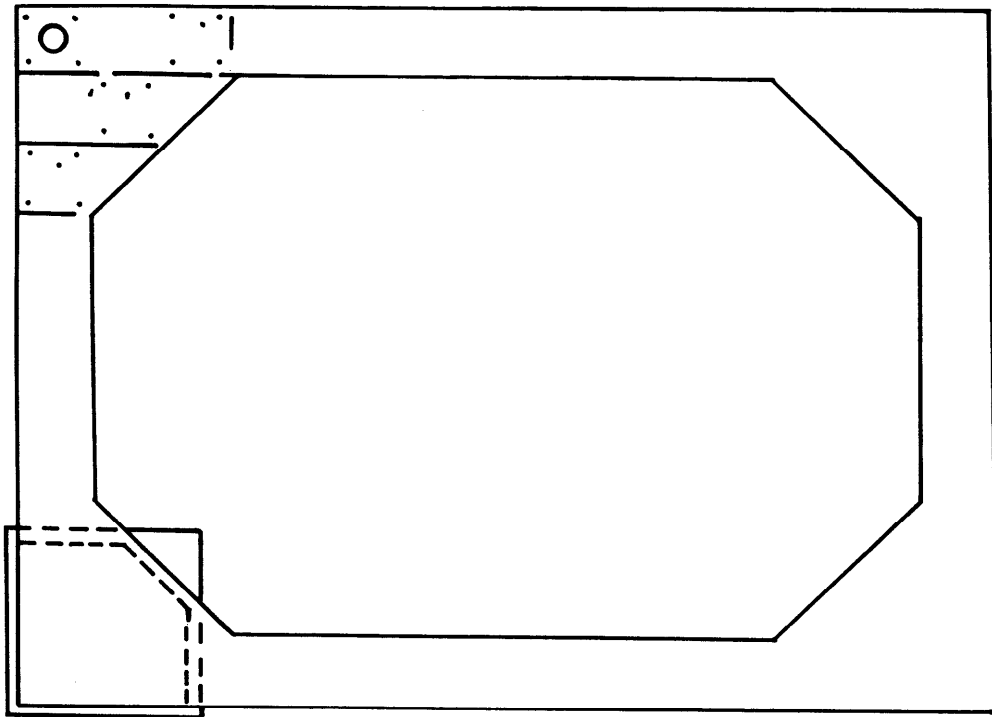
LATCH ASSEMBLY - NON-HDFS BWR FUEL RACK  
4 REQUIRED FOR EACH RACK

### SCHMATIC OF TYPICAL HDFSS MODULE

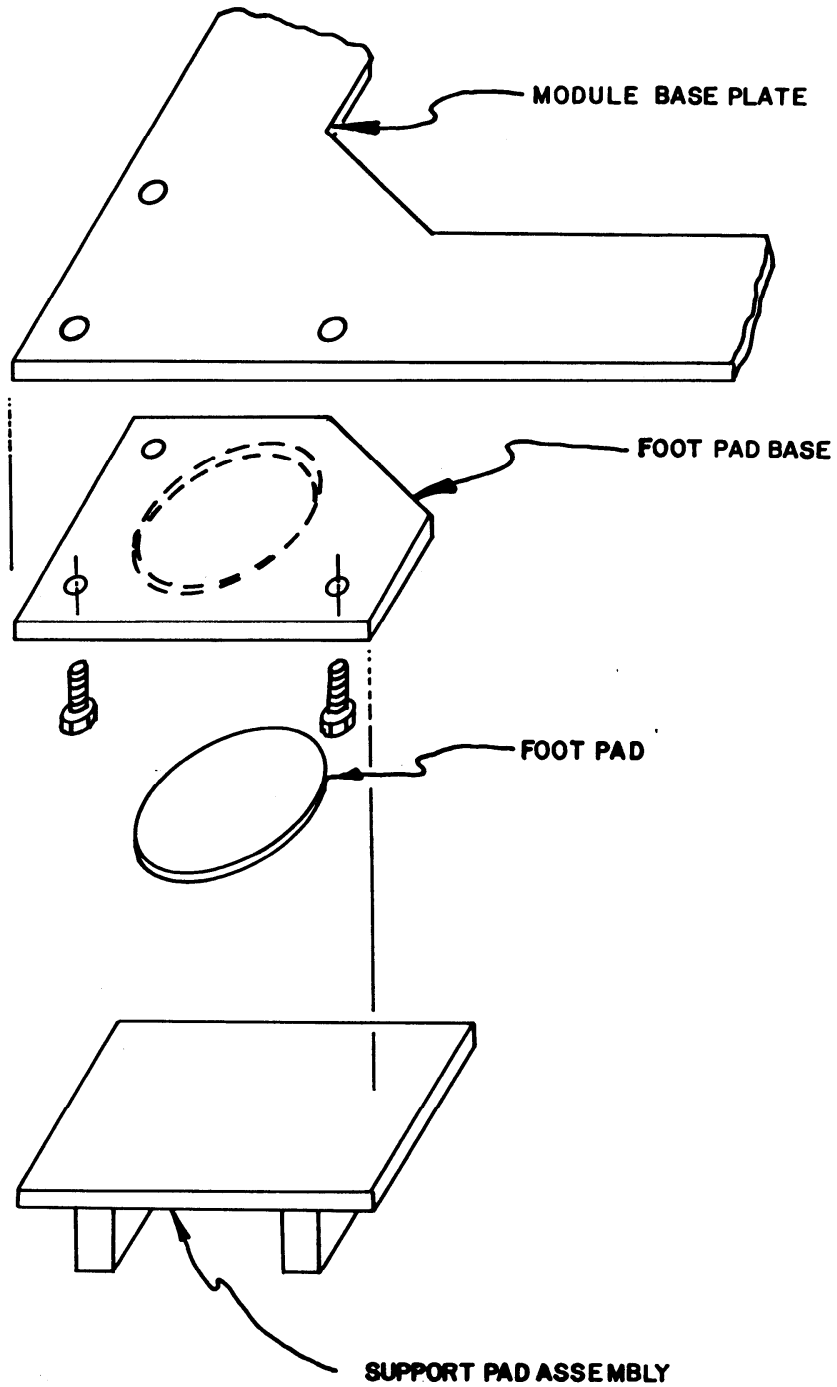


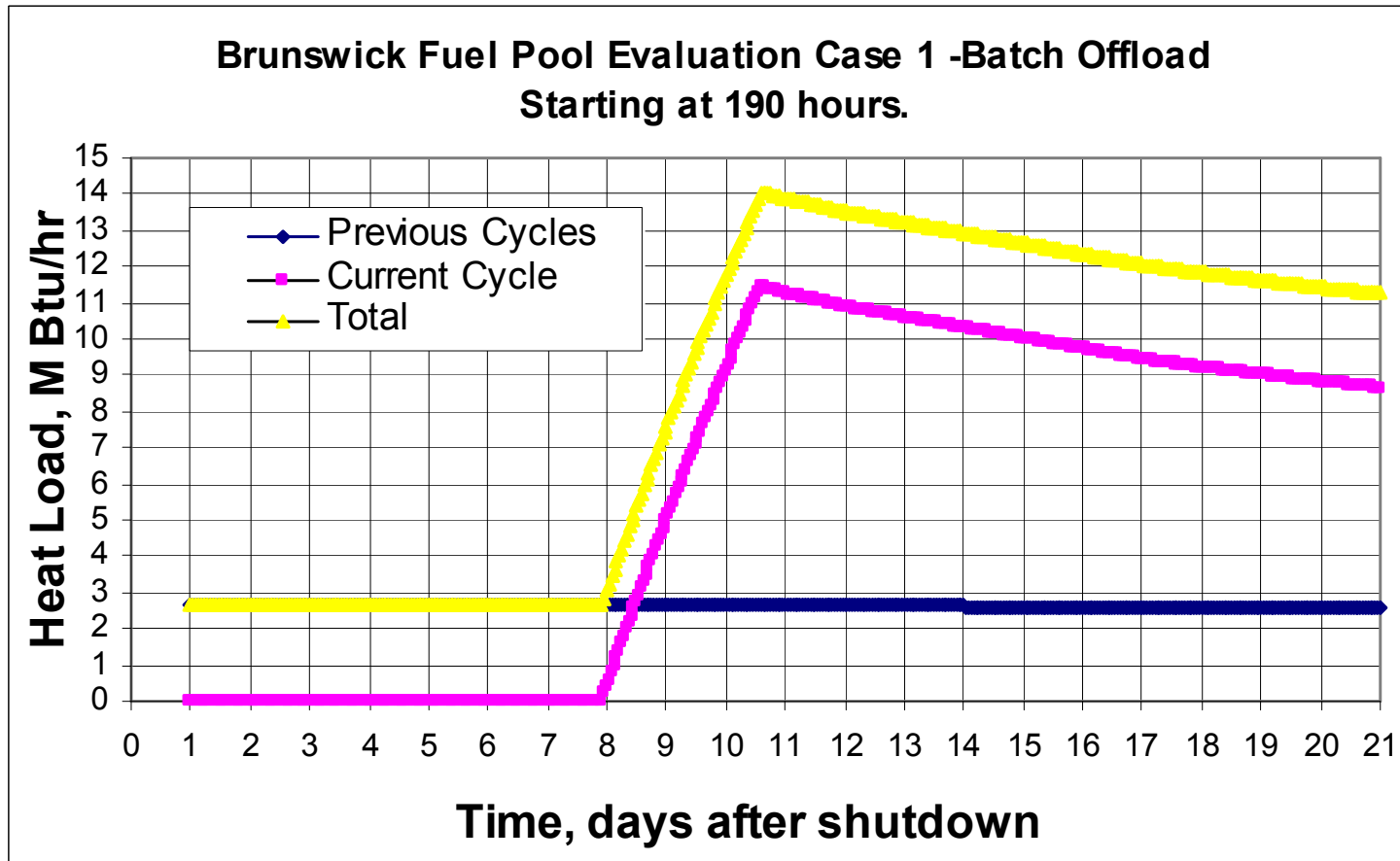


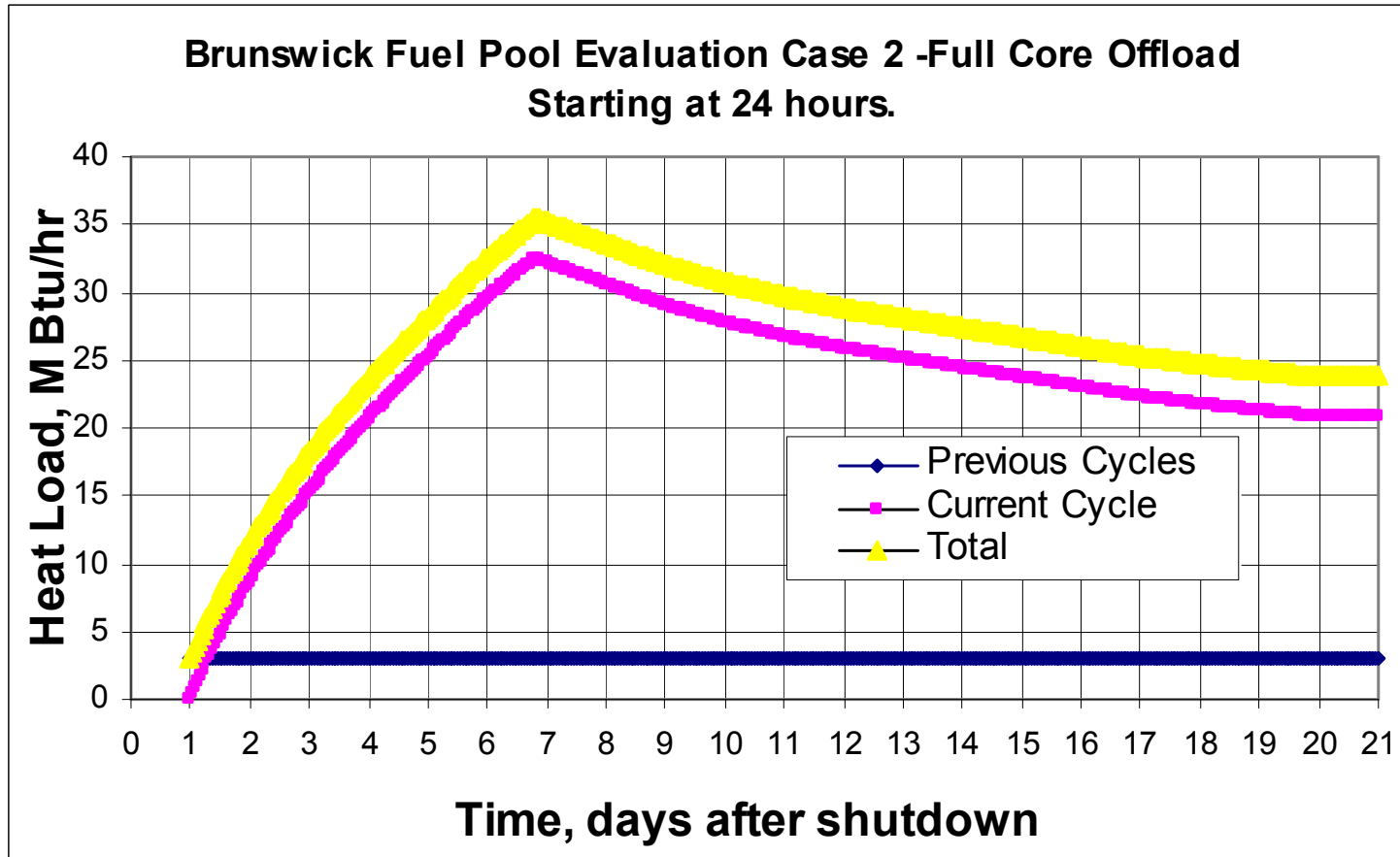
## HDFSS MODULE SUPPORT SYSTEM

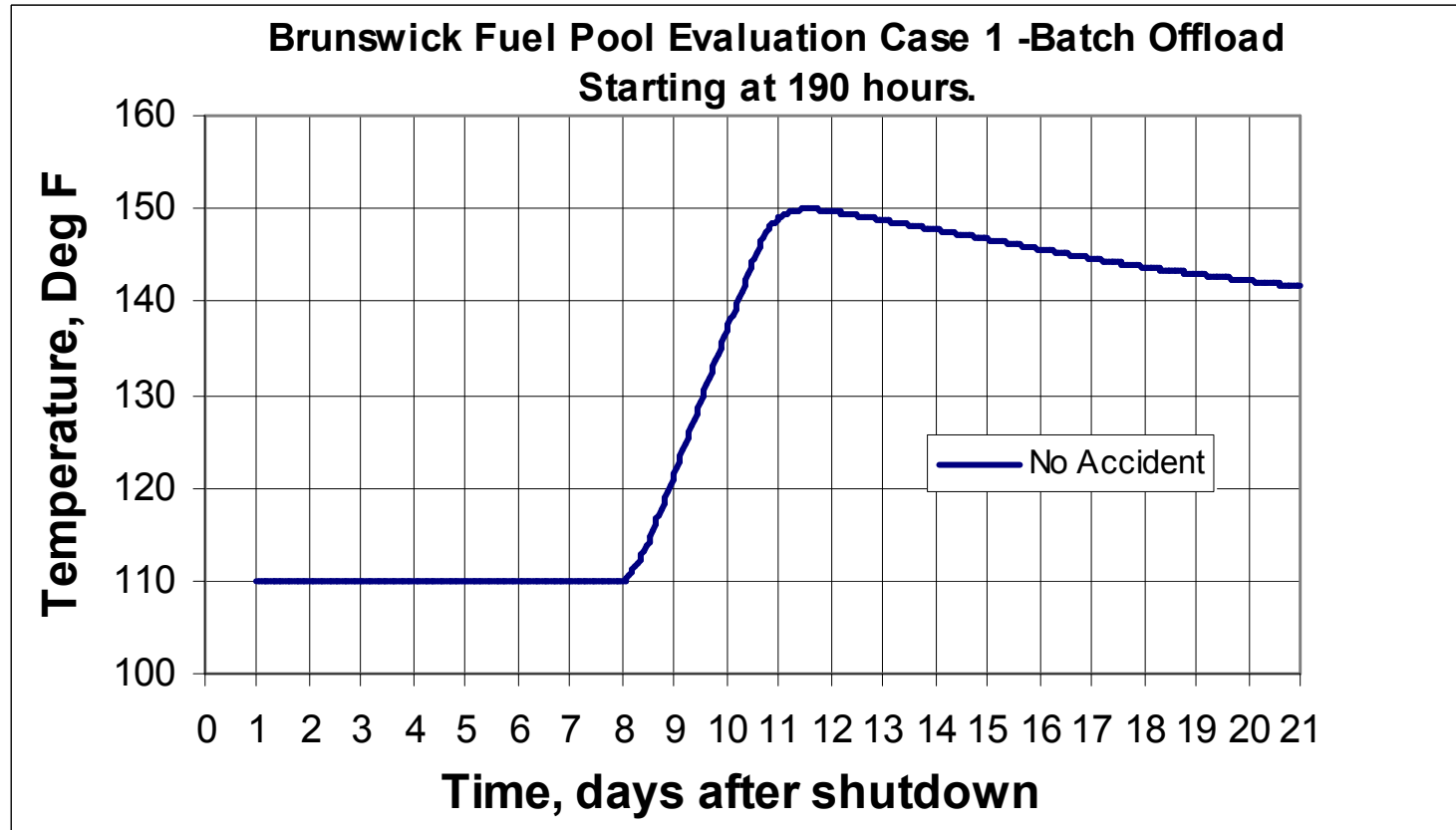


**HDFSS MODULE SUPPORT SYSTEM DETAIL**





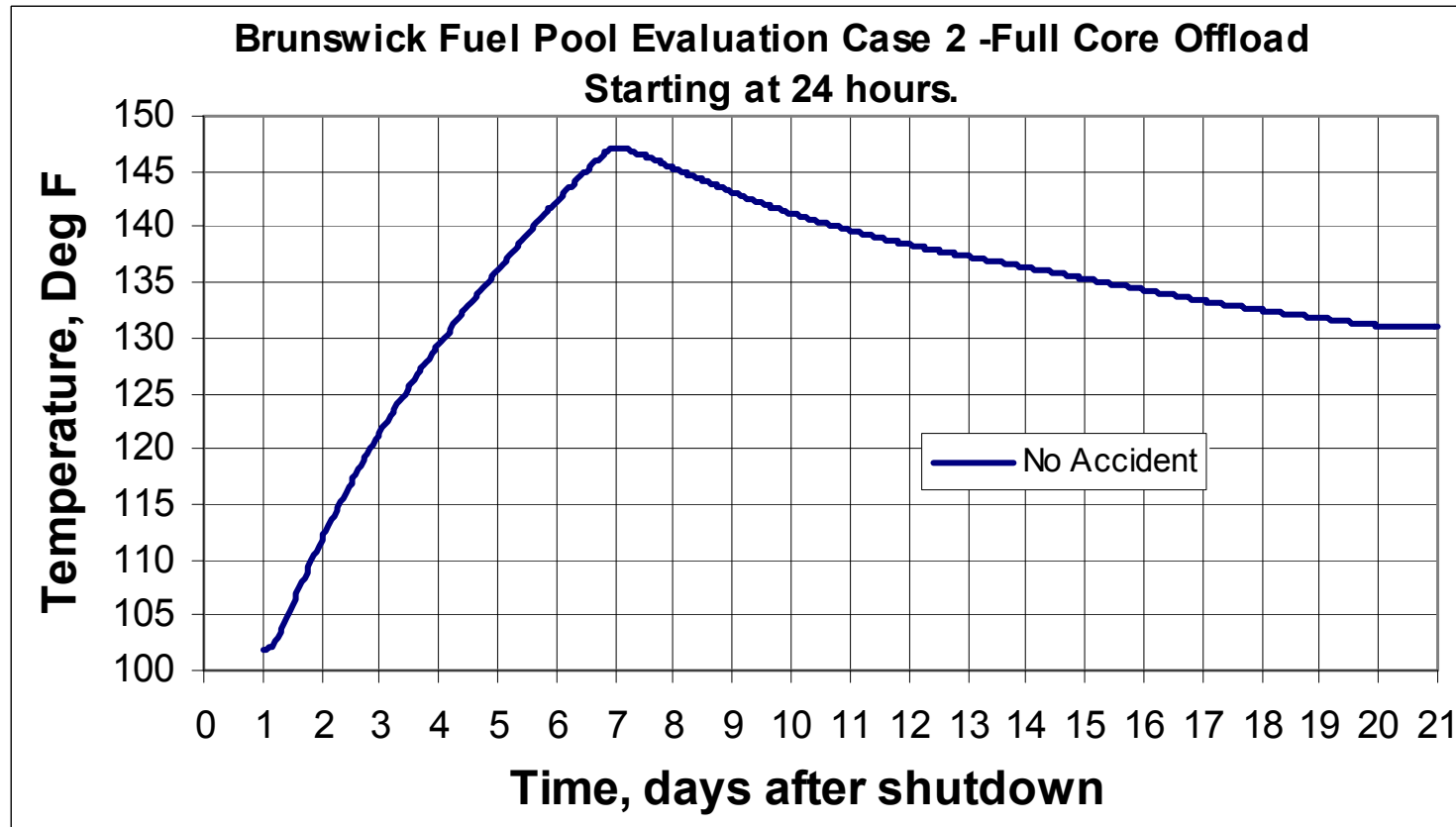


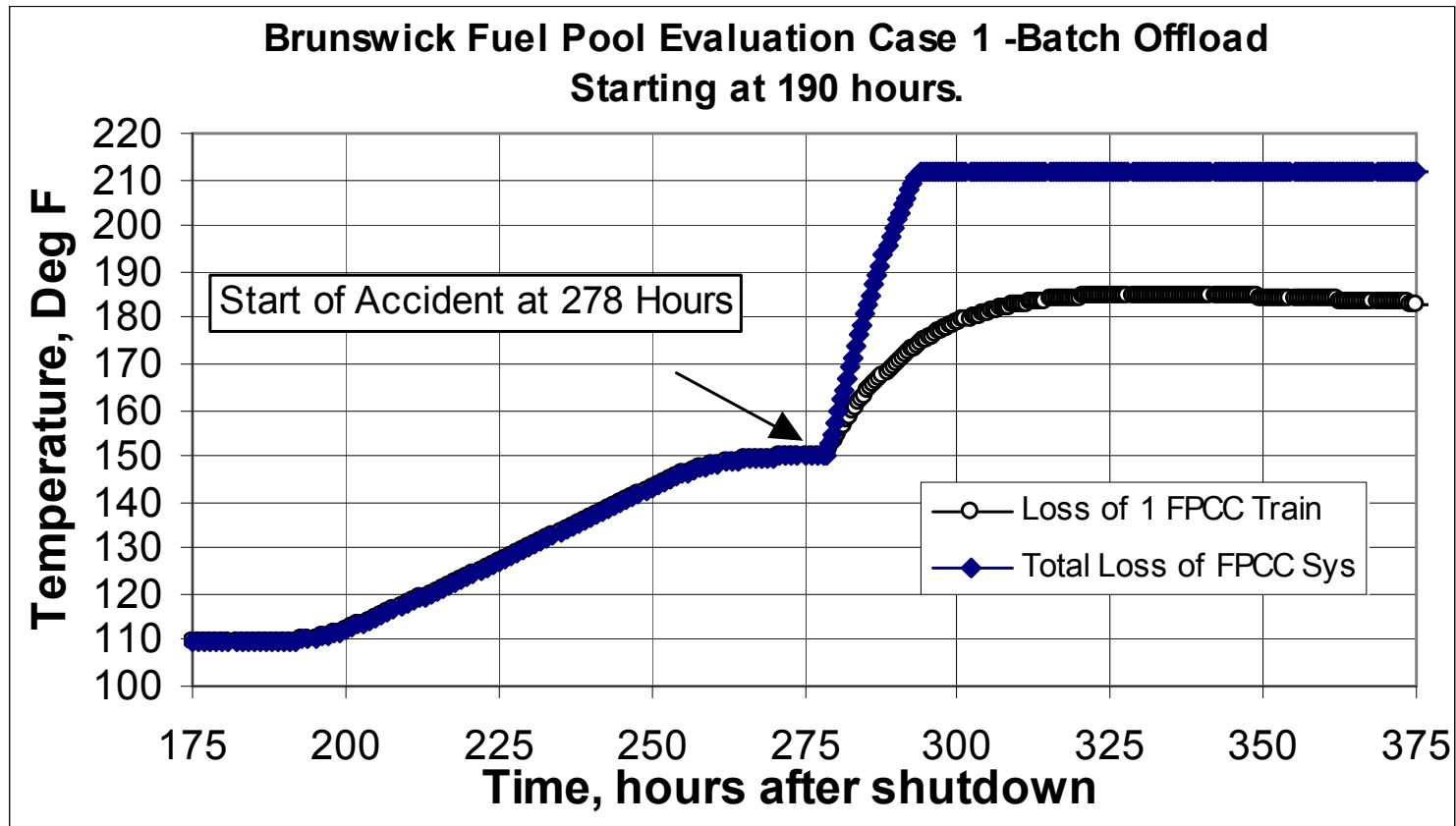




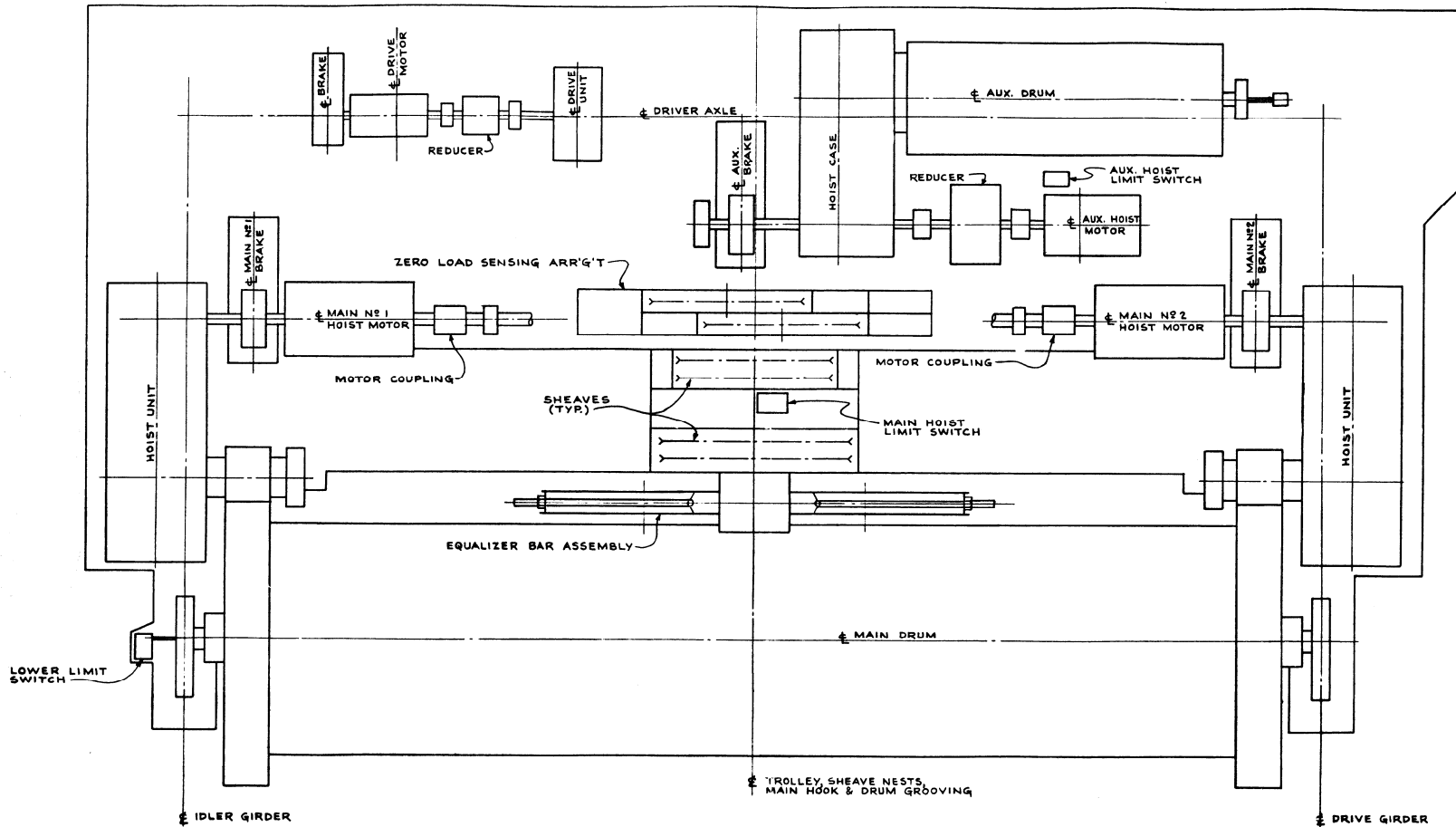
**UPDATED FSAR**  
**AUXILIARY SYSTEMS**  
**CHAPTER 9 FIGURES**

Revision: 24  
Figure: 9-18  
Page: 1 of 1

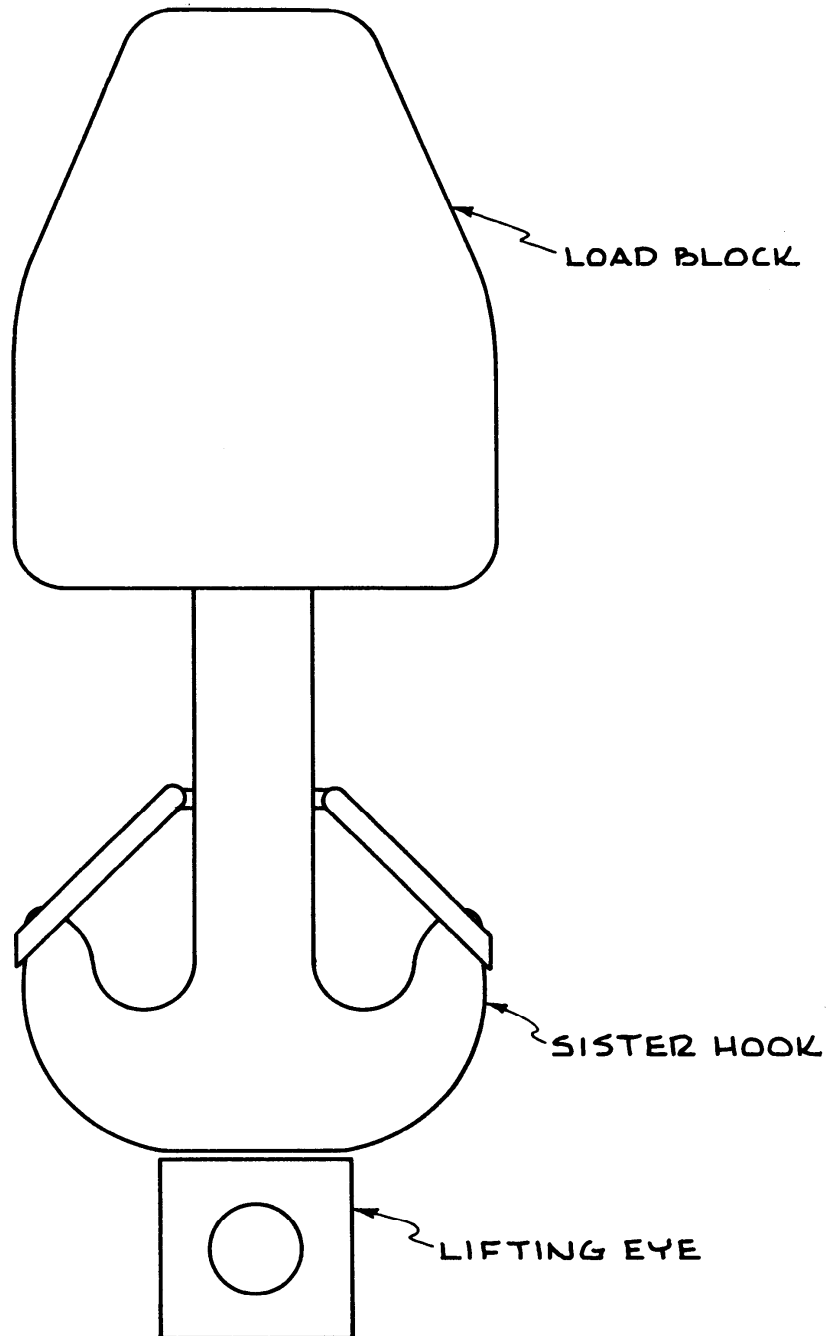




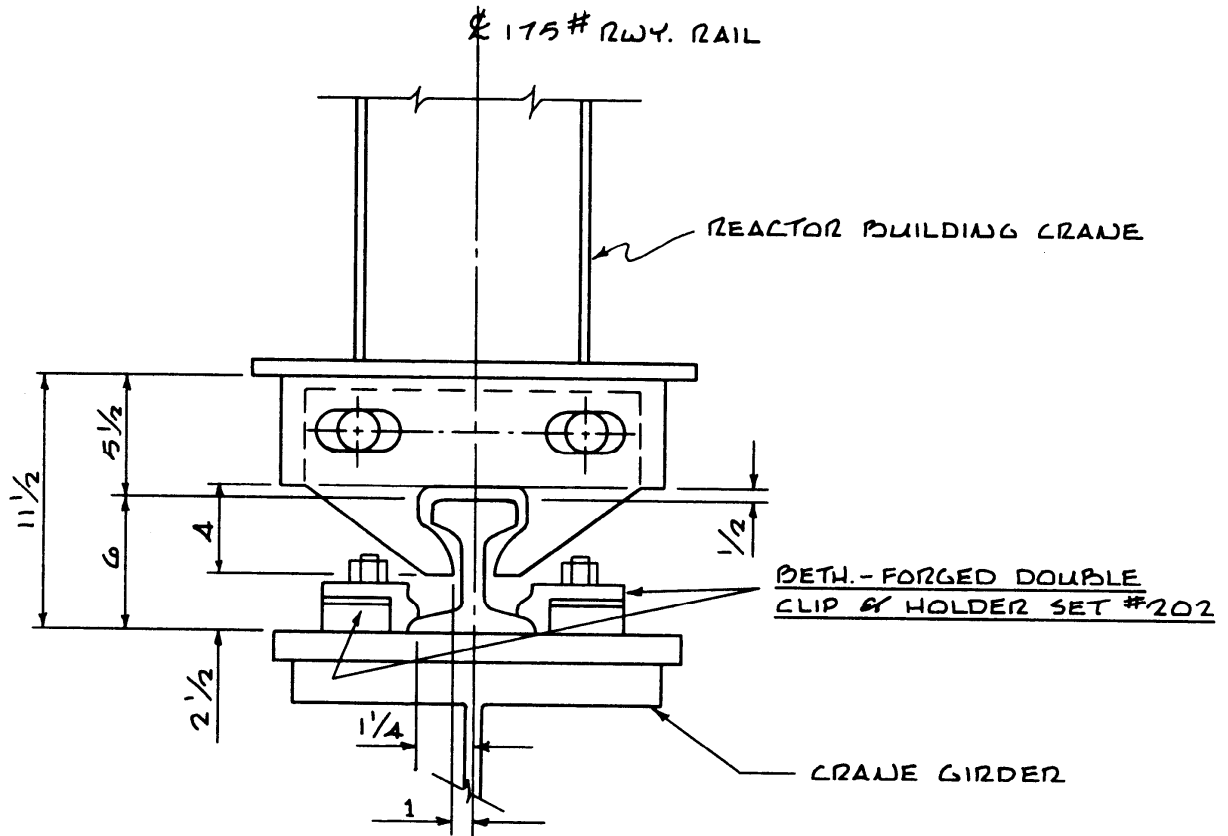
**REDUNDANT FEATURES OF REACTOR BUILDING CRANE**





**REDUNDANT HOOK AND LOAD BLOCK**

### UPKICK LUG

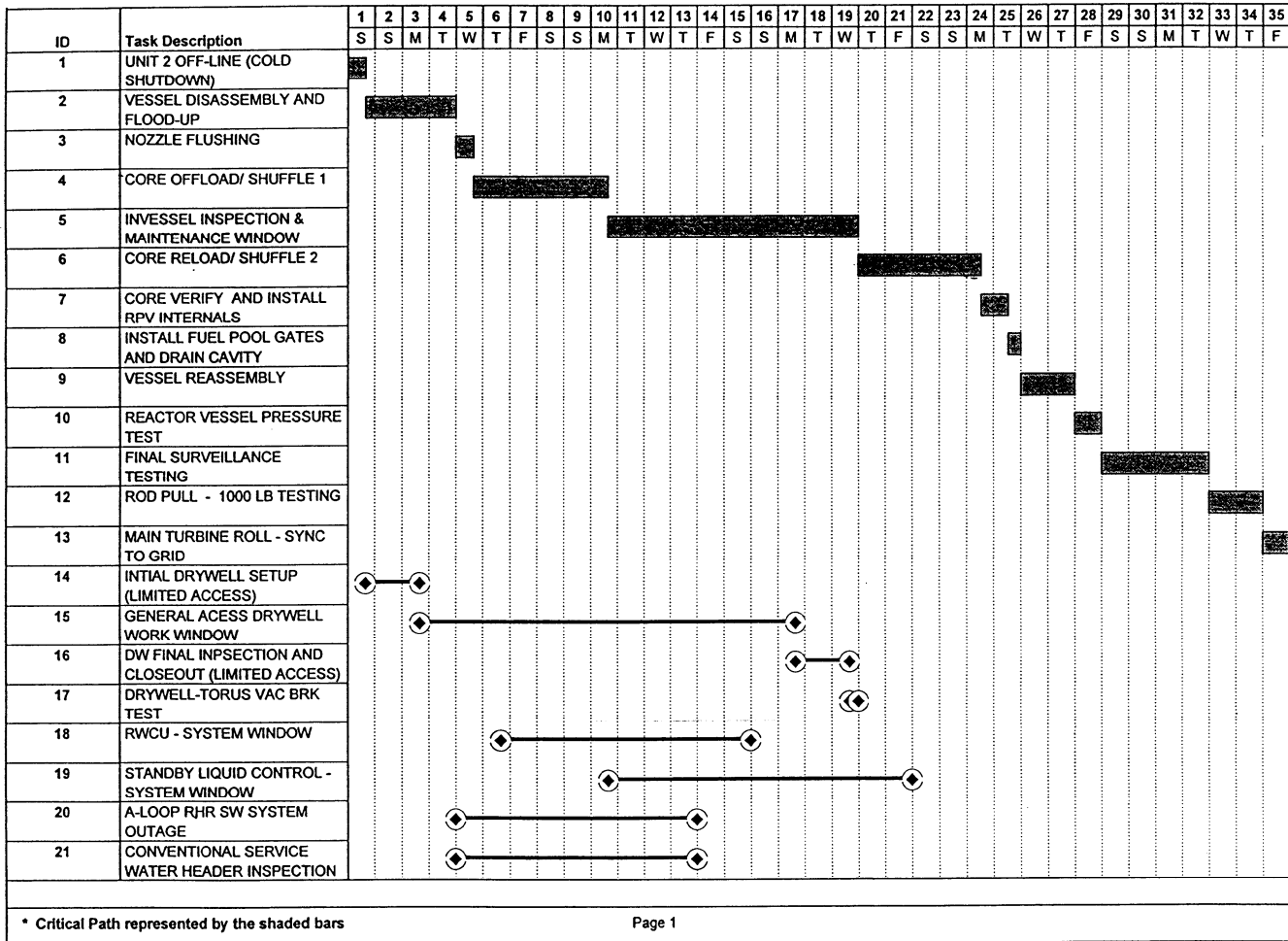




**UPDATED FSAR**  
**AUXILIARY SYSTEMS**  
**CHAPTER 9 FIGURES**

Revision: 24  
 Figure: 9-26  
 Page: 1 of 2

### TYPICAL 35 DAY OUTAGE WINDOW SCHEDULE

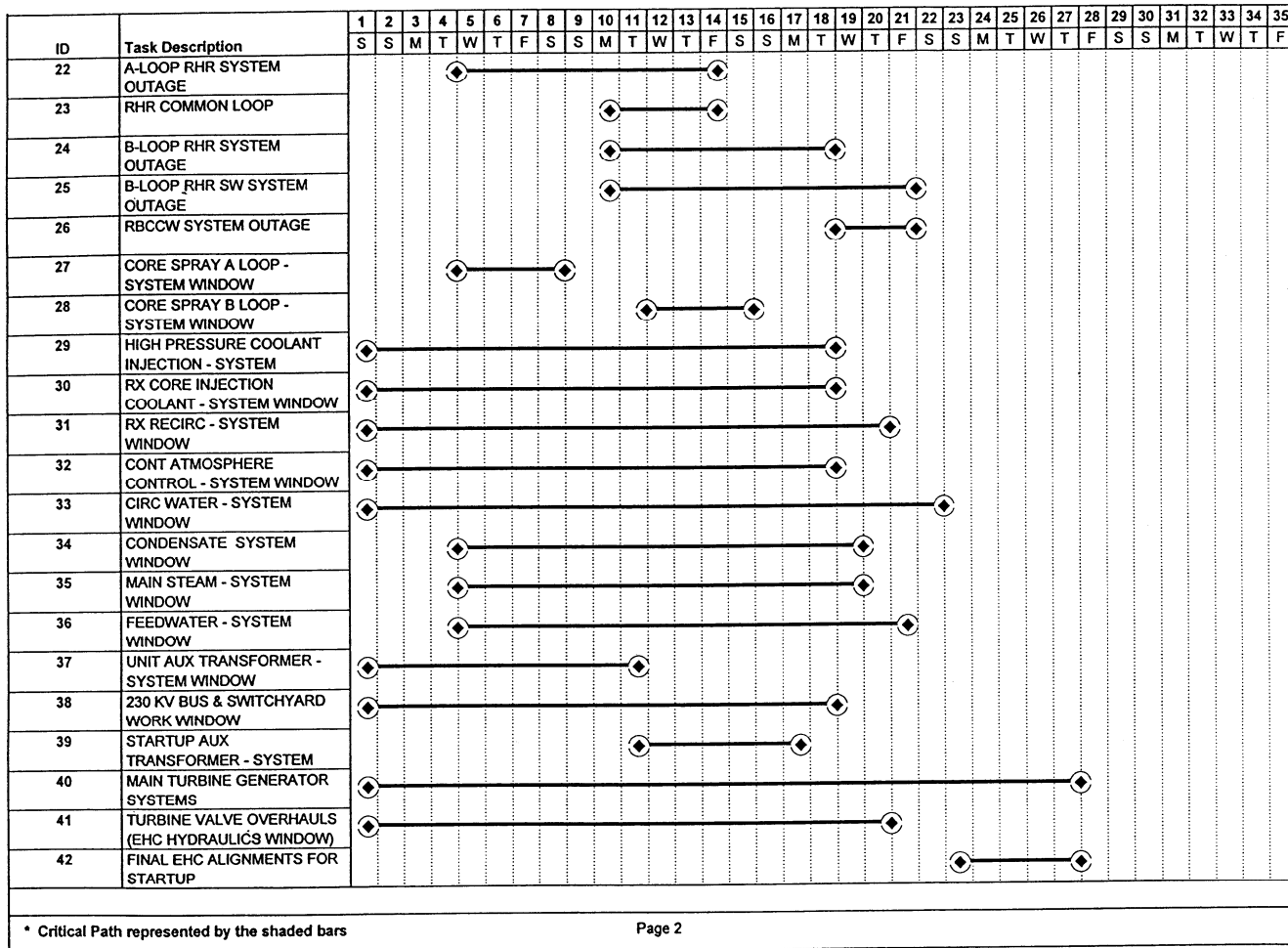




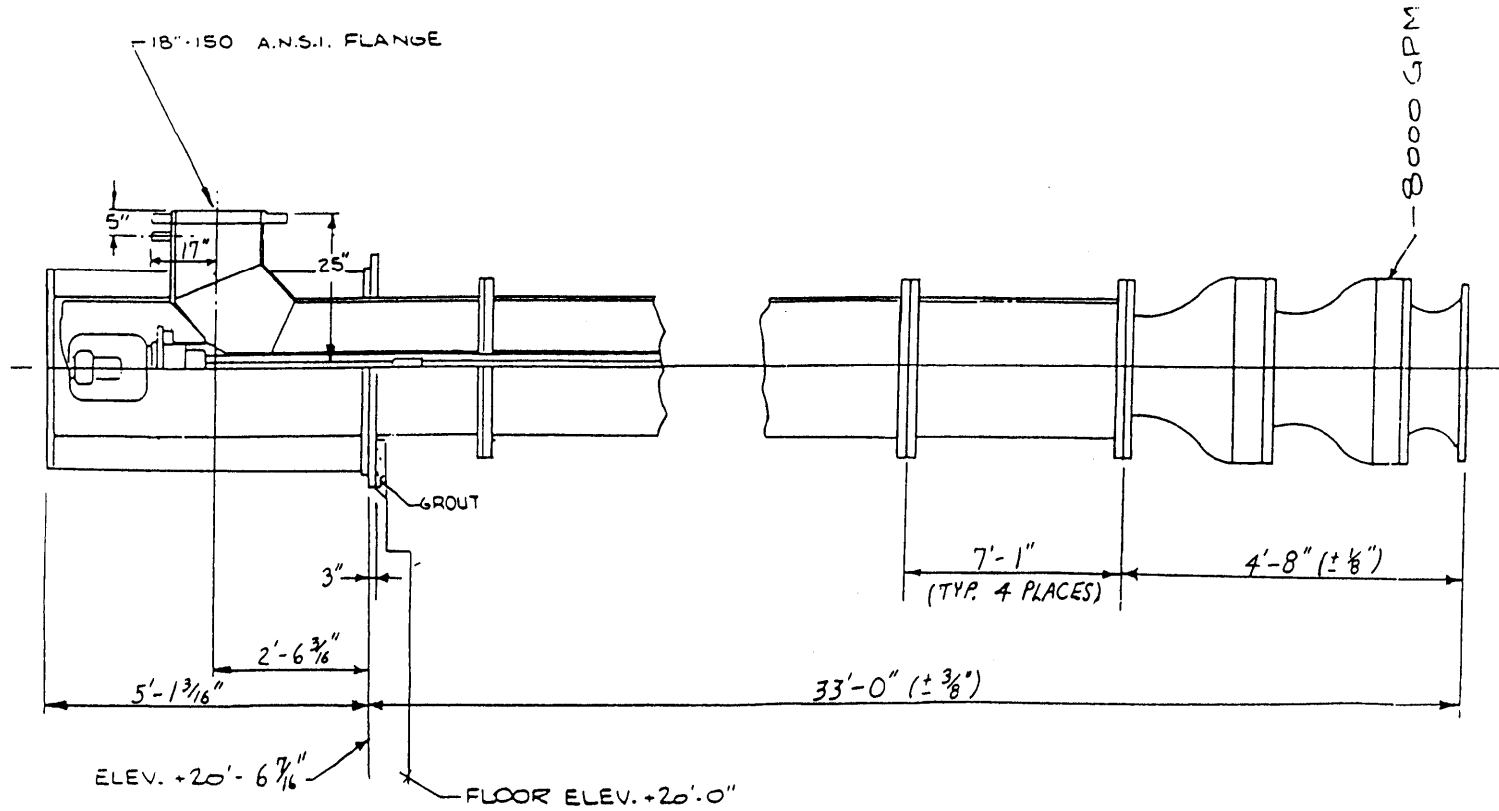
**UPDATED FSAR**  
**AUXILIARY SYSTEMS**  
**CHAPTER 9 FIGURES**

Revision: 24  
 Figure: 9-26  
 Page: 2 of 2

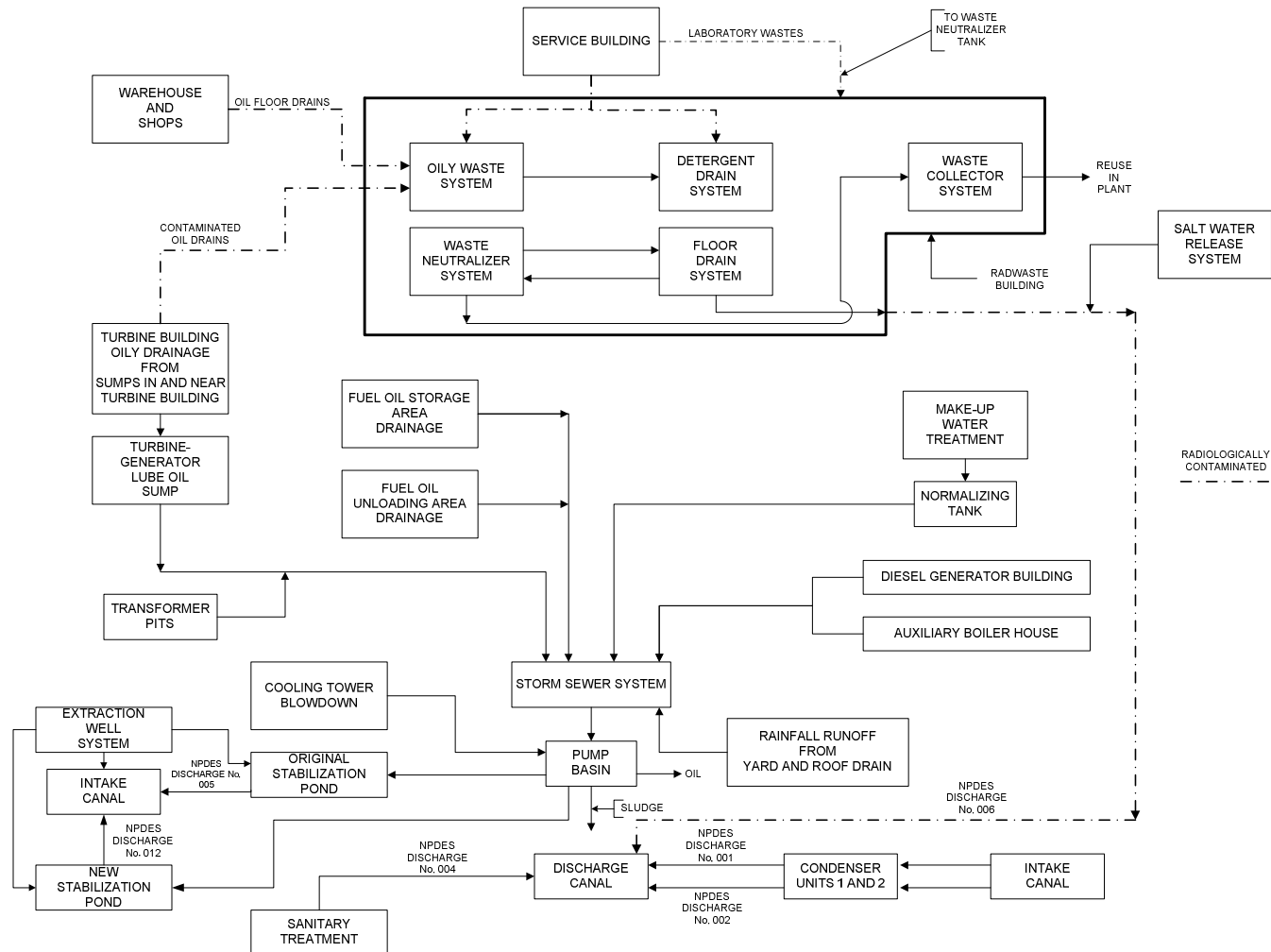
### TYPICAL 35 DAY OUTAGE WINDOW SCHEDULE



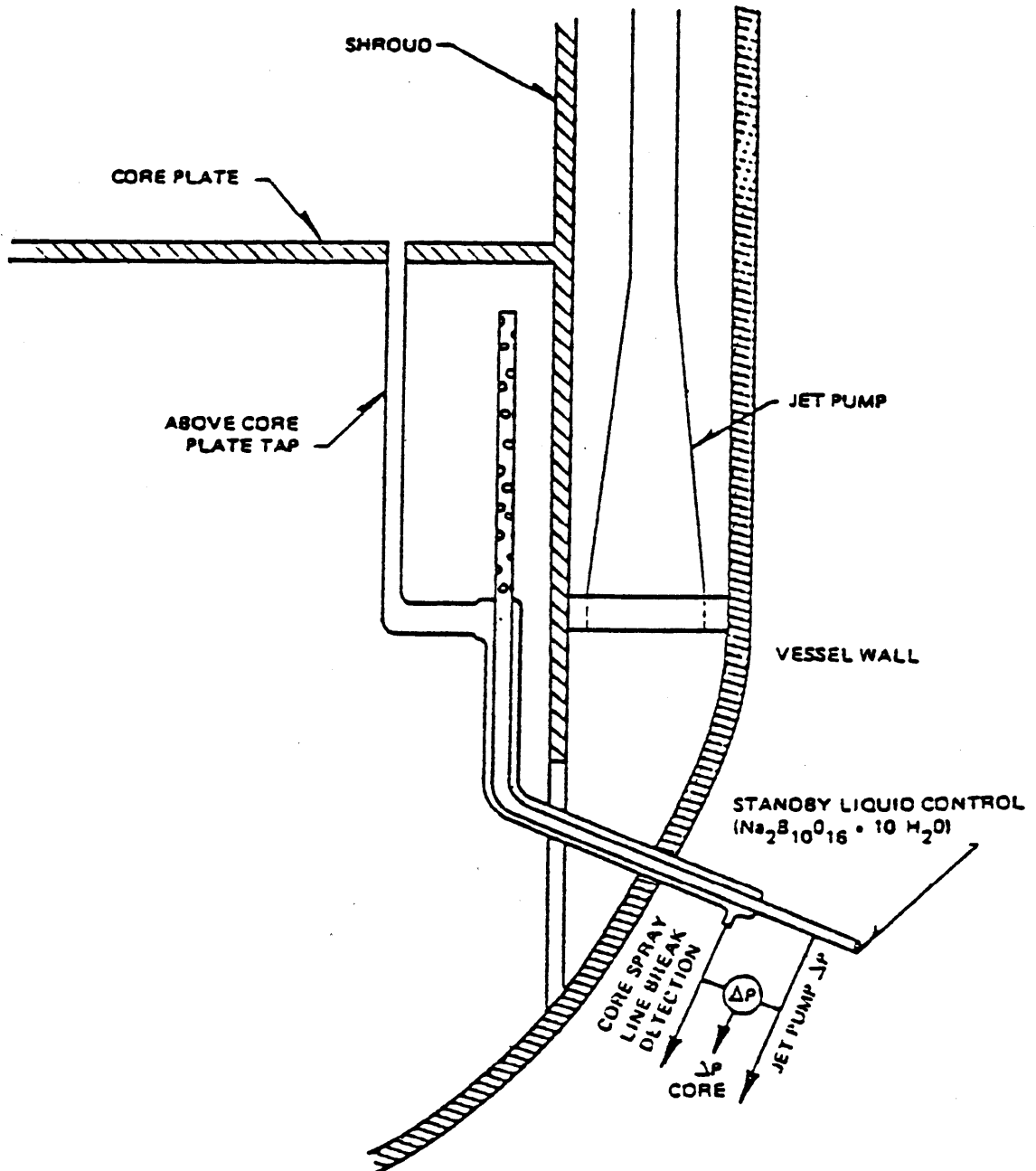
### SERVICE WATER PUMP DIMENSIONS



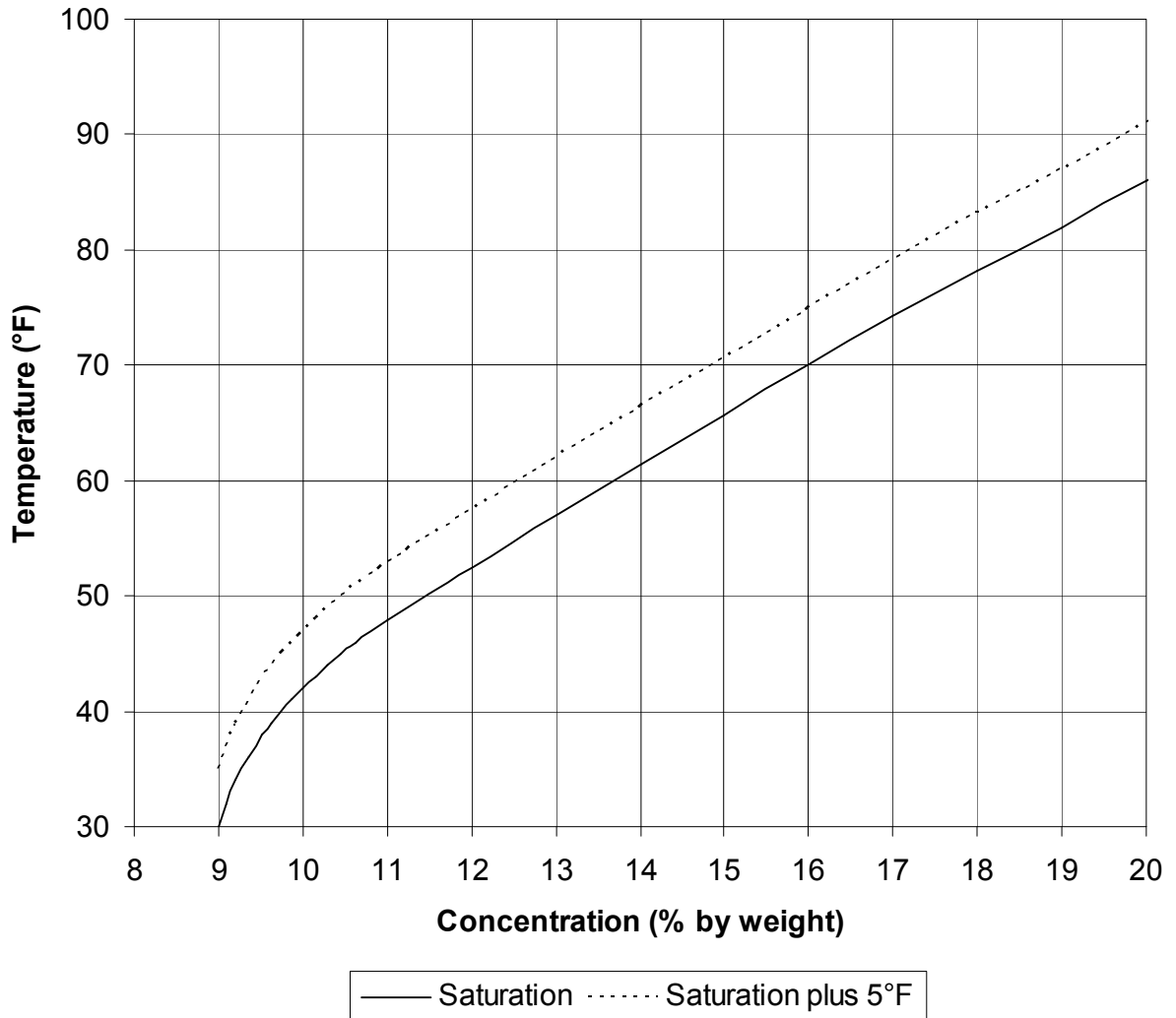
**BLOCK FLOW DIAGRAM - DRAINAGE SYSTEM**



### STANDBY LIQUID CONTROL CORE $\Delta P$ LINE



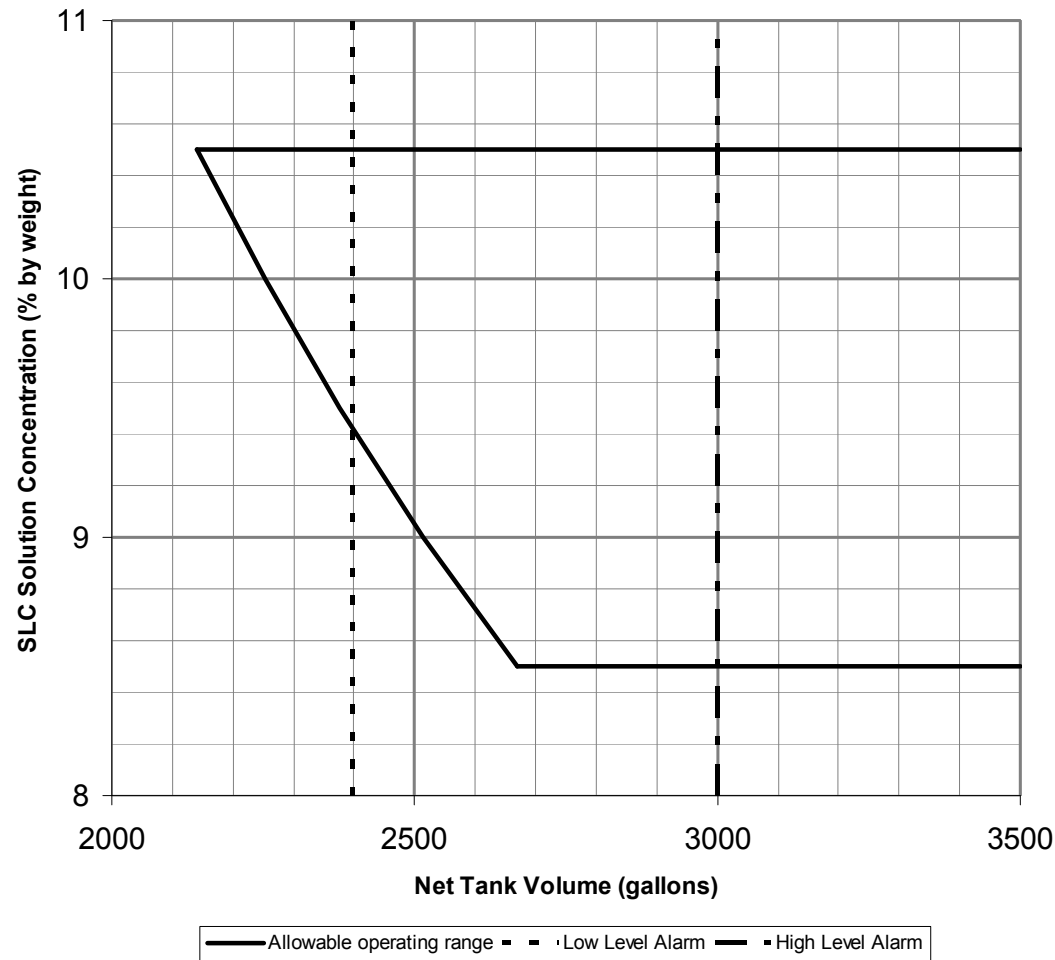
### SODIUM PENTABORATE SOLUTION



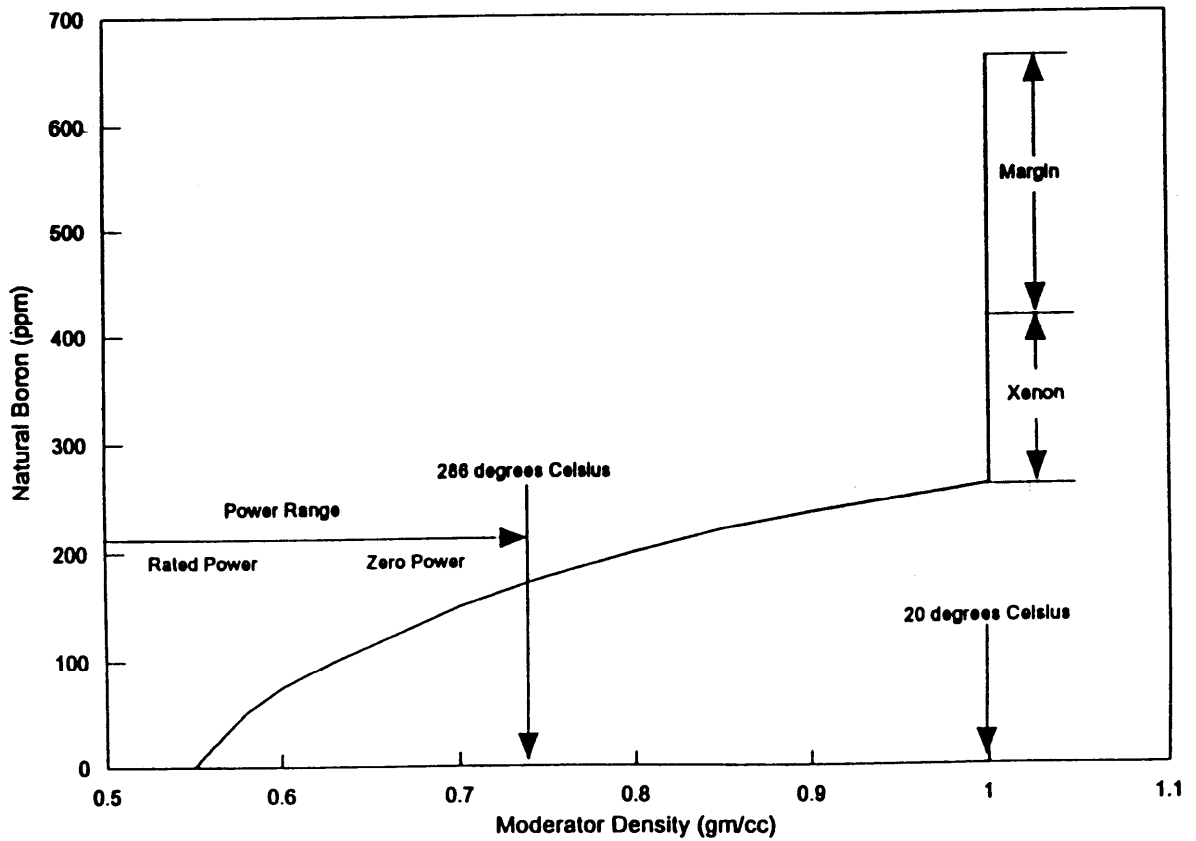




### SODIUM PENTABORATE SOLUTION VOLUME CONCENTRATION REQUIREMENTS



### BORON REQUIREMENTS OF A TYPICAL STANDBY LIQUID CONTROL SYSTEM





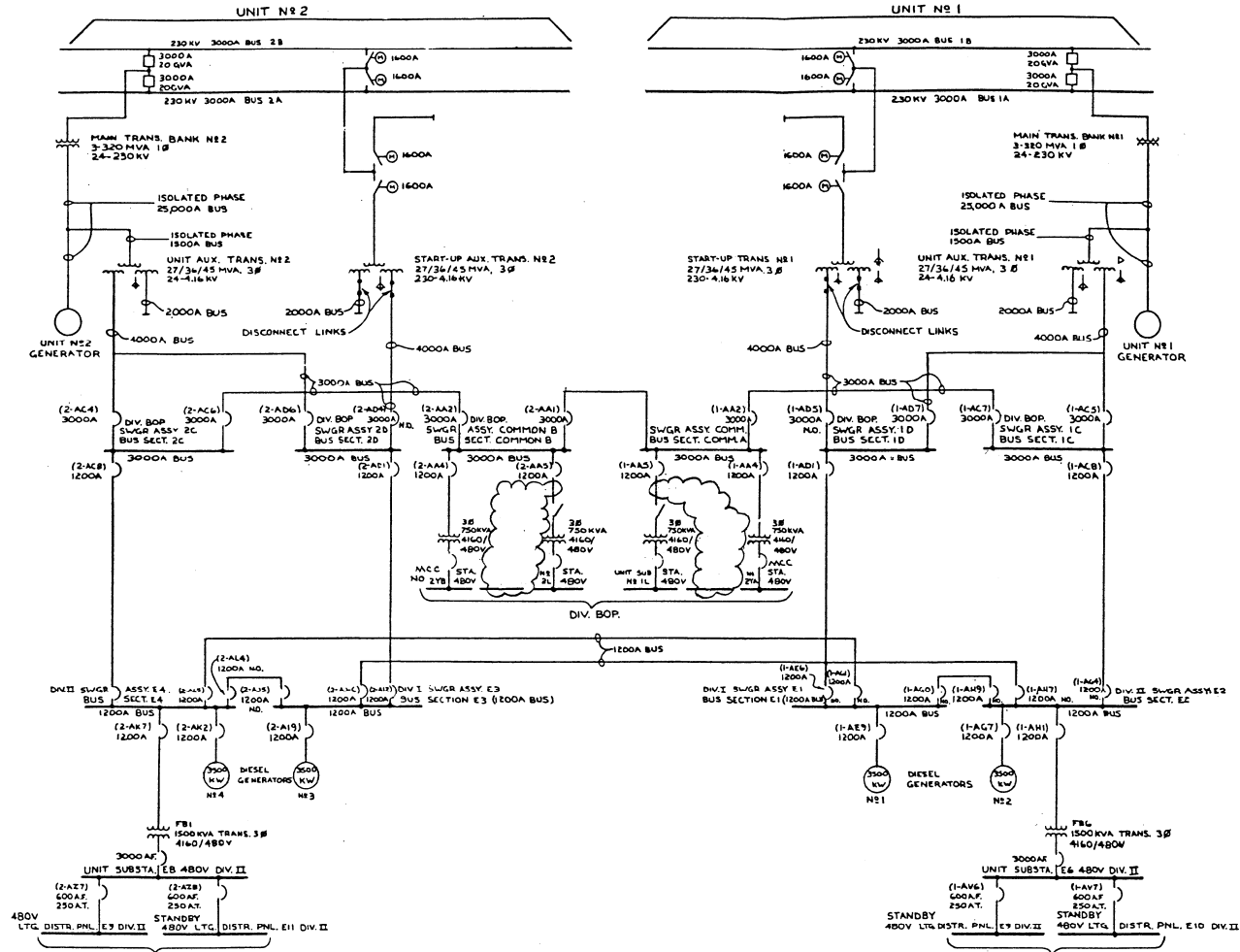
# UPDATED FSAR

## AUXILIARY SYSTEMS

### CHAPTER 9 FIGURES

Revision: 24  
Figure: 9-76  
Page: 1 of 1

## SINGLE LINE KEY AC LIGHTING DISTRIBUTION





# UPDATED FSAR

## AUXILIARY SYSTEMS

### CHAPTER 9 FIGURES

Revision: 24  
Figure: 9-78  
Page: 1 of 1

## DC SINGLE LINE EMERGENCY LIGHTING DISTRIBUTION

