

ATTACHMENT TO LICENSE AMENDMENT NO. 144

TO FACILITY COMBINED LICENSE NO. NPF-92

DOCKET NO. 52-026

Replace the following pages of the Facility Combined License No. NPF-92 with the attached revised pages. The revised pages are identified by amendment number and contain marginal lines indicating the areas of change.

Facility Combined License No. NPF-92

REMOVE

7

INSERT

7

Appendix C to Facility Combined License No. NPF-92

REMOVE

C-209

C-209a

INSERT

C-209

C-209a

(7) Reporting Requirements

- (a) Within 30 days of a change to the initial test program described in UFSAR Section 14, Initial Test Program, made in accordance with 10 CFR 50.59 or in accordance with 10 CFR Part 52, Appendix D, Section VIII, "Processes for Changes and Departures," SNC shall report the change to the Director of NRO, or the Director's designee, in accordance with 10 CFR 50.59(d).
- (b) SNC shall report any violation of a requirement in Section 2.D.(3), Section 2.D.(4), Section 2.D.(5), and Section 2.D.(6) of this license within 24 hours. Initial notification shall be made to the NRC Operations Center in accordance with 10 CFR 50.72, with written follow up in accordance with 10 CFR 50.73.

(8) Incorporation

The Technical Specifications, Environmental Protection Plan, and ITAAC in Appendices A, B, and C, respectively of this license, as revised through Amendment No. 144, are hereby incorporated into this license. |

(9) Technical Specifications

The technical specifications in Appendix A to this license become effective upon a Commission finding that the acceptance criteria in this license (ITAAC) are met in accordance with 10 CFR 52.103(g).

(10) Operational Program Implementation

SNC shall implement the programs or portions of programs identified below, on or before the date SNC achieves the following milestones:

- (a) Environmental Qualification Program implemented before initial fuel load;
- (b) Reactor Vessel Material Surveillance Program implemented before initial criticality;
- (c) Preservice Testing Program implemented before initial fuel load;
- (d) Containment Leakage Rate Testing Program implemented before initial fuel load;
- (e) Fire Protection Program
 - 1. The fire protection measures in accordance with Regulatory Guide (RG) 1.189 for designated storage building areas (including adjacent fire areas that could affect the storage area) implemented before initial receipt

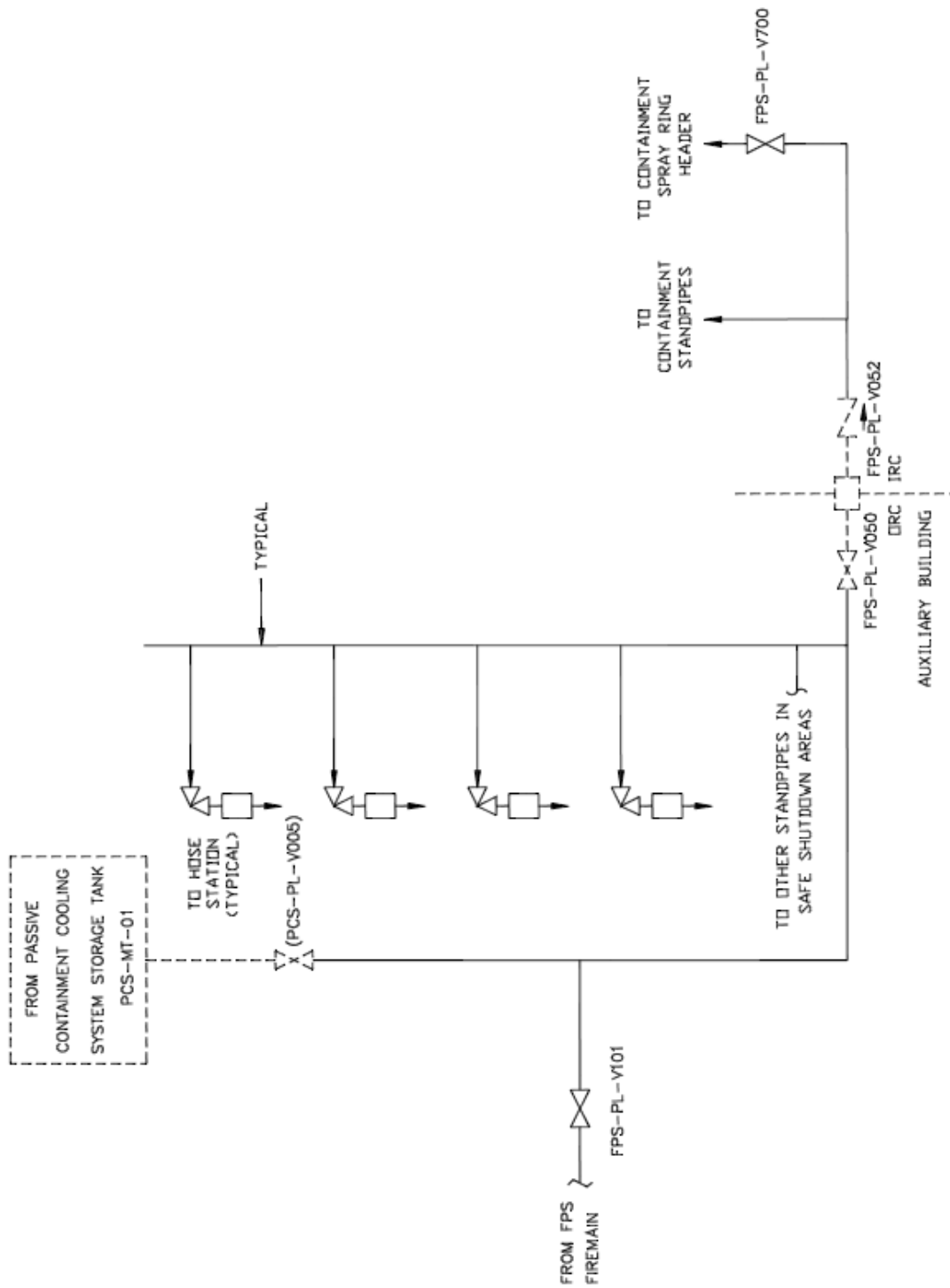
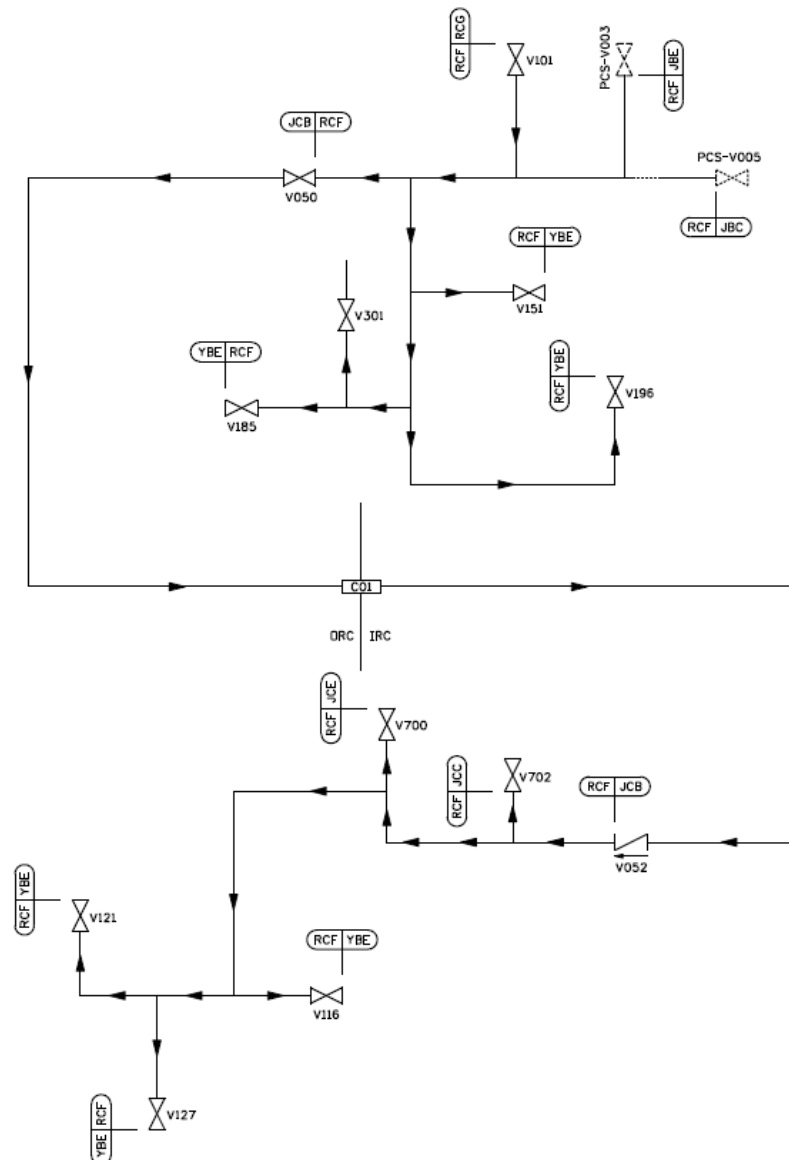


Figure 2.3.4-1 (Sheet 2 of 2)
Fire Protection System

ALL VALVES ARE FPS UNLESS OTHERWISE IDENTIFIED.

PIPING LOCATED WITHIN THE BOUNDARY VALVES OF THIS FIGURE, INCLUDING THE PIPING DOWNSTREAM OF VALVE V301, ARE DESIGNED TO REMAIN FUNCTIONAL FOLLOWING A SAFE SHUTDOWN EARTHQUAKE. THIS INCLUDES ALL RCF AND JCB CLASS FPS PIPING IN CONTAINMENT AND THE NON-RADIOLOGICAL AREA OF THE AUXILIARY BUILDING. DASHED LINES ARE RCF CLASS PCS PIPING.



Boundaries of Fire Protection System Piping That Must Remain Functional Following a Safe Shutdown Earthquake