

DOCKET NUMBER  
**50-250/251/33**

NRC DISTRIBUTION FOR PART 50 DOCKET MATERIAL

FILE NUMBER  
MONTHLY REPORT

TO:  
N. R. C.

FROM:  
Florida Power & Light Co.  
Miami, Florida  
A. D. Schmidt

DATE OF DOCUMENT  
10/5/77

DATE RECEIVED  
10/28/77

LETTER  
 ORIGINAL  
 COPY

NOTORIZED  
 UNCLASSIFIED

PROP

INPUT FORM

NUMBER OF COPIES RECEIVED

**1 CC**

DESCRIPTION

Letter trans the following:

ENCLOSURE

Monthly Report for September 1977  
Plant & Component Operability & Availability.  
This Report to be used in preparing Gray Book  
by Plans & Operations.

PLANT NAME: Turkey Point Units 3 & 4  
St. Lucie Unit No. 1  
RJL 10/28/77

(1-P)

(9-P)

**1 CY ENCL Rec'd \***

FOR ACTION/INFORMATION

MIPC W/2.CYS FOR ACTION

INTERNAL DISTRIBUTION

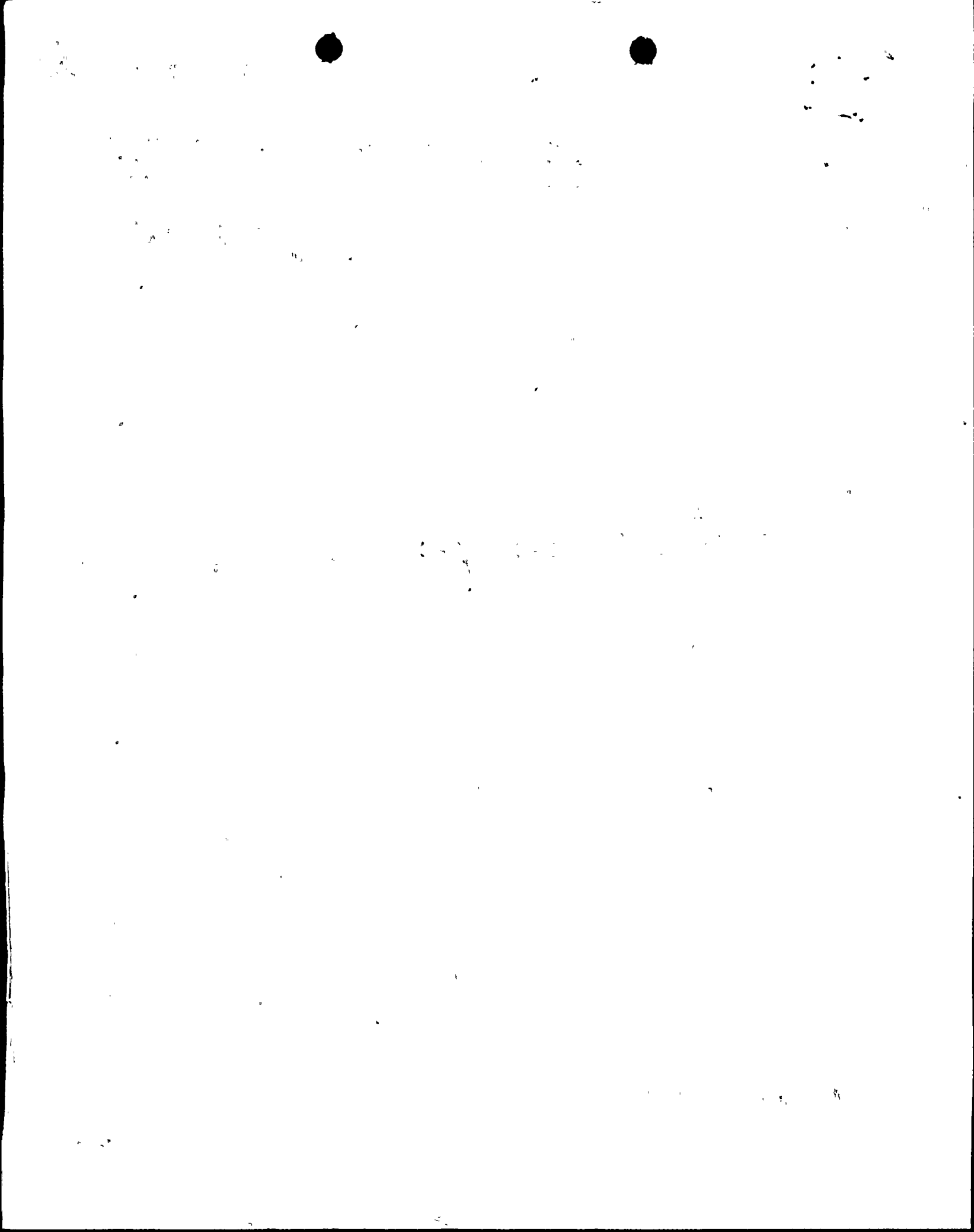
Reg Files (2)  
NRC PDR  
Branch Chief (L) **LEAR**  
Lic Asst **PARRISH**

EXTERNAL DISTRIBUTION

CONTROL NUMBER

LPDR: **Miami, FLA.**  
TIC  
NSIC

773000277



REGULATORY DOCKET FILE COPY

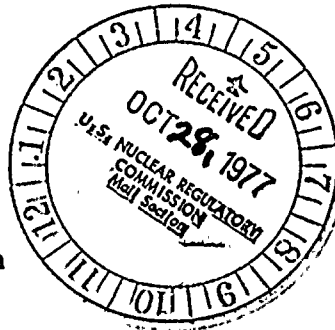
P. O. BOX 013100, MIAMI, FL 33101



FLORIDA POWER & LIGHT COMPANY

October 5, 1977

50-250  
251



Office of Management Information  
and Program Controls  
U. S. Nuclear Regulatory Commission  
Washington, D. C. 20555

Gentlemen:

Attached are the September, 1977, Operating Status Reports  
for Turkey Point Unit Nos. 3 and 4 and St. Lucie Unit  
No. 1.

Very truly yours,

A. D. Schmidt  
Vice President  
Power Resources

VTC/DDC

cc: Mr. James P. O'Reilly  
Robert Lowenstein, Esquire

1977 OCT 13 AM 7 17

RECEIVED MIPC

773000277

CONFIDENTIAL

SECRET

SECRET

SECRET

SECRET

SECRET

SECRET

SECRET

SECRET

SECRET

SECRET

SECRET

SECRET

SECRET

SECRET

SECRET

SECRET

SECRET

APPENDIX B  
AVERAGE DAILY UNIT POWER LEVEL .

DOCKET NO. 50 - 250  
Turkey Point  
UNIT Unit No. 3

DATE Oct. 5, 1977

COMPLETED BY V. T. Chilson

TELEPHONE (305) .552-3824

MONTH SEPTEMBER, 1977

DAY AVERAGE DAILY POWER LEVEL  
(MWe-Net)

1	<u>640</u>
2	<u>634</u>
3	<u>641</u>
4	<u>637</u>
5	<u>634</u>
6	<u>632</u>
7	<u>599</u>
8	<u>568</u>
9	<u>626</u>
10	<u>625</u>
11	<u>626</u>
12	<u>627</u>
13	<u>626</u>
14	<u>627</u>
15	<u>630</u>
16	<u>628</u>

DAY AVERAGE DAILY POWER LEVEL  
(MWe-Net)

17	<u>536</u>
18	<u>---</u>
19	<u>298</u>
20	<u>633</u>
21	<u>638</u>
22	<u>640</u>
23	<u>641</u>
24	<u>641</u>
25	<u>640</u>
26	<u>636</u>
27	<u>634</u>
28	<u>354</u>
29	<u>290</u>
30	<u>---</u>
<del>31</del>	<u>---</u>

APPENDIX C  
OPERATING DATA REPORT

DOCKET NO. 50 - 250  
Turkey Point  
UNIT Unit No. 3

REPORT MONTH SEPTEMBER, 1977

DATE Oct. 5, 1977

COMPLETED BY V. T. Chilson

TELEPHONE (305) 552-3824

OPERATING STATUS

1. REPORTING PERIOD: 0001,77,09,01 GROSS HOURS IN REPORTING PERIOD: 720.0  
THROUGH 2400,77,09,30
2. CURRENTLY AUTHORIZED POWER LEVEL (MWe): 2200  
MAX. DEPEND. CAPACITY (MWe-Net): 666  
DESIGN ELECTRICAL RATING (MWe-Net): 693
3. POWER LEVEL TO WHICH RESTRICTED (IF ANY) (MWe-Net): NONE
4. REASONS FOR RESTRICTION (IF ANY):

	THIS MONTH	YEAR TO DATE	CUMULATIVE
5. NUMBERS OF HOURS REACTOR WAS CRITICAL.....	<u>680.1</u>	<u>5 938.8</u>	<u>33 978.9</u>
6. REACTOR RESERVE SHUTDOWN HOURS.....	<u>38.9</u>	<u>43.7</u>	<u>111.1</u>
7. HOURS GENERATOR ON LINE.....	<u>662.2</u>	<u>5 751.2</u>	<u>32 790.3</u>
8. UNIT RESERVE SHUTDOWN HOURS.....	<u>-0-</u>	<u>-0-</u>	<u>85.0</u>
9. GROSS THERMAL ENERGY GENERATED (MWH).....	<u>1 391 626</u>	<u>12 331 641</u>	<u>64 061 229</u>
10. GROSS ELECTRICAL ENERGY GENERATED (MWH)...	<u>419 795</u>	<u>3 897 296</u>	<u>20 467 747</u>
11. NET ELECTRICAL ENERGY GENERATED (MWH).....	<u>397 417</u>	<u>3 699 575</u>	<u>19 375 510</u>
12. REACTOR SERVICE FACTOR.....	<u>94.5</u>	<u>90.7</u>	<u>80.4</u>
13. REACTOR AVAILABILITY FACTOR.....	<u>99.9</u>	<u>91.3</u>	<u>80.6</u>
14. UNIT SERVICE FACTOR.....	<u>92.0</u>	<u>87.8</u>	<u>79.9</u>
15. UNIT AVAILABILITY FACTOR.....	<u>92.0</u>	<u>87.8</u>	<u>80.1</u>
16. UNIT CAPACITY FACTOR (Using (MDC).....	<u>82.9</u>	<u>84.8</u>	<u>69.6</u>
17. UNIT CAPACITY FACTOR (Using Design MWe)...	<u>79.6</u>	<u>81.5</u>	<u>66.1</u>
18. UNIT FORCED OUTAGE RATE.....	<u>3.9</u>	<u>2.9</u>	<u>2.8</u>

19. SHUTDOWNS SCHEDULED OVER NEXT 6 MONTHS (TYPE, DATE, AND DURATION OF EACH):

Refueling, maintenance and inspections - Dec. 1, 1977 - Jan. 25, 1978

20. IF SHUTDOWN AT END OF REPORT PERIOD, ESTIMATED DATE OF STARTUP: \_\_\_\_\_

21. UNITS IN TEST STATUS (PRIOR TO COMMERCIAL OPERATION):	FORECAST	ACHIEVED
INITIAL CRITICALITY	_____	_____
INITIAL ELECTRICITY	_____	_____
COMMERCIAL OPERATION	_____	_____

## APPENDIX D

## UNIT SHUTDOWNS AND POWER REDUCTIONS

DOCKET NO. 50 - 250Turkey PointUNIT NAME Unit No. 3DATE Oct. 5, 1977COMPLETED BY V. T. ChilsonTELEPHONE (305) 552-3824REPORT MONTH SEPTEMBER, 1977

## REASON

- A: EQUIPMENT FAILURE (EXPLAIN)  
 B: MAINT. OR TEST  
 C: REFUELING  
 D: REGULATORY RESTRICTION  
 E: OPERATOR TRAINING AND  
 LICENSE EXAMINATION  
 F: ADMINISTRATIVE  
 G: OPERATIONAL ERROR (EXPLAIN)  
 H: OTHER (EXPLAIN)

## METHOD

- 1: MANUAL  
 2: MANUAL SCRAM  
 3: AUTOMATIC SCRAM  
 4: OTHER (EXPLAIN)

NO.	DATE	TYPE F: FORCED S: SCHEDULED	DURATION (HOURS)	REASON(1)	METHOD OF SHUTTING DOWN THE REACTOR OR REDUCING POWER(2)	CORRECTIVE ACTIONS/COMMENTS
22	77-09-17	S	31.1	B	1	Unit No. 3 was removed from service for maintenance. (Non-nuclear system)
23	77-09-28	F	2.4	A	3	Reactor trip caused by spurious operation of a relay in the reactor protection system. Corrective actions included replacement of the relay coil. (Nuclear system)
24	77-09-29	F	24.2	A	1	Unit was removed from service to repair a turbine stop valve. Corrective actions included replacing the failed disc assembly in the turbine stop valve. (Non-nuclear system)

SUMMARY: Unit No. 3 operated at approximately 100% R.P., except for outages of September 17-18, 28, and 29, 1977.

APPENDIX B  
AVERAGE DAILY UNIT POWER LEVEL

DOCKET NO. 50 - 251  
Turkey Point  
UNIT Unit No. 4

DATE Oct. 5, 1977

COMPLETED BY V. T. Chilson

TELEPHONE (305) 552-3824

MONTH SEPTEMBER, 1977  
DAY AVERAGE DAILY POWER LEVEL  
(MWe-Net)

1	---
2	586
3	678
4	670
5	660
6	656
7	658
8	656
9	553
10	656
11	653
12	651
13	651
14	657
15	658
16	659

DAY AVERAGE DAILY POWER LEVEL  
(MWe-Net)

17	659
18	661
19	660
20	661
21	662
22	553
23	662
24	667
25	663
26	655
27	656
28	657
29	659
30	657
31	

NOTE: Average daily power  
greater than 666 MWe  
due to cooler condenser  
cooling water.



APPENDIX C  
OPERATING DATA REPORT

DOCKET NO. 50 - 251  
Turkey Point  
UNIT Unit No. 4

REPORT MONTH SEPTEMBER, 1977

DATE Oct. 5, 1977

COMPLETED BY V. T. Chilson

TELEPHONE (305) 552-3824

OPERATING STATUS

1. REPORTING PERIOD: 0001,77,09,01 GROSS HOURS IN REPORTING PERIOD: 720.0  
THROUGH 2400,77,09,30
2. CURRENTLY AUTHORIZED POWER LEVEL (MWe): 2200  
MAX. DEPEND. CAPACITY (MWe-Net): 666  
DESIGN ELECTRICAL RATING (MWe-Net): 693
3. POWER LEVEL TO WHICH RESTRICTED (IF ANY) (MWe-Net): NONE
4. REASONS FOR RESTRICTION (IF ANY):

	THIS MONTH	YEAR TO DATE	CUMULATIVE
5. NUMBERS OF HOURS REACTOR WAS CRITICAL.....	<u>717.6</u>	<u>3 893.9</u>	<u>25 615.7</u>
6. REACTOR RESERVE SHUTDOWN HOURS.....	<u>-0-</u>	<u>-0-</u>	<u>138.8</u>
7. HOURS GENERATOR ON LINE.....	<u>690.7</u>	<u>3 746.2</u>	<u>24 288.2</u>
8. UNIT RESERVE SHUTDOWN HOURS.....	<u>-0-</u>	<u>-0-</u>	<u>-0-</u>
9. GROSS THERMAL ENERGY GENERATED (MWH).....	<u>1 477 538</u>	<u>8 029 380</u>	<u>51 088 750</u>
10. GROSS ELECTRICAL ENERGY GENERATED (MWH)...	<u>475 115</u>	<u>2 592 212</u>	<u>16 549 895</u>
11. NET ELECTRICAL ENERGY GENERATED (MWH).....	<u>451 567</u>	<u>2 455 238</u>	<u>15 685 704</u>
12. REACTOR SERVICE FACTOR.....	<u>99.7</u>	<u>59.4</u>	<u>71.2</u>
13. REACTOR AVAILABILITY FACTOR.....	<u>99.7</u>	<u>59.4</u>	<u>71.5</u>
14. UNIT SERVICE FACTOR.....	<u>95.9</u>	<u>57.2</u>	<u>67.5</u>
15. UNIT AVAILABILITY FACTOR.....	<u>95.9</u>	<u>57.2</u>	<u>67.5</u>
16. UNIT CAPACITY FACTOR (Using (MDC).....	<u>94.2</u>	<u>56.3</u>	<u>66.0</u>
17. UNIT CAPACITY FACTOR (Using Design MWe)...	<u>90.5</u>	<u>54.1</u>	<u>62.9</u>
18. UNIT FORCED OUTAGE RATE.....	<u>0.6</u>	<u>2.8</u>	<u>3.5</u>

19. SHUTDOWNS SCHEDULED OVER NEXT 6 MONTHS (TYPE, DATE, AND DURATION OF EACH):

20. IF SHUTDOWN AT END OF REPORT PERIOD, ESTIMATED DATE OF STARTUP: \_\_\_\_\_

21. UNITS IN TEST STATUS (PRIOR TO COMMERCIAL OPERATION):	FORECAST	ACHIEVED
◊ INITIAL CRITICALITY	_____	_____
• INITIAL ELECTRICITY	_____	_____
COMMERCIAL OPERATION	_____	_____

APPENDIX B  
AVERAGE DAILY UNIT POWER LEVEL

DOCKET NO. 50 - 335  
St. Lucie  
UNIT Unit No. 1

DATE Oct. 5, 1977

COMPLETED BY V. T. Chilson

TELEPHONE (305) 552-3824

MONTH SEPTEMBER, 1977

DAY AVERAGE DAILY POWER LEVEL  
(MWe-Net)

1	<u>748</u>
2	<u>779</u>
3	<u>784</u>
4	<u>777</u>
5	<u>775</u>
6	<u>784</u>
7	<u>784</u>
8	<u>774</u>
9	<u>745</u>
10	<u>783</u>
11	<u>780</u>
12	<u>781</u>
13	<u>778</u>
14	<u>780</u>
15	<u>781</u>
16	<u>775</u>

DAY AVERAGE DAILY POWER LEVEL  
(MWe-Net)

17	<u>757</u>
18	<u>778</u>
19	<u>777</u>
20	<u>744</u>
21	<u>741</u>
22	<u>732</u>
23	<u>770</u>
24	<u>635</u>
25	<u>---</u>
26	<u>---</u>
27	<u>---</u>
28	<u>---</u>
29	<u>---</u>
30	<u>---</u>
-31-	<u>---</u>

NOTE: Average daily power greater than 777 MWe due to cooler condenser cooling water.

ON  
 EQUIPMENT FAILURE (EXPLAIN)  
 MAINT. OR TEST  
 REFUELING  
 REGULATORY RESTRICTION  
 OPERATOR TRAINING AND  
 LICENSE EXAMINATION  
 ADMINISTRATIVE  
 OPERATIONAL ERROR (EXPLAIN)  
 OTHER (EXPLAIN)

APPENDIX D

UNIT SHUTDOWNS AND POWER REDUCTIONS

REPORT MONTH SEPTEMBER, 1977

DOCKET NO. 50 - 251  
 UNIT NAME Turkey Point  
           Unit No. 4  
 DATE Oct. 5, 1977  
 COMPLETED BY V. T. Chilson  
 TELEPHONE (305) 552-3824

MOD  
 MANUAL  
 MANUAL SCRAM  
 AUTOMATIC SCRAM  
 OTHER (EXPLAIN)

NO.	DATE	TYPE F: FORCED S: SCHEDULED	DURATION (HOURS)	REASON(1)	METHOD OF SHUTTING DOWN THE REACTOR OR REDUCING POWER(2)	CORRECTIVE ACTIONS/COMMENTS
13	77-09-01	S	25.0	A	4	Unit No. 4 was removed from service to repair moisture-separator-reheater tube leaks. Corrective actions included plugging leaking tubes. (Non-nuclear system)
14	77-09-09	F	1.6	A	3	Reactor trip caused by low voltage condition on the rod control system power supply. (Nuclear system)
15	77-09-22	F	2.6	A	3	Unit was tripped by the actuation of the loss of generator field relay. Corrective action included replacing failed components in the generator voltage regulator system. (Non-nuclear system)

SUMMARY: Unit No. 4 operated at approximately 100% R.P. except for outages on September 1-2, 9, and 22, 1977.

APPENDIX C  
OPERATING DATA REPORT

DOCKET NO. 50 - 335

St. Lucie  
UNIT Unit No. 1

REPORT MONTH SEPTEMBER, 1977

DATE Oct. 5, 1977

COMPLETED BY V. T. Chilson

TELEPHONE (305) 552-3824

OPERATING STATUS

1. REPORTING PERIOD: 0001,77,09,01 GROSS HOURS IN REPORTING PERIOD: 720.0  
THROUGH 2400,77,09,30
2. CURRENTLY AUTHORIZED POWER LEVEL (MWe): 2560  
MAX. DEPEND. CAPACITY (MWe-Net): 777  
DESIGN ELECTRICAL RATING (MWe-Net): 802
3. POWER LEVEL TO WHICH RESTRICTED (IF ANY) (MWe-Net): NONE
4. REASONS FOR RESTRICTION (IF ANY):

	THIS MONTH	YEAR TO DATE	CUMULATIVE
5. NUMBERS OF HOURS REACTOR WAS CRITICAL.....	<u>572.8</u>	<u>5 659.2</u>	<u>5 923.2</u>
6. REACTOR RESERVE SHUTDOWN HOURS.....	<u>-0-</u>	<u>101.5</u>	<u>101.5</u>
7. HOURS GENERATOR ON LINE.....	<u>572.8</u>	<u>5 451.1</u>	<u>5 715.1</u>
8. UNIT RESERVE SHUTDOWN HOURS.....	<u>-0-</u>	<u>-0-</u>	<u>-0-</u>
9. GROSS THERMAL ENERGY GENERATED (MWH).....	<u>1 450 241</u>	<u>12 655 049</u>	<u>13 002 752</u>
10. GROSS ELECTRICAL ENERGY GENERATED (MWH)...	<u>465 670</u>	<u>4 087 670</u>	<u>4 195 940</u>
11. NET ELECTRICAL ENERGY GENERATED (MWH).....	<u>439 618</u>	<u>3 833 361</u>	<u>3 932 536</u>
12. REACTOR SERVICE FACTOR.....	<u>79.6</u>	<u>86.4</u>	<u>86.9</u>
13. REACTOR AVAILABILITY FACTOR.....	<u>79.6</u>	<u>87.9</u>	<u>88.4</u>
14. UNIT SERVICE FACTOR.....	<u>79.6</u>	<u>83.2</u>	<u>83.9</u>
15. UNIT AVAILABILITY FACTOR.....	<u>79.6</u>	<u>83.2</u>	<u>83.9</u>
16. UNIT CAPACITY FACTOR (Using (MDC).....	<u>78.6</u>	<u>75.3</u>	<u>74.3</u>
17. UNIT CAPACITY FACTOR (Using Design MWe)...	<u>76.1</u>	<u>73.0</u>	<u>72.0</u>
18. UNIT FORCED OUTAGE RATE.....	<u>-0-</u>	<u>13.4</u>	<u>12.8</u>

19. SHUTDOWNS SCHEDULED OVER NEXT 6 MONTHS (TYPE, DATE, AND DURATION OF EACH):  
Refueling, maintenance, and inspections - March 15 - June 6, 1977
20. IF SHUTDOWN AT END OF REPORT PERIOD, ESTIMATED DATE OF STARTUP: Oct. 10, 1977

21. UNITS IN TEST STATUS (PRIOR TO COMMERCIAL OPERATION):	FORECAST	ACHIEVED
INITIAL CRITICALITY	_____	_____
INITIAL ELECTRICITY	_____	_____
COMMERCIAL OPERATION	_____	_____

SON  
 EQUIPMENT FAILURE (EXPLAIN)  
 MAINT. OR TEST  
 REFUELING  
 REGULATORY RESTRICTION  
 OPERATOR TRAINING AND  
 LICENSE EXAMINATION  
 ADMINISTRATIVE  
 OPERATIONAL ERROR (EXPLAIN)  
 OTHER (EXPLAIN)

APPENDIX D  
 UNIT SHUTDOWNS AND POWER REDUCTIONS

REPORT MONTH SEPTEMBER, 1977

DOCKET NO. 50 - 335  
St. Lucie  
 UNIT NAME Unit No. 1  
 DATE Oct. 5, 1977  
 COMPLETED BY V. T. Chilson  
 TELEPHONE (305) 552-3824

METHOD  
 : MANUAL  
 : MANUAL SCRAM  
 : AUTOMATIC SCRAM  
 : OTHER (EXPLAIN)

NO.	DATE	TYPE F: FORCED S: SCHEDULED	DURATION (HOURS)	REASON(1)	METHOD OF SHUTTING DOWN THE REACTOR OR REDUCING POWER(2)	CORRECTIVE ACTIONS/COMMENTS
33	77-09-24	S	125.2	B	1	Unit was removed from service to perform preliminary warranty inspection. (Nuclear and Non-nuclear systems)

SUMMARY: Unit No. 1 operated at approximately 100% R.P. until September 24, 1977, when the unit was removed from service for preliminary warranty inspection.

RECEIVED DOCUMENT  
PROCESSING UNIT

1977 OCT 26 AM 9 38