

NRC DISTRIBUTION FOR PART 50 DOCKET MATERIAL
(TEMPORARY FORM)

CONTROL NO: 11985

FILE: MONTHLY REPORT FILE

FROM: Florida Power & Light Co. Miami, Florida A.D. Schmidt		DATE OF DOC 10-9-75	DATE REC'D 10-15-75	LTR XXX	TWX	RPT	OTHER
TO: NRC		ORIG 1 Signed	CC 0	OTHER	SENT AEC PDR SENT LOCAL PDR		XXX XXX
CLASS	UNCLASS XXX	PROP INFO	INPUT	NO CYS REC'D 1	DOCKET NO: 50-250(251)		

DESCRIPTION:
Ltr trans the following:

PLANT NAME: Turkey Point 3 & 4

ENCLOSURES:
Monthly Report for September 1975
Plant & Component Operability & Availability
This Report to be used in preparing Gray Book
by Plans & Operations.

NUMBER OF COPIES REC'D: 1

FOR ACTION/INFORMATION

SAB 10-15-75

BUTLER (L) W/ Copies	SCHWENCER (L) W/ Copies	ZIEMANN (L) W/ Copies	REGAN (E) W/ Copies
CLARK (L) W/ Copies	STOLZ (L) W/ Copies	DICKER (E) W/ Copies	LEAR (L) W/ Copies
PARR (L) W/ Copies	VASSALLO (L) W/ Copies	KNIGHTON (E) W/ Copies	SPELS W/ Copies
KNIEL (L) W/ Copies	PURPLE (L) W/ Copies	YOUNGBLOOD (E) W/ Copies	MIPC/PE W/4 Copies

DO NOT REMOVE

ACKNOWLEDGED

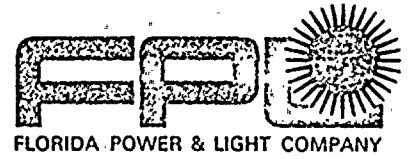
INTERNAL DISTRIBUTION

REG FILE NRC PDR OGC, ROOM P-506A. GOSSICK/STAFF CASE GIAMBUSSO BOYD MOORE (L) DEYOUNG (L) SKOVHOLT (L) GOLLER (L) (Ltr) P. COLLINS DENISE REG OPR FILE & REGION (2) STEELE	TECH REVIEW SCHROEDER MACCARY KNIGHT PAWLICKI SHAO STELLO HOUSTON NOVAK ROSS IPPOLITO TEDESCO J. COLLINS LAINAS BENAROYA VOLLMER	DENTON GRIMES GAMMILL KASTNER BALLARD SPANGLER ENVIRO MULLER DICKER KNIGHTON YOUNGBLOOD REGAN PROJECT LDR HARLESS	LIC ASST R. DIGGS (L) H. GEARIN (L) E. GOULBOURNE (L) P. KREUTZER (E) J. LEE (L) M. RUSHEROCK (L) S. REED (E) M. SERVICE (L) S. SHEPPARD (L) M. SLATER (E) H. SMITH (L) S. TEETS (L) G. WILLIAMS (E) V. WILSON (L) R. INGRAM (L) M. DUNCAN (E)	A/T IND. BRAITMAN SALTZMAN MELTZ PLANS MCDONALD CHAPMAN DUBE (Ltr) E. COUPE PETERSON HARTFIELD (2) KLECKER EISENHUT WIGGINTON
---	---	--	--	--

EXTERNAL DISTRIBUTION

1 - LOCAL PDR <u>Miami, Florida</u>	1 - NATIONAL LABS	1 - PDR-SAN/LA/NY
1 - TIC (ABERNATHY) (1)(2)(10)	1 - W. PENNINGTON, Rm E-201 GT	1 - BROOKHAVEN NAT LAB
1 - NSIC (BUCHANAN)	1 - CONSULTANTS	1 - G. ULRIKSON, ORNL
1 - ASLB	NEWMARK/BLUME/AGBABIAN	1 - AGMED (RUTH GUSSMAN) Rm B-127 GT
1 - Newton Anderson		1 - J. D. RUNKLES, Rm E-201 GT
- ACRS HOLDING/SENT		

MRC



October 9, 1975

Office of Management Information
and Program Controls
U. S. Nuclear Regulatory Commission
Washington, D. C. 20555

Regulatory

File-CY

Gentlemen:

Attached are the September, 1975 Operating Status Reports for
Turkey Point Unit Nos. 3 and 4.

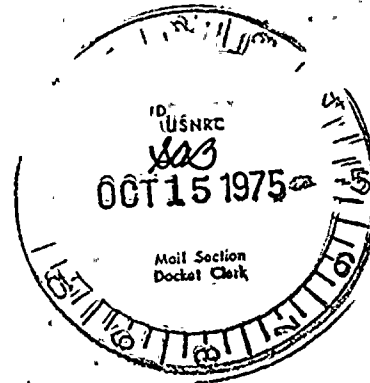
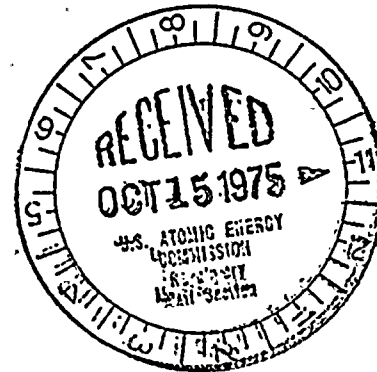
Very truly yours,

J.R. Beusen
for A. D. Schmidt
Vice President
Power Resources

VTC/cpc

Attachments

cc: Mr. Norman C. Moseley
Jack R. Newman, Esquire



11985

APPENDIX B
AVERAGE DAILY UNIT POWER LEVEL

DOCKET NO. 50-250

UNIT Turkey Point Unit No. 3

DATE October 6, 1975

COMPLETED BY Marylee Montgomery

TELEPHONE (305) 245-2910 Ext. 228

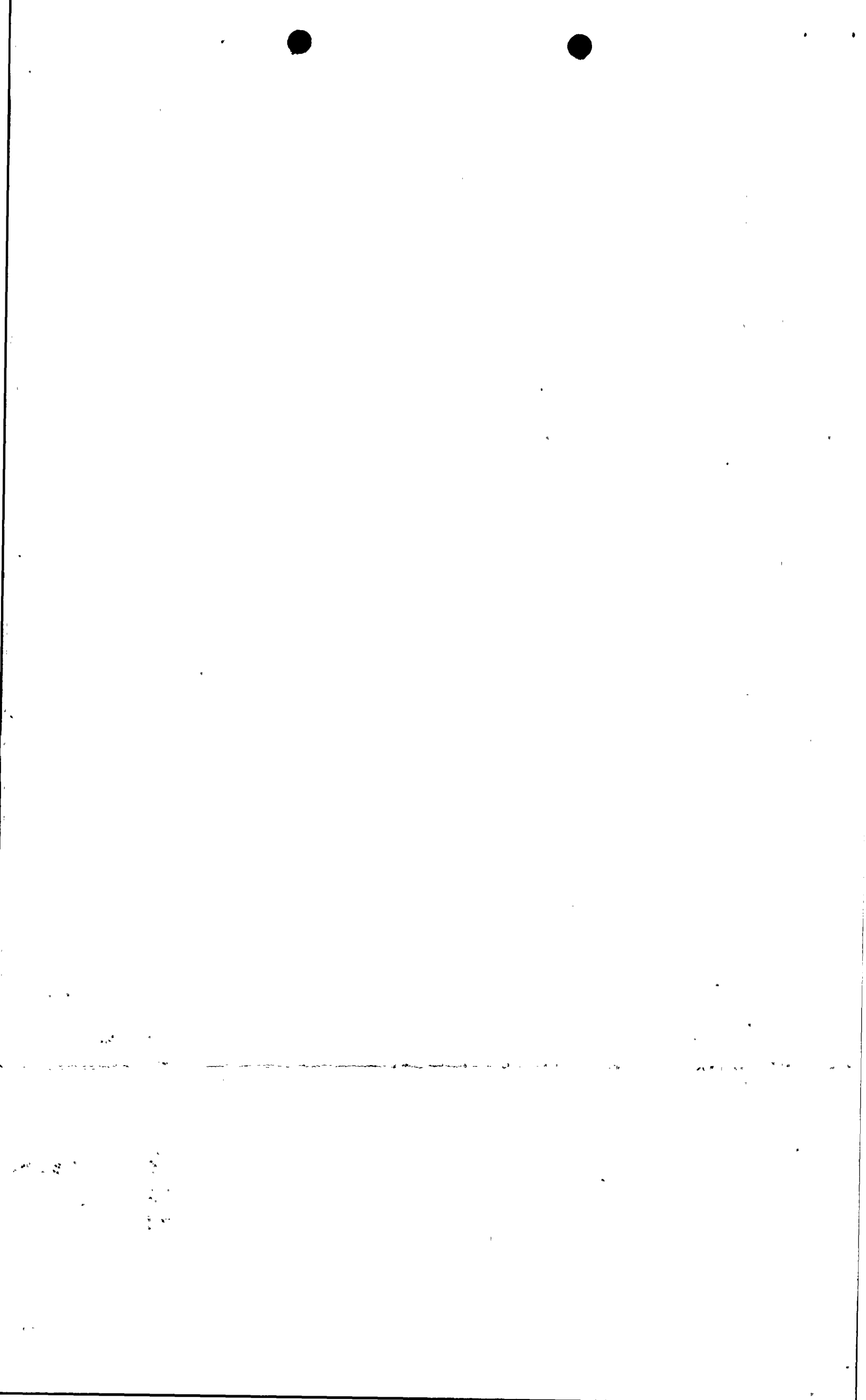
MONTH September, 1975

DAY AVERAGE DAILY POWER LEVEL
(MWe-Net)

1	<u>647</u>
2	<u>648</u>
3	<u>649</u>
4	<u>611</u>
5	<u>697</u>
6	<u>650</u>
7	<u>643</u>
8	<u>640</u>
9	<u>642</u>
10	<u>645</u>
11	<u>647</u>
12	<u>647</u>
13	<u>643</u>
14	<u>641</u>
15	<u>643</u>
16	<u>642</u>

DAY AVERAGE DAILY POWER LEVEL
(MWe-Net)

17	<u>638</u>
18	<u>641</u>
19	<u>610</u>
20	<u>203</u>
21	<u>512</u>
22	<u>628</u>
23	<u>633</u>
24	<u>635</u>
25	<u>626</u>
26	<u>600</u>
27	<u>636</u>
28	<u>639</u>
29	<u>636</u>
30	<u>373</u>
31	<u>---</u>



APPENDIX C
OPERATING DATA REPORT

DOCKET NO. 50-250
 UNIT Turkey Point Unit No. 3
 DATE October 6, 1975
 COMPLETED BY Marylee Montgomery
 TELEPHONE (305) 245-2910 Ext. 228

OPERATING STATUS

thru 2400,75,09,30

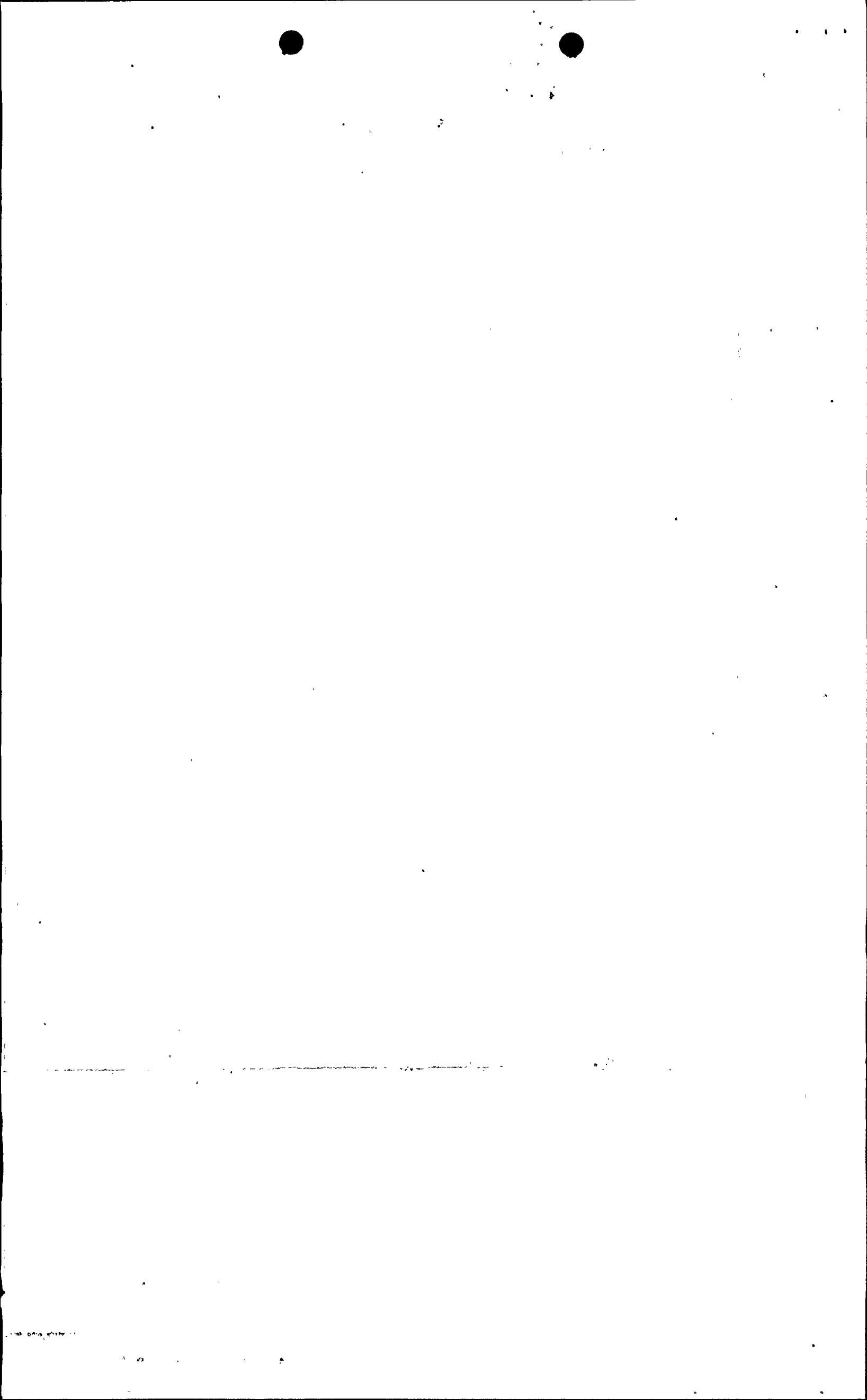
1. REPORTING PERIOD: 0001,75,09,01 / GROSS HOURS IN REPORTING PERIOD: 720:00
2. CURRENTLY AUTHORIZED POWER LEVEL (Mwt): 2200
 MAX. DEPEND. CAPACITY (MWe-Net): 666
 DESIGN ELECTRICAL RATING (MWe-Net): 693
3. POWER LEVEL TO WHICH RESTRICTED (IF ANY) (MWe-Net): None
4. REASONS FOR RESTRICTION (IF ANY):

	THIS MONTH	YEAR TO DATE	CUMULATIVE
5. NUMBER OF HOURS REACTOR WAS CRITICAL.....	<u>718.9</u>	<u>6296.2</u>	<u>20324.9</u>
6. REACTOR RESERVE SHUTDOWN HOURS.....	<u>-0-</u>	<u>-0-</u>	<u>-0-</u>
7. HOURS GENERATOR ON LINE.....	<u>717.2</u>	<u>6194.0</u>	<u>19612.3</u>
8. UNIT RESERVE SHUTDOWN HOURS.....	<u>-0-</u>	<u>-0-</u>	<u>85.0</u>
9. GROSS THERMAL ENERGY GENERATED (MWH).....	<u>1,506,518</u>	<u>13,129,263</u>	<u>35,809,287</u>
10. GROSS ELECTRICAL ENERGY GENERATED (MWH) ..	<u>463,928</u>	<u>4,128,994</u>	<u>11,556,799</u>
11. NET ELECTRICAL ENERGY GENERATED (MWH)....	<u>440,276</u>	<u>3,949,751</u>	<u>10,930,916</u>
12. REACTOR SERVICE FACTOR.....	<u>99.8</u>	<u>96.1</u>	<u>82.1</u>
13. REACTOR AVAILABILITY FACTOR.....	<u>99.8</u>	<u>96.1</u>	<u>82.1</u>
14. UNIT SERVICE FACTOR.....	<u>99.6</u>	<u>94.6</u>	<u>79.3</u>
15. UNIT AVAILABILITY FACTOR.....	<u>99.6</u>	<u>94.6</u>	<u>79.6</u>
16. UNIT CAPACITY FACTOR (Using MDC).....	<u>91.8</u>	<u>90.5</u>	<u>67.7</u>
17. UNIT CAPACITY FACTOR (Using Design MWe)..	<u>88.2</u>	<u>87.0</u>	<u>64.9</u>
18. UNIT FORCED OUTAGE RATE.....	<u>0.4</u>	<u>3.4</u>	<u>4.0</u>

19. SHUTDOWNS SCHEDULED OVER NEXT 6 MONTHS (TYPE, DATE, AND DURATION OF EACH):
October 27 - December 7, 1975 - Refueling, Maintenance, and Inspection

20. IF SHUTDOWN AT END OF REPORT PERIOD, ESTIMATED DATE OF STARTUP: _____

21. UNITS IN TEST STATUS (PRIOR TO COMMERCIAL OPERATION):	FORECAST	ACHIEVED
INITIAL CRITICALITY	_____	_____
INITIAL ELECTRICITY	_____	_____
COMMERCIAL OPERATION	_____	_____



- 1) REASON
 A: EQUIPMENT FAILURE (EXPLAIN)
 B: MAINT. OR TEST
 C: REFUELING
 D: REGULATORY RESTRICTION
 E: OPERATOR TRAINING AND
 LICENSE EXAMINATION
 F: ADMINISTRATIVE
 G: OPERATIONAL ERROR (EXPLAIN)
 H: OTHER (EXPLAIN)

UNIT SHUTDOWNS AND POWER REDUCTIONS

UNIT NAME Turkey Point Unit No. 3

DATE October 6, 1975

COMPLETED BY Marylee Montgomery

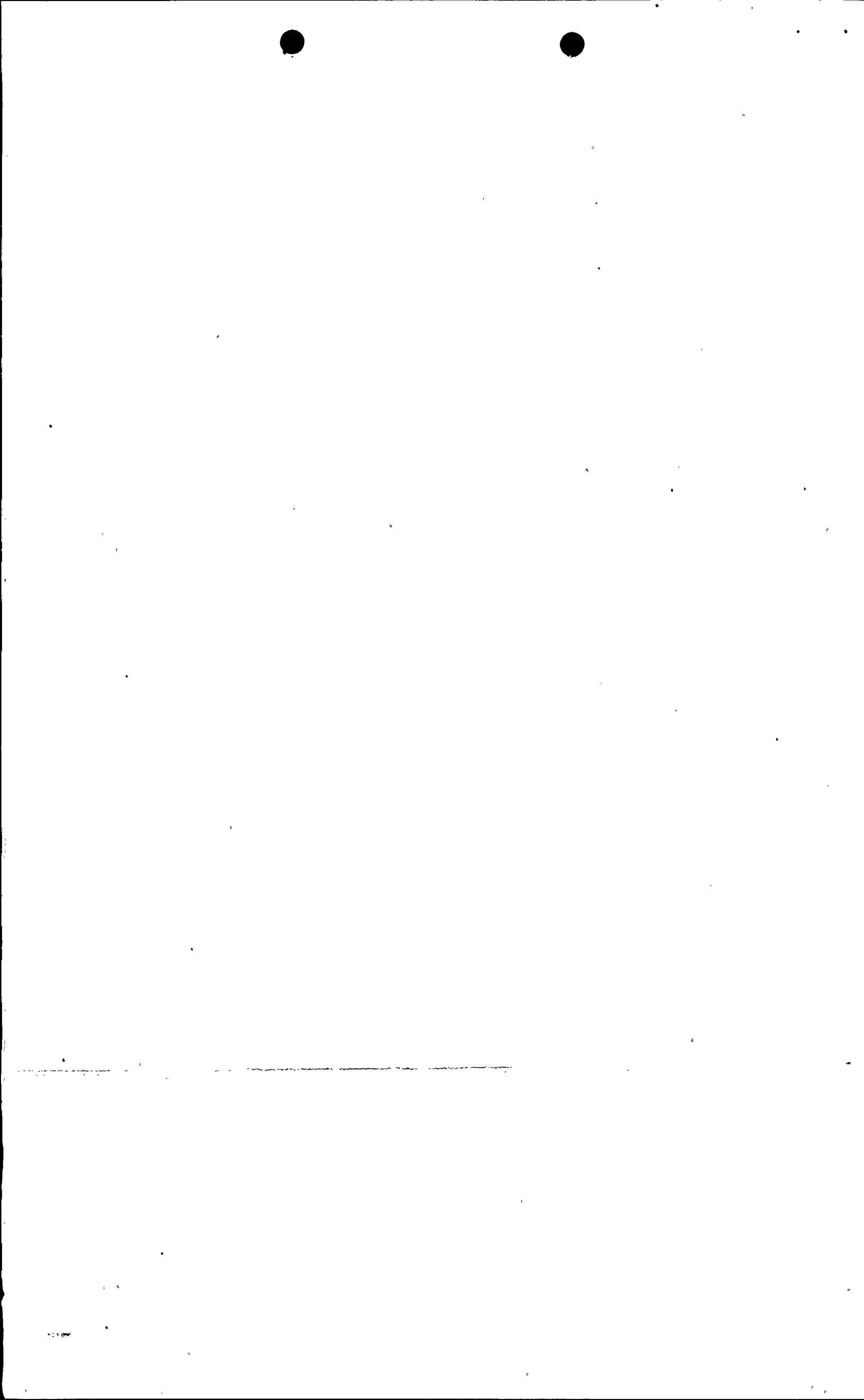
TELEPHONE (305) 245-2910 Ext. 228

REPORT MONTH September, 1975

- 2) METHOD
 1: MANUAL
 2: MANUAL SCRAM
 3: AUTOMATIC SCRAM
 4: OTHER (EXPLAIN)

NO.	DATE	TYPE F: FORCED S: SCHEDULED	DURATION (HOURS)	REASON (1)	METHOD OF SHUTTING DOWN THE REACTOR OR REDUCING POWER (2)	CORRECTIVE ACTIONS/COMMENTS
28	75-09-19	F	2.8	A	3	Turbine was tripped on steam generator No. 3B high-high level caused by the failure of steam generator No. 3B feedwater control valve actuator linkage. Turbine trip caused reactor trip. Corrective action was to repair the failed linkage. (NON-NUCLEAR SYSTEM)
29	75-09-20	F	-0-	H	4	Load on Unit No. 3 was maintained below 50% R.P. because the indicated axial flux difference was outside the target band for more than sixty effective minutes (cumulative) out of the preceding 24 hour period. (NUCLEAR SYSTEM)
30	75-09-26	F	-0-	A	4	Load on Unit No. 3 was manually reduced to approximately 50% R.P. to investigate and correct condenser tube leak. Corrective action was to locate and plug the leaking condenser tube. (NON-NUCLEAR SYSTEM)
31	75-09-30	F	-0-	A	4	Load on Unit No. 3 was manually reduced to approximately 50% R.P. to investigate and correct condenser tube leak. Corrective action was to locate and plug the leaking condenser tube. (NON-NUCLEAR SYSTEM)

SUMMARY: Unit No. 3 operated at 100% R.P. for entire month except for turbine-reactor trip on September 19, 1975, 50% R.P. load restriction on September 20, 1975, and load reductions to repair condenser tube leaks on September 26, and 30, 1975.



APPENDIX B
AVERAGE DAILY UNIT POWER LEVEL

DOCKET NO. 50-251

UNIT Turkey Point Unit No. 4

DATE October 6, 1975

COMPLETED BY Marylee Montgomery

TELEPHONE (305) 245-2910 Ext. 228

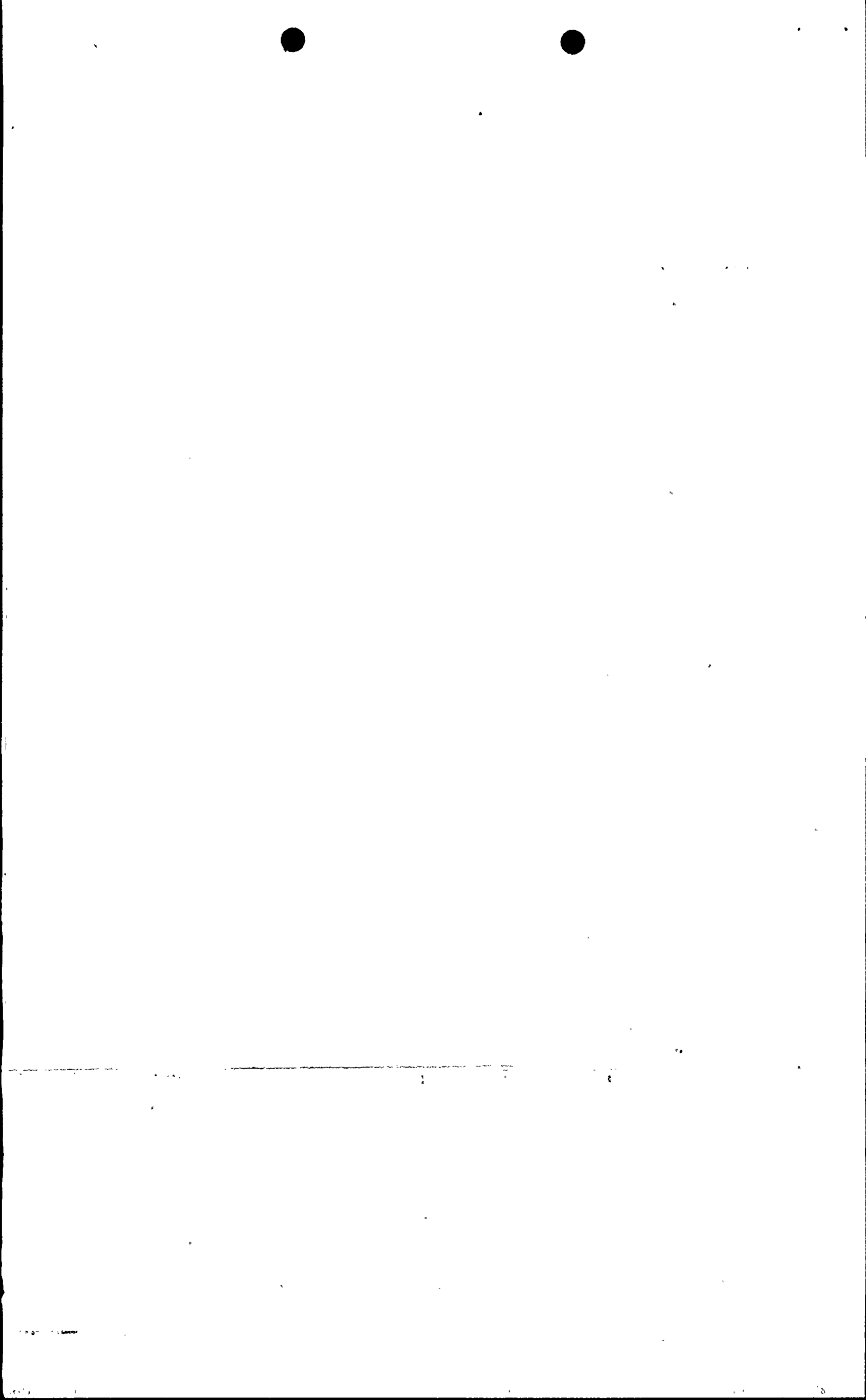
MONTH September, 1975

DAY AVERAGE DAILY POWER LEVEL
(MWe-Net)

1	<u>638</u>
2	<u>638</u>
3	<u>348</u>
4	<u>496</u>
5	<u>599</u>
6	<u>606</u>
7	<u>606</u>
8	<u>613</u>
9	<u>608</u>
10	<u>604</u>
11	<u>615</u>
12	<u>613</u>
13	<u>610</u>
14	<u>602</u>
15	<u>599</u>
16	<u>601</u>

DAY AVERAGE DAILY POWER LEVEL
(MWe-Net)

17	<u>597</u>
18	<u>603</u>
19	<u>595</u>
20	<u>596</u>
21	<u>5</u>
22	<u>-</u>
23	<u>-</u>
24	<u>-</u>
25	<u>-</u>
26	<u>-</u>
27	<u>-</u>
28	<u>-</u>
29	<u>-</u>
30	<u>-</u>
31	<u>---</u>



APPENDIX C
OPERATING DATA REPORT

DOCKET NO. 50-251

UNIT Turkey Point Unit No. 4

DATE October 6, 1975

COMPLETED BY Marylee Montgomery

TELEPHONE (305) 245-2910 Ext. 228

OPERATING STATUS

thru 2400,75,09,30

1. REPORTING PERIOD: 0001,75,09,01 / GROSS HOURS IN REPORTING PERIOD: 720.0

2. CURRENTLY AUTHORIZED POWER LEVEL (Mwt): 2200
MAX. DEPEND. CAPACITY (MWe-Net): 666
DESIGN ELECTRICAL RATING (MWe-Net): 693

3. POWER LEVEL TO WHICH RESTRICTED (IF ANY) (MWe-Net): None

4. REASONS FOR RESTRICTION (IF ANY):

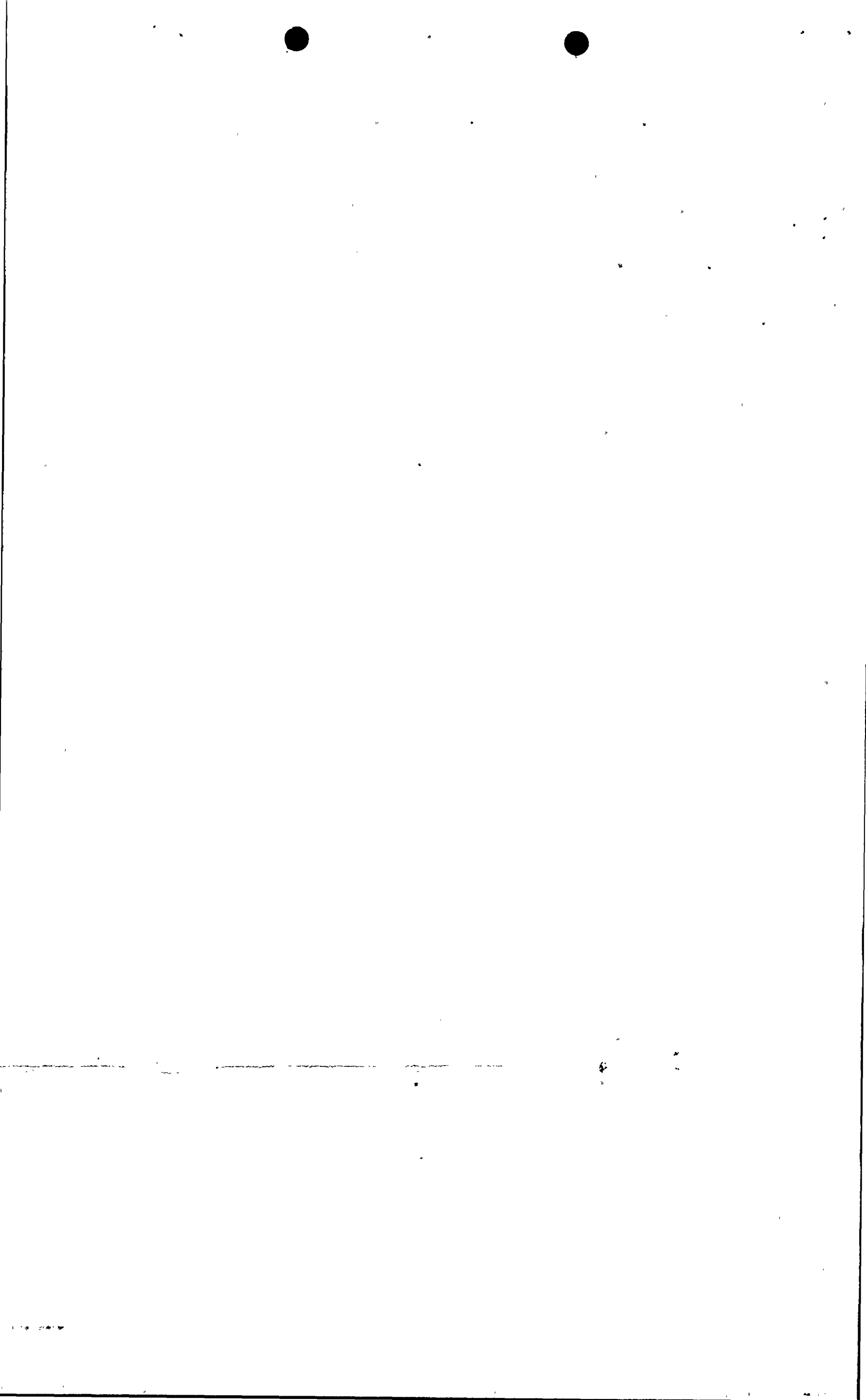
	THIS MONTH	YEAR TO DATE	CUMULATIVE
5. NUMBER OF HOURS REACTOR WAS CRITICAL.....	<u>480.6</u>	<u>4143.9</u>	<u>13477.7</u>
6. REACTOR RESERVE SHUTDOWN HOURS.....	<u>-0-</u>	<u>97.3</u>	<u>97.3</u>
7. HOURS GENERATOR ON LINE.....	<u>473.7</u>	<u>4035.4</u>	<u>13093.2</u>
8. UNIT RESERVE SHUTDOWN HOURS.....	<u>-0-</u>	<u>-0-</u>	<u>-0-</u>
9. GROSS THERMAL ENERGY GENERATED (MWH).....	<u>990883</u>	<u>8541709</u>	<u>26893919</u>
10. GROSS ELECTRICAL ENERGY GENERATED (MWH)..	<u>299140</u>	<u>2702476</u>	<u>8476737</u>
11. NET ELECTRICAL ENERGY GENERATED (MWH)....	<u>282212</u>	<u>2559218</u>	<u>8028274</u>
12. REACTOR SERVICE FACTOR.....	<u>66.8</u>	<u>63.3</u>	<u>74.5</u>
13. REACTOR AVAILABILITY FACTOR.....	<u>66.8</u>	<u>64.7</u>	<u>75.0</u>
14. UNIT SERVICE FACTOR.....	<u>65.8</u>	<u>61.6</u>	<u>72.4</u>
15. UNIT AVAILABILITY FACTOR.....	<u>65.8</u>	<u>61.6</u>	<u>72.4</u>
16. UNIT CAPACITY FACTOR (Using MDC).....	<u>58.9</u>	<u>58.7</u>	<u>67.7</u>
17. UNIT CAPACITY FACTOR (Using Design MWe)..	<u>56.6</u>	<u>56.4</u>	<u>65.1</u>
18. UNIT FORCED OUTAGE RATE.....	<u>1.8</u>	<u>0.4</u>	<u>3.9</u>

19. SHUTDOWNS SCHEDULED OVER NEXT 6 MONTHS (TYPE, DATE, AND DURATION OF EACH):

None

20. IF SHUTDOWN AT END OF REPORT PERIOD, ESTIMATED DATE OF STARTUP: October 1, 1975

21. UNITS IN TEST STATUS (PRIOR TO COMMERCIAL OPERATION):	FORECAST	ACHIEVED
INITIAL CRITICALITY	_____	_____
INITIAL ELECTRICITY	_____	_____
COMMERCIAL OPERATION:	_____	_____



UNIT SHUTDOWNS AND POWER REDUCTIONS

UNIT NAME Turkey Point Unit No. 4

DATE October 6, 1975

COMPLETED BY Marylee Montgomery

TELEPHONE (305) 245-2910 Ext. 228

REPORT MONTH September, 1975

PAGE ONE OF TWO

REASON

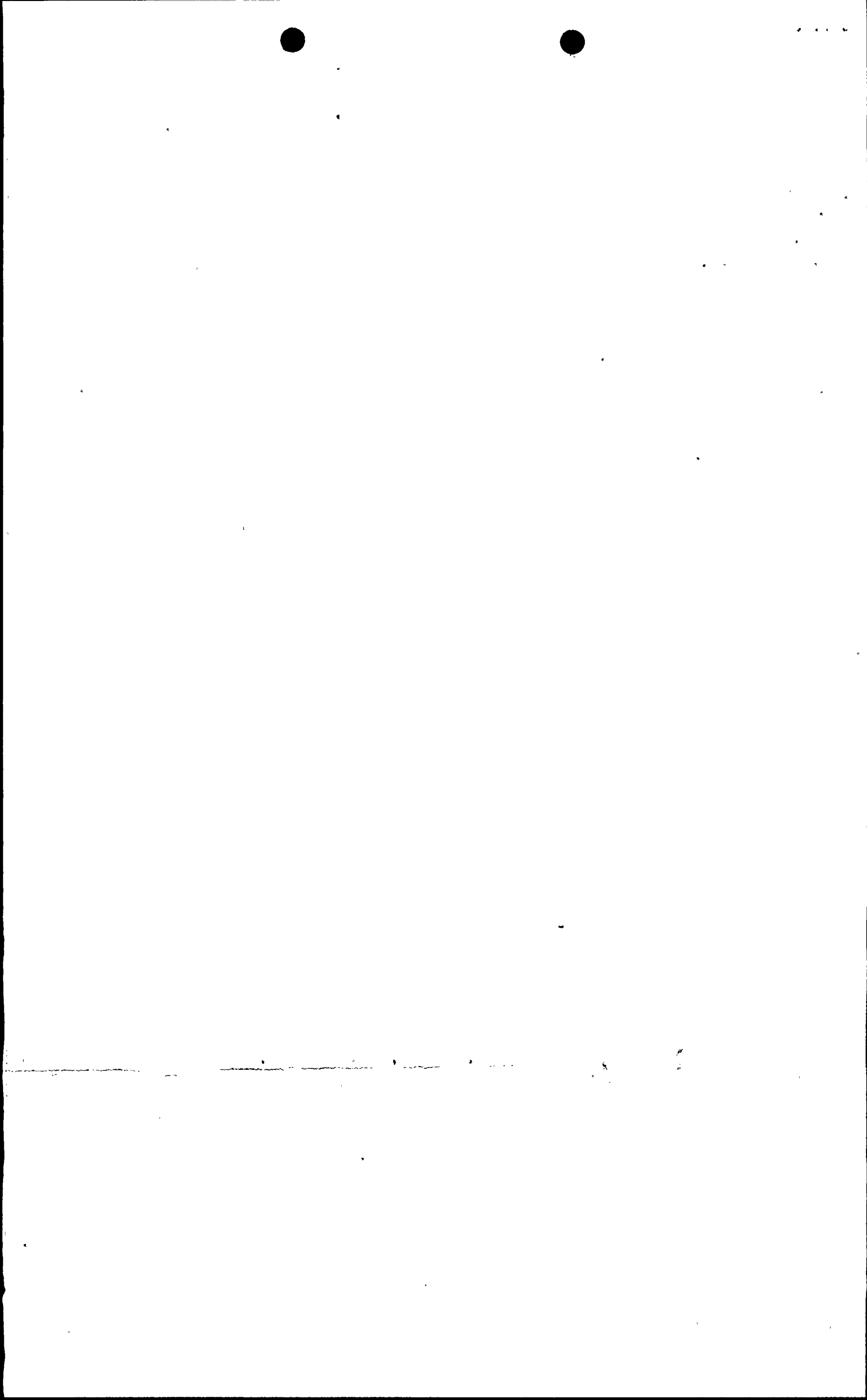
- A: EQUIPMENT FAILURE (EXPLAIN)
 B: MAINT. OR TEST
 C: REFUELING
 D: REGULATORY RESTRICTION
 E: OPERATOR TRAINING AND
 LICENSE EXAMINATION
 F: ADMINISTRATIVE
 G: OPERATIONAL ERROR (EXPLAIN)
 H: OTHER (EXPLAIN)

METHOD

- 1: MANUAL
 2: MANUAL SCRAM
 3: AUTOMATIC SCRAM
 4: OTHER (EXPLAIN)

NO.	DATE	TYPE F: FORCED S: SCHEDULED	DURATION (HOURS)	REASON(1)	METHOD OF SHUTTING DOWN THE REACTOR OR REDUCING POWER(2)	CORRECTIVE ACTIONS/COMMENTS
13	75/09/03	F	2.3	A	3	Reactor was tripped on steam generator No. 4A low level, coincident with steam flow greater than feedwater flow caused by a transient condition on steam generator feedwater pump suction header associated with the failure of the mechanical fasteners on steam generator No. 4A feedwater control valve actuator connection to valve body. Corrective action was to install new mechanical fasteners, align the actuator with the valve body, and torque the mechanical fasteners to the proper valves. (NON-NUCLEAR SYSTEM)
14	75/09/03	F	4.7	A	3	Turbine was tripped on steam generator No. 4A high-high level caused by the failure of steam generator No. 4A bypass feedwater system control valve positioner drive arm. Turbine trip caused reactor trip. Corrective action was to install new positioner drive arm. (NON-NUCLEAR SYSTEM)
15	75/09/03	F	1.6	A	3	Turbine was tripped on steam generator No. 4A high-high level caused by the failure of steam generator No. 4A bypass feedwater system control valve positioner drive arm. Turbine trip caused reactor trip. Corrective action was to install a new (CONTINUED ON PAGE TWO)

SUMMARY: Unit No. 4 operated at an average reactor power level of 97% R.P. except for unit shutdowns on September 4, 1975, load reduction on September 5, 1975, and scheduled maintenance outage beginning September 21, 1975.



UNIT SHUTDOWNS AND POWER REDUCTIONS

UNIT NAME Turkey Point Unit No. 4

DATE October 6, 1975

COMPLETED BY Marylee Montgomery

TELEPHONE (305) 245-2910 Ext. 228

REPORT MONTH September, 1975

PAGE TWO OF TWO

REASON

- A: EQUIPMENT FAILURE (EXPLAIN)
 B: MAINT. OR TEST
 C: REFUELING
 D: REGULATORY RESTRICTION
 E: OPERATOR TRAINING AND
 LICENSE EXAMINATION
 F: ADMINISTRATIVE
 G: OPERATIONAL ERROR (EXPLAIN)
 H: OTHER (EXPLAIN)

METHOD

- 1: MANUAL
 2: MANUAL SCRAM
 3: AUTOMATIC SCRAM
 4: OTHER (EXPLAIN)

NO.	DATE	TYPE F: FORCED S: SCHEDULED	DURATION (HOURS)	REASON(1)	METHOD OF SHUTTING DOWN THE REACTOR OR REDUCING POWER(2)	CORRECTIVE ACTIONS/COMMENTS
15			ONE:.....			positioner drive arm and properly align the control valve positioner with the valve body. (NON-NUCLEAR SYSTEM)
16	75/09/04	F	-0-	A	4	Load on Unit No. 4 was manually reduced to approximately 25% to investigate and correct problem with the control signal to No. 4C feedwater control valve positioner. Corrective action was to install a new pressure gauge because the bourdon-tube element on the existing pressure gauge was leaking. (NON-NUCLEAR SYSTEM)
17	75/09/21	S	237.5	A	1	Unit No. 4 was removed from service (controlled manual shutdown) to repair steam generator No. 4B tube leak (small leak in one of 3,260 tubes). There were no significant quantities of radioactive material released as a result of this small leak. (NUCLEAR SYSTEM)

SUMMARY:

