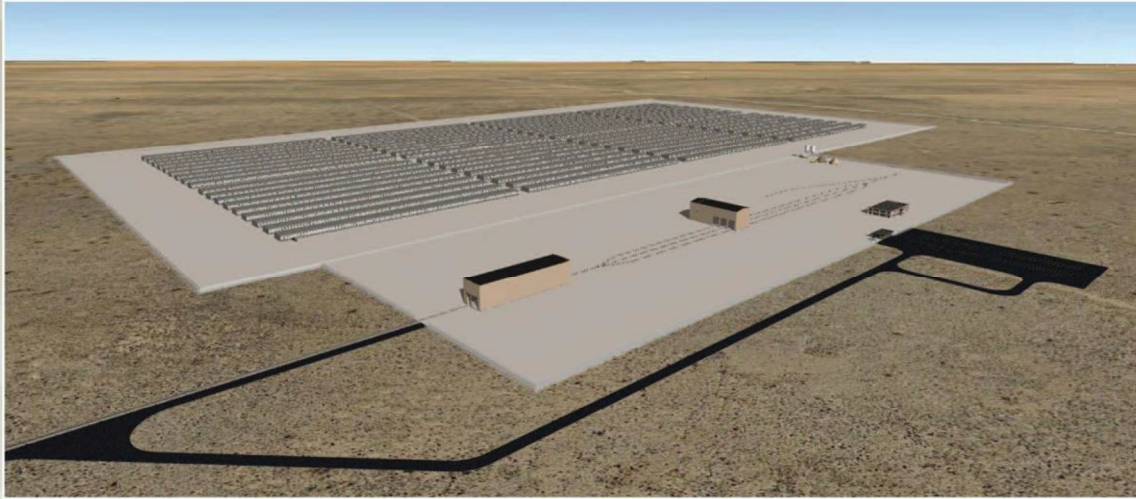




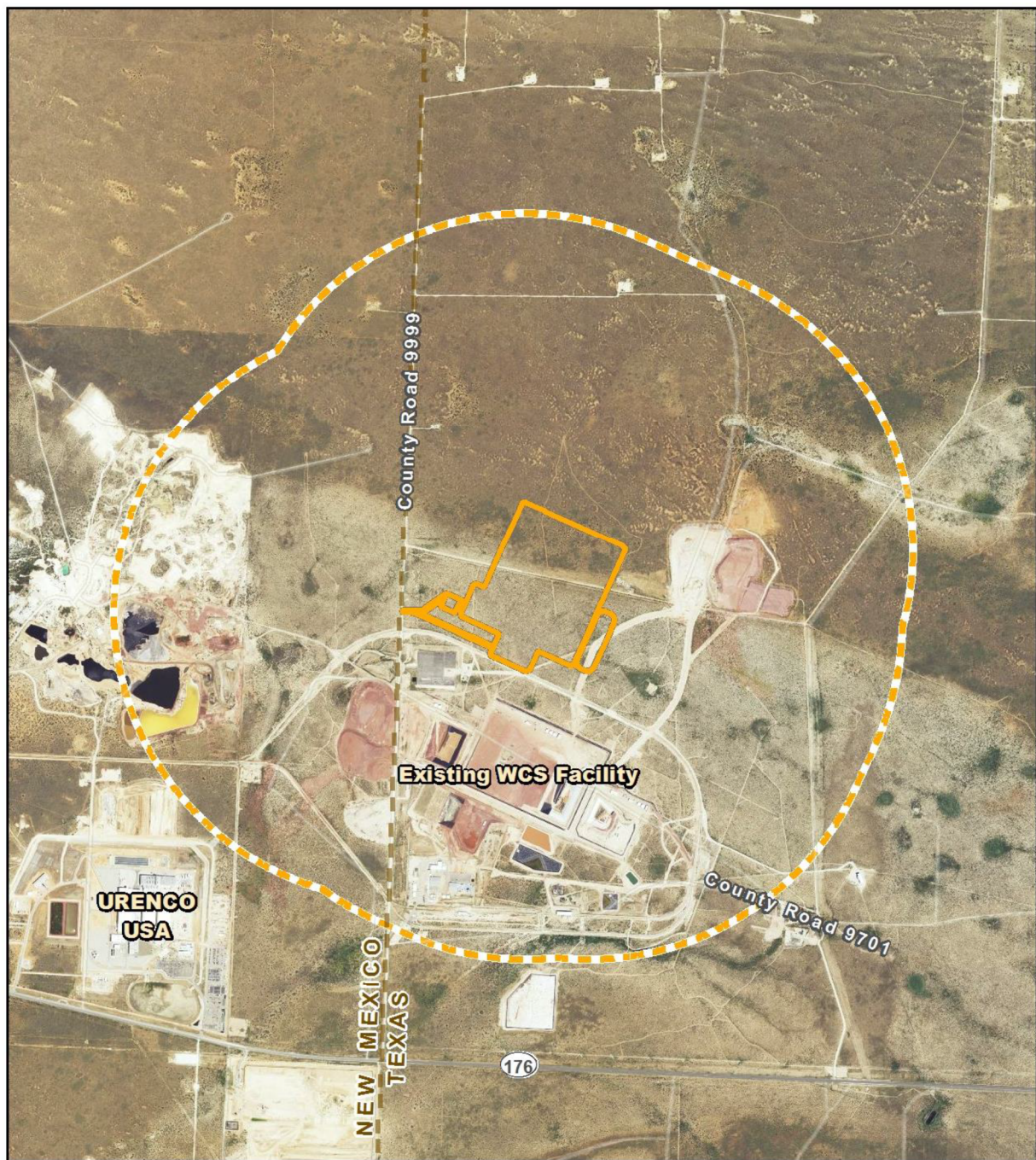
AMERICA'S NUCLEAR SOLUTION

## POTENTIAL ISFSI SITE RENDERINGS



**Figure 3**  
Potential Storage Facility Site Design Renderings



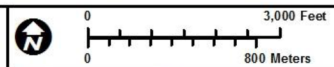


-  APE for Direct Impacts (project footprint)
-  APE for Indirect/Visual Impacts (1-mile radius)

Note: no previously recorded  
Texas resources mapped  
within either APE

Sources: THC (2015), TARL (2015)  
Aerial Source: NAIP (2014)

G:\Projects\WCS\Hist\_Figure 4\_APE\_20150428.mxd



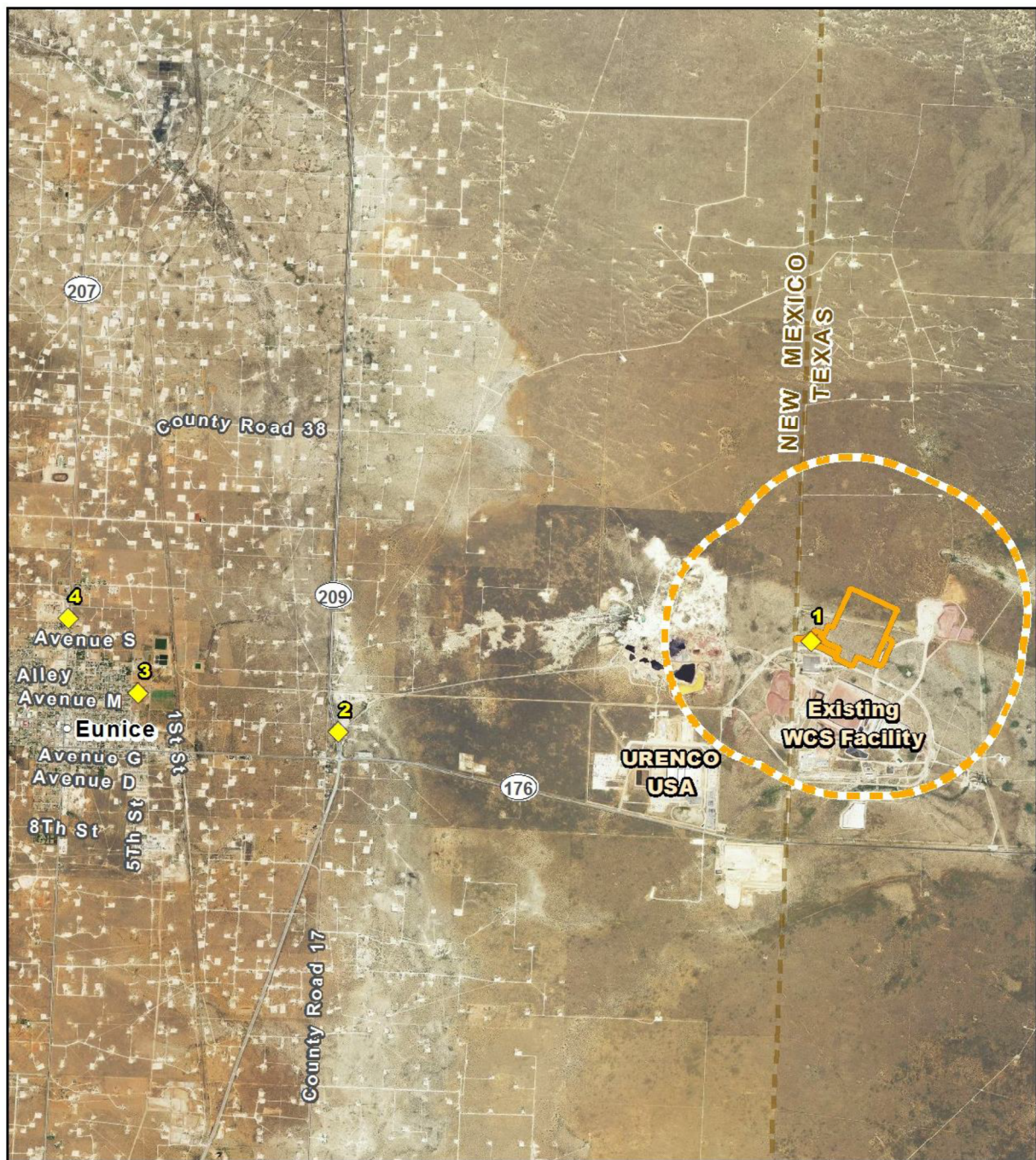
## Figure 4

### Location of Historic Area of Potential Effect

 **COX | McLAIN**  
Environmental Consulting

Prepared for: WCS	1 in = 3,000 feet
Prepared by: SL	Scale: 1:36,000
	Date: 5/4/2015

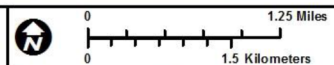




- APE for Direct Impacts (project footprint)
- APE for Indirect/Visual Impacts (1-mile radius)
- Photo Location

Source: CMEC (2015)  
Aerial Source: NAIP (2014)

G:\Projects\WCS\Hist\_Figure 5\_Viewshed Analysis\_20150430.mxd



## Figure 5

### Viewshed Analysis

**COX | McLAIN**  
Environmental Consulting

Prepared for: WCS	1 in = 1.25 miles
Prepared by: SL	Scale: 1:79,200
	Date: 5/1/2015



## Contextual Photographs



Photo 1. View of proposed site, looking north.





Photo 2. View from proposed site on WCS property looking southwest towards red soil pile (see Photo Point 1 on **Figure 5**).





Photo 3. View looking east towards the proposed site from Photo Point 2 (see **Figure 5**). Note the URENCO facility barely visible on the horizon.





Photo 4. View looking east from Photo Point 3 (see **Figure 5**).



Photo 5. View looking east from Photo Point 4 (see **Figure 5**).





Photo 6. Looking east near east side of archeological APE with eastern sand/gravel pit in background.  
Note disturbed, highly visible surface with common caliche fragments.



Photo 7. View west from east side of archeological APE. Red fill pile across Texas/New Mexico state line is visible in the background.





Photo 8. Close-up of typical ground surface. Note burrows. Also note mesquite stump fragment at lower left from previous clearing.



Susana Martinez  
Governor

STATE OF NEW MEXICO  
**DEPARTMENT OF CULTURAL AFFAIRS**  
**HISTORIC PRESERVATION DIVISION**

BATAAN MEMORIAL BUILDING  
407 GALISTEO STREET, SUITE 236  
SANTA FE, NEW MEXICO 87501  
PHONE (505) 827-6320 FAX (505) 827-6338

August 12, 2015

Emily Reed  
Cox/McLain Environmental Consulting  
6010 Balcones Drive New Mexico State Parks Division *Sk 210*  
~~1220 South St. Francis Dr.~~ *Austin, TX 78731*  
~~Santa Fe, NM 87501~~

RE: Consolidated Interim Spent Fuel Storage Facility (HPD log 101784)

Dear Ms. Reed,

On behalf of the New Mexico State Historic Preservation Officer (NMSHPO) I have completed a review of the information provided by Cox/McLain Environmental Consulting concerning the Consolidated Interim Spent Fuel Storage Facility in Andrews County, Texas. The NMSHPO appreciates your efforts to provide us with this information and to comment on the project's potential to affect historic properties in New Mexico. This letter provides NMSHPO comments for the project.

The SHPO concurs that no additional cultural resources identification efforts are needed for this undertaking with the condition that all new ground-disturbing and construction activities are confined to Texas. If, however, any construction related ground- disturbances such as staging areas, equipment or materials storage yards, or access roads are needed in New Mexico, then a cultural resource survey will be required to identify and evaluate historic properties in the area of potential effects.

If you have any questions or comments, please feel free to call me directly at (505) 827-4225 or email me [bob.estes@state.nm.us](mailto:bob.estes@state.nm.us).

Sincerely,

Bob Estes Ph.D.  
HPD Staff Archaeologist