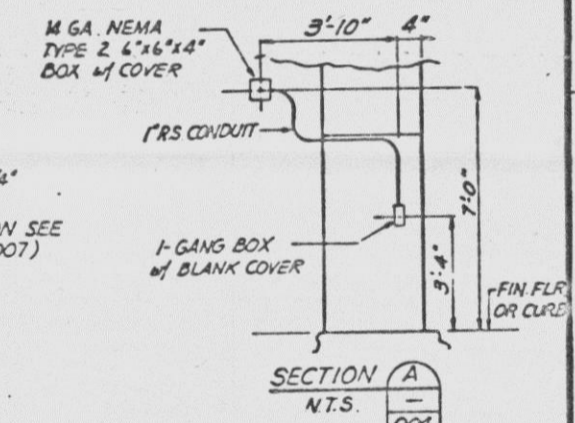
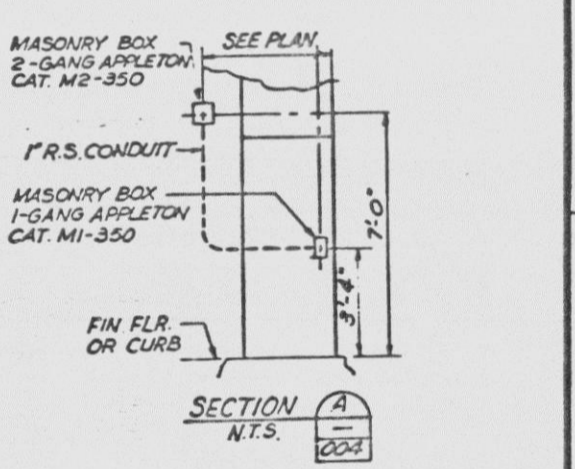
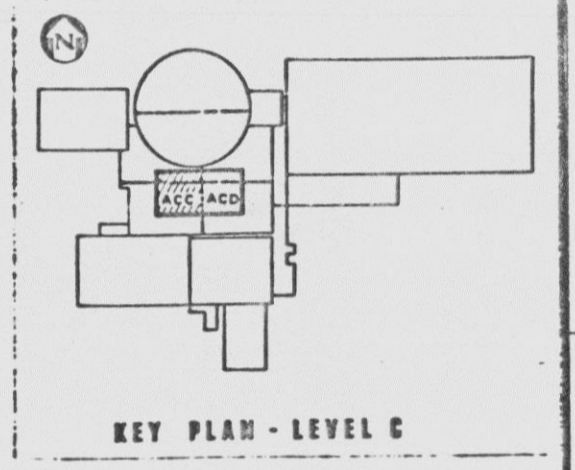
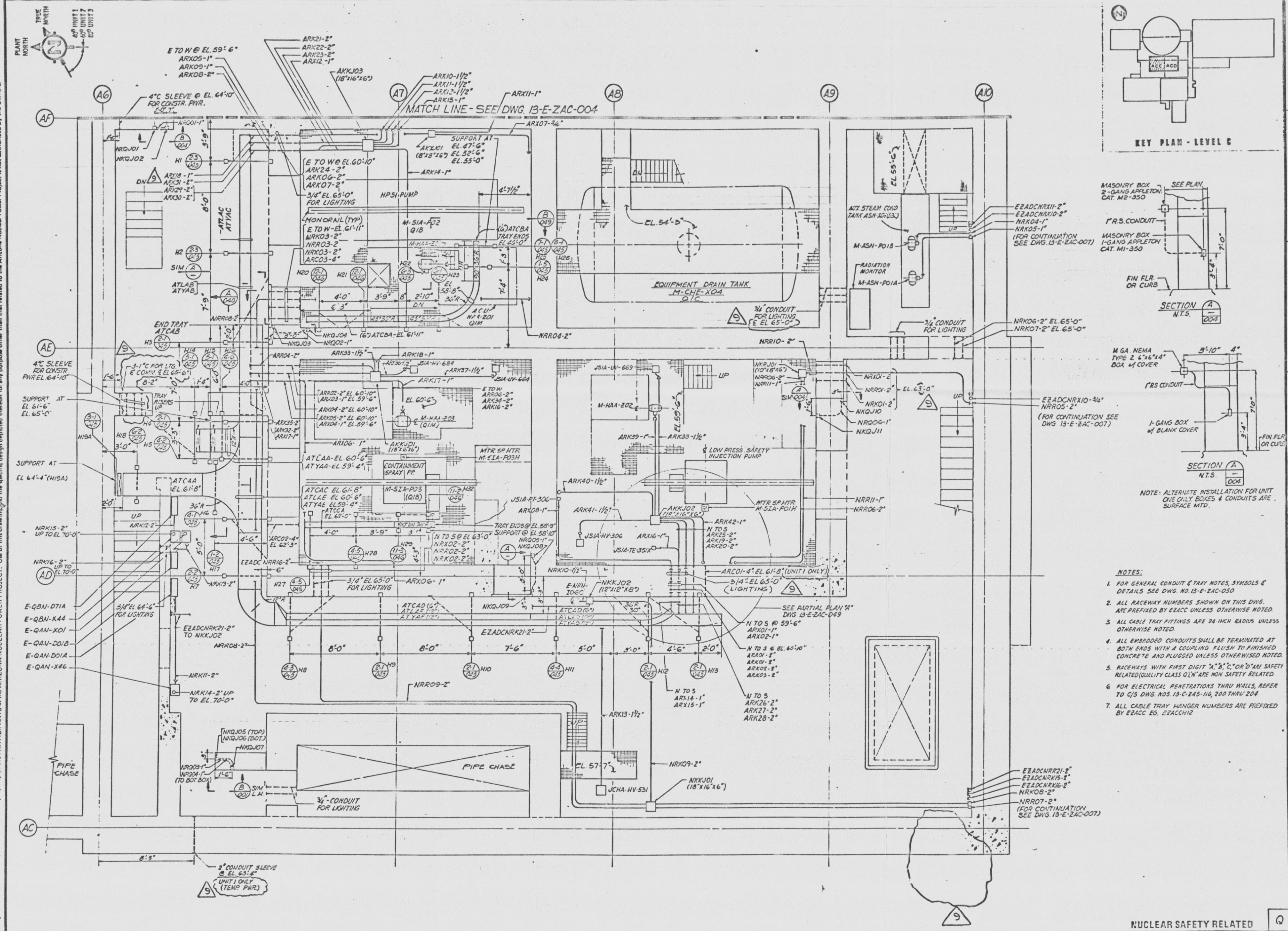


SCALING RULES

SCALE



- NOTES:
1. FOR GENERAL CONDUIT & TRAY NOTES, SYMBOLS & DETAILS SEE DWG. NO. 13-E-ZAC-050
  2. ALL RACEWAY NUMBERS SHOWN ON THIS DWG. ARE PREFIXED BY EBACC UNLESS OTHERWISE NOTED.
  3. ALL CABLE TRAY FITTINGS ARE 24 INCH RADII UNLESS OTHERWISE NOTED.
  4. ALL EMBEDDED CONDUITS SHALL BE TERMINATED AT BOTH ENDS WITH A COUPLING FLUSH TO FINISHED CONCRETE AND PLUGGED UNLESS OTHERWISE NOTED.
  5. RACEWAYS WITH FIRST DIGIT "A", "B", "C", OR "D" ARE SAFETY RELATED (QUALITY CLASS 0). "N" ARE NON SAFETY RELATED.
  6. FOR ELECTRICAL PENETRATIONS THRU WALLS, REFER TO C/S DWG. NOS. 13-C-245-116, 200 THRU 204.
  7. ALL CABLE TRAY HANGER NUMBERS ARE PREFIXED BY EBACC EG. E2AC412

This drawing has been produced by Bechtel and is the property of the PARTICIPANTS in the ARIZONA NUCLEAR POWER PROJECT. Use of this drawing for any purpose other than that related to the Arizona Nuclear Power Project is not authorized by the Owner.

REVISION		NO.		DATE		BY		CHKD		APP'D		REVISED		NO.		DATE		BY		CHKD		APP'D	
9	1/2	INCORPORATE	10/12/2012	10/12/2012	10/12/2012	10/12/2012	10/12/2012	10/12/2012	10/12/2012	10/12/2012	10/12/2012	10/12/2012	10/12/2012	10/12/2012	10/12/2012	10/12/2012	10/12/2012	10/12/2012	10/12/2012	10/12/2012	10/12/2012	10/12/2012	
8	1/2	INCORPORATE	10/12/2012	10/12/2012	10/12/2012	10/12/2012	10/12/2012	10/12/2012	10/12/2012	10/12/2012	10/12/2012	10/12/2012	10/12/2012	10/12/2012	10/12/2012	10/12/2012	10/12/2012	10/12/2012	10/12/2012	10/12/2012	10/12/2012	10/12/2012	
7	1/2	ADDED	BOSES & CONDUITS	10/12/2012	10/12/2012	10/12/2012	10/12/2012	10/12/2012	10/12/2012	10/12/2012	10/12/2012	10/12/2012	10/12/2012	10/12/2012	10/12/2012	10/12/2012	10/12/2012	10/12/2012	10/12/2012	10/12/2012	10/12/2012	10/12/2012	

NUCLEAR SAFETY RELATED

**BECHTEL**  
LOS ANGELES

ARIZONA NUCLEAR POWER PROJECT  
PALO VERDE NUCLEAR  
GENERATING STATION

AUXILIARY BLDG CONDUIT & TRAY  
PLAN AT EL. 51'-6" LEVEL C ZACC

SCALE 3/8" = 1'-0"	JOB NO. 10407	DRAWING NO. 13-E-ZAC-003	REV. 9
--------------------	---------------	--------------------------	--------