

NOT TO SCALE

NOTE: SEE TABLE 12.2-1 FOR IDENTIFICATION
OF NUMBERED LOCATIONS.

FIGURE 12.2-1

RADIATION SOURCE MODEL

RIVER BEND STATION

UPDATED SAFETY ANALYSIS REPORT

Security-Related Information
Figure Withheld Under 10 CFR 2.390

FIGURE 12.3-1

RADIATION ZONES — PLANT PLAN VIEW
EL 65'-0" TO 67'-6"

RIVER BEND STATION
UPDATED SAFETY ANALYSIS REPORT

Security-Related Information
Figure Withheld Under 10 CFR 2.390

FIGURE 12.3-2

RADIATION ZONES — PLANT PLAN VIEW
EL. 95'-0" TO 126'-0"

RIVER BEND STATION
UPDATED SAFETY ANALYSIS REPORT

REV 6 AUGUST 1993

Security-Related Information
Figure Withheld Under 10 CFR 2.390

FIGURE 12.3-3

RADIATION ZONES – PLANT PLAN VIEW
EL.123'-6" TO 148'-0"

RIVER BEND STATION
UPDATED SAFETY ANALYSIS REPORT

Security-Related Information
Figure Withheld Under 10 CFR 2.390

FIGURE 12.3-4

RADIATION ZONES — PLANT PLAN VIEW
EL. 113' & 114'; 162'-3"
& 170'; 166'; 186'-3"

RIVER BEND STATION
UPDATED SAFETY ANALYSIS REPORT

Security-Related Information
Figure Withheld Under 10 CFR 2.390

FIGURE 12.3-5A

RADIATION ZONES — PLAN VIEW OF
SERVICES BUILDING EL. 123'-6"

RIVER BEND STATION
UPDATED SAFETY ANALYSIS REPORT

Security-Related Information
Figure Withheld Under 10 CFR 2.390

FIGURE 12.3-5B

RADIATION ZONES — PLAN VIEW OF
SERVICES BUILDING EL 109'-3"

RIVER BEND STATION
UPDATED SAFETY ANALYSIS REPORT

Security-Related Information
Figure Withheld Under 10 CFR 2.390

FIGURE 12.3–6
SHIELDING ARRANGEMENT AND FACILITIES EL. 65’–0” TO 67’–6”
RIVER BEND STATION UPDATED SAFETY ANALYSIS REPORT REVISION 15MAY 2002

Security-Related Information
Figure Withheld Under 10 CFR 2.390

FIGURE 12.3–7

SHIELDING ARRANGEMENT AND
FACILITIES – EL 95’–0” TO 126’–0”

RIVER BEND STATION
UPDATED SAFETY ANALYSIS REPORT
REVISION 15 MAY 2002

Security-Related Information
Figure Withheld Under 10 CFR 2.390

FIGURE 12.3-8
SHIELDING ARRANGEMENT AND FACILITIES-EL.123'-6" TO 148'-0"
RIVER BEND STATION UPDATED SAFETY ANALYSIS REPORT

Security-Related Information
Figure Withheld Under 10 CFR 2.390

FIGURE 12.3–9
SHIELDING ARRANGEMENT AND FACILITIES—EL. 113' & 114'; 162'–3" & 170'; 186'–3"
RIVER BEND STATION UPDATED SAFETY ANALYSIS REPORT REVISION 15MAY 2002

**(THIS FIGURE HAS
BEEN DELETED)**

FIGURE 12.3-10A

**RADIATION ZONES — PLAN VIEW OF
SERVICES BUILDING EL. 123'-6"**

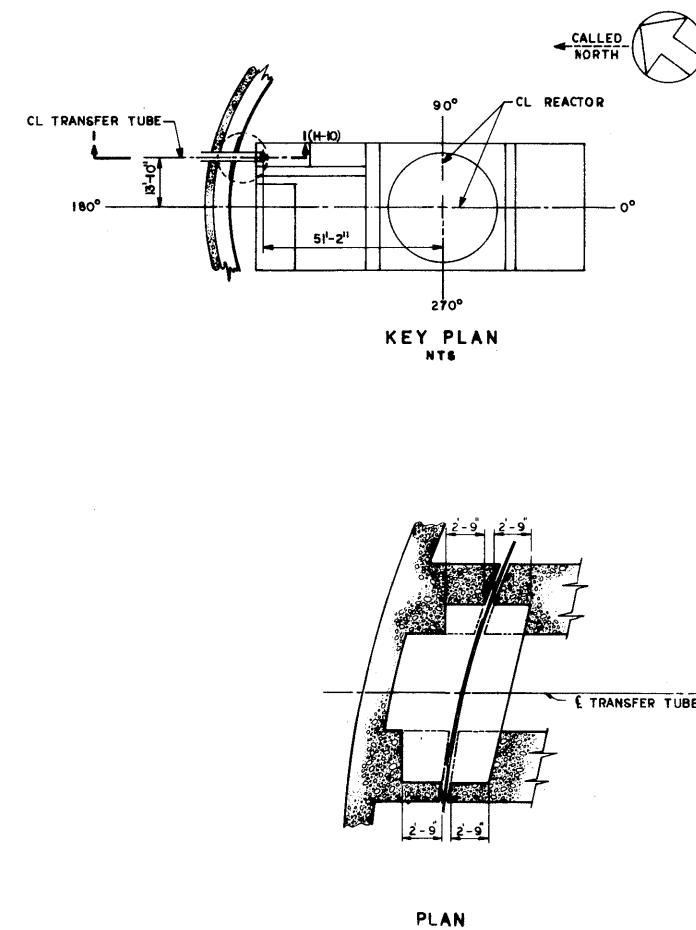
**RIVER BEND STATION
UPDATED SAFETY ANALYSIS REPORT**

**(THIS FIGURE HAS
BEEN DELETED)**

FIGURE 12.3-10B

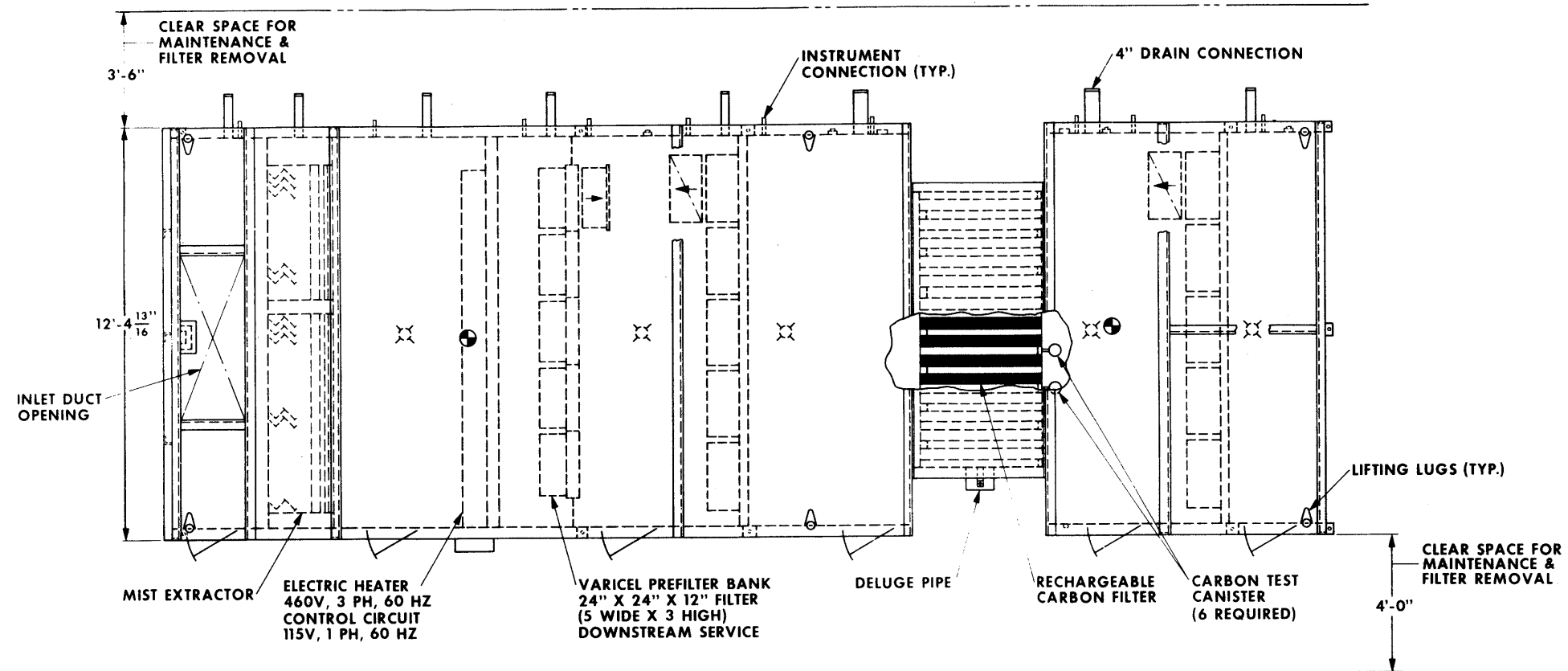
**RADIATION ZONES — PLAN VIEW OF
SERVICES BUILDING EL 109'-3"**

**RIVER BEND STATION
UPDATED SAFETY ANALYSIS REPORT**



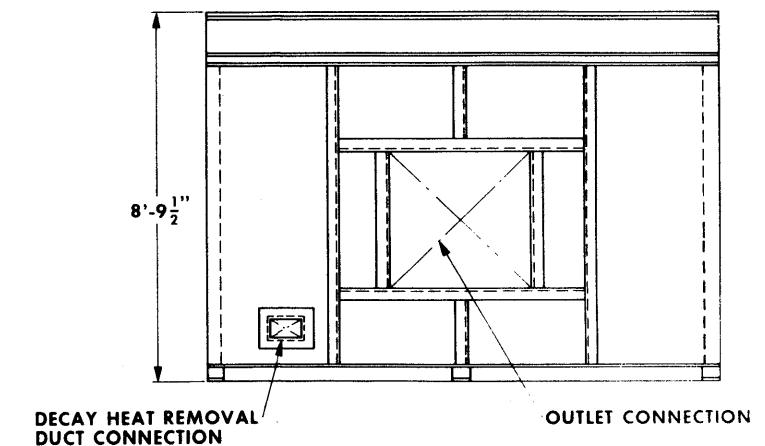
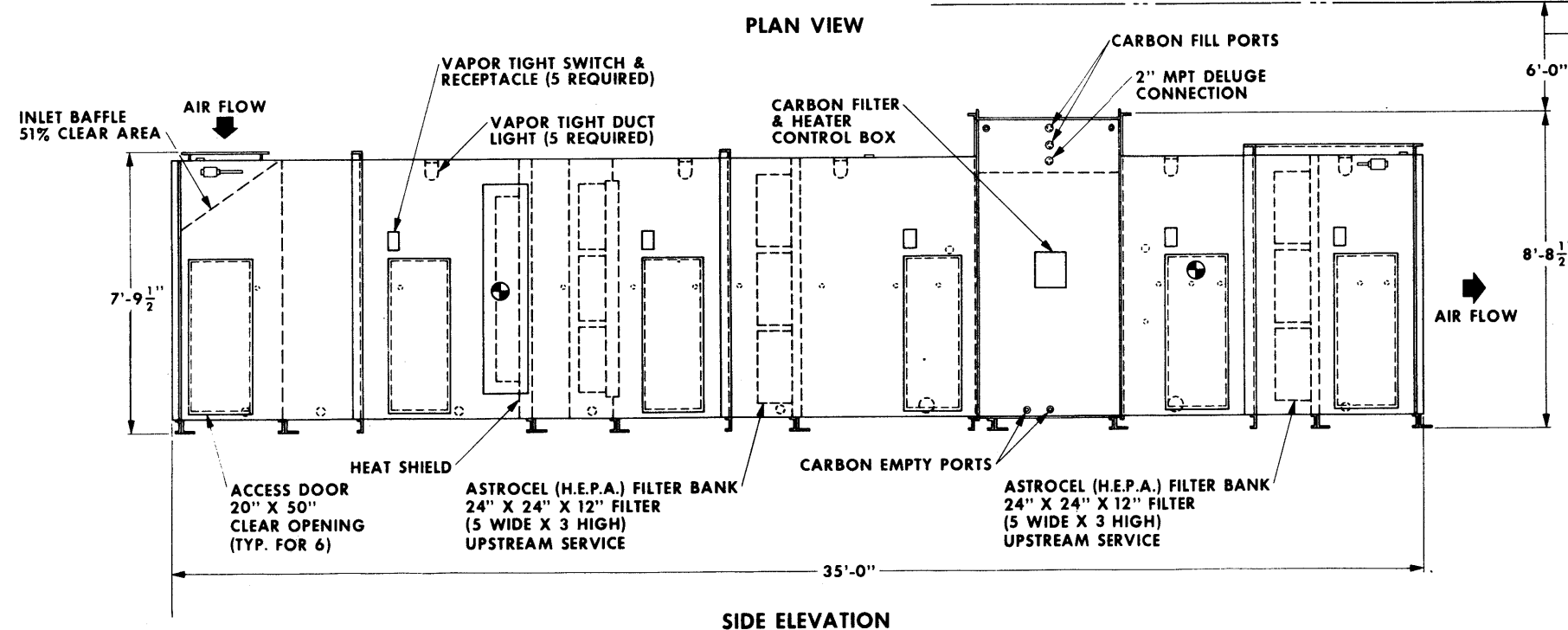
RIVER BEND STATION

UPDATED SAFETY ANALYSIS REPORT



NOTES

1. SERVICE CAPACITY: 12,500 CFM @ 10 INCHES W.G. STATIC PRESSURE WITH DIRTY FILTERS
2. FILL & EMPTY PORTS ARE 2" PIPING WITH QUICK DISCONNECTS
3. DELUGE SYSTEM CAPACITY: 67.5 GPM TOTAL
4. TOTAL SHIPPING WEIGHT: 21,900 LBS
TOTAL OPERATING WEIGHT: 27,000 LBS
5. ⊙ INDICATES CENTER OF GRAVITY FOR EACH HOUSING. UNIT SHIPPED IN TWO SECTIONS

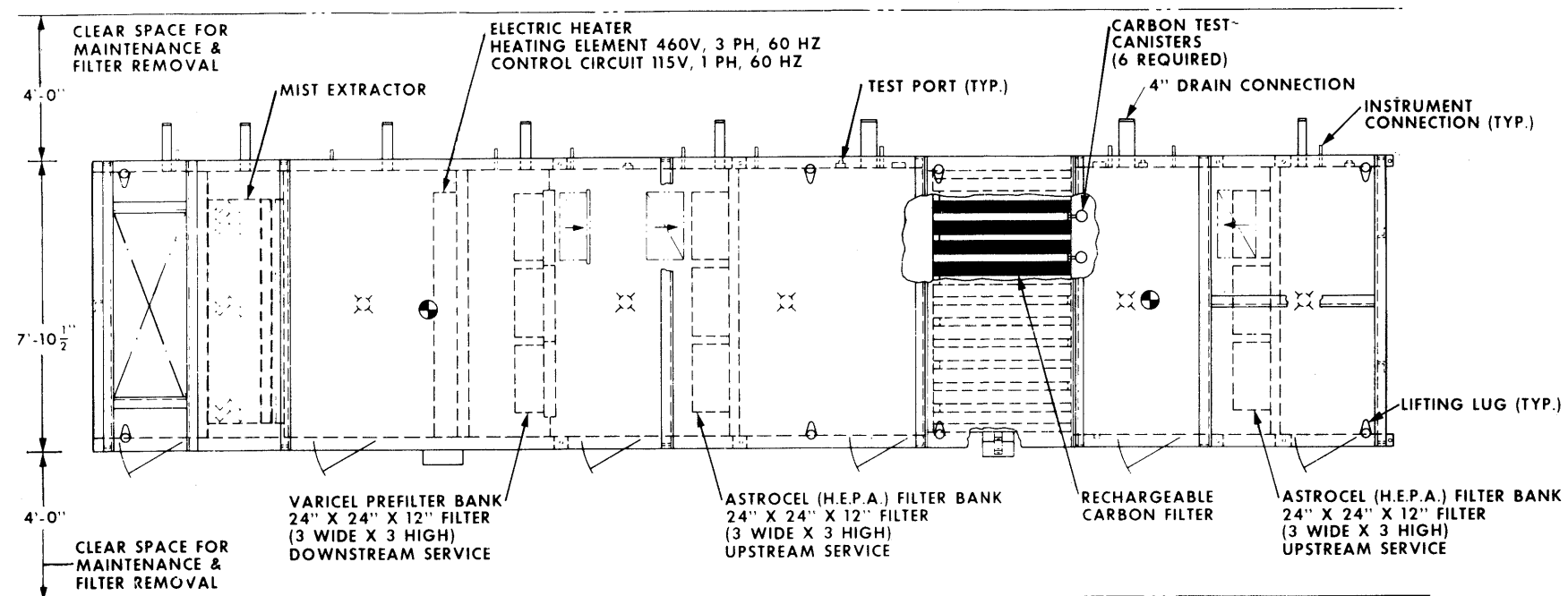


END ELEVATION

FIGURE 12.3-12

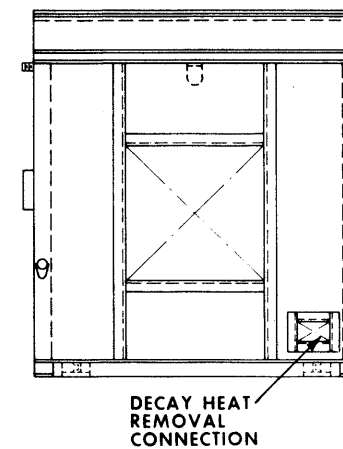
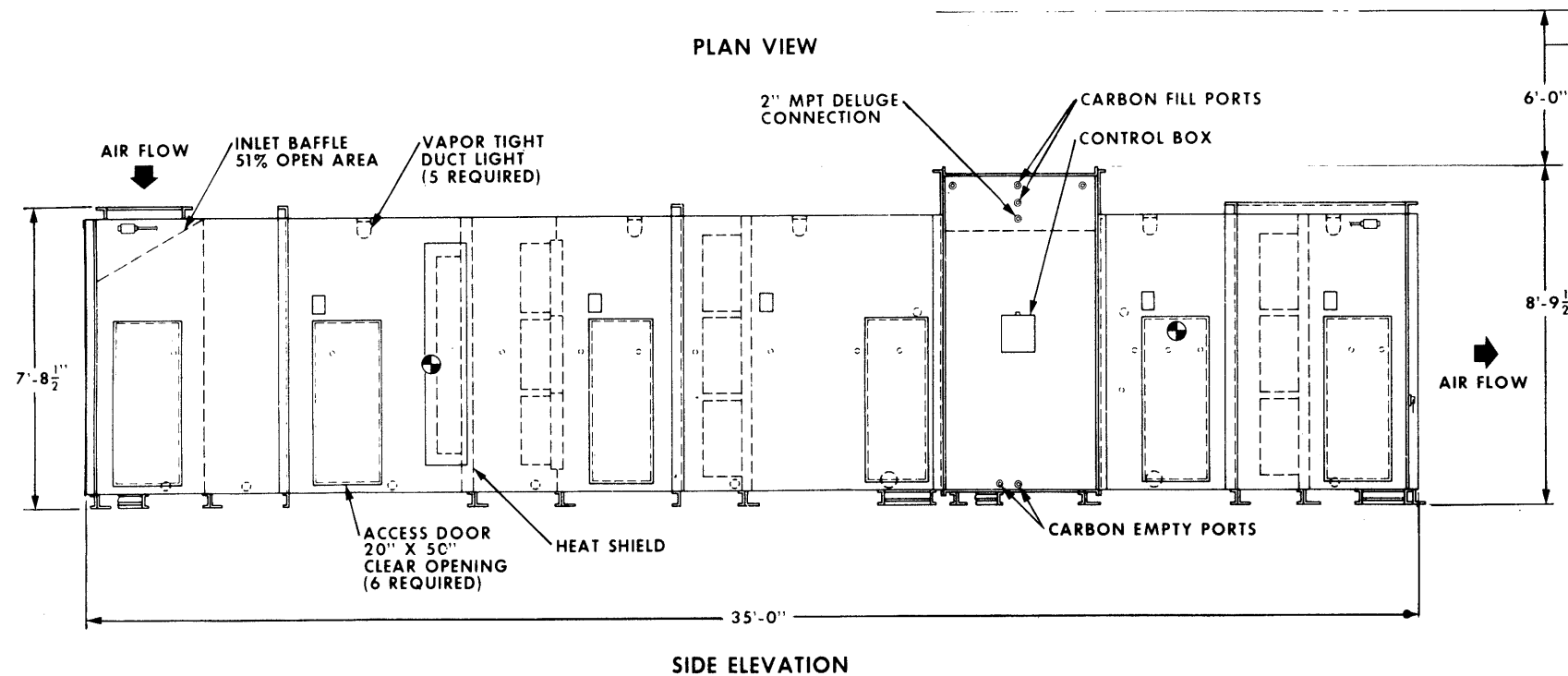
STANDBY GAS TREATMENT SYSTEM

RIVER BEND STATION
UPDATED SAFETY ANALYSIS REPORT



NOTES:

1. UNIT CAPACITY: 10,000 CFM @ 10 INCHES W.G. STATIC PRESSURE WITH DIRTY FILTERS
2. FILL & EMPTY PORTS ARE 2" PIPE WITH QUICK DISCONNECTS
3. DELUGE SYSTEM CAPACITY: 45 GPM TOTAL
4. TOTAL SHIPPING WEIGHT: 16,000 LBS
TOTAL OPERATING WEIGHT: 20,000 LBS
5. ● INDICATES CENTER OF GRAVITY OF EACH SECTION. EACH UNIT CONSISTS OF TWO SECTIONS

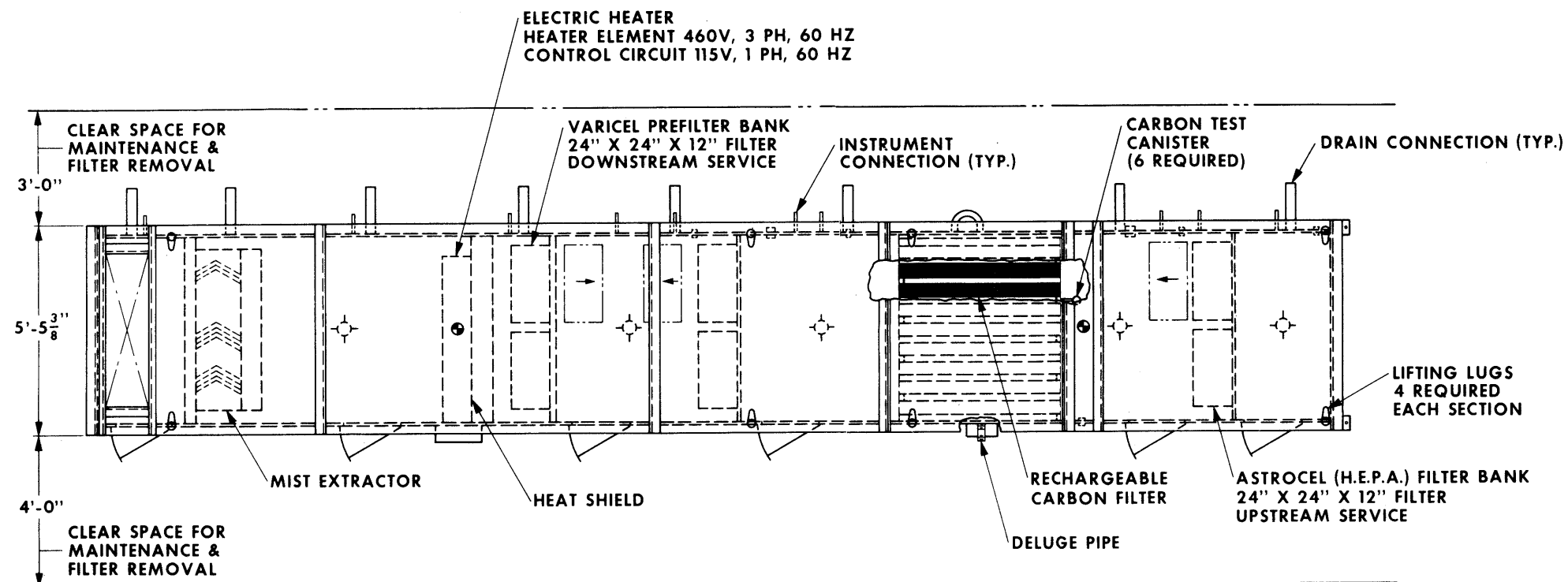


END ELEVATION

FIGURE 12.3-13

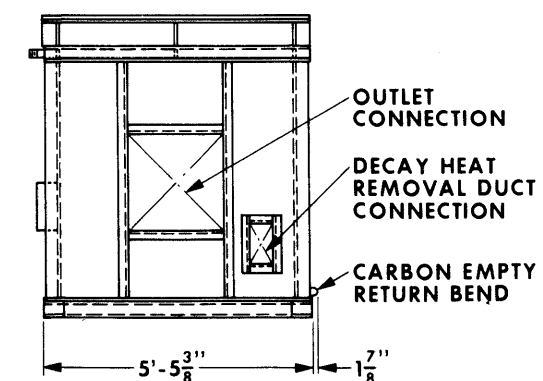
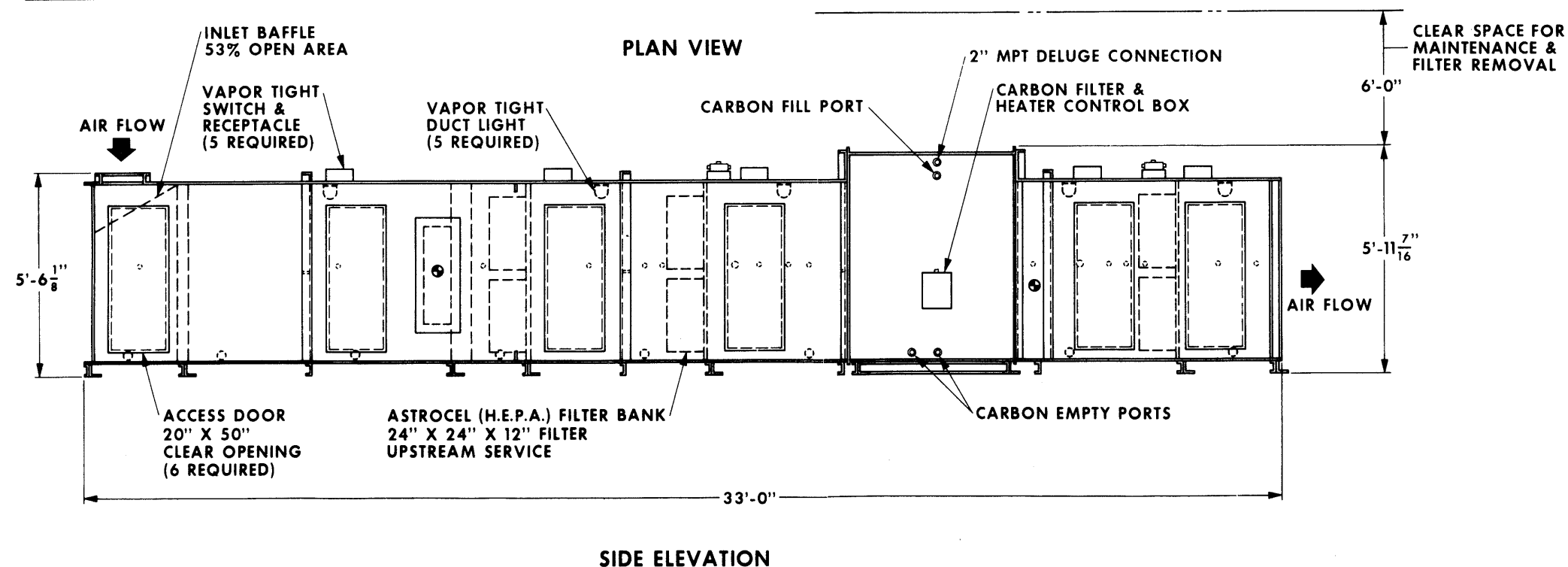
FUEL BUILDING
CHARCOAL FILTRATION SYSTEM

RIVER BEND STATION
UPDATED SAFETY ANALYSIS REPORT



NOTES

1. UNIT CAPACITY: 4000 CFM @ 10 INCHES W.G. STATIC PRESSURE WITH DIRTY FILTERS
2. FILL & EMPTY PORTS ARE 2" PIPE WITH QUICK DISCONNECTS
3. DELUGE SYSTEM CAPACITY: 18 GPM TOTAL
4. TOTAL SHIPPING WEIGHT: 10,200 LBS (APPROX.)
TOTAL OPERATING WEIGHT: 12,300 LBS (APPROX.)
5. ● INDICATES CENTER OF GRAVITY FOR EACH HOUSING SECTION. UNIT SHIPPED IN TWO SECTIONS



END ELEVATION

FIGURE 12.3-14

MAIN CONTROL ROOM
CHARCOAL FILTRATION SYSTEM

RIVER BEND STATION
UPDATED SAFETY ANALYSIS REPORT

Security-Related Information

Figure Withheld Under 10 CFR 2.390

FIGURE 12.3-15, SHEET 1

POST-LOCA VITAL AREA ACCESS-
ROUTES TO AND FROM MAIN PLANT
EXHAUST DUCT MONITOR
GRAB SAMPLE AREA

RIVER BEND STATION
UPDATED SAFETY ANALYSIS REPORT
REVISION 19

Security-Related Information

Figure Withheld Under 10 CFR 2.390

FIGURE 12.3-15, SHEET 2

POST-LOCA VITAL AREA ACCESS—ROUTES
TO AND FROM MAIN PLANT EXHAUST
DUCT MONITOR GRAB SAMPLE AREA

RIVER BEND STATION

UPDATED SAFETY ANALYSIS REPORT

Security-Related Information
Figure Withheld Under 10 CFR 2.390

FIGURE 12.3-15, SHEET 3

POST-LOCA VITAL AREA ACCESS—ROUTES
TO AND FROM MAIN PLANT EXHAUST
DUCT MONITOR GRAB SAMPLE AREA

RIVER BEND STATION

UPDATED SAFETY ANALYSIS REPORT
REV 6 AUGUST 1993

Security-Related Information
Figure Withheld Under 10 CFR 2.390

FIGURE 12.3-15, SHEET 4

POST-LOCA VITAL AREA ACCESS—ROUTES
TO AND FROM MAIN PLANT EXHAUST
DUCT MONITOR GRAB SAMPLE AREA

RIVER BEND STATION
UPDATED SAFETY ANALYSIS REPORT

Security-Related Information
Figure Withheld Under 10 CFR 2.390

FIGURE 12.3-15, SHEET 5

POST-LOCA VITAL AREA ACCESS—ROUTES
TO AND FROM MAIN PLANT EXHAUST
DUCT MONITOR GRAB SAMPLE AREA

RIVER BEND STATION

UPDATED SAFETY ANALYSIS REPORT

Security-Related Information
Figure Withheld Under 10 CFR 2.390

FIGURE 12.3-15, SHEET 6

POST-LOCA VITAL AREA ACCESS —
ROUTES TO AND FROM MAIN PLANT
EXHAUST DUCT MONITOR
GRAB SAMPLE AREA

RIVER BEND STATION
UPDATED SAFETY ANALYSIS REPORT

Security-Related Information

Figure Withheld Under 10 CFR 2.390

FIGURE 12.3-15, SHEET 7

POST-LOCA VITAL AREA ACCESS—ROUTES
TO AND FROM MAIN PLANT EXHAUST
DUCT MONITOR GRAB SAMPLE AREA

RIVER BEND STATION

UPDATED SAFETY ANALYSIS REPORT

Security-Related Information
Figure Withheld Under 10 CFR 2.390

FIGURE 12.3-16, SHEET 1

POST-LOCA VITAL AREA ACCESS —
ROUTES TO AND FROM POST-ACCIDENT
SAMPLE PANEL

RIVER BEND STATION
UPDATED SAFETY ANALYSIS REPORT

Security-Related Information
Figure Withheld Under 10 CFR 2.390

FIGURE 12.3-16, SHEET 2

POST-LOCA VITAL AREA ACCESS—ROUTES
TO AND FROM POST-ACCIDENT SAMPLE
PANEL

RIVER BEND STATION
UPDATED SAFETY ANALYSIS REPORT

Security-Related Information
Figure Withheld Under 10 CFR 2.390

FIGURE 12.3-16, SHEET 3

POST-LOCA VITAL AREA ACCESS —
ROUTES TO AND FROM POST-ACCIDENT
SAMPLE PANEL

RIVER BEND STATION

UPDATED SAFETY ANALYSIS REPORT

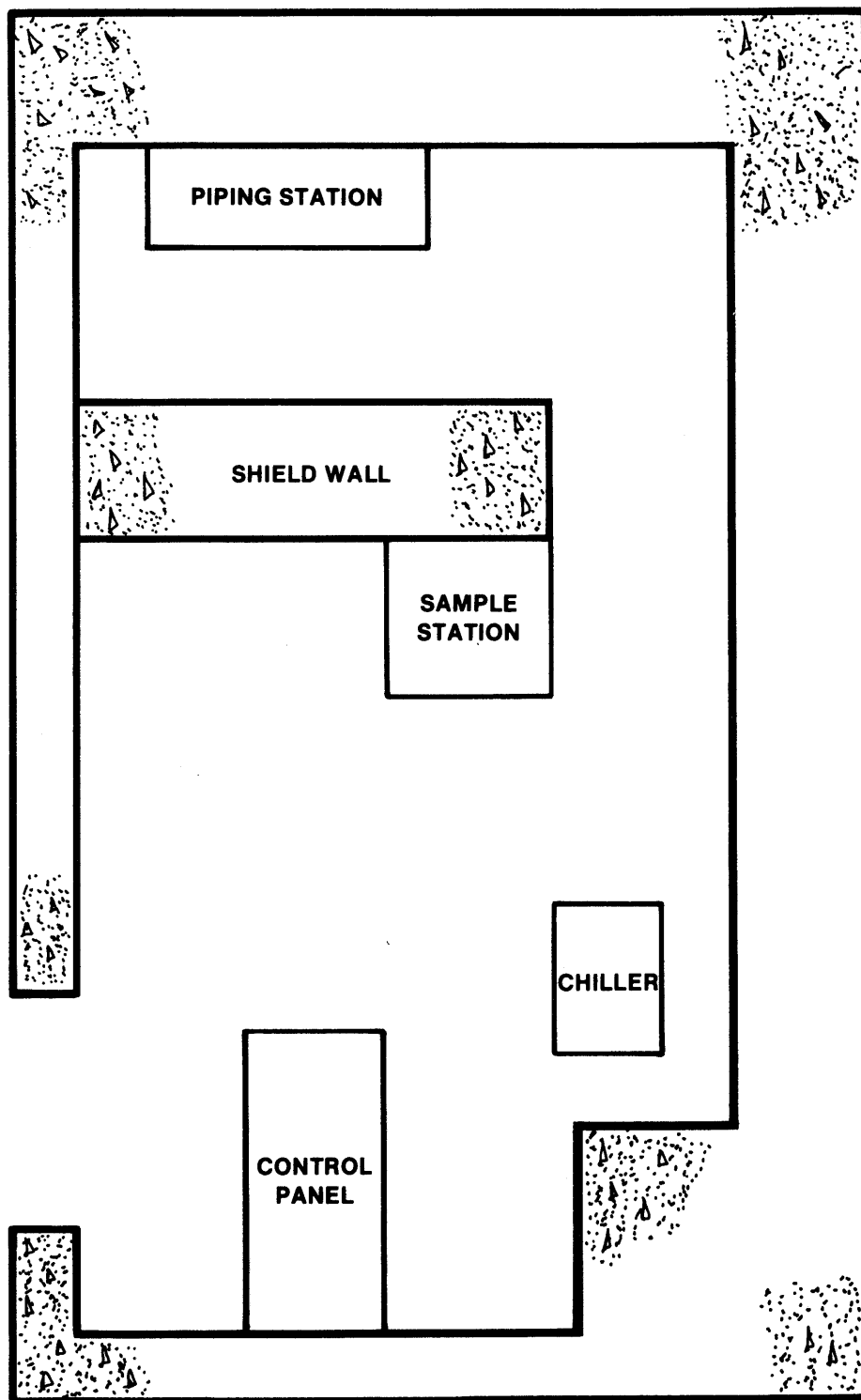


FIGURE 12.3-17

POST-ACCIDENT SAMPLE ROOM

RIVER BEND STATION
FINAL SAFETY ANALYSIS REPORT