

light,

9/12/16 MUDG-2 475-489

475-477 med to very coarse, oolitic, slightly ex, well rounded
 some clay clasts
 477-478.3 same but oxidized
 478.3-481 reduced, poorly sorted, med to coarse gravel, oolitic
 finer upward to a medium coarse sand
 481-489 very fine silt, sporadic gravel lenses, reduced
 487.5-488 carbon, dark grey

Grains = 13 MR/hr B166
 475-476 = 0
 476-477 = 0
 477-478 = 0
 478-479 = 7-9 MR/hr
 479-480 = 7-9
 480-481 = 7-9
 481-482 = 7-9
 482-483 = 5-6
 483-484 = 2-4
 484-485 = 2-4
 485-486 = 2-4
 486-487 = 2-4
 487-487.5 = 15-20
 487.5-488 = 30
 488-489 = 7-10

✓ 477 to 478 potential chem, oxidized

✓ 487.3 to 488.5 XRD cond

✓ ~~483-484~~ physical
 ✓ 482-483 physical

[illegible]

LOG PARAMETERS

MATRIX DENSITY : 2.65

NEUTRON MATRIX : SANDSTONE

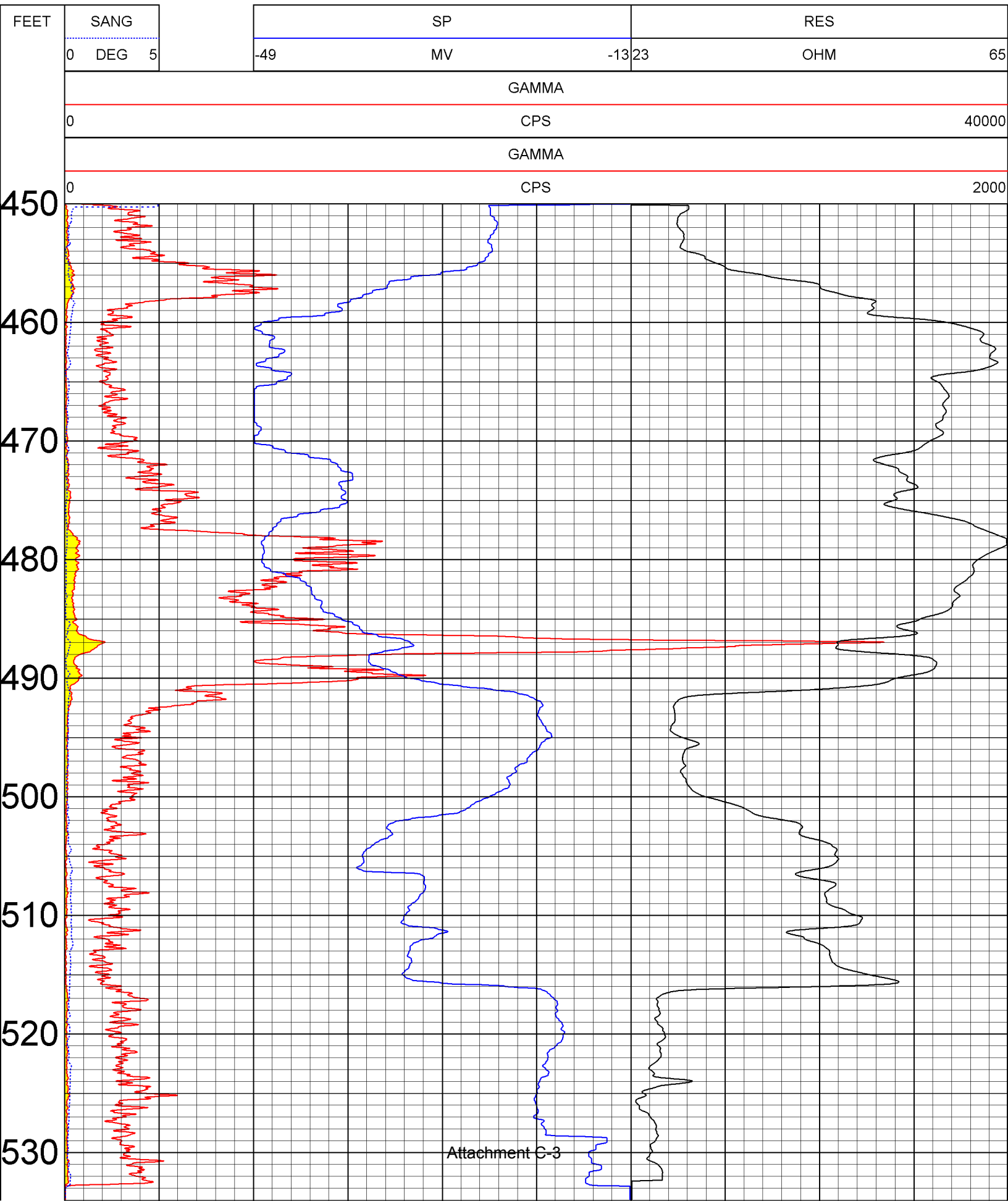
MATRIX DELTA T : 54

MAGNETIC DECL : 14.000

ELECT. CUTOFF : 99999

BIT SIZE : 6.25

PRESENTATION NAME/DATE = 9144C.0 06/18/2009



9/20/16

DG-3 515' to 530'

515-522 R fine, well sorted

522-530 medium, fine to gravel, poorly

528.5 lignite lens

core Bkg 3 m/R

515-516 0

516-517 0

517-518 0

518-519 0

519-520 0

520-521 0

521-522 0

522-523 0

523-524 0

524-525 0

525-526 0

526-527 0

527-528 0

528-529 0

529-530 0

Phgs

6 530

BKG 3 MR/hr Gamma

530-545 all 6

543-544 Chem

530-545 All poorly sorted fine to med, grey, rounded
 544.0 to 545 larger grain size

545-547

545.0 to 545.3 grey

of coal

547-548.7 calcite cemented, poorly sorted fine to coarse, white

very fine sand, silty, minor clay content, grey to
 blue grey

- 532

very coarse sand, grey to olive green

very shale

Gamma

545-558 All Bkg 3

✓ 524-

Perm./Physice

✓ 551.0-

Perm./Physical

✓ 543-544

Chem.

16/5

11:30

LOG PARAMETERS

MATRIX DENSITY : 2.65

NEUTRON MATRIX : SANDSTONE

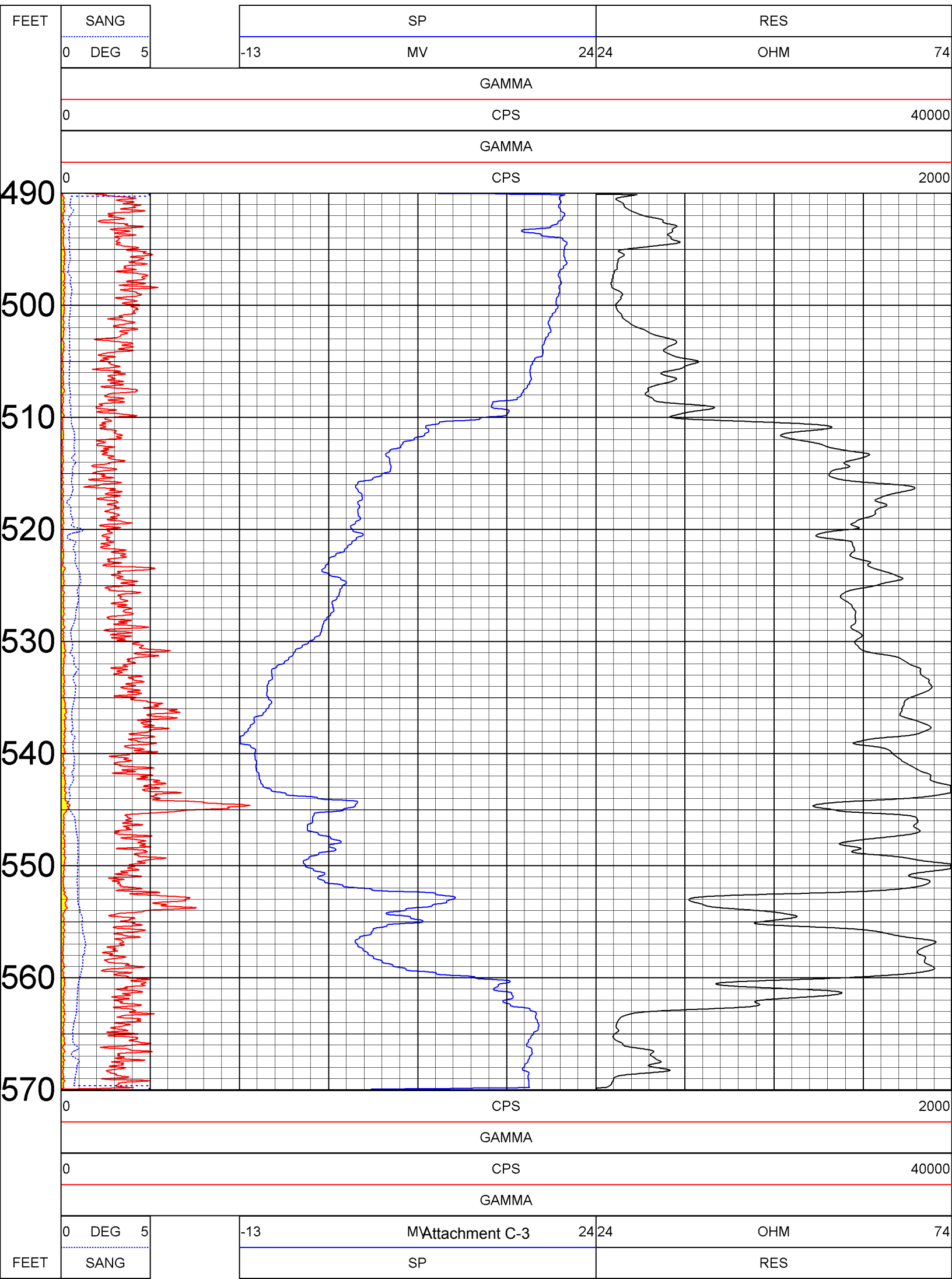
MATRIX DELTA T : 54

MAGNETIC DECL : 14.000

ELECT. CUTOFF : 99999

BIT SIZE : 5.625

PRESENTATION NAME/DATE = 9144C.0 06/18/2009



10/17/16

B 7 m R/hr

501-501.5 4

45-495.8

to grey, fine to med

495-496.7

calcite common, light grey, fine to coarse

496.7-498.5

light grey, fine to med.

498.5-501

dark grey, fine to very coarse

501-501.2

calcite, fine

501.2-501.7

very fine clay, o wt, well sorted

501.7-503

calcite

503-510

dark grey, fine to medium, few carbon clasts

500.5-501 physl perm calcite

Any 503 to 0 for perm phys

nothing great for chem

Gamma
Bkg
All back

50-525

514.5

515-

516

517.5

10/18/16
*50

10/18/16 DG-4 516-525

Gamma

Bkg 14 μ R/hr

All background

525 All light gray, all rounded

514.5 - 514.7 med to coarse

stringer

fine to med.

chem / min
phys perm

10/18/16 DG-4

525-535

No oxidation throughout

/hr
S =

Bkg

Bkg

525-529; med well sorted median to coarse sand, some clay clasts
clasts
sand, 50% clay content,

sorted fine to med. sand.
Med. to coarse

LOG PARAMETERS

MATRIX DENSITY : 2.65

NEUTRON MATRIX : SANDSTONE

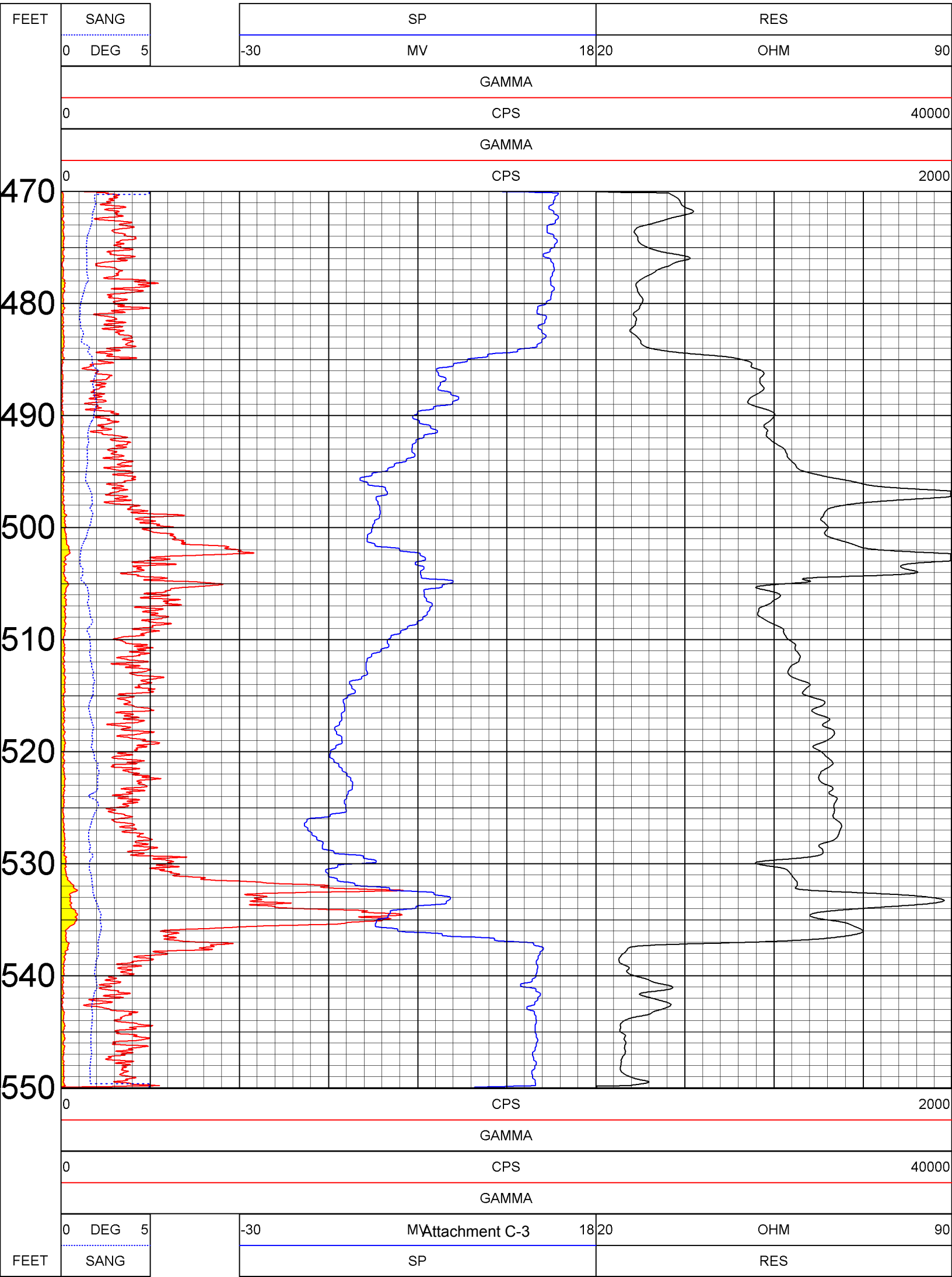
MATRIX DELTA T : 54

MAGNETIC DECL : 14.000

ELECT. CUTOFF : 99999

BIT SIZE : 6.25

PRESENTATION NAME/DATE = 9144C.0 06/18/2009



10/5/16

11

520-535

lost

533.5-535

521.9-522.2

oxidized red / ferric, fine to medium

-

light gray, fine to medium

525-527

oxidized, med to coarse

527-528

oxidized, med to gravel 528-529, possible then
some carbon, 528-529 very oxidized or perm
slightly oxidized, some carbon, fine to coarse, poorly
sorted

Gamma

520-521

0

521-522

0

522-523

0

523-524

0

524-525

0

524.4 2

525-526

0

526-527

0

527-528

0

528-529

0

529-530

0

530-531

0

532-533

0

533-533.5

0

	1	2	3	4	5	6	7	8	9	10	11	12
		15116										
1												
2	535-536		SS, light gray to pale yellow, med to very coarse, moderately well cemented, med sorted								550-553	
3												
4												
5	535.4-536		SS, gray, med to coarse grain, slight conglomerate									
6												
7	538		SS, med to very coarse, light gray to trace pale orange								555-556	
8												
9	541.8		SS, moderately cemented, gray, med coarse								553.6	
10												
11	542		clay, red									
12												
13	544		SS coarse to very coarse, coarsening downward, pale yellow to pale orange light gray, slightly oxidized								556.7	
14												
15											558.6	
16	544-545.5		SS, gray to gray, fine to very coarse, med conglomerate, moderately well cemented									
17												
18												
19	545.5-547		SS fine to light gray, med to coarse, orange, carbon									
20												
21												
22	547.7-548.5		SS, orange to very coarse, med conglomerate, loosely consolidated to coarse, with gray and brown clasts									
23												
24												
25												
26			Gummers	BKg 14								
27			535-36	0								
28			-37	0								
29			-38									
30			-39	2								
31			539-40									
32			-41									
33												
34				0								
35			-44	0								
36				0								
37			-46	0								
38			4									
39			547-4	0								
40												
41												
42												

10/6/16

fine to medium, pale yellow

553.4 - 555

oxidized

555.5 - 556

555.6 - 556

caliche cement

556 - 556.7

fine, well sorted, clay cement

556.7 - 558.6

fine to med. pale yellow, fine to med. slight ox

558.6 - 560.7

ox, fine red, med to coarse

556 - 556.5

DCM

528.0 - 528.5

Phy

Chem and DCM

552 - 553

Phy

R/hr

LOG PARAMETERS

MATRIX DENSITY : 2.65

NEUTRON MATRIX : SANDSTONE

MATRIX DELTA T : 54

MAGNETIC DECL : 14.000

ELECT. CUTOFF : 99999

BIT SIZE : 6.25

PRESENTATION NAME/DATE = 9144C.0 06/18/2009

