

Links to Scientific Publications and News Reports about Subsidence and Sinkholes in West Texas Detected by Satellite Radar Imagery

NRC-2018-0052

2016

Ongoing deformation of sinkholes in Wink, Texas, observed by time-series Sentinel-1A SAR Interferometry - <http://www.mdpi.com/2072-4292/8/4/313/html> [Jin-Woo Kim, Zhong Lu, 2016 April 8] **pdf:** <http://www.mdpi.com/2072-4292/8/4/313/pdf>

Geohazard: Giant sinkholes near West Texas oil patch towns are growing — as new ones lurk - <http://blog.smu.edu/research/2016/06/13/geohazard-giant-sinkholes-near-west-texas-oil-patch-towns-are-growing-as-new-ones-lurk/>

Sinkhole Warnings Don't Faze West Texas - <https://www.texastribune.org/2016/07/12/west-texas-county-unfazed-headlines-portending-sin/>

Texas: Giant unstable sinkholes are growing, could be on verge of catastrophic collapse - <https://www.ibtimes.co.uk/texas-giant-unstable-sinkholes-are-growing-could-be-verge-catastrophic-collapse-1565636>

2018

Association between localized geohazards in West Texas and human activities, recognized by Sentinel-1A/B satellite radar imagery - <https://www.nature.com/articles/s41598-018-23143-6> [Jin-Woo Kim, Zhong Lu, 2018 March 16] **pdf:** <https://www.nature.com/articles/s41598-018-23143-6.pdf>

Radar images show large swath of West Texas oil patch is heaving and sinking at alarming rates - <http://blog.smu.edu/research/2018/03/20/radar-images-show-large-swath-of-texas-oil-patch-is-heaving-and-sinking-at-alarming-rates/>

Large Swath of Texas Oil Patch Rapidly Sinking and Uplifting, Study Finds - <https://www.ecowatch.com/west-texas-sinkhole-2551781426.html>

Large portions of West Texas sinking at alarming rate, new report finds - <https://www.texastribune.org/2018/03/22/report-says-large-portions-west-texas-counties-are-sinking-alarming-ra/>

More Sinkholes for West Texas? - <https://www.texasmonthly.com/politics/sinkholes-west-texas/>

SUNSI Review Complete

Template = ADM-013

E-RIDS=ADM-03

ADD= Antoinette Walker-Smith, Jill

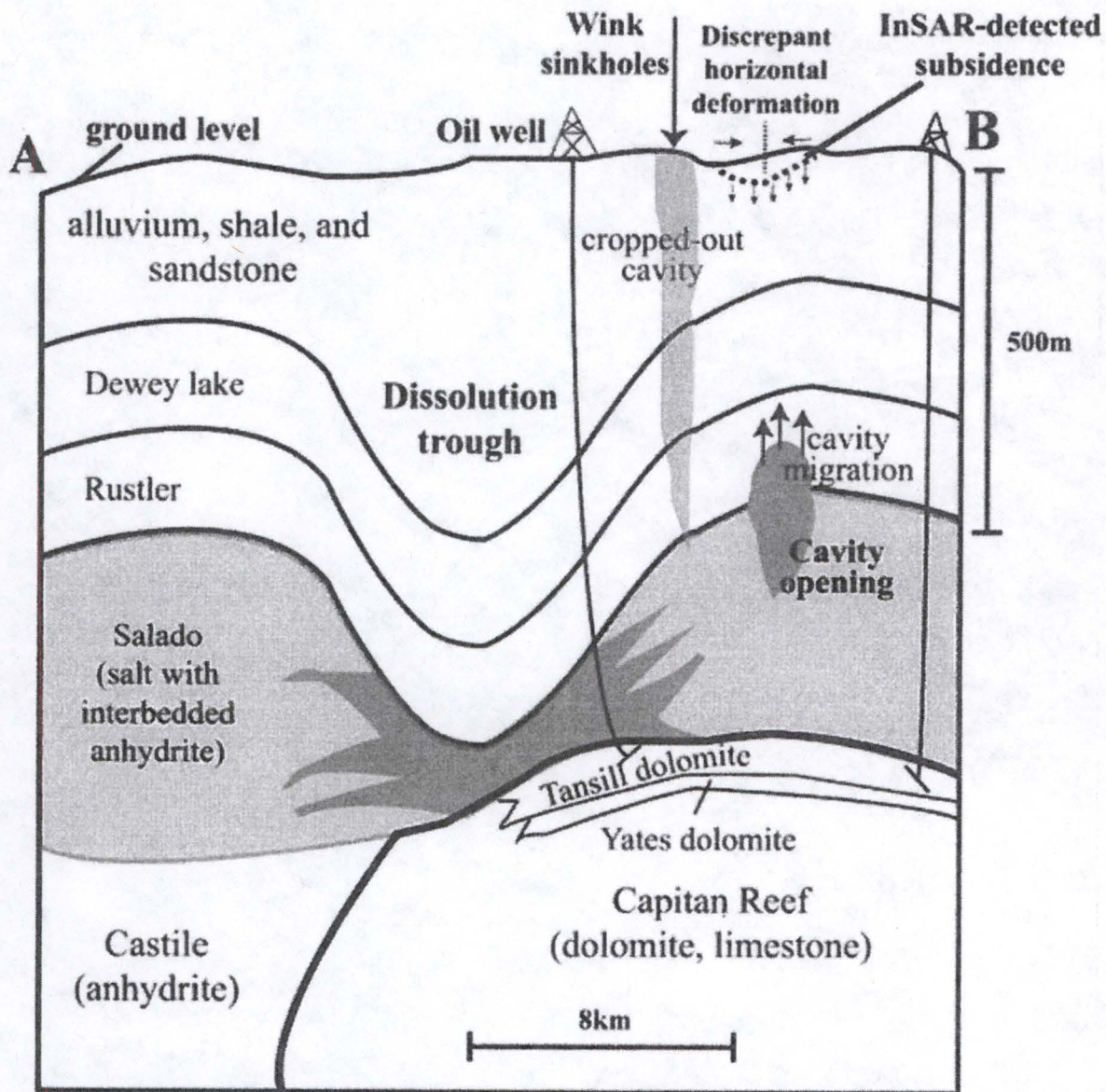
Caverly (JSC1)


COMMENT (168)

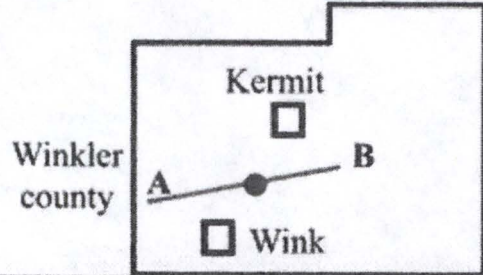
PUBLICATION DATE:

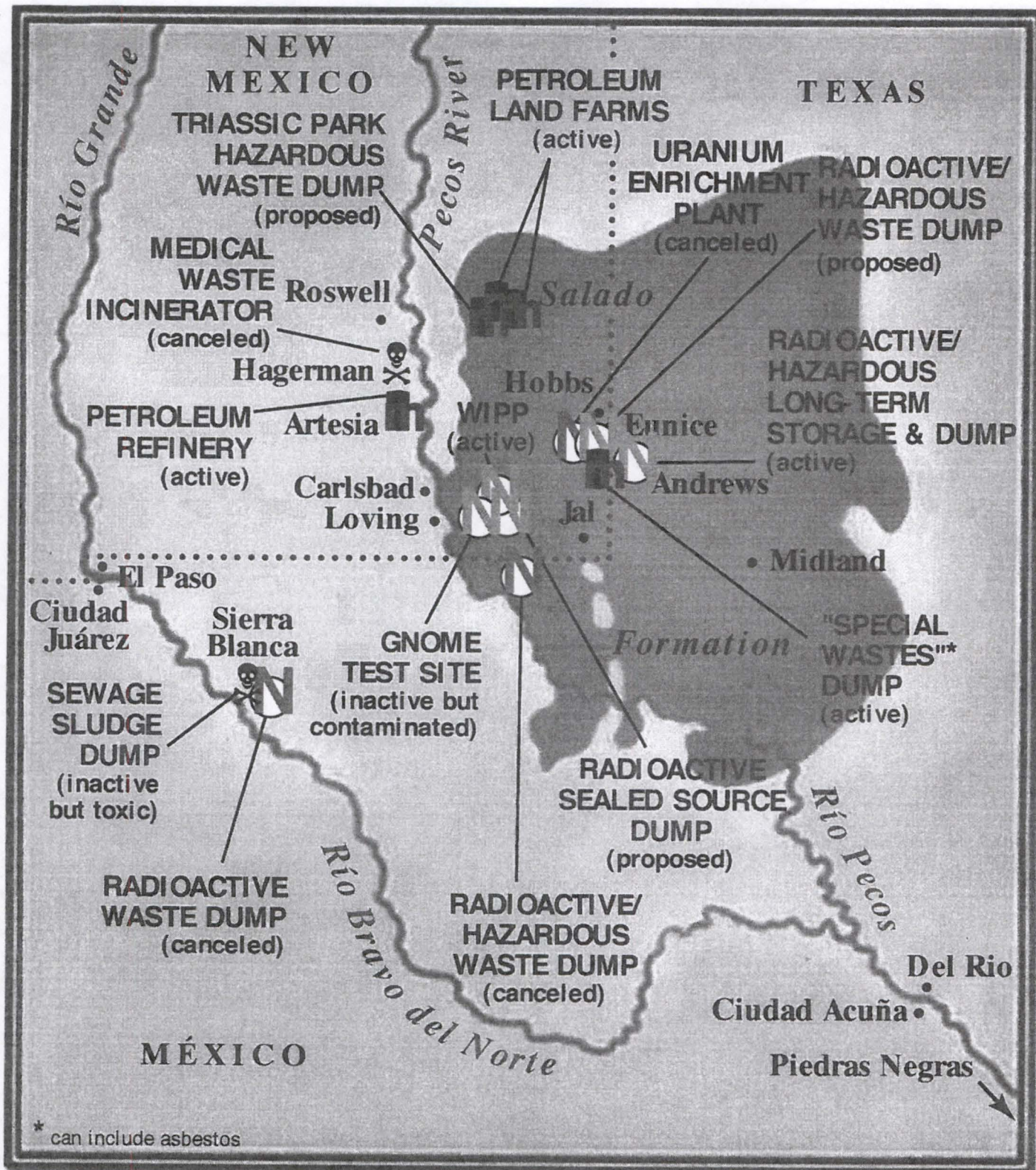
3/30/2018

CITATION # 83 FR 13802



 Zone where salt is dissolved.





Locator map showing some of the many toxic and/or radioactive dumps and projects proposed or existing in this "National Sacrifice Area" of the United States. Almost all of these projects bring wastes from out of state to an area with a fragile desert ecology, large numbers of Hispanics and Mexicans, and many people with low incomes. The sludge dump in Sierra Blanca, Texas received sewage from New York City until NYC canceled their contract in June of 2001; transuranic waste is brought from DOE sites all around the country to WIPP; a national hazardous waste dump is in the permitting process near Roswell, New Mexico; and DOE wants to bring more radioactive and hazardous waste from their Savannah River Site to Eunice, New Mexico. ("Special Wastes" which can contain asbestos are already being dumped near Eunice.) The Gnome Project which is right across Route 128 from WIPP was an experimental, underground nuclear detonation which left contamination that is still present.