

DISTRIBUTION AFTER ISSUANCE OF OPERATING LICENSE

NRC FORM 195  
(2-78)

U.S. NUCLEAR REGULATORY COMMISSION

DOCKET NUMBER

50-244

NRC DISTRIBUTION FOR PART 50 DOCKET MATERIAL

FILE NUMBER

TO: Mr. Boyce H. Grier

FROM: RG&E  
Rochester, N.Y. 14649  
Leon D. White, Jr.

DATE OF DOCUMENT

11/30/77

DATE RECEIVED

12/07/77

LETTER  
 ORIGINAL  
 COPY

NOTORIZED  
 UNCLASSIFIED

PROP

INPUT FORM

NUMBER OF COPIES RECEIVED

100

DESCRIPTION Furnishing response to IE Bulletins ENCLOSURE

77-05 & 77-05A dtd 11/08/77 & 11/15/77...  
Advising that RG&E does not or plan to use  
electrical connector assemblies for safety-  
related circuits at the Ginna Nuc Plant...

1p

PLANT NAME: R. E. GINNA UNIT # 1  
jcm 12/07/77

SAFETY FOR ACTION/INFORMATION

BRANCH CHIEF: (7) SCHWENGER

INTERNAL DISTRIBUTION

- REG FILE
- NRC PDR
- T & E (2)
- OELD
- HANAUER
- CHECK
- EISENHUT
- SHAO
- BAER
- BITTLER
- CRIMES
- U. COLLINS
- U. MCGOUGH

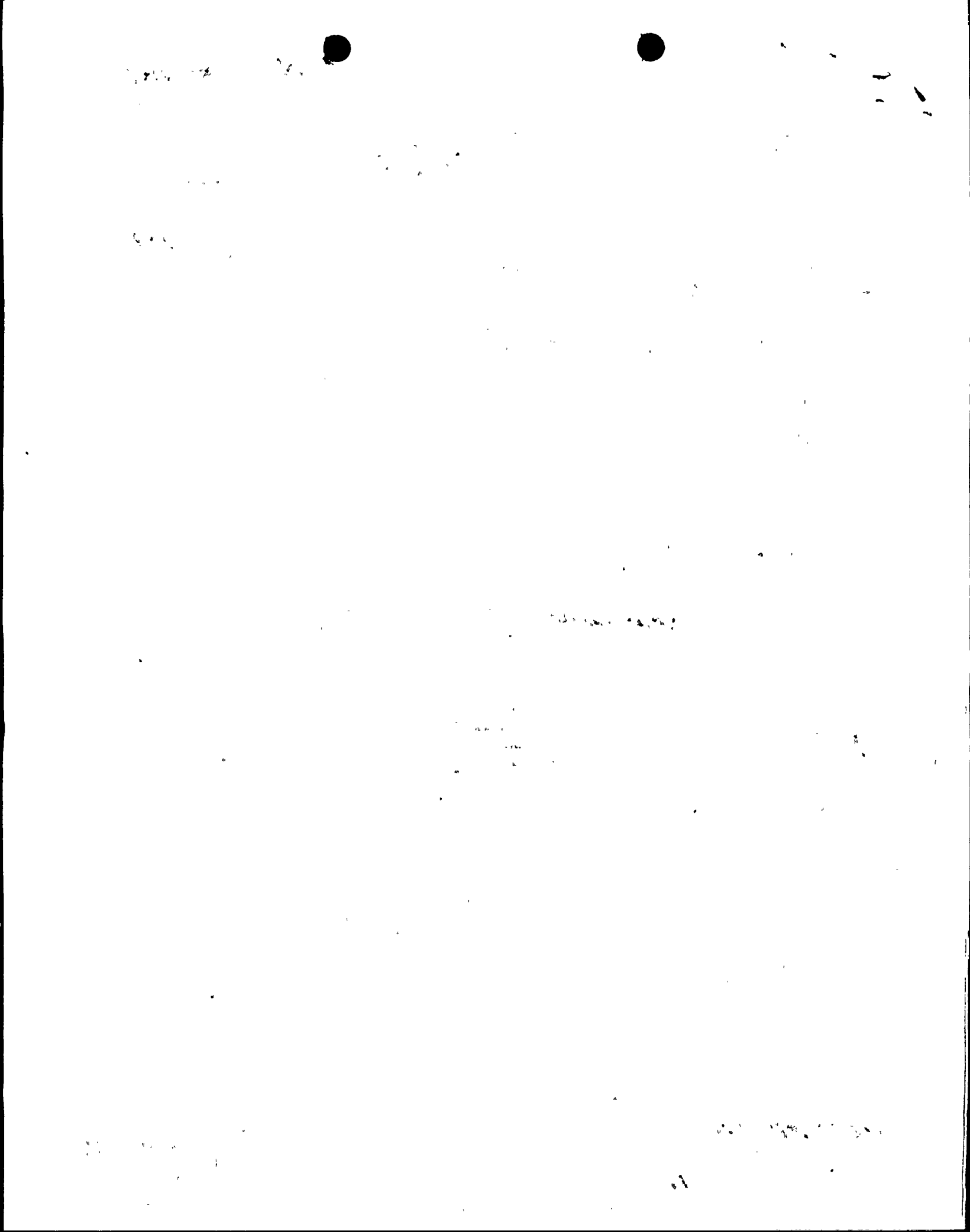
EXTERNAL DISTRIBUTION

LPDR: ROCHESTER N.Y.  
TEC  
NSIC  
ACRS 16 CYS SENT CATEGORY B

CONTROL NUMBER

A02

773410114



REGULATORY DOCKET FILE COPY

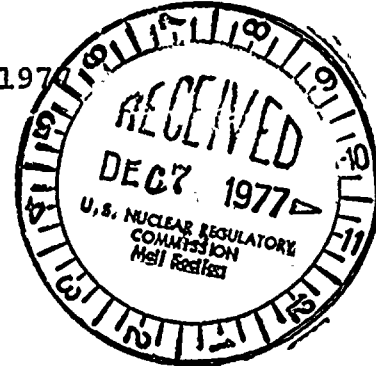


ROCHESTER GAS AND ELECTRIC CORPORATION • 89 EAST AVENUE, ROCHESTER, N.Y. 14649

LEON D. WHITE, JR.  
VICE PRESIDENT

TELEPHONE  
AREA CODE 716 546-2700

November 30, 1977



Mr. Boyce H. Grier, Director  
U.S. Nuclear Regulatory Commission  
Office of Inspection and Enforcement  
Region I  
631 Park Avenue  
King of Prussia, Pennsylvania 19406

Subject: IE Bulletin No. 77-05, Electrical Connector Assemblies  
IE Bulletin No. 77-05A, (Supplement to IE Bulletin  
No. 77-05)  
R.E. Ginna Nuclear Power Plant, Unit No. 1  
Docket No. 50-244

Dear Mr. Grier:

In response to Inspection and Enforcement Bulletin 77-05, dated November 8, 1977, and IE Bulletin No. 77-05A, dated November 15, 1977, concerning electrical connector assemblies, we have reviewed all electrical cable connector assembly use in the Ginna Nuclear Plant Electrical Systems. We have determined that RG&E does not now use or plan to use electrical connector assemblies for safety-related circuits at the Ginna Nuclear Plant. Rather, Ginna uses splice boxes and terminal strips to interconnect safety related electrical circuits. Thus, the statement on page 3 of a letter dated November 23, 1977 on our behalf from LeBoeuf, Lamb, Leiby, and MacRae which implies that Ginna does employ connectors in safety-related circuits, is incorrect.

Very truly yours,

*L. White, Jr.*  
Leon D. White, Jr.

LDW:ss

cc: U.S. Nuclear Regulatory Commission  
Office of Inspection and Enforcement  
Division of Reactor Construction Inspection  
Washington, D.C. 20555

773410114

RECEIVED DOCUMENT  
PROCESSING UNIT

1977 DEC 6 PM 2 11

