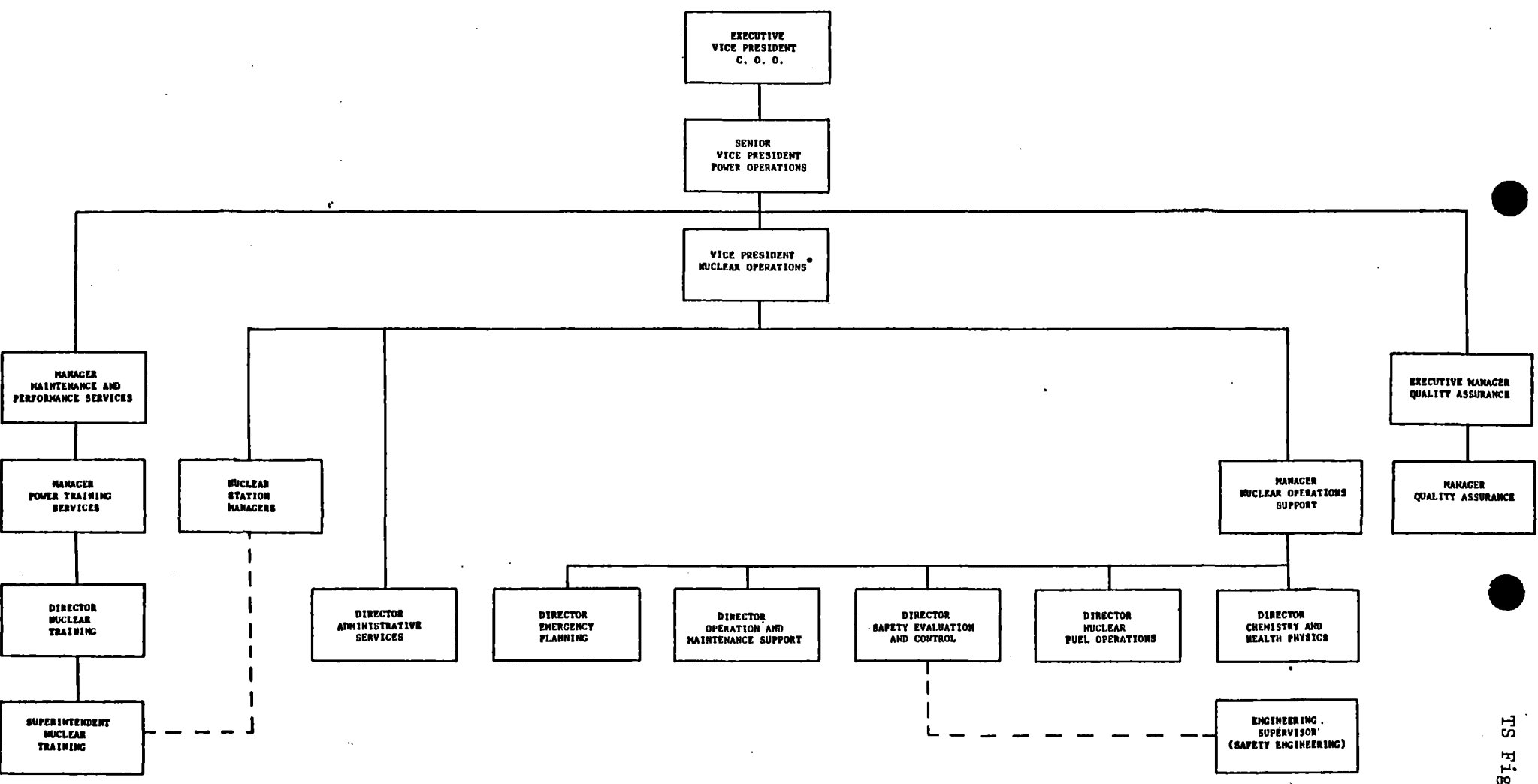


ATTACHMENT 1

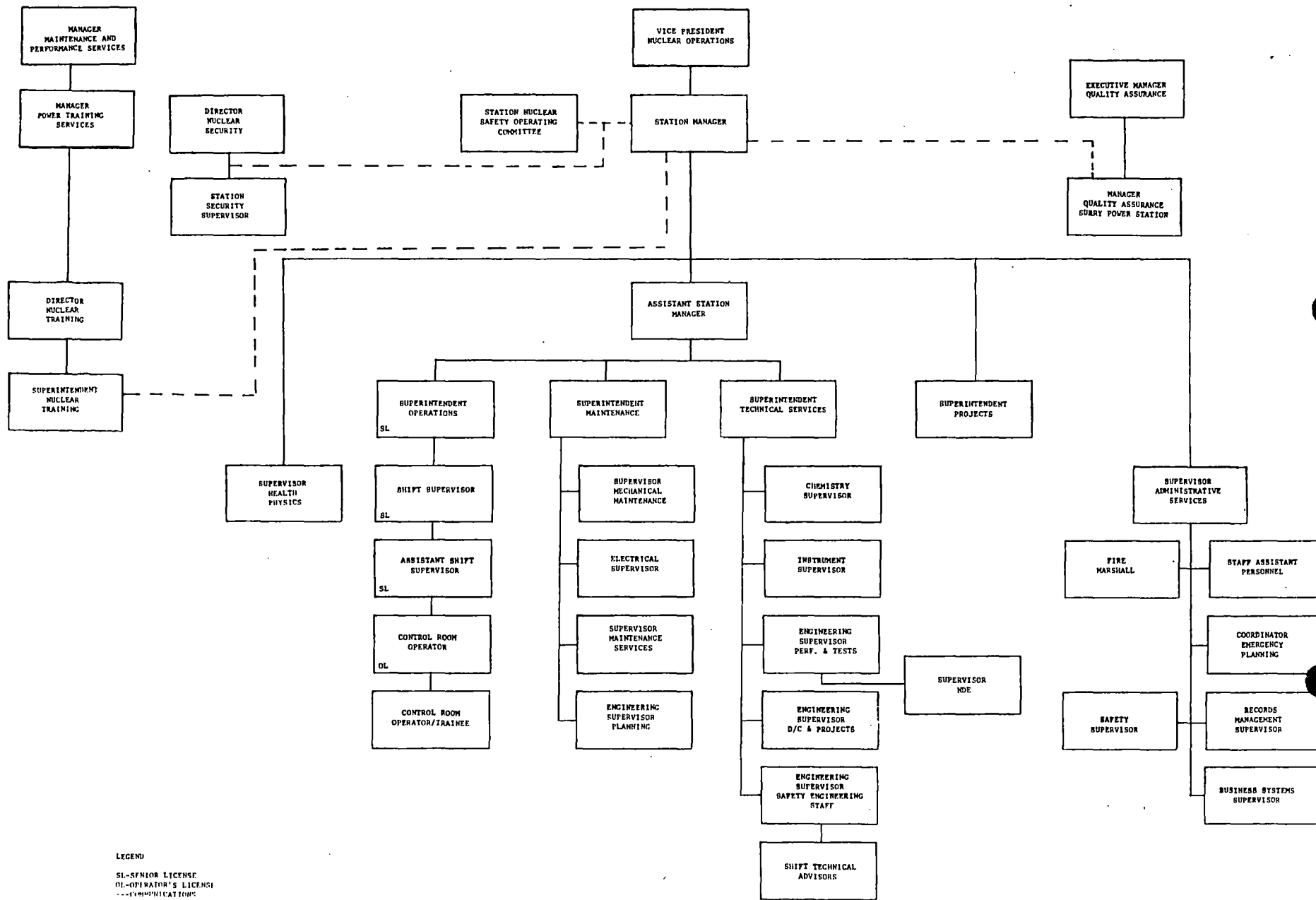
PROPOSED TECHNICAL SPECIFICATION CHANGE

8311010122 831027  
PDR ADOCK 05000280  
P PDR



\* RESPONSIBLE FOR CORPORATE FIRE PROTECTION PROGRAM

OFFSITE ORGANIZATION FOR  
FACILITY MANAGEMENT AND TECHNICAL SUPPORT



LEGEND  
 SL-SENIOR LICENSE  
 DL-OPERATOR'S LICENSE  
 -.-COMMUNICATIONS

SURRY POWER STATION  
 ORGANIZATION CHART

ATTACHMENT 2

DISCUSSION OF PROPOSED TECHNICAL SPECIFICATION CHANGE

## DISCUSSION OF PROPOSED TECHNICAL SPECIFICATION CHANGE

The proposed Technical Specification changes reflect the recent reorganizations within the Nuclear Operations Department and Maintenance and Performance Services Department.

The reorganization within the Nuclear Operations Department and the Maintenance and Performance Services Department will aid in the quality of training activities at the power stations. The Director Training within the Nuclear Operations Department will now be the Director Nuclear Training in the Maintenance and Performance Services Department. The Director Nuclear Training will report to the Manager Power Training Services who will report to the Manager Maintenance and Performance Services who will ultimately report to the Senior Vice President Power Operations. The Director Nuclear Training will have the Superintendent Nuclear Training (who is located at the power station) reporting directly to him. The Superintendent Nuclear Training will have communications with the Station Manager.

The Director Nuclear Training will continue to plan, organize, direct and control nuclear training, so that effective and efficient technical training is provided to Nuclear Operations. The Director Nuclear Training will assess and recommend specific training requirements for regulatory agencies as applicable and coordinate programs offerings as necessary.

These proposed changes are administrative in nature and do not pose a significant hazards consideration because they in no way involve a significant reduction in the safe operation of the plant.