

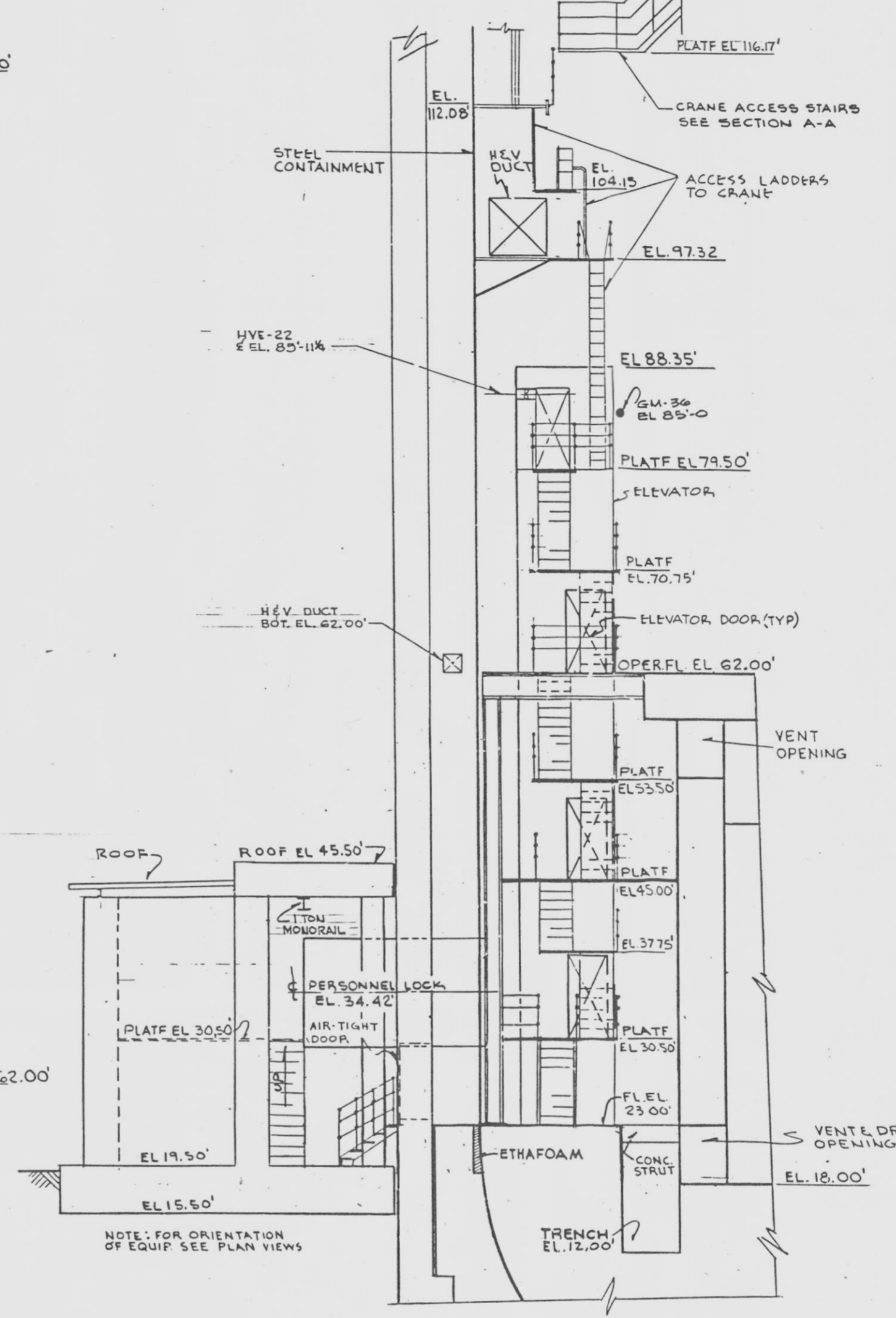
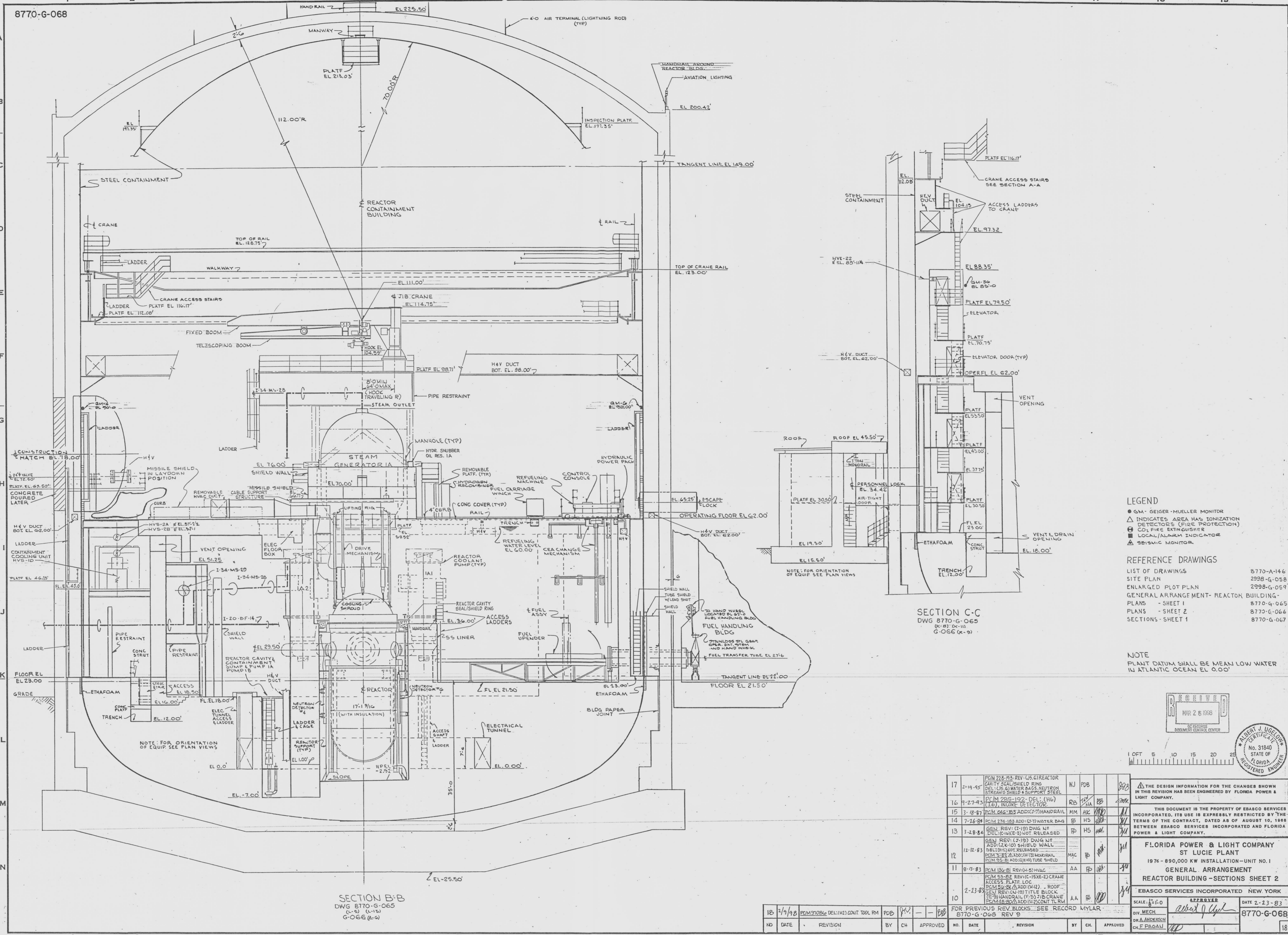
8770-G-068

DRAWING NUMBER  
8770-G-068

DRAWING NUMBER  
8770-G-068

DRAWING NUMBER  
8770-G-068

3 NUMBER

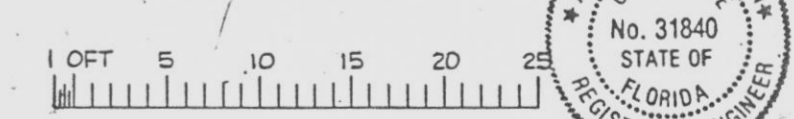
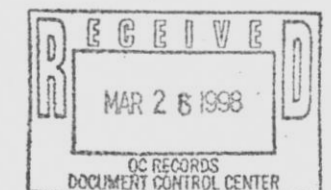


SECTION C-C  
DWG 8770-G-065  
(K-8) (K-11)  
G-066 (K-9)

- LEGEND**
- GM - GEIGER-MUELLER MONITOR
  - △ INDICATES AREA HAS IONIZATION DETECTORS (FIRE PROTECTION)
  - ⊠ CO2 FIRE EXTINGUISHER
  - LOCAL ALARM INDICATOR
  - ▲ SEISMIC MONITOR

- REFERENCE DRAWINGS**
- |  |            |
|--|------------|
| LIST OF DRAWINGS   | 8770-A-146 |
| SITE PLAN  | 2988-G-058 |
| ENLARGED PLOT PLAN                                       | 2988-G-059 |
| GENERAL ARRANGEMENT - REACTOR BUILDING - PLANS - SHEET 1 | 8770-G-065 |
| PLANS - SHEET 2  | 8770-G-066 |
| SECTIONS - SHEET 1                                       | 8770-G-067 |

**NOTE**  
PLANT DATUM SHALL BE MEAN LOW WATER IN ATLANTIC OCEAN EL 0.00'



NO	DATE	REVISION	BY	CH	APPROVED	NO.	DATE	REVISION	BY	CH	APPROVED
17	2-19-65	PCM 226-193 REV (U5) REACTOR CAVITY SEAL SHIELD RING DEL (U5) WATER BARS NEUTRON STREAMS SHIELD & SUPPORT STEEL (L-1) INCREASE DETECTOR	WJ	PDB							
16	7-27-63	PCM 226-192 DEL (H16)	RB	WJA							
15	3-18-67	PCM 046-283 ADD (J-7) HANDRAIL	MM	HK							
14	7-26-64	PCM 274-183 ADD (G-7) WATER BAG	FP	HS							
13	3-28-64	GEN REV (I-10) DWG W/ DEL (K-1)(E-3) NOT RELEASED	FP	HS							
12	12-12-63	GEN REV (7-15) DWG W/ ADD (K-1)(D) SHIELD WALL DEL (D-1) NOT RELEASED PCM 3-81 ADD (H-1) MONORAIL PCM 136-81 ADD (K-1)(D) TUBE SHIELD	MAC	FP							
11	8-9-63	PCM 136-81 REV (H-5) HVAC	AA	FP							
10	2-23-63	PCM 53-82 REV (C-15)(E-2) CRANE ACCESS PLATE LOC PCM 53-81 ADD (H-12) - ROOF GEN REV (N-19) TITLE BLOCK (E-3) HANDRAIL (F-5) JIB CRANE (M-48,80) ADD (H-2) CONT TL RM	AA	FP							

THE DESIGN INFORMATION FOR THE CHANGES SHOWN IN THIS REVISION HAS BEEN ENGINEERED BY FLORIDA POWER & LIGHT COMPANY.

THIS DOCUMENT IS THE PROPERTY OF EBASCO SERVICES INCORPORATED. ITS USE IS EXPRESSLY RESTRICTED BY THE TERMS OF THE CONTRACT, DATED AS OF AUGUST 10, 1966 BETWEEN EBASCO SERVICES INCORPORATED AND FLORIDA POWER & LIGHT COMPANY.

**FLORIDA POWER & LIGHT COMPANY**  
ST LUCIE PLANT  
1976 - 890,000 KW INSTALLATION - UNIT NO. 1  
GENERAL ARRANGEMENT  
REACTOR BUILDING - SECTIONS SHEET 2

EBASCO SERVICES INCORPORATED NEW YORK

SCALE: 1/4" = 1'-0"

APPROVER: *[Signature]* DATE: 2-23-83

DIV. MECH. CH. F. ANDERSON  
CH. F. PAGANI

8770-G-068

SECTION B-B  
DWG 8770-G-065  
(L-6) (L-15)  
G-066 (L-6)

NO	DATE	REVISION	BY	CH	APPROVED
18	2/1/98	PCM 53086 DEL (H-2) CONT TOOL RM	PDB	WJ	

FOR PREVIOUS REV BLOCKS SEE RECORD MYLAR  
8770-G-068 REV 9

E