

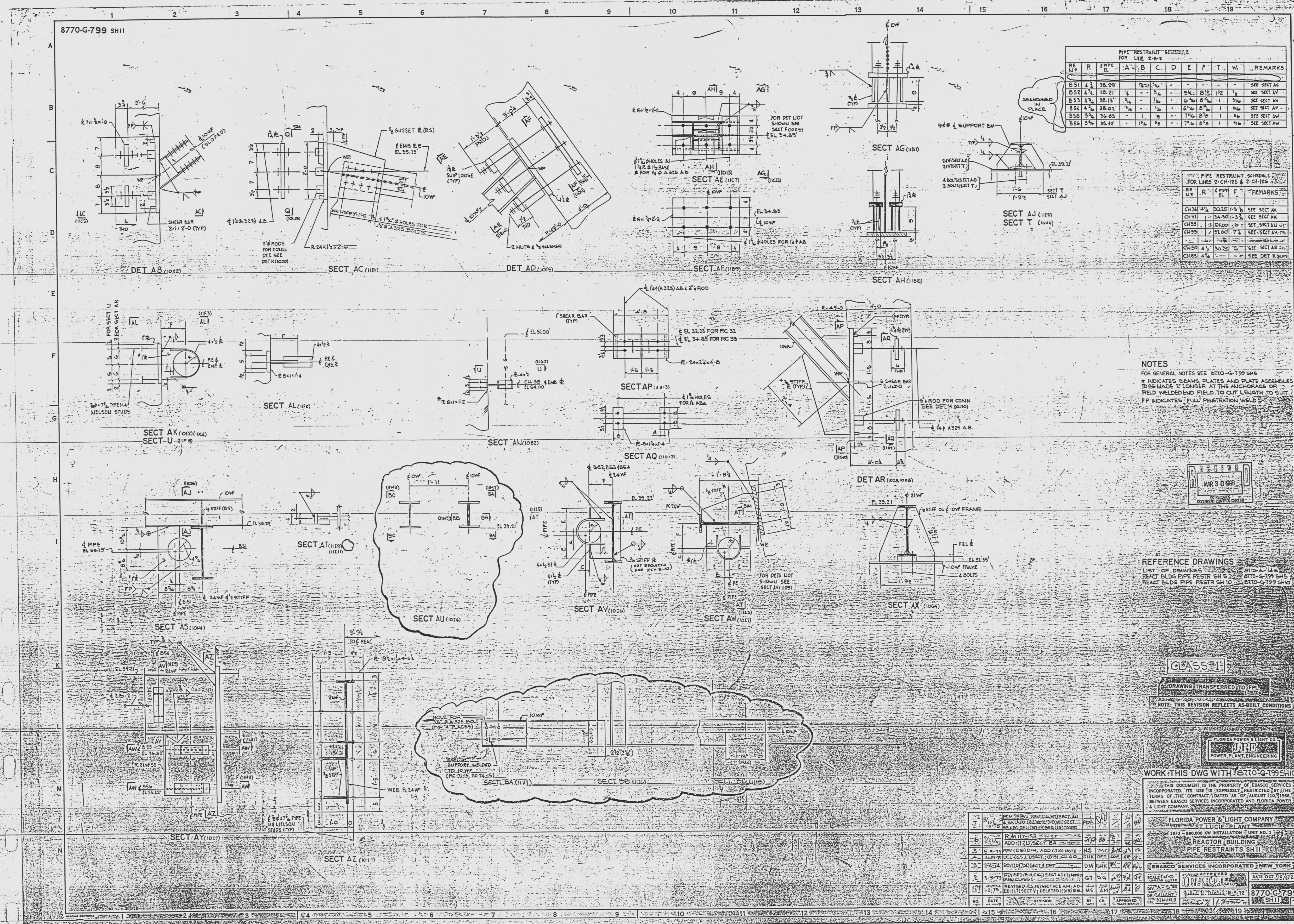
8770-G-799 SH.11

DRAWING NUMBER
8770-G-799

DRAWING NUMBER
8770-G-799

DRAWING NUMBER

DRAWING NUMBER



PIPE RESTRAINT SCHEDULE FOR LINE 2-B-2

RE	R	APPL.	A	B	C	D	E	F	T	W	REMARKS
B51	4	38.29									SEE SECT AS
B52	4	38.21									SEE SECT AV
B53	4	38.13									SEE SECT AV
B54	4	38.05									SEE SECT AV
B55	4	37.97									SEE SECT AV
B56	4	37.89									SEE SECT AV
B57	4	37.81									SEE SECT AV
B58	4	37.73									SEE SECT AV
B59	4	37.65									SEE SECT AV
B60	4	37.57									SEE SECT AV

PIPE RESTRAINT SCHEDULE FOR LINE 2-C-12

RE	R	APPL.	A	B	C	D	E	F	T	W	REMARKS
CH34	4	30.25									SEE SECT AK
CH37	4	30.17									SEE SECT AK
CH38	4	30.09									SEE SECT AK
CH39	4	30.01									SEE SECT AK
CH40	4	29.93									SEE SECT AK
CH41	4	29.85									SEE SECT AK
CH42	4	29.77									SEE SECT AK
CH43	4	29.69									SEE SECT AK
CH44	4	29.61									SEE SECT AK
CH45	4	29.53									SEE SECT AK
CH46	4	29.45									SEE SECT AK
CH47	4	29.37									SEE SECT AK
CH48	4	29.29									SEE SECT AK
CH49	4	29.21									SEE SECT AK
CH50	4	29.13									SEE SECT AK

NOTES
 FOR GENERAL NOTES SEE 8770-G-799 SH.10
 * INDICATES BEAMS, PLATES AND PLATE ASSEMBLIES TO BE WELDED TO CORNER AT THE ANCHORAGE OR FIELD WELDED END FIELD TO CUT LENGTH TO GUT. ** INDICATES FULL PENETRATION WELD.

REFERENCE DRAWINGS
 REACT BLDG PIPE RESTR SH 5 8770-G-799 SH.10
 REACT BLDG PIPE RESTR SH 10 8770-G-799 SH.11

CLASS 1

FORWARDING TRANSFERRED TO THE
 REACTOR BUILDING
 NOTE: THIS REVISION REFLECTS AS-BUILT CONDITIONS

FLORIDA POWER & LIGHT COMPANY
 JRB
 POWER PLANT ENGINEERING

WORK THIS DWG WITH 8770-G-799 SH.10

REVISIONS

NO.	DATE	REVISION	BY	CHKD.	APP'D.
1	12-17-78	REVISED (BA) SECT A AT 4TH FLOOR FROM CLASS 1 TO CLASS 2	MS	AM	MS
2	12-17-78	REVISED (BA) SECT A AT 4TH FLOOR FROM CLASS 2 TO CLASS 1	MS	AM	MS
3	12-17-78	REVISED (BA) SECT A AT 4TH FLOOR FROM CLASS 1 TO CLASS 2	MS	AM	MS
4	12-17-78	REVISED (BA) SECT A AT 4TH FLOOR FROM CLASS 2 TO CLASS 1	MS	AM	MS
5	12-17-78	REVISED (BA) SECT A AT 4TH FLOOR FROM CLASS 1 TO CLASS 2	MS	AM	MS
6	12-17-78	REVISED (BA) SECT A AT 4TH FLOOR FROM CLASS 2 TO CLASS 1	MS	AM	MS
7	12-17-78	REVISED (BA) SECT A AT 4TH FLOOR FROM CLASS 1 TO CLASS 2	MS	AM	MS
8	12-17-78	REVISED (BA) SECT A AT 4TH FLOOR FROM CLASS 2 TO CLASS 1	MS	AM	MS
9	12-17-78	REVISED (BA) SECT A AT 4TH FLOOR FROM CLASS 1 TO CLASS 2	MS	AM	MS
10	12-17-78	REVISED (BA) SECT A AT 4TH FLOOR FROM CLASS 2 TO CLASS 1	MS	AM	MS
11	12-17-78	REVISED (BA) SECT A AT 4TH FLOOR FROM CLASS 1 TO CLASS 2	MS	AM	MS
12	12-17-78	REVISED (BA) SECT A AT 4TH FLOOR FROM CLASS 2 TO CLASS 1	MS	AM	MS
13	12-17-78	REVISED (BA) SECT A AT 4TH FLOOR FROM CLASS 1 TO CLASS 2	MS	AM	MS
14	12-17-78	REVISED (BA) SECT A AT 4TH FLOOR FROM CLASS 2 TO CLASS 1	MS	AM	MS
15	12-17-78	REVISED (BA) SECT A AT 4TH FLOOR FROM CLASS 1 TO CLASS 2	MS	AM	MS
16	12-17-78	REVISED (BA) SECT A AT 4TH FLOOR FROM CLASS 2 TO CLASS 1	MS	AM	MS
17	12-17-78	REVISED (BA) SECT A AT 4TH FLOOR FROM CLASS 1 TO CLASS 2	MS	AM	MS
18	12-17-78	REVISED (BA) SECT A AT 4TH FLOOR FROM CLASS 2 TO CLASS 1	MS	AM	MS
19	12-17-78	REVISED (BA) SECT A AT 4TH FLOOR FROM CLASS 1 TO CLASS 2	MS	AM	MS
20	12-17-78	REVISED (BA) SECT A AT 4TH FLOOR FROM CLASS 2 TO CLASS 1	MS	AM	MS

E