

DRAWING NUMBER
8770-G-424

DRAWING NUMBER
302

MBER

- NOTES**
- FOR GENERAL NOTES AND SYMBOLS SEE DWG 8770-G-424 501.
 - FOR DETECTORS BELOW CEILING (EL. 28'-8") SEE DWG 8770-G-424 504.
 - CONDUIT WRAPPED UP TO EL. 4'-0" (CEILING).
 - CONDUIT WRAPPED DOWN TO EL. 19.5' (FLOOR).
 - CONTRACTOR BOX WRAPPED WITH 3/4" H.R. THREADED ROD.
 - A.C. POWER SOURCE RECEPTACLE FOR APPENDIX "R" EMERGENCY BATTERY PACK LIGHTING UNITS SEE 8770-G-397 54.2.

EMERGENCY LIGHTING TABULATION

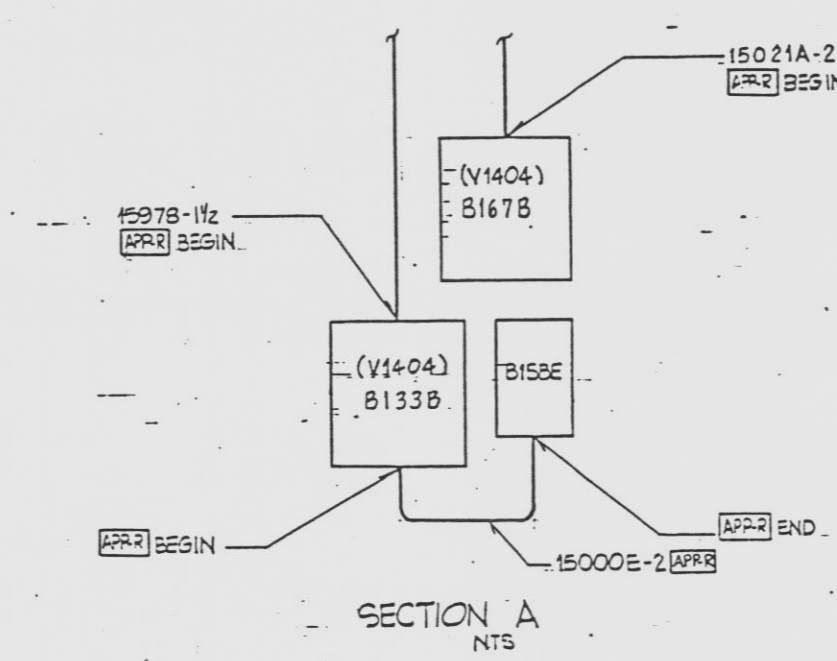
APPENDIX "R" TAG NO.	LOCATION	AREA ILLUMINATED
EL-1-47-001	RAB/19.5/RAB/RAJ	ACCESS/HOUSE AT 4107 SWR LAB AND 4807 L.C. LAB COMMON AREA
EL-1-47-002	RAB/19.5/RAB/RAJ	ACCESS/HOUSE AT LAB SWR ROOM POWER END
EL-1-47-003	RAB/19.5/RAB/RAJ	ACCESS/HOUSE AT LAB SWR ROOM POWER END
EL-1-47-004	RAB/19.5/RAB/RAJ	ACCESS/HOUSE AT VOLCANO CONTROL TOWER
EL-1-55-001	RAB/19.5/RAB/RAJ	ACCESS/HOUSE AT EAST-WEST PARALLEL (EAST)
EL-1-55-002	RAB/19.5/RAB/RAJ	ACCESS/HOUSE AT EAST-WEST PARALLEL (WEST)
EL-1-55-003	RAB/19.5/RAB/RAJ	ACCESS/HOUSE AT EAST-WEST PARALLEL (EAST)
EL-1-55-004	RAB/19.5/RAB/RAJ	ACCESS/HOUSE AT EAST-WEST PARALLEL (WEST)
EL-1-55-005	RAB/19.5/RAB/RAJ	ACCESS/HOUSE AT NORTH-SOUTH PARALLEL (N)
EL-1-55-006	RAB/19.5/RAB/RAJ	ACCESS/HOUSE AT NORTH-SOUTH PARALLEL (S)
EL-1-43-001	RAB/19.5/RAB/RAJ	ACCESS/HOUSE AT WEST STEELWALK
EL-1-77-001	RAB/19.5/RAB/RAJ	ACCESS/EGRESS, Y1404 REMOTE CONT
EL-1-78-001	RAB/19.5/RAB/RAJ	ACCESS/EGRESS, Y1404 REMOTE CONT

WRAPPED CONDUIT TABLE

FIRE AREA	FIRE ZONE	CONDUIT NUMBER	CONDUIT COORDINATES	PROTECTED ESSENTIAL CABLES CONTAINED?
C	55W	15021A-2	EP THRU JG	
		11009G-112	D3 THRU D5	
		11009G-112	D4	
		11009G-112	D3 THRU D4	
		11001F-3	E5 THRU E6	
		11001H-3		
C	78	15021A-2	D5 THRU E5	
		11001F-3	D5 THRU E5	
		11001H-3		
		15078-112	C5 THRU D5	
		15000E-2	N4	

WRAPPED CONDUIT TABLE

FIRE AREA	FIRE ZONE	CONDUIT NUMBER	CONDUIT COORDINATES	PROTECTED ESSENTIAL CABLES CONTAINED?
A	44A	11001F-3 (SA)	EG	
		11001H-3 (SA)		
		15077-112	C5 THRU D7	10117B



PLAN EL. 19.50'

THE DESIGN INFORMATION FOR THE CHANGES SHOWN IN THIS REVISION HAS BEEN ENGINEERED BY FLORIDA POWER & LIGHT COMPANY.

REVISIONS

NO.	DATE	REVISION	BY	CR	APPROVED
9	03-24-81	REVISED: FIRE ZONE (C6) PER 91061	RAC	DG	[Signature]
8	03-24-81	REVISED: SECTION 15021A-2, 15078-112, 15000E-2 PER 91061	RAC	DG	[Signature]
7	11-7-79	REVISED: DETECTOR NUMBERS (DS, RH) PER PCM 054-154	RAC	DG	[Signature]
6	11-5-79	REVISED: DETECTOR NUMBERS (DS, RH) PER PCM 054-154	RAC	DG	[Signature]
5	12-7-77	ADDED: (1) FIRE ZONE (A6) (IND) NOTE: PER PCM 054-154	SD	DG	[Signature]
4	11-11-77	ADDED: EMERG BATTERY PACK (E3) PER PCM 050-105	RAC	DG	[Signature]
3	3-20-76	ADDED: EMERG BATTERY PACK (E3) PER PCM 050-105	RAC	DG	[Signature]
11	11/1/70	ADDED: EMERG BATTERY PACK (E3) PER PCM 050-105	RAC	DG	[Signature]
10	4/10/69	ADDED: EMERG BATTERY PACK (E3) PER PCM 050-105	RAC	DG	[Signature]

APPROVED

SCALE: 1/4" = 1'-0"

DIV. ELEC.

DATE: 11/1/70

8770-G-424 502

E