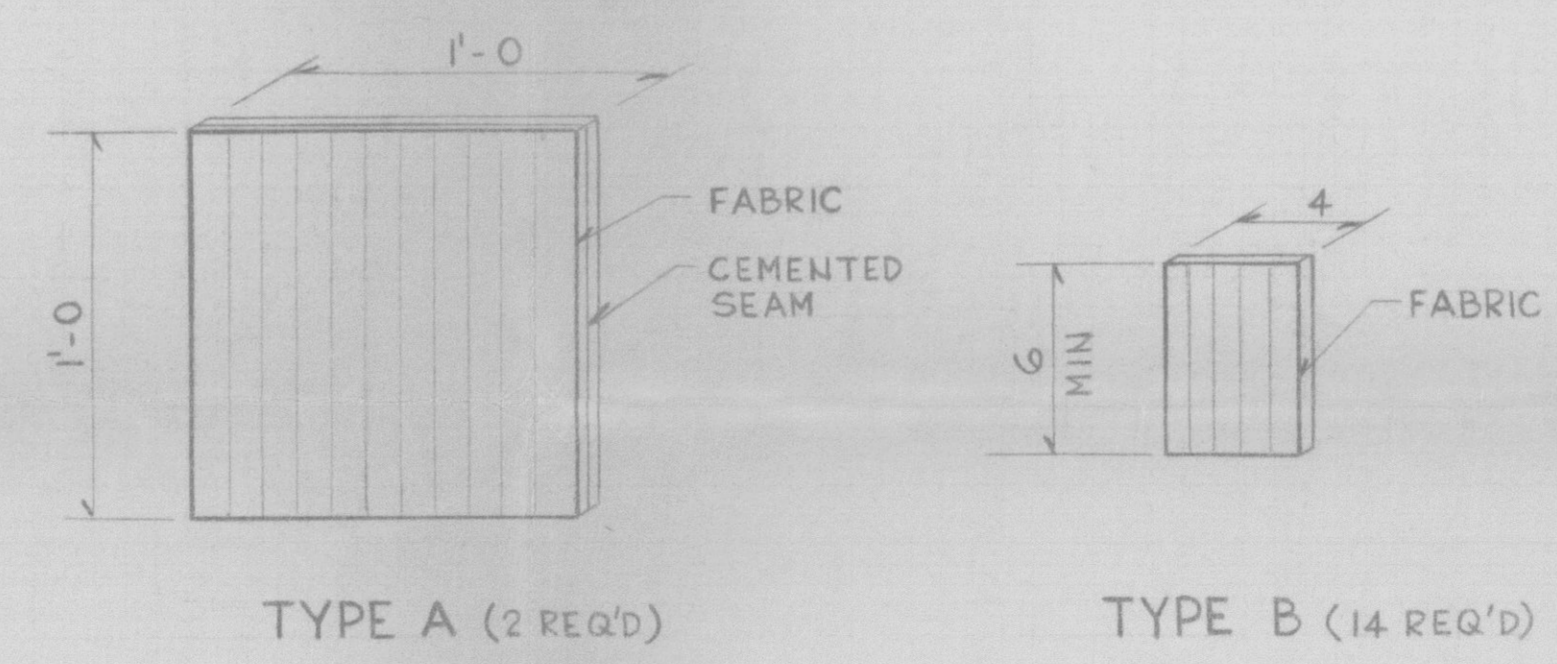
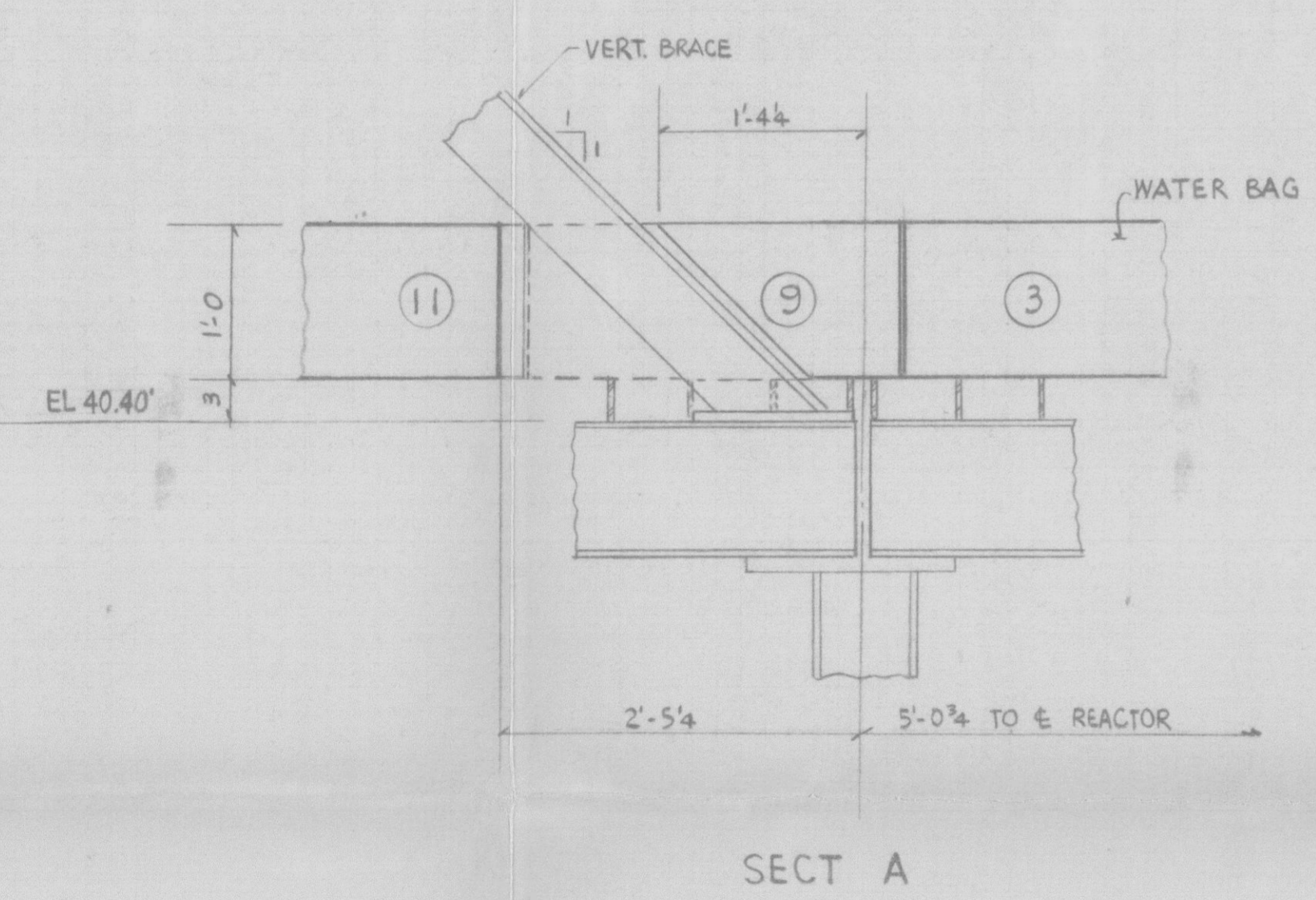
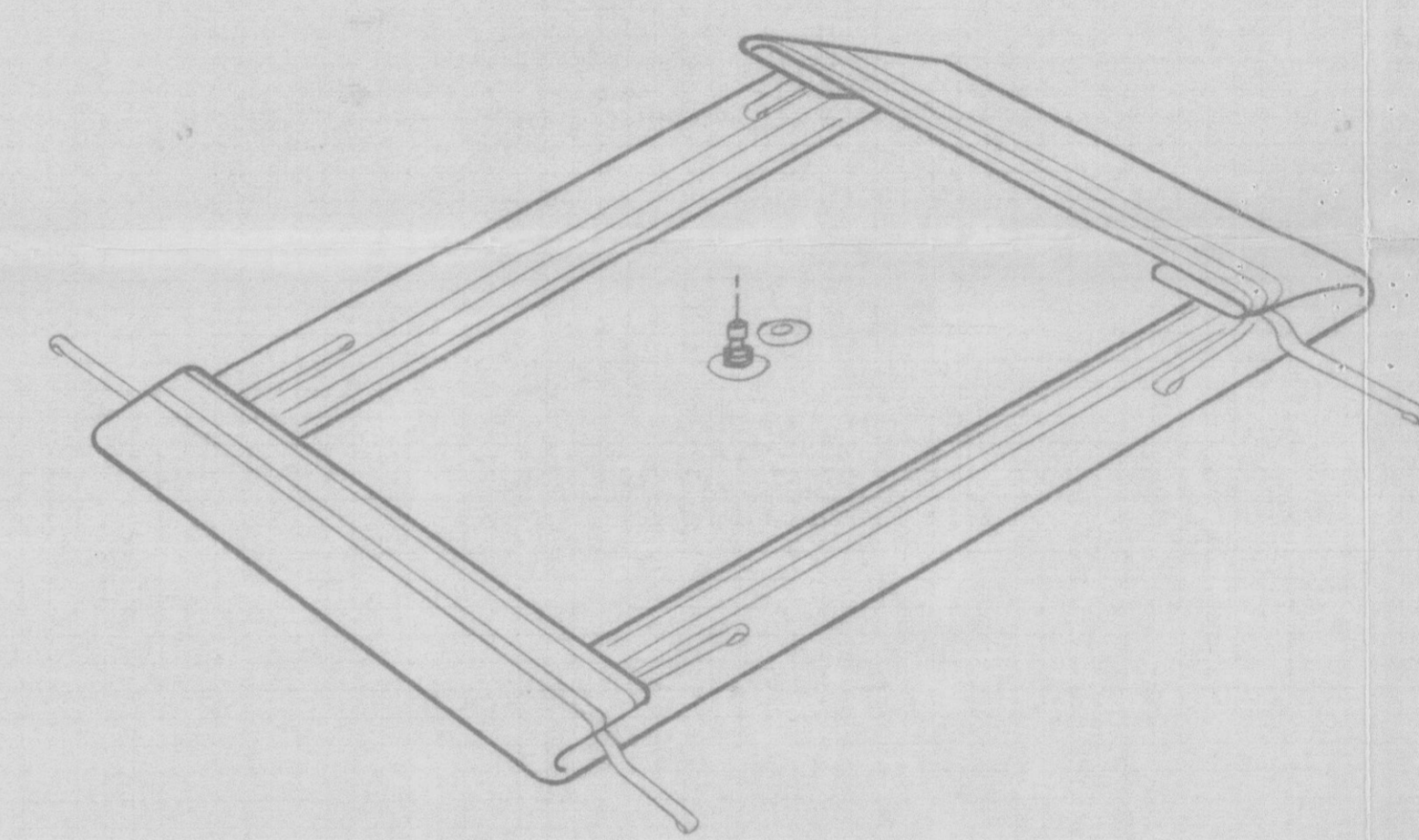
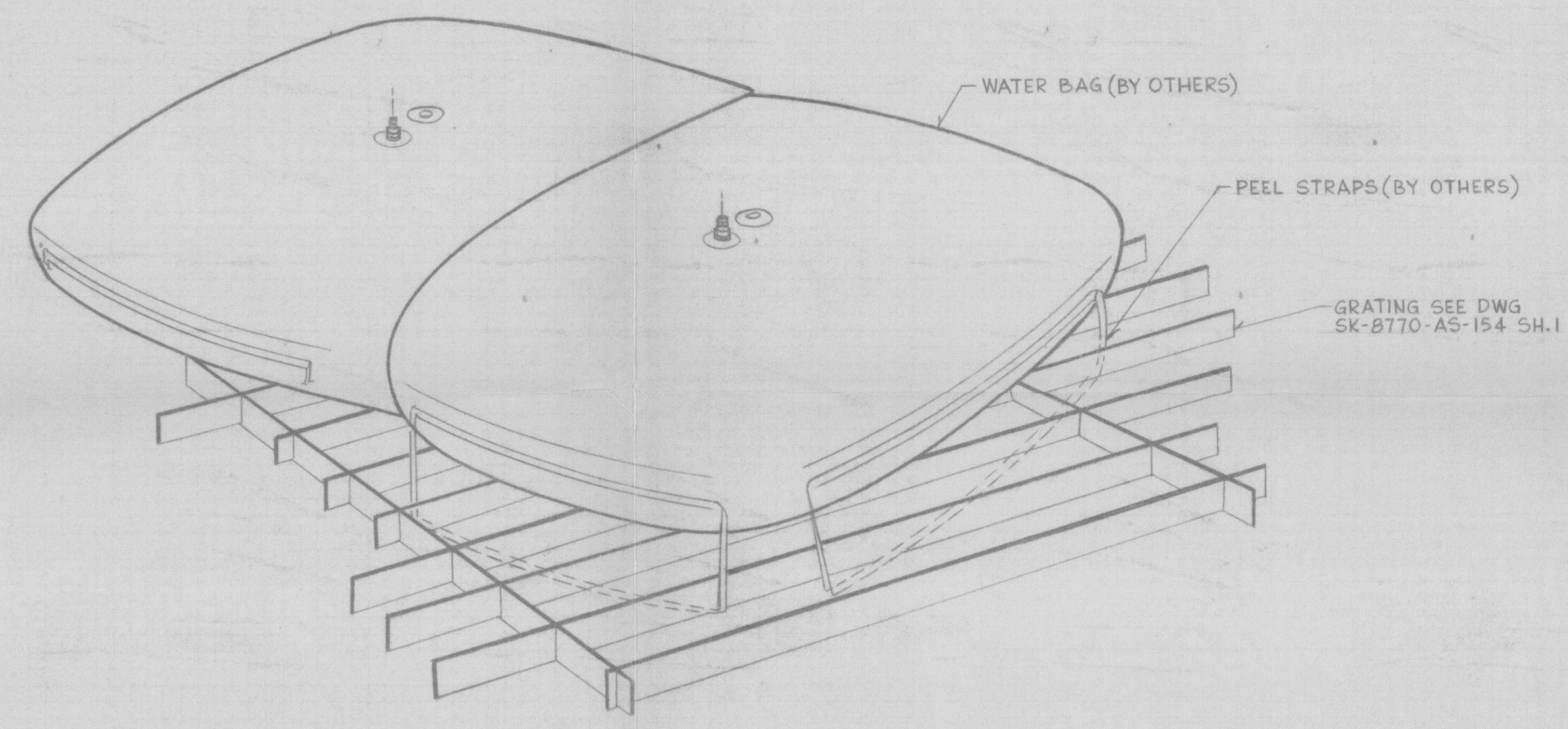
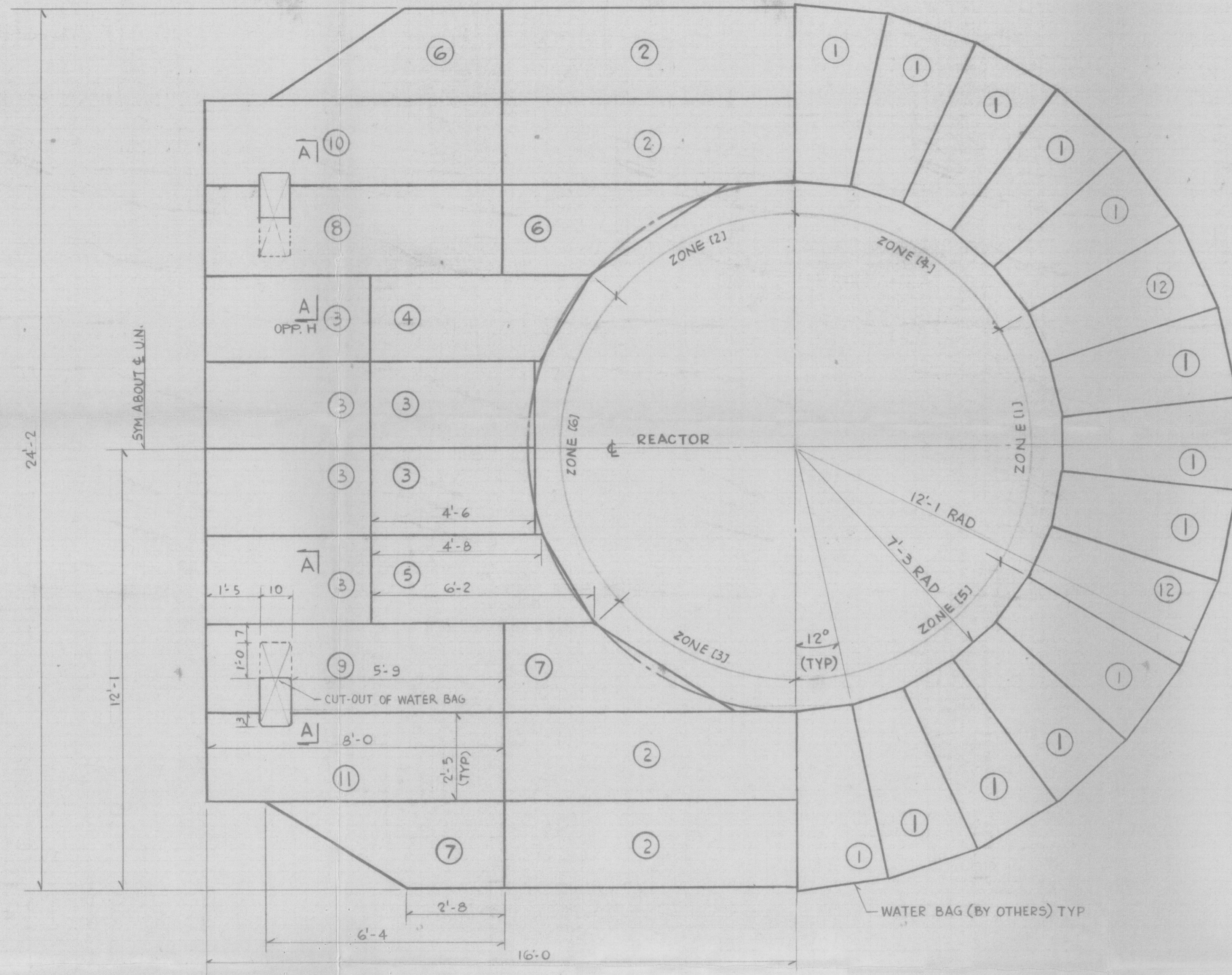


- ① 13 REQ'D. + 2 SPARES
- ② 4 REQ'D. + 1 SPARE
- ③ 6 REQ'D. + 1 SPARE
- ④ 1 REQ'D. + 1 SPARE
- ⑤ 1 REQ'D. + 1 SPARE (OPP HAND OF #4)
- ⑥ 2 REQ'D. + 1 SPARE
- ⑦ 2 REQ'D. + 1 SPARE (OPP HAND OF #6)
- ⑧ 1 REQ'D. + 1 SPARE
- ⑨ 1 REQ'D. + 1 SPARE (OPP HAND OF #8)
- ⑩ 1 REQ'D. + 1 SPARE
- ⑪ 1 REQ'D. + 1 SPARE (OPP HAND OF #10)
- ⑫ 2 REQ'D. (IDENTICAL AS ①)



- DISASSEMBLING SEQUENCE:
- STEP 1. RELEASE WATER IN ⑫'S. UNBOLT SUPPORTING STEEL FRAMING AND THEN HOIST ZONE (1) INCLUDING WATER BAGS AND STEEL FRAMING TO LAY-DOWN AREA.
  - STEP 2. RELEASE WATER IN ⑨ & ②'S. DISASSEMBLE VERT BRACE UNBOLT STEEL FRAMING, AND THEN HOIST ZONE (2) TO LAY-DOWN AREA.
  - STEP 3. DO ZONE (3) SAME AS FOR ZONE (2) IN STEP 2.
  - STEP 4. MOVE ZONE (4).
  - STEP 5. MOVE ZONE (5).
  - STEP 6. MOVE ZONE (6).

- NOTES:
- 1 FOR RE-ASSEMBLING, REVERSE DISASSEMBLING SEQUENCE.
  - 2 STEP 2 & STEP 3 ARE INTERCHANGABLE. SO ARE STEP 4 & STEP 5.

NOTES:

FOR NOTES AND REFERENCE DRAWINGS SEE SK-8770-A5-154 SH.1.

BAG DIMENSIONS SHOWN ARE APPROXIMATE AT THE FILLED HEIGHT INDICATED OR WITH BAG EDGES FOLDED INWARD TO EDGE OF ABRASION PANEL PRIOR TO FILLING.

PEEL STRAPS ARE TO PASS THROUGH GRATING AT MOST APPROPRIATE POINT AND SECURE TO GRATING, TO OPPOSITE STRAP END, OR TO ADJACENT BAG STRAP END.

Project # 59-335  
 Contract # 571676225  
 Date 10/21/76  
 E. REGULATORY BOOKLET FILE

*Preliminary issue*  
 10/21/76

FLORIDA POWER & LIGHT COMPANY  
 ST. LUCIE PLANT  
 1975-890MW INSTALLATION-UNIT NO.1  
 NEUTRON SHIELD - WATER BAG  
 SUPPORT STEEL FRAMING SH.2  
 EBASCO SERVICES INCORPORATED

SCALE: NONE

APPROVED: \_\_\_\_\_ DATE: \_\_\_\_\_

DIV. ARCH-STP  
 DR. M. BEHARRY

SK-8770  
 AS-154 SH.2

NO.	DATE	REVISION	BY	CH.	APPROVED