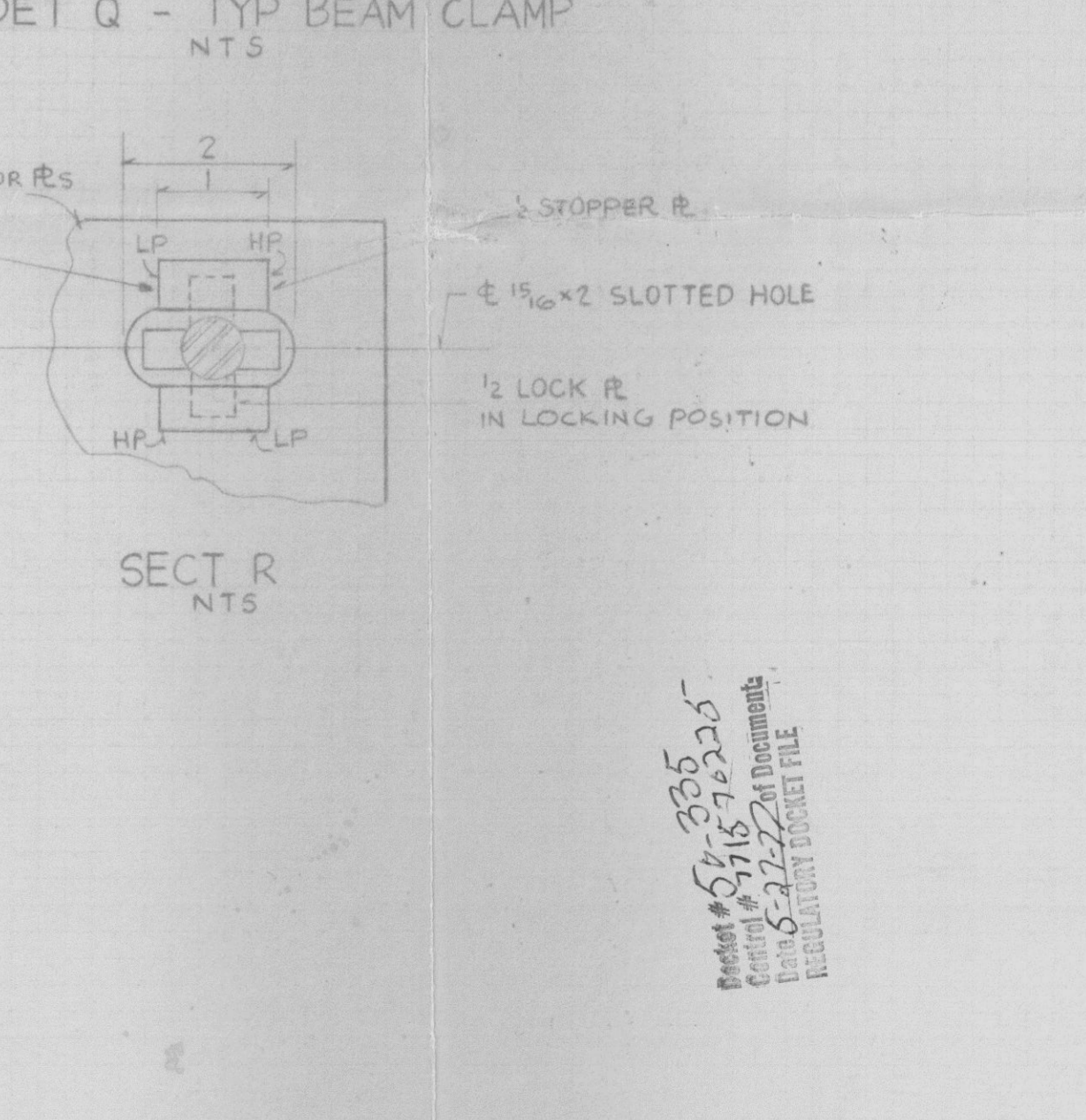
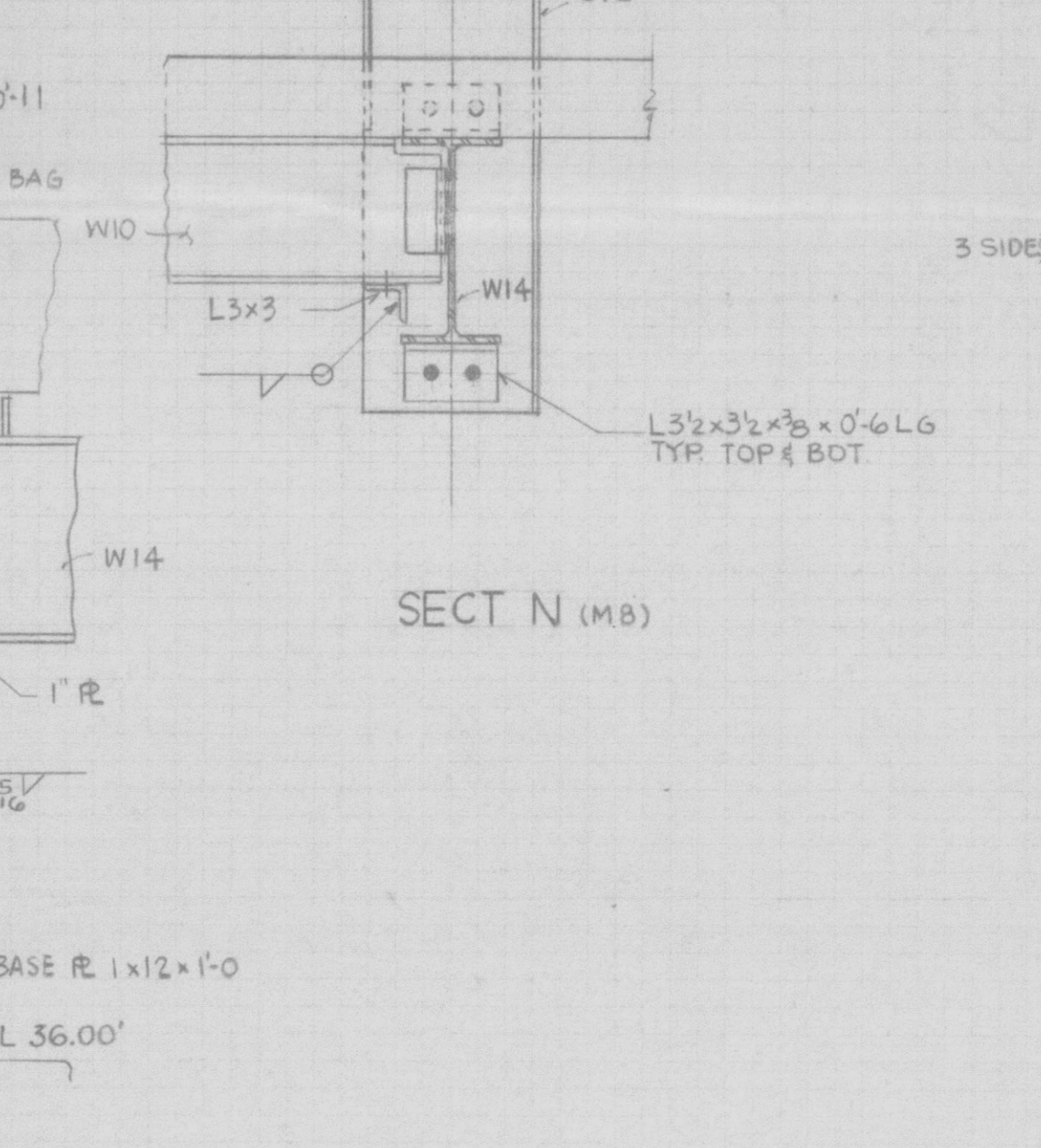
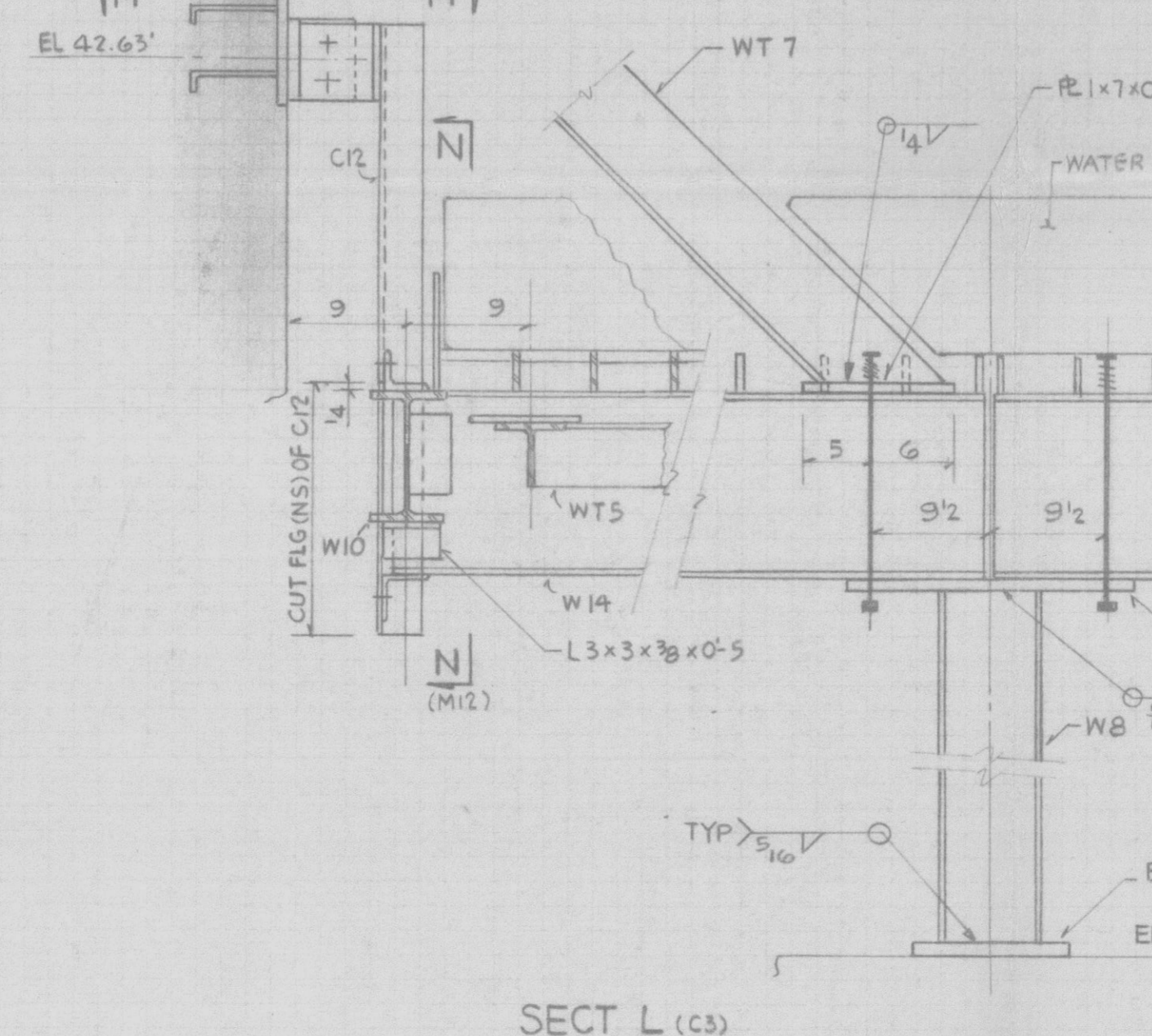
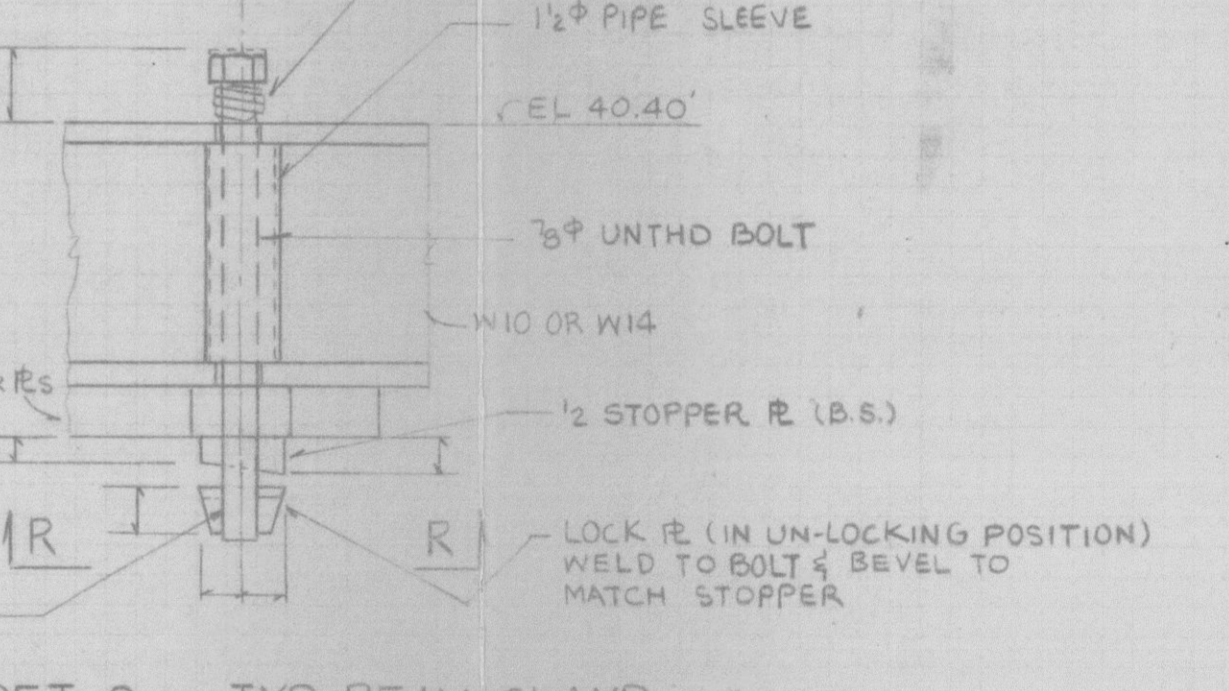
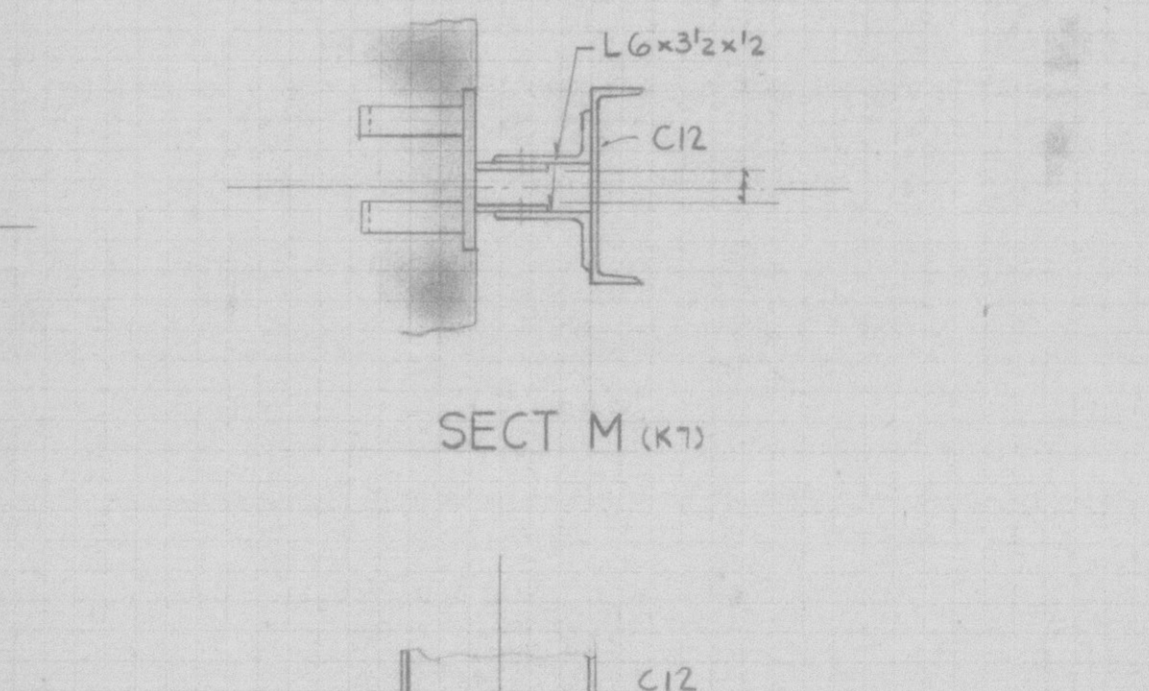
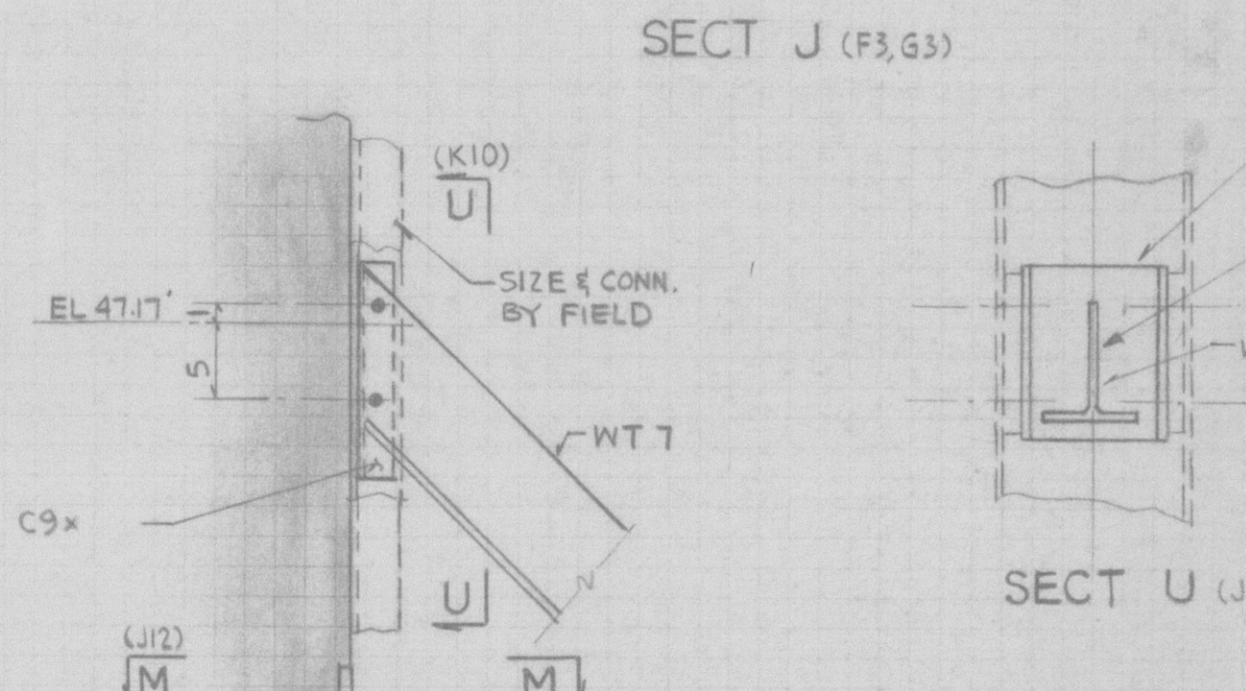


NOTES
 FOR GENERAL NOTES SEE 8770-G-807 SH.1
 ALL STEEL SHALL BE ASTM A36
 ALL MATERIAL SHALL BE FURNISHED BY FIELD
 ALL DIMENSIONS SHALL BE VERIFIED BY FIELD BEFORE ANY WORK IS TO COMMENCE
 → INDICATES THE DIRECTION OF SPANNING OF STEEL BAR 3/8"
 ⊕ INDICATES BEAM CLAMP SEE DET Q FOR DETAIL
 ALL BEAM TO BEAM CONNECTIONS SHALL BE WELDED, USING CLIP ANGLES 2 L4 x 3/8 x 3/8 x 0.52 UNLESS OTHERWISE INDICATED.

REFERENCE DRAWINGS
 REACTOR BUILDING
 REFUELING CANAL LINER SH.1 8770-G-801 SH.1



SEISMIC CLASS I

WORK THIS DWG WITH SK-8770-AS-154 SH.2
 THIS DOCUMENT IS THE PROPERTY OF EBASCO SERVICES INCORPORATED. ITS USE IS EXPRESSLY RESTRICTED BY THE TERMS OF THE CONTRACT, DATED AS OF BETWEEN EBASCO SERVICES INCORPORATED AND FLORIDA POWER & LIGHT COMPANY.

FLORIDA POWER & LIGHT COMPANY
 ST. LUCIE PLANT
 1975-890MW INSTALLATION UNIT NO.1
 NEUTRON SHIELD - WATER BAG
 SUPPORT STEEL FRAMING SH.1

EBASCO SERVICES INCORPORATED	
SCALE 1" = 1'-0"	APPROVED
DATE	DATE
BY ARCH-STRICT	SK-8770
BR. J. CHIANG	AS-154 SH.1
CH.	

NO.	DATE	REVISION	BY	CH.	APPROVED

8770-G-801 SH.1
 8770-G-801 SH.1
 8770-G-801 SH.1
 8770-G-801 SH.1