

Point Beach Nuclear Plant Annual Assessment Summary

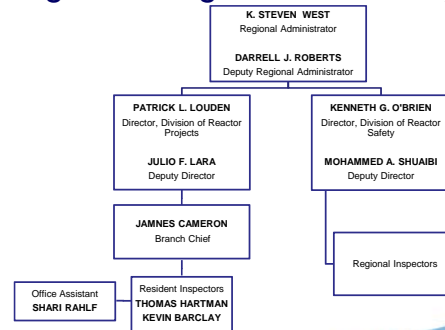
2017 Reactor Oversight Process
Nuclear Regulatory Commission – Region III

Meeting's Purpose



- Public forum for discussion of Point Beach Nuclear Plant's performance in 2017
- NRC will address questions on the plant's performance as identified in the NRC's annual assessment of the plant

Region III Organization



Our Mission



- The NRC licenses and regulates the Nation's civilian use of radioactive materials to provide reasonable assurance of adequate protection of public health and safety and to promote the common defense and security and protect the environment.

4

Some Nuclear Facts



- 99 nuclear power plants supply about 20 percent of the electricity in the U.S.
- Nuclear materials are used in medicine for diagnosis and cancer treatment.
- Nuclear materials are widely used in industry, such as in density gauges, flow measurement devices, radiography devices, and irradiators.

5

What We/NRC Regulate



United States Nuclear Regulatory Commission
Protecting People and the Environment

Reactors



Materials



Waste



What It Includes



United States Nuclear Regulatory Commission
Protecting People and the Environment

Safety



Security



Environment



What We Don't Regulate



United States Nuclear Regulatory Commission
Protecting People and the Environment

Military



Radon



X-Rays



Assurance of Plant Safety Elements



United States Nuclear Regulatory Commission
Protecting People and the Environment

Continuous Training



Long-Term Maintenance



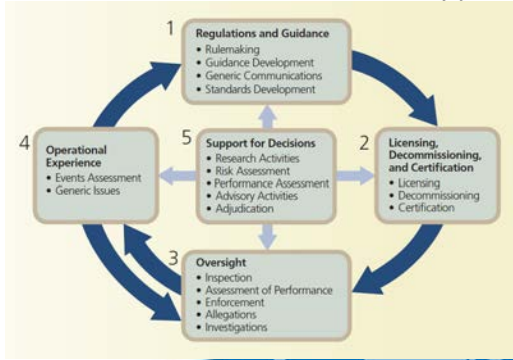
Regulation Compliance



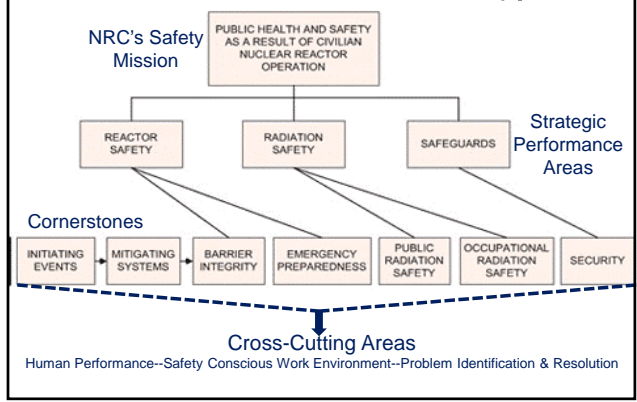
Defense In-Depth



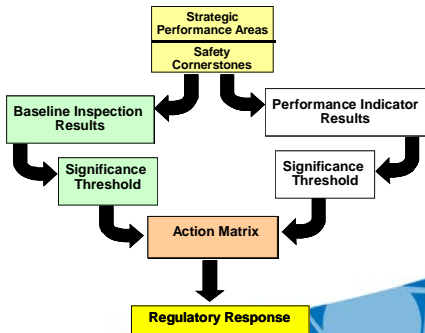
How We Regulate



Regulatory Framework



Reactor Oversight Process



12

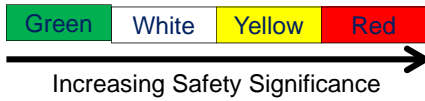
Performance Indicators

- 17 Performance Indicators
- PI's for each cornerstone
- Licensee submits data to NRC quarterly
- Inspection program verifies accuracy
- Data available on NRC website

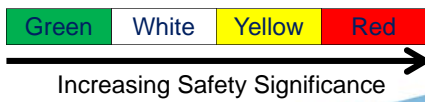
Significance Threshold



Performance Indicators



Inspection Findings



Action Matrix Columns



Licensee Response	Regulatory Response	Degraded Performance	Multiple/Repetitive Degraded Cornerstone	Unacceptable Performance
-------------------	---------------------	----------------------	------------------------------------------	--------------------------



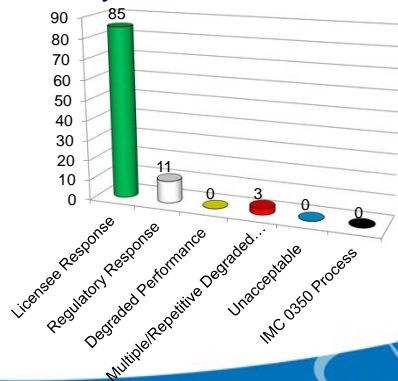
Increasing:

- Safety Significance
- Inspection
- Management Involvement
- Regulatory Action

Industry-Wide Performance



As of 02/20/2018

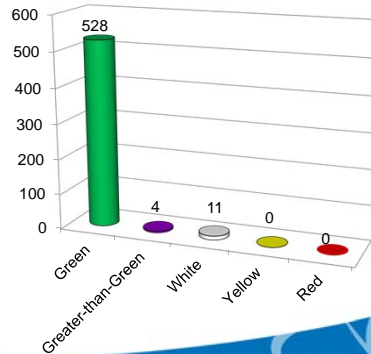


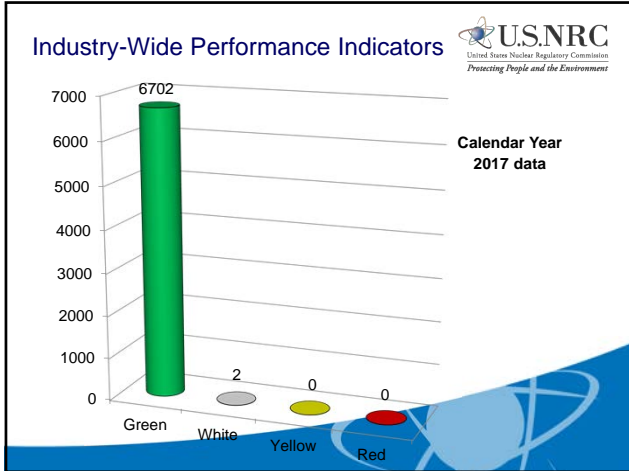
Industry-Wide Inspection Findings



Finding data current as of 2/20/2018

Calendar Year 2017 data





NRC Annual Assessment Summary

Point Beach Nuclear Plant, Units 1 and 2

- NextEra, the Licensee, operated the plant safely and in a manner that preserved the public health and safety and protected the environment.
- Point Beach Nuclear Plant was in the Licensee Response Column of the NRC's ROP Action Matrix for all quarters of 2017.
- NRC plans baseline inspections at Point Beach for 2018.

Examples of Baseline Inspections

- Equipment Alignment ~80 hrs/yr
- Triennial Fire Protection ~250 hrs every 3 yrs
- Operator Response ~125 hrs/yr
- Emergency Preparedness ~80 hrs/yr
- Rad Release Controls ~110 hrs every 2 yrs
- Worker Radiation Protection ~95 hrs/yr
- Corrective Action Program ~250 hrs every 2 yrs
- Corrective Action Case Reviews ~60 hrs/yr

NRC Inspection Activities

Point Beach Nuclear Plant for 2017

- 2 resident inspectors on site – residents produced four quarterly inspection reports and walked through the plant daily
- 22 other inspectors participated in various inspections
- 3 major team inspections
 - Nuclear Design Bases Assurance Inspection
 - Spent Fuel Pool New Level Instrumentation Installation and Use Inspection
 - Emergency Plan Exercise Evaluation

Point Beach Nuclear Plant PIs and Findings



January 1 through December 31, 2017

- All Green Performance Indicators
- 7 Green inspection findings which included:
 - Failure to identify non-conforming conditions during receipt inspection of double-disk gate valves
 - Failure to implement some required provisions of upgraded fire protection program

Actions in Response to the Japan Nuclear Accident



- Actions in response to Japan Nuclear Accident
Website: <https://www.nrc.gov/reactors/operating/ops-experience/japan-dashboard.html>
- Mailbox for comments on staff actions:
JLD_Public.Resource@nrc.gov
- Office of Public Affairs Point of Contact:
OPA.resource@nrc.gov or 301-415-8200

NRC Social Media Channels



- Blog: <http://public-blog.nrc-gateway.gov/>
- Flickr: <http://www.flickr.com/photos/nrcgov/>
- Twitter: <https://twitter.com/#!/nrcgov>
- YouTube: <http://www.youtube.com/user/NRCgov>
- RSS: <http://www.nrc.gov/public-involve/listserver.html#rss>

Contacting the NRC



- Report an emergency
 - (301) 816-5100 (call collect)
- Report a safety concern
 - (800) 695-7403
 - Allegation@nrc.gov
- General information or questions
 - www.nrc.gov
- Point Beach NRC Resident Inspectors
 - 920-755-2309