

**SALEM GENERATING STATION
EVENT CLASSIFICATION GUIDE
January 27, 1995**

**CHANGE PAGES FOR
REVISION #40**

The Table of Contents forms a general guide to the current revision of each section of the SALEM ECG. The changes that are made in this TOC Revision #40 are shown below. Please check that your revision packet is complete and remove the outdated material listed below:

ADD			REMOVE		
<u>Page</u>	<u>Description</u>	<u>Rev.</u>	<u>Page</u>	<u>Description</u>	<u>Rev.</u>
1 of 1 thru 2 of 2	TOC ✓	40	1 of 2 thru 2 of 2	TOC	39
1 of 2 thru 2 of 2	Sig. Sec i-18 ✓	22	1 of 2 thru 2 of 2	Sig. Sec i-18	21
1 of 2 thru 2 of 2	Sig. Att 1-23 ✓	33	1 of 2 thru 2 of 2	Sig. Att 1-23	32
ALL	Section 13 ✓	2	ALL	Section 13	1
ALL	Section 14 ✓	2	ALL	Section 14	1
ALL	Attachment 6 ✓	22	ALL	Attachment 6	21
ALL	Attachment 7 ✓	21	ALL	Attachment 7	20
ALL	Attachment 9 ✓	20	ALL	Attachment 9	19

9502150153

**SALEM GENERATING STATION
EVENT CLASSIFICATION GUIDE
January 27, 1995**

**CHANGE PAGES FOR
REVISION #40**

The Table of Contents forms a general guide to the current revision of each section of the SALEM ECG. The changes that are made in this TOC Revision #40 are shown below. Please check that your revision packet is complete and remove the outdated material listed below:

ADD			REMOVE		
<u>Page</u>	<u>Description</u>	<u>Rev.</u>	<u>Page</u>	<u>Description</u>	<u>Rev.</u>
1 of 1 thru 2 of 2	TOC	40	1 of 2 thru 2 of 2	TOC	39
1 of 2 thru 2 of 2	Sig. Sec i-18	22	1 of 2 thru 2 of 2	Sig. Sec i-18	21
1 of 2 thru 2 of 2	Sig. Att 1-23	33	1 of 2 thru 2 of 2	Sig. Att 1-23	32
ALL	Section 13	2	ALL	Section 13	1
ALL	Section 14	2	ALL	Section 14	1
ALL	Attachment 6	22	ALL	Attachment 6	21
ALL	Attachment 7	21	ALL	Attachment 7	20
ALL	Attachment 9	20	ALL	Attachment 9	19

SALEM
EVENT CLASSIFICATION GUIDE
TABLE OF CONTENTS - (Continued)
November 28, 1994

<u>ATTACHMENT</u>	<u>TITLE</u>	<u>REV.</u>	<u>PAGES</u>	<u>EFFECTIVE DATE</u>
1.	Unusual Event	14	16	Nov 28, 1994
2.	Alert	7	7	May 21, 1994
3.	Site Area Emergency	7	7	May 21, 1994
4.	General Emergency	6	9	May 21, 1994
5.	Reserved			
6.	CM1 Log (UE/A/SAE)	21	10	Oct 7, 1994
7.	CM1 Log (GE)	20	10	Oct 7, 1994
8.	CM2 Log	13	14	Nov 28, 1994
9.	Non-Emergency Notifications Reference	19	3	Oct 7, 1994
10.	One Hour Report - NRC/Region	1	5	July 27, 1990
11.	One Hour Report - NRC/OPS (Security)	2	5	July 27, 1990
12.	One Hour Report - NRC/OPS	2	5	Apr 26, 1991
13.	Reserved			
14.	Four Hour Report - NRC/OPS	3	5	July 27, 1990
15.	Environmental Protection Plan	3	3	Sept 23, 1991
16.	Spill/Discharge Reporting	6	9	Nov 28, 1994
17.	Four Hour Report - Fatality/Medical	4	7	Apr 27, 1993
18.	Four Hour Report - Transportation Accident	1	6	July 27, 1990
19.	Twenty Four Hour Report - FFD	1	3	Sept 23, 1991
20.	Twenty Four Hour Report - NRC/OPS	2	5	July 27, 1990
21.	Reportable Event - LACT/MOU	0	2	May 26, 1989
22.	Other/Engineering	2	3	Sept 23, 1991
23.	Written Reports/LEERS/Others	3	10	Jan 7, 1994

Independent Paper by Rev. ECG
 9502150153
 1/27/95
 50272/1311

CONTROL COPY #

101

**SALEM
EVENT CLASSIFICATION GUIDE
TABLE OF CONTENTS
November 28, 1994**

<u>SECTION</u>	<u>TITLE</u>	<u>REV.</u>	<u>PAGES</u>	<u>EFFECTIVE DATES</u>
T.O.C.	Table of Contents	39	2	Nov 28, 1994
Sig. i-18	Section Identification/Signature Page	21	2	Nov 18, 1994
Sig. Att.	ECG Attachments/Signature Page	32	2	Nov 28, 1994
i.	Introduction	2	6	Jan 7, 1994
ii.	Cross Reference - Event to Requirement	3	12	Nov 18, 1994
iii.	Cross Reference - Attachment to Events	9	1	July 15, 1993
1.	PRIMARY LEAKAGE/SG TUBE LEAKAGE	6	3	July 15, 1994
2.	SECONDARY LEAKAGE	1	1	July 15, 1994
3.	FAILURE TO TRIP/RPS PROBLEMS	1	2	Nov 2, 1990
4.	LOSS OF DECAY HEAT REMOVAL	0	2	May 26, 1989
5.	FUEL DAMAGE/DEGRADED CORE	2	2	July 15, 1994
	FISSION PRODUCT BOUNDARY FAILURE	2	1	July 15, 1994
7.	RADIOLOGICAL RELEASES/OCCURRENCES	4	5	Jan 28, 1994
8.	NON-RADIOACTIVE LEAK/SPILL (toxic gas, oil spill, hazmat)	3	2	Jan 7, 1994
9.	ELECTRICAL POWER FAILURE	3	3	Nov 18, 1994
10.	LOSS OF INSTRUMENTS/ALARMS/COMMUNICATIONS	4	2	Apr 19, 1993
11.	CONTROL ROOM EVACUATION	0	1	May 26, 1989
12.	QUAKE/STORMS (earthquake, wind, floods, etc)	4	6	Jan 7, 1994
13.	SITE HAZARDS (aircraft crash, missiles, explosions, etc.)	1	5	Aug 21, 1992
14.	FIRE	1	1	Aug 21, 1992
15.	PERSONNEL EMERGENCIES/MEDICAL	2	2	Jan 7, 1994
16.	SECURITY EVENTS/FFD	4	3	Sept 23, 1991
17.	PUBLIC INTEREST ITEMS	7	3	July 15, 1994
18.	TECH SPECS/PLANT STATUS CHANGES	9	6	Jan 7, 1994

CONTROL COPY # _____ 101

ATTACHMENT 6

DESIGNATED COMMUNICATOR (CM1) COMMUNICATIONS LOG

- UNUSUAL EVENT
- ALERT
- SITE AREA EMERGENCY
- PROTECTIVE ACTION RECOMMENDATION (PAR) UPDATE (FOR SITE AREA EMERGENCY)

Table of Contents

	<u>Page</u>
(CM1/TSC1/EOF1) Instructions	2-4
Communications Log - Salem Emergency	5-10

Instructions

1. This is a permanent record.
2. Initial items implemented.

Name

Date

Time

CR TSC EOF

Location (circle one)

I. DESIGNATED COMMUNICATOR (CM1/TSC1/EOF1) INSTRUCTIONS

Initials

NOTE

Implement a new working copy of this attachment for changes in Emergency Classification as directed by the Emergency Coordinator (EC).

CM1/TSC1
/EOF1

1. Obtain approved Initial Contact Message Form (ICMF) from the Emergency Coordinator (EC). Telephonically provide ICMF to contacts on the Communications Log (pages 5 through 10). See step 10 for pager (beeper) activation instructions.

NOTE

Turnover of notifications responsibility may only occur after the Emergency Coordinator position transfers and a copy of the ICMF is available to the oncoming communicator (TSC or EOF).

CM1/TSC1

2. When the TSC (or EOF) is ready to assume notifications responsibilities, discuss the following with your relief.
 - a. Organizations/Individuals notified of the current level of Emergency.
 - b. Provide, as appropriate, names and locations (numbers) of those contacted for updates/changes.

CM1/TSC1
/EOF1

3. Initiate followup transmission of ICMF on telecopier Group A if not done previously.

CM1

4. Assist the Secondary Communicator (CM2) in the transmission of data forms using the telecopier.

INITIALS

CAUTION

You are not authorized to release any information concerning the emergency to the News Media.

- CM1/TSC1
/EOF1
5. Refer request for information from the News Media or any other incoming phone calls (other than verification call backs) to the CM2.
- TSC1/EOF1
6. When all notifications are completed, assist the TSC2 (EOF2) in maintaining required status boards or as directed by the Emergency Preparedness Advisor (EPA).
- CM1
7. If telecopier is not working properly, request assistance from the Emergency Preparedness Advisor in the TSC (NETS 5113).
- CM1/TSC1
/EOF1
8. When the Emergency has been terminated or reduced in classification, obtain the approved EMERGENCY TERMINATION/REDUCTION FORM, from the EC. Implement notifications using the Communications Log and note contacts in the Event Reduction Column (time limits do not apply).
- CM1/TSC1
/EOF1
9. When the emergency is terminated or you are relieved of duty, forward this and all other completed documents to the SNSS/EDO/ERM.
- CM1/TSC1
/EOF1
10. If required to activate an individual's pager, follow the following instructions.
- A. Dial the pager number of the individual you are trying to contact listed in the Communications Log.

CAUTION

When entering the phone number where the pager holder should call you back at, make sure you provide the complete number of a phone that is not in use; and make sure you DO NOT enter a NETS phone number.

- B. When you hear "Beep, Beep, Beep" you should enter the phone number that you want the pager holder to call you on. This is done using the touch-tone key pad on the phone you are on.
- C. Hang up the phone. Pager holder should call you back on the phone number you provided within 5 minutes (approximately).

COMMUNICATIONS LOG

INITIAL NOTIFICATION

EVENT REDUCTION

TIME LIMIT	CLASSIFICATION: (UE/A/SAE) ORGANIZATIONS/INDIVIDUALS	NAME OF CONTACT	DATE/ TIME	CALLER	NAME OF CONTACT/ TIME
15 MIN.	DELAWARE STATE POLICE/DEMA Primary: NETS 5406/5407 Secondary: 302-739-5851 (SP) or 302-834-4531 (DEMA) Backup: NAWAS	Call Back:			
NOTES: IF DELAWARE IS CONTACTED, PROCEED WITH NEW JERSEY.		IF UNABLE TO CONTACT DELAWARE STATE (above), CONTACT BOTH OF THE FOLLOWING.			
NEW CASTLE COUNTY Primary: NETS 5408 Secondary: 302-738-3131					
KENT COUNTY Primary: NETS 5409 Secondary: 302-678-9111					
15 MIN.	NEW JERSEY STATE POLICE/OEM (Speak only with Trooper on duty) Primary: Nets 5400 Secondary: 882-2000 Backup: EMRAD	Call Back:			
NOTES: IF NEW JERSEY IS CONTACTED, PROCEED TO NEXT PAGE.		IF UNABLE TO CONTACT NEW JERSEY STATE (above), CONTACT ALL OF THE FOLLOWING.			
SALEM COUNTY Primary: NETS 5402 Secondary: 769-2959					
CUMBERLAND COUNTY Primary: NETS 5403 Secondary: 455-8500					
U. S. COAST GUARD (Speak Only With Duty Desk) Primary: 215-271-4940 Secondary: 215-271-4800					

COMMUNICATIONS LOG

INITIAL NOTIFICATION

EVENT REDUCTION

TIME LIMIT	CLASSIFICATION: _____ UE/A/SAE) ORGANIZATIONS/INDIVIDUALS	NAME OF CONTACT	DATE/ TIME	CALLER	EVENT REDUCTION NAME OF CONTACT/ TIME
20 MIN.	EMERGENCY DUTY OFFICER (EDO) Primary: Refer to Roster Secondary: (Contact One) John Morrison Office: 2068 Home: 609-769-2595 Pager: 478-5161 Car: 609-471-9457 Mike Morrioni Office: 5142 Home: 609-455-4770 Pager: 478-5621 Car: 609-471-9878 Charly Munzenmaier Office: 2124 Home: 609-769-8095 Pager: 478-5708 Car: 609-471-6192 Lee Catalfomo Office: 2613 Home: 609-453-0096 Pager: 478-5038 Car: 609-922-0847 Art Orticelle Office: 2122 Home: 609-453-0377 Pager: 478-5155 Car: 609-230-5604	*			
20 MIN.	TECH. SUPP. SUPERVISOR (TSS) (Contact One) Phil O'Donnell Office: 2640 Home: 609-327-4645 Pager: 478-5602 Pete Ott Office: 2985 Home: 302-239-9626 Pager: 478-5137 Brian O'Grady Office: 2622 Home: 609-678-8052 Pager: 478-5035	*			

* After TSC activation, individual notification of EDO and TSS is not required by TSC1 or EOF1.

COMMUNICATIONS LOG

INITIAL NOTIFICATION

EVENT
 REDUCTION

TIME LIMIT	CLASSIFICATION: _____ (UE/A/SAE) ORGANIZATIONS/INDIVIDUALS	NAME OF CONTACT	DATE/ TIME	CALLER	NAME OF CONTACT/ TIME
<p>NRC OPS CENTER COMMUNICATION INSTRUCTIONS:</p> <ol style="list-style-type: none"> 1. Obtain the approved NRC Data Sheet from Communicator #2. 2. Read both the ICMF and NRC Data Sheet to the NRC Operations Center. (Fill in Communications Log at bottom of this page) 3. <u>IF</u> the NRC is requesting additional information concerning the event, <u>THEN</u> obtain assistance from the Control Room (TSC/EOF) staff. 4. <u>IF</u> requested by the NRC, maintain an open phone line and request Communicator #2 to complete any remaining calls on Communicator #1 log. <p style="text-align: center;">NOTE:</p> <p>As manpower permits, the Emergency Coordinator may assign an additional communicator (preferably an RO or SRO) to provide continuous updates to the NRC. The assignment of an additional communicator should not be made if personnel being considered are required to mitigate the event or to complete high priority Emergency Response functions.</p>					
60 MIN.	NRC OPERATIONS CENTER (ICMF & NRC Data Sheet) Primary: (ENS) 301-816-5100 Secondary: 301-951-0550				

COMMUNICATIONS LOG

INITIAL NOTIFICATION

EVENT
 REDUCTION

TIME LIMIT	CLASSIFICATION: (UE/A/SAE) ORGANIZATIONS/INDIVIDUALS	NAME OF CONTACT	DATE/ TIME	CALLER	NAME OF CONTACT/ TIME
60 MIN.	NRC RESIDENTS (Contact One) Charlie Marschall Office: 2962 or 935-3850 Home: 610-444-0181 Pager: 772-4742 Joe Schoppy Office: 2962 or 935-3850 Home: 609-384-1365 Pager: 772-4742 Todd Fish Office: 2962 or 935-3850 Home: 302-654-6612 Pager: 772-4742				
60 MIN.	EMERGENCY PREPAREDNESS (Contact One) Tom DiGuisseppi Office: 1517 Home: 609-455-6045 Pager: 478-5203 Craig Banner Office: 1157 Home: 609-728-5043 Pager: 478-5215 Jim Schaffer Office: 1575 Home: 609-299-2057 Pager: 478-5086	**			

** Not Required After the EOF is Activated.

COMMUNICATIONS LOG

INITIAL NOTIFICATION

EVENT
 REDUCTION

TIME LIMIT	CLASSIFICATION: _____ (UE/A/SAE) ORGANIZATIONS/INDIVIDUALS	NAME OF CONTACT	DATE/ TIME	CALLER	NAME OF CONTACT/ TIME
NOTE: External Affairs Repr. will contact the Board of Public Utilities.					
90 MIN	EXTERNAL AFFAIRS (Contact One) Max LeFevre Office: 1243 Home: 609-451-9324 Pager: 478-5094 Bryan Gorman Office: 1433 Home: 302-455-0220 Pager: 478-5100 Ross Bell Office: 1239 Home: 609-455-7435 Pager: 478-5213	**			
90 MIN.	AMERICAN NUCLEAR INSURERS (ANI) 203-561-3433	*			

- * Not Required for Unusual Events to Notify ANI.
- ** Not Required after the EOF is activated.

CONTROL
COPY # 101

ECG
ATT 7
Pg. 1 of 10

ATTACHMENT 7

DESIGNATED COMMUNICATOR (CM1) COMMUNICATIONS LOG

- GENERAL EMERGENCY
- PROTECTIVE ACTION RECOMMENDATION (PAR) UPDATE

Table of Contents

	<u>Page</u>
(CM1/TSC1/EOF1) Instructions	2-4
Communications Log - Salem Emergency	5-10

Instructions

1. This is a permanent record.
2. Initial items implemented.

Name

Date Time

CR TSC EOF
Location (circle one)

I. DESIGNATED COMMUNICATOR (CM1/TSC1/EOF1) INSTRUCTIONS

Initials

NOTE

Implement a new working copy of this attachment for changes in Emergency Classification as directed by the Emergency Coordinator (EC).

NOTE

For 15 minute notifications use NETS X5555 conference call (separate contact required for Coast Guard).

CM1/TSC1
/EOF1

1. Obtain approved Initial Contact Message Form (ICMF) from the Emergency Coordinator (EC). Telephonically provide ICMF to contacts on the Communications Log (pages 5 through 9). See step 10 for pager (beeper) activation instructions.

NOTE

Turnover of notifications responsibility may only occur after the Emergency Coordinator position transfers and a copy of the ICMF is available to the oncoming communicator (TSC or EOF).

CM1/TSC1

2. When the TSC (or EOF) is ready to assume notifications responsibilities, discuss the following with your relief.
 - a. Organizations/Individuals notified of the current level of Emergency.
 - b. Provide, as appropriate, names and locations (numbers) of those contacted for updates/changes.

CM1/TSC1
/EOF1

3. Initiate followup transmission of ICMF on telecopier Group A if not done previously.

Initials

CM1

4. Assist the Secondary Communicator (CM2) in the transmission of data forms using the telecopier.

CAUTION

You are not authorized to release any information concerning the emergency to the News Media.

CM1/TSC1
/EOF1

5. Refer request for information from the News Media or any other incoming phone calls (other than verification call backs) to the CM2 (TSC2/EOF2).

TSC1/
EOF1

6. When all notification are completed, assist the TSC2 (EOF2) in maintaining required status boards or as directed by the Emergency Preparedness Advisor (EPA).

CM1

7. If telecopier is not working properly, request assistance from the Emergency Preparedness Advisor in the TSC (NETS 5113).

CM1/TSC1
/EOF1

8. When the Emergency has been terminated or reduced in classification, obtain the approved EMERGENCY TERMINATION/REDUCTION FORM, from the EC. Implement notifications using the Communications Log and note contacts in the Event Reduction Column (time limits do not apply).

CM1/TSC1
/EOF1

9. When the emergency is terminated or you are relieved of duty, forward this and all other completed documents to the SNSS/EDO/ERM.

Initials

 10. If required to activate an individual's pager,
CM1/TSC1 follow the following instructions:
/EOF1

- A. Dial the pager number of the individual you are trying to contact listed in the Communications Log.

CAUTION

When entering the phone number where the pager holder should call you back at, make sure you provide the complete number of a phone that is not in use; and make sure you DO NOT enter a NETS phone number.

- B. When you hear "Beep, Beep, Beep" you should enter the phone number that you want the pager holder to call you on. This is done using the touch-tone key pad on the phone you are on.
- C. Hang up the phone. Pager holder should call you back on the phone number you provided within 5 minutes (approximately).

COMMUNICATIONS LOG

INITIAL NOTIFICATION

EVENT REDUCTION

TIME LIMIT	CLASSIFICATION: General Emergency ORGANIZATIONS/INDIVIDUALS	NAME OF CONTACT	DATE/TIME	CALLER	NAME OF CONTACT/TIME
15 MIN.	NEW JERSEY STATE POLICE/OEM (Speak only with Trooper on duty) Primary: Nets 5400 Secondary: 882-2000	Call Back:			
	DELAWARE STATE POLICE/DEMA Primary: Nets 5406/5407 Secondary: 302-739-5851 (SP) or 302-834-4531 (DEMA) Backup: NAWAS	Call Back:			
	LAC TOWNSHIP Primary: Nets 5404 Secondary: 935-7300	Call Back:			
	SALEM COUNTY Primary: NETS 5402 Secondary: 769-2959 Backup: EMRAD	Call Back:			
	CUMBERLAND COUNTY Primary: NETS 5403 Secondary: 455-8500 Backup: EMRAD	Call Back:			
	NEW CASTLE COUNTY Primary: NETS 5408 Secondary: 302-678-9111	Call Back:			
	KENT COUNTY Primary: NETS 5409 Secondary: 302-736-2112	Call Back:			
15 MIN.	U.S. COAST GUARD (Speak Only With Duty Desk) Primary: 215-271-4940 Secondary: 215-271-4800	Call Back:			

Reminder: Use NETS 5555 (conference call) for 15 min. notification(s) except for U.S. Coast Guard.

NOTES: _____

COMMUNICATIONS LOG

INITIAL NOTIFICATION

EVENT REDUCTION

TIME LIMIT	CLASSIFICATION: General Emergency ORGANIZATIONS/INDIVIDUALS	NAME OF CONTACT	DATE/TIME	CALLER	NAME OF CONTACT/TIME
20 MIN.	EMERGENCY DUTY OFFICER (EDO) Primary: Refer to Roster Secondary: (Contact One) John Morrison Office: 2068 Home: 609-769-2595 Pager: 478-5161 Car: 471-9457 Mike Morrioni Office: 5142 Home: 609-455-4770 Pager: 478-5621 Car: 471-9878 Charly Munzenmaier Office: 2124 Home: 609-769-8095 Pager: 478-5708 Car: 471-6192 Lee Catalfomo Office: 2613 Home: 609-453-0096 Pager: 478-5038 Car: 922-0847 Art Orticelle Office: 2122 Home: 609-453-0377 Pager: 478-5155 Car: 230-5604	*			
20 MIN.	TECH. SUPP. SPVSR. (TSS) (Contact One) Phil O'Donnell Office: 2640 Home: 609-327-4645 Pager: 478-5602 Pete Ott Office: 2985 Home: 302-239-9626 Pager: 478-5137 Brian O'Grady Office: 2622 Home: 609-678-8052 Pager: 478-5035	*			

* After TSC activation, individual notification of EDO and TSS not required by TSC1 or EOF1.

COMMUNICATIONS LOG

INITIAL NOTIFICATION

EVENT
 REDUCTION

TIME LIMIT	CLASSIFICATION: General Emergency ORGANIZATIONS/INDIVIDUALS	NAME OF CONTACT	DATE/ TIME	CALLER	NAME OF CONTACT/ TIME
30 MIN.	GENERAL MANAGER - SALEM Operations (Contact One) Joe Hagan Office: 2900 Home: 609-678-5265 Pager: 478-5279 Car: 609-230-5609 Lee Catalfomo Office: 2613 Home: 609-453-0096 Pager: 478-5038 Car: 922-0847				
30 MIN.	PUBLIC INFORMATION MANAGER- NUCLEAR (Contact One) Bill Stewart Office: 1006 Home: 609-935-0923 Pager: 478-5226 Michael Camp Office: 1001 Home: 302-529-9027 Pager: 478-5318 Chris Florentz Office: 1002 Home: 215-543-0729 Pager: 478-5367	*			

* After ENC activation, notify the ENC and read the ICMF to the ENC Manager (NETS - 5300 or 273-1961).

COMMUNICATIONS LOG

INITIAL NOTIFICATION

EVENT
 REDUCTION

TIME LIMIT	CLASSIFICATION: _____ (GE) ORGANIZATIONS/INDIVIDUALS	NAME OF CONTACT	DATE/ TIME	CALLER	NAME OF CONTACT/ TIME
<p>NRC OPS CENTER COMMUNICATION INSTRUCTIONS:</p> <ol style="list-style-type: none"> 1. Obtain the approved NRC Data Sheet from Communicator #2. 2. Read both the ICMF and NRC Data Sheet to the NRC Operations Center. (Fill in Communications Log at bottom of this page) 3. <u>IF</u> the NRC is requesting additional information concerning the event, <u>THEN</u> obtain assistance from the Control Room (TSC/EOF) staff. 4. <u>IF</u> requested by the NRC, maintain an open phone line and request Communicator #2 to complete any remaining calls on Communicator #1 log. <p style="text-align: center;">NOTE:</p> <p>As manpower permits, the Emergency Coordinator may assign an additional communicator (preferably an RO or SRO) to provide continuous updates to the NRC. The assignment of an additional communicator should not be made if personnel being considered are required to mitigate the event or to complete high priority Emergency Response functions.</p>					
60 MIN.	NRC OPERATIONS CENTER (ICMF & NRC Data Sheet) Primary: (ENS) 301-816-5100 Secondary: 301-951-0550				

COMMUNICATIONS LOG

INITIAL NOTIFICATION

EVENT
 REDUCTION

TIME LIMIT	CLASSIFICATION: General Emergency ORGANIZATIONS/INDIVIDUALS	NAME OF CONTACT	DATE/ TIME	CALLER	NAME OF CONTACT/ TIME
60 MIN.	NRC RESIDENTS (Contact One) Charlie Marschall Office: 2962 or 935-3850 Home: 610-444-0181 Pager: 772-4742 Joe Schoppy Office: 2962 or 935-3850 Home: 609-384-1365 Pager: 772-4742 Todd Fish Office: 2962 or 935-3850 Home: 302-654-6612 Pager: 772-4742				
60 MIN.	EMERGENCY PREPAREDNESS (Contact One) Tom DiGuisseppi Office: 1517 Home: 609-455-6045 Pager: 478-5203 Craig Banner Office: 1157 Home: 609-728-5043 Pager: 478-5215 Jim Schaffer Office: 1575 Home: 609-299-2057 Pager: 478-5086	**			

** Not Required After the EOF is Activated.

COMMUNICATIONS LOG

INITIAL NOTIFICATION

EVENT
 REDUCTION

TIME LIMIT	CLASSIFICATION: General Emergency ORGANIZATIONS/INDIVIDUALS	NAME OF CONTACT	DATE/ TIME	CALLER	NAME OF CONTACT/ TIME
	NOTE: External Affairs Repr. will contact the Board of Public Utilities.				
90 MIN	EXTERNAL AFFAIRS (Contact One) Max LaFevre Office: 1243 Home: 609-451-9324 Pager: 478-5094 Bryan Gorman Office: 1433 Home: 302-455-0220 Pager: 478-5100 Ross Bell Office: 1239 Home: 609-455-7435 Pager: 478-5213	**			
90 MIN.	AMERICAN NUCLEAR INSURERS (ANI) 203-561-3433	*			

* Not Required for Unusual Events to Notify ANI.
 ** Not Required after the EOF is activated.

CONTROL

COPY #

101

ECG

ATT 9

Pg. 1 of 3

ATTACHMENT 9
NON-EMERGENCY NOTIFICATIONS REFERENCE
(SALEM)

NOTE

This attachment is intended to be used as the source of the most up-to-date name and telephone numbers for making Non-Emergency reports as directed by the ECG Attachment in effect at this time.

NOTE

The SNSS may direct a communicator to make the required notification calls after the Operations Manager has been consulted to confirm the classification. The responsibility to ensure completion of each step outlined in the ECG attachment and to ensure notification information is accurate remains with the SNSS.

- A. Notify the required Individuals/Organizations per the ECG Attachment in effect utilizing Section II of this Attachment as a reference.
- B. If required to activate an individual's pager, follow the following instructions.
 1. Determine a non-NETS phone number for the pager holder to call back on and make a note of the full call back phone number.
 2. Dial the pager number of the individual you are trying to contact listed in the Communications Log, using any touch-tone phone.
 3. When you hear "Beep, Beep, Beep" enter the call back number using the touch-tone key pad on the phone you are on.
 4. Hang up the phone.
 5. Continue making other notifications per Step A.

II. Telephone Number Reference

NOTE

Notify ONLY those individuals by title required by the particular ECG Attachment in effect at this time.

TITLES/NAMES	WORK#	HOME#	PAGER#	CAR#
OPERATIONS MGR	(Contact One)			
Lee Catalfomo	2613	(609) 453-0096	478-5038	(609) 922-0847
Phil O'Donnell	2640	(609) 327-4645	478-5602	---
Pete Ott	2985	(302) 239-9626	478-5137	---
Brian O'Grady	2622	(609) 678-8052	478-5035	---
GENERAL MGR	(Contact One)			
Joe Hagan	2900	(609) 678-5265	478-5279	(609) 230-5609
Lee Catalfomo	2613	(609) 453-0096	478-5038	(609) 922-0847

GOVERNMENT AGENCY	PRIMARY#	SECONDARY#
LAC DISPATCHER	NETS 5404	(609) 935-7300
NRC OPERATIONS CENTER	(ENS) 301-816-5100	(301) 951-0550 (301) 816-5151 (FAX)
NRC REGIONAL OFFICE	(215) 337-5000	---

TITLES/NAMES	WORK#	HOME#	PAGER#
NRC RESIDENT	(Contact One)		
Charlie Marschall	2962 or	935-3850 (610) 444-0181	772-4742
Joe Schoppy	2962 or	935-3850 (609) 384-1365	772-4742
Todd Fish	2962 or	935-3850 (302) 654-6612	772-4742
NRC Office	Alt #	935-5151	
PUBLIC INFO MGR	(Contact One)		
Bill Stewart	1006	(609) 935-0923	478-5226
Michaele Camp	1001	(302) 529-9027	478-5318
Chris Florentz	1002	(215) 543-0729	478-5367

II. Telephone Number Reference (Cont)

NOTE

Notify ONLY those individuals by title required by the particular ECG Attachment in effect at this time.

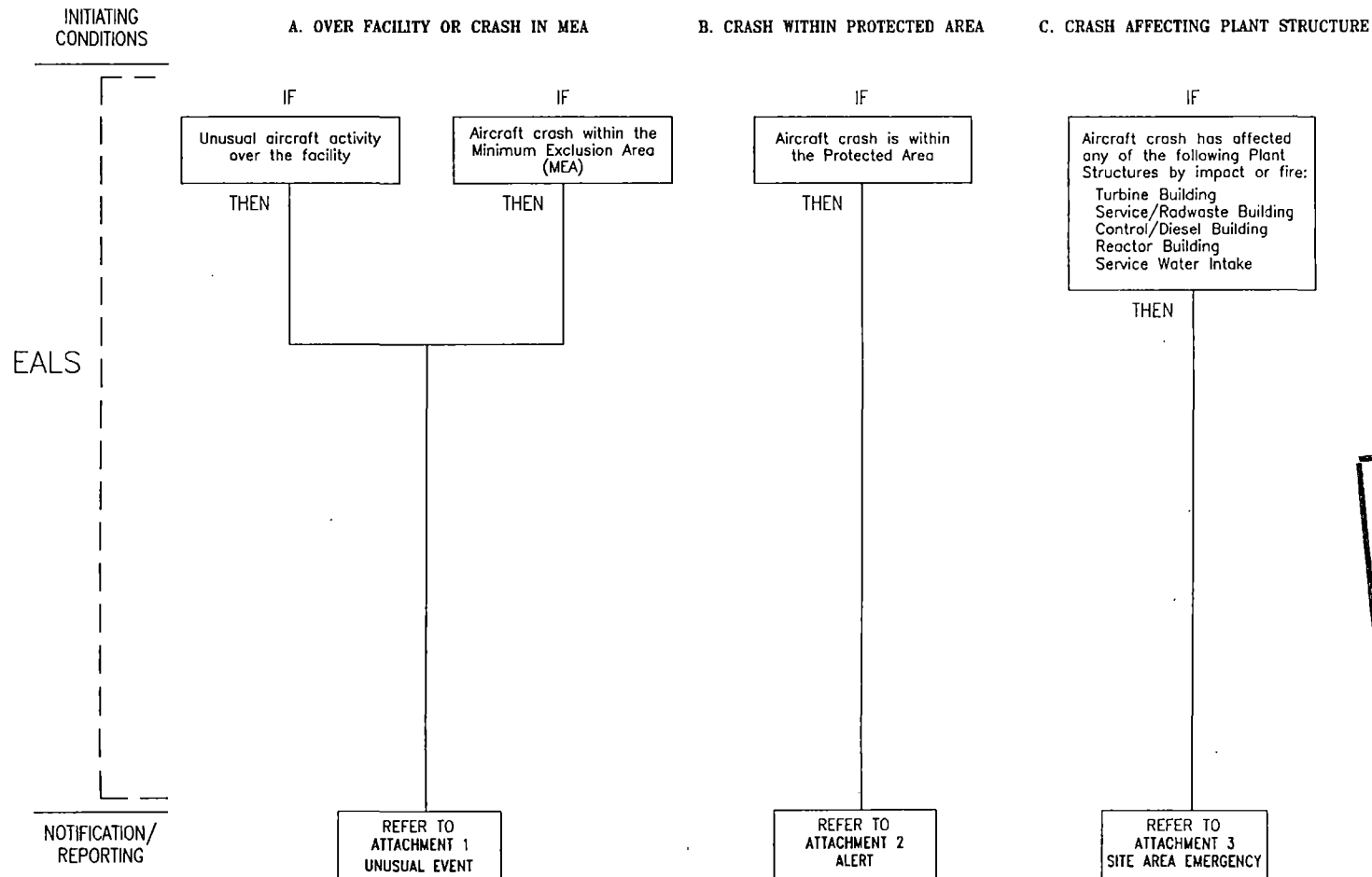
TITLES/NAMES	WORK#	HOME#	PAGER#
EMERG PREP REP	(Contact One)		
Tom DiGuiseppi	1517	(609)455-6045	478-5203
Craig Banner	1157	(609)728-5043	478-5215
Jim Schaffer	1575	(609)299-2057	478-5086
EXTERNAL AFFAIRS	(Contact One)		
Max LeFevre	1243	(609)451-9324	478-5094
Bryan Gorman	1433	(302)455-0220	478-5100
Ross Bell	1239	(609)455-7435	478-5213
RAD PRO-CHEM MGR	(Contact One)		
Terry Cellmer	2830	(609)358-3316	478-5028
John Wray	2659	(302)239-9890	478-5307
Bill Hunkele	2617	(609)455-1583	478-5019
John Trejo	2446	(302)475-9264	478-5011
LICENSING - SPILLS, HAZMAT, OTHERS	(Contact One)		
Jim Eggers	1339	(609)953-9075	573-4655
Pat McCabe	1245	(609)299-1375	573-8459
Don Bowman	1477	(609)547-3795	573-8419
Dave Hurka	1275	(609)299-7433	573-8278
Paul Behrens	1577	(609)691-4766	573-2496
Ed Keating	5430	(609)678-8160	573-4139
ENVIRONMENTAL LICENSING-PROTECTED AQUATIC SPECIES	(Contact One)		
Jim Eggers	1339	(609)953-9075	573-4655
Bob Boot	1169	(302)836-8203	573-3700
Dave Hurka	1275	(609)299-7433	573-8278
Misty Merritt	1565	(302)655-4666	573-3855

SECTION 13

SITE HAZARDS / AIRCRAFT

AIRCRAFT

AIRCRAFT UNUSUAL ACTIVITY OVER FACILITY OR CRASH ON FACILITY

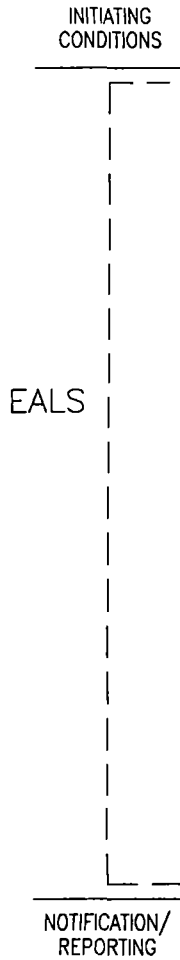


SECTION 13
PAGE INDEX

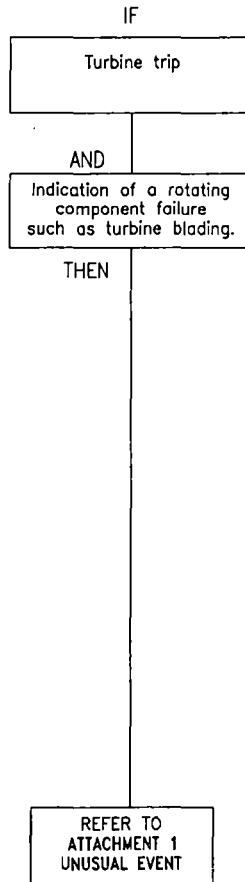
PAGE NO.	TITLE
1	AIRCRAFT
2	TURBINE
3	MISSILE
4	EXPLOSION
5	MAJOR EVENT

CONTROL COPY #
101

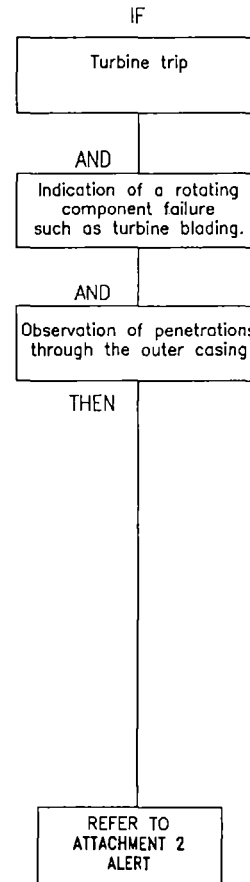
TURBINE ROTATING COMPONENT FAILURE



D. COMPONENT FAILURE



E. WITH CASING PENETRATION



SECTION 13
PAGE INDEX

PAGE NO.	TITLE
1	AIRCRAFT
→ 2	TURBINE
3	MISSILE
4	EXPLOSION
5	MAJOR EVENT

SECTION 13

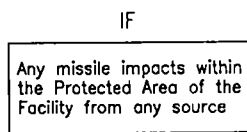
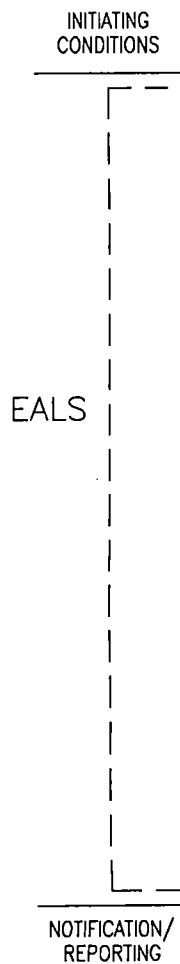
SITE HAZARDS / MISSILES

MISSILE

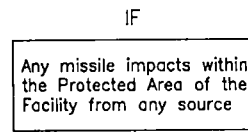
MISSILE IMPACTS ON SITE FROM ANY SOURCE

F. WITHIN PROTECTED AREA

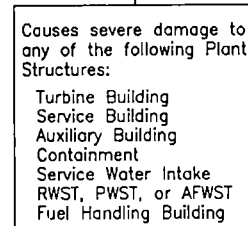
G. DAMAGE TO PLANT STRUCTURE



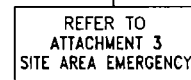
THEN



AND

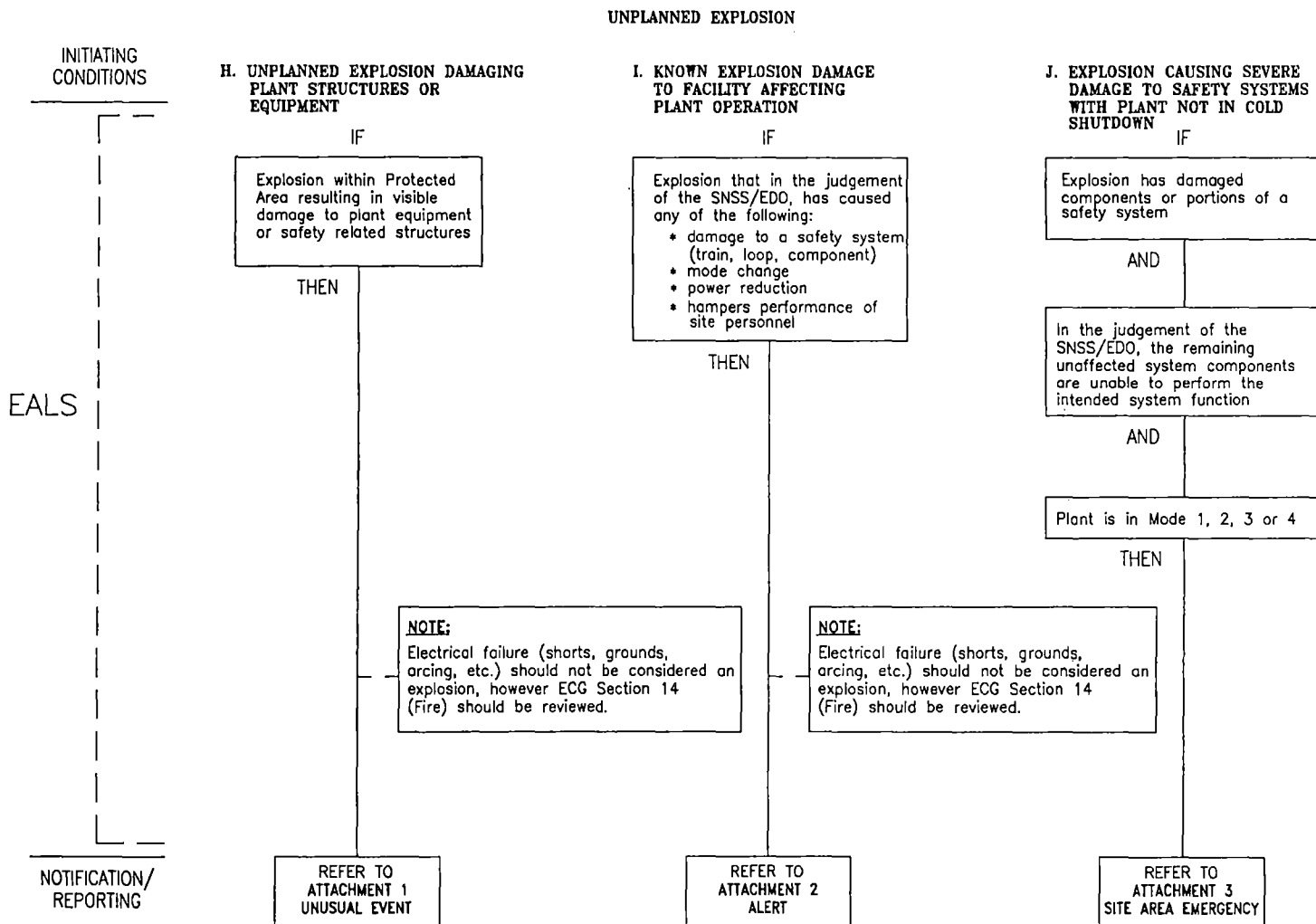


THEN



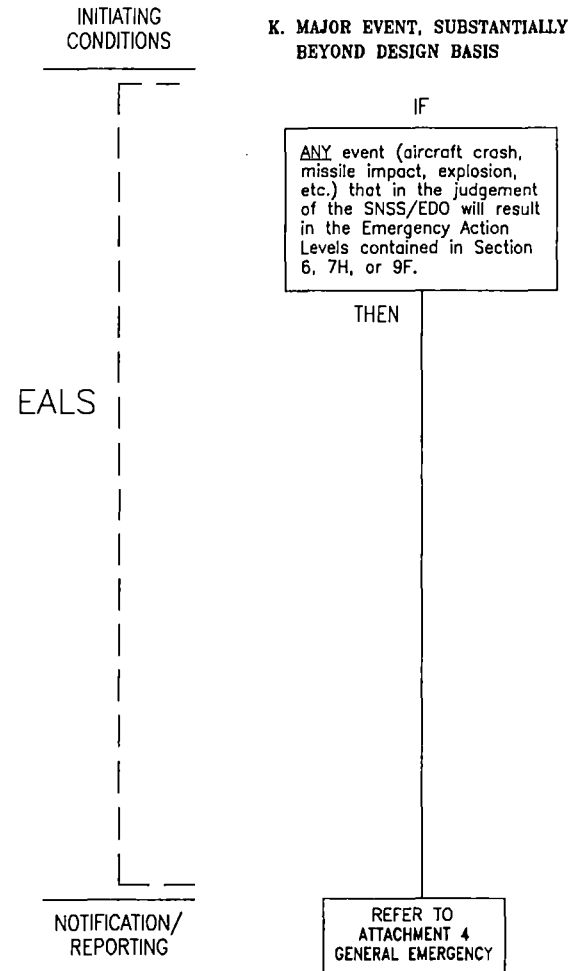
SECTION 13
PAGE INDEX

PAGE NO.	TITLE
1	AIRCRAFT
2	TURBINE
→ 3	MISSILE
4	EXPLOSION
5	MAJOR EVENT



SECTION 13
PAGE INDEX

PAGE NO.	TITLE
1	AIRCRAFT
2	TURBINE
3	MISSILE
4	EXPLOSION
5	MAJOR EVENT

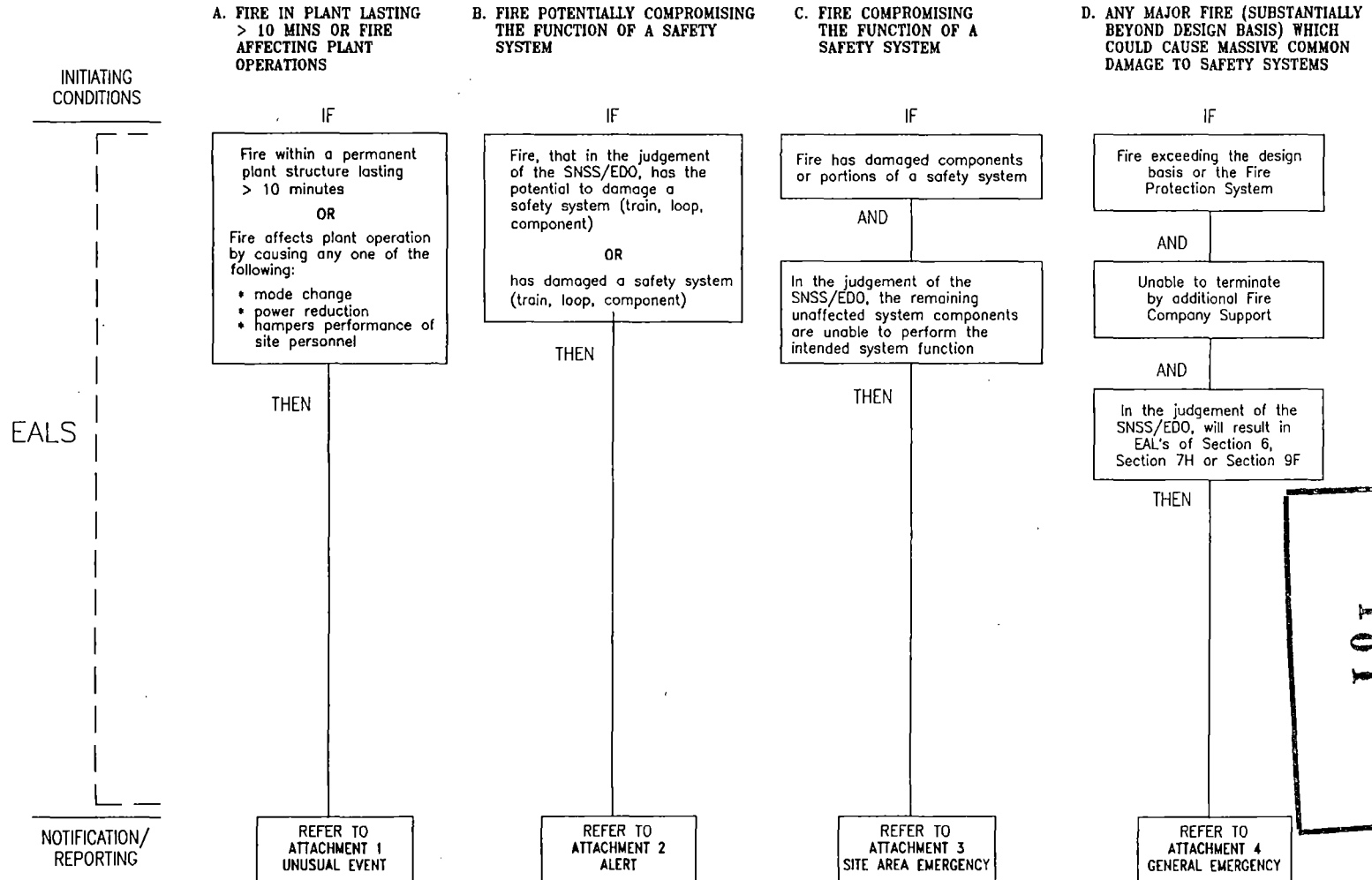


SECTION 13
PAGE INDEX

PAGE NO.	TITLE
1	AIRCRAFT
2	TURBINE
3	MISSILE
4	EXPLOSION
→ 5	MAJOR EVENT

SECTION 14

FIRE



CONTROL COPY #
101

CONTROL COPY #

101

ECG
Sig. Att. 1 - 23
Pg. 1 of 2

**SALEM
EVENT CLASSIFICATION GUIDE
ATTACHMENTS SIGNATURE PAGE**

November 28, 1994

<u>ATTACHMENT</u>	<u>TITLE</u>	<u>REV</u>	<u>PAGES</u>	<u>EFFECTIVE DATE</u>
1.	Unusual Event	14	16	Nov 28, 1994
2.	Alert	7	7	May 21, 1994
3.	Site Area Emergency	7	7	May 21, 1994
4.	General Emergency	6	9	May 21, 1994
5.	Reserved			
6.	CM1 Log (UE/A/SAE)	21	10	Oct 7, 1994
7.	CM1 Log (GE)	20	10	Oct 7, 1994
8.	CM2 Log	13	14	Nov 28, 1994
9.	Non-Emergency Notifications Reference	19	3	Oct 7, 1994
10.	One Hour Report - NRC/Region	1	5	July 27, 1990
11.	One Hour Report - NRC/OPS (Security)	2	5	July 27, 1990
12.	One Hour Report - NRC/OPS	2	5	Apr 26, 1991
13.	Reserved			
14.	Four Hour Report - NRC/OPS	3	5	July 27, 1990
15.	Environmental Protection Plan	3	3	Sept 23, 1991
16.	Spill/Damage Reporting	6	9	Nov 28, 1994
17.	Four Hour Report - Fatality/Medical	3	7	July 27, 1990
18.	Four Hour Report - Transportation Accident	1	6	July 27, 1990
19.	Twenty Four Hour Report - FFD	1	3	Sept 23, 1991
20.	Twenty Four Hour Report - NRC/OPS	2	5	July 27, 1990
21.	Reportable Event - LACT/MOU	0	2	May 26, 1989
22.	Other/Engineering	2	3	Sept 27, 1991
23.	Written Reports/LEERS/Other	3	10	Jan 7, 1994

SIGNATURE PAGE

Prepared By: C. Banner Rev. # 28 11/21/94
(If Editorial Revisions Only, Last Approved Revision) Date

Reviewed By: N/A
Station Qualified Reviewer Date

Reviewed By: N/A
Department Manager Date

Reviewed By: Tom DiGiuseppe 11/22/94
for Emergency Preparedness Manager Date

Reviewed By: N/A
General Manager - Quality Assurance/Safety Review Date
(If Applicable)

SORC Review and Station Approvals

N/A
Mtg. No. Salem Chairman
Date

N/A
Mtg. No. Hope Creek Chairman
Date

N/A
General Manager - Salem
Date

N/A
General Manager - Hope Creek
Date

CONTROL COPY #

101

ECG
Sig. Sec. i-18
Pg. 1 of 2

**SALEM
EVENT CLASSIFICATION GUIDE
SECTION SIGNATURE PAGE**

November 18, 1994

<u>SECTION</u>	<u>TITLE</u>	<u>REV.</u>	<u>PAGES</u>	<u>EFFECTIVE DATES</u>
i.	Introduction	2	6	Jan 7, 1994
ii.	Cross Reference - Event to Requirement	3	12	Nov 18, 1994
iii.	Cross Reference - Attachment to Events	9	1	July 15, 1994
1.	PRIMARY LEAKAGE/SG TUBE LEAKAGE	6	3	July 15, 1994
2.	SECONDARY LEAKAGE	1	1	July 15, 1994
3.	FAILURE TO TRIP/RPS PROBLEMS	1	2	Nov 2, 1990
4.	LOSS OF DECAY HEAT REMOVAL	0	2	May 26, 1989
5.	FUEL DAMAGE/DEGRADED CORE	2	2	July 15, 1994
6.	FISSION PRODUCT BOUNDARY FAILURE	2	1	July 15, 1994
	RADIOLOGICAL RELEASES/OCCURRENCES	4	5	Jan 28, 1994
8.	NON-RADIOACTIVE LEAK/SPILL (toxic gas, oil spill, hazmat)	3	2	Jan 7, 1994
9.	ELECTRICAL POWER FAILURE	3	3	Nov 18, 1994
10.	LOSS OF INSTRUMENTS/ALARMS/COMMUNICATIONS	4	2	Apr 19, 1993
11.	CONTROL ROOM EVACUATION	0	1	May 26, 1989
12.	QUAKE/STORMS (earthquake, wind, floods, etc)	4	6	Jan 7, 1994
13.	SITE HAZARDS (aircraft crash, missiles, explosions, etc.)	1	5	Aug 21, 1992
14.	FIRE	1	1	Aug 21, 1992
15.	PERSONNEL EMERGENCIES/MEDICAL	2	2	Jan 7, 1994
16.	SECURITY EVENTS/FPD	4	3	Sept 23, 1991
17.	PUBLIC INTEREST ITEMS	7	3	July 15, 1994
18.	TECH SPECS/PLANT STATUS CHANGES	9	6	Jan 7, 1994

SIGNATURE PAGE

Prepared By: Craig W. Bowen 11/18/94
(If Editorial Revisions Only, Last Approved Revision) Date

Reviewed By: [Signature] 11/18/94
Station Qualified Reviewer Date

Significant Safety Issue
() Yes (✓) No
Reviewed By: Philip J. O'Donnell 11/18/94
Department Manager Date

Reviewed By: Thomas D. Joseph 11/12/94
Emergency Preparedness Manager Date

Reviewed By: N/A _____
General Manager - Quality Assurance/Safety Review Date
(If Applicable)

SORC Review and Station Approvals

Mtg. No. N/A
Salem Chairman

Date

Mtg. No. N/A
Hope Creek Chairman

Date

[Signature]
General Manager - Salem
11/18/94
Date

N/A
General Manager - Hope Creek

Date