



**DESIGN DOCUMENT
CHANGE NOTICE**

**INITIATING DOC.
TYPE: PIR
NO. 2003-2830**

**DCP/CCP NO N/A
REV.**

| | | | |
|---|--|--------------------|-----------------------|
| ASSIGNED DISCIPLINE: MECHANICAL | DOCUMENT NUMBER 10466-A-1701 | REV. 05 | SEQ. NO. 01 |
| | | PAGE 1 OF 1 | |

OTHER DOCUMENTS AFFECTED BY THIS CHANGE:
10466-A-1702

OTHER DDCN'S REQUIRED TO IMPLEMENT CHANGE:
10466-A-1702-05-01

REASON FOR CHANGE:
Correct Radiation Monitor location discrepancies found in PIR 2003-2830.

DESCRIPTION OF CHANGE:
Drawing 10466-A-1701 shall be revised to remove the incorrectly located SD30 area radiation monitor as shown in the attached markup. Per J-14SD99 and field walkdowns, area radiation monitor SD30 is located in the Hot Instrument Shop and should be shown on drawing 10466-A-1702.

RELEASE AS DDCN FOR REVISION

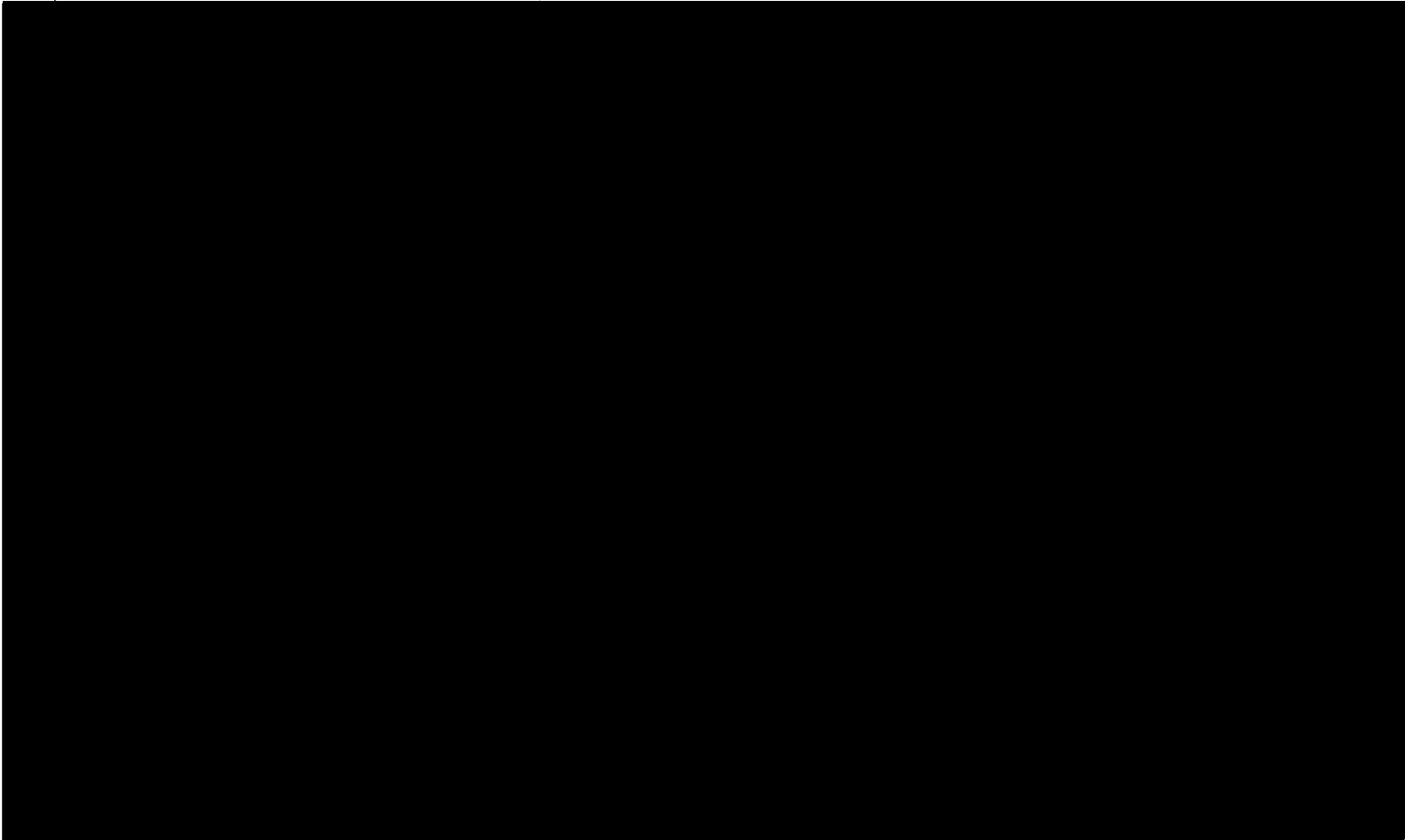
| | | | |
|---------------------------|---------------------------|-------|----------|
| PREPARED BY: | <u>Donald A. Sch. Jr.</u> | DATE: | 11/06/03 |
| DESIGN VERIFIED BY: | <u>Randy Berg</u> | DATE: | 12-18-03 |
| APPROVED BY: | <u>[Signature]</u> | DATE: | 1/6/04 |
| DOCUMENT CONTROL RELEASE: | <u>DC 31</u> | DATE: | 11/7/04 |

INDEXED 2004/01/0

DDCN# 10466-A-1701-05-01

ATTACHMENT 1

PAGE 1 of 1





**DESIGN DOCUMENT
CHANGE NOTICE**

INITIATING DOC.
TYPE: PIR
NO. 2003-2830

DCP/CCP NO N/A
REV.

ASSIGNED DISCIPLINE:

MECHANICAL

DOCUMENT NUMBER

10466-A-1702

REV.

05

SEQ. NO.

01

PAGE 1 OF 1

OTHER DOCUMENTS AFFECTED BY THIS CHANGE:

10466-A-1701

OTHER DDCN'S REQUIRED TO IMPLEMENT CHANGE:

10466-A-1701-05-01

REASON FOR CHANGE:

Correct Radiation Monitor location discrepancies found in PIR 2003-2830.

DESCRIPTION OF CHANGE:

Drawing 10466-A-1702 shall be revised to correctly locate area radiation monitors SD30 & SD47 as shown in the attached markups.

Drawing J-14SD99, Sh. 6, indicates that SD30 is located on the 2000' elevation in room 1334, Hot Instrument Shop. This corresponds to its description in NPIS, MPAC, Spec J-362, and the TPSD. According to the same source, J-14SD99, SD47 is located on the 2000' elevation at 8' east of column line AN and 1' north of column line A5. This puts it in the PASS sampling room. This also corresponds to the descriptions in NPIS, MPAC, Spec J-362, and the TPSD. Both area radiation monitors, SD30 & SD47, should be shown on drawing 10466-A-1702.

RELEASE AS DDCN FOR REVISION

PREPARED BY:

Donald A. Gibson Jr.

DATE: 11/06/03

DESIGN VERIFIED BY:

Randy B...

DATE: 11-18-03

APPROVED BY:

David Jones

DATE: 1/6/04

DOCUMENT CONTROL RELEASE:

DC 31

DATE: 1/7/04

IMAGED 2004/01/09

Attachment 1
DDCN 10466-A-1702-05-01
Page 1 of 2

IMBEC

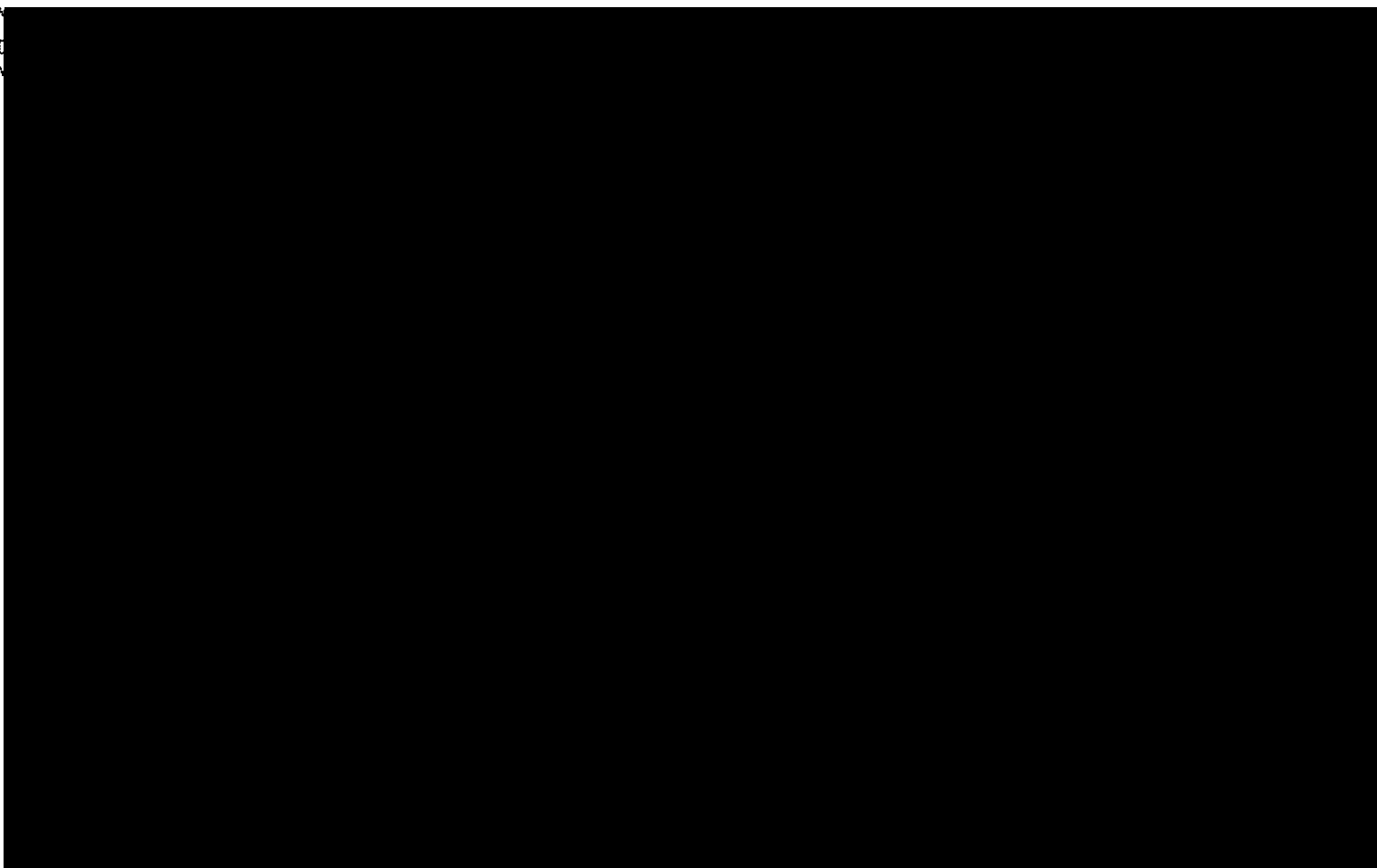
2004/0



Attachment 1
DDCN 10466-A-1702-05-01
Page 2 of 2

IMAGER

2004/01





H
G
F
E
D
C
B
A

NOTES

1. FOR RADIATION SYMBOLS & GENERAL NOTES, SEE DWG NO. A-0701.
2. AREA WILL BE HIGHER ZONE ONLY IF SIGNIFICANT PRIMARY TO SECONDARY STEAM GENERATOR LEAKAGE OCCURS.
3. THE RWST IS EXPECTED TO HAVE A MAXIMUM CONTACT DOSE OF LESS THAN 10 MREM/HOUR WHEN THE WATER IS RETURNED FROM THE REFUELING POOL. THIS WILL BE RAPIDLY REDUCED BY PROCESSING THROUGH THE SPENT FUEL POOL PURIFICATION FILTER DEMINERALIZER.

USAR FIG. 12.3-2-02

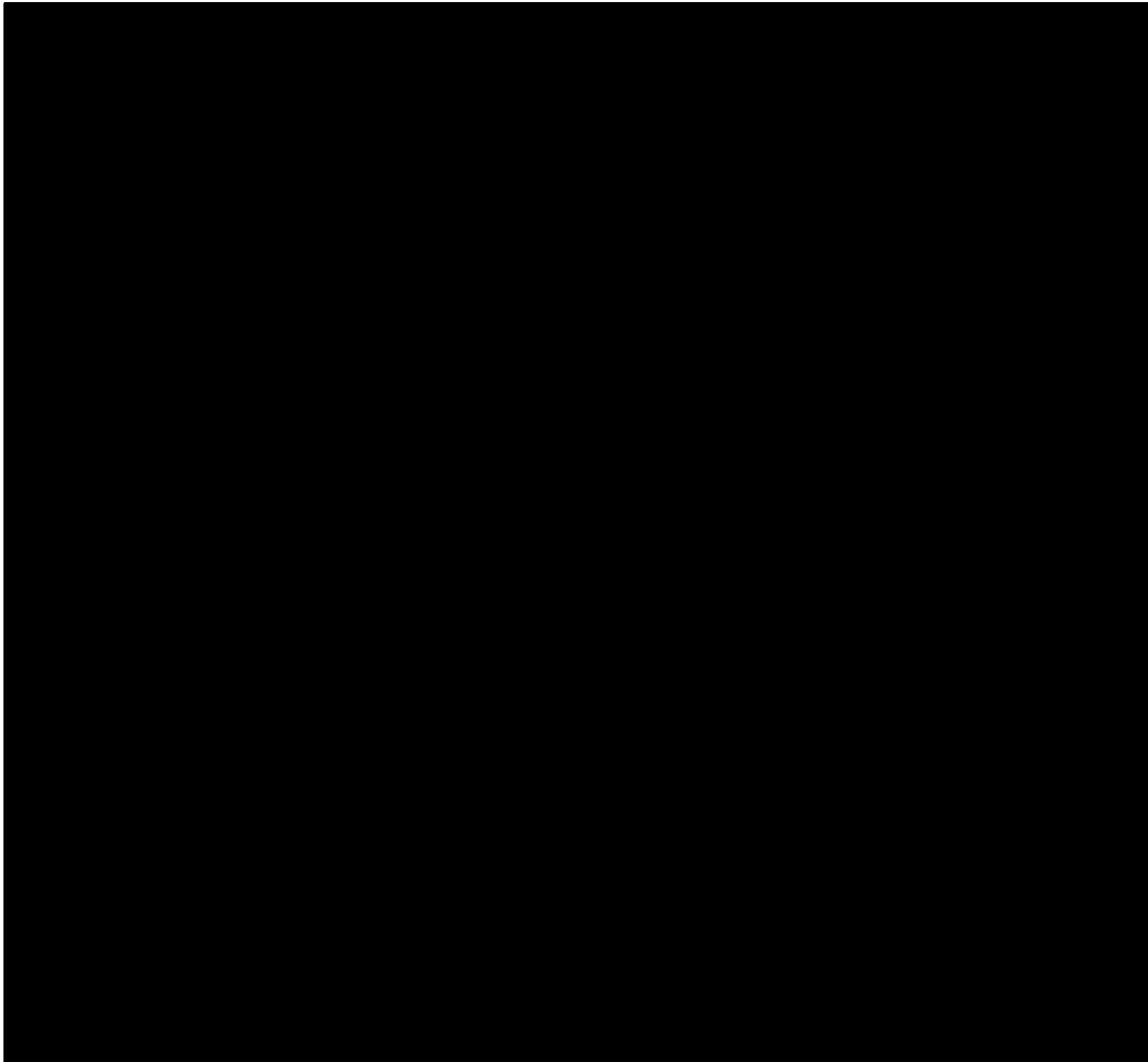
ESSENTIAL DRAWING

| | | | |
|--|--------------------------------------|--|--------------------------------|
| <input type="checkbox"/> REVISION | <input type="checkbox"/> UNCORRECTED | <input type="checkbox"/> CHECKED | <input type="checkbox"/> 01014 |
| <input type="checkbox"/> ISSUED | <input type="checkbox"/> ENG. DES. | <input type="checkbox"/> ENG. VLS | |
| TWO LINES APPROVED BY: <input type="checkbox"/> REL. | | THE ENG. APPROVES: <input type="checkbox"/> REL. | |
| REVISION SHEET | | | |



**RADIATION ZONES
NORMAL OPERATION
EL. 2000'-0"**

| | | |
|--------------|----------------|-----------|
| SCALE | PROJECT NUMBER | SHEET NO. |
| 1/4" = 1'-0" | 10466-A-1702 | 06 |



ATION

5)

Y

5)

BLD6
5726

NOTES

- 1. FOR RADIATION SYMBOLS & GENERAL NOTES, SEE DWG NO. A-0701.
- 2. AREA WILL BE A HIGHER ZONE WHEN SPENT FUEL IS BEING TRANSFERRED IN THE SPENT FUEL POOL CLOSE TO THIS AREA & FROM FUEL SHIPPING CASK DURING WASHINGTON.
- 3. ACTUAL DOSES EXISTING INSIDE CONTAINMENT AT EL. 2026'-0" MAY BE LOWER THAN ZONE E. THE ACTUAL LEVELS SHOULD BE DETERMINED FROM A RADIATION SURVEY.

USAR FIG. 12.3-2-03

ESSENTIAL DRAWING

REVISIONS
 ISSUED
 UNREPRODUCED
 WFO-0466-A-1703-003-A-150/0
 DWG. NO. 03338
 PFC/ML
 THE DWG. APPROVED BY: [Signature] [Signature]
 THE DWG. APPROVED BY: [Signature] [Signature]



ELECTRONIC APPROVAL

RADIATION ZONES-NORMAL OPERATION
EL. 2026'-0"

SCALE: 1/8" = 1'-0"
 DRAWING NUMBER: 10466-A-1703
 SHEET NO.: 04
 SCALE & DATE:

H
G
F
E
D
C
B
A



H
G
F
E
D
C
B
A



NOTES

1. FOR RADIATION SYMBOLS & GENERAL NOTES, SEE DWG NO. A-0701.
2. RADIATION ZONES EXISTING INSIDE CONTAINMENT AT ELEVATIONS (H) 2047'-6" AND (H) 2048'-6" MAY BE LOWER THAN ZONE E & SEVERAL AREAS ARE ESTIMATED TO BE ZONE G. HOWEVER, ACTUAL LEVELS CAN ONLY BE DETERMINED FROM A RADIATION SURVEY. ALL ACCESS TO THE CONTAINMENT WILL BE CONTROLLED.

USAR FIG. 12.3-2-04

ESSENTIAL DRAWING

© REVISED INCORPORATED WFO-10466-A-1704-007-A-1 CHANGE 13248
 0 ISSUED DATE/REV: PAGES

THIS DRAWING IS THE PROPERTY OF WFO. IT IS TO BE USED ONLY FOR THE PROJECT AND NOT TO BE REPRODUCED OR COPIED IN ANY MANNER WITHOUT THE WRITTEN PERMISSION OF WFO.



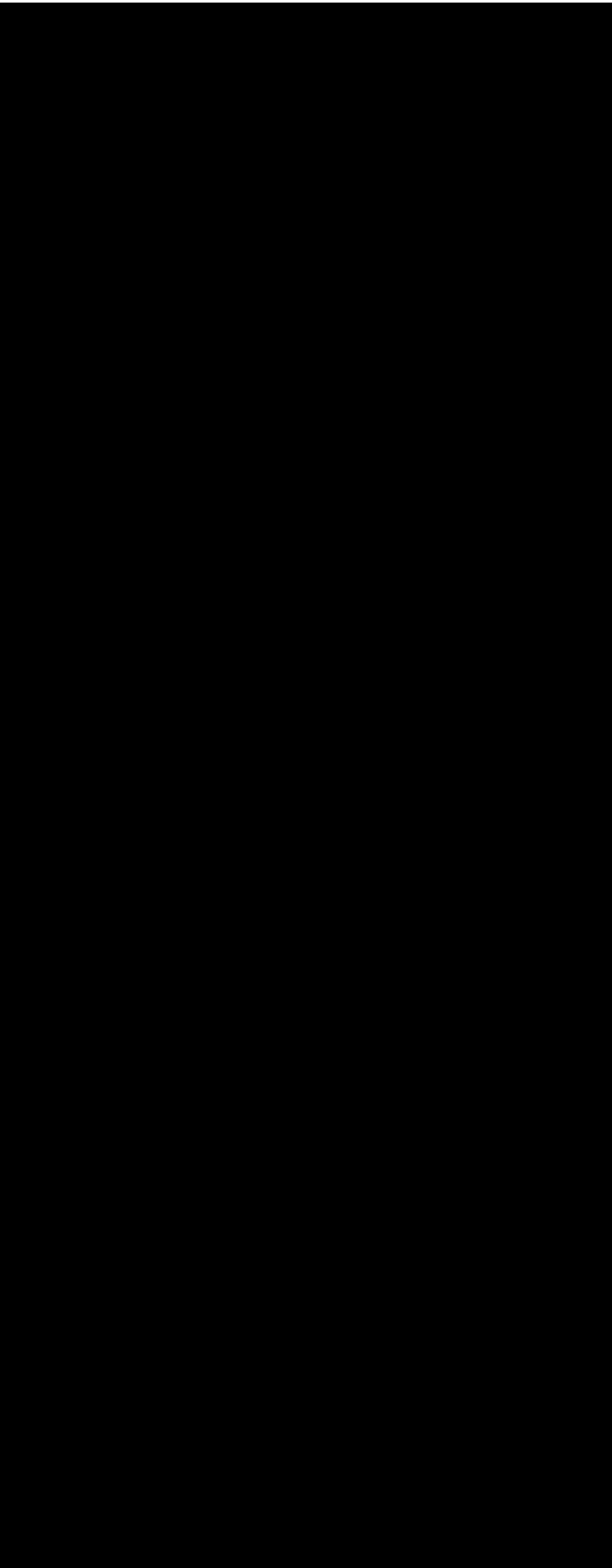
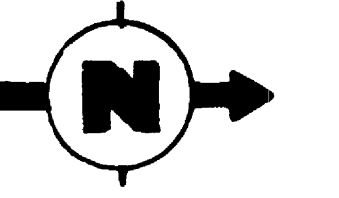
**RADIATION ZONES
 NORMAL OPERATION
 EL. 2047'-6"**

Andy J. Smith
 Lead Designer
 Wolf Creek Consulting, LLC
 2047 E. 10th St., Suite 100
 Fort Collins, CO 80504

SCALE: 1/16"=1'-0" PROJECT: 10466-A-1704
 SHEET NO. 08
 DATE: 10/15/08
 10466-A-1704-08



8 7 6 5 4 3 2 1



H
G
F
E
D
C
B
A

USAR FIG. 12.3-2-06

ESSENTIAL DRAWING

| | | | |
|---|--------------|----------|-------|
| <input checked="" type="checkbox"/> REVISED | INCORPORATED | CHANGE | 09883 |
| <input type="checkbox"/> ISSUED | CHG. DOC. | PKG. NO. | |

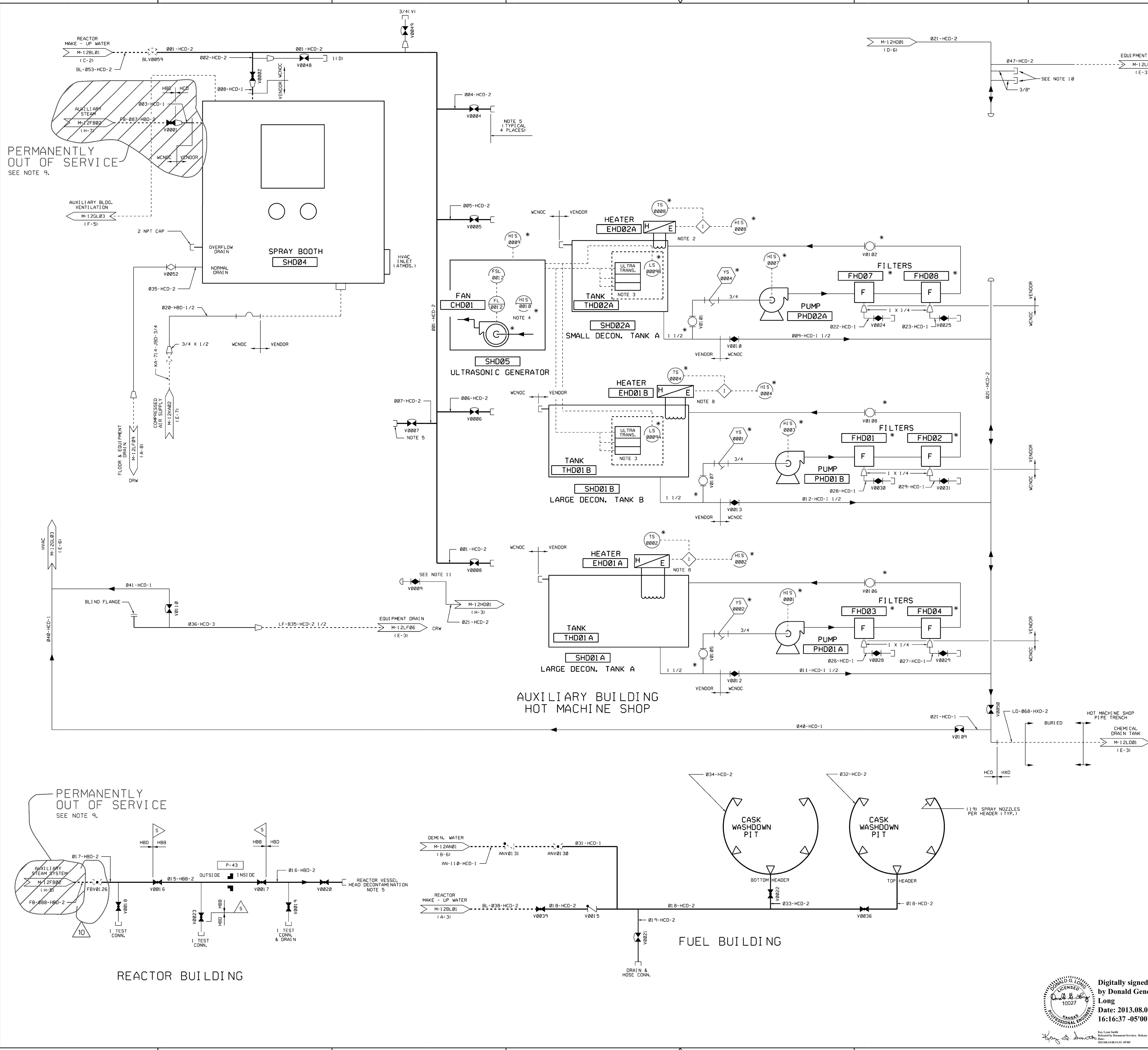
THIS DWG. SUPERSEDES BY: REV. THIS DWG. SUPERSEDES BY: REV.

REVISION NOTES: REVISED TO REFLECT AS BUILT INFORMATION



**RADIATION ZONES FOR NORMAL OPERATION
TURBINE BUILDING
EL.2033'-0" & EL.2065'-0"**

| | | |
|-------------|----------------|-------|
| SCALE | DRAWING NUMBER | SHEET |
| 1/16"=1'-0" | 10466-A-1706 | 05 |



- NOTES**
1. THE ONLY PORTIONS OF THIS SYSTEM WHICH ARE O-LISTED ARE THE PIPING AND VALVES THAT ARE ASSOCIATED WITH THE CONTAINMENT PENETRATION.
 2. 18 KW ELECTRIC IMMERSION HEATER (316L) WITH BUILT-IN THERMOSTAT.
 3. THREE IMMERSIBLE ULTRASONIC TRANSDUCERS WITH SUPPORT RACK (316L), LOW LEVEL SENSOR, AND 50 FT. CABLE.
 4. AIR - COOLED ULTRASONIC GENERATOR WITH REMOTE CONTROL.
 5. HOSE CONNECTION.
 6. DELETED.
 7. DELETED.
 8. 36 KW ELECTRIC IMMERSION HEATER (316L) WITH BUILT-IN THERMOSTAT.
 9. REFERENCE CCP 11146
 10. 3/8" PIPE CONNECTION TO ACCOMMODATE TEST EQUIPMENT.
 11. VALVE HD-V009 LEFT IN SYSTEM TO UTILIZE PIPE SUPPORT

PERMANENTLY OUT OF SERVICE
SEE NOTE 9.

PERMANENTLY OUT OF SERVICE
SEE NOTE 9.

USAR FIG. 12.3-4-00

| ESSENTIAL DRAWING | | | |
|--|----------------|--|----------------------|
| REVISION | INCORPORATED | CR# 0005842-01-01 | CHANGE 014518 |
| ISSUED | CHG. DOC. | | PKG. NO. |
| THIS ENG. SUPERSEDES BY | | REV. | THIS ENG. SUPERSEDES |
| REVISION NOTES | | | |
| | | Digitally signed by Donald Gene Long Date: 2013.08.07 16:16:37 -05'00' | |
| | | ELECTRONIC APPROVAL | |
| PIPING AND INSTRUMENTATION DIAGRAM DECONTAMINATION SYSTEM | | | |
| SCALE | DRAWING NUMBER | SHEET | REV |
| NONE | M-12HD01 | 10 | |

