



Public Service Electric and Gas Company P.O. Box 236 Hancocks Bridge, New Jersey 08038

Nuclear Department

July 18, 1983

Director of Nuclear Reactor Regulation
U. S. Nuclear Regulatory Commission
7920 Norfolk Avenue
Bethesda, Maryland 20014

Attention: Mr. Steven A. Varga, Chief
Operating Reactors Branch 1
Division of Licensing

Gentlemen:

EXEMPTION FOR REQUIREMENT OF A BACKUP
EMERGENCY OPERATIONS FACILITY
NO. 1 AND 2 UNITS
SALEM GENERATING STATION
DOCKET NOS. 50-272 AND 50-311

Information is provided in this letter to supplement previously supplied information in our letters of April 20, 1981 and December 29, 1981 on the design of the Emergency Operations Facility. PSE&G's request for an exemption from the requirement for a backup EOF should include an evaluation of this supplemental information.

PSE&G utilized the guidance available at the time in the design of the permanent EOF to meet the intent of the proposed regulations. A protection factor of 13 from the 0.7 MeV gamma was utilized in the design and was accomplished by reinforcing the roof with 12 inches of concrete and by reinforcing the walls of the EOF with 6 inches of concrete. The EOF is located within the Salem Nuclear Training Center (See Attachment 1).

The ventilation system in the EOF was designed to be isolatable and includes a roughing and HEPA filter for use under emergency conditions to reduce exposure from radioactive particles in the EOF atmosphere. Attachment 2 depicts this system.

8307250449 830718
PDR ADOCK 05000272
F PDR

The Energy People

A045
1/1

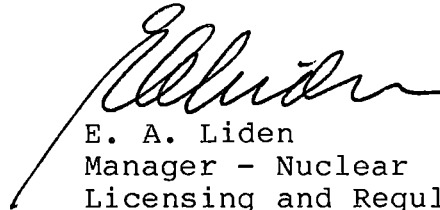
Director of Nuclear Reactor Regulation
U. S. Nuclear Regulatory Commission

- 2-

7/18/83

If you have any questions or need additional information,
please contact us.

Sincerely,



E. A. Liden
Manager - Nuclear
Licensing and Regulation

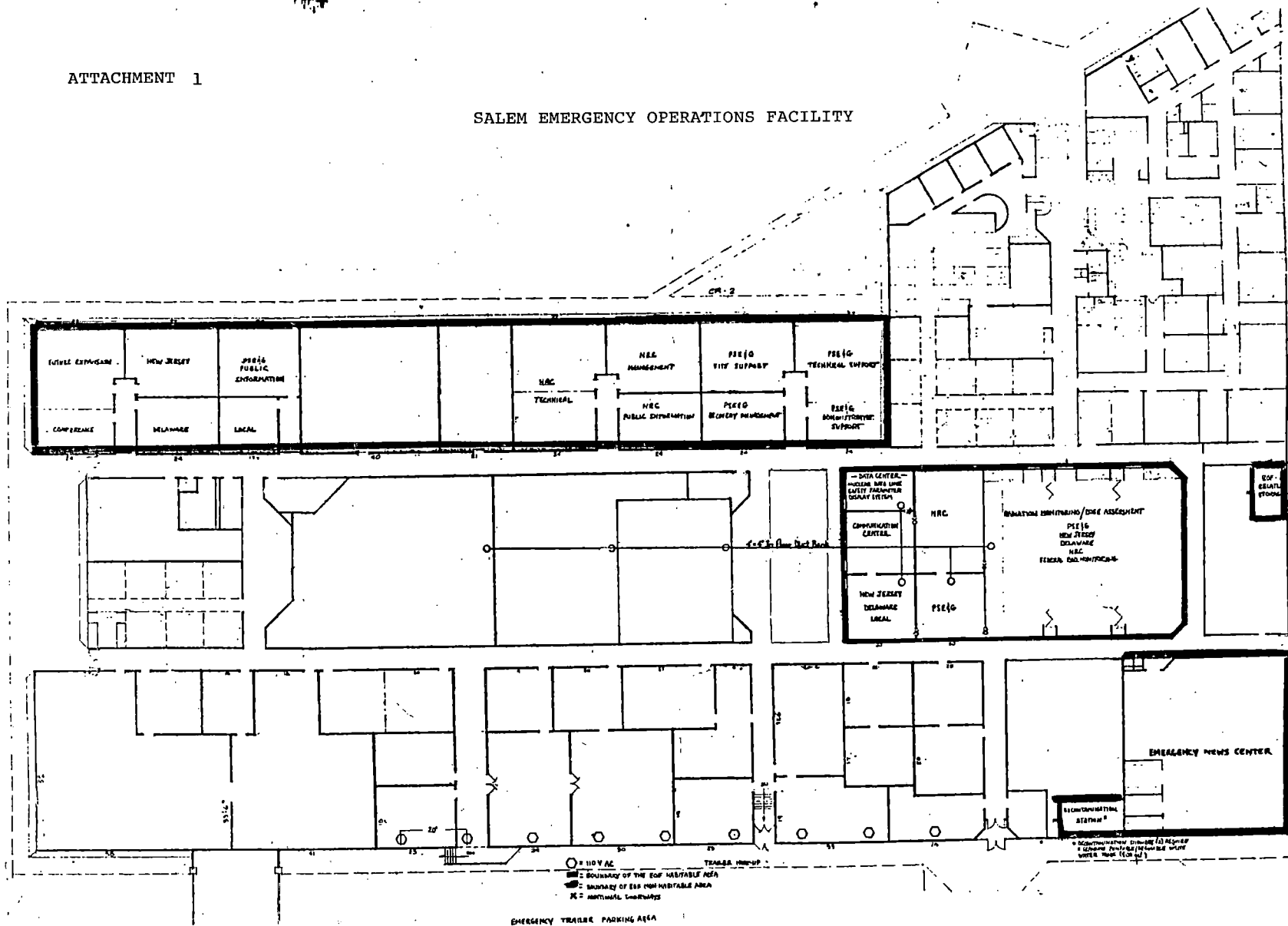
Attachment

CC: Mr. Donald C. Fischer
Licensing Project Manager

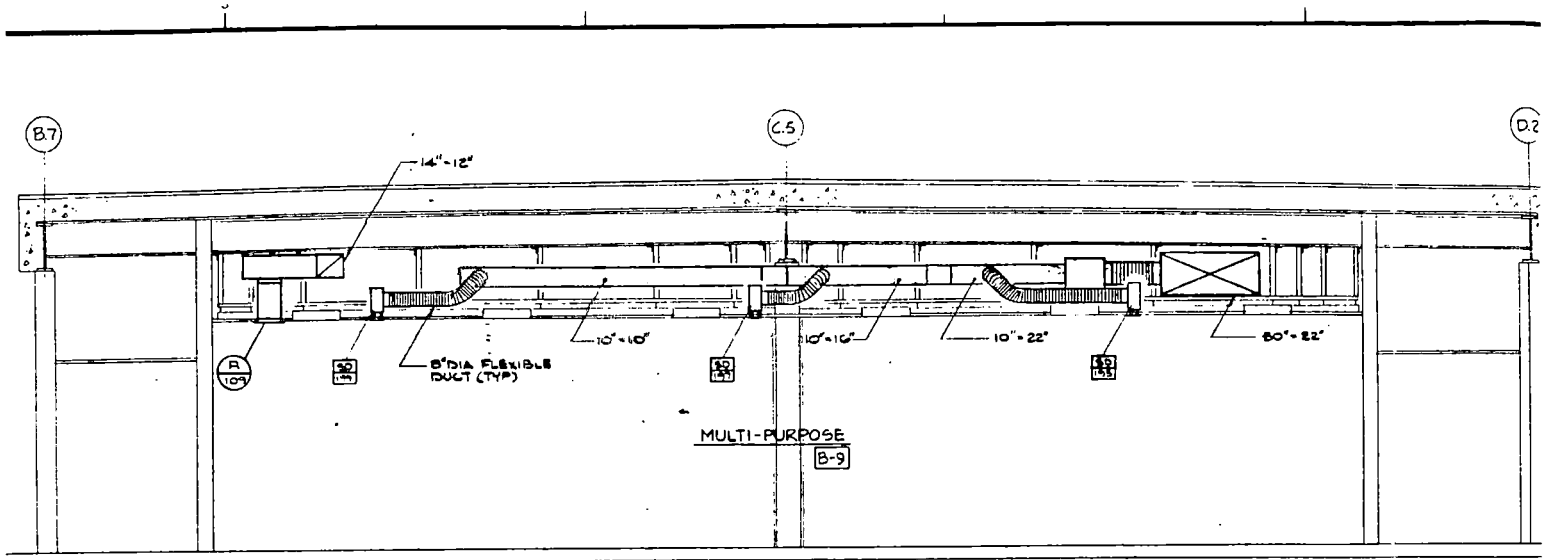
Mr. Leif Norrholm
Senior Resident Inspector

ATTACHMENT 1

SALEM EMERGENCY OPERATIONS FACILITY

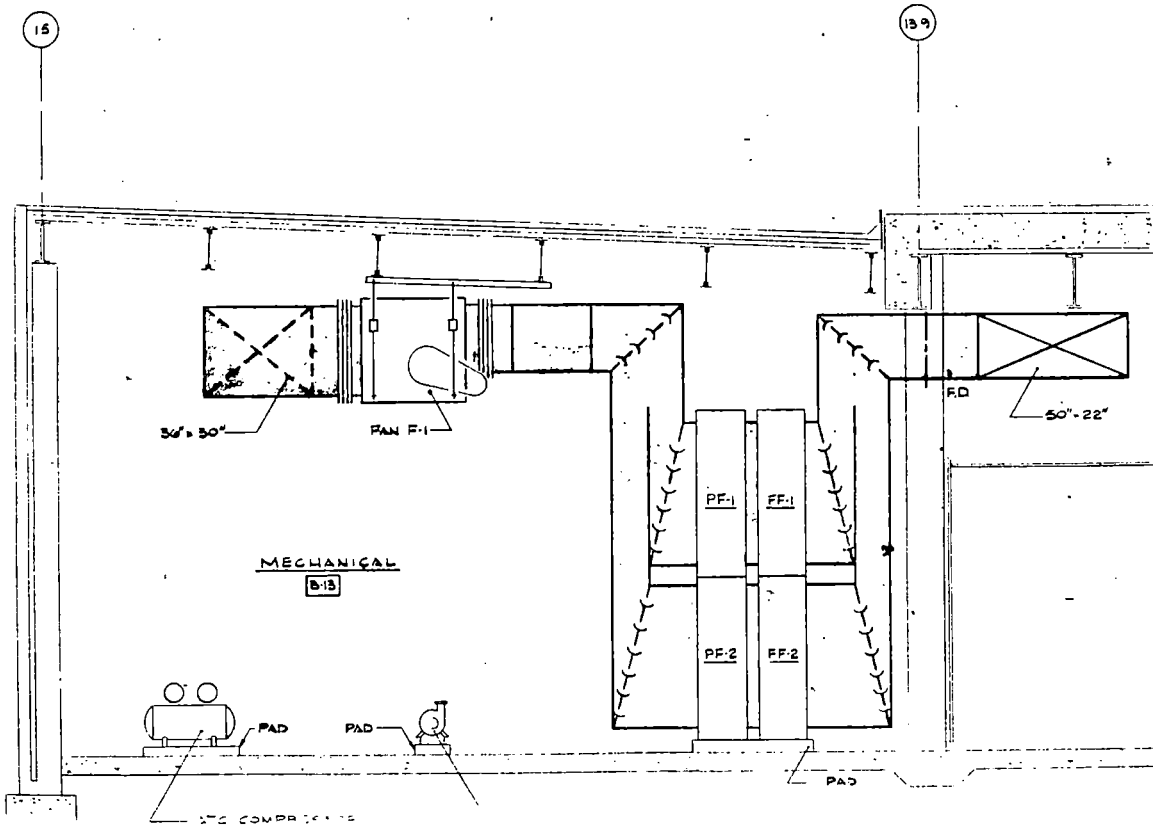


EOF VENTILATION SYSTEM



SECTION
SCALE 1/4"=1'-0"

B
HVAC
2



MECHANICAL
B-13