



PSE&G

Public Service Electric and Gas Company P.O. Box 236 Hancocks Bridge, New Jersey 08038

Nuclear Department

50-272

September 1, 1982

Mr. Brian K. Grimes, Director
Division of Emergency Preparedness
Office of Inspection and Enforcement
U.S. Nuclear Regulatory Commission
Washington, D.C. 20555

Gentlemen:

This letter is to advise you of the change in location of the Salem Generating Station's Emergency Offsite Facility to our Nuclear Training Center, located at 244 Chestnut Street, Salem, New Jersey. A map of the area, noting the training center location, is included as Attachment 1.

The effective date of this transfer is September 7, 1982. Communication lines from the old facility to the new location have been duplicated. A floor plan, noting the location and phone numbers to be used by the PSE&G emergency organization and off-site agencies is included as Attachment 2. Since these are unlisted phone numbers, this list should be kept confidential.

Entrance to the facility will be through the student parking area and access will be permitted by use of a PSE&G, State, or Federal identification card.

The Emergency Plan and Implementing Procedures will be revised to reflect this change, where applicable, and forwarded to you.

Sincerely,

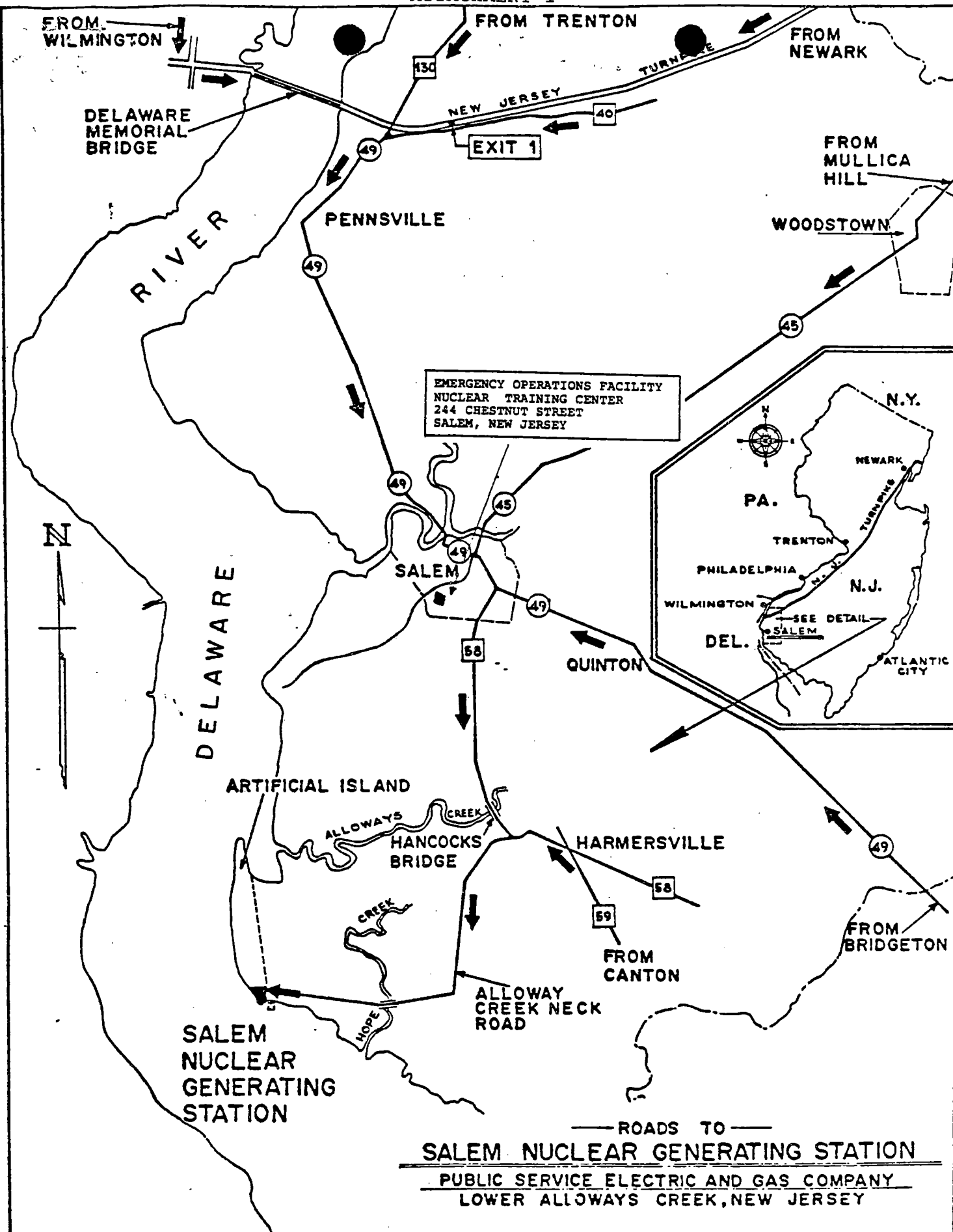
J. M. Zupko, Jr.
General Manager -
Nuclear Services

X005

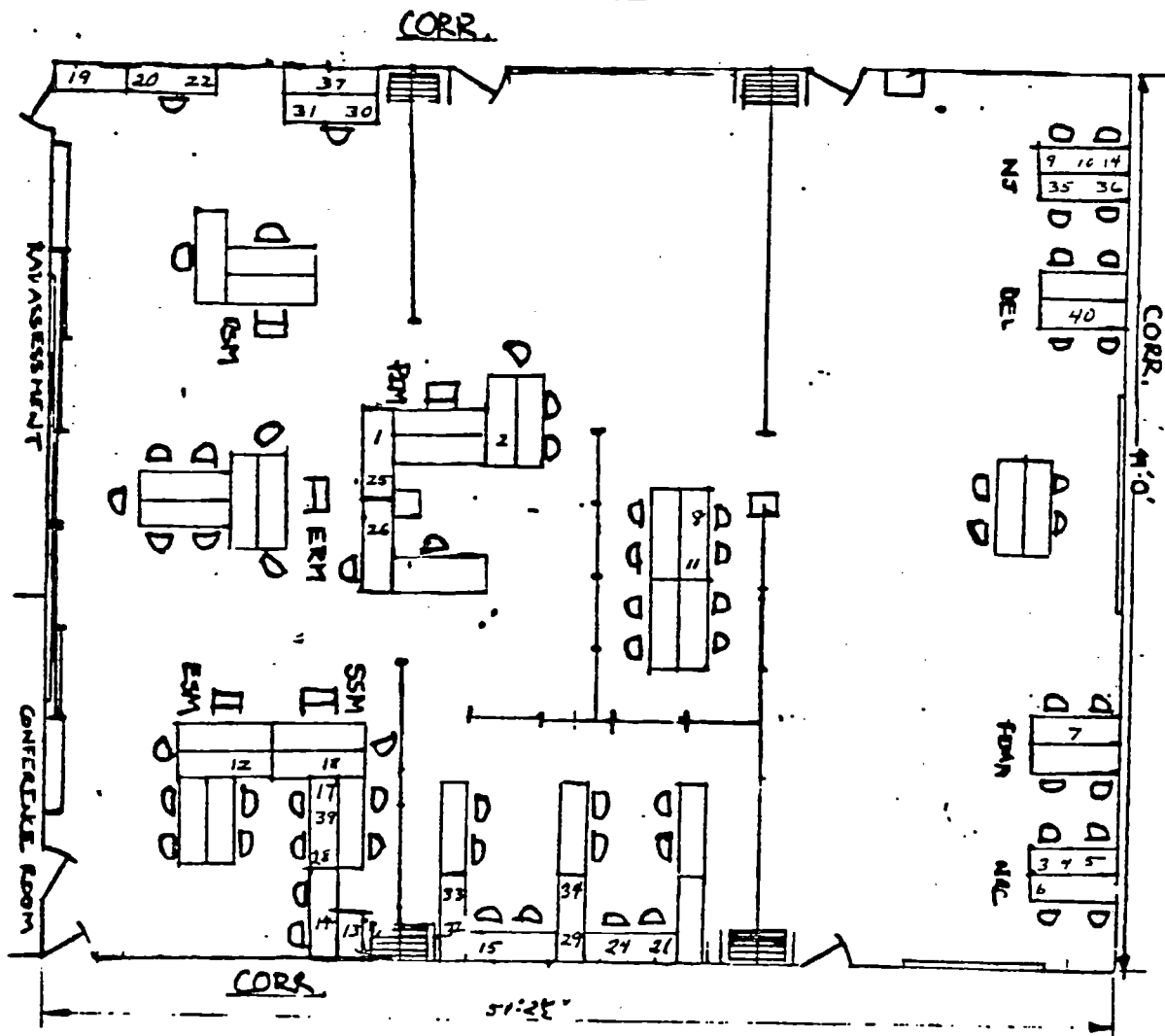
Attachments

8209300111 820716
PDR ADDCK 05000272
F PDR

The Energy People



ATTACHMENT 2
EMERGENCY OFFSITE FACILITY LAYOUT
AT
SALEM NUCLEAR TRAINING CENTER



TEL. LOC.	TEL. NO.		
1		14	NJ STATE POLICE
2		15	
3		16	
4		17	
5		18	
6		19	
7		20	
8		21	
9		22	
10		23	
11		24	
12		25	
13		26	
		28	
		29	
		30	
		31	
		32	
		33	
		34	
		35	
		36	
		37	
		38	
		39	
		40	

EMERGENCY ORGANIZATION POSITIONS

ERM - Emergency Response Manager
SSM - Site Support Manager
ESM - Engineering Support Manager
RSM - Radiological Support Manager