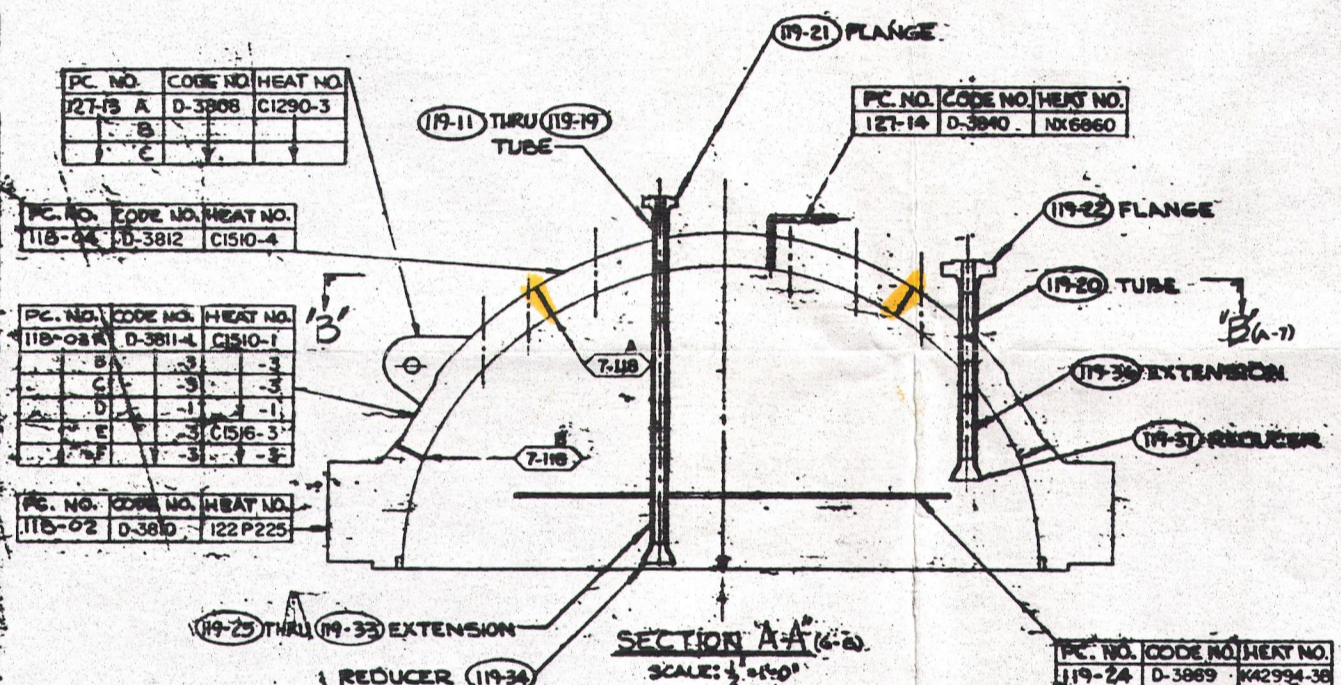


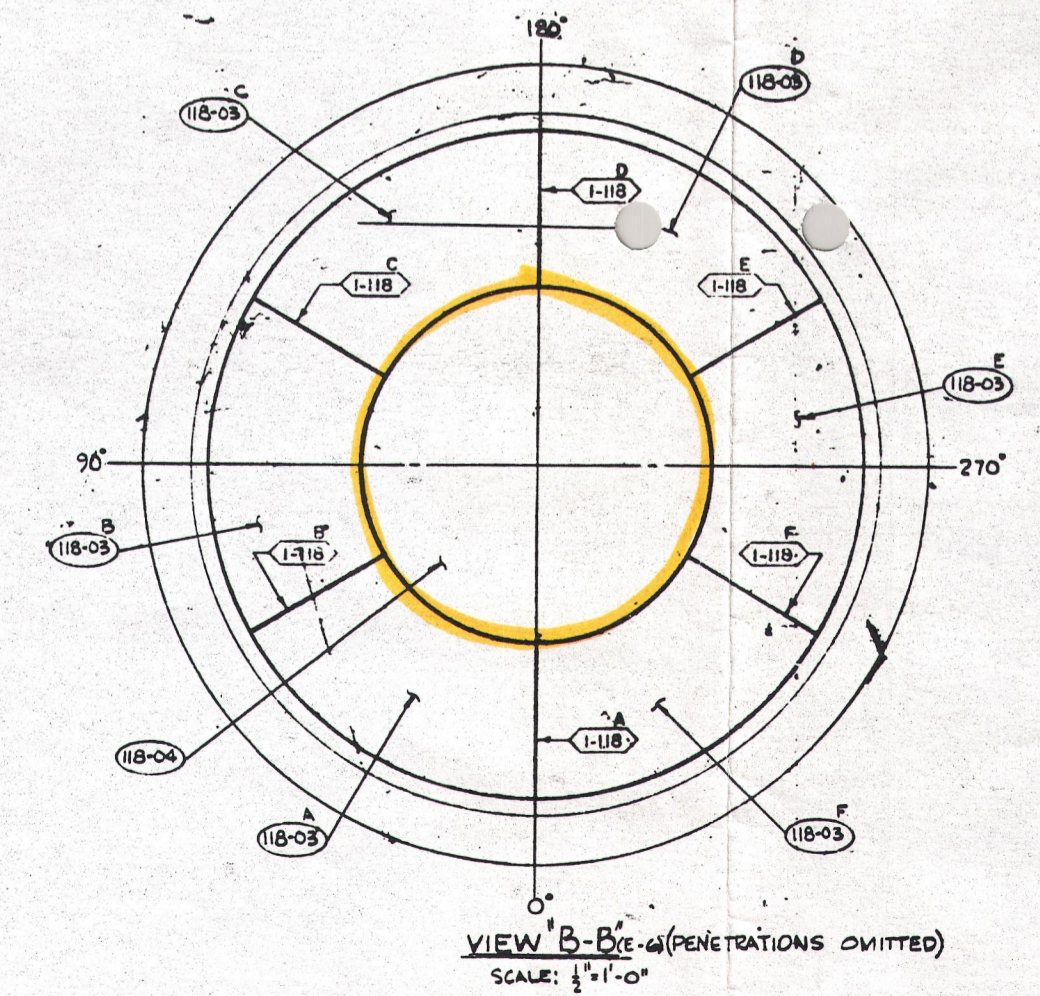
PENET NO.	TUBE PC. NO.	TUBE CODE NO.	TUBE HEAT NO.	F-ANGLE PC. NO.	FLANGE CODE NO.	FLANGE HEAT NO.	EXTENSION PC. NO.	EXTENSION CODE NO.	EXTENSION HEAT NO.	REDUCER PC. NO.	REDUCER CODE NO.	REDUCER HEAT NO.	SHEET NO.
1	119-11	D-3821-1	NX5836	119-21	D-3325-1	137990	119-25	D-3867	2P1833	119-34	D-4013	G668	1
2	119-12						119-26						2
3													3
4													4
5													5
6	119-13						119-27						6
7													7
8													8
9													9
10	119-14						119-28						10
11													11
12													12
13													13
14	119-15						119-29						14
15													15
16													16
17													17
18													18
19													19
20													20
21													21
22	119-16						119-30						22
23													23
24													24
25													25
26	119-17						119-31						26
27													27
28													28
29													29
30	119-18						119-32						30
31													31
32													32
33													33
34													34
35													35
36													36
37													37
38	119-19						119-33						38
39													39
40													40
41													41
42													42
43													43
44													44
45													45
46	119-20	D-3826	NX5668	119-22	D-3827-1	57752	119-36	D-4018	2P1326	119-37	D-4019	G899	46
47													47
48													48
49													49
50													50
51													51
52													52
53													53

ENGINEERING REVISIONS			
SYMBOL	DESCRIPTION	DATE	APPROVED
1	GEN. REVISED & BROUGHT UP TO DATE.	9-18-66	T.H.F.

INSPECTION REVISIONS			
ZONE	DESCRIPTION	DATE	APPROVED
GEN.	ADDED WELD SEAM IDENTIFICATION	9-18-66	



ANSTEC APERTURE CARD



INSPECTION REVISION NO. 1

9509220214

See Relief Request # 8

<p>ALL DIMENSIONS APPLY AT REFERENCE TEMP. OF 65° F. FINISH UNLESS NOTED. TOLERANCE ON: FRACTIONS DECIMALS ANGLES UNLESS NOTED.</p>		<p>OWN BY: J.B. Stewart DATE: 9-18-66 CRD BY: J.B. Stewart DATE: 9-18-66 APPD BY: J.B. Stewart DATE: 9-18-66 STRESS ENG: J.B. Stewart DATE: 9-18-66</p>	<p>COMBUSTION ENGINEERING INC. CHATTANOOGA DIVISION MATERIAL IDENTIFICATION: CLOSURE HEAD FOR CONSUMERS POWER PLANT, D. PWR.</p>																											
<p>REFERENCE DRAWINGS</p> <table border="1"> <tr><th>NO.</th><th>TITLE</th><th>OWG. NO.</th></tr> <tr><td>1.</td><td>CLOSURE HEAD FORMING & WELDING</td><td>E-232-118</td></tr> <tr><td>2.</td><td>CLOSURE HEAD NOZZLE DETAILS</td><td>E-232-119</td></tr> <tr><td>3.</td><td>CLOSURE HEAD ASSEMBLY</td><td>E-232-122</td></tr> <tr><td>4.</td><td>MISCELLANEOUS DETAILS</td><td>E-232-127</td></tr> </table>	NO.	TITLE	OWG. NO.	1.	CLOSURE HEAD FORMING & WELDING	E-232-118	2.	CLOSURE HEAD NOZZLE DETAILS	E-232-119	3.	CLOSURE HEAD ASSEMBLY	E-232-122	4.	MISCELLANEOUS DETAILS	E-232-127	<p>LIST OF MATERIAL - QUANTITIES FOR</p> <table border="1"> <tr><th>ASBY. NO.</th><th>PC. NO.</th><th>REQD.</th><th>NOMENCLATURE</th><th>MATERIAL</th><th>MATERIAL SPEC.</th></tr> <tr><td></td><td></td><td></td><td></td><td></td><td></td></tr> </table>	ASBY. NO.	PC. NO.	REQD.	NOMENCLATURE	MATERIAL	MATERIAL SPEC.							<p>11057578</p> <p>APPROVED: _____ DATE: _____</p> <p>SCALE: 1/2"=1'-0" WEIGHT: _____ SHEET: _____</p> <p>CONTRACT 2966A</p>	<p>E 232-139-1</p>
NO.	TITLE	OWG. NO.																												
1.	CLOSURE HEAD FORMING & WELDING	E-232-118																												
2.	CLOSURE HEAD NOZZLE DETAILS	E-232-119																												
3.	CLOSURE HEAD ASSEMBLY	E-232-122																												
4.	MISCELLANEOUS DETAILS	E-232-127																												
ASBY. NO.	PC. NO.	REQD.	NOMENCLATURE	MATERIAL	MATERIAL SPEC.																									