

CE CONTRACT NO. 2966  
 CE CUSTOMER: CONSUMERS POWER CO.  
 PALISADES PLANT UNIT NO. 1

**PAINT NOTE:**

SANDBLAST & PAINT ONE COAT FORD PAINT & VARNISH CO. 753-2540 ZINC CHROMATE METAL PRIMER 1 TO 1 1/2 MILS DRY FILM THK. WHEN DRY APPLY ON COAT FORD PAINT & VARNISH CO. L00 ALUMINUM 1 1/2 TO 2 MILS DRY FILM THK. DO NOT PAINT 2\"/>

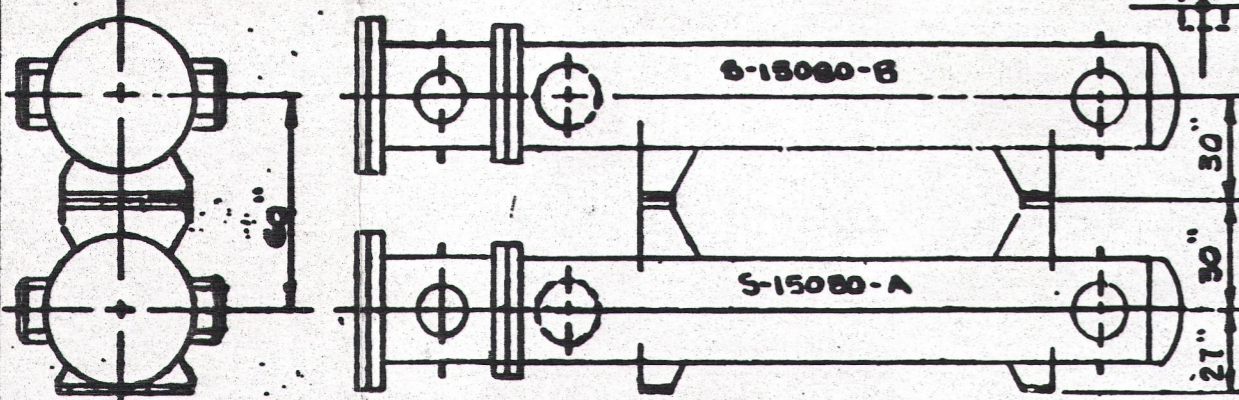
**CERTIFIED FOR CONSTRUCTION**

FEB 20 1968

ENGINEERS & FABRICATORS  
 HOUSTON, TEXAS

MARK	SIZE	SERIES	SERVICE	PROJECTION
N8	1"	3000 S.W. COUP.	DRAIN	26"
N7	1"	3000 S.W. COUP.	VENT	26"
N6	1"	3000 S.W. COUP.	DRAIN	26"
N5	1"	3000 S.W. COUP.	VENT	26"
N4	20"	0.50 WALL PIPE	OUTLET	31"
N3	20"	0.50 WALL PIPE	INLET	31"
N2	10"	0.84 WALL PIPE	OUTLET	31"
N1	10"	0.84 WALL PIPE	INLET	31"

ESTIMATED WEIGHTS	
WT. OF BUNDLE -	25,000 LBS.
WT. FULL H2O -	39,300 LBS.
WT. EMPTY -	33,500 LBS.



STACKING ARRANGEMENT

SUPPLEMENTARY NOTES	DETAIL DRAWINGS	GENERAL NOTES	REVISIONS	ENGINEERS & FABRICATORS INC.
<p>CEU SERIAL NO. 15080-A &amp; B</p> <p>ALL NOZ. PROJECTIONS ARE FROM Q. TO FACE OF FIG. NOZ. TO HAVE 2 - 1/4 S.W. CONN. 1/4 PIPE NIPPLE &amp; CAP AS SHOWN</p>	<p>NP-15080</p> <p>CEU-15080</p> <p>CEU-B-15080</p> <p>TL-15080</p> <p>TB-15080</p> <p>PCD-15080</p> <p>G-15080</p> <p>W-100 (REV'E')</p>	<p>DESIGN CONDITIONS</p> <p>CODE: ASME SECT. III CL. C</p> <p>DESIGN PRESS. 160</p> <p>TEST PRESS. 225</p> <p>AIR TEST 90 PSI/5 HRS</p> <p>DESIGN TEMP. 200</p> <p>NO. OF PASSES ONE</p> <p>CORROSION ALLOW. 1/8"</p> <p>STAMP: YES</p> <p>SHELL 500</p> <p>TUBES 750</p> <p>P. S. I. 4</p> <p>P. S. I. 400</p> <p>2</p> <p>NONE</p> <p>IN.</p>	<p>VOID PREVIOUS PRINTS</p> <p>1-4-68</p> <p>2-16-68</p>	<p>ENGINEERS &amp; FABRICATORS INC.</p> <p>Houston, Texas</p> <p>CUSTOMER: COMBUSTION ENGINEERING, INC.</p> <p>NAME SHUTDOWN COOLING HEAT EXCHANGER</p> <p>SIZE 14-16-5780</p> <p>TYPE: CEU</p> <p>CUST. P. O. NO. 1104722</p> <p>ITEM ONE</p> <p>DATE: 12-5-67</p> <p>JOB# 10457</p> <p>DWG. NO. 00-15080</p>

See Relief Request #7

Also See CLASS 2 ISO B-11

950 Y 279 \* M-I-G D-SH 8-0

9509220210

ANSTEAD APERTURE CARD