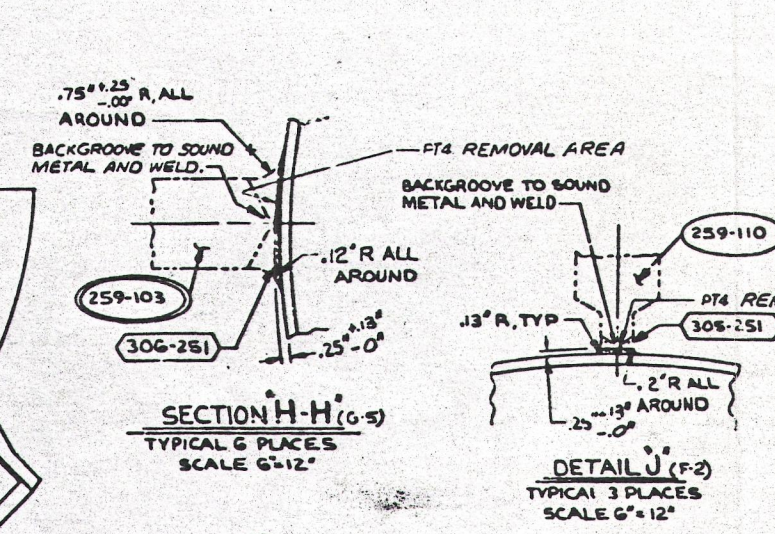
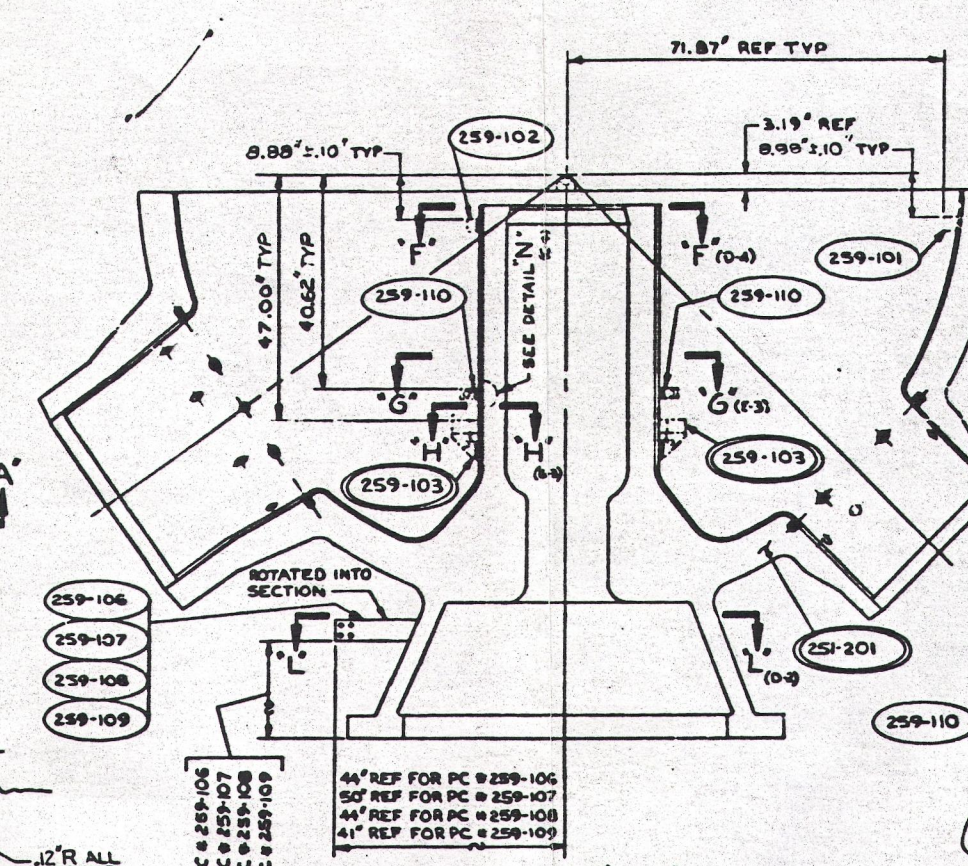
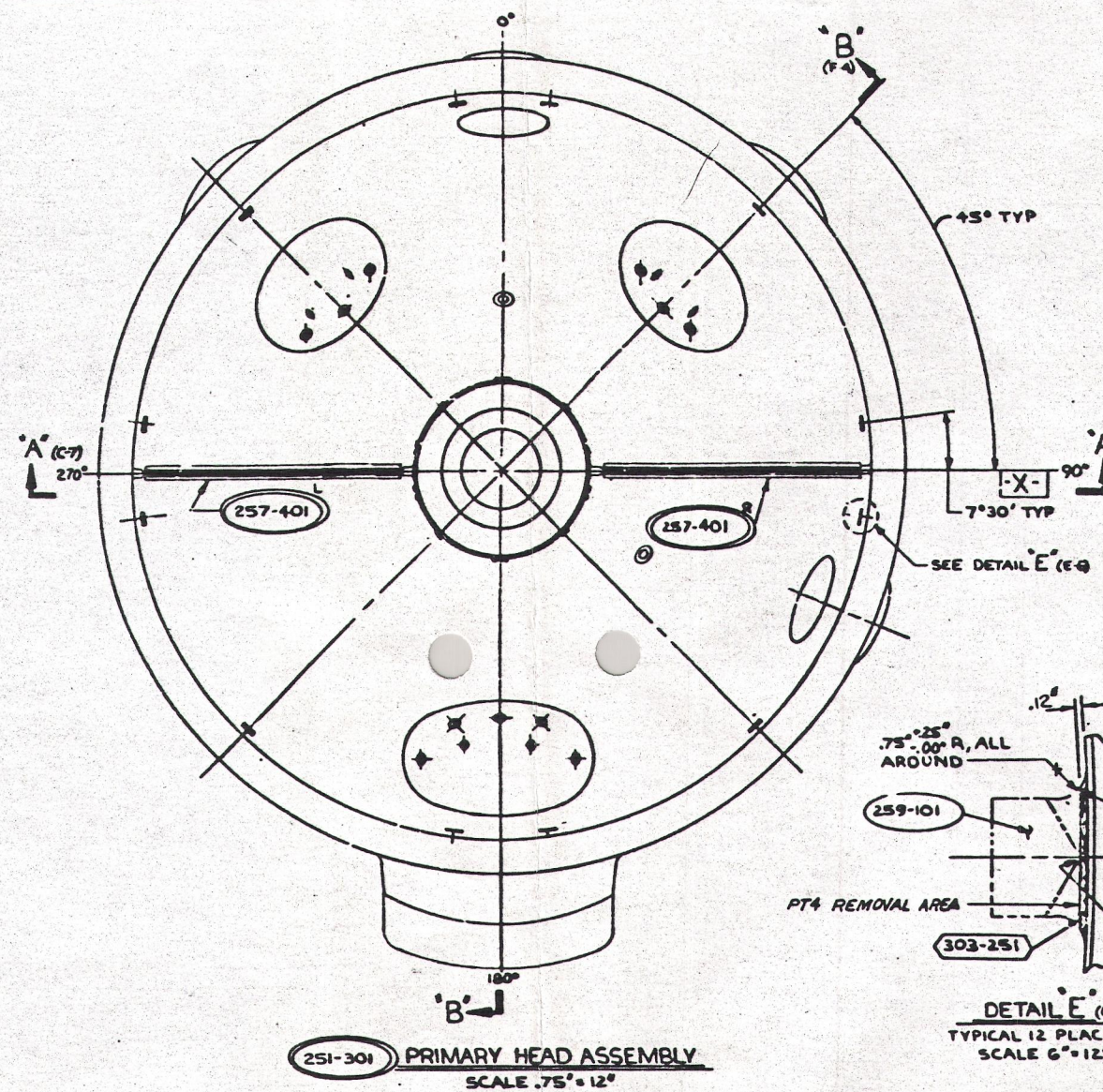
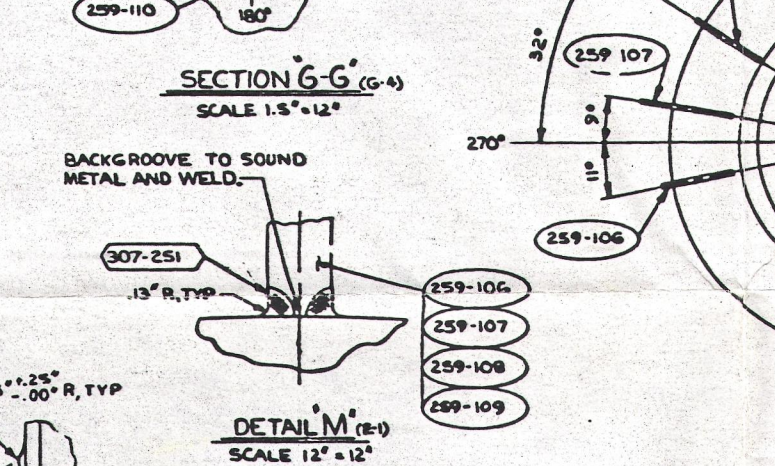
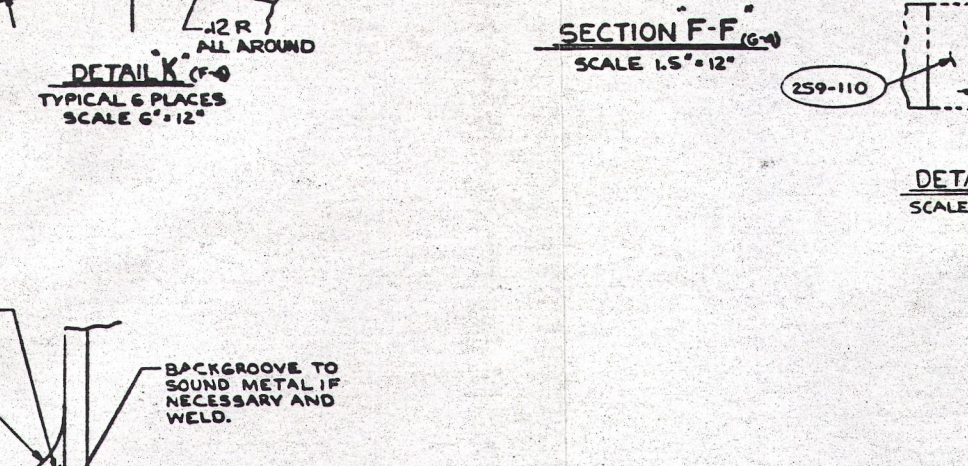
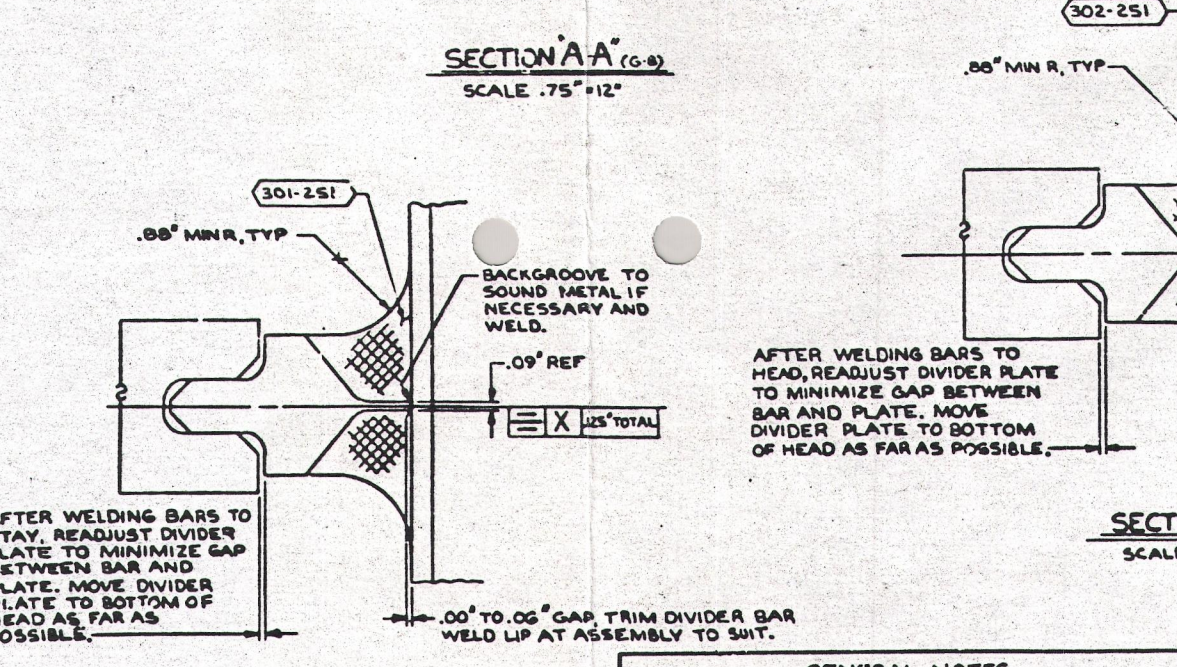
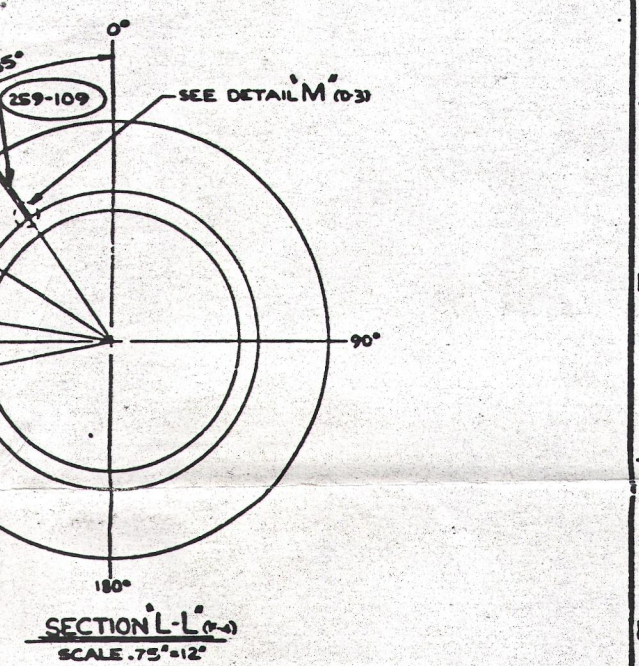
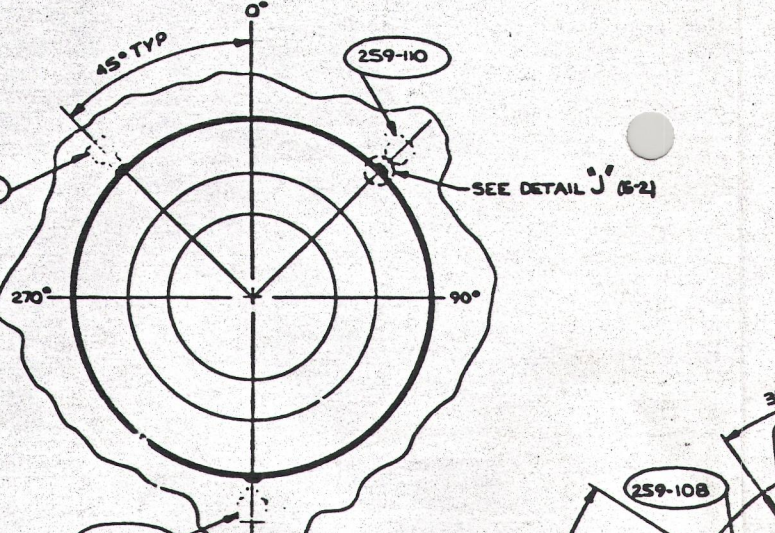
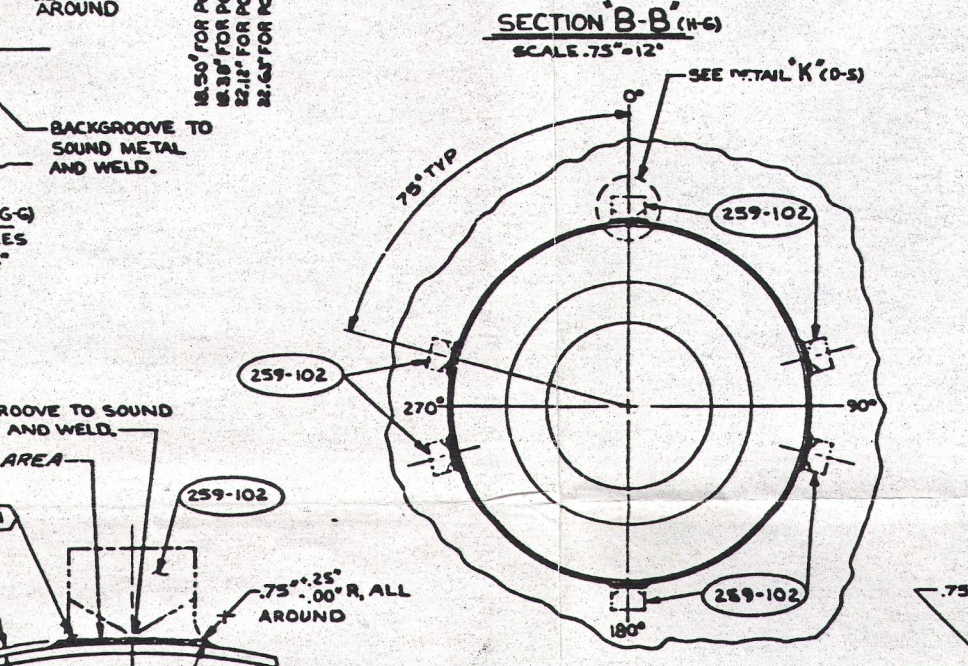
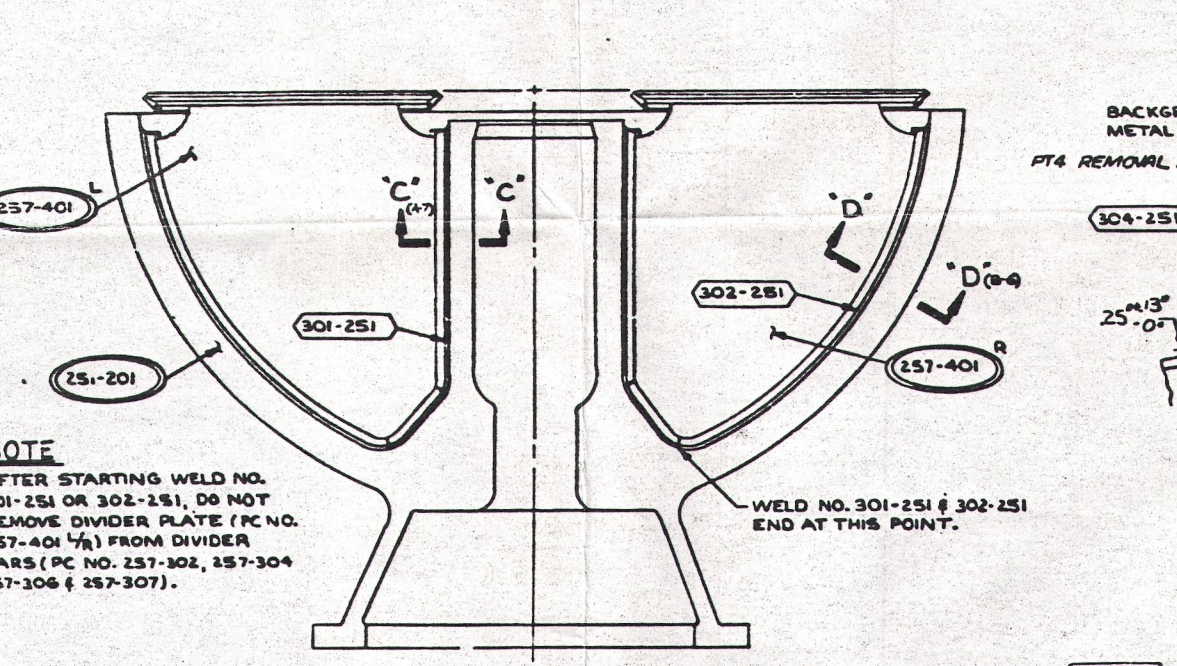


REV	DATE	DESCRIPTION	APPROVED
0A	2/16/70	ISSUED NEW DWG PER 950-91-794 (JKW)	J.P. CORTON



ANSTEC APERTURE CARD

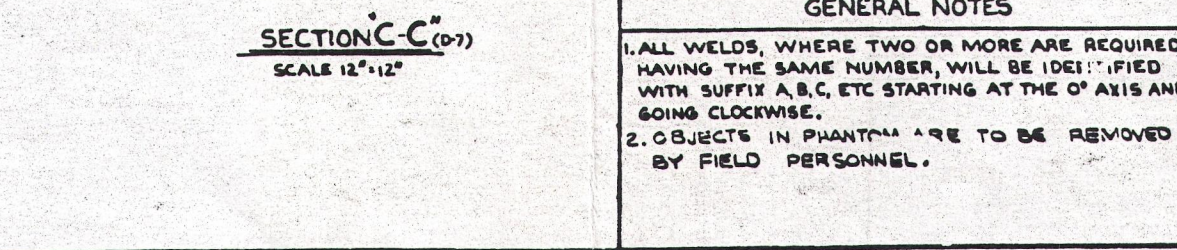


Also see CLASS I ISO A-3  
See Relief Request #4

SA Status Verified  
The safety related design information contained in this document has been reviewed and certification (where applicable) has been obtained from the following:  
ASME (Section I and Section VIII) of the Quality Assurance Procedure Manual. This review is in accordance with ASME Section I, Part UG-110.  
Independent Signature: *J.P. Corton*  
Date: 1-9-70

THIS DRAWING REPLACES  
E 0277-251-003

CERTIFIED FOR  
CONSTRUCTION



WELD NUMBER	S.W.P. NUMBER	NO.	PRD.	NO.	PRD.	NO.	PRD.	NO.	PRD.	WT	WT	WT	WT	WT	WT	WT	WT	WT
307-251	N-DWPS-SMA-1.3-105	2	BC,FF															
306-251	N-DWPS-GTA-SMA-8.43-101	4	BC,FF															
308-251	N-DWPS-GTA-SMA-8.43-101	4	BC,FF															
304-251	N-DWPS-GTA-SMA-8.43-101	4	BC,FF															
303-251	N-DWPS-GTA-SMA-8.43-101	4	BC,FF															
257-251	N-DWPS-GTA-SMA-8.43-101	4	BC,FF															
301-251	N-DWPS-GTA-SMA-8.43-101	4	BC,FF															

NO.	TITLE	DRAWING NO.
1	PROCESS SPECIFICATIONS	8-70277-262-004
2	PRIMARY HEAD ASSEMBLY - UNIT # 1	E-RSG90-C251-001
3	PRIMARY HEAD ASSEMBLY - UNIT # 1	E-70277-251-002
4	PRIMARY HEAD ASSEMBLY - UN # 1	E-70277-251-001
5	DIVIDER PLATE ASSEMBLY	0-70277-251-001
6	PRIMARY HEAD ATTACHMENTS	E-70277-251-001

NO.	DESCRIPTION	QTY	UNIT	REMARKS
259-110	LUG	3		
259-109	LUG	1		
259-106	LUG	1		
259-107	LUG	1		
259-106	LUG	1		
259-102	SUPPORT RING ASSEMBLY	2		
259-102	LUG	6		
259-101	LUG	12		
251-201	PRIMARY HEAD ASSEMBLY	1		
257-401	DIVIDER PLATE ASSEMBLY	1		
257-401	DIVIDER PLATE ASSEMBLY	1		
E-7	251-201	1		PRIMARY HEAD ASSEMBLY, CONSISTING OF:

NO.	DESCRIPTION	QTY	UNIT	REMARKS
1	PRIMARY HEAD ASSEMBLY - UNIT # 1	1		
2	CONSUMERS POWER CO	1		
3	REPLACEMENT STEAM GENERATOR	1		