

ATTACHMENT 1

Consumers Power Company
Palisades Plant
Docket 50-255

PROPOSED TECHNICAL SPECIFICATION
CHANGED PAGES, REVISION 1

September 28, 1990
REVISION 0, September 21, 1988

9010110196 900928
PDR ADOCK 05000255
P PNU

6 Pages

OC0990-0408-NL02

PALISADES PLANT TECHNICAL SPECIFICATIONS
TABLE OF CONTENTS - APPENDIX A

<u>SECTION</u>	<u>DESCRIPTION</u>	
<u>PAGE NO.</u>		
4.0	<u>SURVEILLANCE REQUIREMENTS (Continued)</u>	
4.24.6	Gaseous Waste System	4-91
4.24.7	Solid Radioactive Waste	4-91
4.24.8	Total Dose	4-91
Table 4.24-1	Radioactive Liquid Effluent Monitoring Instrumentation Surveillance Requirements	4-92
Table 4.24-2	Radioactive Gaseous Effluent Monitoring Instrumentation Surveillance Requirements	4-93
Table 4.24-3	Radioactive Liquid Waste Sampling and Analysis Program	4-95
Table 4.24-5	Radioactive Gaseous Waste Sampling and Analysis Program	4-97
5.0	<u>DESIGN FEATURES</u>	5-1
5.1	SITE	5-1
5.2	CONTAINMENT DESIGN FEATURES	5-1
5.2.1	Containment Structures	5-1
5.2.2	Penetrations	5-2
5.2.3	Containment Structure Cooling Systems	5-2
5.3	NUCLEAR STEAM SUPPLY SYSTEM (NSSS)	5-2
5.3.1	Primary Coolant System	5-2
5.3.2	Reactor Core and Control	5-3
5.3.3	Emergency Core Cooling System	5-3
5.4	FUEL STORAGE	5-4
5.4.1	New Fuel Storage	5-4
5.4.2	Spent Fuel Storage	5-4a
Figure 5-1	Site Environment TLD Stations	5-5
6.0	<u>ADMINISTRATIVE CONTROLS</u>	6-1
6.1	RESPONSIBILITY	6-1
6.2	ORGANIZATION	6-1
6.2.1	Offsite and Onsite Organization	6-1 /
6.2.2	Plant Staff	6-1a /
6.2.3	Plant Safety Engineering (PSE)	6-2 /
6.3	PLANT STAFF QUALIFICATIONS	6-3 /
Table 6.2-1	Minimum Shift Crew Composition	6-4
6.4	TRAINING	6-5

ADMINISTRATIVE CONTROLS

6.1 RESPONSIBILITY

- 6.1.1 The Plant General Manager shall be responsible for overall plant operation and shall delegate in writing the succession for this responsibility during his absence.
- 6.1.2 The Shift Supervisor or in his absence from the control room, the second licensed senior operator on duty shall be responsible for the shift command function. A directive to this effect shall be issued annually by the Vice President - Nuclear Operations.

6.2 ORGANIZATION

6.2.1 OFFSITE AND ONSITE ORGANIZATIONS

Onsite and offsite organizations shall be established for plant operation and corporate management, respectively. The onsite and offsite organizations shall include the positions for activities affecting the safety of the plant. /

- a. Lines of authority, responsibility and communication shall be established and defined for the highest management levels through intermediate levels to and including all operating organization positions. These relationships shall be documented, and updated, as appropriate, in the form of organization charts, functional descriptions of departmental responsibilities and relationships, and job descriptions for key positions, or in equivalent forms of documentation. These requirements shall be documented in the FSAR. /
- b. The Plant General Manager shall be responsible for overall plant safe operation and shall have control over those onsite activities necessary for safe operation and maintenance of the plant. /
- c. The Vice President - Nuclear Operations shall have corporate responsibility for overall plant nuclear safety and shall take any measures needed to ensure acceptable performance of the staff in operating, maintaining and providing technical support to the plant to ensure nuclear safety. /
- d. The individuals who train the operating staff and those who carry out health physics and quality assurance functions may report to the appropriate onsite manager; however, they shall have sufficient organizational freedom to ensure their independence from operating pressures. /

6.2.2 PLANT STAFF

- a. Each on-duty shift shall be composed of at least the minimum shift crew composition shown in Table 6.2-1.
- b. At least one licensed Senior Reactor Operator shall be in the control room at all times during conditions other than cold shutdown or refueling. In addition to this Senior Reactor Operator, at least one licensed Reactor Operator or Senior Reactor Operator shall be present at the controls at all times when fuel is in the reactor. /
- c. A Radiation Safety Technician shall be on site when fuel is in the reactor.*
- d. All core alterations, after the initial fuel loading, shall either be performed under the direct supervision of a licensed Senior Reactor Operator or Senior Operator holding a license limited to fuel handling. During this time, no other responsibilities shall be assigned to this individual. /
- e. A Fire Brigade of at least 5 members shall be maintained on site at all times.* The Fire Brigade shall not include 3 members of the minimum shift crew necessary for safe shutdown or any personnel required for other essential functions during a fire emergency.
- f. Administrative procedures shall limit the working hours of Plant staff who perform safety-related functions.

In the event that overtime is used, the following guidelines shall be followed:

- A. An individual shall not be permitted to work more than 16 hours straight (excluding shift turnover time).
- B. An individual shall not be permitted to work more than 16 hours in any 24-hour period, nor more than 24 hours in any 48-hour period, nor more than 72 hours in any seven-day period (all excluding shift turnover time).
- C. A break of at least eight hours shall be allowed between work periods (including shift turnover time).

*The Radiation Safety Technician and the Fire Brigade composition may be less than the minimum requirements for a period of time not to exceed two hours in order to accommodate unexpected absence provided immediate action is taken to restore the minimum requirements.

6.2.2.f PLANT STAFF (Continued)

D. Except during extended shutdown periods the use of overtime should be considered on an individual basis and not for the entire staff on a shift.

Deviations from the overtime guidelines shall be authorized by the Plant General Manager or his Alternate. The basis for granting the deviation shall be documented. Routine deviations are not to be authorized.

Individual overtime will be reviewed monthly by the Plant General Manager or his designee to assure that excessive hours have not been assigned.

ADMINISTRATIVE CONTROLS

6.3 PLANT STAFF QUALIFICATIONS

- 6.3.1 Each member of the plant staff shall meet or exceed the minimum qualifications of ANSI N18.1-1971 for comparable positions.
- 6.3.2 A Radiation Safety Manager shall be designated by the Plant General Manager and shall meet or exceed the qualifications of a Radiation Protection Manager as defined in Regulatory Guide 1.8, September 1975.* The Radiation Safety Manager shall have direct access to the Plant General Manager in the matters of radiation safety. /
- 6.3.3 The Shift Technical Advisor shall have a bachelor's degree or equivalent and the Shift Engineer shall have a bachelor's degree in a scientific or engineering discipline. Specific training for both the Shift Technical Advisor and the Shift Engineer shall include plant design, operations, and response and analysis of the plant for transients and accidents. The Shift Engineer shall hold a Senior Reactor Operator License. /
- 6.3.4 The Plant Safety and Licensing staff who perform the reviews specified in 6.5.3 shall meet or exceed the minimum qualifications of ANS 3.1 - 1987, Section 4.7.1 and 4.7.2. A Senior Reactor Operator License or certification shall be considered equivalent to a bachelors degree for the purpose of this specification for no more than two individuals.
- 6.3.5. Either the Plant Operations Manager or the Plant Operations Superintendent will hold an SRO License and meet the other requirements of Section 6.3.1 of these Technical Specifications (as applicable to Operations Manager in ANSI N18.1). The individual holding the SRO License shall be responsible for directing the activities of the licensed operators. /

*For the purpose of this section, "Equivalent," as utilized in Regulatory Guide 1.8 for the bachelor's degree requirement, may be met with four years of any one or combination of the following: (a) Formal schooling in science or engineering, or (b) operational or technical experience/ training in nuclear power.

ADMINISTRATIVE CONTROLS

6.4 TRAINING

6.4.1 A retraining and replacement training program for the plant staff shall be maintained and shall meet or exceed the requirements and recommendations of Section 5.5 of ANSI N18.1-1971 and 10 CFR Part 55. /

6.4.2 A fire brigade training program shall be maintained and shall, as practicable, meet or exceed the requirements of Section 27 of the NFPA Code-1975. Fire brigade training drills shall be held at least quarterly. /

6.5 REVIEW AND AUDIT

6.5.1 PLANT REVIEW COMMITTEE (PRC)

6.5.1.1 FUNCTION

The Plant Review Committee (PRC) shall function to advise the Plant General Manager on all matters related to nuclear safety.

6.5.1.2 COMPOSITION

The PRC shall be composed of:

Chairman: Technical Engineer or Designated Alternate
Member: Operations Manager*
Member: Engineering and Maintenance Manager*
Member: Radiological Services Manager*
Member: Technical Director*
Member: Reactor Engineering Superintendent
Member: Operations Superintendent
Member: Instrumentation and Control Superintendent
Member: Shift Supervisor or Shift Engineer (1)

*may serve as Designated Alternate for the Chairman.

6.5.1.3 ALTERNATES

Alternate members of the PRC shall be appointed in writing by the PRC Chairman to serve on a temporary basis. No more than two alternates shall participate as voting members at any one time in PRC activities. Members identified with a asterisk (*) above may function as the Designated Alternate for the Chairman, and in so doing, are not considered alternate members for voting purposes.

ATTACHMENT 2

Consumers Power Company
Palisades Plant
Docket 50-255

PROPOSED TECHNICAL SPECIFICATIONS
MARKED UP PAGE CHANGES

September 28, 1990

8 Pages

PALISADES PLANT TECHNICAL SPECIFICATIONS
TABLE OF CONTENTS - APPENDIX A

<u>SECTION</u>	<u>DESCRIPTION</u>	
<u>PAGE NO</u>		
4.0	<u>SURVEILLANCE REQUIREMENTS (Continued)</u>	
4.24.6	Gaseous Waste System	4-91
4.24.7	Solid Radioactive Waste	4-91
4.24.8	Total Dose	4-91
Table 4.24-1	Radioactive Liquid Effluent Monitoring Instrumentation Surveillance Requirements	4-92
Table 4.24-2	Radioactive Gaseous Effluent Monitoring Instrumentation Surveillance Requirements	4-93
Table 4.24-3	Radioactive Liquid Waste Sampling and Analysis Program	4-95
Table 4.24-5	Radioactive Gaseous Waste Sampling and Analysis Program	4-97
5.0	<u>DESIGN FEATURES</u>	5-1
5.1	SITE	5-1
5.2	CONTAINMENT DESIGN FEATURES	5-1
5.2.1	Containment Structures	5-1
5.2.2	Penetrations	5-2
5.2.3	Containment Structure Cooling Systems	5-2
5.3	NUCLEAR STEAM SUPPLY SYSTEM (NSSS)	5-2
5.3.1	Primary Coolant System	5-2
5.3.2	Reactor Core and Control	5-3
5.3.3	Emergency Core Cooling System	5-3
5.4	FUEL STORAGE	5-4
5.4.1	New Fuel Storage	5-4
5.4.2	Spent Fuel Storage	5-4a
Figure 5-1	Site Environment TLD Stations	5-5
6.0	<u>ADMINISTRATIVE CONTROLS</u>	6-1
6.1	RESPONSIBILITY	6-1
6.2	ORGANIZATION	6-1
6.2.1	Offsite and Onsite Organizations	6-1
6.2.2	Plant Staff	6-2
6.3	PLANT STAFF QUALIFICATIONS	6-3
Table 6.2-1	Minimum Shift Crew Composition	6-4
6.4	TRAINING	6-5

ADMINISTRATIVE CONTROLS

6.1 RESPONSIBILITY

- 6.1.1 The Plant General Manager shall be responsible for overall plant operation and shall delegate in writing the succession for this responsibility during his absence.
- 6.1.2 The Shift Supervisor or in his absence from the control room, the second licensed senior operator on duty shall be responsible for the shift command function. A directive to this effect shall be issued annually by the Vice President - Nuclear Operations.

6.2 ORGANIZATION

6.2.1 OFFSITE AND ONSITE ORGANIZATIONS

~~The offsite organization for plant management and technical support shall be as shown in Figure 6.2-1.~~ See proposed page 6-1 in attachment 1.

6.2.2 PLANT STAFF

~~The plant organization shall be as shown in Figure 6.2-2 and:~~

- a. Each on-duty shift shall be composed of at least the minimum shift crew composition shown in Table 6.2-1.
- b. At least one ^{Reactor} licensed senior operator shall be in the control room at all times during conditions other than cold shutdown or refueling. In addition to this ^{Reactor} senior operator, at least one licensed operator or ^{Reactor} senior operator shall be present at the controls at all times when fuel is in the reactor.
- c. A radiation safety technician shall be on site when fuel is in the reactor.*
- d. All core alterations, after the initial fuel loading, shall either be performed under the direct supervision of a licensed ^{Reactor} Senior Operator or Senior Operator holding a license limited to fuel handling. During this time no other responsibilities shall be assigned to this individual.
- e. A Fire Brigade of at least 5 members shall be maintained on site at all times.* The Fire Brigade shall not include 3 members of the minimum shift crew necessary for safe shutdown or any personnel required for other essential functions during a fire emergency.

*The radiation safety technician and the Fire Brigade composition may be less than the minimum requirements for a period of time not to exceed two hours in order to accommodate unexpected absence provided immediate action is taken to restore the minimum requirements.

ADMINISTRATIVE CONTROLS

6.2.2 PLANT STAFF (Continued)

- f. Administrative procedures shall limit the working hours of Plant staff who perform safety-related functions.

In the event that overtime is used, the following guidelines shall be followed:

- A. An individual shall not be permitted to work more than 16 hours straight (excluding shift turnover time).
- B. An individual shall not be permitted to work more than 16 hours in any 24-hour period, nor more than 24 hours in any 48-hour period, nor more than 72 hours in any seven-day period (all excluding shift turnover time).
- C. A break of at least eight hours shall be allowed between work periods (including shift turnover time).
- D. Except during extended shutdown periods the use of overtime should be considered on an individual basis and not for the entire staff on a shift.

Deviations from the overtime guidelines shall be authorized by the Plant General Manager or his Alternate. The basis for granting the deviation shall be documented. Routine deviations are not to be authorized.

Individual overtime will be reviewed monthly by the Plant General Manager or his designee to assure that excessive hours have not been assigned.

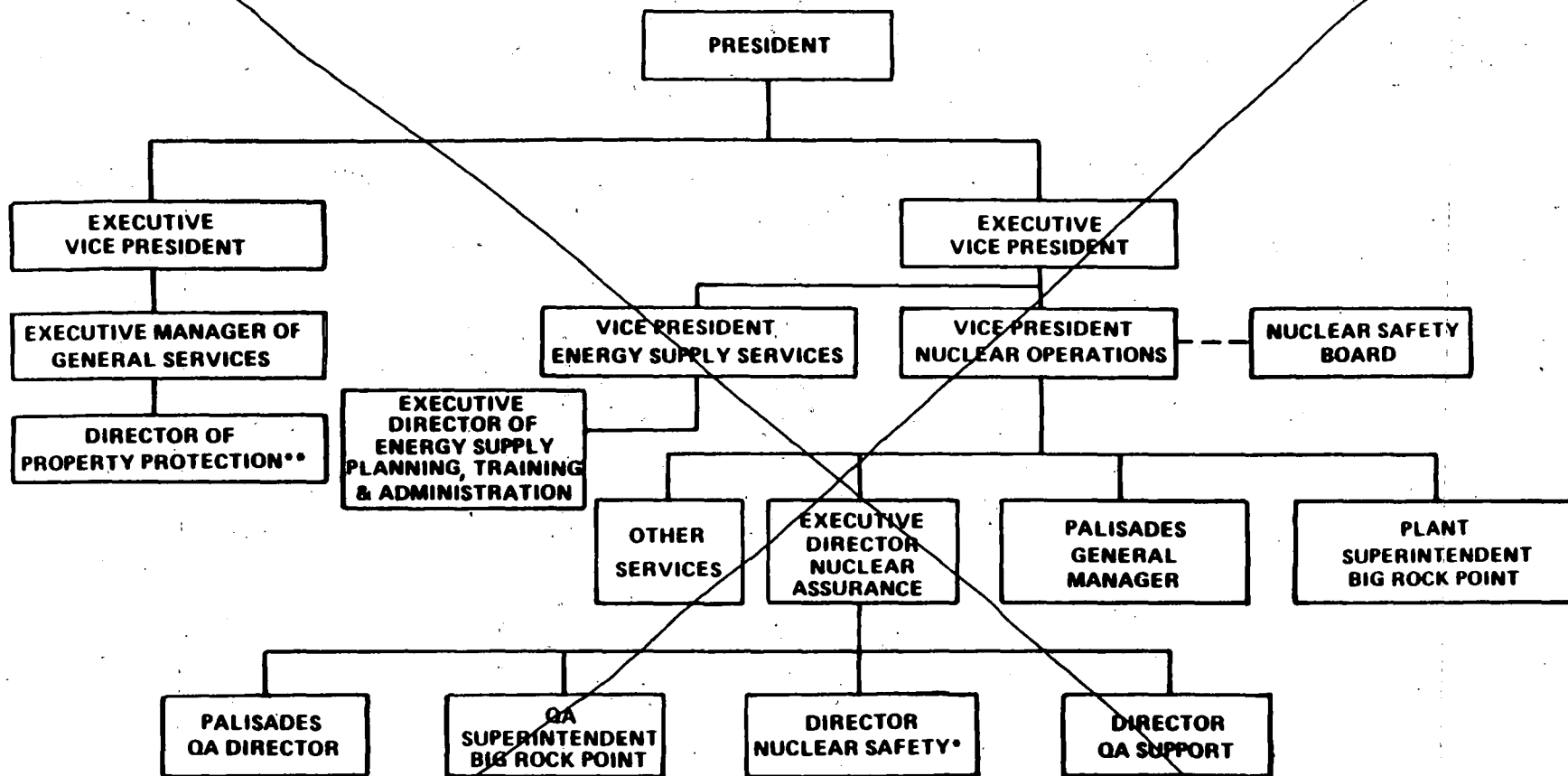
6.2.3 (DELETED)

~~6-1a~~ 6-2

α 6-2a

Amendment No. 73, 108, 127
~~August 16, 1989~~

**CONSUMERS POWER COMPANY
OFFSITE ORGANIZATION**



* NSB CHAIRMAN

** RESPONSIBLE FOR OVERALL FIRE PROTECTION PROGRAM

FIGURE 6.2-1

Amendment No. 37, 75, 108
October 21, 1987

ADMINISTRATIVE CONTROLS

~~6.2.3.2 (Continued)~~

~~(DELETED)~~

A Radiation Safety Manager shall be designated by the Plant General Manager and shall meet or exceed the qualifications of a Radiation Protection Manager as defined in Regulatory Guide 1.8 September 1975.* The Radiation Safety Manager shall have direct access to the Plant General Manager in the matters of radiation safety.

6.3

PLANT STAFF QUALIFICATIONS

6.3.1

Each member of the plant staff shall meet or exceed the minimum qualifications of ANSI N18.1-1971 for comparable positions.

6.3.2

~~The Plant Health Physics Superintendent shall meet or exceed the qualifications of Regulatory Guide 1.8, September 1975.*~~

6.3.3

The Shift Technical Advisor shall have a bachelor's degree or equivalent and the Shift Engineer shall have a bachelor's degree in a scientific or engineering discipline, with specific training in plant design, ~~and~~ reactor operations, and response and analysis of the plant for transients and accidents. The Shift Engineer shall hold a Senior Operator License.

6.3.4

The Plant Safety and Licensing staff who perform the reviews specified in 6.5.3 shall meet or exceed the minimum qualifications of ANS 3.1 - 1987, Section 4.7.1 and 4.7.2. A Senior Reactor Operator License or certification shall be considered equivalent to a bachelors degree for the purpose of this specification for no more than two individuals.

for both the Shift Technical Advisor and the shift engineer shall include

Added

6.3.5

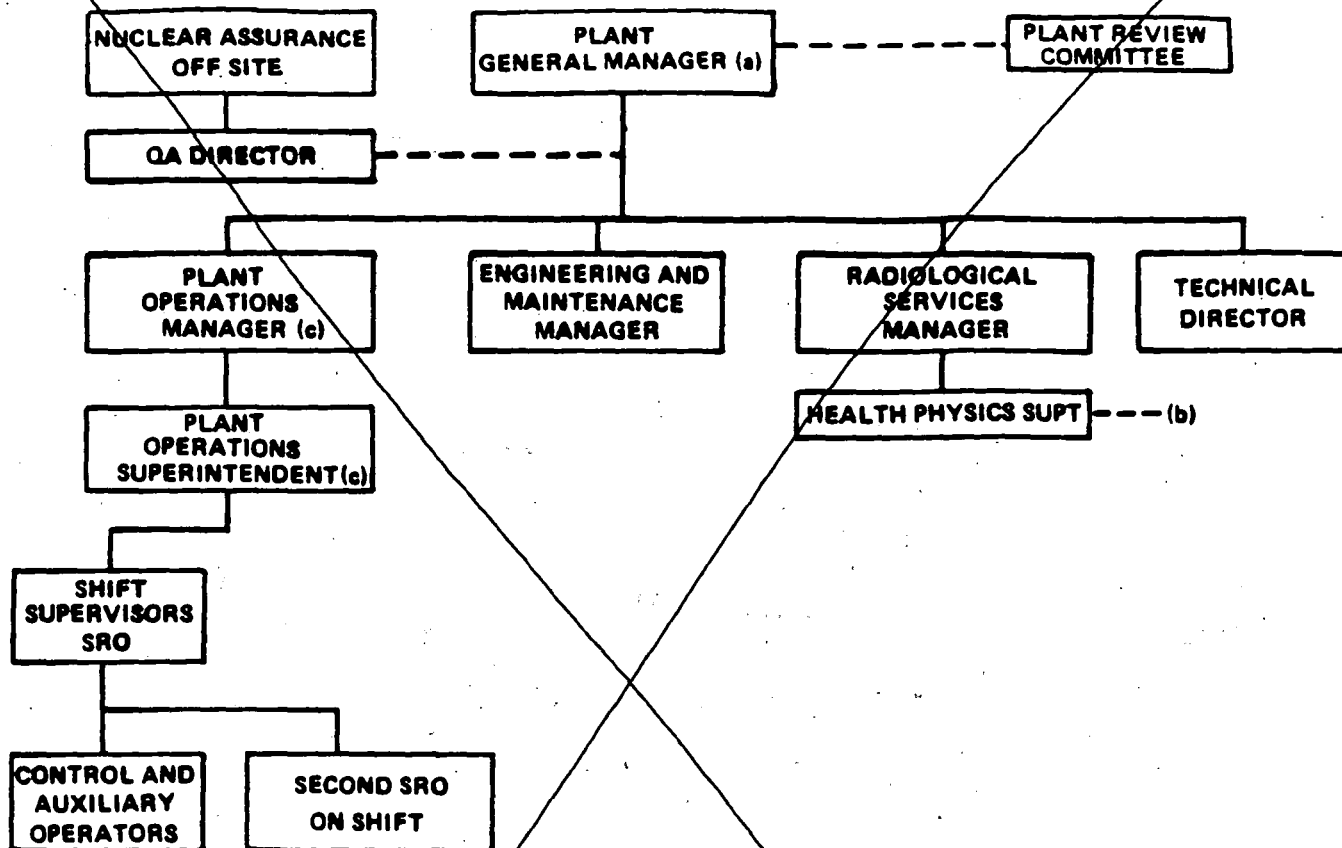
Either the Plant Operations Manager or the Plant Operations Superintendent will hold an SRO License and meet the other requirements of 6.3.1 of these Technical Specifications (as applicable to Operations Manager in ANSI N18.1). The individual holding an SRO License shall be responsible for directing the activities of licensed operators.

*For the purpose of this section, "Equivalent," as utilized in Regulatory Guide 1.8 for the bachelor's degree requirement, may be met with four years of any one or combination of the following: (a) Formal schooling in science or engineering, or (b) operational or technical experience/training in nuclear power.

6-3
~~6-1b~~

Amendment No. 32, 37, 67, 68, 73,
108, 127
~~August 16, 1989~~

**CONSUMERS POWER COMPANY
PLANT ORGANIZATION**



A. To support the above Plant organization, individuals knowledgeable in the following areas identified in ANSI N18.7-1976/ ANS 3.2 will report at the discretion of the Plant General Manager:

1. Nuclear Power Plant Mechanical, Electrical and Electronic Systems
2. Nuclear Engineering
3. Chemistry and Radiochemistry
4. Radiation Protection (Reports to Health Physics Superintendent)

A single individual may be qualified and perform in more than one discipline.

(a) Responsible for the Plant Fire Protection Program implementation.

(b) A Radiation Safety Manager (RPM as defined in Regulatory Guide 1.8) shall be designated by the Plant General Manager and shall be either the Radiological Services Manager or the Health Physics Superintendent. The Radiation Safety Manager shall have direct access to the Plant General Manager in the matters of radiation safety.

(c) Either the Plant Operations Manager or the Plant Operations Superintendent will hold an SRO License and meet the other requirements of 6.3.1 of these Technical Specifications (as applicable to Operations Manager in ANSI N18.1). The individual holding an SRO License shall be responsible for directing the activities of licensed operators.

Figure 6.2-2

~~63~~

Amendment No. 17, 46, 108
October 21, 1987

Figure 6.2-2 (Contd)

- B. The Security Force will be supervised as described in the Plant Security Plan.
- C. Quality Assurance/Control activities will be in accordance with Consumers Power Company's Quality Assurance Program Description for Operational Nuclear Power Plants (CPC-2A, as revised).

~~6-2a~~

~~Amendment No. 108
October 21, 1987~~

ADMINISTRATIVE CONTROLS

6.4 TRAINING

6.4.1 A retraining and replacement training program for the plant staff shall be maintained ~~under the direction of the Executive Director of Energy Supply Planning, Training and Administration~~, and shall meet or exceed the requirements and recommendations of Section 5.5 of ANSI N18.1-1971 and Appendix "A" of 10 CFR Part 55. / /

6.4.2 ~~The Director of Property Protection is responsible for the development, revision, approval and implementation of the Fire Brigade training program. This training shall, as practicable, meet or exceed the requirements of Section 27 of the NFPA Code-1975. Fire Brigade training drills shall be held at least quarterly.~~ ^A / / /

shall be maintained and

6.5 REVIEW AND AUDIT

6.5.1 PLANT REVIEW COMMITTEE (PRC)

6.5.1.1 FUNCTION

The Plant Review Committee (PRC) shall function to advise the Plant General Manager on all matters related to nuclear safety.

6.5.1.2 COMPOSITION

The PRC shall be composed of:

- Chairman: Plant General Manager
- Member: Operations Manager*
- Member: Engineering and Maintenance Manager*
- Member: Radiological Services Manager*
- Member: Plant Safety and Licensing Director*
- Member: Reactor Engineering Superintendent
- Member: Operations Superintendent
- Member: Instrumentation and Control Superintendent
- Member: Shift Supervisor or Shift Engineer(s)(1)

*may serve as Designated Alternate for the Chairman

6.5.1.3 ALTERNATES

Alternate members of the PRC shall be appointed in writing by the PRC Chairman to serve on a temporary basis. No more than two alternates shall participate as voting members at any one time in PRC activities. Members identified with a asterisk (*) above may function as the Designated Alternate for the Chairman, and in so doing, are not considered alternate members for voting purposes.