



**Consumers  
Power**

**POWERING  
MICHIGAN'S PROGRESS**

General Offices: 1945 West Parnall Road, Jackson, MI 49201 • (517) 788-0550

March 12, 1990

Nuclear Regulatory Commission  
Document Control Desk  
Washington, DC 20555

DOCKET 50-255 - LICENSE DPR-20 - PALISADES PLANT -  
MONTHLY TREND GRAPH REPORT

By teleconference between Palisades Plant staff and NRC Region III Reactor Projects Branch Chief on July 25, 1989, Consumers Power Company committed to provide selected performance indicator trend graphs for an 18 month period on a monthly basis. The 18 month period is to cover data from January 1, 1989 through July 31, 1990. Attached are the trend graphs for the January 1, 1989 through January 31, 1990 period.

Brian D Johnson  
Staff Licensing Engineer

CC Administrator, Region III, USNRC  
NRC Resident Inspector - Palisades

Attachment

9003190222 900312  
PDR ADOCK 05000255  
R PDC

OC0190-0011-NL02

*Handwritten:* A001  
111

ATTACHMENT

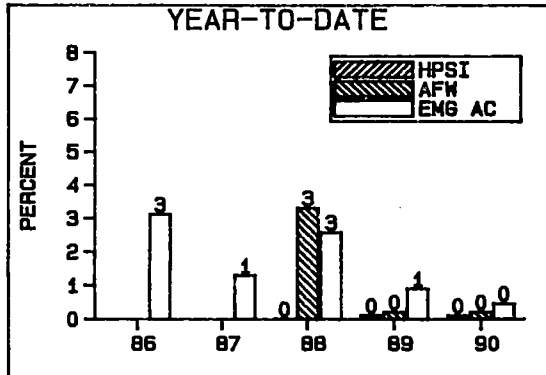
Consumers Power Company  
Palisades Plant  
Docket 50-255

TREND GRAPHS

March 12, 1990

4 Pages

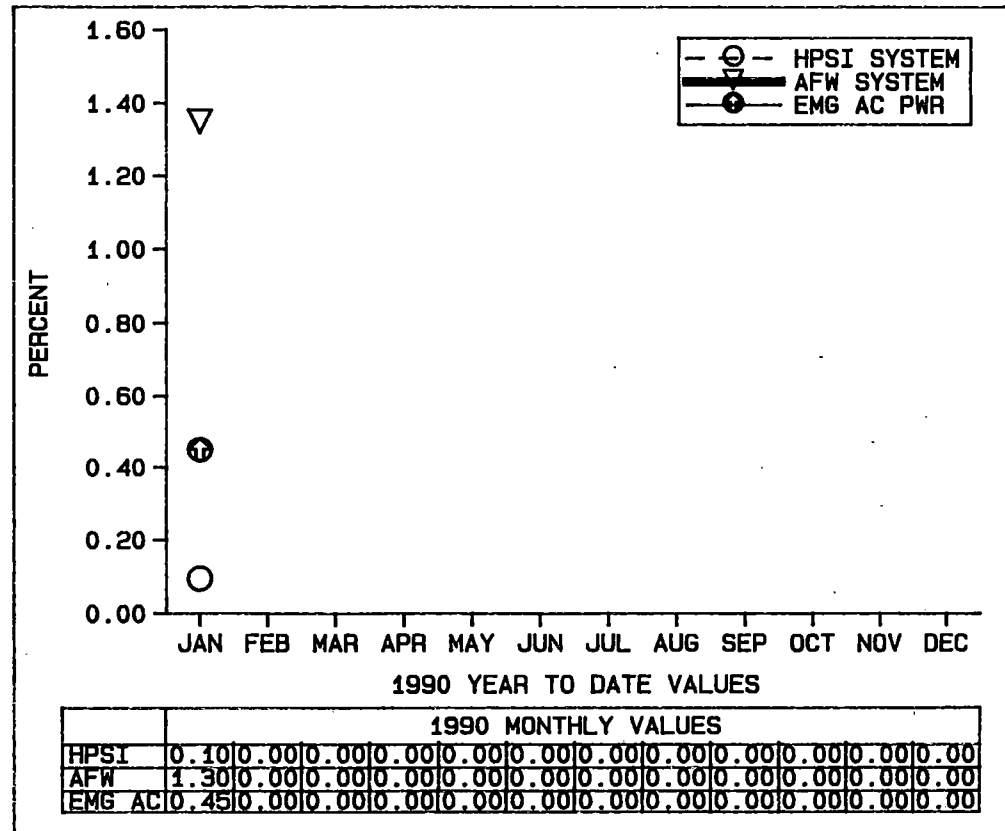
# HPSI/AFW/EMG AC PWR SAFETY STATUS PERFORMANCE INDICATORS



**NOTES**

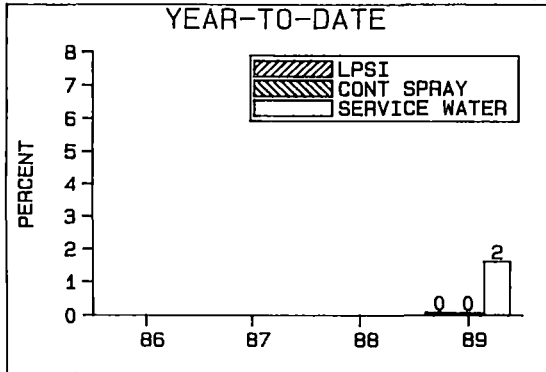
HPSI/AFW DATA BEGINS IN 1988.  
 AC DATA FOR 86 IS OCT-DEC.  
 HPSI/AFW SSPI MEDIAN: 2.2%  
 EMG AC PWR SSPI MEDIAN: 1.7%  
 EMG AC PWR IND AVG: .018%

HPSI/AFW CALC: (HRS UNAVAIL/  
 (HRS CRIT X TRAINS) X 100  
 AC PWR CALC: (UNAVAIL HRS) /  
 (PERIOD HRS X 2 D/G'S)



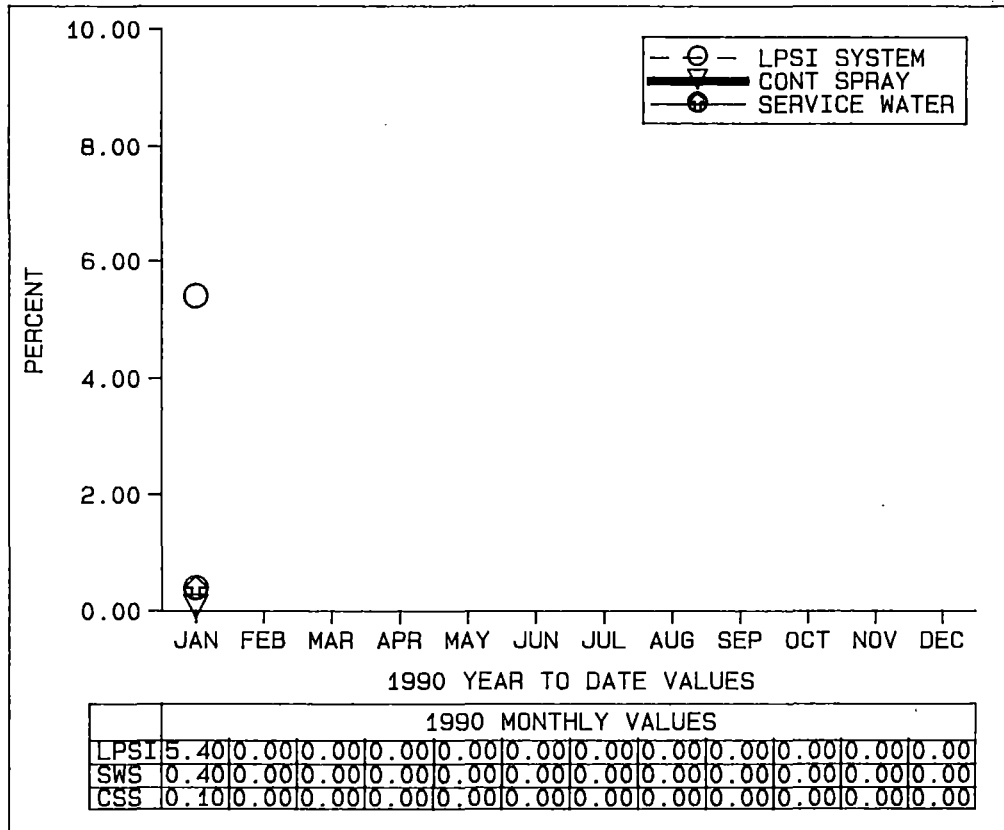
**COMMENTS**

# LPSI/CONT SPRAY/SERVICE WATER SAFETY STATUS PERFORMANCE INDICATORS



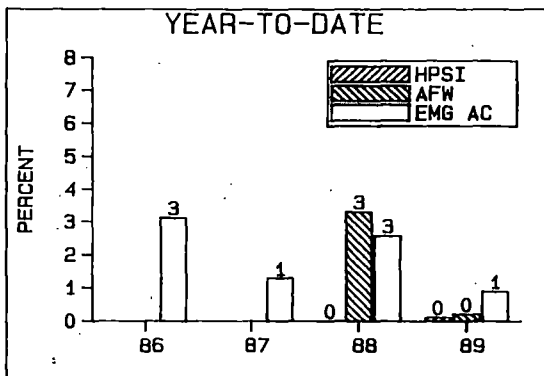
**NOTES**

LPSI/CONT SPRY/SWS CALC:  
(HRS UNAVAIL/HRS CRIT X  
TRAINS) X 100



**COMMENTS**  
SSPI INDICATORS NOT TRACKED PRIOR TO 1989

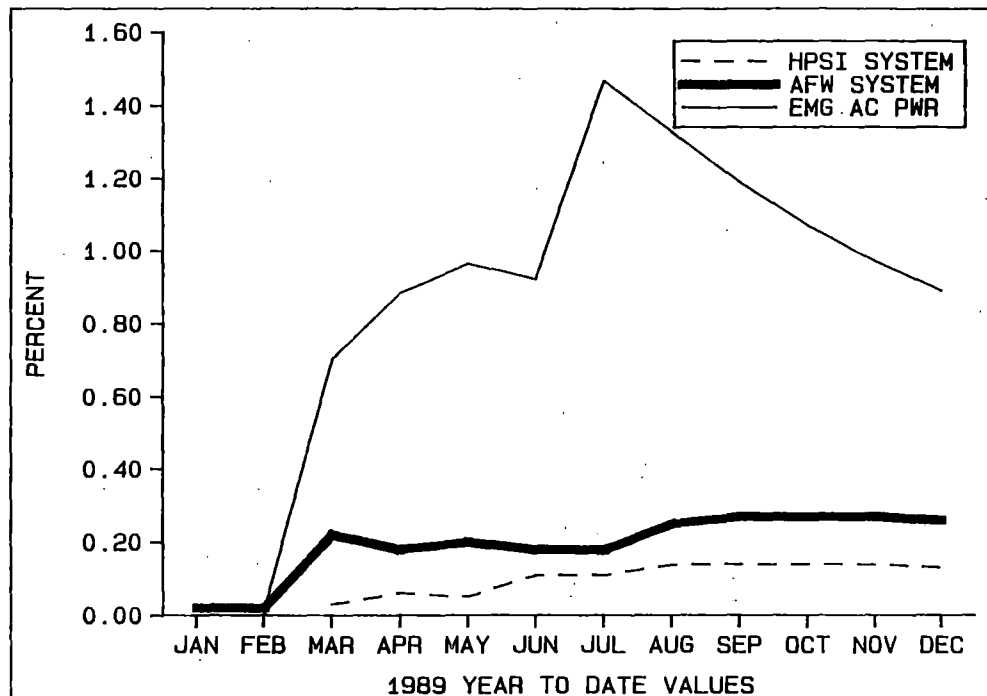
# HPSI/AFW/EMG AC PWR SAFETY STATUS PERFORMANCE INDICATORS



**NOTES**

HPSI/AFW DATA BEGINS IN 1988.  
 AC DATA FOR 86 IS OCT-DEC.  
 HPSI/AFW SSPI MEDIAN: 2.2%  
 EMG AC PWR SSPI MEDIAN: 1.7%  
 EMG AC PWR IND AVG: .018%

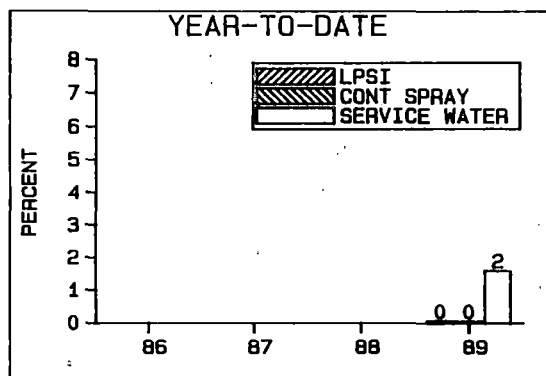
HPSI/AFW CALC: (HRS UNAVAIL/  
 (HRS CRIT X TRAINS) X 100  
 AC PWR CALC: (UNAVAIL HRS) /  
 (PERIOD HRS X 2 D/G'S)



	1989 MONTHLY VALUES											
HPSI	0.00	0.00	0.10	0.10	0.00	0.30	0.10	0.30	0.10	0.00	0.00	0.00
AFW	0.00	0.00	0.40	0.10	0.30	0.10	0.20	0.70	0.40	0.00	0.00	0.00
EMG AC	0.02	0.00	2.02	1.43	1.28	0.01	4.68	0.37	0.02	0.00	0.00	0.01

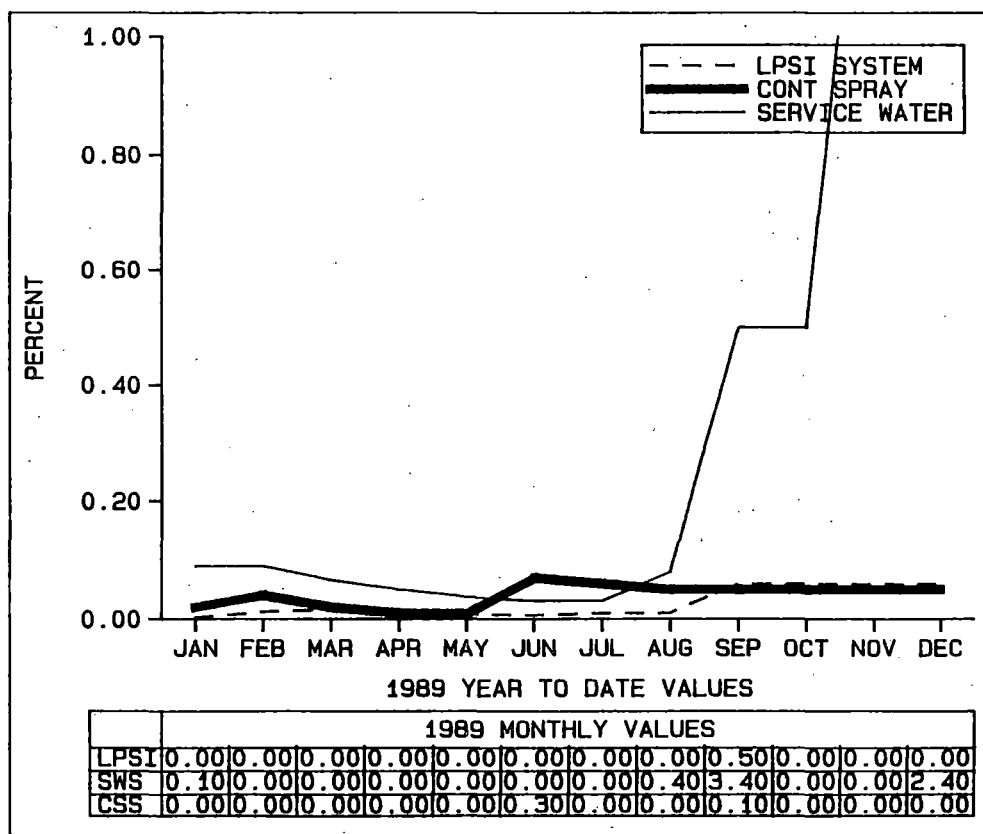
**COMMENTS**

# LPSI/CONT SPRAY/SERVICE WATER SAFETY STATUS PERFORMANCE INDICATORS



**NOTES**

LPSI/CONT SPRY/SWS CALC:  
(HRS UNAVAIL/HRS CRIT X  
TRAINS) X 100



**COMMENTS**  
SSPI INDICATORS NOT TRACKED PRIOR TO 1989