



Consumers
Power

**POWERING
MICHIGAN'S PROGRESS**

General Offices: 1945 West Parnall Road, Jackson, MI 49201 • (517) 788-0550

October 30, 1989

Nuclear Regulatory Commission
Document Control Desk
Washington, DC 20555

DOCKET 50-255 - LICENSE DPR-20 - PALISADES PLANT -
MONTHLY TREND GRAPH REPORT

By teleconference between Palisades Plant staff and NRC Region III Reactor Projects Branch Chief on July 25, 1989, Consumers Power Company committed to provide selected performance indicator trend graphs for an 18 month period on a monthly basis. The 18 month period is to cover data from January 1, 1989 through July 31, 1990. Attached are the trend graphs for the January 1, 1989 through September 30, 1989 period.

Brian D Johnson
Staff Licensing Engineer

CC Administrator, Region III, USNRC
NRC Resident Inspector - Palisades
Reactor Projects Branch 2 Chief, Region III, NRC

Attachment

8911070303 891030
PDR ADDCK 05000255
R PDC

OC1089-0213-NL04

A CMS ENERGY COMPANY

IE01
||

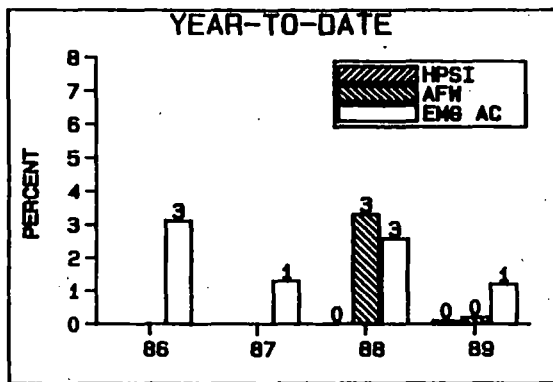
ATTACHMENT

Consumers Power Company
Palisades Plant
Docket 50-255

TREND GRAPHS

October 30, 1989

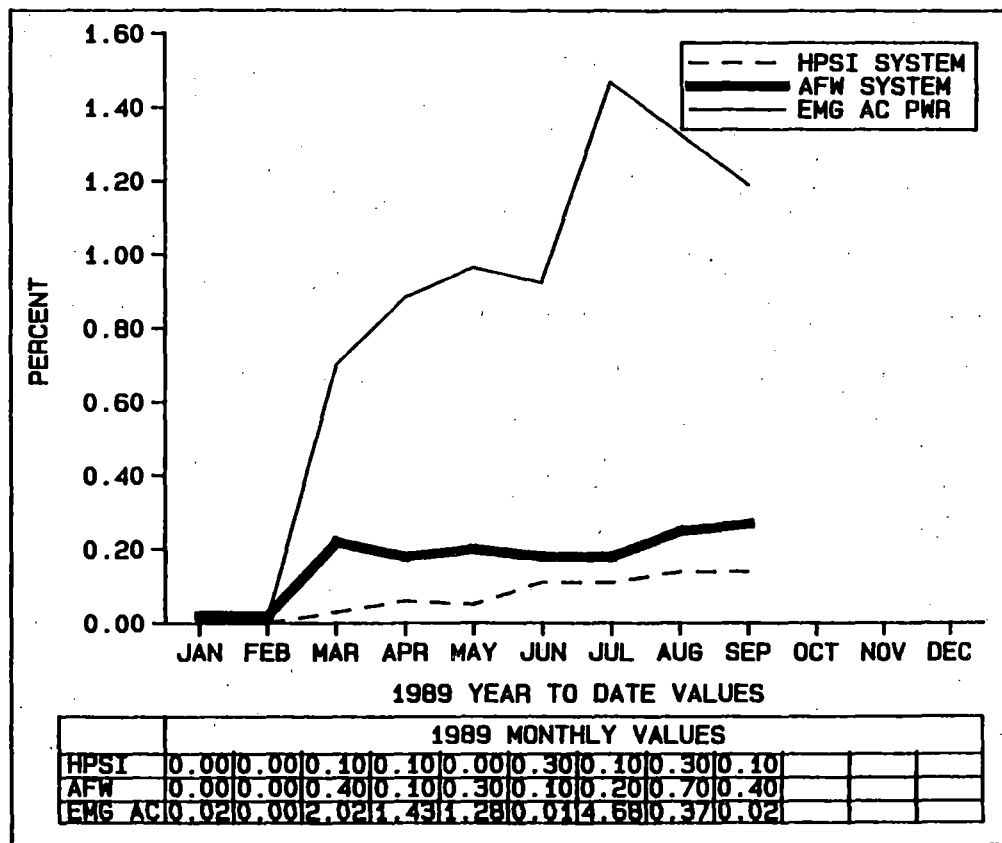
HPSI/AFW/EMG AC PWR SAFETY STATUS PERFORMANCE INDICATORS



NOTES

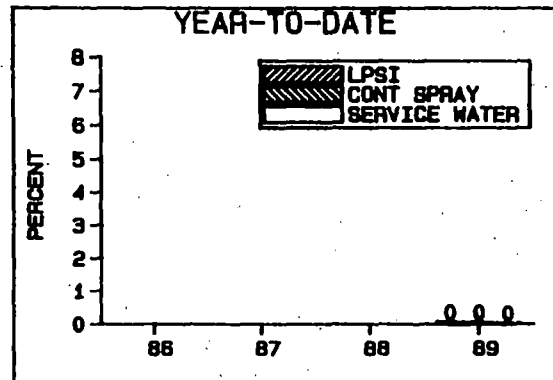
HPSI/AFW DATA BEGINS IN 1988.
 AC DATA FOR 86 IS OCT-DEC.
 HPSI/AFW SSPI MEDIAN: 2.2%
 EMG AC PWR SSPI MEDIAN: 1.7%
 EMG AC PWR IND AVG: .018%

HPSI/AFW CALC: (HRS UNAVAIL/
 (HRS CRIT X TRAINS) X 100
 AC PWR CALC: (UNAVAIL HRS) /
 (PERIOD HRS X 2 D/G'S)



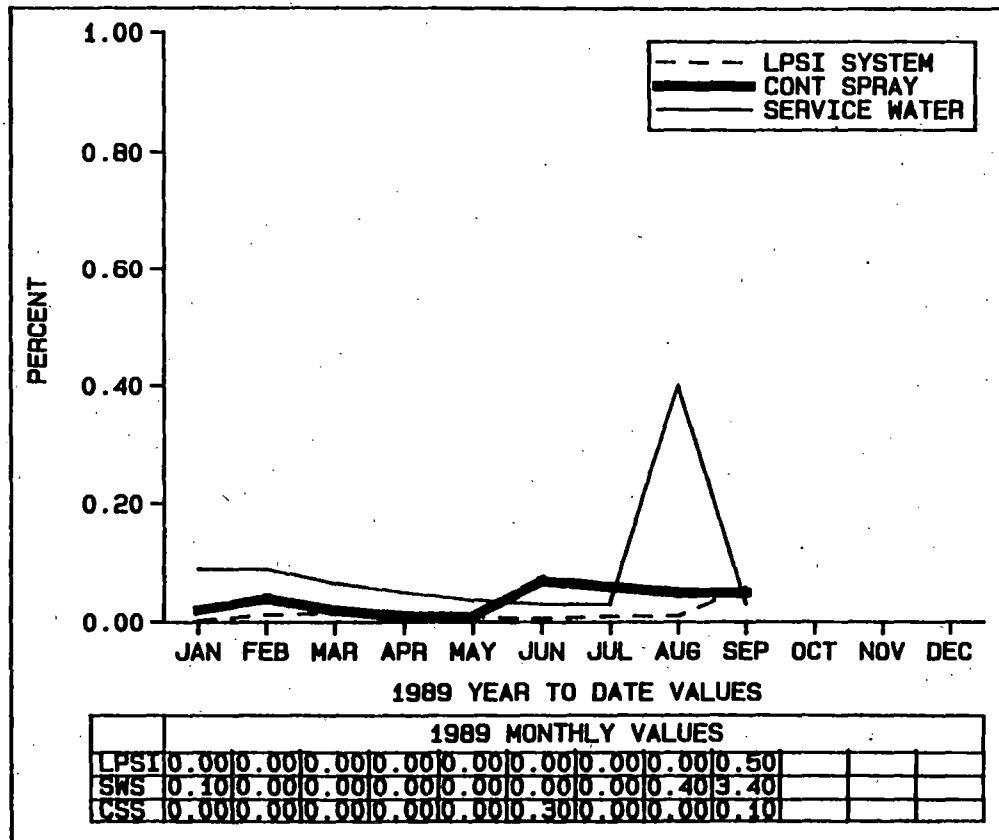
COMMENTS

LPSI/CONT SPRAY/SERVICE WATER SAFETY STATUS PERFORMANCE INDICATORS



NOTES

LPSI/CONT SPRY/SWS CALC:
(HRS UNAVAIL/HRS CRIT X
TRAINS) X 100



COMMENTS
SSPI INDICATORS NOT TRACKED PRIOR TO 1989