

- CLOSE S4-8 FOR MKI-U.
- CLOSE S5-1 FOR MKI-U, OPEN FOR MKII P/B CAPACITY.
- CLOSE S5-2 TO ENABLE INT. TRANSFER.
- OPEN S5-3 FOR MKI-U.
- CLOSE S5-4 FOR MKI-U.
- OPEN S5-5 FOR SINGLE TRANSFER LOCK OUT, CLOSE FOR THREE TIMES LOCK OUT.
- OPEN S5-6 AND S5-8 FOR P/B CAPACITY.
- CLOSE S5-7 TO ENABLE OUT OF SYNC TRANSFER.

TPI THRU TP31
 R180 - LAST R VALUE.
 C76 - LAST C VALUE.
 U69 - LAST U VALUE.
 D47 - LAST D VALUE.

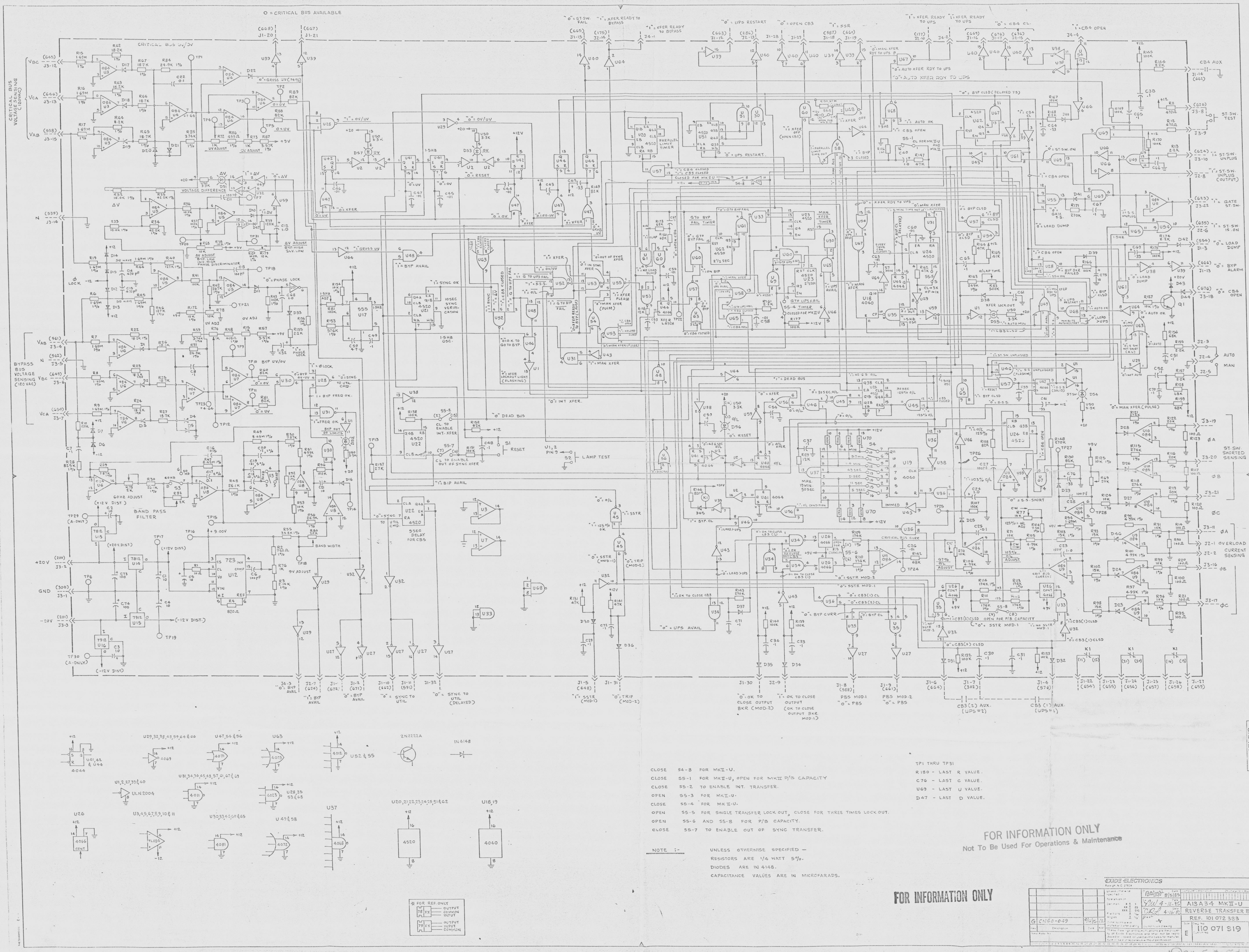
NOTE :-
 UNLESS OTHERWISE SPECIFIED -
 RESISTORS ARE 1/4 WATT 5%.
 DIODES ARE IN 4148.
 CAPACITANCE VALUES ARE IN MICROFARADS.

**SI
 APERTURE
 CARD**

FOR INFORMATION ONLY

EXIDE ELECTRONICS	
Part No.	110 071 319
Rev.	1
Drawn	
Checked	
Approved	
Released	
Quantity	
Material	
Notes	
Comments	
Reference	
Part No.	110 071 319
Rev.	1
Drawn	
Checked	
Approved	
Released	
Quantity	
Material	
Notes	
Comments	
Reference	
Part No.	110 071 319
Rev.	1
Drawn	
Checked	
Approved	
Released	
Quantity	
Material	
Notes	
Comments	
Reference	
Part No.	110 071 319
Rev.	1
Drawn	
Checked	
Approved	
Released	
Quantity	
Material	
Notes	
Comments	
Reference	

9305050L51 E



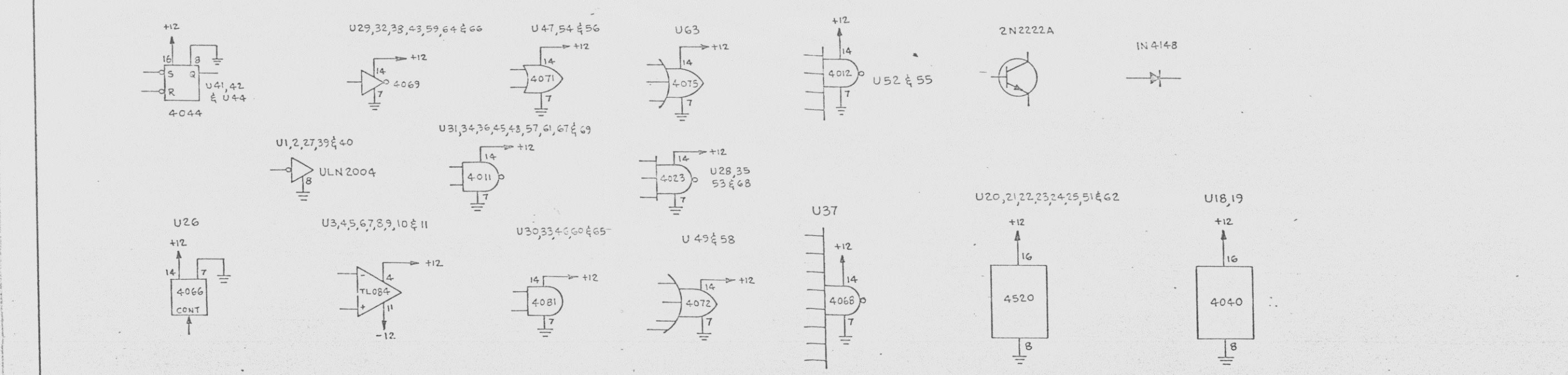
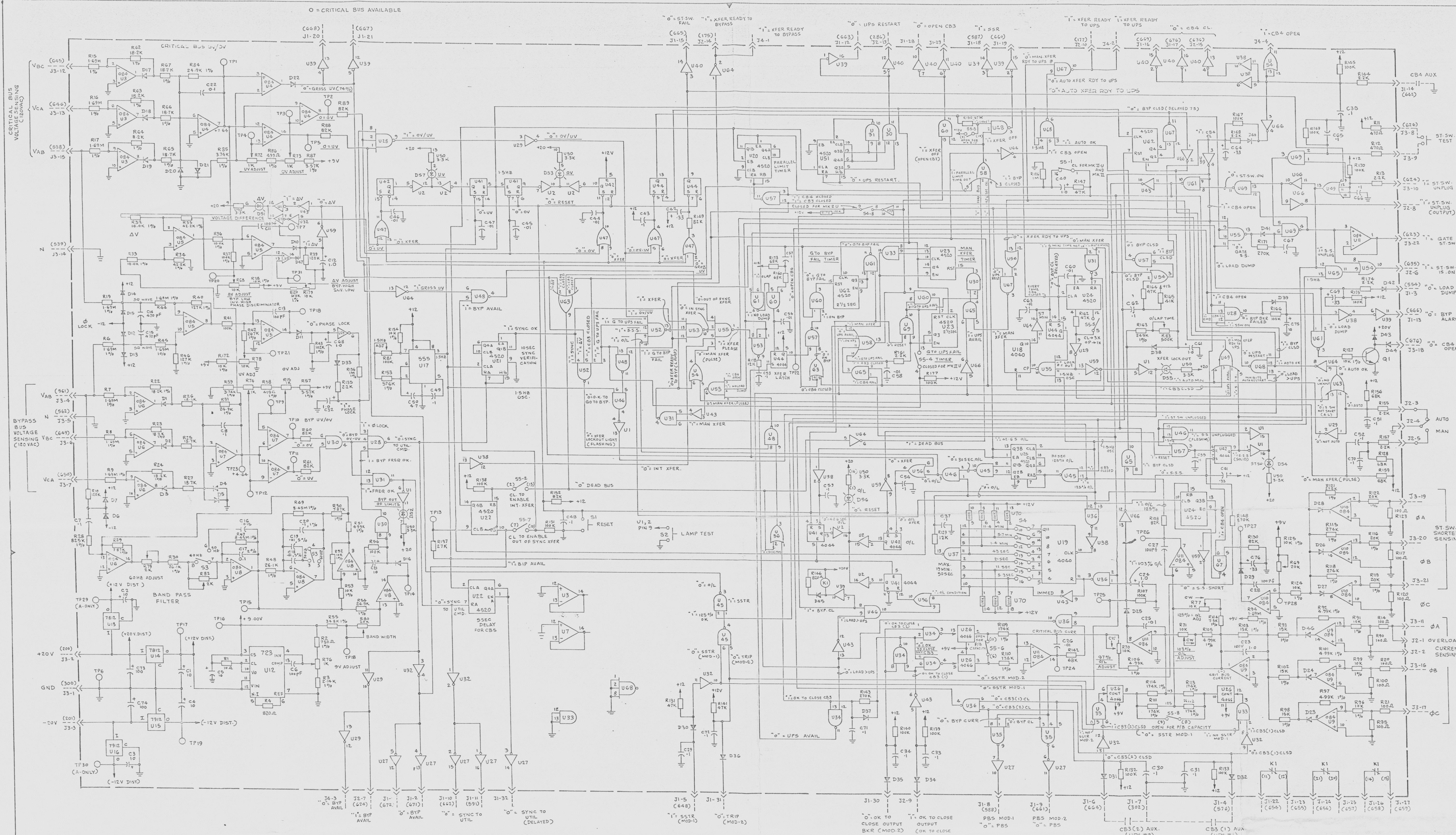
07-91
29

NOTE: -
UNLESS OTHERWISE SPECIFIED -
RESISTORS ARE 1/4 WATT 5%.
DIODES ARE IN 4148.
CAPACITANCE VALUES ARE IN MICROFARADS.

FOR INFORMATION ONLY
Not To Be Used For Operations & Maintenance

EVIDE ELECTRONICS	
Part No.	Description
1000000000	REVERSE TRANSFER BD.
1000000000	REF. 01 072 533
1000000000	E 110 071 519

930505015L-1



NOTE 1: UNLESS OTHERWISE SPECIFIED - RESISTORS ARE 1/4 WATT 5%. DIODES ARE IN 4148. CAPACITANCE VALUES ARE IN MICROFARADS.

TP1 THRU TP51
R180 - LAST R VALUE.
C76 - LAST C VALUE.
U69 - LAST U VALUE.
D47 - LAST D VALUE.

FOR INFORMATION ONLY

FOR INFORMATION ONLY
Not To Be Used For Operations & Maintenance

REVISE ELECTRONICS	
NO.	DESCRIPTION
1	REVISED FOR MKII-U
2	REVISED FOR MKII-U
3	REVISED FOR MKII-U
4	REVISED FOR MKII-U
5	REVISED FOR MKII-U
6	REVISED FOR MKII-U
7	REVISED FOR MKII-U
8	REVISED FOR MKII-U
9	REVISED FOR MKII-U
10	REVISED FOR MKII-U
11	REVISED FOR MKII-U
12	REVISED FOR MKII-U
13	REVISED FOR MKII-U
14	REVISED FOR MKII-U
15	REVISED FOR MKII-U
16	REVISED FOR MKII-U
17	REVISED FOR MKII-U
18	REVISED FOR MKII-U
19	REVISED FOR MKII-U
20	REVISED FOR MKII-U
21	REVISED FOR MKII-U
22	REVISED FOR MKII-U
23	REVISED FOR MKII-U
24	REVISED FOR MKII-U
25	REVISED FOR MKII-U
26	REVISED FOR MKII-U
27	REVISED FOR MKII-U
28	REVISED FOR MKII-U
29	REVISED FOR MKII-U
30	REVISED FOR MKII-U
31	REVISED FOR MKII-U
32	REVISED FOR MKII-U
33	REVISED FOR MKII-U
34	REVISED FOR MKII-U
35	REVISED FOR MKII-U
36	REVISED FOR MKII-U
37	REVISED FOR MKII-U
38	REVISED FOR MKII-U
39	REVISED FOR MKII-U
40	REVISED FOR MKII-U
41	REVISED FOR MKII-U
42	REVISED FOR MKII-U
43	REVISED FOR MKII-U
44	REVISED FOR MKII-U
45	REVISED FOR MKII-U
46	REVISED FOR MKII-U
47	REVISED FOR MKII-U
48	REVISED FOR MKII-U
49	REVISED FOR MKII-U
50	REVISED FOR MKII-U

930 5050151-2

07-91
29