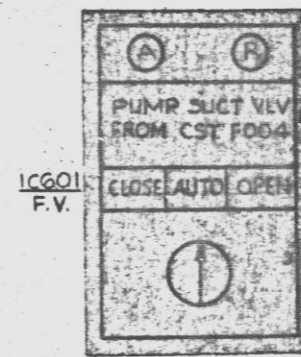
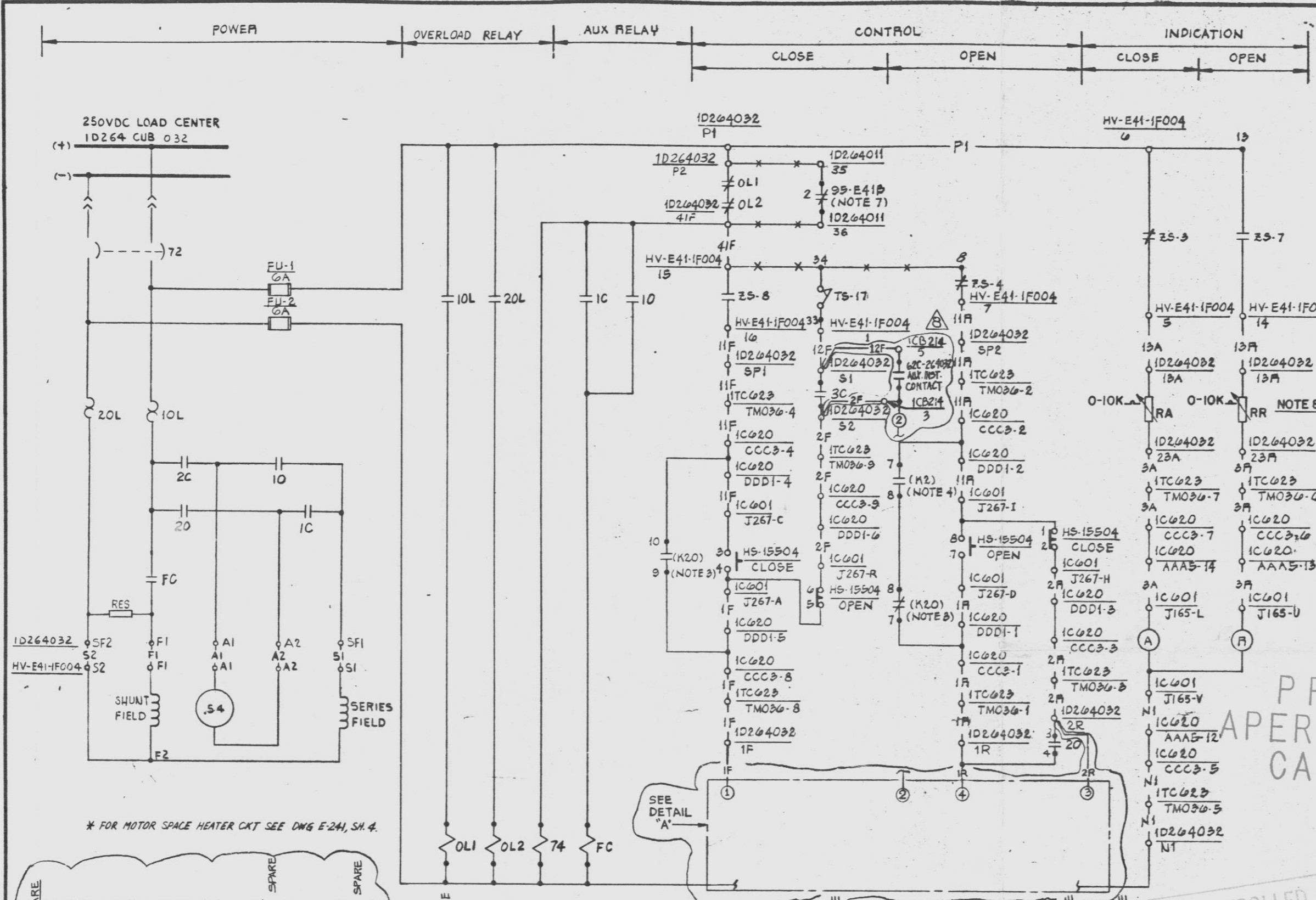


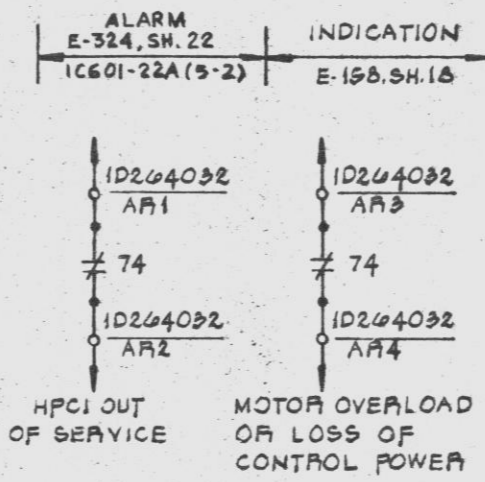
This drawing and the design it covers are the property of BECHTEL. They are hereby loaned and on the borrower's express agreement that they will not be reproduced, copied, loaned, exhibited, nor used except in the limited way and private use permitted by the lender to the borrower.



BLOCK NO.	CONTACT NO.	POSITION		PART NO.
		CLOSE	OPEN	
1	1F	X		THIS SH
	1B	X	X	THIS SH
2	2F	X	X	THIS SH
	2B	X	X	THIS SH

VALVE LIMIT SWITCH DEVELOPMENT				
CONTACTS	100% OPEN	INTERMEDIATE	100% CLOSED	CONTACT USED
25-1	10-11-02			SPARE
25-2	30-11-04			SPARE
25-3	50-11-06			THIS SHEET
25-4	70-11-08			THIS SHEET
25-5	90-11-10			SPARE
25-6	110-11-12			SPARE
25-7	130-11-14			THIS SHEET
25-8	150-11-16			THIS SHEET
25-9	170-11-18			SPARE
25-10	190-11-20			SPARE
25-11	210-11-22			SPARE
25-12	230-11-24			SPARE
25-13	250-11-26			SPARE
25-14	270-11-28			SPARE
25-15	290-11-30			SPARE
25-16	310-11-32			SPARE
TS-17	33-0-34	OPEN ON HIGH CLOSING TORQUE		THIS SHEET
TS-18	35-0-36	OPEN ON HIGH OPENING TORQUE		SPARE

CONTACT CLOSED  
HV-E41-1F004

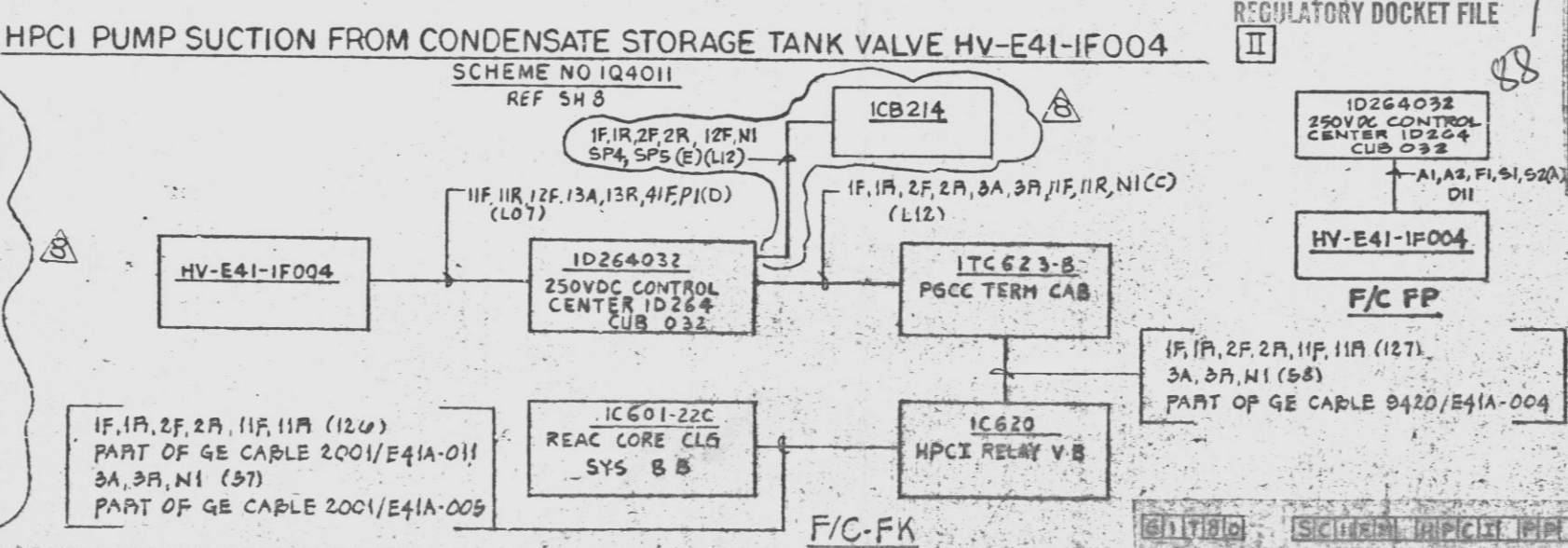
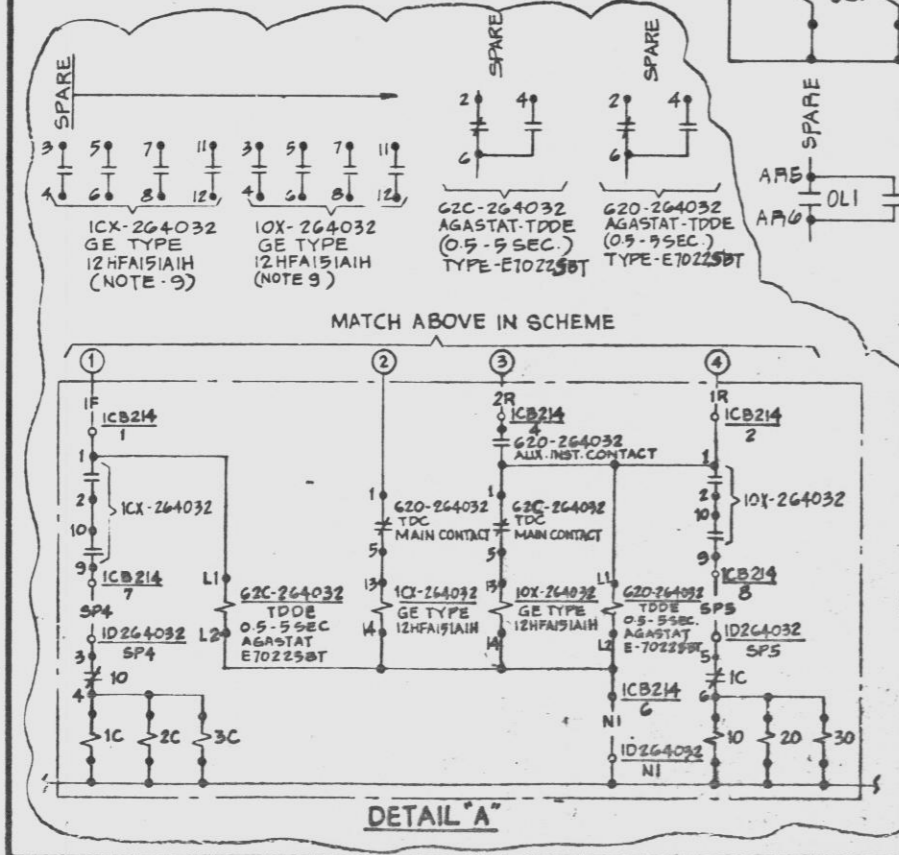


POOR ORIGINAL

PRC APERTURE CARD

- FIELD TO REPLACE WITH 0-10K OHM VARIABLE RESISTORS AND ADJUST TO 24V ACROSS THE LIGHT CIRCUIT.
- DONOT USE N.C. CONTACT OF THIS RELAY FOR CONTROL CIRCUIT INTERLOCK.

- NOTES
- FOR STANDARD SYMBOLS FOR ELECTRICAL DIAGRAMS, SEE DWG. 8856-E-42.
  - ALL DEVICE NOS. TO BE SUFFIXED BY STARTER LOCATION NO. UNLESS NOTED OTHERWISE.
  - RELAY K20 ENERGIZED WHEN HV-E41-1F004 FULLY OPEN.
  - CLOSES ON HIGH DRYWELL PRESSURE OR ON LOW WATER LEVEL.
  - NOS. IN PARENTHESES ARE GE DEVICE NOS.
  - DESIGN BASED ON SHAPED ELEMENTARY 791E 410WT (V/P 8856-MI-E41-69).
  - FOR TEST BYPASS CONTACT 9B-E41-69 SEE DWG. E-155, SH. 1.



UNCONTROLLED DOCUMENT FOR REFERENCE ONLY

Docket # 50-387  
Control # 3303090234  
Date 3/1/83 of Document  
REGULATORY DOCKET FILE

REFERENCE DWG'S.	
BECHTEL NO.	PL. NO.
E-42	A-107191
8856-MI-E41-69	FR127250
E-185	O-107894

REV.	DATE	REVISIONS	BY	CHKD.	ENG. APPROV.
1/22		REV TO DELETE DCP 5381E REV 1 PER SPB-2670			
2/82		RE-ISSUED "AS BUILT" INCORP. IDEN #1 (DCP 411.12.R.6)			
9/79		ISSUED "AS BUILT"			
7/75		ISSUED FOR CONSTRUCTION			
2/75		ISSUED FOR INFORMATION			

THIS DOCUMENT IS UNDER FINAL ADMINISTRATIVE CONTROL. NO CHANGES CAN BE MADE WITHOUT PRIOR PNL APPROVAL.

EDWARD K. KANG  
REGISTERED PROFESSIONAL ENGINEER  
No. 10145  
PENNSYLVANIA

PENNSYLVANIA POWER & LIGHT COMPANY  
ALLENTOWN, PENNSYLVANIA  
BUSHKHAMMA STEAM ELECTRIC STATION - UNIT 1, UNIT 2

BECHTEL - SAN FRANCISCO

SCHEMATIC DIAGRAM  
HPCI PP SUCT. FRM CNDS STOR TK VALVE UNIT 1

JOB No.	DRAWING No.	REV.
8856	E-152 SH12	8

D-107301 SH12

24X

I certify that the microfilm image contained on this microform was made in the normal and regular course of business. This is a true, full, correct and complete reproduction and replacement for and/or in lieu of original documents owned by the Bechtel Companies.

JACINTO  
Camera Type MRG I  
Date 8-16-82

D