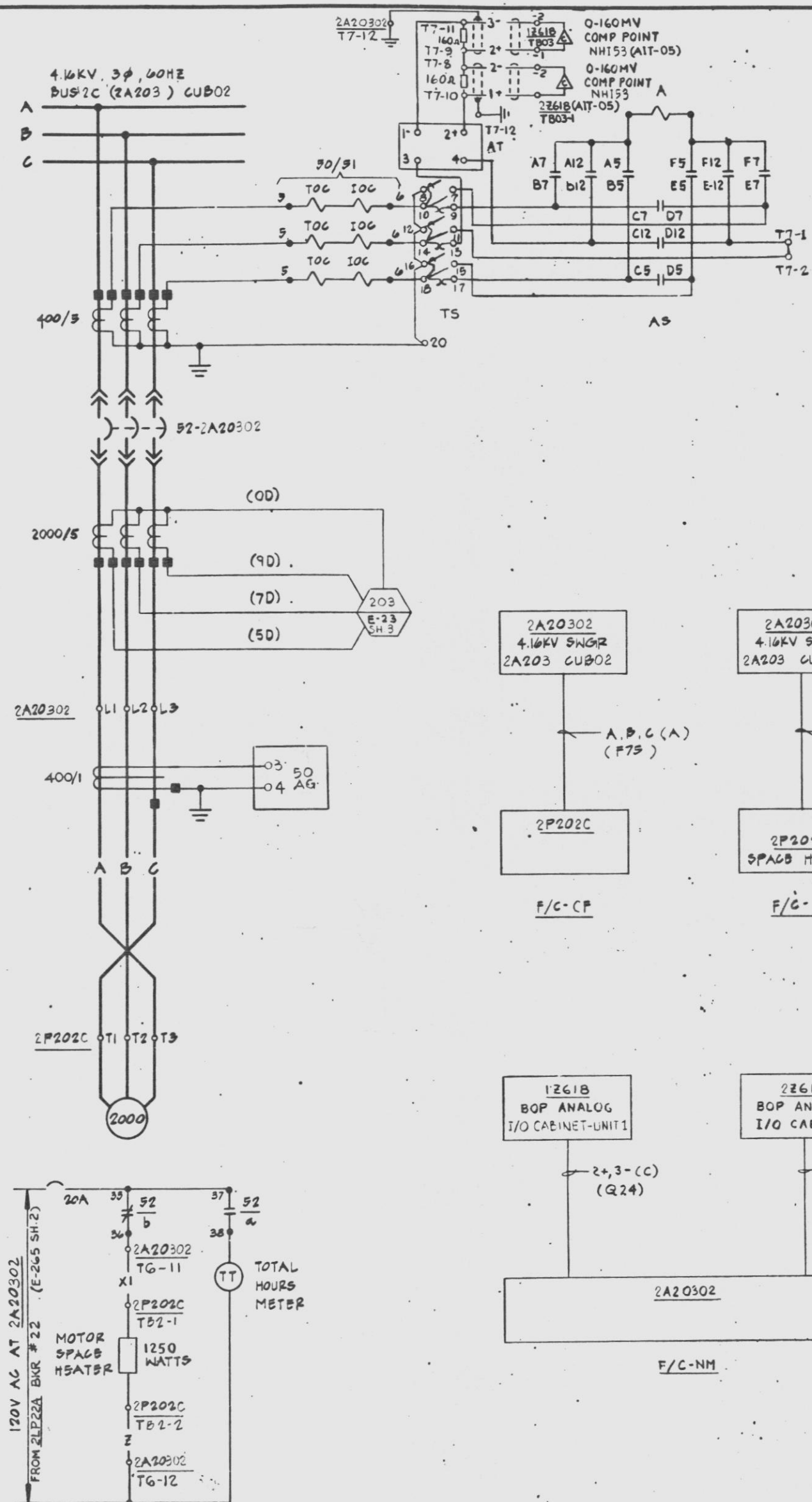


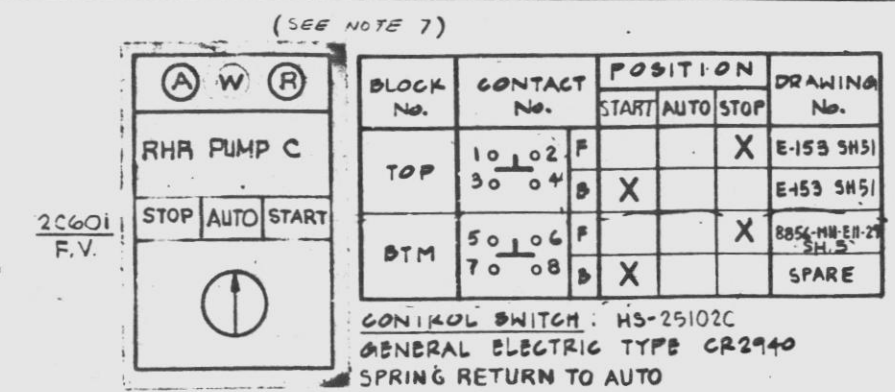
This drawing and its design it covers are the property of BECHTEL. They are hereby leased and on the borrower's express agreement that they will not be reproduced, copied, loaned, altered, exhibited, nor used except in the limited way and under conditions permitted by the lender of this instrument.



AMMETER SWITCH AB

CONTACT	A	B	C	D	E	F	G	CONTACT
A12-O-0B15	X	X	X	X	X	X	X	TMS 5H
A12-O-0D12	X	X	X	X	X	X	X	
B12-O-0D12	X	X	X	X	X	X	X	
A3-O-0D8	X	X	X	X	X	X	X	
B3-O-0D8	X	X	X	X	X	X	X	
A7-O-0D7	X	X	X	X	X	X	X	
B7-O-0D7	X	X	X	X	X	X	X	

AMMETER SWITCH: AS-2A20302  
 WEATINGHOUSE TYPE W2 W/ ROUND FIXED HANDLE  
 MAINTAINS CONTACTS  
 THREE INDEPENDENT CIRCUIT WITH OFF



CIRCUIT	CONTACT	POSITION	DRAWING
F.V. CONTROL	A11-O-0B11	X	E-153 SH51
	A11-O-0D12	X	E-153 SH51
	A11-O-0D15	X	E-153 SH51
	A11-O-0D18	X	E-153 SH51
	A11-O-0D21	X	E-153 SH51
	A11-O-0D24	X	E-153 SH51
	A11-O-0D27	X	E-153 SH51
	A11-O-0D30	X	E-153 SH51
	A11-O-0D33	X	E-153 SH51
	A11-O-0D36	X	E-153 SH51
	A11-O-0D39	X	E-153 SH51
	A11-O-0D42	X	E-153 SH51
	A11-O-0D45	X	E-153 SH51
	A11-O-0D48	X	E-153 SH51
	A11-O-0D51	X	E-153 SH51
	A11-O-0D54	X	E-153 SH51

Normally closed contacts of W-2 switches with spring return to neutral are not to be used in a safety-related circuit which functions in a positive manner to mitigate a design basis event. refer to NRC 10 Bulletin 80-20 & 81 9711.

SCHEME No. 2Q3002

REFERENCE DWG'S.

BECHTEL NO.	PL. NO.
E-42	A-107141
E-23 SH 3	B-107172
E-5 SH 2	B-107194
8856-MI-EH-29	FF124510
E-105	D-107252
E-324	D-107475
V/P-E109-19	FF-103090
E-223	D-107372
E-301	D-107450

- NOTES:
- FOR STANDARD SYMBOLS FOR ELECTRICAL DIAGRAMS SEE DRAWING 8856-S-42.
  - ALL DEVICE NUMBERS TO BE SUFFIXED BY BREAKS. LOCATION NUMBER UNLESS NOTED OTHERWISE.
  - FOR SCHEMATIC DIAGRAM, SEE DRAWING E-153 SH 51.
  - CLOSES ON EITHER (a) HIGH DRYWELL PRESSURE COINCIDENT WITH LOW REACTOR PRESSURE, OR (b) LOW REACTOR LEVEL.
  - CLOSES IF SUCTION VALVES NOT OPEN.
  - NUMBERS IN PARENTHESES APPEARING IN SCHEMATIC DIAGRAM ARE GENERAL ELECTRIC DEVICE NUMBERS.
  - FOR SCHEMATIC DIAGRAM SEE V/P-8856-MI-EH-29 (S) (D).
  - CLOSES WHEN POWER AVAILABLE AT EMERGENCY DIESEL BUS FOR RHR PUMP 2C.
  - DESIGN BASED ON G.E. ELEMENTARY 791E418AE (Vp8856-MI-EH-29(20)).

PRC APERTURE CARD

UNCONTROLLED DOCUMENT FOR REFERENCE ONLY

POOR ORIGINAL

REGULATORY DOCKET FILE

DATE: 3/1/83 of Doc: 8303090234 - 01

NO.	DATE	REVISIONS
1	3/1/83	ISSUED FOR CONSTRUCTION
2	3/1/83	ISSUED FOR RHR SWITCHGEAR FABRICATION ONLY

DESIGNER: JEC/PAW/STK  
 DRAWN: M.H. YOUNG

**PENNSYLVANIA POWER & LIGHT COMPANY**  
 ALLENTOWN, PENNSYLVANIA  
 SUSQUEHANNA STEAM ELECTRIC STATION - UNIT 1, UNIT 2

BECHTEL - SAN FRANCISCO

**SCHEMATIC DIAGRAM**  
**RHR PUMP 2C**  
**UNIT 2**

JOB No.	DRAWING No.	REV.
8856	E-153 SH 50	7

D-107302 SH50

24X

8303090234 - 01 D