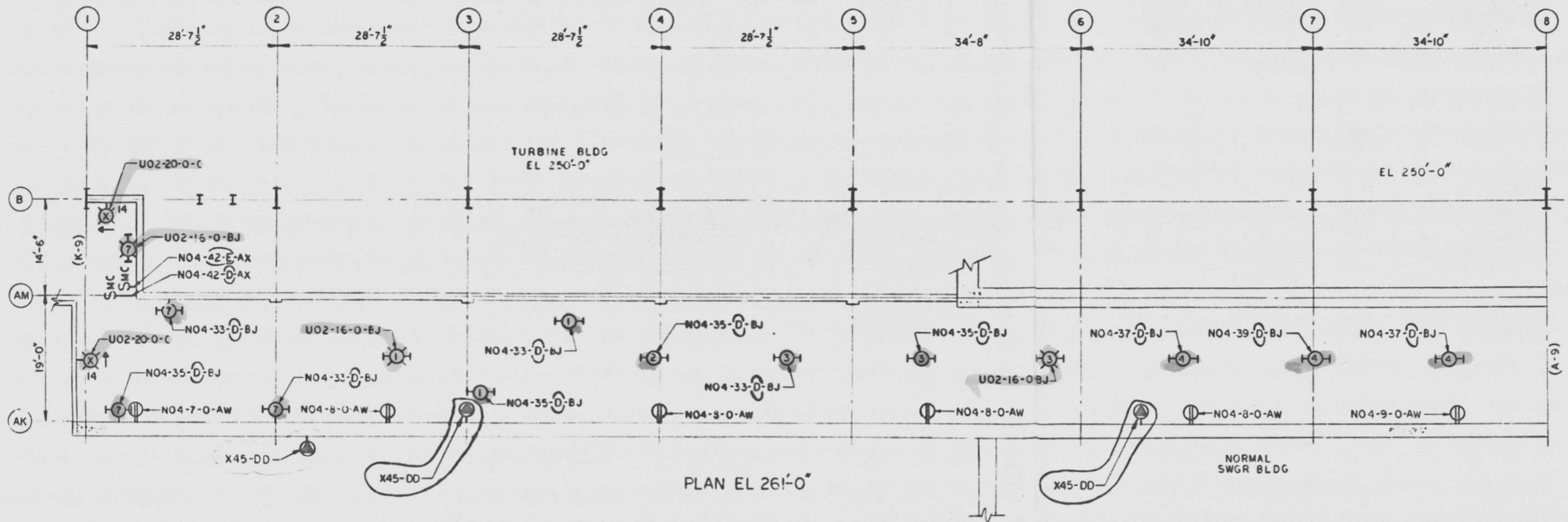
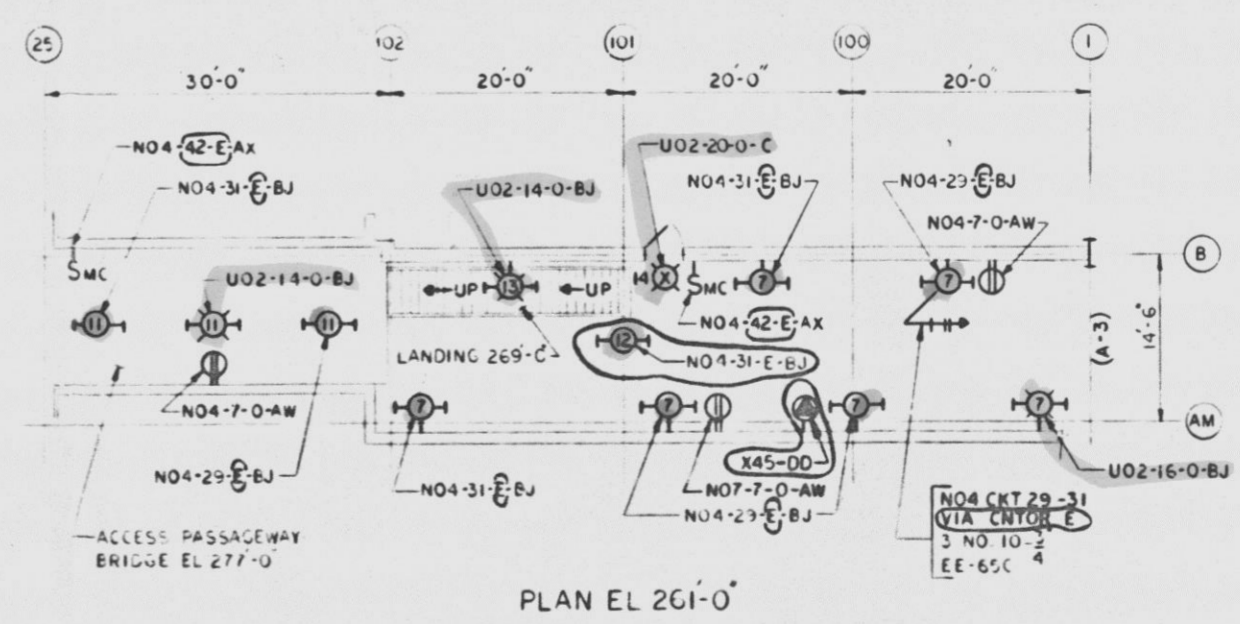
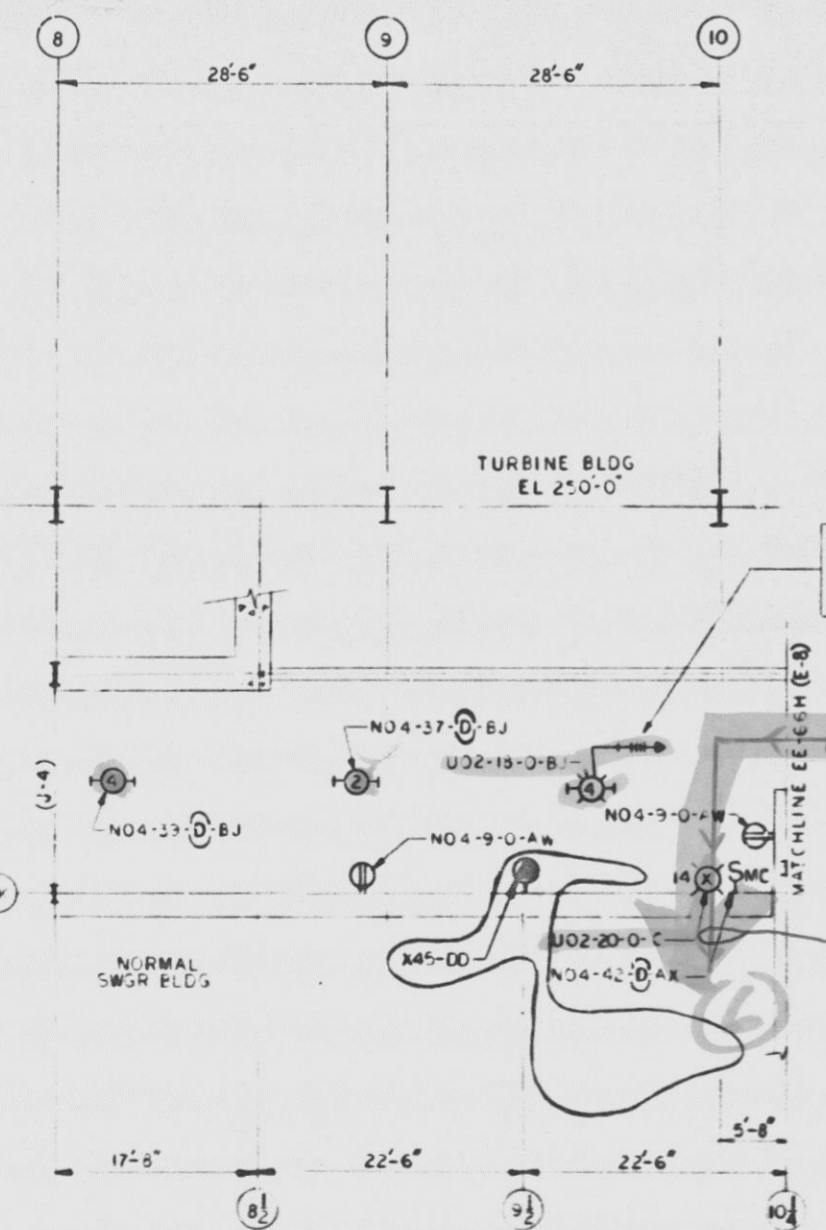


12177-EE-78A-4



| LOCATION SCHEDULE | | |
|-------------------|---------------------|---------|
| NO | OUTLET BOX LOCATION | EL |
| 1 | UNDER TRAY | 274'-0" |
| 2 | UNDER TRAY | 278'-3" |
| 3 | UNDER TRAY | 273'-8" |
| 4 | UNDER TRAY | 279'-8" |
| 5 | UNDER TRAY | 274'-4" |
| 6 | UNDER TRAY | 273'-2" |
| 7 | ON WALL | 273'-0" |
| 8 | UNDER SLAB | 271'-0" |
| 9 | UNDER SLAB | 268'-5" |
| 10 | UNDER PLATFORM | 277'-0" |
| 11 | UNDER STEEL | 289'-0" |
| 12 | UNDER STEEL | 271'-8" |
| 13 | ON WALL | 277'-0" |
| 14 | ON WALL | 268'-6" |

- NOTES:
- SCALE 1/8" = 1'-0" UNLESS OTHERWISE NOTED.
 - CONDUIT SHALL BE 3/4" MINIMUM.
 - FIXTURES LOCATED TO SCALE AND MAY BE RELOCATED BY FIELD ± 1'-0".
 - WELDING & VACUUM CLEANER OUTLET TYPE DD, TYPICAL WIRING DETAIL (SEE 10-CH).
 - EACH RECEPTACLE CIRCUIT TO HAVE SEPARATE NEUTRAL WIRE.
 - ALL WIRING TO BE #12 UNLESS OTHERWISE NOTED.
 - MOMENTARY CONTACT SWITCH TYPE AX TYPICAL WIRING DIAGRAM (SEE 10-CH).
 - LEGEND FOR TYP EQUIPMENT & CIRCUIT FEEDER DESIGNATIONS EE-65A.
 - WHERE WIRE GAUGE IS SHOWN, IT IS A MINIMUM SIZE.
 - EACH TYPE DD OUTLET TO BE MOUNTED ON STEEL BOX MARK NO HJA-72.



2LAC-PNL U02 —

NORMAL POWER —

- REFERENCES:
- CND, TRAY & LGT NOTES-GENL STD-ME-1-1 & 1-2
 - CONDUIT NOTES STD-ME-1-3 & 1-4
 - LIGHTING NOTES STD-ME-1-6
 - LGT, CND, TRAY & GNDG SYMBOLS STD-ME-3-1
 - LIGHTING & MISC SYMBOLS STD-ME-3-2 THRU 3-7
 - LIGHTING FIXTURE SCHEDULE 12177-EE-201A THRU 201E
 - LGT PLAN CONTROL BLDG EL 261'-0" EE-65B

INFORMATION ONLY

07-14-91

QA CAT III

APPROVED: *R. Vishwanath*
 LICENSED PROFESSIONAL ENGINEER, N.Y.
 STATE OF NEW YORK
 ALTERNATION EXCEPT BY A LICENSED PROFESSIONAL ENGINEER IS ILLEGAL

DUPE of 9305030140

BILL OF MATERIALS NO. 12177-BM-78A

THE INFORMATION ON THIS DRAWING MAY NOT BE COPIED OR USED FOR OTHER THAN THE CONSTRUCTION, MAINTENANCE OR REPAIR OF THE PLANT FACILITY DESCRIBED IN THE TITLE BLOCK.

LIGHTING PLAN
ELECTRICAL BAY

NINE MILE POINT NUCLEAR STATION - UNIT 2
 NIAGARA MOHAWK POWER CORPORATION
 FOSTER & WHEELER ENGINEERING CORPORATION
 BOSTON, MASS.

10-CH DRAWING NUMBER 12177-EE-78A-4

DESIGNED BY P. WEINER
 CHECKED BY A.B. MECKLEY
 DRAWN BY R. WISHART
 CHECKED BY J. BURNS

| NO | DESCRIPTION | QTY | UNIT | DATE | BY | CHKD | APPD | DATE | NO | DESCRIPTION | QTY | UNIT | DATE | BY | CHKD | APPD | DATE |
|-----|---|-----|------|------|----|------|------|------|----|---|-----|------|------|----|------|------|------|
| 1 | SEE RECORD OF DRAWING CHANGES 12177-BCE-78A-4 | | | | | | | | 1 | SEE RECORD OF DRAWING CHANGES 12177-BCE-78A-2 | | | | | | | |
| 100 | ... | 100 | ... | | | | | | 90 | ... | 90 | ... | | | | | |