

CATEGORY 1

REGULATOR INFORMATION DISTRIBUTION SYSTEM (RIDS)

ACCESSION NBR: 9707170126 DOC. DATE: 97/07/11 NOTARIZED: NO DOCKET #
FACIL: 50-296 Browns Ferry Nuclear Power Station, Unit 3, Tennessee 05000296
AUTH. NAME AUTHOR AFFILIATION
ABNEY, T.E. Tennessee Valley Authority
RECIP. NAME RECIPIENT AFFILIATION
 Document Control Branch (Document Control Desk)

SUBJECT: Forwards BFN Unit 3 response to GL 88-20, Suppl 4, "IPEEE - FIRE)." Content & format of rept reflect guidance of NUREG-1407.

DISTRIBUTION CODE: A001D COPIES RECEIVED: LTR 1 ENCL 1 SIZE: 8+350
TITLE: OR Submittal: General Distribution

see Reports

NOTES:

	RECIPIENT ID CODE/NAME	COPIES LTR ENCL	RECIPIENT ID CODE/NAME	COPIES LTR ENCL
	PD2-3 WILLIAMS, J.	1 1 1 1	PD2-3-PD	1 1
INTERNAL:	ACRS	1 1	FILE CENTER 01	1 1
	NRR/DE/ECGB/A	1 1	NRR/DE/EMCB	1 1
	NRR/DRCH/HICB	1 1	NRR/DSSA/SPLB	1 1
	NRR/DSSA/SRXB	1 1	NUDOCS-ABSTRACT	1 1
	OGC/HDS3	1 0		
EXTERNAL:	NOAC	1 1	NRC PDR	1 1

C
A
T
E
G
O
R
Y

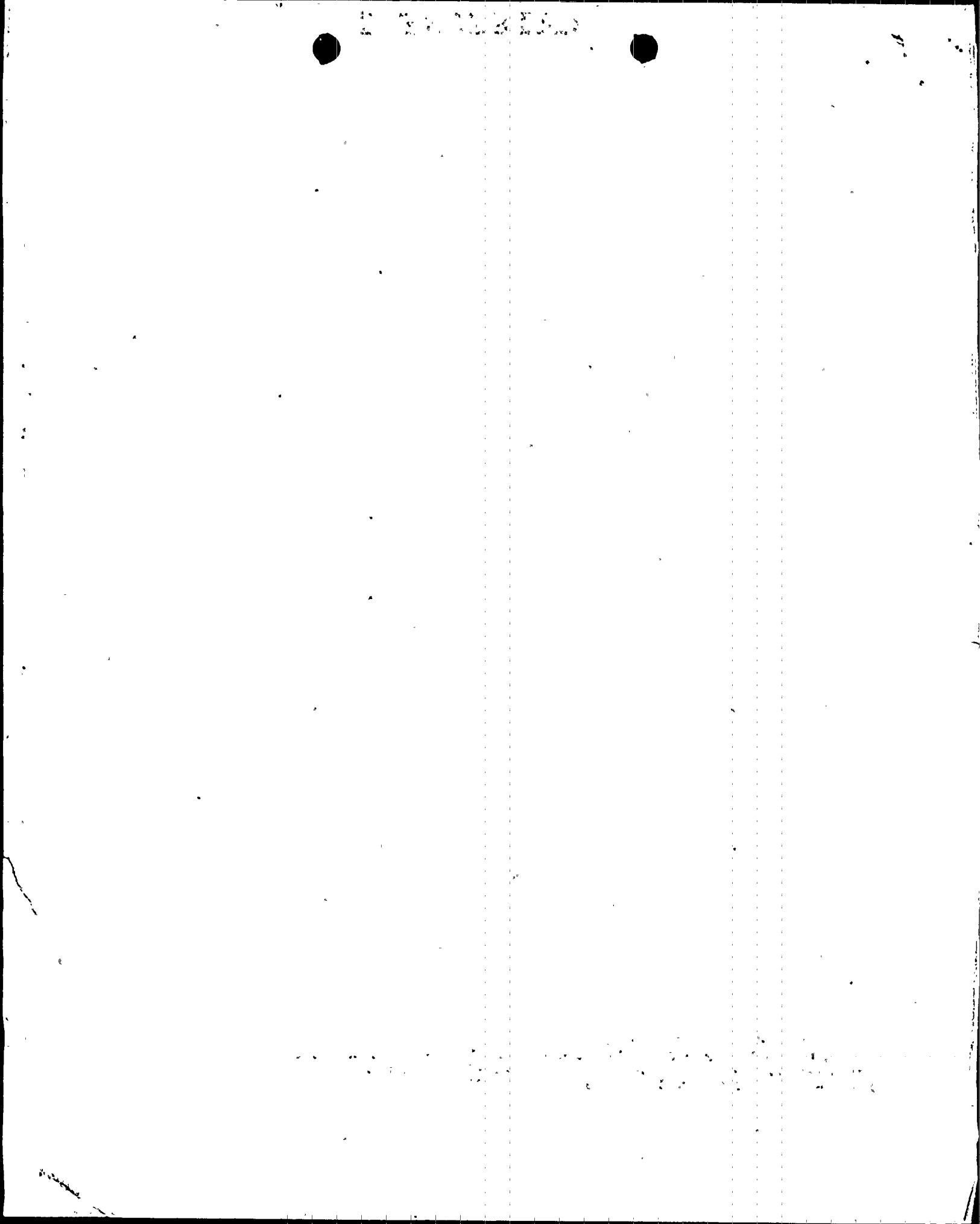
1

D
O
C
U
M
E
N
T

NOTE TO ALL "RIDS" RECIPIENTS:
PLEASE HELP US TO REDUCE WASTE! CONTACT THE DOCUMENT CONTROL DESK,
ROOM OWFN 5D-5 (EXT. 415-2083) TO ELIMINATE YOUR NAME FROM
DISTRIBUTION LISTS FOR DOCUMENTS YOU DON'T NEED!

TOTAL NUMBER OF COPIES REQUIRED: LTR 14 ENCL 13

1 2 3 4 5 6 7 8 9 10





Tennessee Valley Authority, Post Office Box 2000, Decatur, Alabama 35609-2000

July 11, 1997

U.S. Nuclear Regulatory Commission
ATTN: Document Control Desk
Washington, D.C. 20555

Gentlemen:

In the Matter of) Docket No. 50-296
Tennessee Valley Authority)

BROWNS FERRY NUCLEAR PLANT (BFN) - UNIT 3 - GENERIC LETTER (GL) 88-20, SUPPLEMENT 4, INDIVIDUAL PLANT EXAMINATION OF EXTERNAL EVENTS (IPEEE) FOR SEVERE ACCIDENT VULNERABILITIES - SUBMITTAL OF INTERNAL FIRES ANALYSIS (TAC NO. M83597)

The enclosure to this letter provides the BFN Unit 3 internal fires analysis in accordance with TVA's commitment to GL 88-20, Supplement 4. TVA committed to submit the Unit 3 internal fires IPEEE within one hundred twenty days after the first refueling outage following restart from the extended recovery outage. This refueling outage (cycle 7) was completed on March 13, 1997.

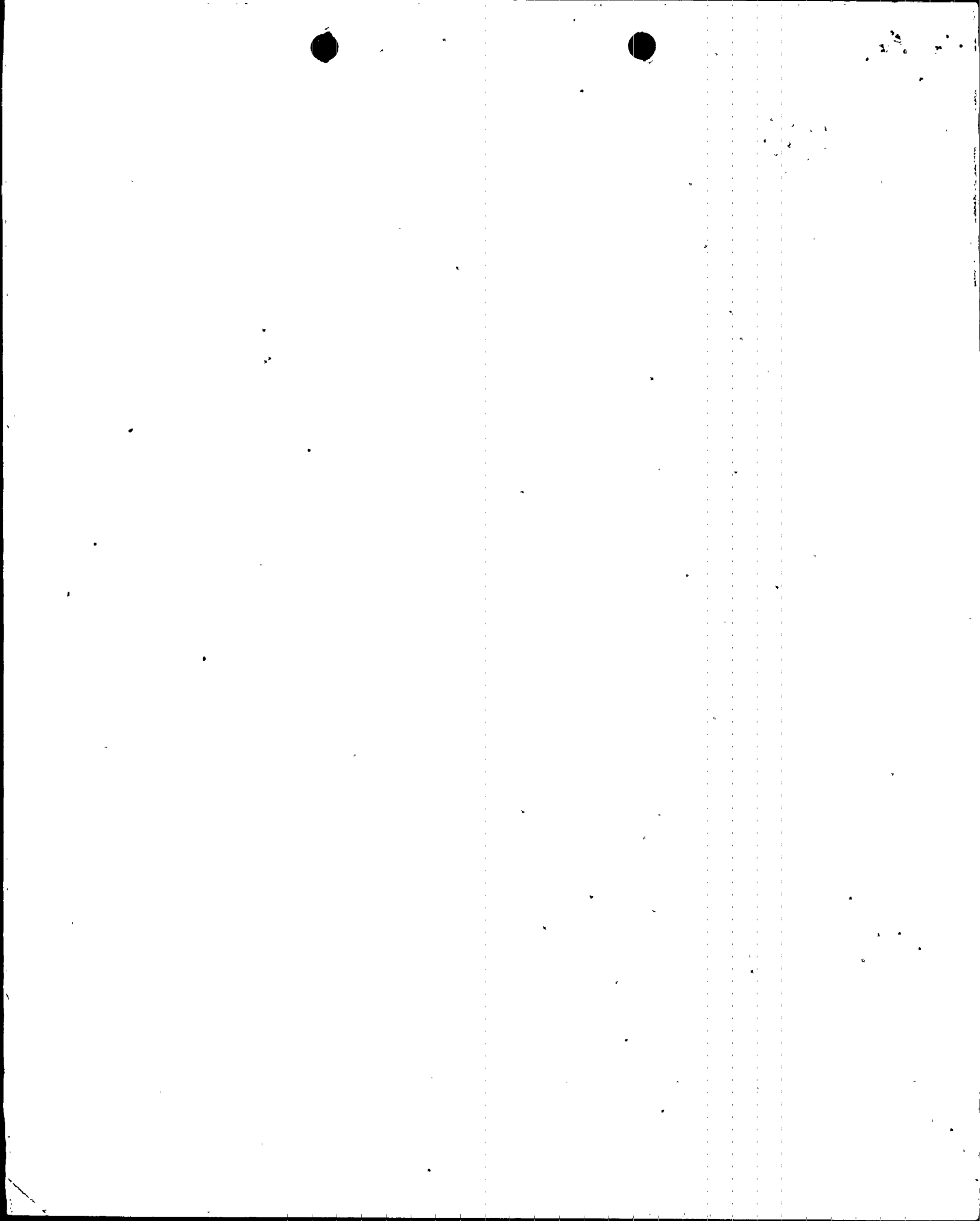
The internal fires analysis for BFN Unit 3 was performed in the same manner as Unit 2, using a progressive screening analysis based on the Fire Induced Vulnerability Evaluation methodology developed by the Electric Power Research Institute. TVA's analysis showed that there are no fire induced vulnerabilities associated with the continued operation of BFN Unit 3.

The content and format of the enclosed report reflect the guidance of NUREG-1407. The risk assessment process used to generate the report considered the objectives described in GL 88-20, Supplement 4, which provide for (1) an appreciation

9707170126 970711
PDR ADDCK 05000296
P PDR



2011/1/1



U.S. Nuclear Regulatory Commission

Page 2

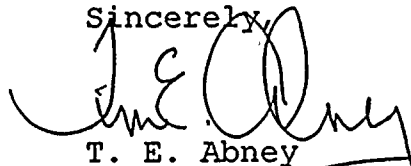
July 11, 1997

of severe accident behavior, (2) an understanding of the likely event sequences, (3) a qualitative understanding of the likelihood of core damage and fission product releases, and (4) modifications, where appropriate, of hardware and procedures that would help prevent or mitigate severe accidents.

TVA has previously submitted the BFN Units 1, 2, and 3 IPEEE analysis of high winds, external floods, and nearby facilities/transportation accidents and the Unit 2 internal fires analysis by letter dated July 24, 1995. The Units 2 and 3 seismic IPEEE was submitted by TVA letter dated June 28, 1996. As previously committed, the internal fires and seismic IPEEE for BFN Unit 1 will be submitted prior to restart.

There are no new commitments contained in this letter. If you have any questions regarding this report, please contact me at (205) 729-2636.

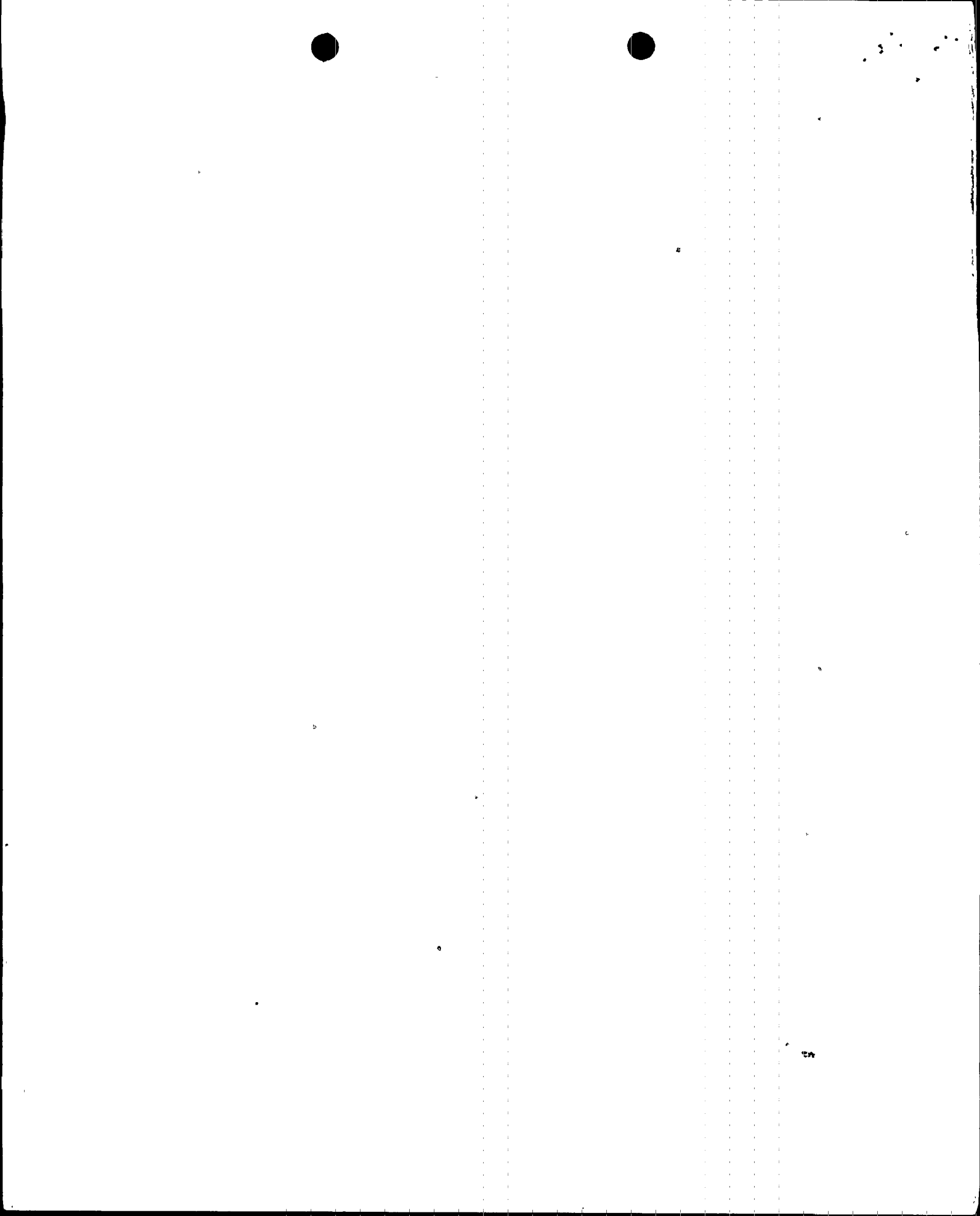
Sincerely,



T. E. Abney
Manager of Licensing
and Industry Affairs

Enclosure

cc: See page 3



U.S. Nuclear Regulatory Commission

Page 3

July 11, 1997

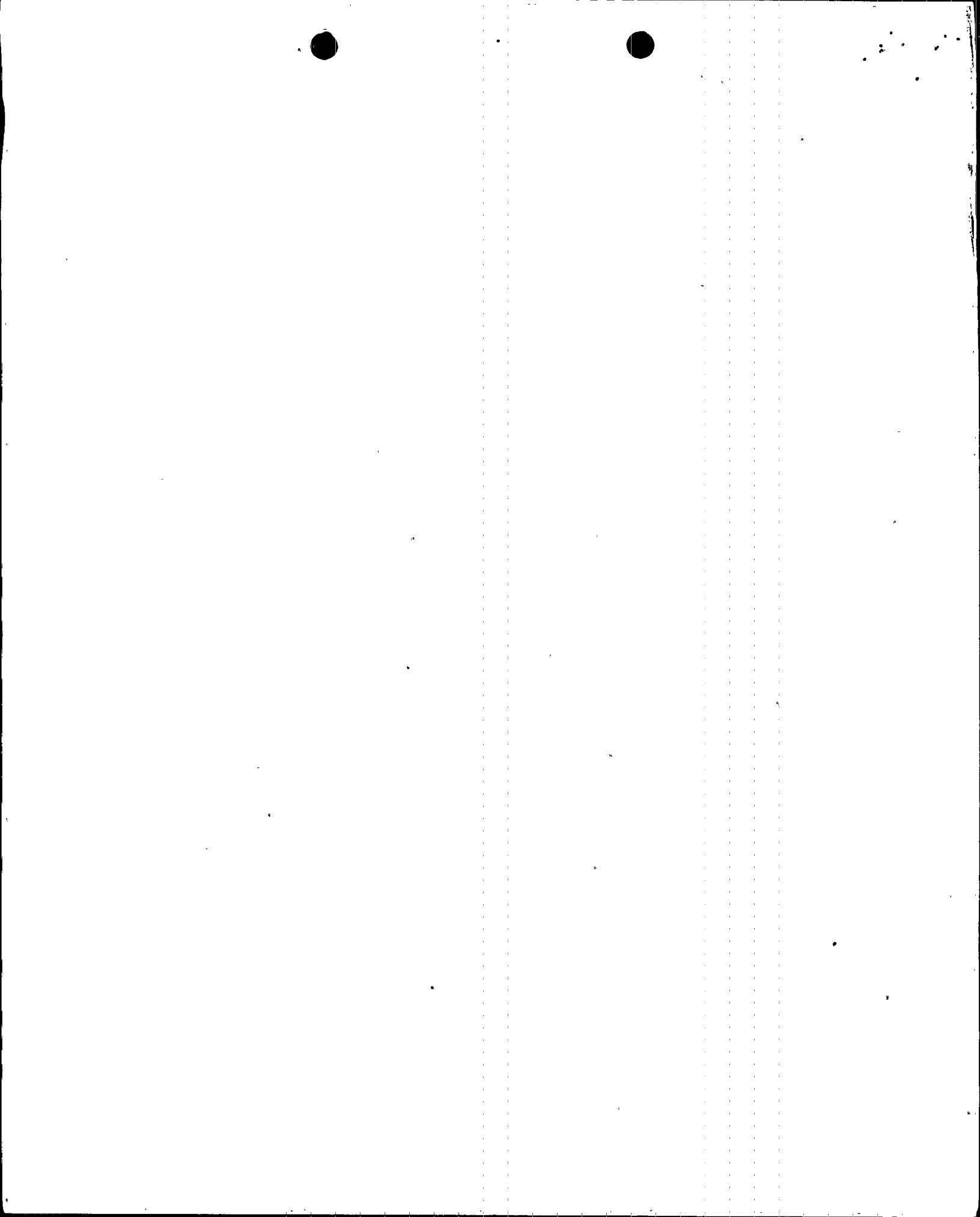
Enclosure

cc (Enclosure):

Mr. Mark S. Lesser, Branch Chief
U.S. Nuclear Regulatory Commission
Region II
61 Forsyth Street, S.W.
Suite 23T85
Atlanta, Georgia 30303

NRC Resident Inspector
Browns Ferry Nuclear Plant
10833 Shaw Road
Athens, Alabama 35611

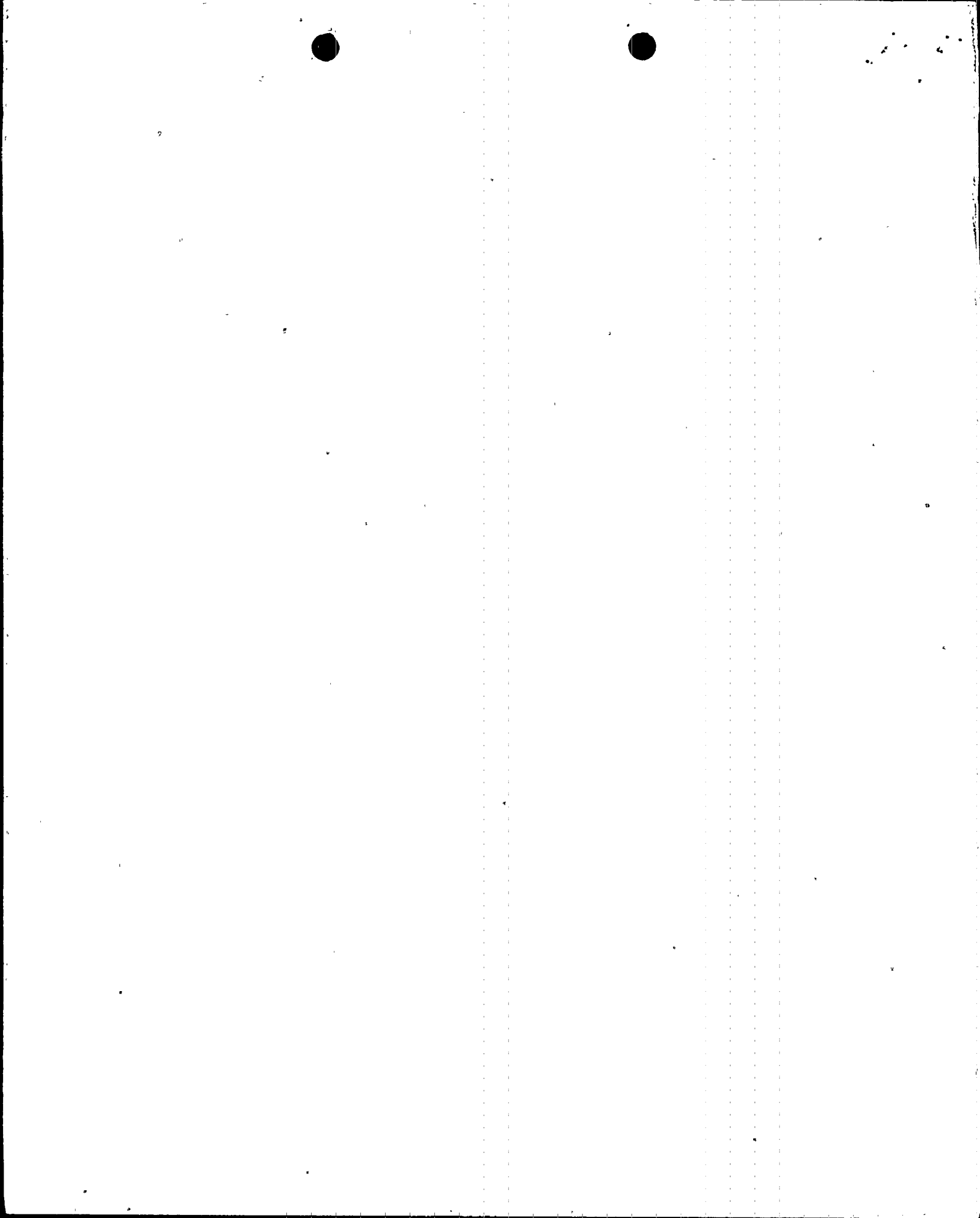
Mr. J. F. Williams, Project Manager
U.S. Nuclear Regulatory Commission
One White Flint, North
11555 Rockville Pike
Rockville, Maryland 20852



ENCLOSURE

TENNESSEE VALLEY AUTHORITY
BROWNS FERRY NUCLEAR PLANT (BFN)
UNIT 3
GENERIC LETTER 88-20, SUPPLEMENT 4, INDIVIDUAL
PLANT EXAMINATION OF EXTERNAL EVENTS (IPEEE) FOR SEVERE
ACCIDENT VULNERABILITIES
INTERNAL FIRES ANALYSIS

(SEE ATTACHED)





Tennessee Valley Authority, Post Office Box 2000, Decatur, Alabama 35609-2000

July 11, 1997

U.S. Nuclear Regulatory Commission
ATTN: Document Control Desk
Washington, D.C. 20555

Gentlemen:

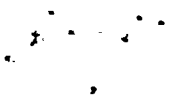
In the Matter of) Docket No. 50-296
Tennessee Valley Authority)

BROWNS FERRY NUCLEAR PLANT (BFN) - UNIT 3 - GENERIC LETTER (GL) 88-20, SUPPLEMENT 4, INDIVIDUAL PLANT EXAMINATION OF EXTERNAL EVENTS (IPEEE) FOR SEVERE ACCIDENT VULNERABILITIES - SUBMITTAL OF INTERNAL FIRES ANALYSIS (TAC NO. M83597)

The enclosure to this letter provides the BFN Unit 3 internal fires analysis in accordance with TVA's commitment to GL 88-20, Supplement 4. TVA committed to submit the Unit 3 internal fires IPEEE within one hundred twenty days after the first refueling outage following restart from the extended recovery outage. This refueling outage (cycle 7) was completed on March 13, 1997.

The internal fires analysis for BFN Unit 3 was performed in the same manner as Unit 2, using a progressive screening analysis based on the Fire Induced Vulnerability Evaluation methodology developed by the Electric Power Research Institute. TVA's analysis showed that there are no fire induced vulnerabilities associated with the continued operation of BFN Unit 3.

The content and format of the enclosed report reflect the guidance of NUREG-1407. The risk assessment process used to generate the report considered the objectives described in GL 88-20, Supplement 4, which provide for (1) an appreciation



U.S. Nuclear Regulatory Commission

Page 2

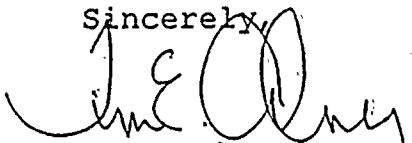
July 11, 1997

of severe accident behavior, (2) an understanding of the likely event sequences, (3) a qualitative understanding of the likelihood of core damage and fission product releases, and (4) modifications, where appropriate, of hardware and procedures that would help prevent or mitigate severe accidents.

TVA has previously submitted the BFN Units 1, 2, and 3 IPEEE analysis of high winds, external floods, and nearby facilities/transportation accidents and the Unit 2 internal fires analysis by letter dated July 24, 1995. The Units 2 and 3 seismic IPEEE was submitted by TVA letter dated June 28, 1996. As previously committed, the internal fires and seismic IPEEE for BFN Unit 1 will be submitted prior to restart.

There are no new commitments contained in this letter. If you have any questions regarding this report, please contact me at (205) 729-2636.

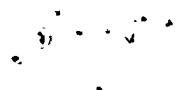
Sincerely,



T. E. Abney
Manager of Licensing
and Industry Affairs

Enclosure

cc: See page 3



U.S. Nuclear Regulatory Commission
Page 3
July 11, 1997

Enclosure

cc (Enclosure):

Mr. Mark S. Lesser, Branch Chief
U.S. Nuclear Regulatory Commission
Region II
61 Forsyth Street, S.W.
Suite 23T85
Atlanta, Georgia 30303

NRC Resident Inspector
Browns Ferry Nuclear Plant
10833 Shaw Road
Athens, Alabama 35611

Mr. J. F. Williams, Project Manager
U.S. Nuclear Regulatory Commission
One White Flint, North
11555 Rockville Pike
Rockville, Maryland 20852



ENCLOSURE

TENNESSEE VALLEY AUTHORITY
BROWNS FERRY NUCLEAR PLANT (BFN)
UNIT 3

GENERIC LETTER 88-20, SUPPLEMENT 4, INDIVIDUAL
PLANT EXAMINATION OF EXTERNAL EVENTS (IPEEE) FOR SEVERE
ACCIDENT VULNERABILITIES

INTERNAL FIRES ANALYSIS

(SEE ATTACHED)



1944
1945
1946
1947
1948
1949
1950
1951
1952
1953
1954
1955
1956
1957
1958
1959
1960
1961
1962
1963
1964
1965
1966
1967
1968
1969
1970
1971
1972
1973
1974
1975
1976
1977
1978
1979
1980
1981
1982
1983
1984
1985
1986
1987
1988
1989
1990
1991
1992
1993
1994
1995
1996
1997
1998
1999
2000
2001
2002
2003
2004
2005
2006
2007
2008
2009
2010
2011
2012
2013
2014
2015
2016
2017
2018
2019
2020
2021
2022
2023
2024
2025