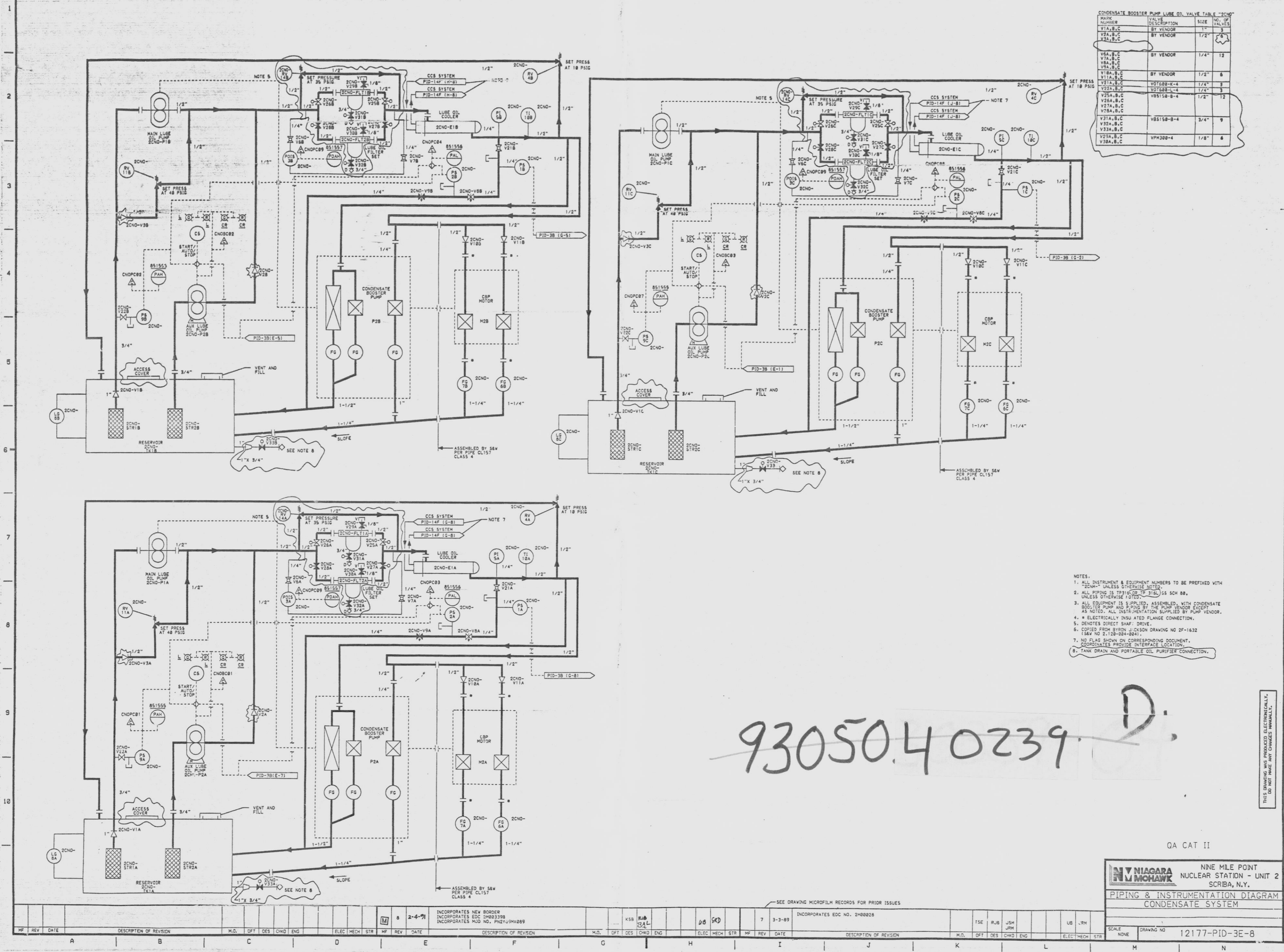


12177-PID-3E-8



MARK NUMBER	VALVE DESCRIPTION	SIZE	NO. OF VALVES
V2A,B,C	BY VENDOR	1/2"	3
V2B,B,C	BY VENDOR	1/2"	3
V2A,B,C	BY VENDOR	1/4"	12
V2E,B,C	BY VENDOR	1/2"	3
V2F,B,C	BY VENDOR	1/2"	3
V2G,B,C	BY VENDOR	1/2"	3
V2H,B,C	BY VENDOR	3/4"	9
V2I,B,C	BY VENDOR	1/2"	3
V2J,B,C	BY VENDOR	1/2"	3
V2K,B,C	BY VENDOR	1/2"	3
V2L,B,C	BY VENDOR	1/2"	3
V2M,B,C	BY VENDOR	1/2"	3

- 1. ALL INSTRUMENT & EQUIPMENT NUMBERS TO BE PREFIXED WITH "2CNO" UNLESS OTHERWISE NOTED.
- 2. ALL PIPING IS TO BE 316L SS SCH 80, UNLESS OTHERWISE NOTED.
- 3. ALL EQUIPMENT IS SUPPLIED, ASSEMBLED, WITH CONDENSATE BOOSTER PUMP AND PIPING BY THE PUMP VENDOR EXCEPT AS NOTED. ALL INSTRUMENTATION SUPPLIED BY PUMP VENDOR.
- 4. * ELECTRICALLY INSULATED FLANGE CONNECTION.
- 5. DENOTES DIRECT SHAFT DRIVE.
- 6. COPIED FROM BYRON JACKSON DRAWING NO 2F-1632 (REV NO 2, 12/28/84-804).
- 7. NO FLAG SHOWN ON CORRESPONDING DOCUMENT - COORDINATES PROVIDE INTERFACE LOCATION.
- 8. TANK DRAIN AND PORTABLE OIL PURIFIER CONNECTION.

93050.40239 D.

QA CAT II

		NINE MILE POINT NUCLEAR STATION - UNIT 2 SCRBA, N.Y.
PIPING & INSTRUMENTATION DIAGRAM CONDENSATE SYSTEM		
SCALE NONE	DRAWING NO	12177-PID-3E-8

NO. REV. DATE	DESCRIPTION OF REVISION	M.O. DFT DES CHKD END	ELEC MECH STR	NO. REV. DATE	DESCRIPTION OF REVISION	M.O. DFT DES CHKD END	ELEC MECH STR	NO. REV. DATE	DESCRIPTION OF REVISION	M.O. DFT DES CHKD END	ELEC MECH STR

THIS DRAWING WAS PRODUCED ELECTRONICALLY. DO NOT MAKE ANY CHANGES MANUALLY.