

REGULATORY INFORMATION DISTRIBUTION SYSTEM (RIDS)

ACCESSION NBR: 8102090243 DOC. DATE: 81/02/02 NOTARIZED: NO DOCKET #  
 FACIL: 50-410 Nine Mile Point Nuclear Station, Unit 2, Niagara Moho 05000410  
 AUTH. NAME: AUTHOR AFFILIATION  
 RHODE, G.K. Niagara Mohawk Power Corp.  
 RECIP. NAME: RECIPIENT AFFILIATION  
 CARLSON, R.T. Region 1, Philadelphia, Office of the Director

SUBJECT: Interim deficiency rept re possible future movement of radwaste bldg geologic feature. Corrections to 791204 initial rept encl. Forwards "Geologic Investigation: Radwaste Thrust Structure." Rept available in Central Files only.

DISTRIBUTION CODE: B019S COPIES RECEIVED: LTR 1 ENCL 1 SIZE: 2+750  
 TITLE: Construction Deficiency Report: (10CFR50.55E)

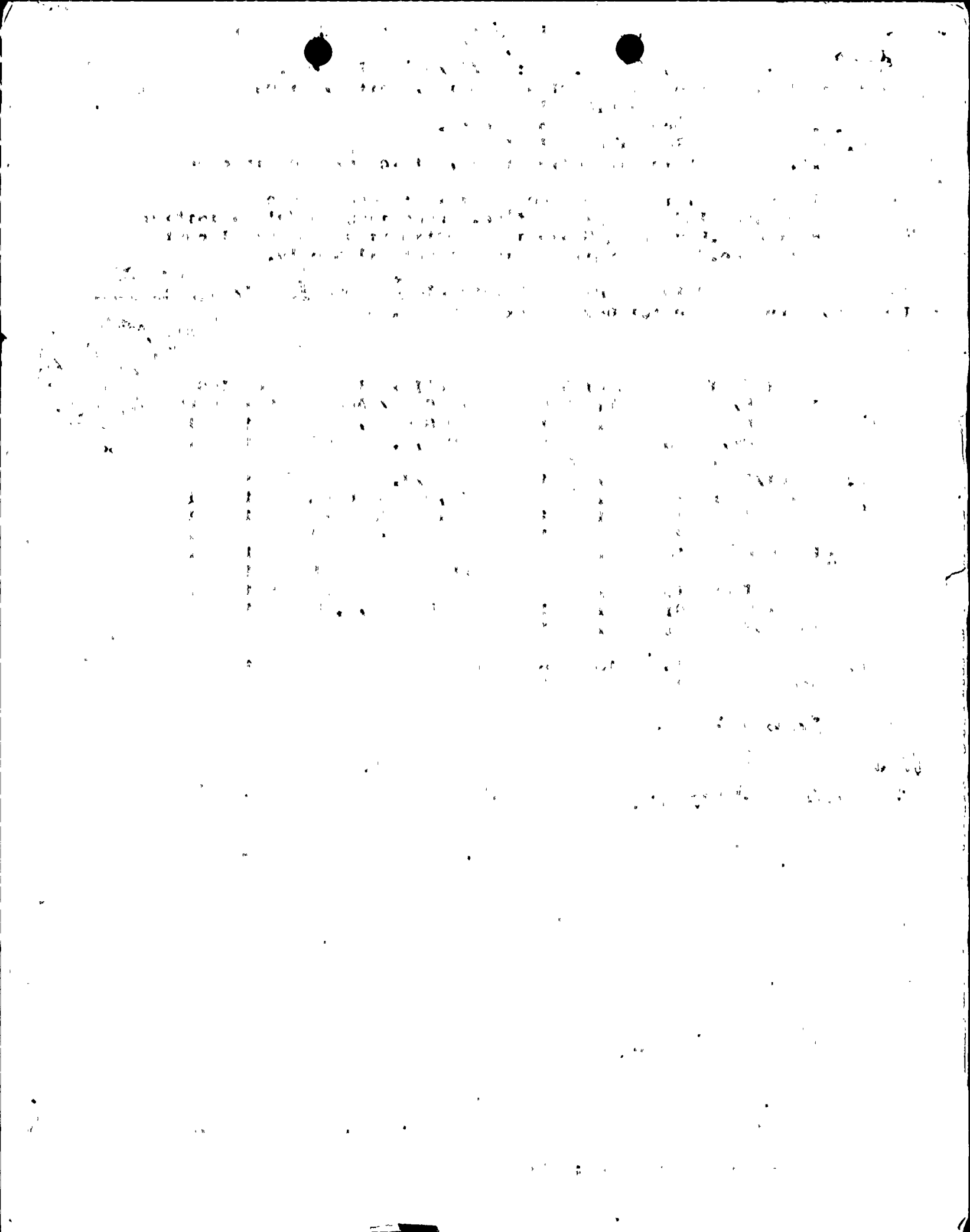
NOTES:

ACTION:	RECIPIENT ID CODE/NAME		COPIES		RECIPIENT ID CODE/NAME	COPIES		
	LTR	ENCL	LTR	ENCL		LTR	ENCL	
INTERNAL:	A/D LICENSNG	04	1	1	YOUNGBLOOD, B	05	1	1
	RUSHBROOK, M.	06	1	1	KIPER, K.	07	1	1
INTERNAL:	AD/RCI/IE	17	1	1	ASLBP/J.HARD		1	1
	D/DIR HUM FAC	15	1	1	DIR, DIV OF LIC		1	1
	EDO & STAFF	19	1	1	EQUIP QUAL BR	11	1	1
	HYD/GEO BR	22	1	1	I&E	09	1	1
	LIC QUAL BR	12	1	1	MPA	20	1	1
	NRC PDR	02	1	1	OELD	21	1	1
	PROG/TEST REV	13	1	1	QA BR	14	1	1
	REG FILE	01	1	1	RUTHERFORD, W.	IE	1	1
STANDRDS DEV	21	1	1					
EXTERNAL:	ACRS	16	16	16	LPDR	03	1	1
	NSIC	08	1	1				

*m/A*  
*1*  
*Report in Reports Jacket*

SEND Encl. to:  
 TERA (Return to Reg  
 Files after filming)

FEB 10 1981



February 2, 1981

Office of Inspection and Enforcement  
Region I  
Attention: Mr. R. T. Carlson, Chief Reactor  
Construction and Engineering Support Branch  
U.S. Nuclear Regulatory Commission  
631 Park Avenue  
King of Prussia, PA 19406

REGISTRATION  
UNIT'S UNIT  
SERVICES  
1981 FEB 6 PM 10 14

Dear Mr. Carlson:

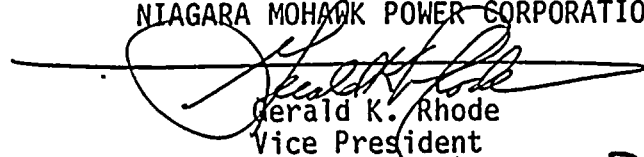
Re: Nine Mile Point Unit 2  
Docket No. 50-410

A potential 50.55(e) deficiency involving the possible future movement of the Nine Mile Point Unit 2 Radwaste Building geologic feature was initially reported to the Nuclear Regulatory Commission on December 4, 1979. Enclosed is a report regarding the geologic investigation of the Nine Mile Point Unit 2 Radwaste Thrust Structure. Also enclosed are corrections to this report and to Niagara Mohawk's response to geologic information Request Q361.1.

This report provides the data and analyses to confirm the conclusions made in response to Nuclear Regulatory Commission's Office of Nuclear Reactor Regulation's geologic information Request Q361.1, which was transmitted to you in our interim 50.55(e) report dated July 24, 1980. Since the geologic investigation of the Radwaste Thrust Structure is not completed, this report serves as an interim report. Another interim 10CFR50.55(e) report will be submitted by June 30, 1981.

Very truly yours,

NIAGARA MOHAWK POWER CORPORATION



Gerald K. Rhode  
Vice President

System Project Management

B019  
S  
//

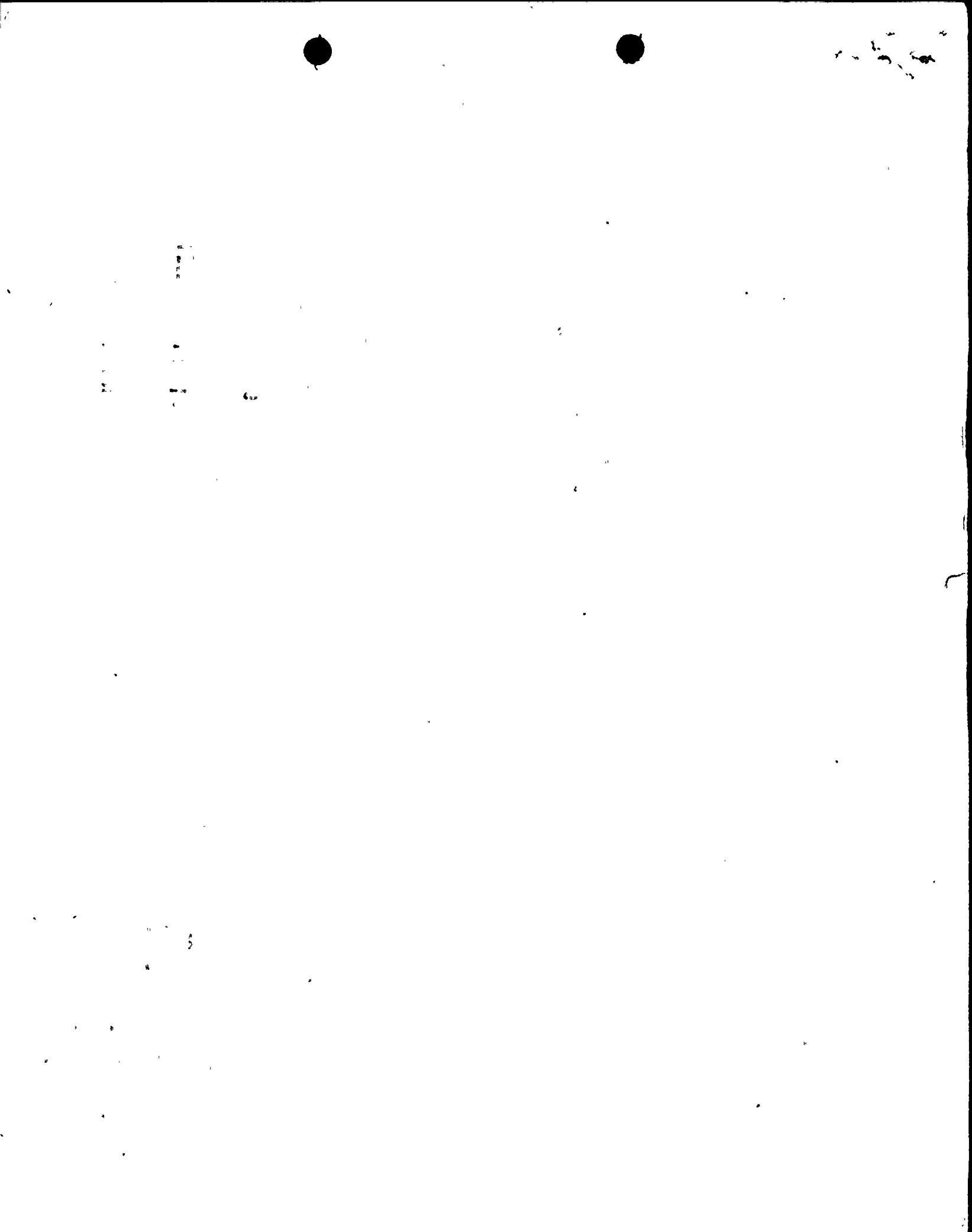
Enclosure

xc: Director of Inspection and Enforcement  
U.S. Nuclear Regulatory Commission  
Washington, D.C. 20555 (w/attachment)

SEND Encl. to:  
TERA (RETURN to REG  
Files after filming)

8102090243

S



4. Post-Pleistocene (Holocene) movements have been small if they have occurred at all. It cannot be demonstrated that no Holocene movements have occurred, as no reference features (e.g. dated infilling sediments) extend entirely across the zones of disturbance.
5. Future movements along the structure are not likely to occur. Further relief of the limited amounts of strain now in the rocks will be distributed in the affected ground as dilation and small movements along fractures and bedding surfaces. The Radwaste Structure is so nearly dead at present levels of exposure that its participation in such future movements would amount to no more than a small fraction of an inch ( $\leq 1/4$  inch). It is still the judgmental opinion of Dames and Moore that the movement on the Radwaste Thrust structure would be very slight amounting to either a negligible movement or at the most a small fraction of an inch. However, Dames and Moore has recently pointed out that the state of the art for predicting future movement of the Radwaste structure does not enable them to give specific assurance that the above judgment does indeed represent a maximum credible movement. Consequently, additional mathematical model studies have been conducted which lead Dames and Moore to conclude that one inch is a conservative allowance for future maximum credible movement. Therefore, an allowance of one inch will be used for design purposes.
6. The Radwaste Structure is not seismotectonic."

Based on these conclusions it was judged that movements of the Radwaste Structure (if any) would be of no consequence to the operation of the plant.

