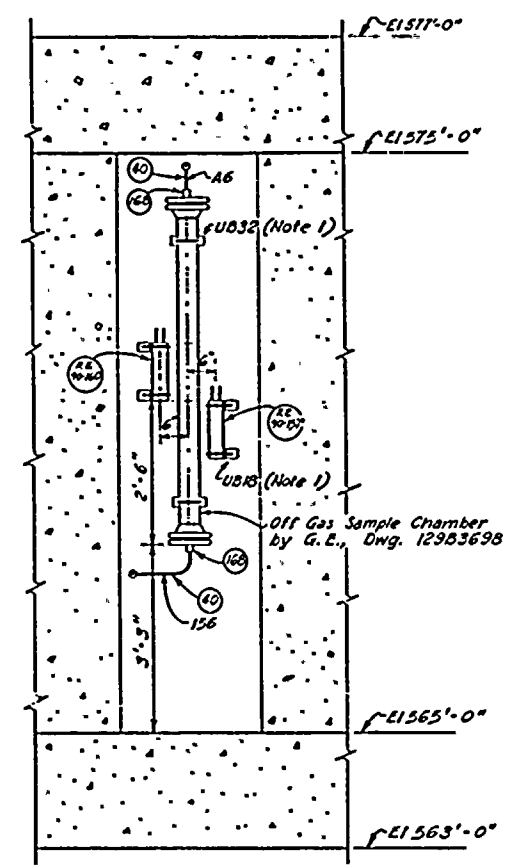
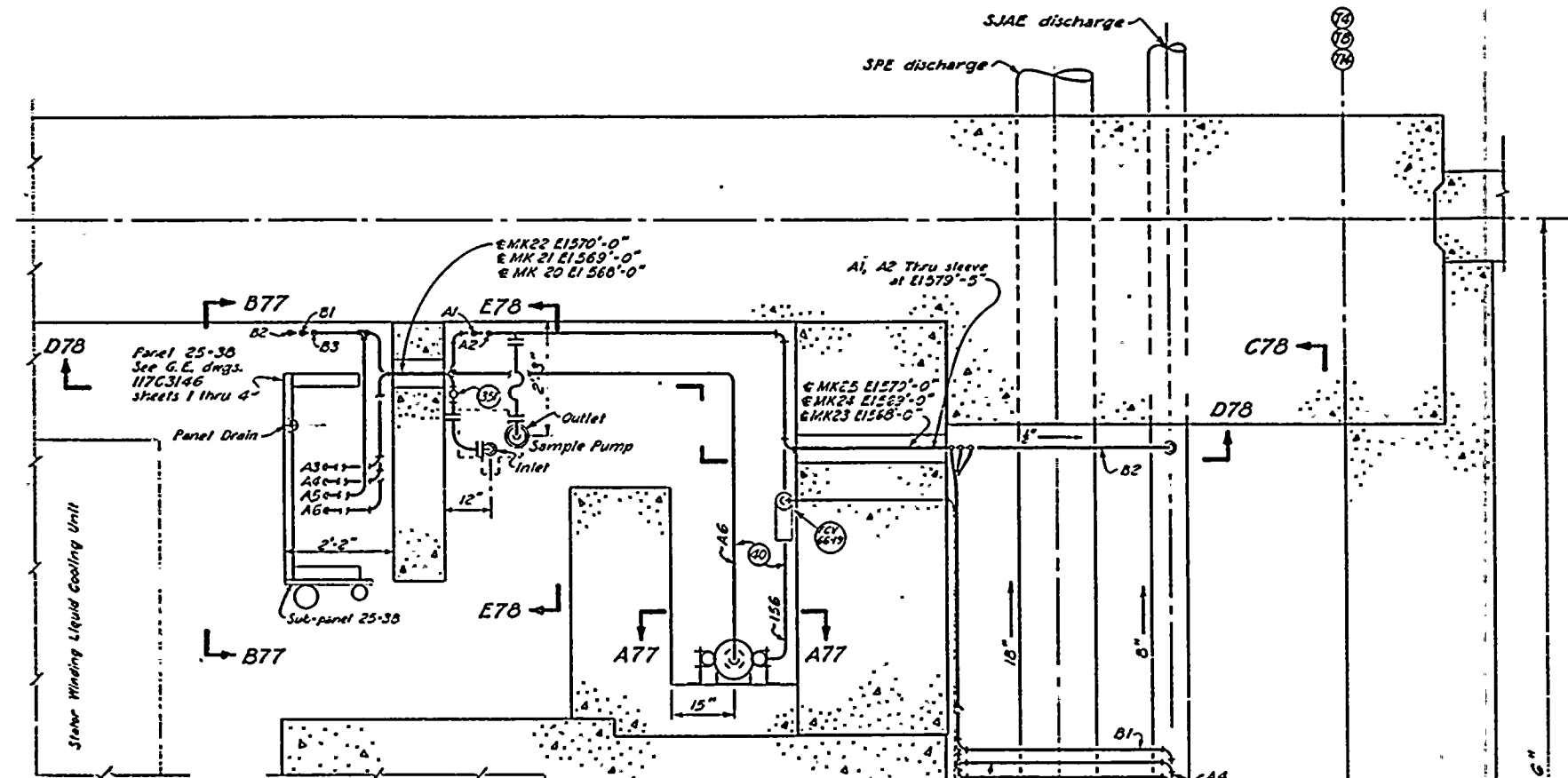


SECTION F77-F77
 SUB-PANEL 25-30
 Not to scale

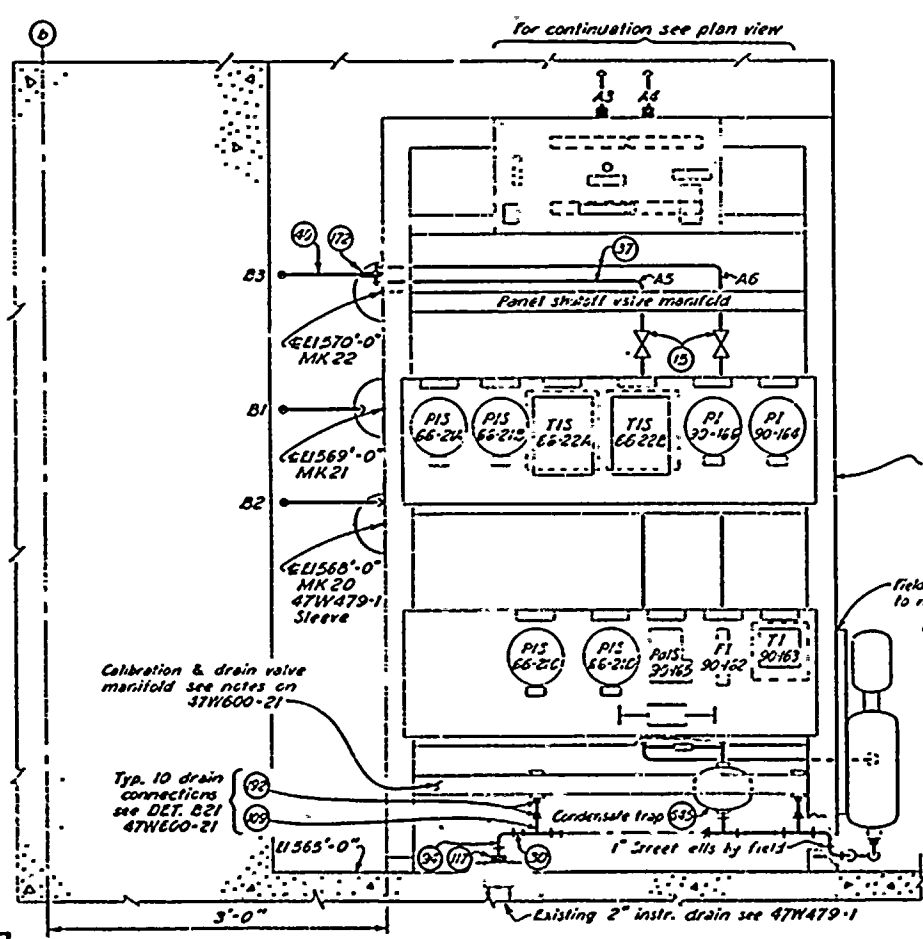
NOTE: OPERATION: with low water level in float chamber PCV-90-279 is open. The cutoff pressure of PCV-90-279 is zero. On Hi level LS-90-278 vents the control pressure. PCV-90-279 closes, PCV-90-278 provides a positive pressure to force condensate from float chamber.



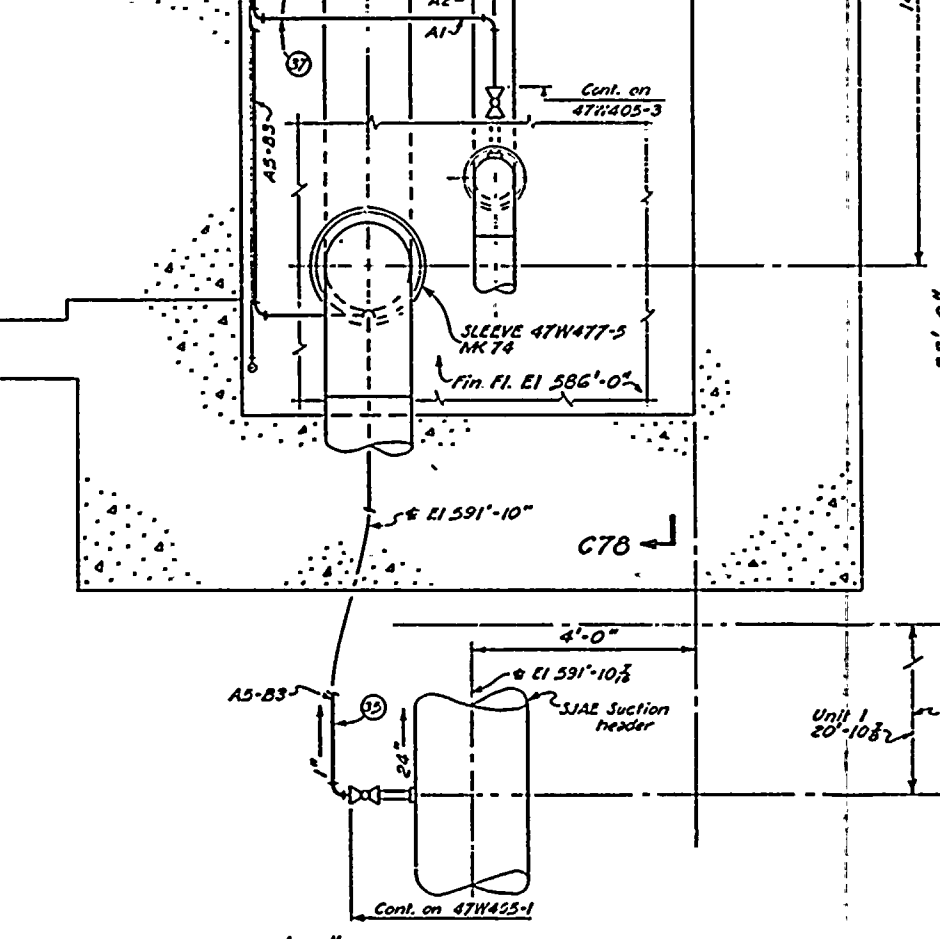
SECTION A77-A77
 Scale: 3/4" = 1'-0"

- NOTES:
- UB38 & UB32 are U-Bolt hangers per TVA Gen. Std. Dwg. 30W615-4. Field to provide rubber strip to serve as a grommet to prevent deformation of radiation detectors.
 - Connections to Pnl. 25-40 are called out as:
 G.L. dwg. 117C2358 as:
 B1 - Sample Inlet
 B2 - Vacuum Exhaust
 B3 - Condenser Vacuum (Outlet)

8805160143



SECTION B77-B77
 PANEL 25-30
 Scale: 1 1/2" = 1'-0"



PLAN, EL 565'-0"
 UNIT 1 AS SHOWN UNITS 2 & 3 OPPOSITE HAND
 Scale: 3/4" = 1'-0"

TI APERTURE CARD

3	LS60	4-12-76	204	204	204	204	204	204	204	204	204	204	204	204	204	204	204	204	204
ADDED	PCV-90-278																		
2	M 9A	2-12-78	204	204	204	204	204	204	204	204	204	204	204	204	204	204	204	204	204
1	10M6, 1033	10-25-73	204	204	204	204	204	204	204	204	204	204	204	204	204	204	204	204	204

POWERHOUSE UNITS 1-3			
MECHANICAL INSTRUMENTS AND CONTROLS			
BROWNS FERRY NUCLEAR PLANT TENNESSEE VALLEY AUTHORITY DIVISION OF ENGINEERING DESIGN			
SUBMITTED	RECOMMENDED	APPROVED	
<i>[Signature]</i>	<i>[Signature]</i>	<i>[Signature]</i>	
KNOXVILLE	2-16-71	87 M 4	47W600-77 R3

