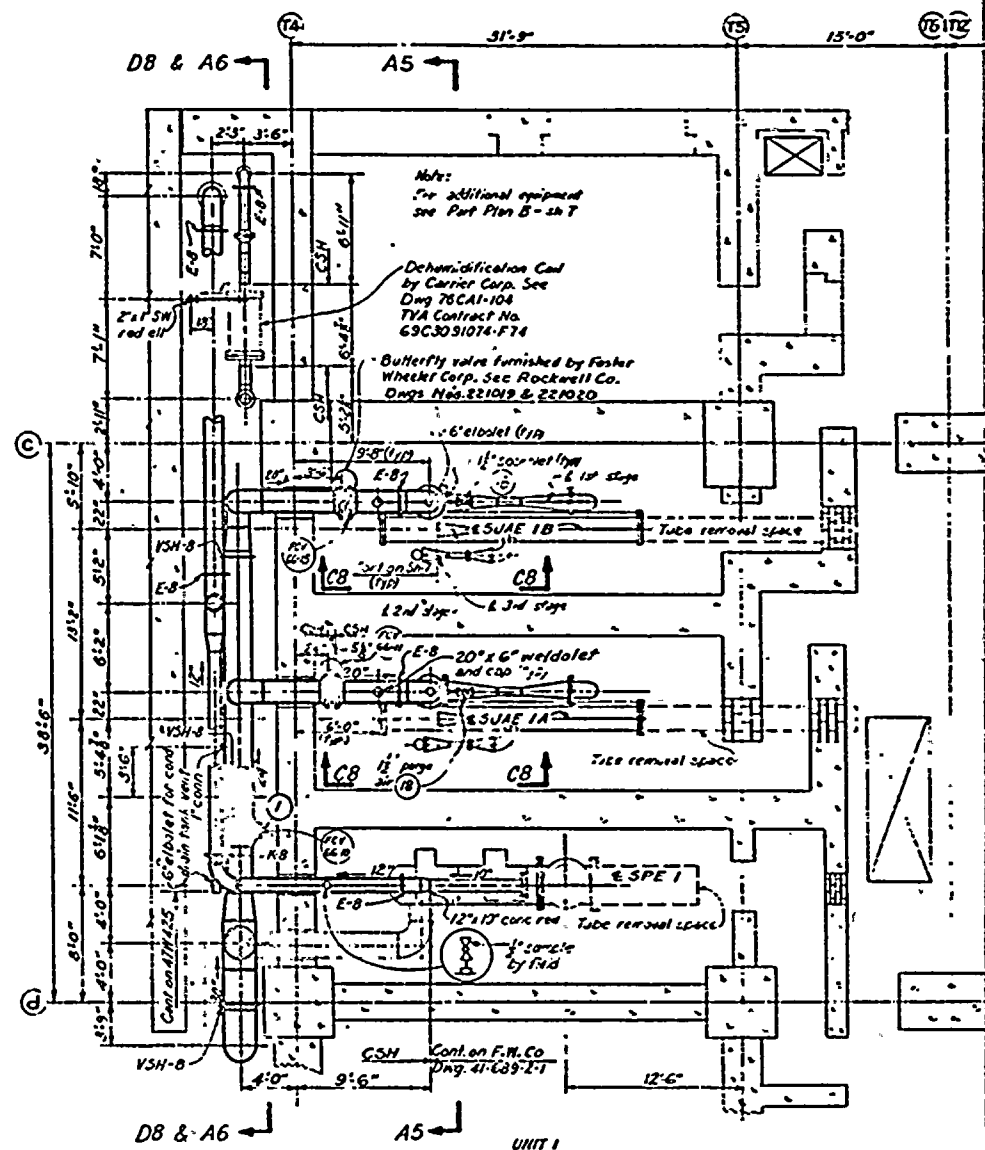
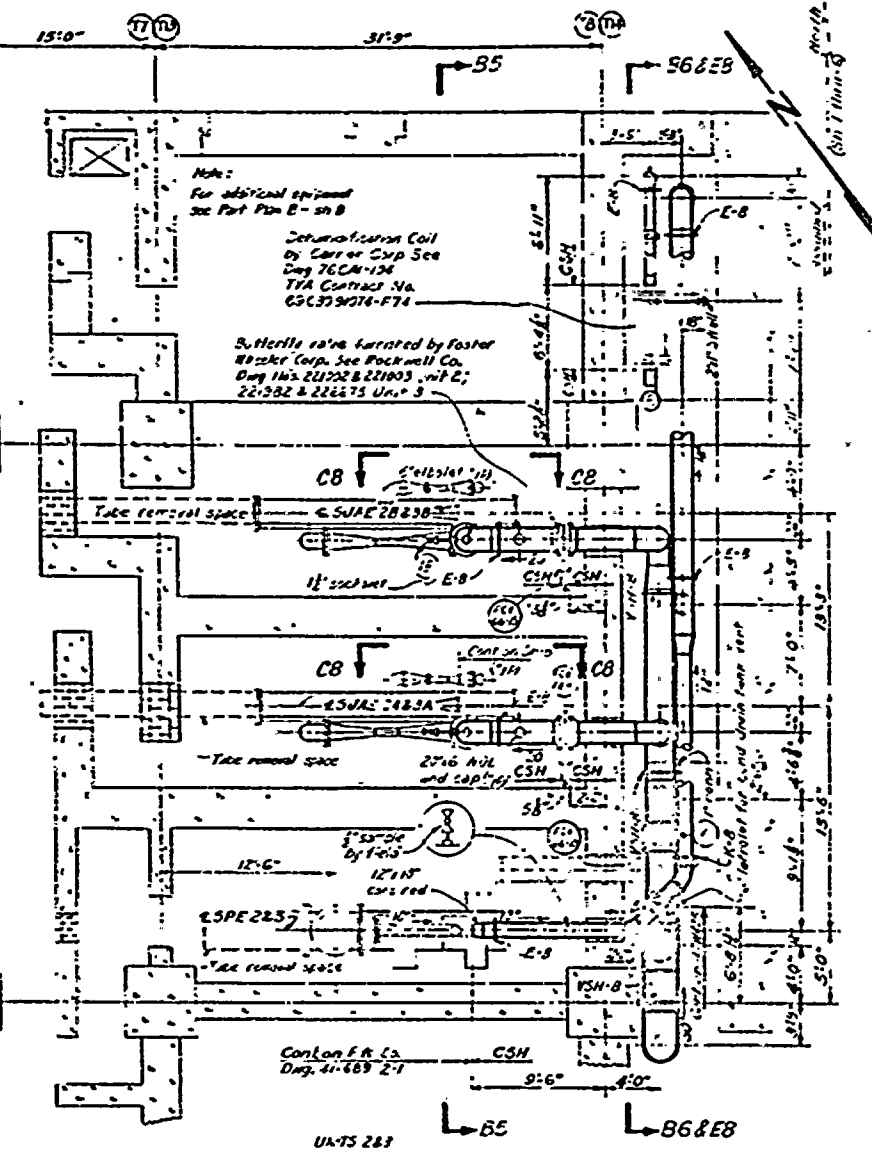


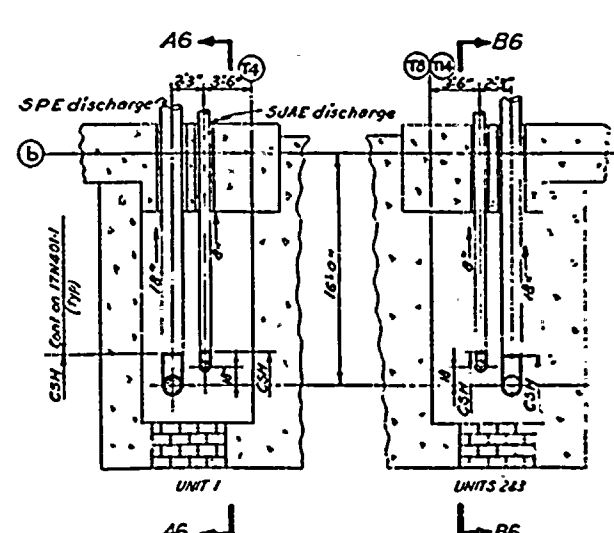
PLAN-EL 586.0



PLAN-EL 565.0



PLAN-EL 586.0



TI APERTURE CARD

NOTES (Continued)

- 15. Steam at Air Ejector for Unit 1 & 2 shall be max. 100 psia
 - 16. [Symbol] denotes design pump and pressure at pump or 2-3.
 - 17. Field noted draft and rest lines connected to off-gassing and equipment shall be located and supported to allow for maximum thermal expansion in any direction.
- NOTES (for sheets 4 thru 8 only):
1. For general specifications see TIA Specification No 9463, Contract No. 50-37-9462.
 2. For detailed specifications see TIA bill of material 47M405.
 3. CSM denotes "Contract shop work".
 4. All flanges shall be 150-lb USASI welding neck unless otherwise noted.
 5. All welding nuts, corrosion flanges, bolts, nuts, and gaskets required at contact starting and stopping points shall be furnished by piping contractor unless otherwise noted.
 6. H 6, etc. denotes flange, bolt, and type. Refer to TIA nomenclature drawings S-M-4-3242-2 through -5.
 7. For valve numbers F21-66-1 through F21-66-19, see TIA Specification No. 9665, Contract No. 50-37-9665.
 8. 50, etc. denotes pipe density or size with number as specified in TIA bill of material 47M405 series.
 9. For test and pressure corrections see 47A and 47AG.
 10. For auxiliary connections, drains, and vents connections see 47AT.
 11. For details of pipe joints for pipe see 47S-B.
 12. For valves designed thus far, etc. refer to control diagram 47M405-66. These numbers shall have the unit number as a prefix, i.e. 1-F21-66-2, 2-F21-66-2 etc.
 13. For valves for equipment in this system refer to unit valve connection diagrams.
 14. For connections see 47A3 except as noted.

REFERENCE DRAWINGS: (P-4-516, 47M405-BILL OF MATERIAL (pipes and specifications))

REFERENCE DRAWINGS: (P-219, 47M405-1-BILL OF MATERIAL (pipes), 47M405-2-BILL OF MATERIAL (connections), 47M405-3-BILL OF MATERIAL (pipes and nuts))

47M400-BILL OF MATERIAL (Main Steam), 47M404-BILL OF MATERIAL (Pipes and Pumps), 47M405-R-BILL OF MATERIAL (RINGS), 47M405-13-BILL OF MATERIAL (WISCI)

COMPANION DRAWINGS: 47M405 SER. 65

TURBINE BLDG UNITS 1, 2 & 3		
MECHANICAL OFF. GAS SYSTEM		
BROWNS FERRY NUCLEAR PLANT TENNESSEE VALLEY AUTHORITY DIVISION OF ENGINEERING DESIGN		
SUBMITTED J.C. Galt	RECOMMENDED J.S. Galt	APPROVED J.S. Galt
KNOXVILLE	8-5-55	47W435-L-2

8805160127

