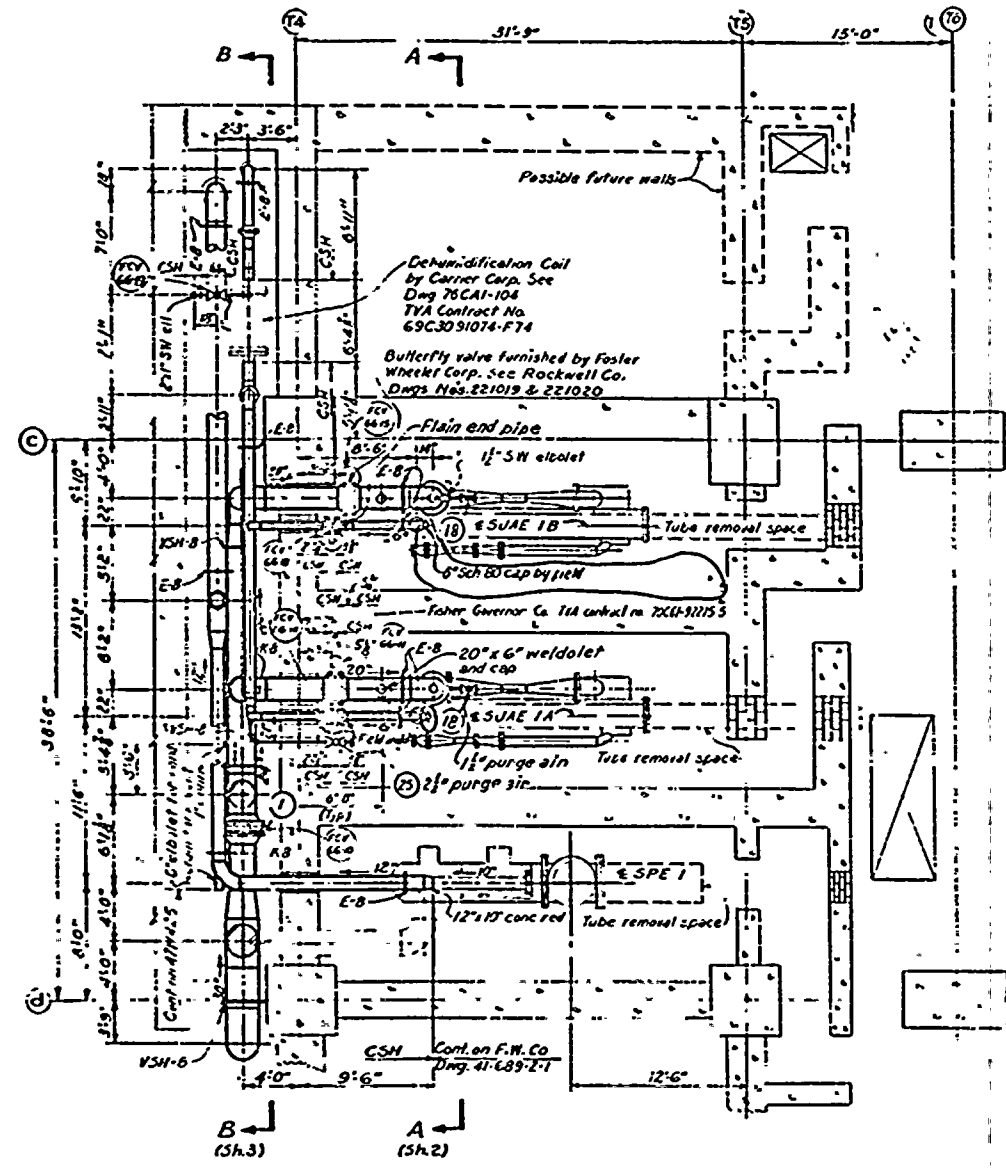
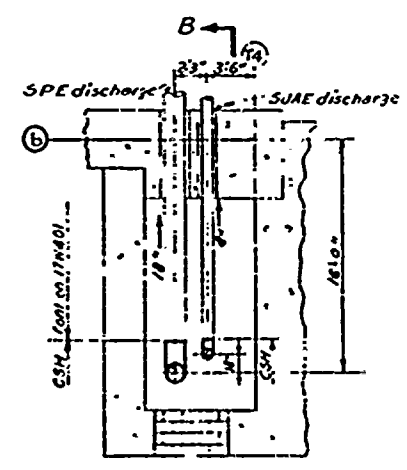


PLAN E1586.0



PLAN E1586.0



PLAN E1565.0

15. Drawings 47W405-1, 2, & 3 are for Unit 1 only prior to completion of the Off Gas Treatment Building Reactor system. After completion of Reactor System, see drawings 47W405-4 thru 47W405-8 for UNITS 1, 2, & 3 Off Gas System.

- NOTES:
1. For general specifications see TVA Specification No 9463, Contract No. 68C37-31062
 2. For details specifications see TVA List of material 47W405.
 3. CSH denotes "Contract starts here".
 4. All flanges shall be 150-lb USAS1 welder, neck unless otherwise noted.
 5. All welding joints, corrosion flanges, bolts, nuts, and gaskets required at contract starting and stopping points shall be furnished by piping contractor unless otherwise noted.
 6. H-6, etc., denotes hanger location and type. Refer to TVA hanger drawings G-M-4-33RB15-1 through -5.
 7. For valve numbers F-21-65-14 & F-21-66-18, see TVA Specification No. 9265, Contract No. 73C61-92275-5
 8. S, etc., denotes pipe size or pipe mark number as specified in TVA bill of material 47W405.
 9. For test and pressure connections see 47A and 47A.
 10. For auxiliary connections, drains, and vents connections see 47A.
 11. For sizes of pipe joints for butt welding see 47B.
 12. For sizes designated thus, etc., refer to control diagram 47W405-36-1. These numbers shall have the unit number as a prefix, i.e. 1-F-21-66-2, 2-F-21-66-2 etc.
 13. First valves for instrument shall be installed with side stem, or vertical stem.
 14. For connections see 47A.
 15. All piping is class M, with the req. that SJAЕ disch be 100% radiographed. Scale: 1/4"=1'-0"

TURBINE BLDG UNIT 1
MECHANICAL
OFF GAS SYSTEM

BROWNS FERRY NUCLEAR PLANT
TENNESSEE VALLEY AUTHORITY
DIVISION OF ENGINEERING DESIGN

SUBMITTED	BY	APPROVED
J. H. ...	J. B. ...	R. ...
KNOXVILLE	9-7-68	67 M 4 47W405-1 PG

COMPANION DRAWINGS: 47W405 Series

0270975088

