

BEFORE THE
UNITED STATES NUCLEAR REGULATORY COMMISSION

In the Matter of :
PENNSYLVANIA POWER & : Docket Nos. 50-387 and 50-388
LIGHT COMPANY :

AMMENDMENT NO. 35

APPLICATION FOR CLASS 103


OPERATING LICENSES FOR THE SUSQUEHANNA
STEAM ELECTRIC STATION

UNITS NO. 1 AND NO. 2

Applicant, Pennsylvania Power & Light Company, hereby files Amendment No. 35 to its Operating License Application date July 31, 1979.

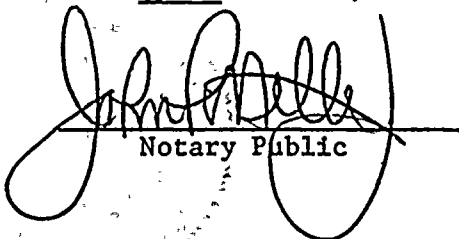
This ammendment contains Revision No. 23 to the Susquehanna SES Final Safety Analysis Report.

PENNSYLVANIA POWER & LIGHT COMPANY
BY:



N. W. Curtis
V. P., Engineering and Construction-Nuclear

Sworn to, and subscribed before me
this 5th of June, 1981.

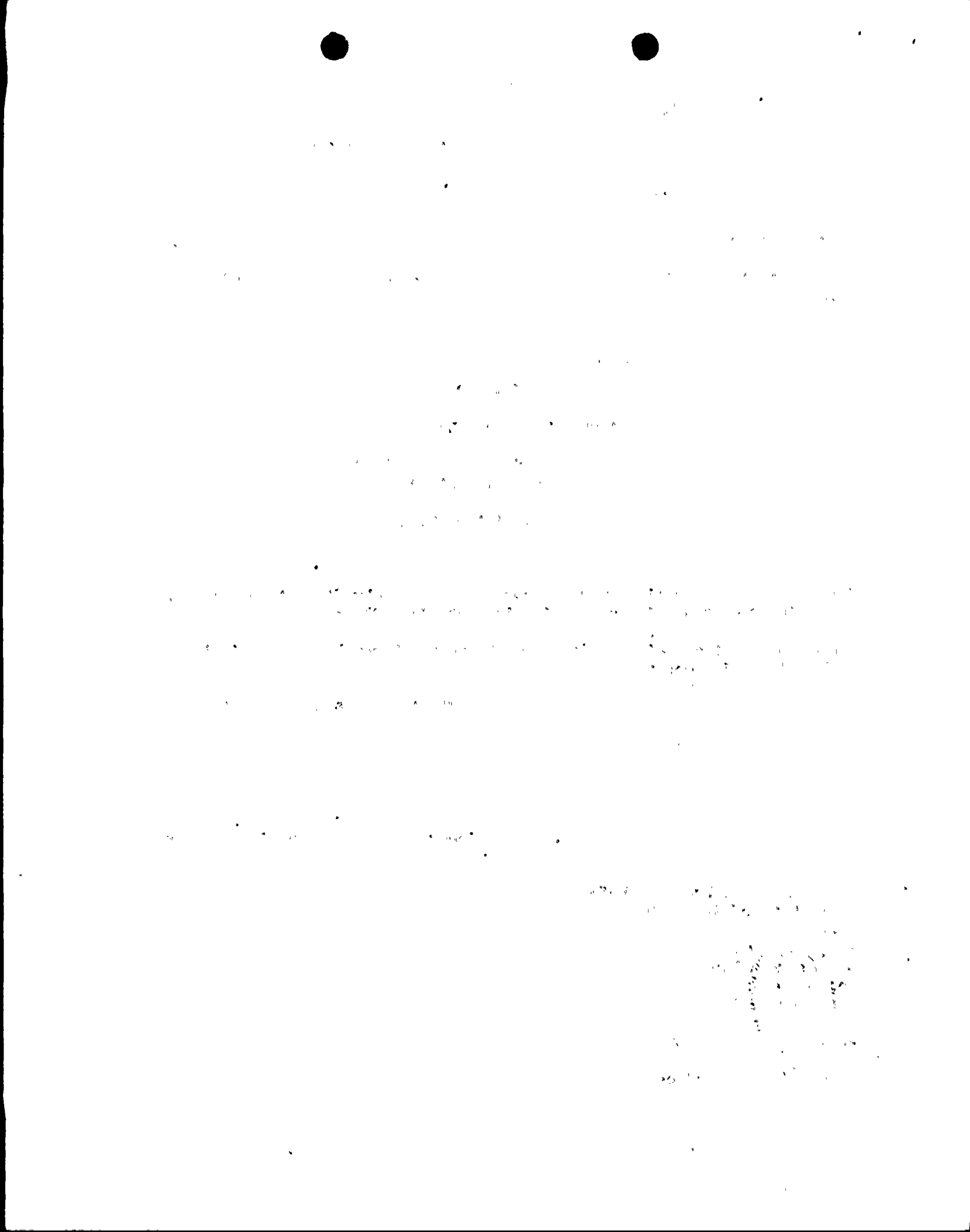


Notary Public

My Commission Expires:

JOHN P. MILLER, JR., Notary Public
Allentown, Lehigh County, Pa.
My Commission Expires May 25, 1985

8106150407



FSAR REVISIONS

The attached Revision 23 pages, tables, and figures revise the Susquehanna Steam Electric Station Final Safety Analysis Report.

<u>Remove</u>	<u>Volume 4</u>	<u>Insert</u>
3-ix		3-ix
3-x		3-x
3-xxix		3-xxix
3-xxx		3-xxx
3-xlv		3-xlv
3-xlvi		3-xlvi
3.1-51		3.1-51
3.1-52		3.1-52
3.1-63		3.1-63
3.1-64		3.1-64
3.1-65		3.1-65
3.1-66		3.1-66
Table 3.2-1 pg. 8		Table 3.2-1 pgs. 8 & 8a
3.5-11		3.5-11
3.5-12		3.5-12
3.5-13		3.5-13
3.5-14		3.5-14
3.5-15		3.5-15
3.5-16		3.5-16
-		3.5-16a
-		3.5-16b
-		3.5-16c
-		3.5-16d
-		3.5-16e
-		3.5-16f
-		3.5-16g
-		3.5-16h
-		3.5-24a
-		3.5-24b
3.5-25		3.5-25
3.5-26		3.5-26
Table 3.5-2		Table 3.5-2
-		-

Remove

Table 3.5-4

-

-

-

-

-

3.6A-1

3.6A-2

3.6A-3

3.6A-4

3.6A-5

3.6A-6

-

-

3.7B-13

3.7b-13a

3.7b-13b

3.7b-14

-

-

-

-

3.7b-15

3.7b-15a

3.7b-15b

3.7b-16

3.7b-17

3.7b-18

3.7b-19

3.7b-20

3.7b-23

-

-

-

Insert

Table 3.5-4

-

Table 3.5-8

-

Table 3.5-9

-

3.6A-1

3.6A-2

3.6A-3

3.6A-4

3.6A-5

3.6A-6

3.6A-6a

3.6A-6b

3.7B-13

3.7b-13a

3.7b-13b

3.7b-13c

3.7b-14

3.7b-14a

3.7b-14b

3.7b-14c

3.7b-15

3.7b-16

-

-

3.7b-17

3.7b-18

3.7b-19

3.7b-20

-

-

Figure 3.7b-106

-

Remove

3.12-9
3.12-10

-
-

4.6-9
4.6-10

Table 5.3-1a
pgs. 1 & 2

5.4-35
5.4-36

6.2-31
6.2-32

Table 6.2-12
pgs. 2, 3 & 6

Table 6.2-22
pgs. 3, 6, 7 & 8

6.3-20a
6.3-20b

7.lvii
7.lviii

7.lix
7.lx

7.lxi
-

-
-

-
-

-
-

7.2-11
7.2-12

7.3-17
7.3-18

Volume 7

Volume 8

Volume 9

Insert

3.12-9
3.12-9a

3.12-9b
3.12-10

4.6-9
4.6-10

Table 5.3-1A
pgs. 1, 2, & 3

5.4-35
5.4-36

6.2-31
6.2-32

Table 6.2-12
pgs. 2, 3 & 6

Table 6.2-22
pgs. 3, 6, 7 & 8

6.3-20a
6.3-20b

7.lvii
7.lviii

7.lix
7.lx

7.lxi
-

Table 7.1-10
-

Table 7.1-11
-

Table 7.1-12
-

7.2-11
7.2-12

7.3-17
7.3-18

Remove

Insert

7.3-25
7.3-26

7.3-25
7.3-26

Volume 10

7.4-21
7.4-22

7.4-21
7.4-22

8.1-13
8.1-14

8.1-13
8.1-14

Table 8.1-2
pgs. 1-11

Table 8.1-2
pgs. 1-11

8.3-1
8.3-2

8.3-1
8.3-2

8.3-3
8.3-4

8.3-3
8.3-4

Table 8.3-7
pgs. 1 & 2

Table 8.3-7
pgs. 1 & 2

Figure 8.3-15
-

Figure 8.3-15
-

9-xiii
9-xiv

9-xiii
9-xiv

9.1-1
9.1-2

9.1-1
9.1-2

9.1-3
9.1-4

9.1-3
9.1-4

9.1-5
9.1-6

9.1-5
9.1-6

9.1-7
9.1-8

9.1-7
9.1-8

9.1-9
9.1-10

9.1-9
9.1-10

9.1-10a
9.1-10b

9.1-10a
9.1-10b

9.1-10c
9.1-10d

9.1-10c
9.1-10d

9.1-10e
9.1-10f

9.1-10e
9.1-10f

Remove

9.1-10g
9.1-10h

9.1-10i
9.1-10j

9.1-10k
9.1-10l

Figure 9.1-4b

-

9.2-11
9.2-12

9.5-5
9.5-6

9.5-29
9.5-30

10.2-3
10.2-4

11.2-7
11.2-8

13i
13ii

13.1-1
13.1-2

13.1-3
13.1-4

13.1-5
13.1-6

-
-

13.1-7
13.1-8

14i
14ii

14iii
14iv

Insert

9.1-10g
9.1-10h

9.1-10i
9.1-10j

9.1-10k
9.1-10l

Figure 9.1-4b

-

9.2-11
9.2-12

9.5-5
9.5-6

9.5-29
9.5-30

10.2-3
10.2-4

11.2-7
11.2-8

13i
13ii

13.1-1
13.1-2

13.1-3
13.1-4

13.1-5
13.1-6

13.1-6a
13.1-6b

13.1-7
13.1-8

Volume 13

Volume 14

14i
14ii

14iii
14iv

Remove

Insert

14.2-11 thru
14.2-50

14.2-11 thru
14.2-50

14.2-55 thru
14.2-120

14.2-55 thru
14.2-120

Table 14.2-2
pgs. 1-3

Table 14.2-2
pgs. 1-3

Table 14.2-4
-

Table 14.2-4
-

Table 14.2-5
-

Table 14.2-5
-

Figure 14,2-5
Sheets 1, 2 & 3

Figure 14.2-5
Sheets 1 & 2

15.3-11
15.3-12

15.3-11
15.3-12

Volume 16

21.79-1
-

21.79-1
-

32.27-1
-

32.27-1
-

32.44-1
-

32.44-1
-

32.69-1
-

32.69-1
-

32.72-1
-

32.72-1
-

32.74-3

32.74-3

32.74-4

32.74-4

32.81-1

32.81-1

32.81-2

32.81-2

32.99-1
-

32.99-1
-

40.6-3

40.6-3

40.6-4

40.6-4

40.6-5

40.6-5

40.6-6

40.6-6

40.6-7
-

40.6-7
-

Remove

Table 40.6-1

-

-

-

-

-

-

-

-

-

-

-

-

-

130.20-1

-

-

-

-

-

-

-

-

-

-

-

-

-

-

-

-

-

-

-

-

-

Insert

Table 40.6-1

-

121.14-1

-

121.15-1

-

121.16-1

-

121.18-1

-

121.19-1

-

121.20-1

-

130.20-1

130.20-2

Table 130.20-1

130.20-2

Table 130.20-3

130.20-4

130.21-1

130.21-1

Table 130.21-1

-

Table 130.21-2

-

Table 130.21-3

-

Figure 130.21-1

-

Figure 130.21-2

-

130.24-1

-

Table 130.24-1

pgs. 1 & 2

Remove

Insert

-	130.25-1
-	-
-	130.26-1
-	-
-	130.27-1
-	-
-	Table 130.27-1
-	-
-	Figure 130.27-1
-	-
-	Figure 130.27-2
-	-
-	Figure 130.27-3
-	-
-	Figure 130.27-4
-	-
-	130.28-1
-	130.28-2
-	130.28-3
-	130.28-4
-	Table 130.28-1
-	-
-	Table 130.28-2
-	-

Volume 17

211.70-3	211.70-3
211.70-4	211.70-4
211.122-1	211.122-1
-	-
211.135-1	211.135-1
-	-
-	331.16-1
-	-
-	Table 331.16
-	pgs. 1 & 2

Remove

Insert

-	410.09-1
-	-
-	410.10-1
-	-
-	410.11-1
-	-
-	410.12-1
-	-
-	410.13-1
-	-
423.12-5	423.12-5
423.12-6	423.12-6
423.12-7	423.12-7
423.12-8	423.12-8
423.12-9	423.12-9
423.12-10	423.12-10
423.12-11	423.12-11
423.12-12	423.12-12
423.12-13	423.12-13
423.12-14	423.12-14
423.12-15	423.12-15
-	-
-	423.23-1
-	-
-	423.48-1
-	-
-	423.49-1
-	-
-	423.50-1
-	-
-	423.51-1
-	-
-	423.52-1
-	-
-	423.53-1
-	-

-
-
-
-
-
-
-
-
-
-

423.54-1

-

423.55-1

-

423.56-1

-

423.57-1

423.57-2

423.58-1

-

