

REGULATORY INFORMATION DISTRIBUTION SYSTEM (RIDS)

ACCESSION NBR: 8102200200 DOC. DATE: 81/02/09 NOTARIZED: NO DOCKET #  
 FACIL: 50-387 Susquehanna Steam Electric Station, Unit 1, Pennsylv 05000387  
 50-388 Susquehanna Steam Electric Station, Unit 2, Pennsylv 05000388  
 AUTH. NAME AUTHOR AFFILIATION  
 CURTIS, N.W. Pennsylvania Power & Light Co.  
 RECIP. NAME RECIPIENT AFFILIATION  
 YOUNGBLOOD, B.J. Licensing Branch 1

~~See Report~~

SUBJECT: Forwards proprietary Revision 4 to design assessment rept  
 "Sections 9.4, 9.5 & 9.6 GKM-IIM Steam Blowdown Test."  
 Revision documents LOCA load definition presented to NRC  
 on 801211. Revision withheld (ref 10CFR2.790).

*Rev 4-21-81 w*

DISTRIBUTION CODE: PB015 COPIES RECEIVED: LTR 3 ENCL 40 SIZE: 1+152  
 TITLE: Proprietary Info Re PSAR/FSAR

NOTES: Send I&E 3 copies FSAR & all amends.  
 Send I&E 3 copies FSAR & all amends.

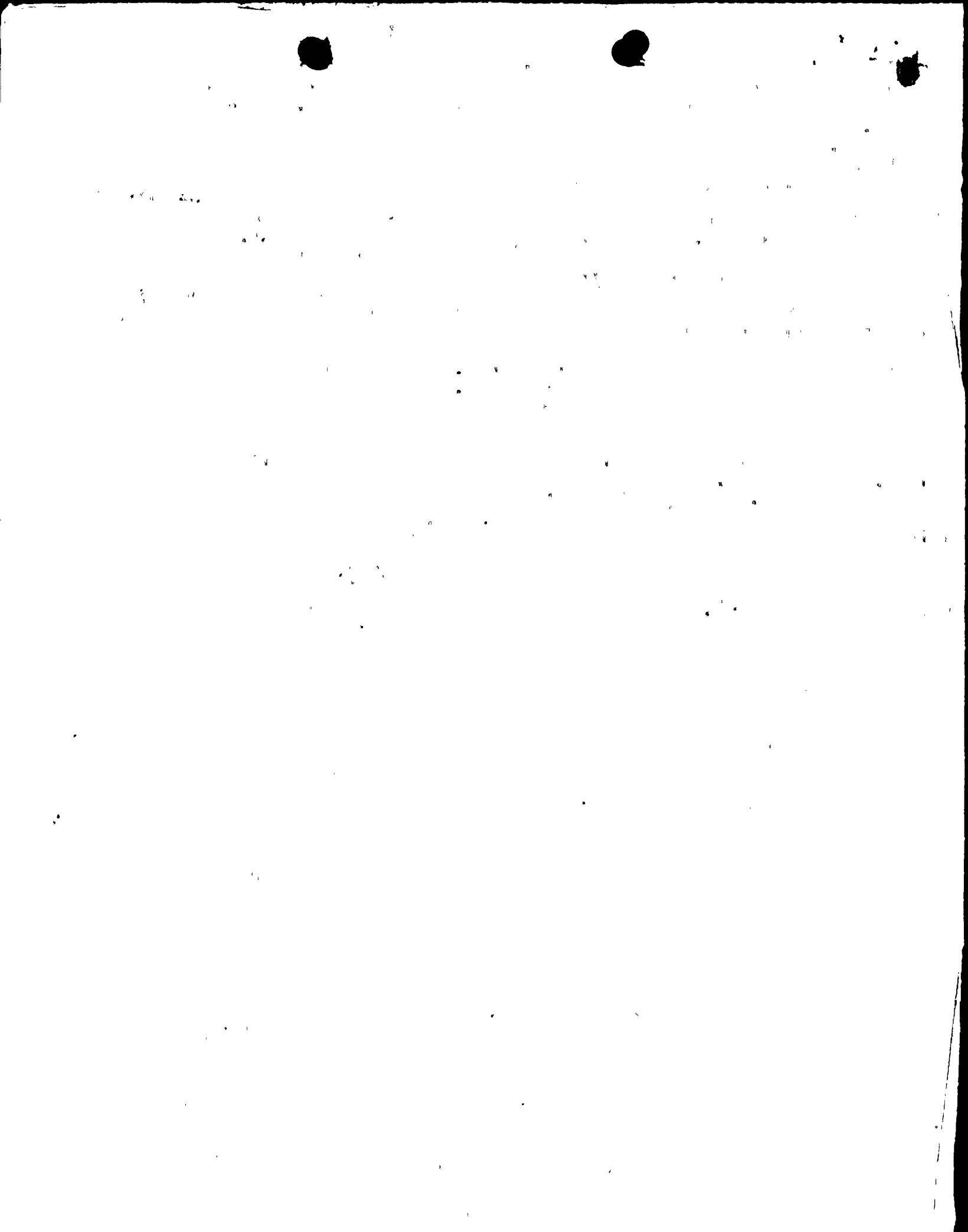
05000387  
 05000388

ACTION:	RECIPIENT ID CODE/NAME	COPIES		RECIPIENT ID CODE/NAME	COPIES	
		LTR	ENCL		LTR	ENCL
	YOUNGBLOOD, B	1	0	RUSHBROOK, M.	1	0
	STARK, R. <i>02 #4</i>	1	1			
INTERNAL:	DIRECTOR NRR	1	0	I&E <i>#2, 3</i> 21	2	2
	MPA	1	0	NRC PDR	1	0
	OELD	1	0	<u>REG FILE #101</u>	1	1
EXTERNAL:	ACRS <i>#5-204</i>	16	16	LPDR	1	0
	NSIC	1	0			

*MAZ*

TOTAL NUMBER OF COPIES REQUIRED: LTR 28 ENCL 20

*JF*





TWO NORTH NINTH STREET, ALLENTOWN, PA. 18101 PHONE: (215) 821-5151

February 9, 1981

Mr. B. J. Youngblood, Chief  
Light Water Reactors Branch No. 1  
Division of Project Management  
U.S. Nuclear Regulatory Commission  
Washington, DC 20555

US NRC  
DISTRIBUTION SERVICES  
BRANCH

1981 FEB 19 AM 11 15

U.S. NUCLEAR REGULATORY COMMISSION

SUSQUEHANNA STEAM ELECTRIC STATION  
DESIGN ASSESSMENT REPORT - REVISION 4  
ER-100450 FILE 172-1, 840-2  
PLA - 629

Docket Nos. 50-387  
50-388

Dear Mr. Youngblood:

Transmitted herewith are (40) forty copies of Revision 4 to the Susquehanna SES Design Assessment Report. Section 9.5 of Book 2 has been revised to include the analysis of the GKM II-M data and the SSES LOCA load definition resulting from the GKM II-M test program. In addition, a small number of editorial changes have been made.

Pursuant to 10 CFR 2.790 and the affidavit submitted with our August 13, 1980 letter (PLA-527), we request that those pages marked proprietary be withheld from public disclosure.

The Mark II Owners Group recently notified the NRC Generic Issues Branch of a delay in completion of the generic Mark II chugging load definition. We understand this will result in an extension of NRC Task Action Plan A-8, "Mark II Containment Pool Dynamic Loads", through August 1981. We wish to notify you that PP&L expects no impact from this delay in the generic Mark II program on our closure of the Susquehanna LOCA load definition. The enclosed revision to the SSES Design Assessment Report documents our LOCA load definition presented to the staff on December 11, 1980. A comparison of this load with available JAERI multi-vent test data and a comparison of acceleration response spectra developed from this load with our design basis response spectra are scheduled to be submitted to you in March, 1981. That submittal will complete our LOCA loads program.

Very truly yours,

N. W. Curtis  
Vice President-Engineering & Construction

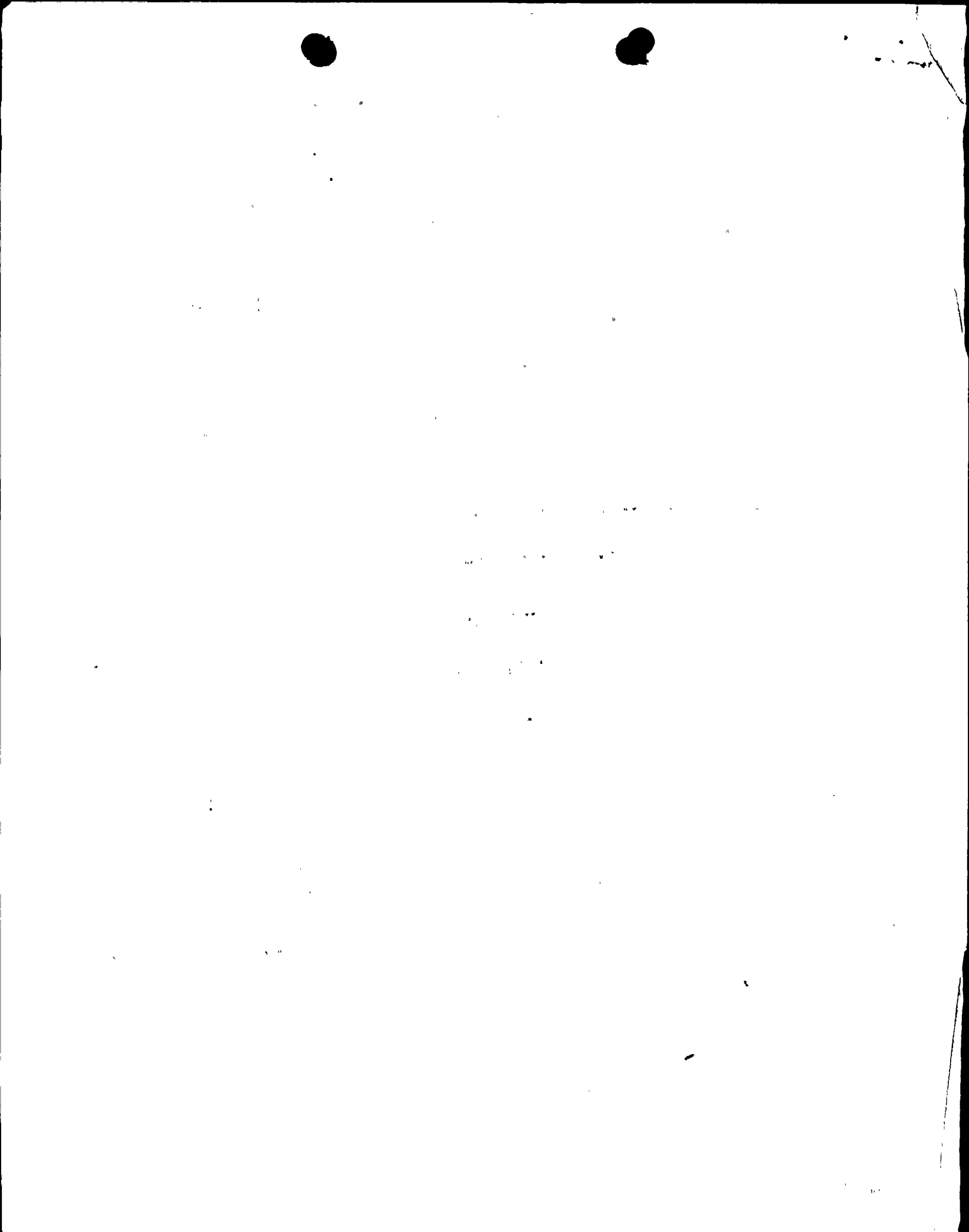
PB01  
5  
3/40

PAF:cvc  
Enclosures

070868

A

8102200200



DOCKET NO. 50-387/388

DATE: 2.23.81

NOTE TO NRC AND/OR LOCAL PUBLIC DOCUMENT ROOMS

The following item submitted with letter dated 2.09.81  
from Pennsylvania Power & Light Co is being withheld from public disclosure  
in accordance with Section 2.790.

PROPRIETARY INFORMATION

FORWARDS prop. revision 4 to design  
assessment rept

Sharon Hunt  
M/S-016

Distribution Services Branch

33

FEB 23 1981



UNITED STATES  
NUCLEAR REGULATORY COMMISSION  
WASHINGTON, D. C. 20555

MEMORANDUM FOR: TERA CORPORATION  
FROM: US NRC/TIDC/DOCUMENT MANAGEMENT BRANCH  
SUBJECT: Special Document Handling Requirements

1. Please use the following special distribution list for the attached document.

2. The attached document requires the following special considerations:

- Do not send oversize enclosures to the NRC PDR.
- Only one oversize enclosure was received - please return for Regulatory File storage.
- Proprietary information - send only <sup>LR</sup> non-proprietary portions to the NRC PDR.
- Other: (specify)

2-9-81

cc: DMB Files

TIDC/DMB (Authorized Signature)



10

11

12

13