

PRIORITY 1

(ACCELERATED RIDS PROCESSING)

REGULATORY INFORMATION DISTRIBUTION SYSTEM (RIDS)

ACCESSION NBR: 9505300226 DOC. DATE: 95/05/22 NOTARIZED: YES DOCKET #
FACIL: 50-388 Susquehanna Steam Electric Station, Unit 2, Pennsylvania 05000388
AUTH. NAME AUTHOR AFFILIATION
BYRAM, R.G. Pennsylvania Power & Light Co.
RECIP. NAME RECIPIENT AFFILIATION
 Document Control Branch (Document Control Desk)

SUBJECT: Provides core shroud insp scope & schedule for SSES Unit 2
in response to requirements of GL 94-03 & as committed to in
util 941219 ltr.

DISTRIBUTION CODE: A018D COPIES RECEIVED: LTR 1 ENCL 1 SIZE: 5
TITLE: GL 94-03 Intergranular Stress Corrosion Cracking of Core Shrouds in B

NOTES:

	RECIPIENT ID CODE/NAME	COPIES LTR ENCL	RECIPIENT ID CODE/NAME	COPIES LTR ENCL
	PM...	1 1	PM/CARPENTER, G.	1 1
INTERNAL:	FILE CENTER 01	1 1	NRR/DE/EMCB	1 1
	NRR/DE/EMEB	1 1	NRR/DOPS/OECB	1 1
	NRR/DSSA/SRXB	1 1		
EXTERNAL:	NRC PDR	1 1		

NOTE TO ALL "RIDS" RECIPIENTS:

PLEASE HELP US TO REDUCE WASTE! CONTACT THE DOCUMENT CONTROL
DESK, ROOM P1-37 (EXT. 504-2083) TO ELIMINATE YOUR NAME FROM
DISTRIBUTION LISTS FOR DOCUMENTS YOU DON'T NEED!

TOTAL NUMBER OF COPIES REQUIRED: LTR 8 ENCL 8

P
R
I
O
R
I
T
Y

1

D
O
C
U
M
E
N
T



Pennsylvania Power & Light Company

Two North Ninth Street • Allentown, PA 18101-1179 • 610/774-5151

Robert G. Byram
Senior Vice President—Nuclear
610/774-7502
Fax: 610/774-5019

MAY 22 1995

U.S. Nuclear Regulatory Commission
Attn.: Document Control Desk
Mail Station P1-136
Washington, DC 20555

**SUSQUEHANNA STEAM ELECTRIC STATION
UNIT 2 7TH REFUEL AND INSPECTION OUTAGE
CORE SHROUD INSPECTION
SCOPE AND SCHEDULE
PLA-4317**

FILE R41-2

Docket No. 50-388

- Reference: 1) PLA-4233 from Mr. R.G. Byram to USNRC, "Interim Response to Generic Letter 94-03, "dated December 19, 1995.
- 2) USNRC Letter from Mr. C. Poslusny to Mr. R.G. Byram, Generic Letter 94-03, Generic Letter 94-03, "Intergranular Stress Corrosion Cracking of Core Shrouds in BWRs," Pennsylvania Power and Light Company, Susquehanna Steam Electric Station, Units 1 and 2 (TAC Nos. M90112 and M90113) dated March 23, 1995.

This letter provides PP&L's core shroud inspection scope and schedule for Susquehanna Steam Electric Station (SSES) Unit 2 in response to the requirements of Generic Letter 94-03 and as committed to in the referenced PLA-4233.

PP&L commits to perform the scope of inspections as defined in the BWR Core Shroud Inspection and Flaw Evaluation Guidelines prepared by General Electric Nuclear Energy for the BWROG Vessel Internals Inspection Project, GENE-523-113-0894 for Category B plants. For SSES Unit 2, this inspection will consist of ultrasonic inspection of all accessible areas of welds H3, H4, H5, H6B, and H7. The inspections will be conducted during the Unit 2-7th Refueling and Inspection Outage scheduled to begin in September, 1995.

In the case where no significant cracking (defined as greater than 10% of the weld length) is found in any of the above five welds, PP&L will scan the remaining three welds (H1, H2, and H6A) as permitted by the outage schedule. In the case where significant cracking is found, the

9505300226 950522
PDR ADDCK 05000338
P PDR

AD18

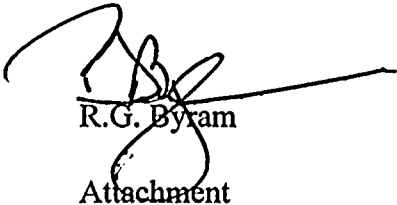
scope of inspection will be increased to include all accessible areas of welds H1, H2, and H6A as shown in the Attachment to this PLA.

We plan to use the BWR Core Shroud Distributed Ligament Length Computer Program, as we did for Unit 1, to assess structural integrity if any cracking is discovered. This program will be used to help determine if any repairs are necessary to ensure the structural integrity of the Unit 2 shroud. If repairs are necessary, they will be performed in accordance with the BWR Core Shroud Repair Design Criteria and Flaw Evaluation Guidelines prepared by General Electric Nuclear Energy for the BWROG Vessel Internals Project.

We will submit results from the Unit 2 core shroud inspection to the NRC within 30 days following the completion of all inspections accomplished during the Unit 2 outage.

Please call our Mr. James B. Wesner if you have any questions.

Very truly yours,



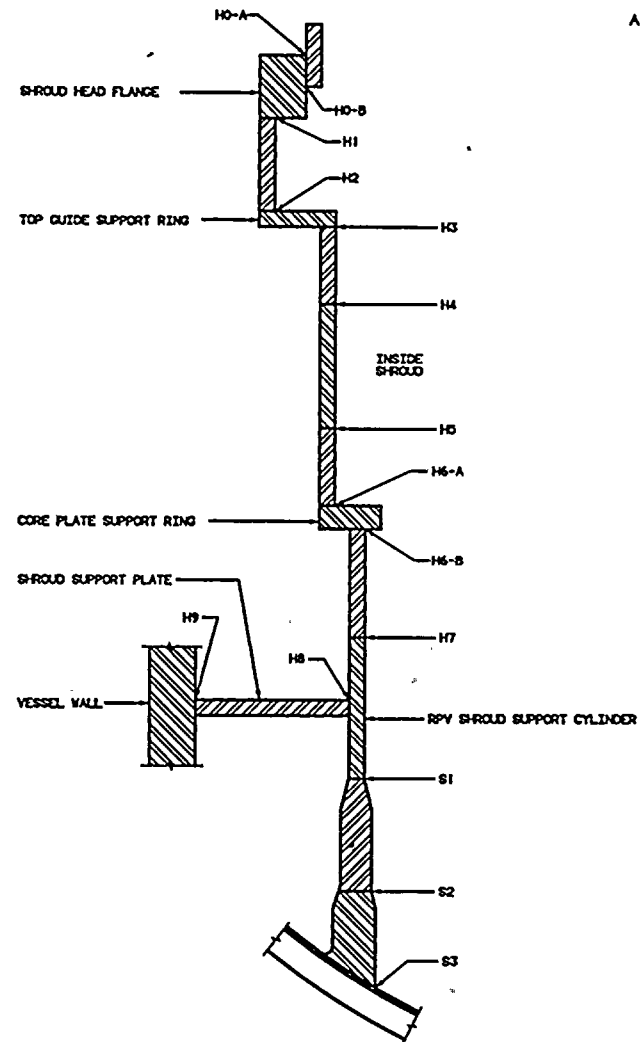
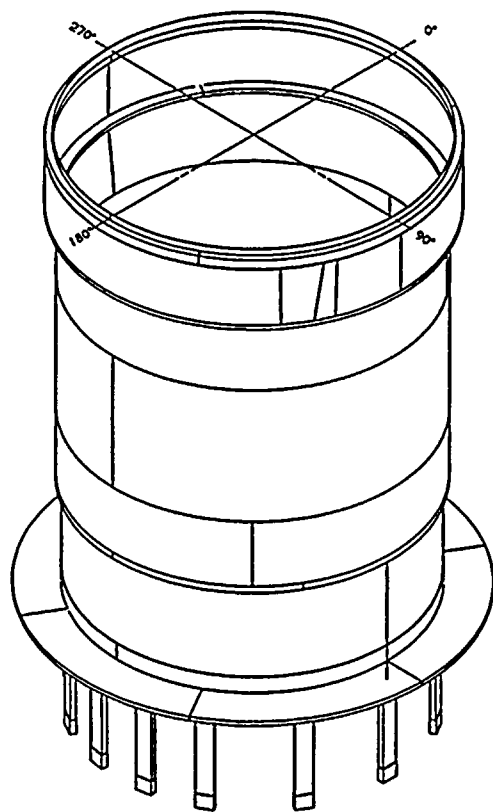
R.G. Byram
Attachment

copy: NRC Region I
Ms. M. Banerjee NRC Sr. Resident Inspector
Mr. C. Poslusny, Jr. NRC Sr. Project Manager



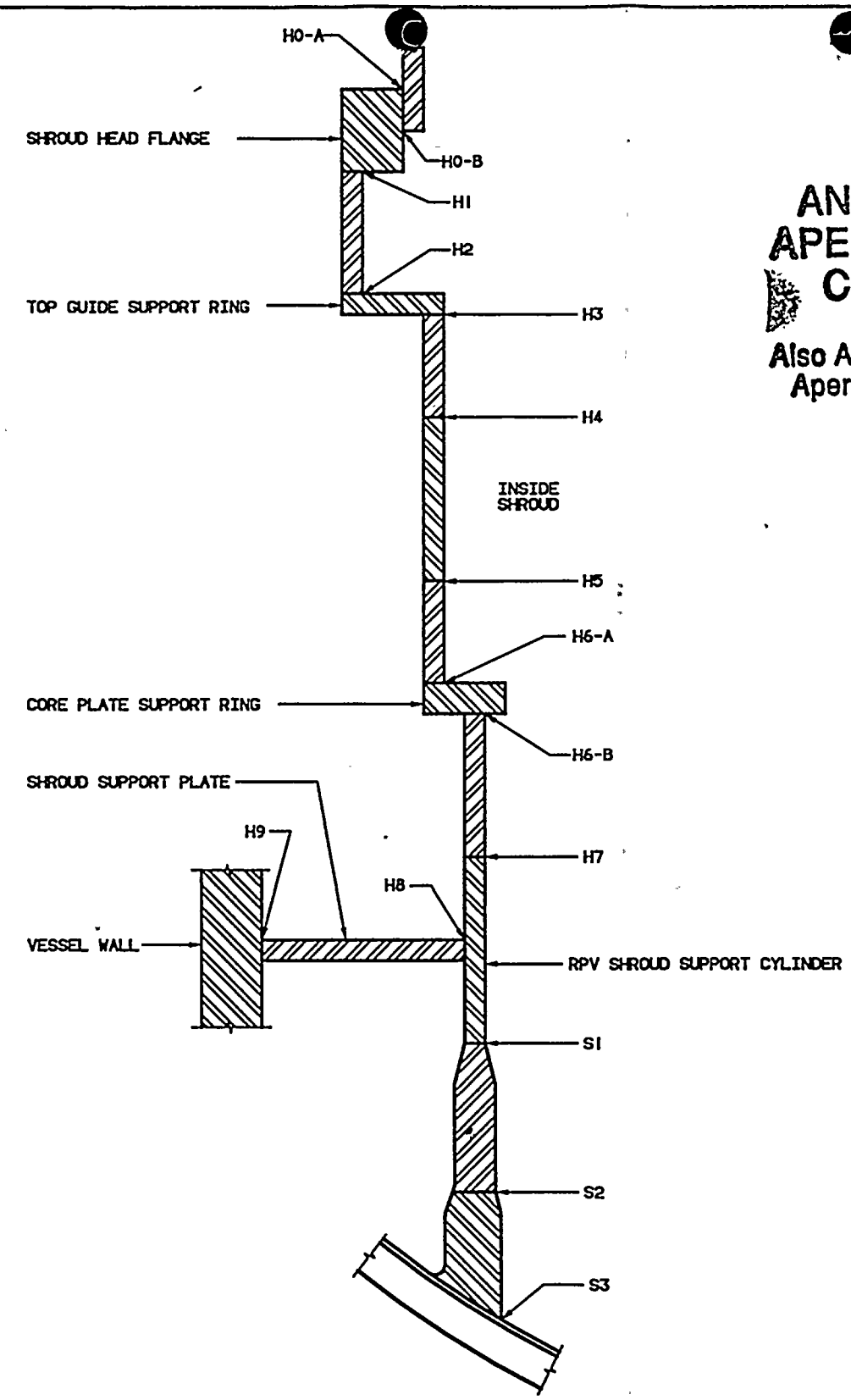
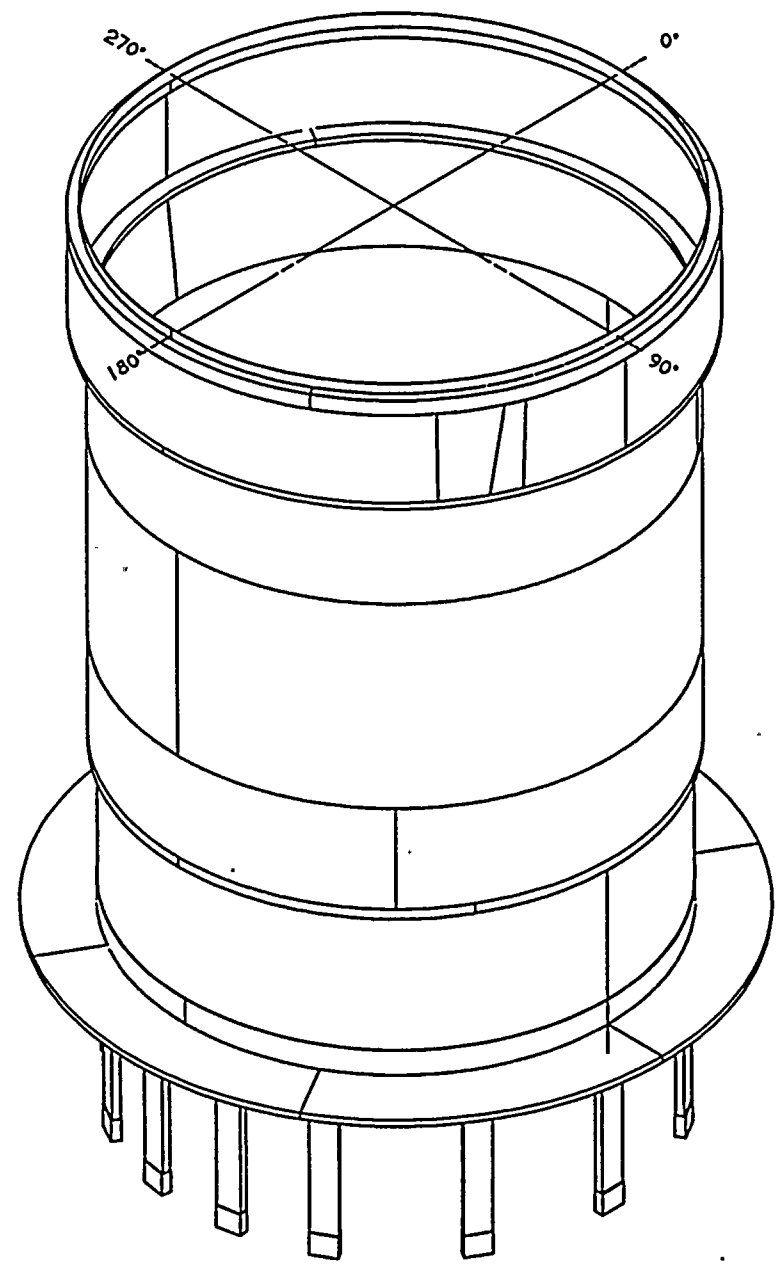
1





TYPICAL SHROUD WALL CROSS SECTION

SUSQUEHANNA SHROUD



ANSTEC APERTURE CARD

Also Available on Aperture Card

TYPICAL SHROUD WALL CROSS SECTION

SUSQUEHANNA SHROUD

9505300226-01

