

Question 7 - Appendix II

Provide a copy of the license or other documentation from the Pennsylvania Game Commission which will specify all mitigative actions required by the Game Commission to be taken by the applicant on Game Commission lands crossed by the Siegfried and Sunbury proposed lines.

Response 7

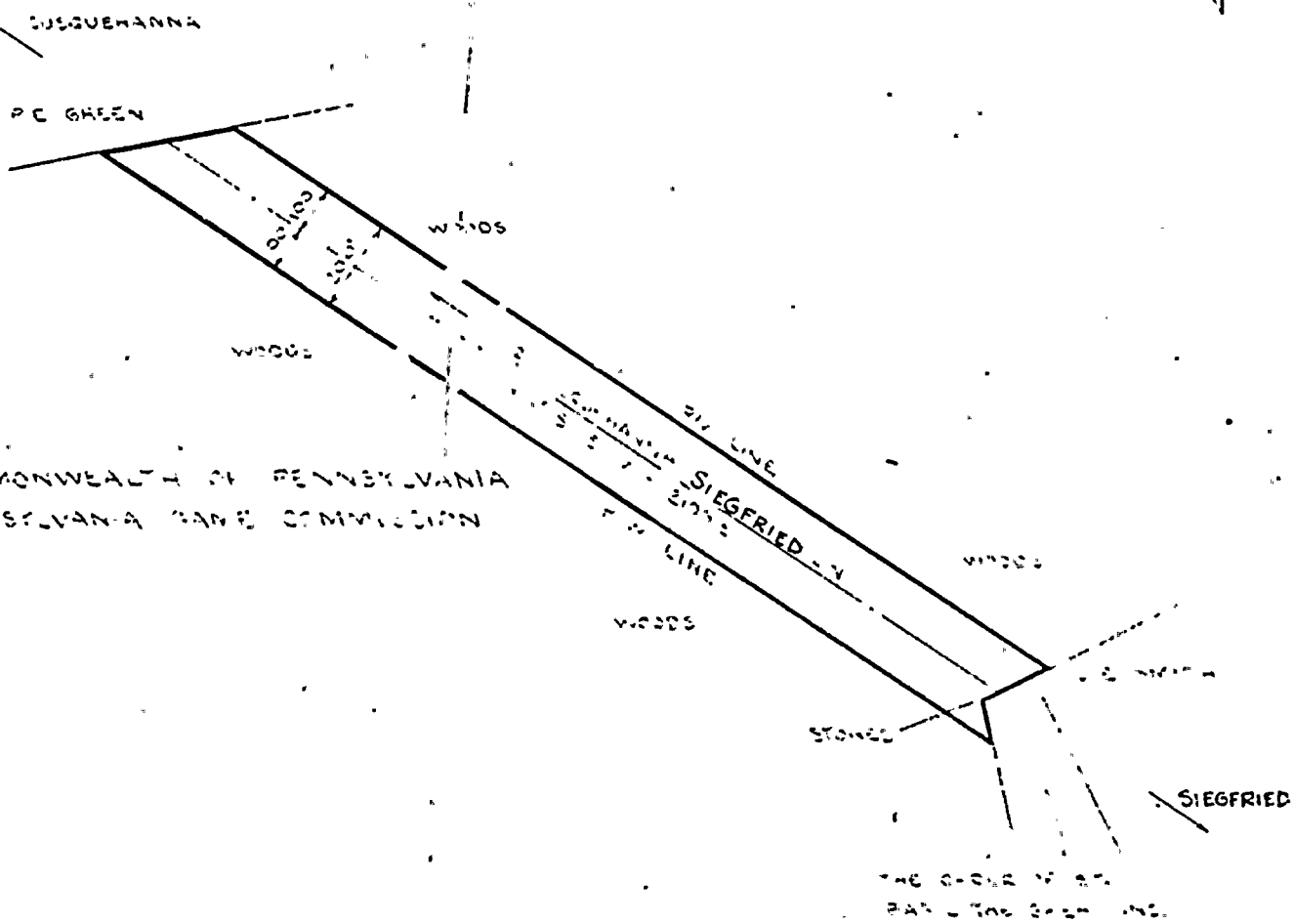
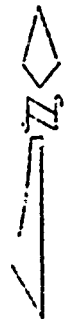
Attached are right-of-way licenses for both the Sunbury-Susquehanna and Susquehanna-Siegfried 500 kv lines from the Pennsylvania Game Commission. These licenses specify mitigative actions required for crossing Game Commission lands.

Environ

Docket # *70-387*
Control # *10542*
Date *10-15-76* of Documents
REGULATORY DOCKET FILE ✓

APPROVED

BY CH.



COMMONWEALTH OF PENNSYLVANIA
 PENNSYLVANIA GAME COMMISSION

REVISION

139

NO. DATE ER

MICHAEL BAKER, JR., INC
 Consulting Engineers Beaver, Penna.

Approved:
[Signature]

ER-121070
 ER -
 ER -
 SCALE - 1"=400'
 DATE -
 DRAWN -
 CHECKED -
 LEADER -
 APPROVED -
 APPROVED -

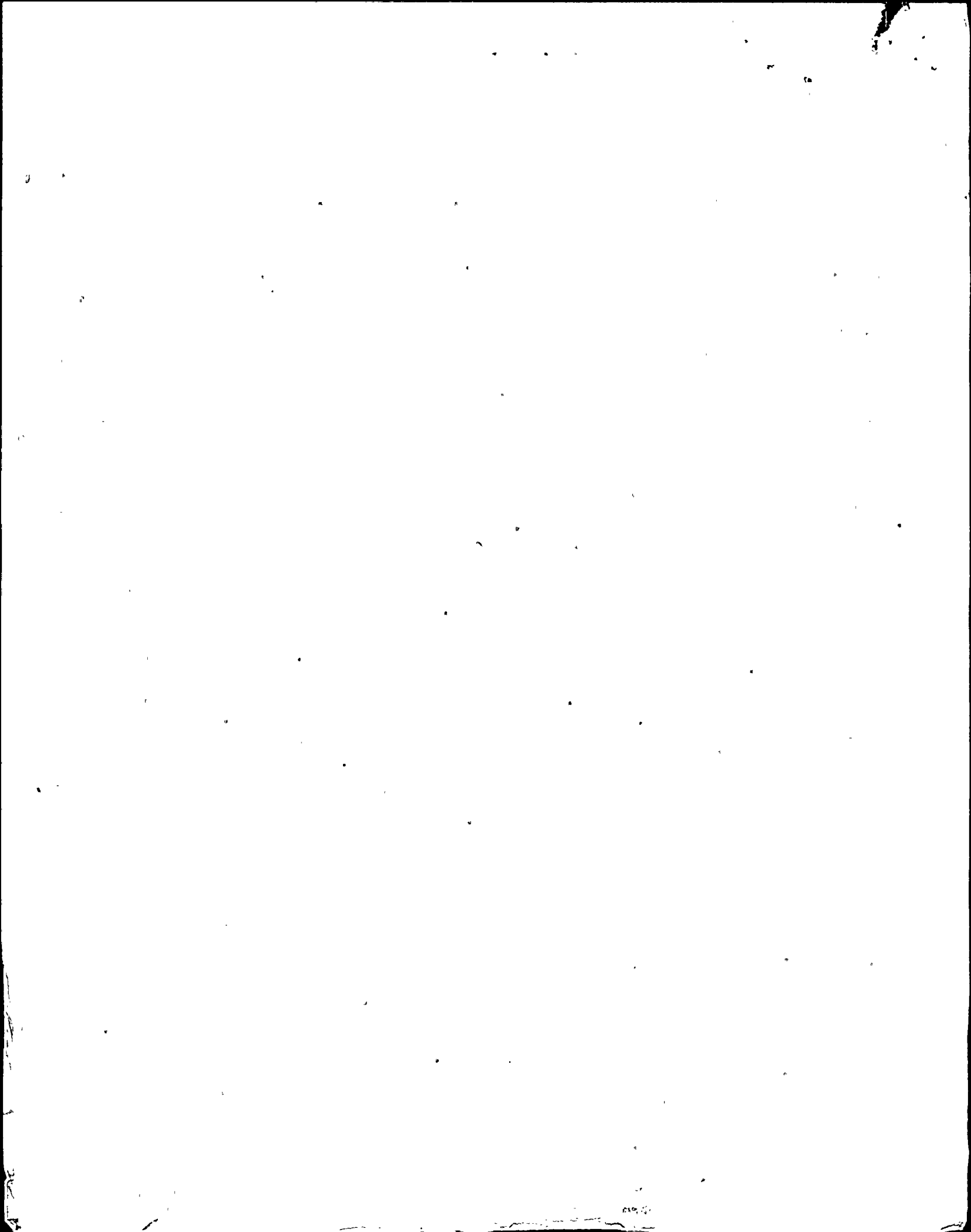
SUSQUEHANNA-SIEGFRIED LINE
 PLAN SHOWING ELECTRIC LINE RIGHT OF WAY OVER
 PROPERTY OF
 COMMONWEALTH OF PENNSYLVANIA
 PENNSYLVANIA GAME COMMISSION
 PENN FOREST TWP, CARBON CO., PA.

PENNSYLVANIA POWER & LIGHT COMPANY
 ALLENTOWN, PENNA.

APPROVED
[Signature]
 MGR. TRANSMISSION ENGINEERING

LA-113177-0







P/W LINE
LINE
LINE

PENNSYLVANIA
COMMISSION

WOODS

WOODS

100' 100'

200'

B. A. SCHWARTZ

SIEGFRIED

ER-121070
ER-
ER-
SCALE-1"=400'
DATE-5-12-74

SUSQUEHANNA-SIEGFRIED LINE
 PLAN SHOWING ELECTRIC LINE RIGHT OF WAY OVER
 PROPERTY OF
 COMMONWEALTH OF PENNSYLVANIA
 PENNSYLVANIA GAME COMMISSION
 PENN FOREST TWP. CARBON CO., PA.

132

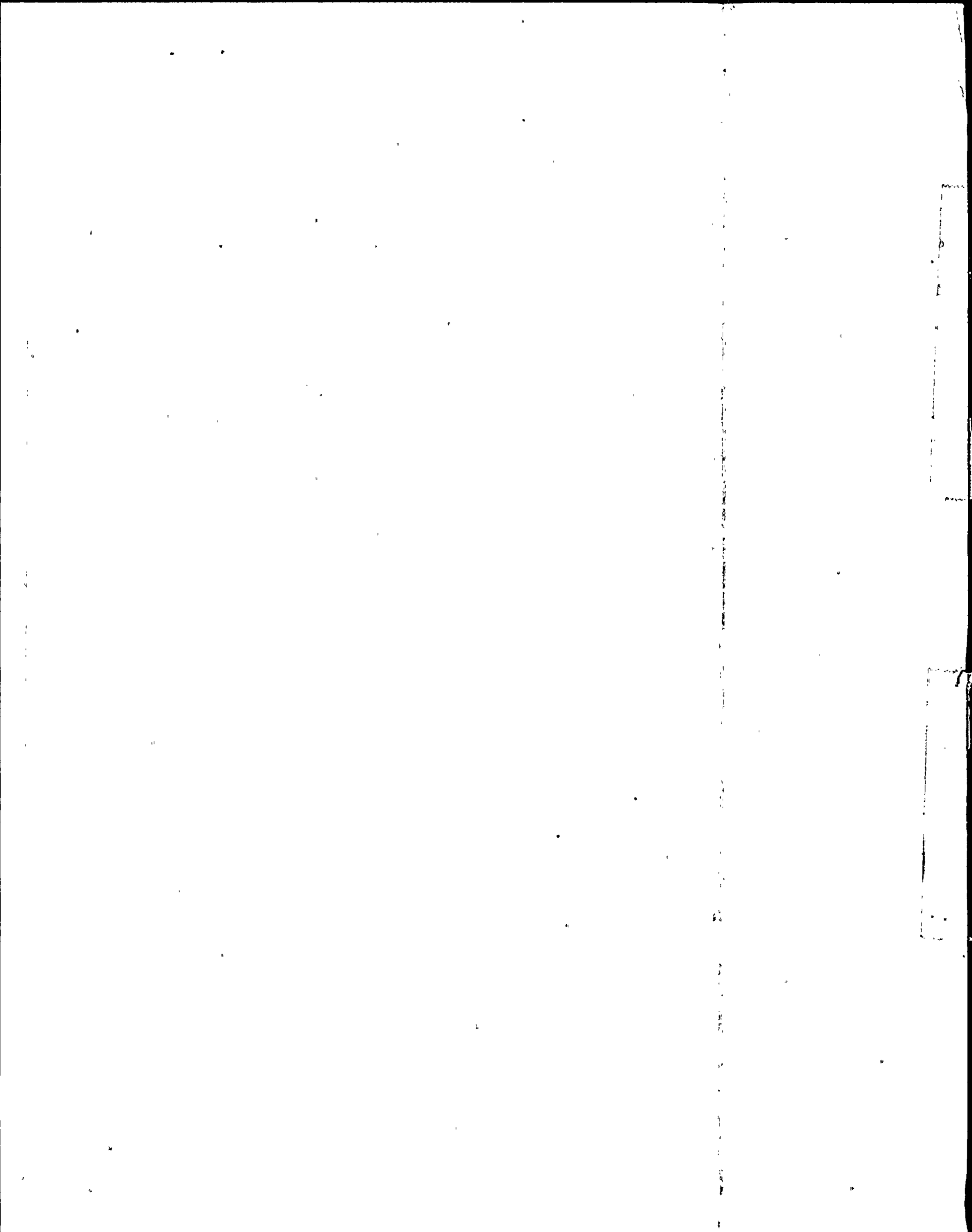
BY	CK	APPROVED		

DRAYN-
 CHECKED-
 LEADER-
 APPROVED-
 APPROVED-
 APPROVED-

PENNSYLVANIA POWER & LIGHT COMPANY
 ALLENTOWN, PENNA.

APPROVED
H. Sander
 MGR., TRANSMISSION ENGINEERING

LB-114780-0



SUSQUEHANNA

CORPORATION

JERAS

WOODS

ROCK OUTCROP

E SUSQUEHANNA-SIEGFRIED LINE
N 56° 51' 02" W — 34.20' ±
R/W LINE

COMMONWEALTH OF PENNSYLVANIA
PENNSYLVANIA GAME COMMISSION

MICHAEL BAKER, JR., INC.

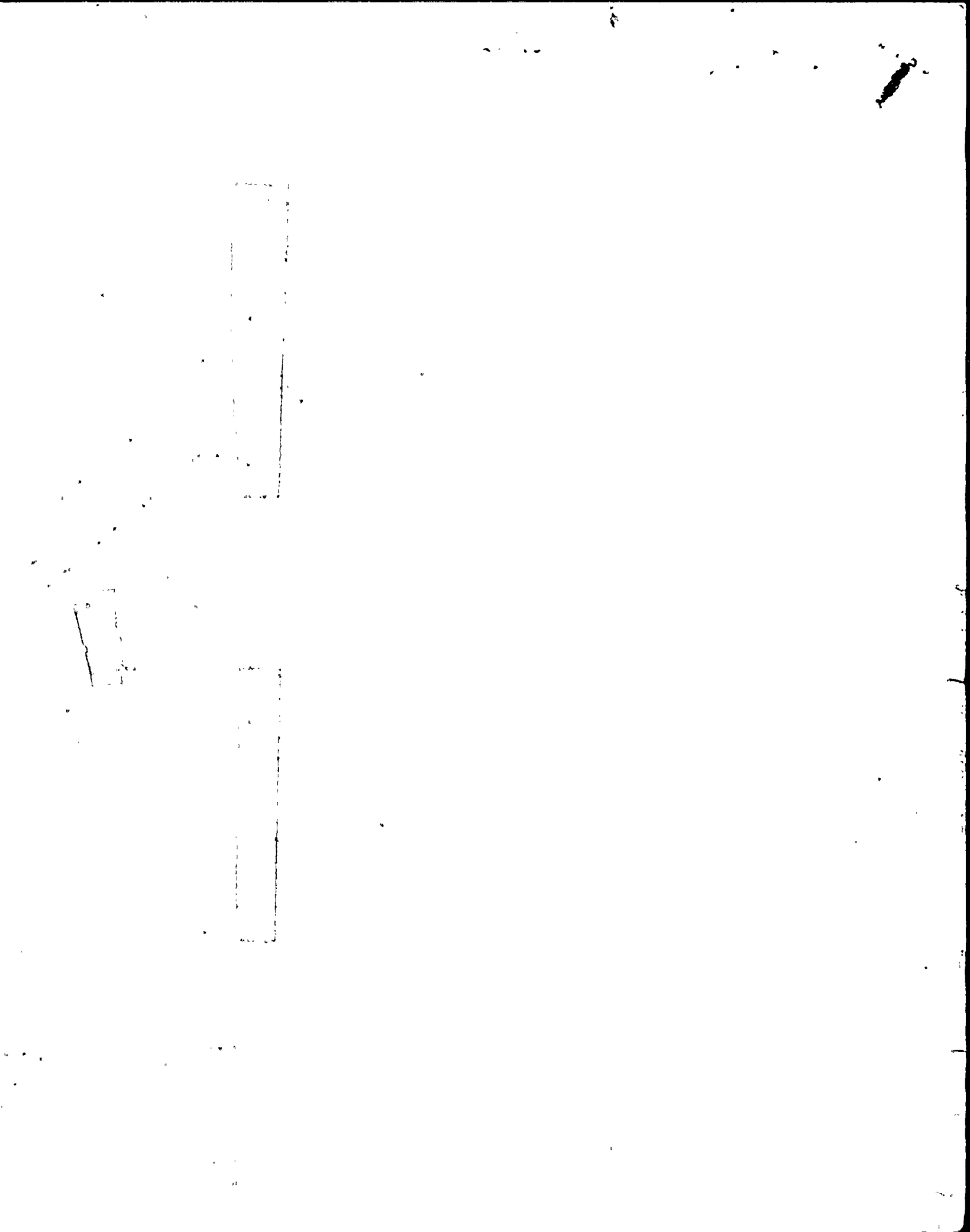
Consulting Engineers Beaver, Pennsylvania

Approved: *Donald W. Johnson* (NYS)

132

NO.	DATE	ER	REVISION	BY	CH.	APPROVED





Question 8 - Geological Maps

Provide geological maps indicating proposed transmission line including alternatives.

Response 8

U.S.-G.S. Maps have been previously provided to Mr. Singh Bajwa of the NRC.

Question 9 - Table 3.9-P & Section 5.5.1.5

"PP&L will adjust the structure heights to limit the electrostatic field at ground level to 7.5 kilovolts per meter." Explain whether this requirement will apply on selective areas or throughout the transmission routes. Explain why the magnitude of the field ranges from 7.8 to 11 kilovolts per meter when Table 3.9-P shows that maximum calculated electrostatic gradients is only 7.83 (5.5.1.5).

Response 9

The 7.5 kilovolts per meter electrostatic field strength is discussed in Paragraph 3.9.5.5 as the acceptable level at highway crossings where large vehicles may park.

Paragraph 5.5.1.5 confirms that PP&L Co. will install a phasing arrangement and increase structure height, if necessary, at highway crossings, to limit the electrostatic field strength at ground level to 7.5 kilovolts per meter. However, because PP&L normally provides sufficient ground clearance at highway crossings to clear existing or future distribution or communication line undercrossings, the maximum field strength listed in Table 3.9-P will never be reached.

Table 3.9-P shows the calculated maximum field strengths for the various corridors under the phasing arrangements which will be instituted on the Susquehanna 500 KV lines. The 11 kilovolts per meter field strength could result under the worst possible phasing arrangement of the single circuit and double circuit 500 KV corridor. The phasing arrangement which will be used in this corridor will result in no greater than 7.83 KV/meter at 37' ground clearance. However the clearance at the highway crossings will be more than 54' to clear Distribution and Communications undercrossings.

