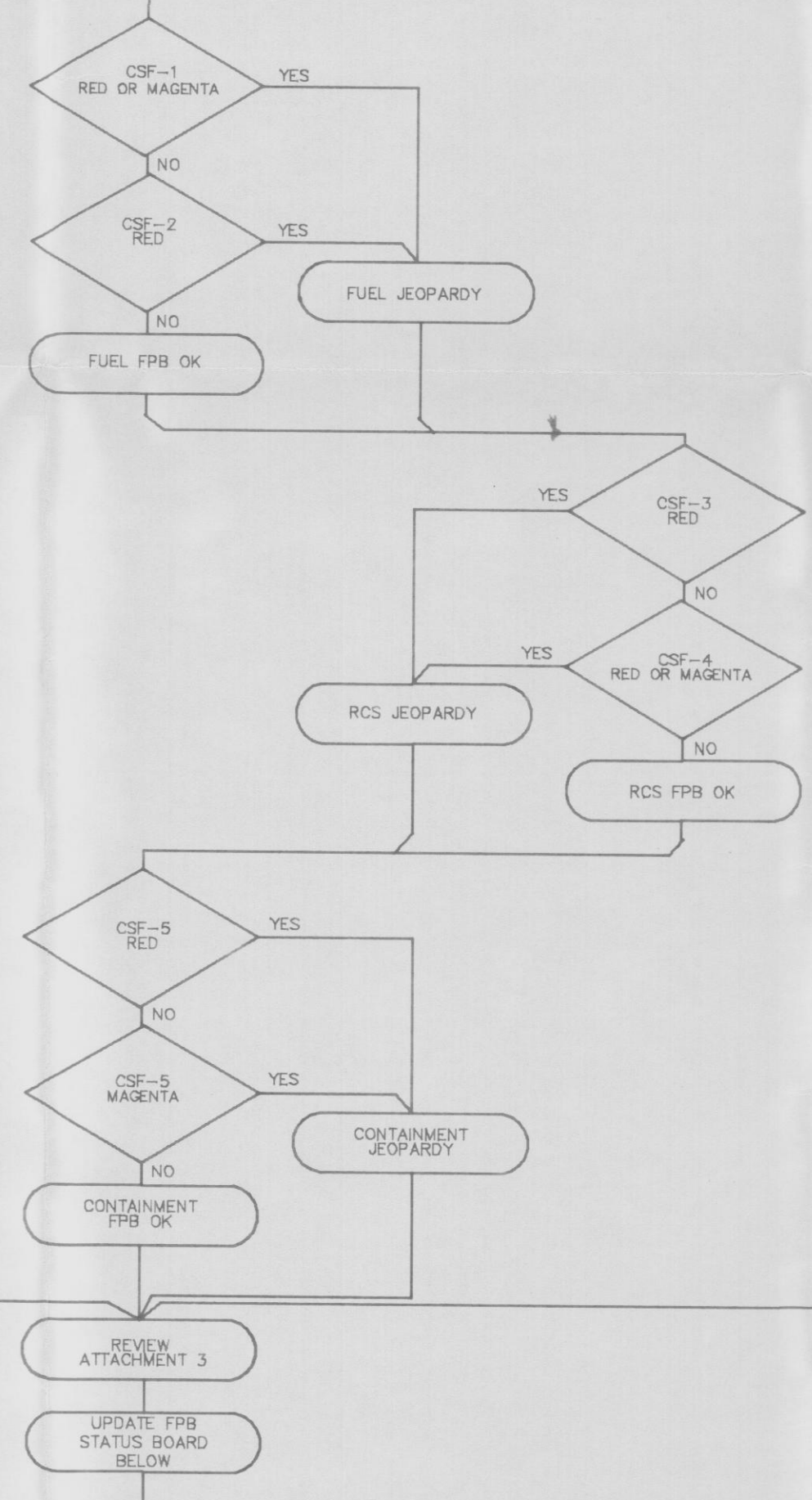
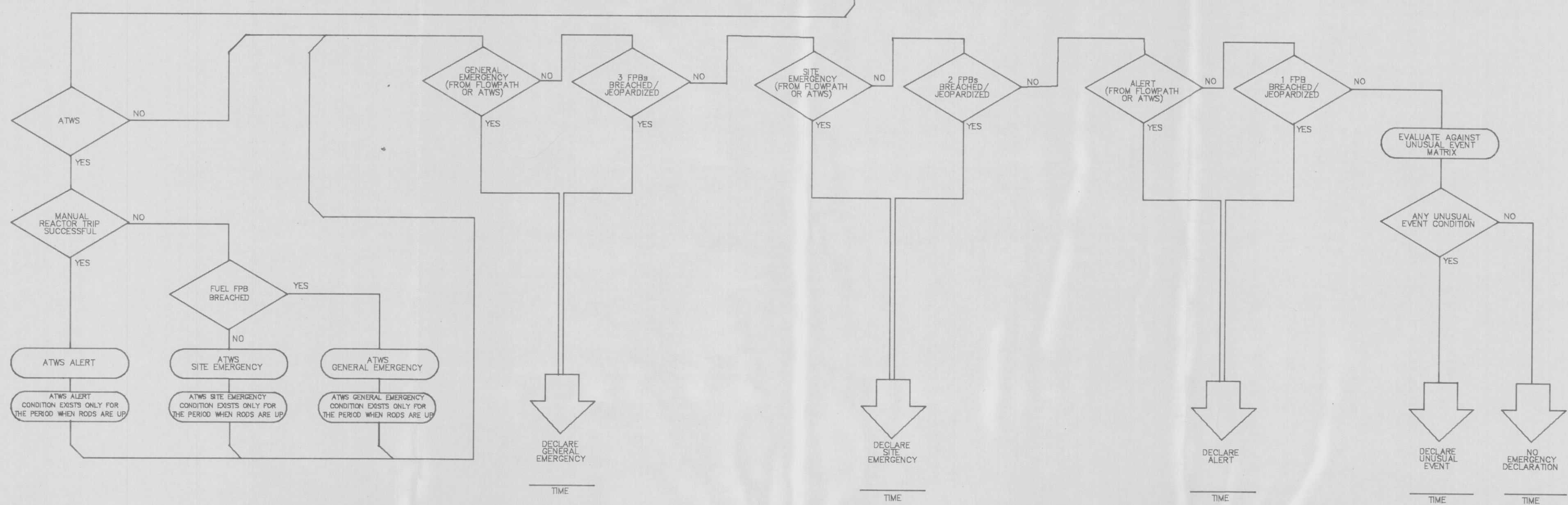
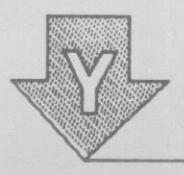


CSF-1 SUBCRITICALITY	CSF-2 CORE COOLING	CSF-3 HEAT SINK	CSF-4 INTEGRITY	CSF-5 CONTAINMENT
○	○	○	○	○
○	○	○	○	○
○	○	○	○	○
○	○	○	○	○



FUEL FPB	RCS FPB	CONTAINMENT FPB
INTACT	INTACT	INTACT
JEOPARDIZED	JEOPARDIZED	JEOPARDIZED
BREACHED	BREACHED	BREACHED



UNUSUAL EVENT MATRIX

GASEOUS OR LIQUID EFFLUENT(S) EXCEEDING TECHNICAL SPECIFICATIONS	FUEL DAMAGE INDICATION	LOSS OF SECONDARY COOLANT OR COOLING	CONTAINMENT INTEGRITY	LOSS OF REACTOR COOLANT	LOSS OF ESF REQUIRING SHUTDOWN BY THE SHNPP TECHNICAL SPECIFICATIONS (E.G. BECAUSE OF MALFUNCTION, PERSONNEL ERROR OR PROCEDURAL INADEQUACY)	LOSS OF POWER	LOSS OF CONTROL BOARD ALARM, INDICATIONS, ASSESSMENT AND COMMUNICATION CAPABILITY	FIRE	SECURITY THREAT	NATURAL PHENOMENA AND OTHER PLANT HAZARDS	SITE EMERGENCY COORDINATOR JUDGEMENTS	OTHER EVENTS OR SPECIFIC LOGS EXCEEDED
FAILURE TO COMPLY WITH THE SHNPP TECHNICAL SPECIFICATIONS INSTANTANEOUS LIMITS IN S11 FOR GASEOUS EFFLUENTS OR FOR LIQUID EFFLUENTS.	1) GROSS FAILED FUEL DETECTOR INDICATES AN INCREASE GREATER THAN 2 x 10 ⁴ CPM WITHIN 30 MINUTES. 2) SPECIFIC ACTIVITY OF THE REACTOR COOLANT EXCEEDS THE SHNPP TECHNICAL SPECIFICATION 3.4.B.	MAIN STEAM OR FEEDWATER BREAK: 1) INSIDE CONTAINMENT, 2) OUTSIDE CONTAINMENT, OR FAILURE OF A STEAM GENERATOR SAFETY OR RELIEF VALVE TO RESEAT AFTER OPERATION, OR STEAM GENERATOR BLEEDDOWN LINE BREAK (APPLICABLE IN MODES 1, 2, & 3) OR RAPID DEPRESSURIZATION OF SECONDARY SIDE	LOSS OF CONTAINMENT INTEGRITY REQUIRING SHUTDOWN BY THE SHNPP TECHNICAL SPECIFICATIONS 3.6.	1) IN EXCESS OF THE SHNPP TECHNICAL SPECIFICATIONS 3.4.B. 2) FAILURE OF A PRESURIZER SAFETY OR RELIEF VALVE TO RESEAT AFTER OPERATION. 3) PRIMARY TO SECONDARY SYSTEM LEAKAGE IN EXCESS OF THE SHNPP TECHNICAL SPECIFICATION 3.4.B.	LOSS OF ESF REQUIRING SHUTDOWN BY THE SHNPP TECHNICAL SPECIFICATIONS (E.G. BECAUSE OF MALFUNCTION, PERSONNEL ERROR OR PROCEDURAL INADEQUACY)	1) LOSS OF OFFSITE POWER, OR 2) LOSS OF BOTH DIESEL GENERATORS.	1) LOSS OF INPUTS FROM INSTRUMENTATION INCLUDED IN THE SHNPP TECHNICAL SPECIFICATION 3.3 INSTRUMENTATION TO AN EXTENT REQUIRING PLANT SHUTDOWN. 2) LOSS OF ALL INPUTS FROM METEOROLOGICAL TOWER. 3) ERPS FAILURES AS INDICATED BY: a. BOTH CPUs A & B ANNUNCIATORS OR b. BOTH SYSTEM DISKS A & B ANNUNCIATORS OR c. BOTH DATA ACQUISITION TO & 11 ANNUNCIATORS d. CPU A & SYSTEM DISK B ANNUNCIATORS OR e. CPU B & SYSTEM DISK A ANNUNCIATORS 4) FAILURE OF BOTH SITE TELEPHONE AND EMERGENCY TELEPHONE SWITCHES.	FIRE LASTING MORE THAN 10 MINUTES WITHIN PROTECTED AREAS.	A SECURITY ALERT HAS BEEN DECLARED AS DEFINED IN THE SECURITY PLAN	1) ALARM ON SEISMIC MONITORS INDICATING EARTHQUAKE. 2) HURRICANE OR TORNADO CROSSING EAB. 3) AIRCRAFT CRASH WITHIN EAB OR UNUSUAL AIRCRAFT ACTIVITY OVER FACILITY. 4) TRAIN DERAILMENT WITHIN EAB. 5) UNPLANNED EXPLOSION WITHIN EAB. 6) UNPLANNED TOXIC OR FLAMMABLE GAS RELEASE WITHIN EAB. 7) TURBINE ROTATING COMPONENT FAILURE CAUSING RAPID PLANT SHUTDOWN. 8) WATER LEVELS IN THE MAIN AND AUXILIARY RESERVOIRS > 240.2 FT. AND 257.7 FT., RESPECTIVELY, OR WATER LEVEL LESS THAN 205.7 FT. IN THE MAIN RESERVOIR.	OTHER PLANT CONDITIONS EXIST THAT WARRANT INCREASED AWARENESS ON THE PART OF A PLANT OPERATING STAFF. CHATHAM HARNETT, LEE AND WAKE COUNTIES AND THE STATE OF NORTH CAROLINA OR REQUIRE PLANT SHUTDOWN UNDER SHNPP TECHNICAL SPECIFICATION OR INVOLVE OTHER THAN NORMAL CONTROLLED SHUTDOWN.	1) UNPLANNED ECCS DISCHARGE TO VESSEL 2) INITIATION OF ANY PLANT SHUTDOWN REQUIRED BY TECHNICAL SPECIFICATIONS 3) LOSS OF FIRE PROTECTION SYSTEM FUNCTION REQUIRING SHUTDOWN BY THE SHNPP TECHNICAL SPECIFICATION 3.7.D 4) CONTAMINATED INJURED INDIVIDUAL REQUIRING OFFSITE MEDICAL TREATMENT.

ATTACHMENT 1

EMERGENCY ACTION LEVEL NETWORK
PEP-101 REV. 2 PAGE 9 OF 12

TI APERTURE CARD

8602240310

E